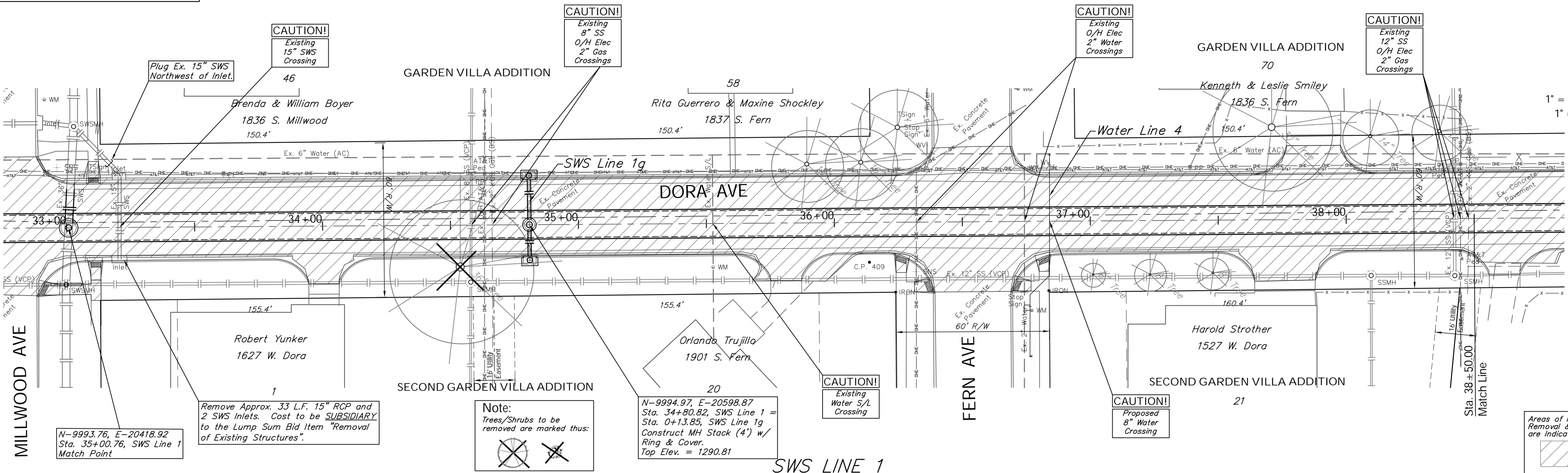


BENCHMARK:
 BM #8 - Chiseled "□" on the South Curb Return of the Drive to 1836 S. Fern, 68' North and 16' East of the Centerlines of Dora and Fern.
 Elev. = 1291.79 (NAVD 88)



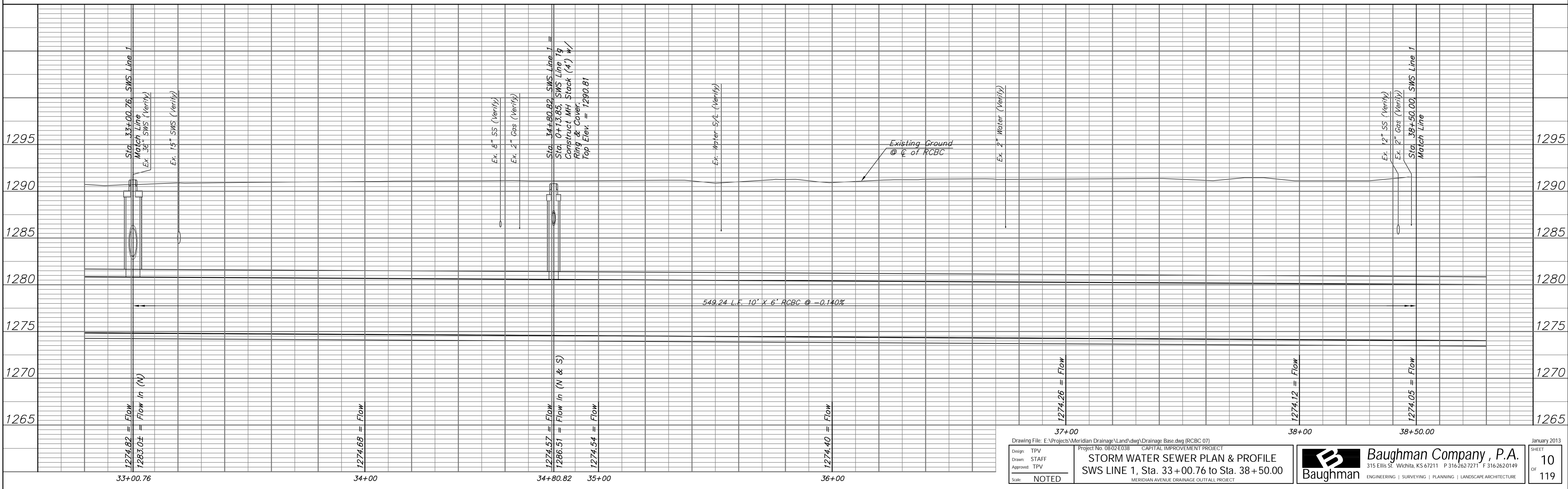
N-9993.76, E-20418.92
 Sta. 35+00.76, SWS Line 1
 Match Point

Remove Approx. 33 L.F. 15" RCP and 2 SWS Inlets. Cost to be **SUBSIDIARY** to the Lump Sum Bid Item "Removal of Existing Structures".

Note:
 Trees/Shrubs to be removed are marked thus:

N-9994.97, E-20598.87
 Sta. 34+80.82, SWS Line 1 =
 Sta. 0+13.85, SWS Line 1g
 Construct MH Stack (4') w/
 Ring & Cover.
 Top Elev. = 1290.81

Areas of Full Pavement Removal & Replacement are Indicated By



Drawing File: E:\Projects\Meridian Drainage\Land\dwg\Drainage Base.dwg (RCBC 07)
 Design: TPV
 Drawn: STAFF
 Approved: TPV
 Scale: NOTED

Project No: 0802E038 CAPITAL IMPROVEMENT PROJECT
STORM WATER SEWER PLAN & PROFILE
 SWS LINE 1, Sta. 33+00.76 to Sta. 38+50.00
 MERIDIAN AVENUE DRAINAGE OUTFALL PROJECT

Baughman Company, P.A.
 315 Ellis St., Wichita, KS 67211 P 316.262.1271 F 316.262.0149
 ENGINEERING | SURVEYING | PLANNING | LANDSCAPE ARCHITECTURE

January 2013
 SHEET
 10
 OF
 119