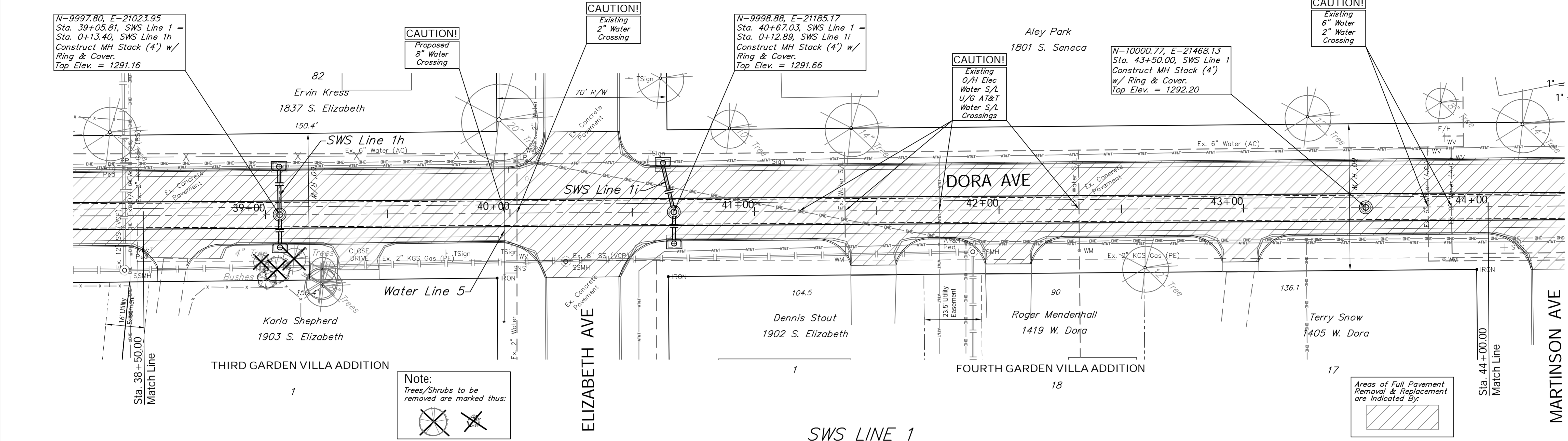


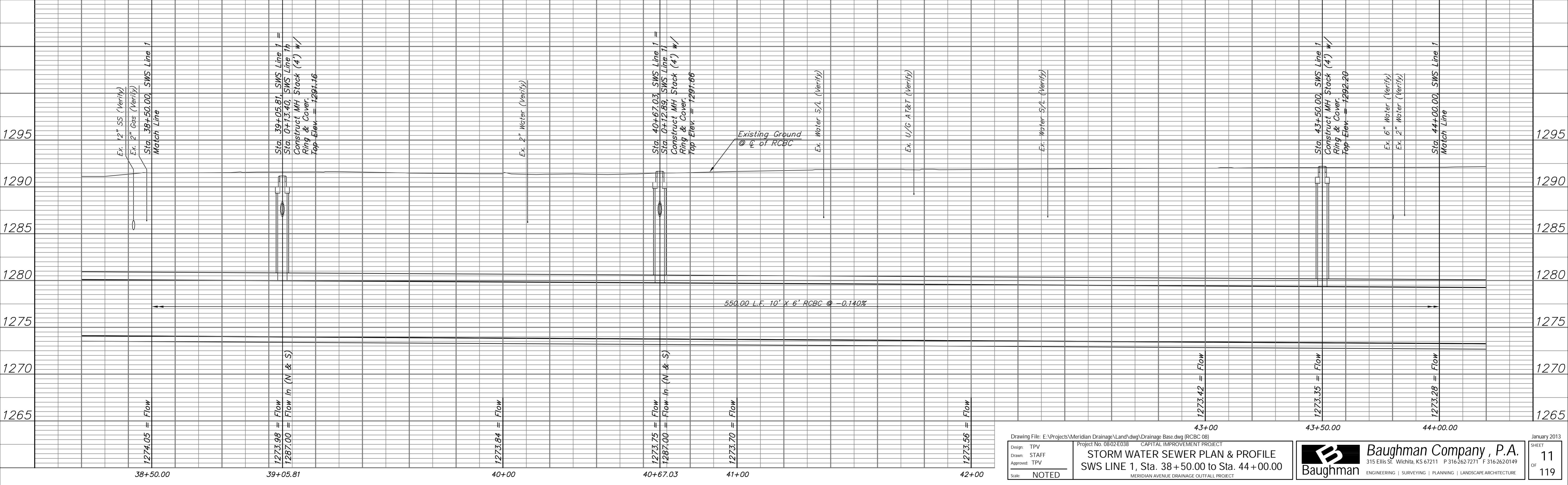
BENCHMARK:
 BM #9 - Chiseled "□" on the North Curb Return of the Drive to 1341 W. Dora, 68' South and 16' East of the Centerlines of Dora and Martinson.
 Elev. = 1292.58 (NAVD 88)

SCALE:
 1" = 20' Horizontal
 1" = 5' Vertical



Note:
 Trees/Shrubs to be removed are marked thus:

Areas of Full Pavement Removal & Replacement are Indicated By:



Drawing File: E:\Projects\Meridian Drainage\Land\dwg\Drainage Base.dwg (RCBC 08)
 Design: TPV
 Drawn: STAFF
 Approved: TPV
 Scale: NOTED

Project No: 0802E038 CAPITAL IMPROVEMENT PROJECT
STORM WATER SEWER PLAN & PROFILE
 SWS LINE 1, Sta. 38+50.00 to Sta. 44+00.00
 MERIDIAN AVENUE DRAINAGE OUTFALL PROJECT

Baughman Company, P.A.
 315 Ellis St., Wichita, KS 67211 P 316-262-1271 F 316-262-0149
 ENGINEERING | SURVEYING | PLANNING | LANDSCAPE ARCHITECTURE

January 2013
 SHEET
 OF 11
 119