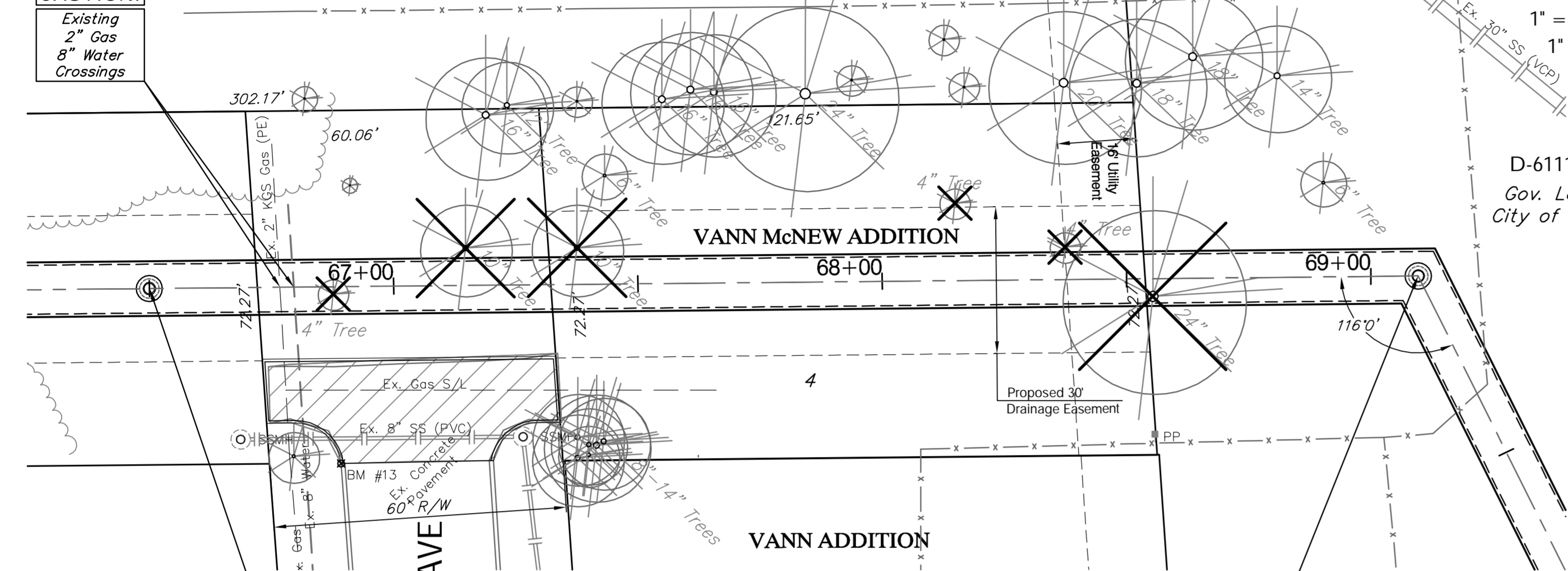


BENCHMARK:
 BM #13 - Chiseled "I" on the Top of Curb at the South Lot Line of Lot 2, Van McNew Addition on the West Side of Osage.
 Elev. = 1287.70 (NAVD 88)

BENCHMARK:
 BM #13 - Chiseled "I" on the Top of Curb at the South Lot Line of Lot 2, Van McNew Addition on the West Side of Osage.
 Elev. = 1287.70 (NAVD 88)

CAUTION!
 Existing 2" Gas
 8" Water Crossings



N-8977.42, E-22883.81
 Sta. 66+50.00, SWS Line 1
 Match Point

Note:
 Trees/Shrubs to be removed are marked thus:

N-8980.00, E-23143.49
 Sta. 69+09.70, SWS Line 1
 Construct MH Stack (4') w/ Ring & Cover. Deflect 10' X 8' RCBC 64' 00' (Rt.)
 Top Elev. = 1286.86
 Match Point

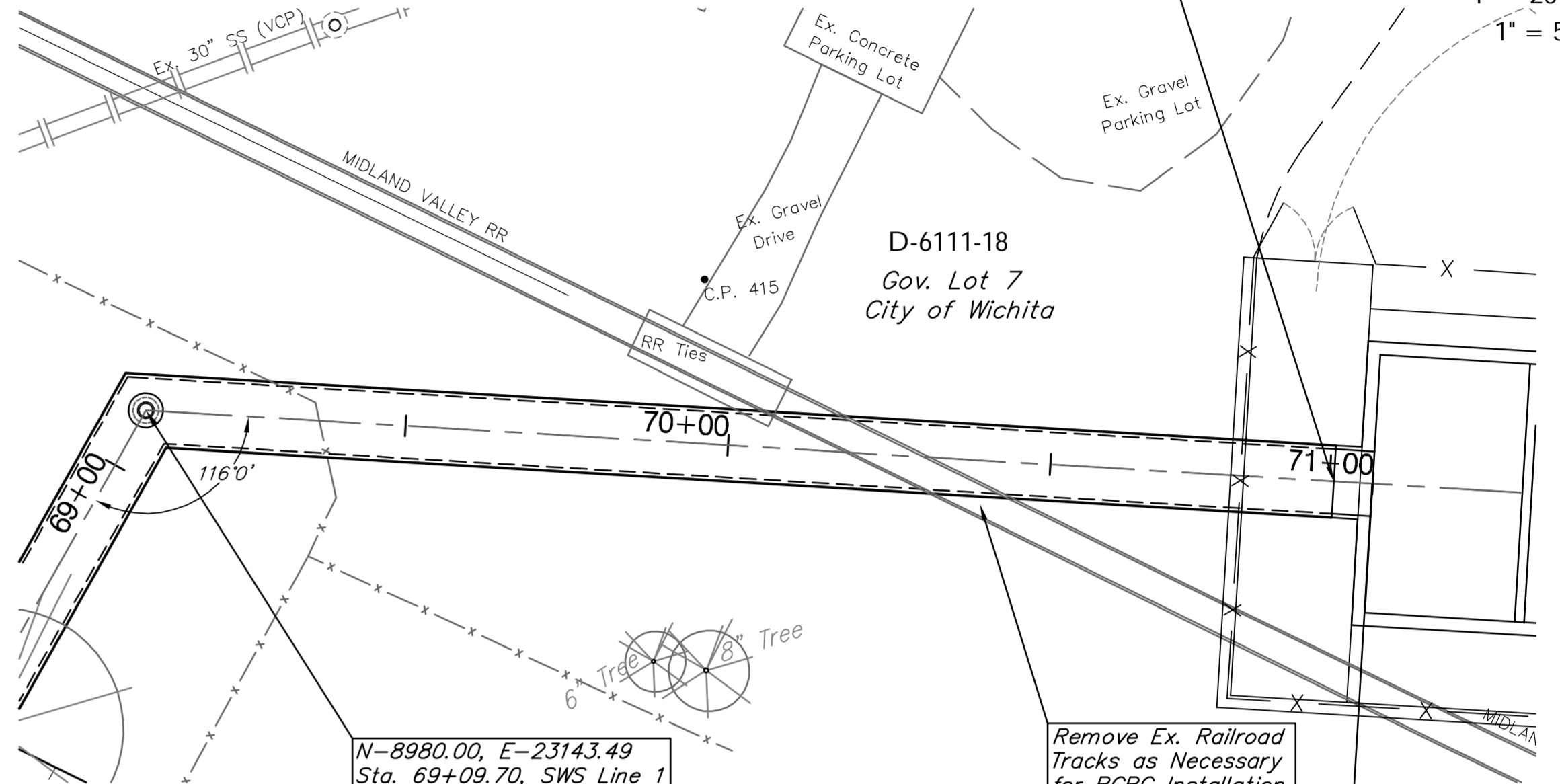
SCALE:
 1" = 20' Horizontal
 1" = 5' Vertical

D-6111-18
 Gov. Lot 7
 City of Wichita

Areas of Full Pavement Removal & Replacement are Indicated By:

SWS LINE 1

SCALE:
 1" = 20' Horizontal
 1" = 5' Vertical

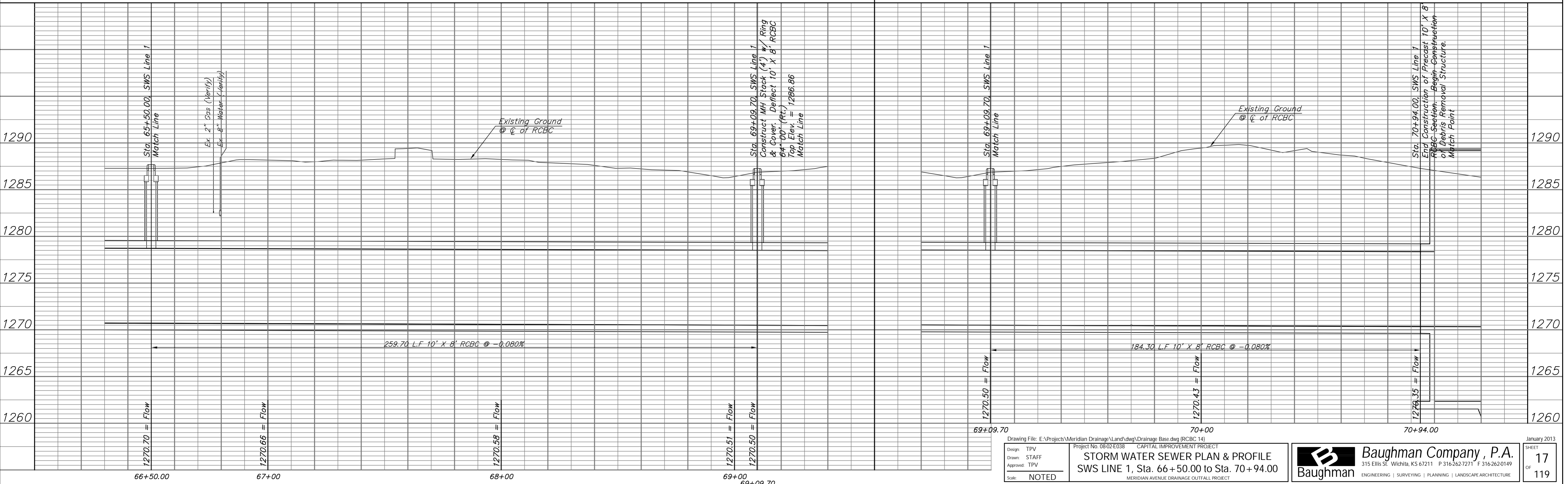


N-8980.00, E-23143.49
 Sta. 69+09.70, SWS Line 1
 Match Point

Remove Ex. Railroad Tracks as Necessary for RCBC Installation. Do Not Replace.

The Contractor Shall Anchor the 2 Pre-cast RCBC Sections Adjacent to the Structure Together with the Cast-In-Place RCBC Section. The Cost Shall be SUBSIDIARY to the Installation of the RCBC Sections. Shops Drawings of the Anchors Shall be Provided to the Project Engineer Prior to Beginning Construction.

SWS LINE 1



Drawing File: E:\Projects\Meridian Drainage\Land\dwg\Drainage Base.dwg (RCBC 14)
 Project No: 0802E038 CAPITAL IMPROVEMENT PROJECT
STORM WATER SEWER PLAN & PROFILE
 SWS LINE 1, Sta. 66+50.00 to Sta. 70+94.00
 MERIDIAN AVENUE DRAINAGE OUTFALL PROJECT

Baughman Company, P.A.
 315 Ellis St., Wichita, KS 67211 P 316-262-7271 F 316-262-0149
 ENGINEERING | SURVEYING | PLANNING | LANDSCAPE ARCHITECTURE

January 2013
 SHEET 17 OF 119