

BENCHMARK:
 BM #2 - Chiseled "□" on the West Side of the Wheel Chair Ramp at the southeast corner of Meridian & Orient Elev. = 1293.19 (NAVD 88)

N-10288.74, E-17173.59
 Sta. 0+88.58, SWS Line 2d =
 Sta. 4+75.27, SWS Line 2 =
 Sta. 0+35.78, SWS Line 2e
 Connect to Prop. Manhole, Grout,
 & Seal Tight (E & W).

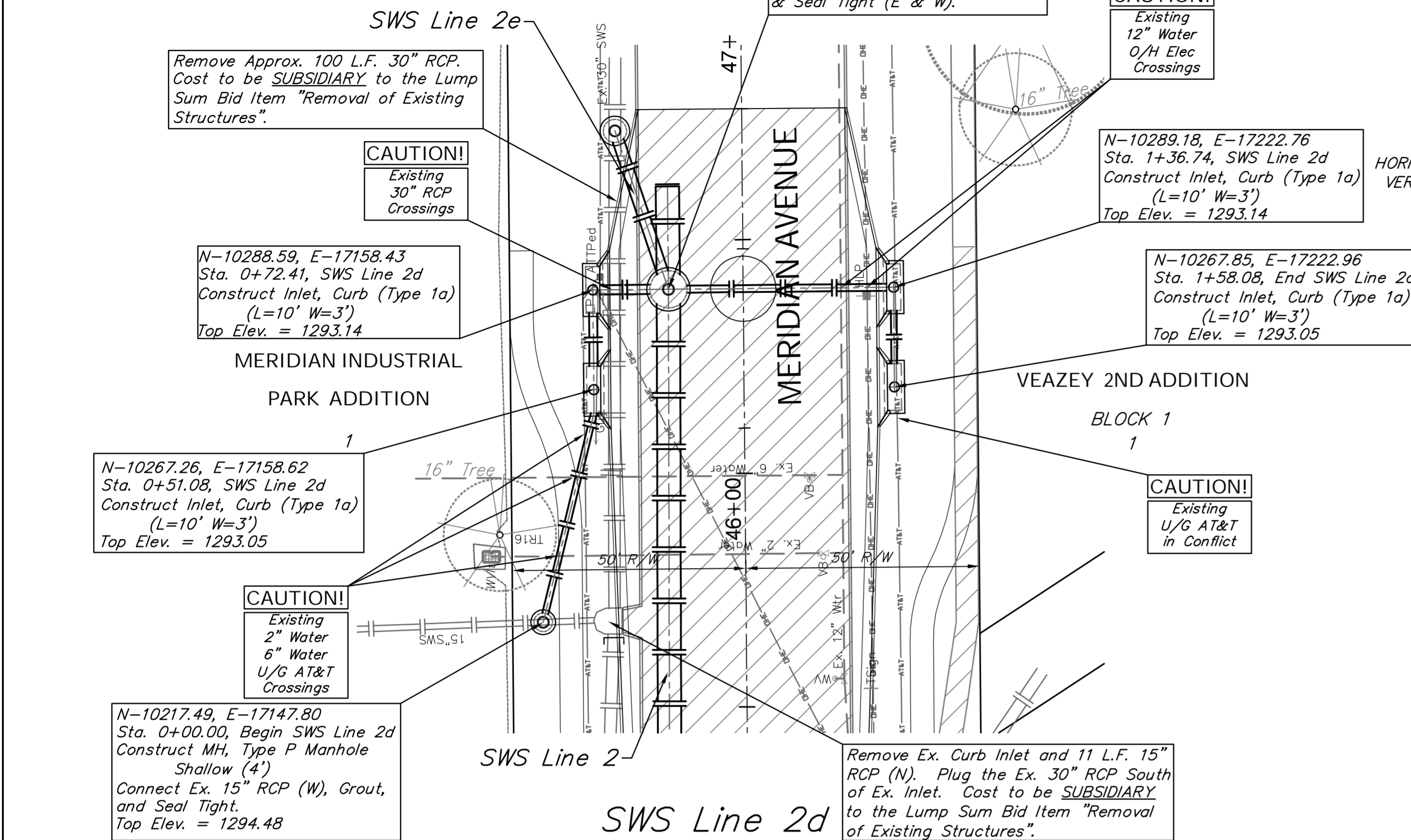
CAUTION!
 Existing
 12" Water
 O/H Elec
 Crossings

N-10289.18, E-17222.76
 Sta. 1+36.74, SWS Line 2d
 Construct Inlet, Curb (Type 1a)
 (L=10' W=3')
 Top Elev. = 1293.14

N-10267.85, E-17222.96
 Sta. 1+58.08, End SWS Line 2d
 Construct Inlet, Curb (Type 1a)
 (L=10' W=3')
 Top Elev. = 1293.05

CAUTION!
 Existing
 U/G AT&T
 in Conflict

SCALE:
 HORIZONTAL: 1" = 20'
 VERTICAL: 1" = 5'



BENCHMARK:
 BM #2 - Chiseled "□" on the West Side of the Wheel Chair Ramp at the southeast corner of Meridian & Orient Elev. = 1293.19 (NAVD 88)

N-10322.64, E-17229.19
 Sta. 0+00.00, Begin SWS Line 2e
 Remove the Ex. 30" RCP as Necessary.
 Construct MH, Type P Manhole
 Shallow (5')
 Connect Ex. 30" RCP (N), Grout, and
 Seal Tight.
 Top Elev. = 1294.75

N-10288.75, E-17174.60
 Sta. 0+35.78, End SWS Line 2e =
 Sta. 4+75.27, SWS Line 2 =
 Sta. 0+88.58, SWS Line 2d
 Connect to Prop. Manhole, Grout,
 & Seal Tight (E & W).

SCALE:
 HORIZONTAL: 1" = 20'
 VERTICAL: 1" = 5'

