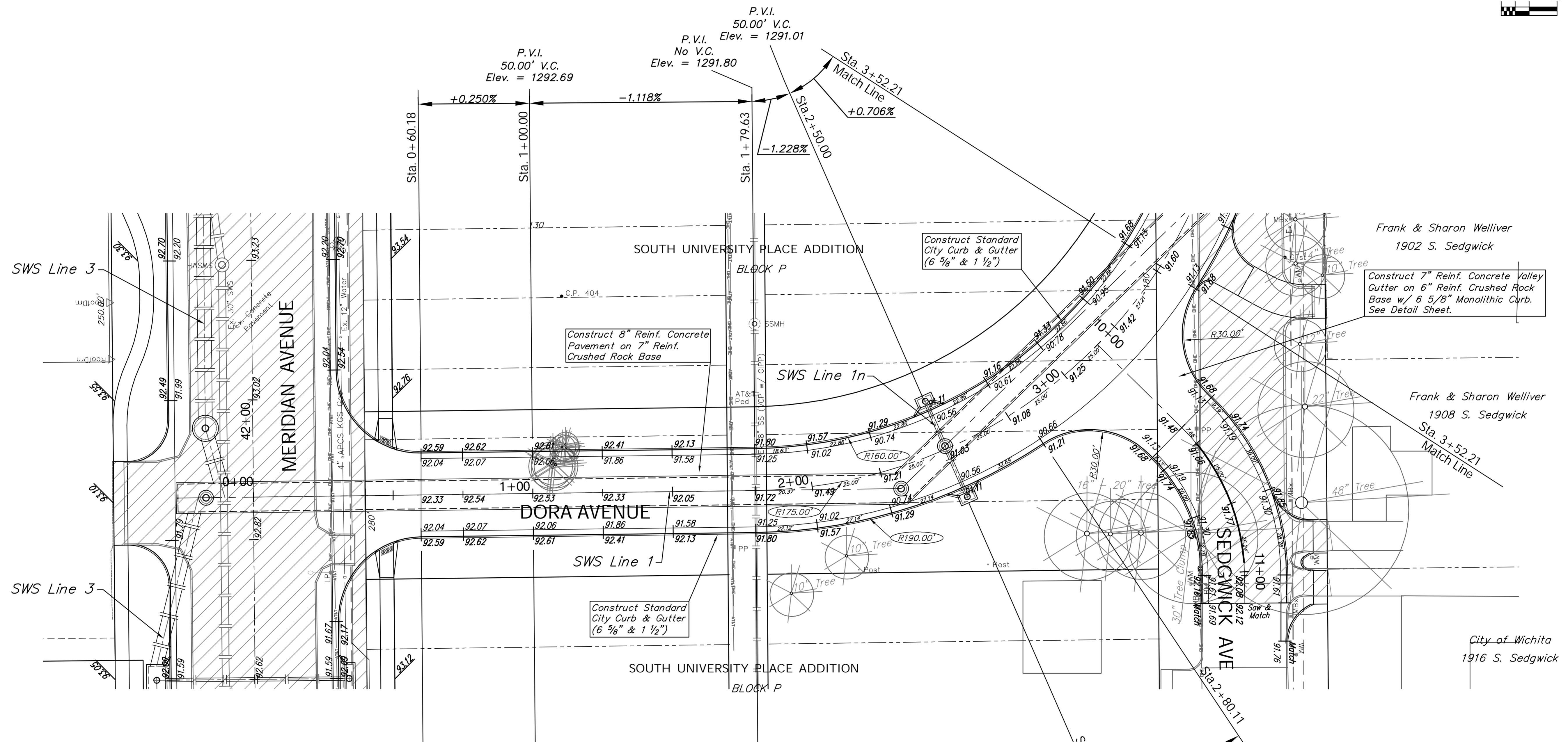
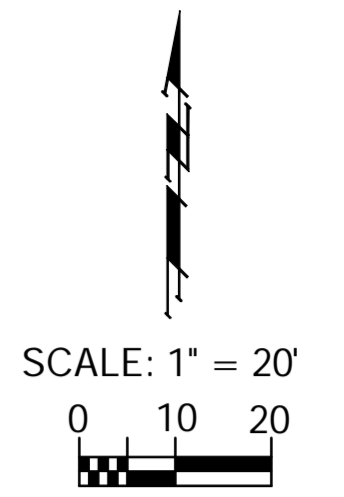
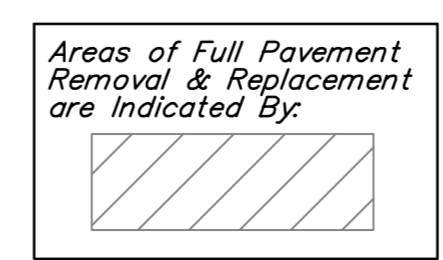


BENCHMARK:
 BM #2 - Chiseled "□" on the West Side of the Wheel Chair Ramp at the southeast corner of Meridian & Orient
 Elev. = 1293.19 (NAVD 88)



Curve #1
 Curve Data Based on Centerline
 Rad. = 175' Delta = 89° 40' 42" Tangent = 174.02'
 Arc = 273.91' L.C. = 246.79' Def/Ft. = 9.82202 Min.

Station	Arc	FACE CHORD LENGTHS		Defl.	T. Defl.
		8' Lt.	8' Rt.		
1+79.63	-	-	-	0'00"00"	0'00"00"
2+00.00	20.37'	17.68'	23.04'	3'20"06"	3'20"06"
2+25.00	25.00'	21.70'	28.26'	7'25"39"	10'45"45"
2+50.00	25.00'	21.70'	28.26'	8'11"06"	18'56"51"
2+75.00	25.00'	21.70'	28.26'	8'11"06"	27'07"57"
2+80.11	5.11'	4.43'	5.78'	4'55"42"	32'03"39"
3+00.00	19.89'	17.27'	22.50'	4'05"33"	36'09"13"
3+25.00	25.00'	21.70'	28.26'	7'20"58"	43'30"10"
3+52.21	27.21'	23.61'	30.75'	8'32"46"	52'02"56"
3+75.00	22.79'	19.78'	25.77'	8'11"06"	60'14"03"
3+97.60	22.60'	19.61'	25.55'	7'25"51"	67'39"54"
4+25.00	27.40'	23.78'	30.97'	8'11"06"	75'51"00"
4+53.54	28.54'	24.76'	32.25'	9'09"25"	85'05"21"



Drawing File: E:\Projects\Meridian Drainage\Land\dwg\Drainage Base.dwg (Rev 02)
 Design: TPV
 Drawn: Sonny
 Approved: TPV
 Scale: Noted

Project No. 0808 E186 CAPITAL IMPROVEMENT PROJECT
 DORA AVENUE PAVING
 STA. 0+59.82 to STA. 3+52.21
 MERIDIAN AVENUE DRAINAGE OUTFALL PROJECT

Baughman Company, P.A.
 315 Ellis St., Wichita, KS 67211 P 316.262.7271 F 316.262.0149
 ENGINEERING | SURVEYING | PLANNING | LANDSCAPE ARCHITECTURE