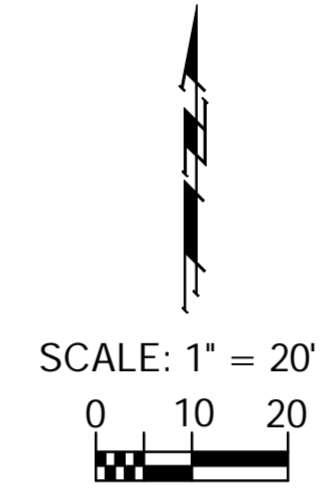
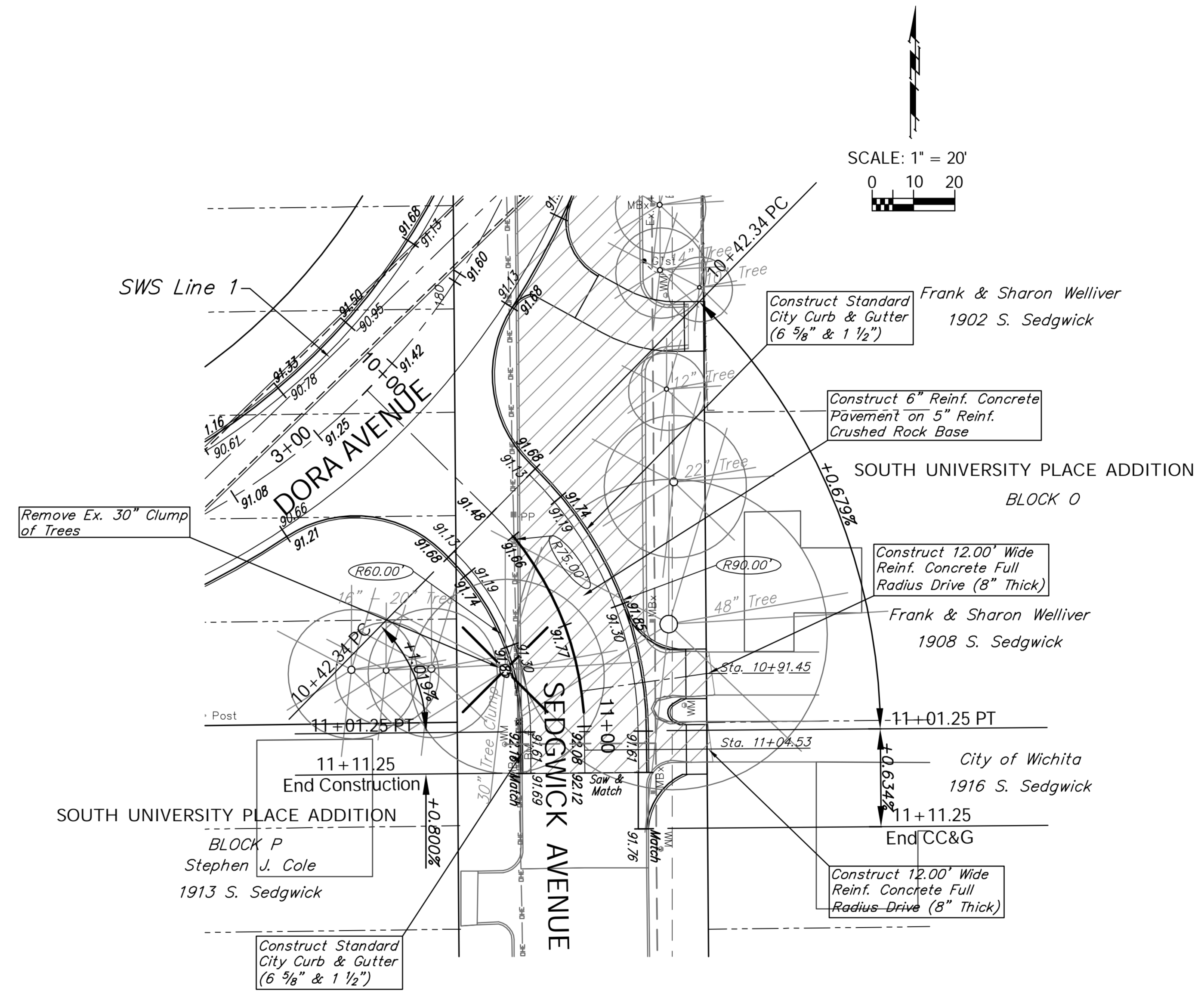
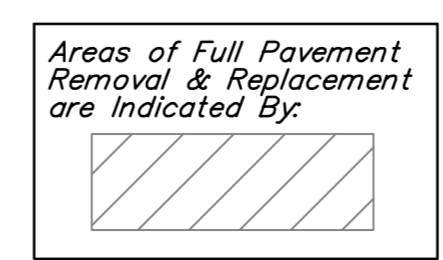


BENCHMARK:  
 BM #2 - Chiseled "□" on the West Side of the Wheel Chair Ramp at the southeast corner of Meridian & Orient  
 Elev. = 1293.19 (NAVD 88)



Curve #3  
 Curve Data Based on Centerline  
 Rad. = 75.00' Delta = 49° 59' 57" Tangent = 31.07'  
 Arc = 58.90' L.C. = 57.40' Def/Ft. = 25.46647 Min.

Station	Arc	FACE CHORD LENGTHS		Defl.	T. Defl.
		8' Lt.	8' Rt.		
10+42.34	-	-	-	0'00"00"	0'00"00"
10+50.00	7.66'	10.00'	5.31'	2'55"31"	2'55"31"
10+75.00	25.00'	32.25'	17.25'	12'28"26"	15'23"57"
11+01.24	26.24'	34.12'	18.11'	19'34"29"	34'58"26"



Drawing File: E:\Projects\Meridian Drainage\Land\dwg\Drainage Base.dwg (Rev 04)  
 Design: TPV  
 Drawn: Sonny  
 Approved: TPV  
 Scale: Noted

Project No. 0808E186 CAPITAL IMPROVEMENT PROJECT  
**SEDGWICK AVENUE**  
 STA. 10+42.34 to STA. 11+11.25  
 MERIDIAN AVENUE DRAINAGE OUTFALL PROJECT

**Baughman Company, P.A.**  
 315 Ellis St., Wichita, KS 67211 P 316-262-7271 F 316-262-0149  
 ENGINEERING | SURVEYING | PLANNING | LANDSCAPE ARCHITECTURE