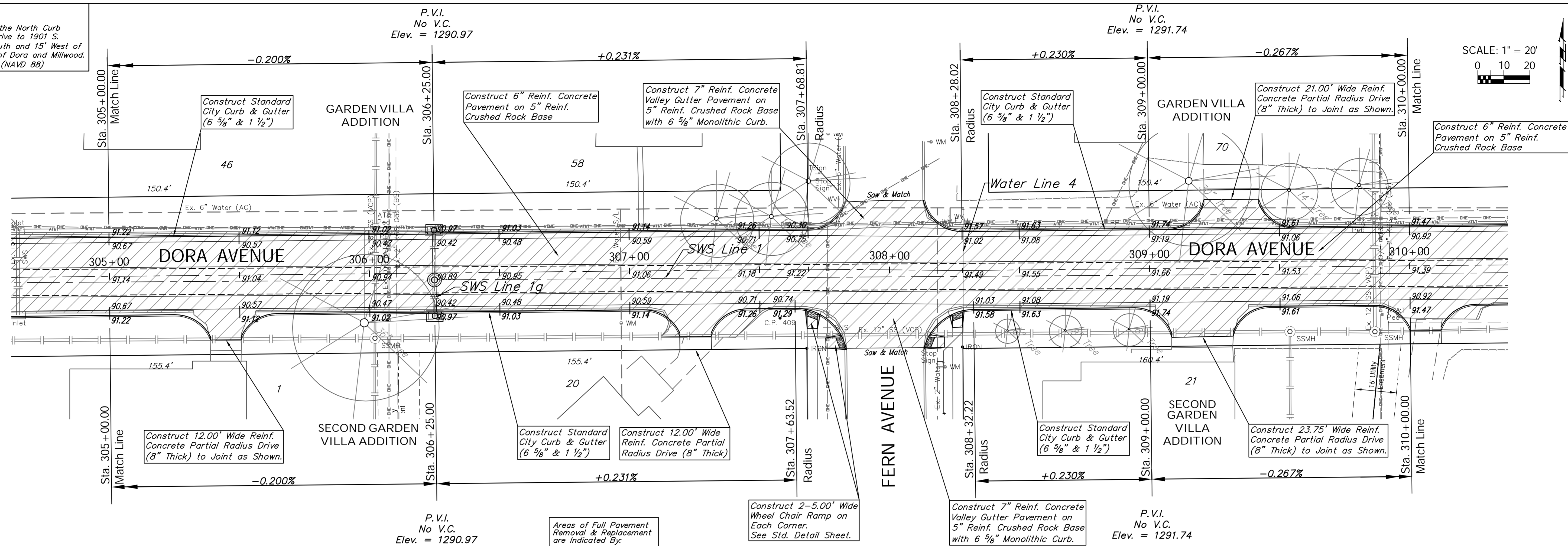
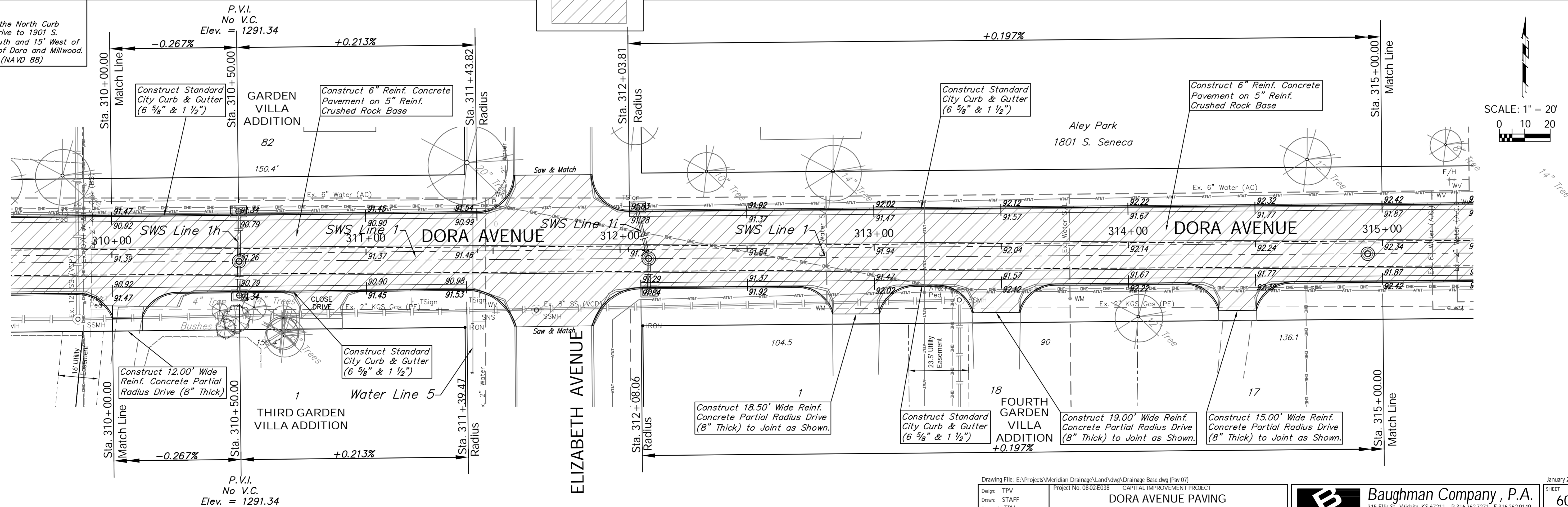


BENCHMARK:
 BM #7 - Chiseled "L" on the North Curb
 Return of the Drive to 1901 S.
 Millwood, 36' South and 15' West of
 the Centerlines of Dora and Millwood.
 Elev. = 1291.22 (NAVD 88)



BENCHMARK:
 BM #7 - Chiseled "L" on the North Curb
 Return of the Drive to 1901 S.
 Millwood, 36' South and 15' West of
 the Centerlines of Dora and Millwood.
 Elev. = 1291.22 (NAVD 88)



Drawing File: E:\Projects\Meridian Drainage\Land\dwg\Drainage Base.dwg (Rev 07)

Design: TPV
 Drawn: STAFF
 Approved: TPV
 Scale: NOTED

Project No. 0802E038 CAPITAL IMPROVEMENT PROJECT
 DORA AVENUE PAVING
 STA. 305+00.00 TO STA. 315+00.00
 MERIDIAN AVENUE DRAINAGE OUTFALL PROJECT

Baughman Company, P.A.
 315 Ellis St., Wichita, KS 67211 P 316.262.7271 F 316.262.0149
 ENGINEERING | SURVEYING | PLANNING | LANDSCAPE ARCHITECTURE

January 2013
 SHEET
 OF
 60
 119