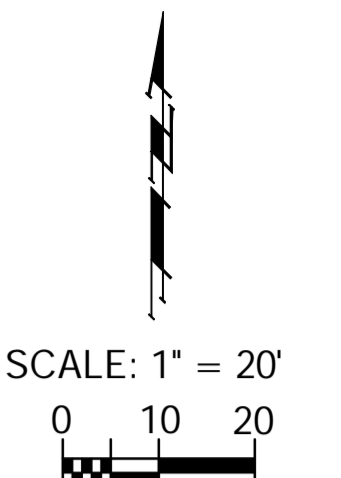
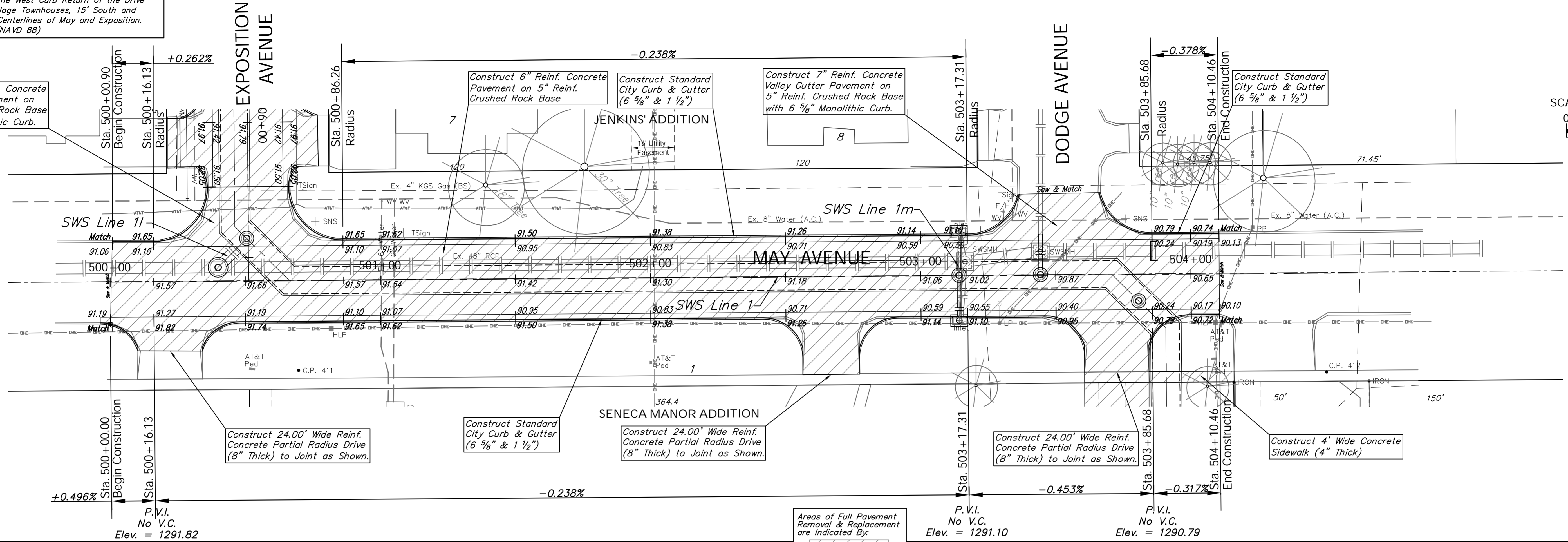
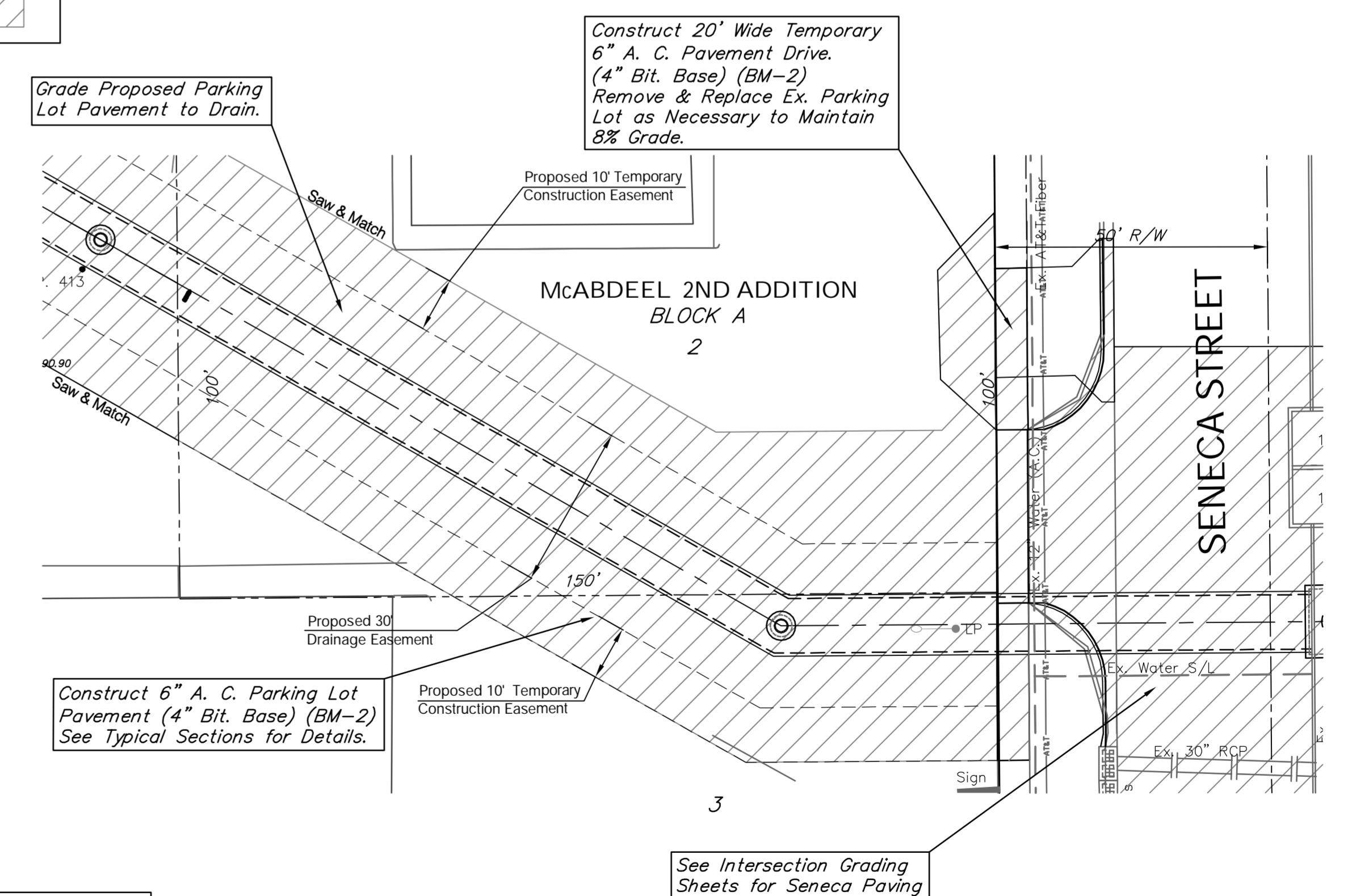
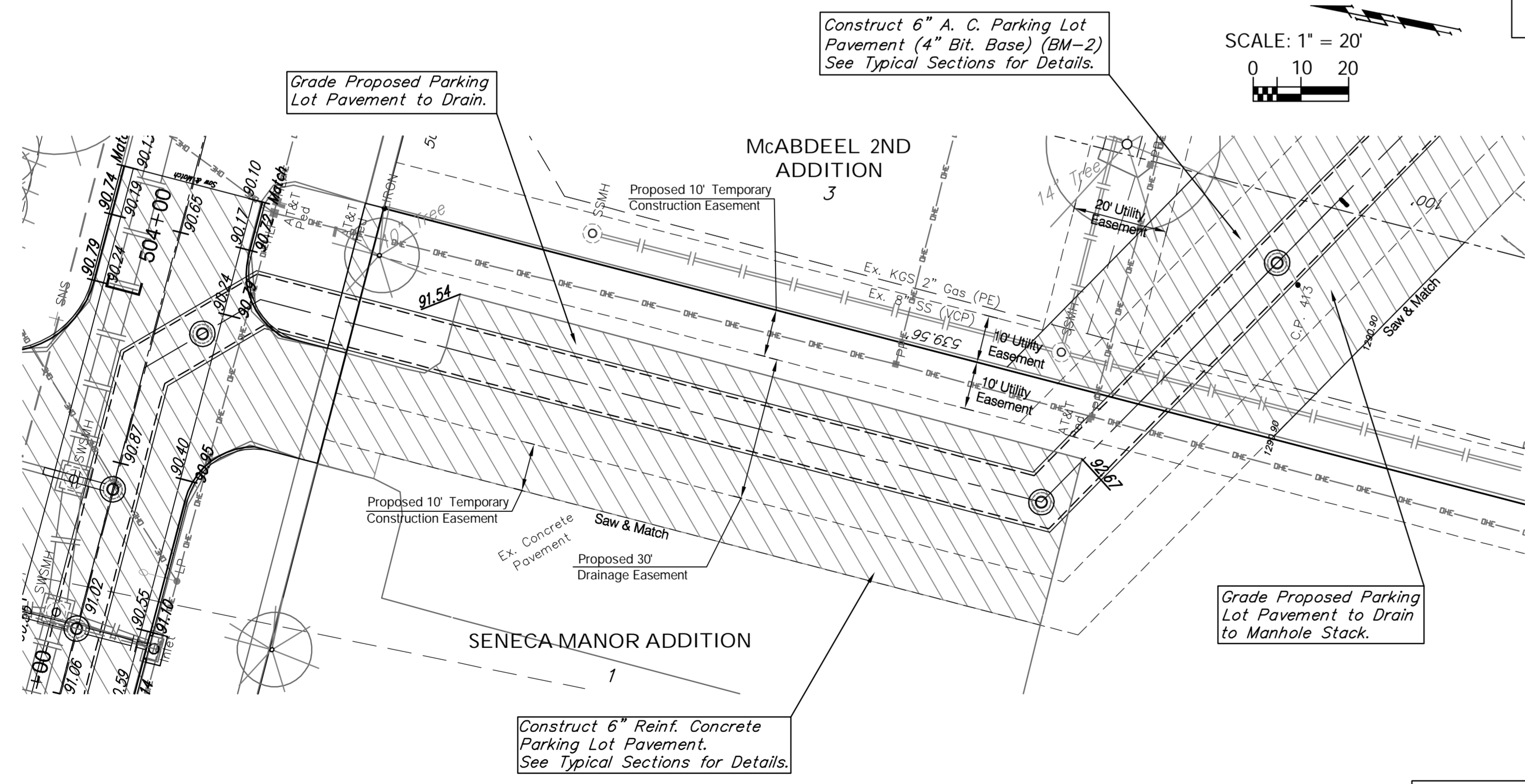


BENCHMARK:
 BM #11 - Chiseled "C" on the West Curb Return of the Drive to the Seneca Village Townhouses, 15' South and 52' West of the Centerlines of May and Exposition. Elev. = 1291.76 (NAVD 88)

Construct 7" Reinf. Concrete Valley Gutter Pavement on 5" Reinf. Crushed Rock Base with 6 5/8" Monolithic Curb.



Areas of Full Pavement Removal & Replacement are indicated by:



The Ex. Parking Lot Striping Shall be Returned to Pre-Construction Conditions after the Parking Lot Pavement has been Replaced. All Cost Associated with Striping the Parking Lot Shall be Considered **SUBSIDIARY** to the Lump Sum Bid Item "Pavement Markings (Parking Lot)".

Drawing File: E:\Projects\Meridian Drainage\Land\dwg\Drainage Base.dwg (Rev 09)
 Design: TPV
 Drawn: STAFF
 Approved: TPV
 Scale: NOTED
 Project No: 0802E038 CAPITAL IMPROVEMENT PROJECT
MAY AVENUE & PARKING LOT PAVING PLAN
 MERIDIAN AVENUE DRAINAGE OUTFALL PROJECT

Baughman Company, P.A.
 315 Ellis St., Wichita, KS 67211 P 316.262.7271 F 316.262.0149
 ENGINEERING | SURVEYING | PLANNING | LANDSCAPE ARCHITECTURE