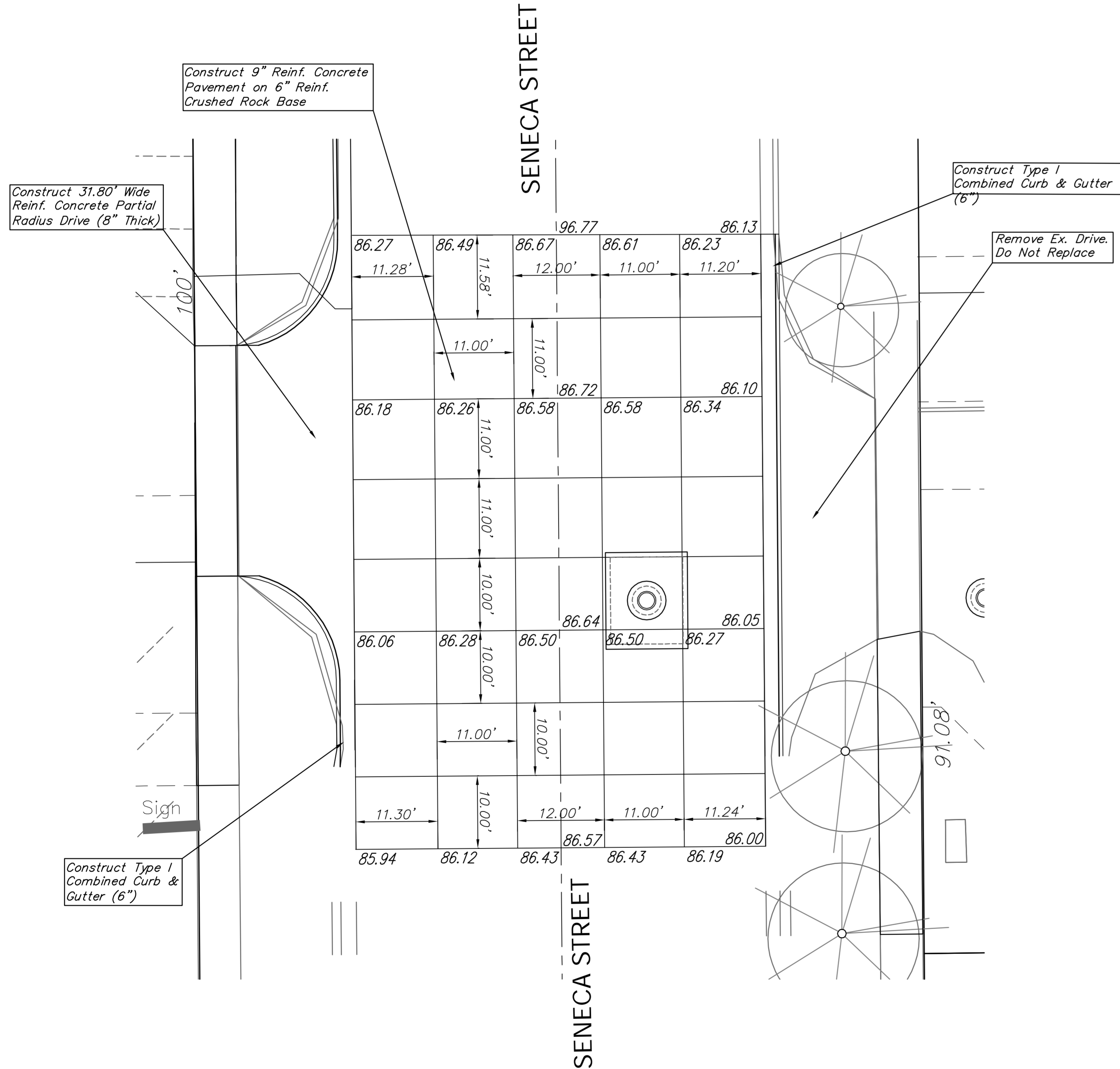
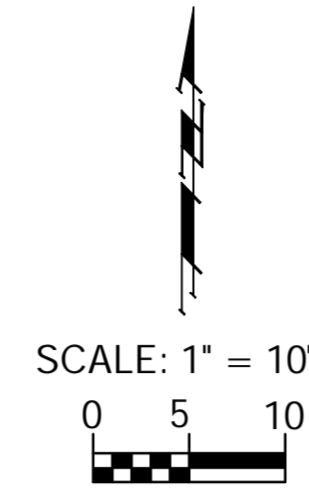
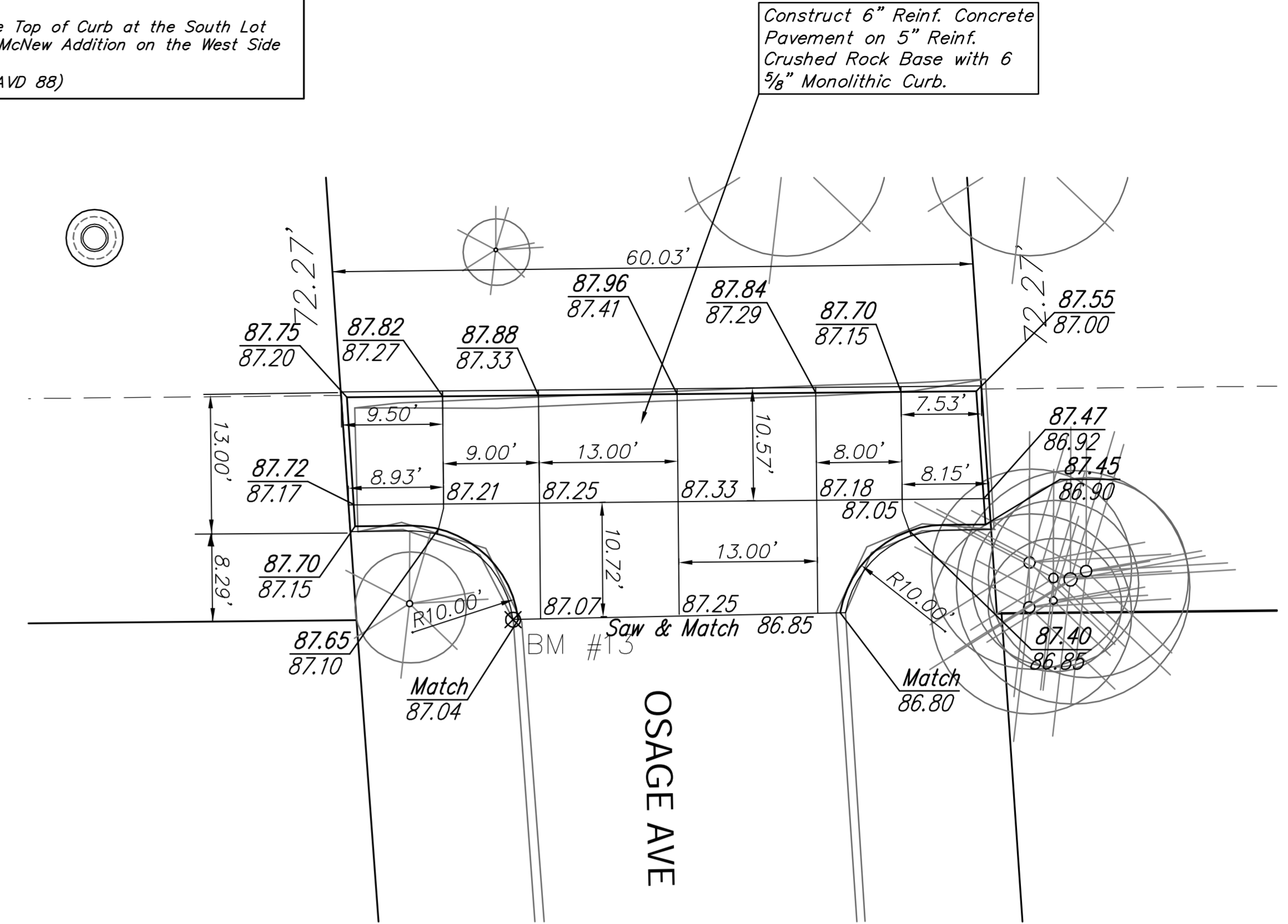
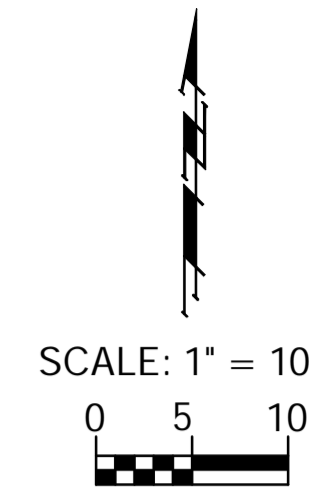


BENCHMARK:  
 BM #12 - City of Wichita Disc Located in the Southwest Corner  
 of the Intersection of Seneca and May, 77.2' West  
 and 23.5' South of the Centerline of Both.  
 Elev. = 1289.23 (NAVD 88)

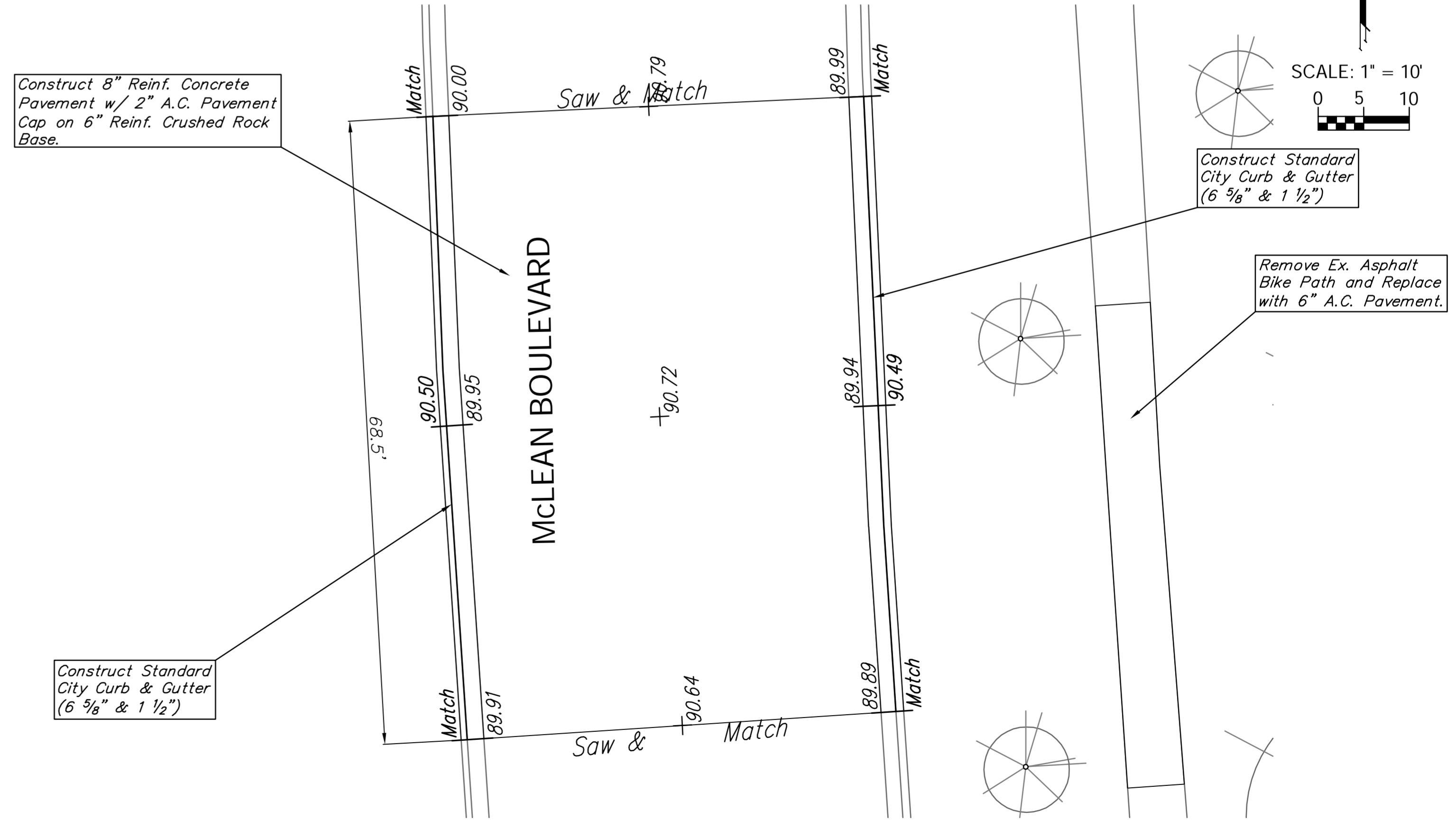
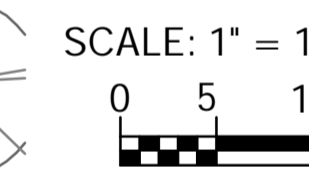


BENCHMARK:  
 BM #13 - Chiseled "C" on the Top of Curb at the South Lot  
 Line of Lot 2, Van McNew Addition on the West Side  
 of Osage.  
 Elev. = 1287.70 (NAVD 88)



Construct 8" Reinf. Concrete  
 Pavement w/ 2" A.C. Pavement  
 Cap on 6" Reinf. Crushed Rock  
 Base.

Construct Standard  
 City Curb & Gutter  
 (6 3/8" & 1 1/2")



Drawing File: E:\Projects\Meridian Drainage\Land\dwg\Drainage Base.dwg (Int 08)  
 Project No. 0802E038 CAPITAL IMPROVEMENT PROJECT

Design: TPV  
 Drawn: STAFF  
 Approved: TPV  
 Scale: NOTED

SENECA, OSAGE & McLEAN  
 JOINT & GRADING PLANS  
 MERIDIAN AVENUE DRAINAGE OUTFALL PROJECT

**Baughman Company, P.A.**  
 315 Ellis St., Wichita, KS 67211 P 316-262-7271 F 316-262-0149  
 ENGINEERING | SURVEYING | PLANNING | LANDSCAPE ARCHITECTURE

January 2013  
 SHEET 77  
 OF 119