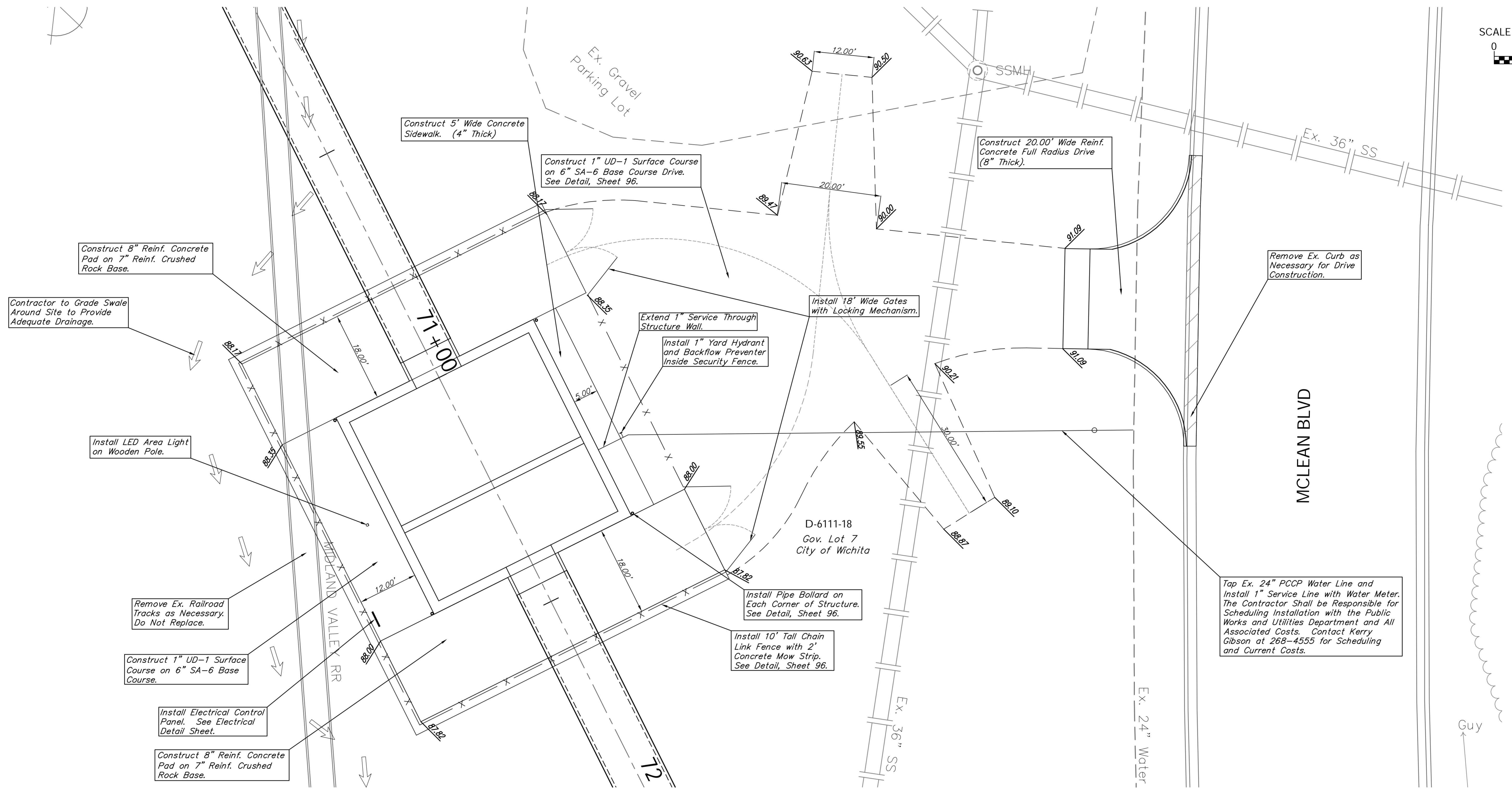
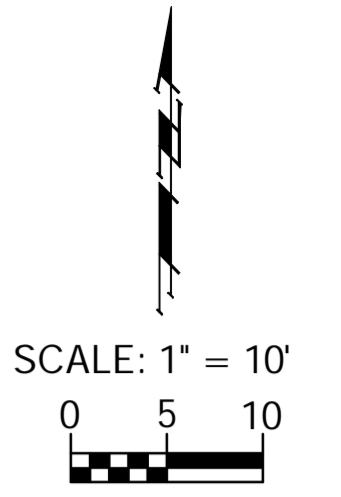


BENCHMARK:
 BM #14 - Chiseled "□" on the Top of Curb at the South Property
 Line of MTA Addition on the West Side of McLean.
 Elev. = 1290.66 (NAVD 88)



RECAPITULATION OF SITE PLAN QUANTITIES

ITEM	QUANTITY TOTAL	UNIT
CONCRETE PAVEMENT 8" (Reinforced)	272	Sq. Yds.
CRUSHED ROCK BASE 7" (Reinforced)	272	Sq. Yds.
CONCRETE DRIVEWAY 8" (Reinforced)	653	Sq. Ft.
GRAVEL DRIVE	630	Sq. Yds.
CONCRETE SIDEWALK 4"	220	Sq. Ft.
WATER METER SETTING 1" (Includes Hydrant & BFP)	1	Each
SECURITY FENCE, 10'	598	L.F.
ELECTRICAL CONTROL PANEL	1	Each
POLE MOUNTED LED AREA LIGHT	1	Each
PIPE BOLLARDS	4	Each

FOR INFORMATION ONLY. All Costs for the Construction of the Debris Removal Structure Shall be SUBSIDIARY to the Lump Sum Bid Item "Debris Removal Structure".