

10' HIGH CHAIN LINK FENCE DETAIL

All Chain Link Fabric Shall be Zinc Coated (Galvanized)

All Steel Line, Pull, Corner and End Posts Shall be Galvanized. Diameters Shown for Steel Posts are Nominal. Weight Tolerances Shall be as Shown in the Specifications.

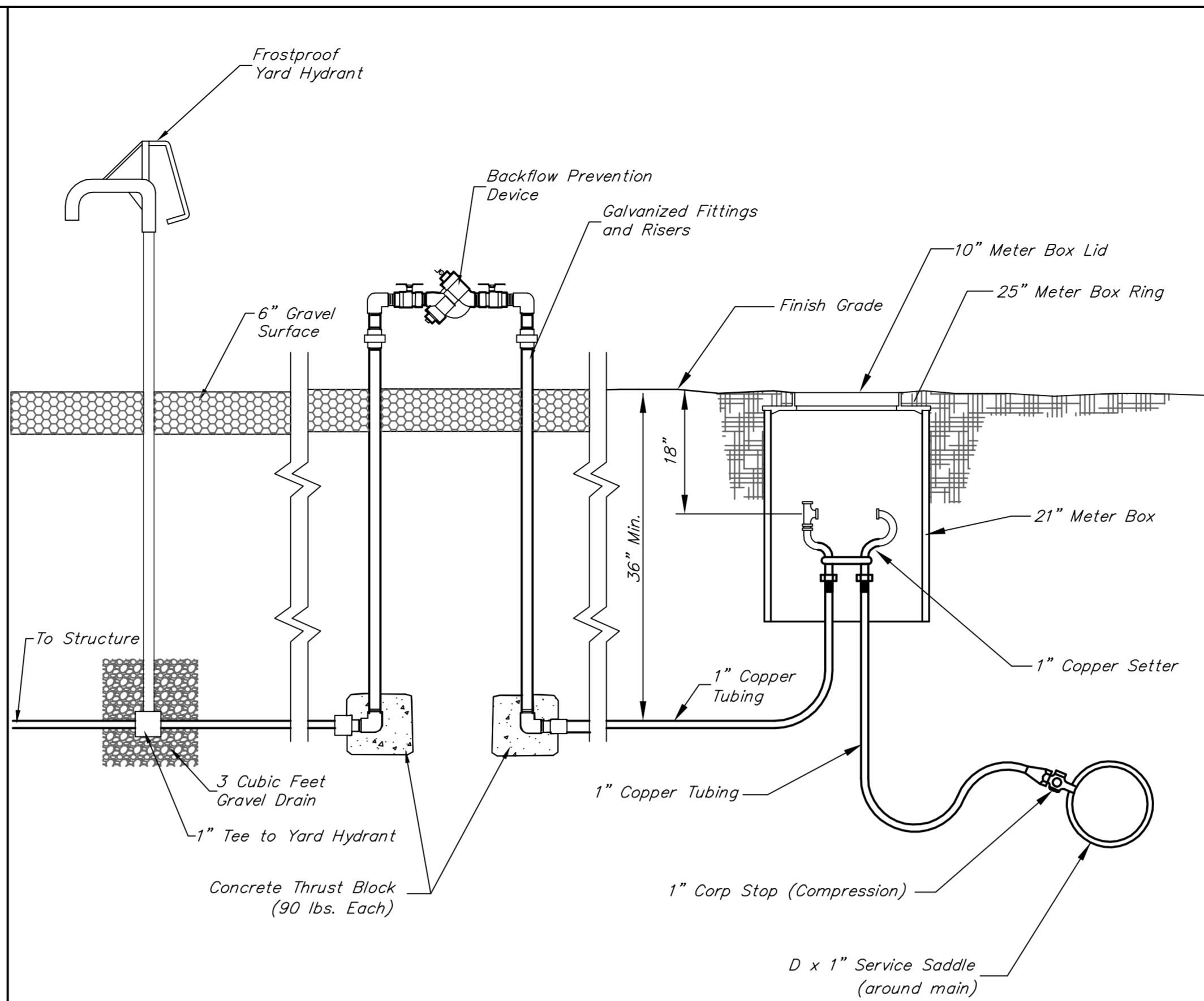
All Bolts, Including Eyebolts and Turnbuckles, Shall be Coated in Accordance with the Weight of Coating Requirements of ASTM A153 and Shall Conform to ASTM A307 or A36.

Miscellaneous Plates, Bars and Shapes, Including Tension Rods, Shall Conform to ASTM A36.

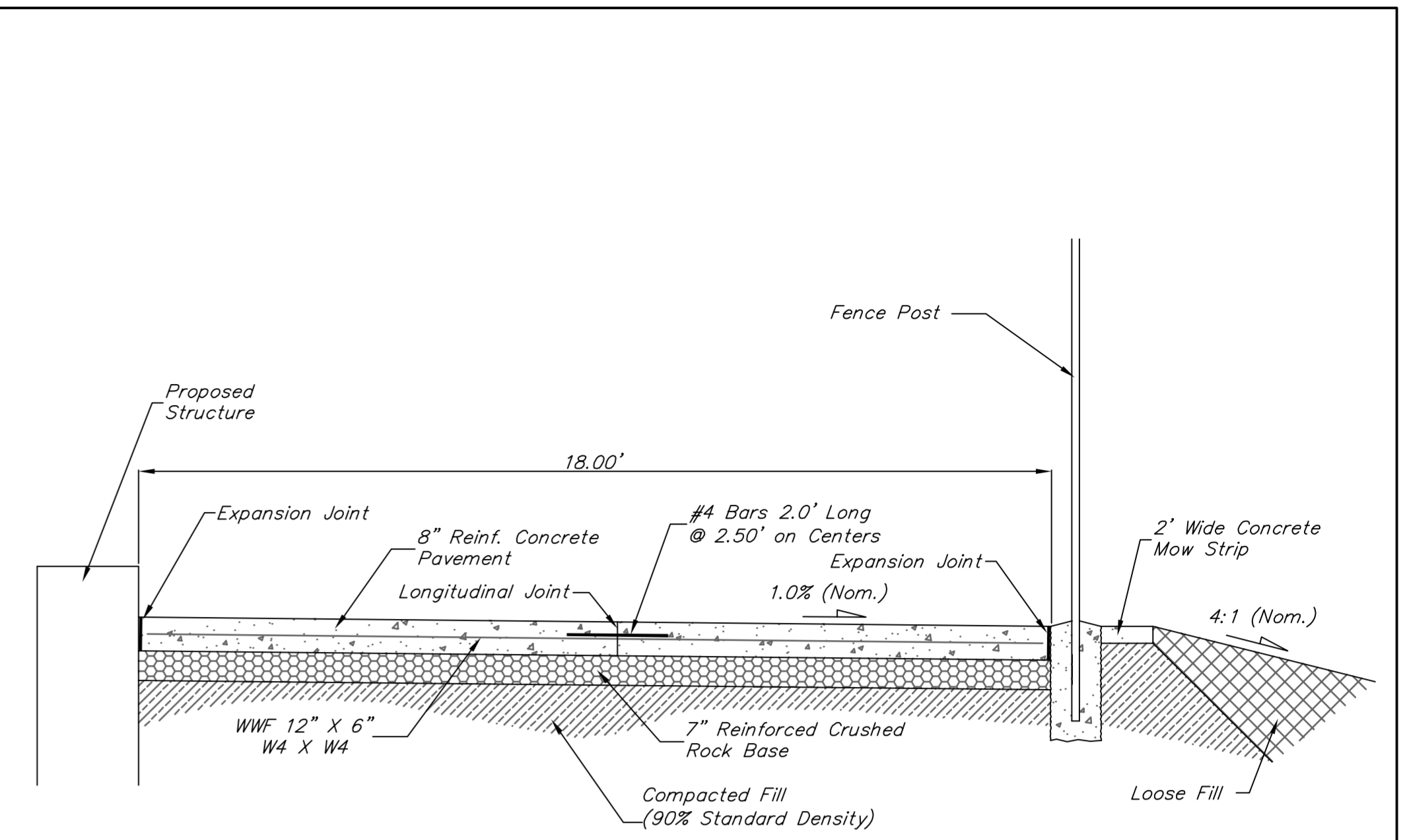
All Concrete Used in the Post Footing Shall be Cast-in-Place.

Keepers Shall be Provided for Each Gate. These Keepers Shall Consist of a Mechanical Device for Securing the Free End of the Gate When in Full Open Position.

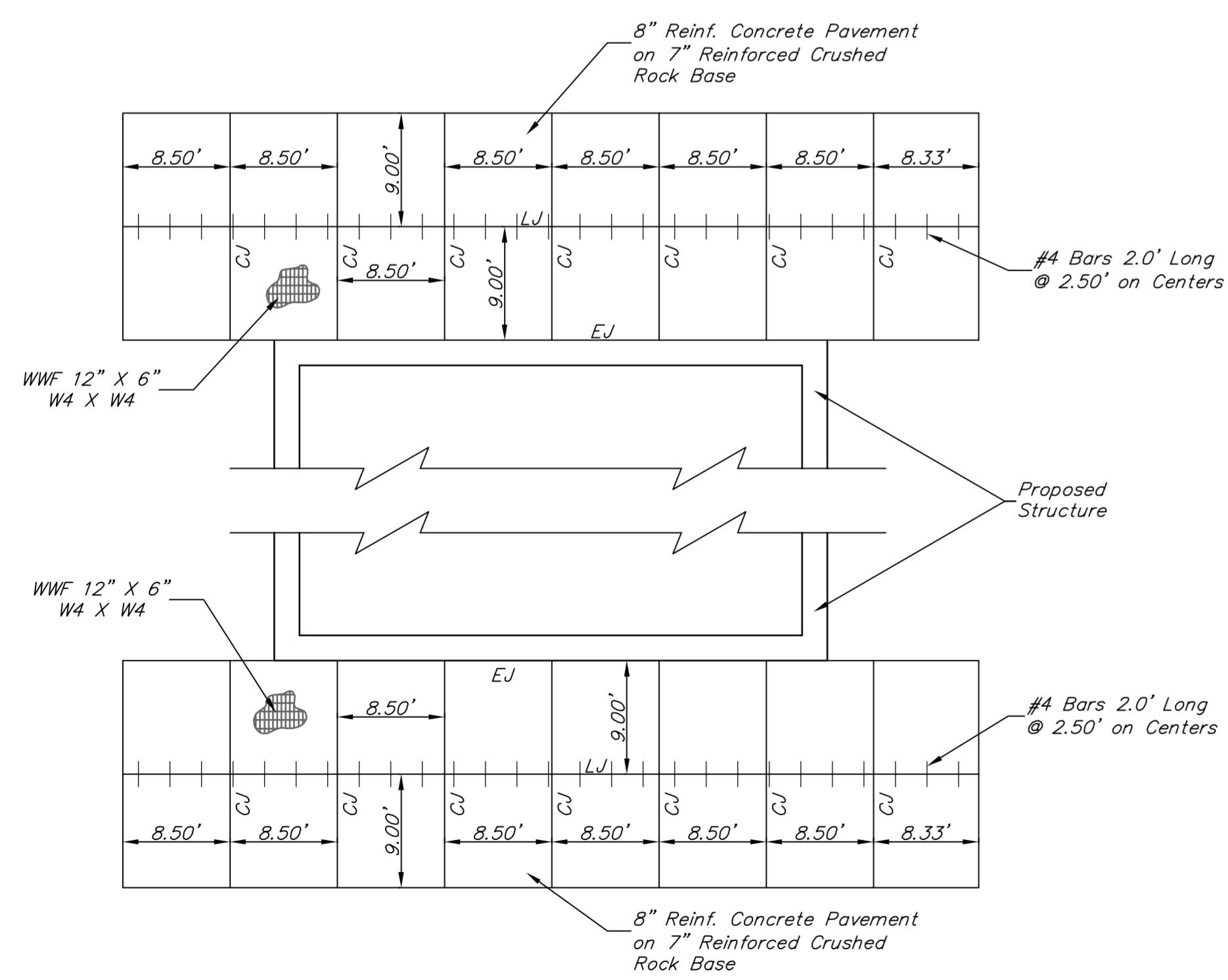
Barbed Wire Shall be Double Strand Twisted 12 Gauge Zinc Coated Wire with 4-Point Barbs and Shall Comply with the Requirement of ASTM A-121, Class 3.



YARD HYDRANT & BACK FLOW PREVENTER DETAIL

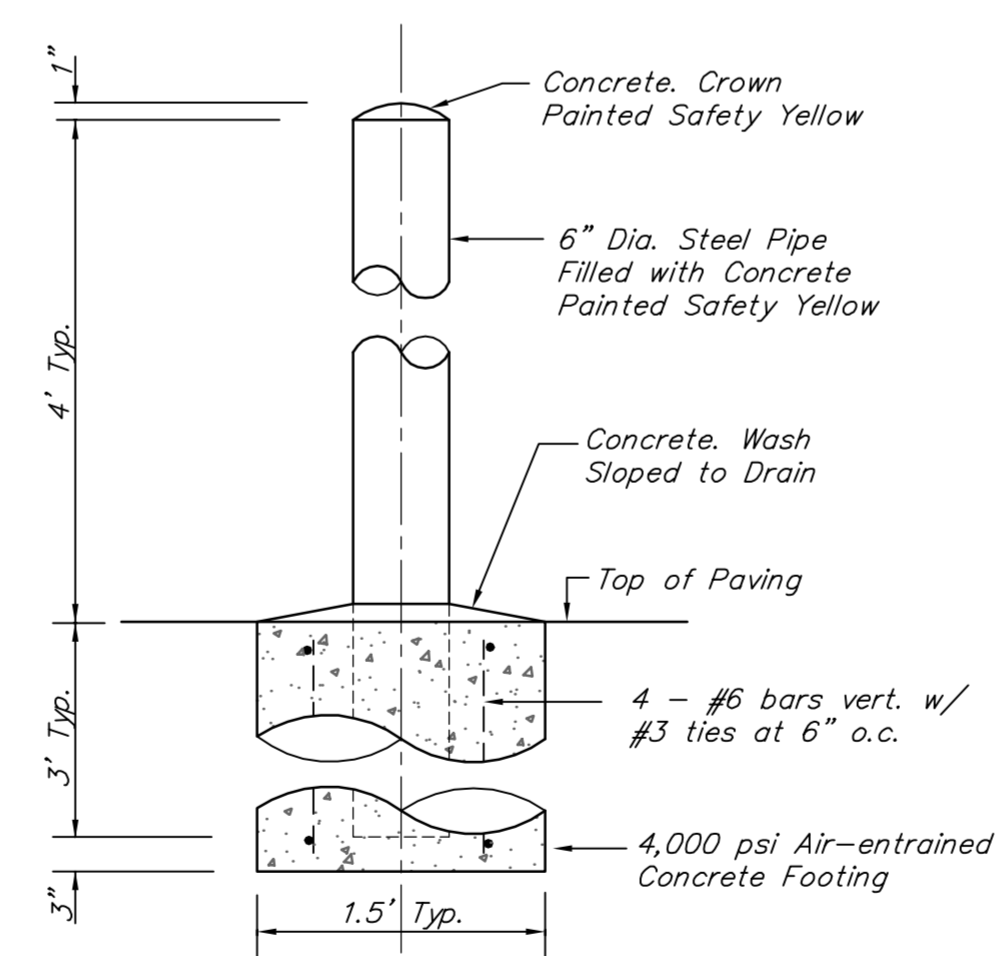


CONCRETE PAD DETAIL

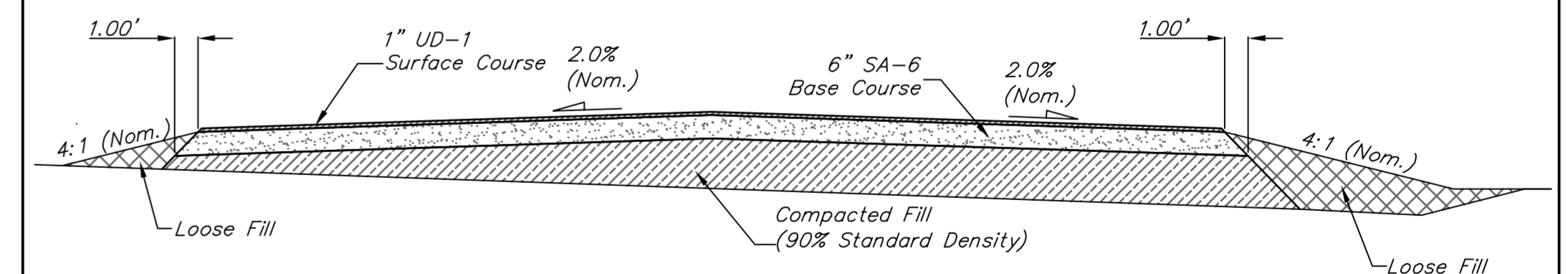


JOINT PLAN

EJ - Expansion Joint
CJ - Contraction Joint
LJ - Longitudinal Joint



PIPE BOLLARD DETAILS



GRAVEL DRIVE TYPICAL SECTION