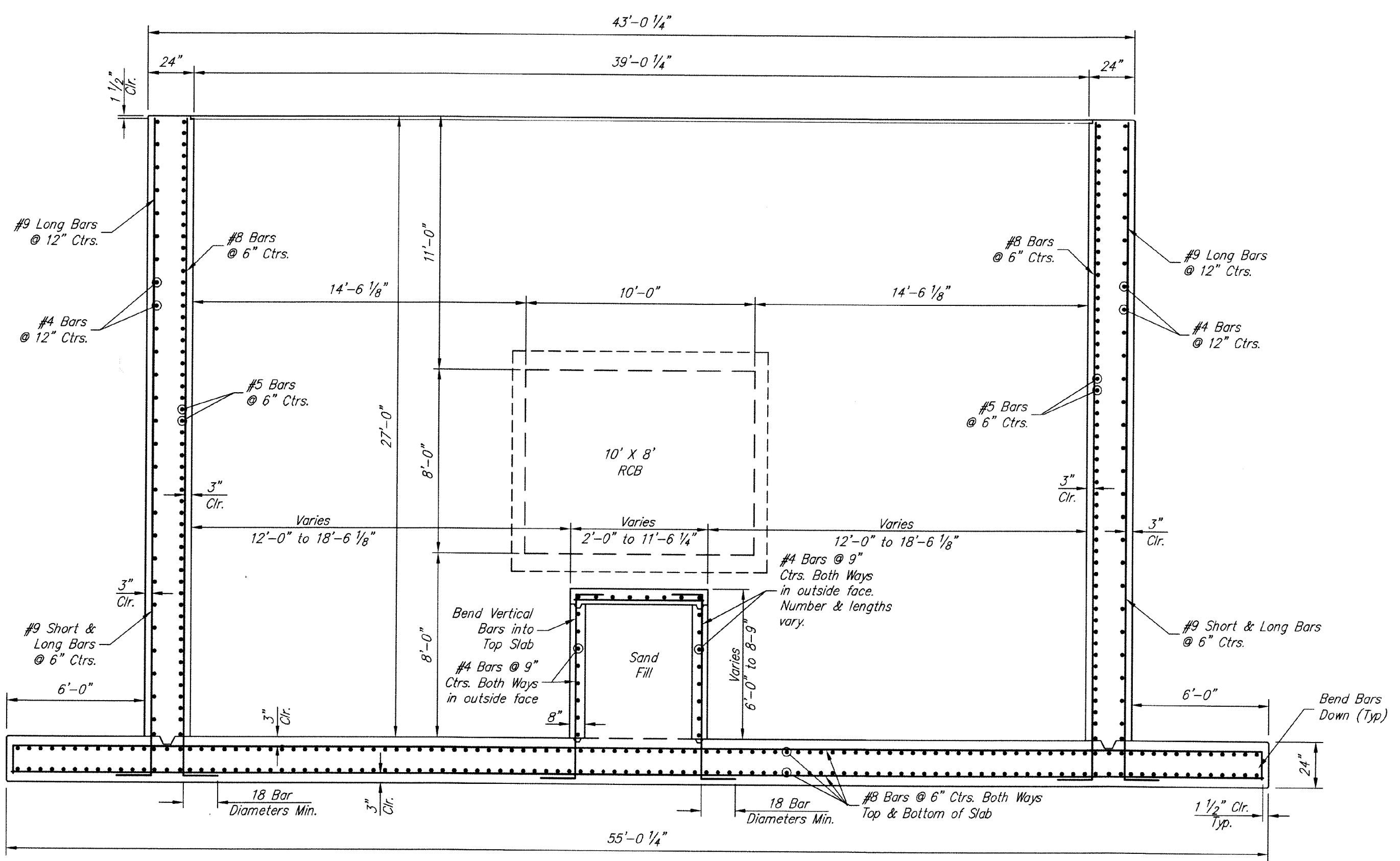
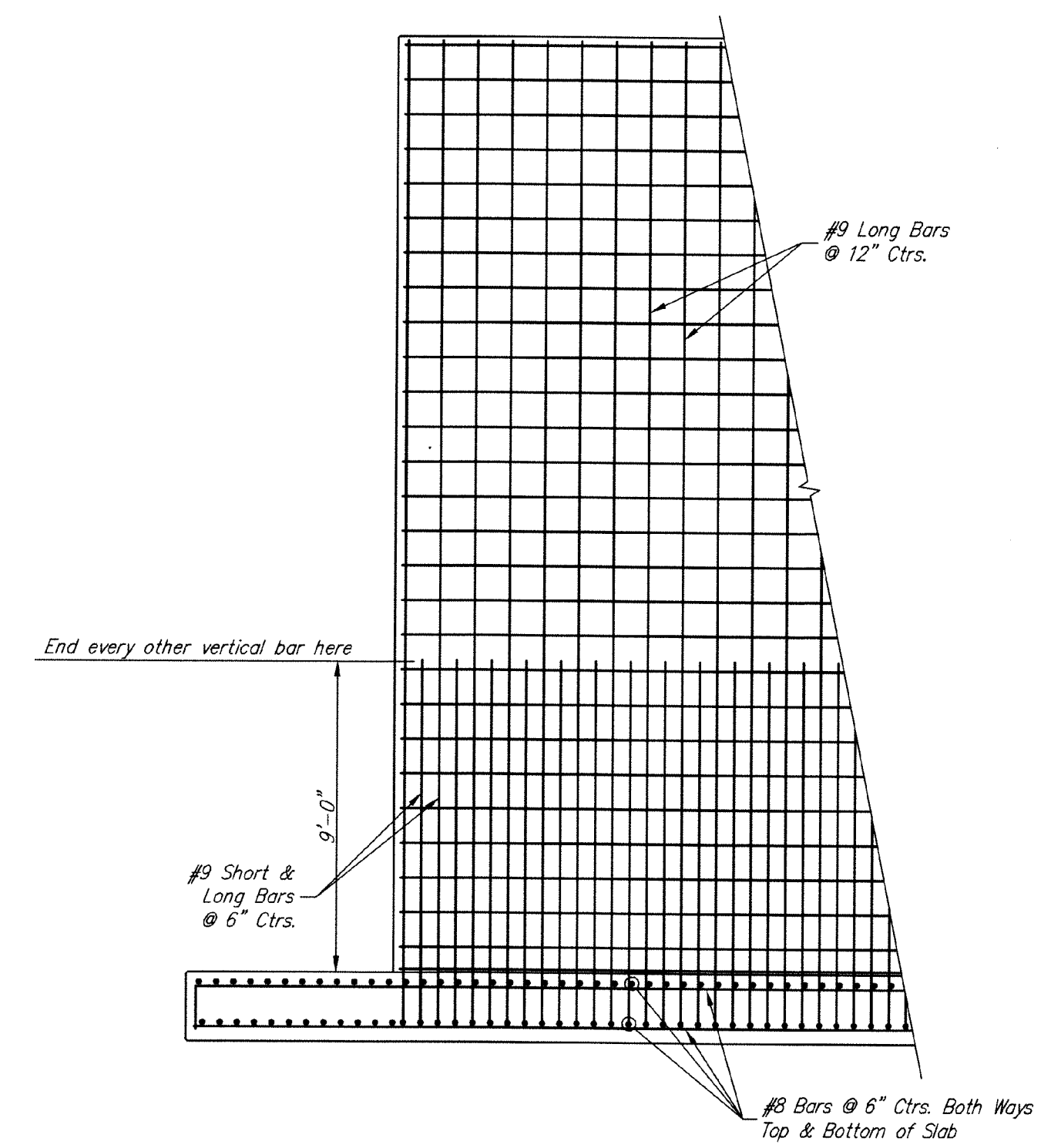


SECTION E-E
Scale: 1" = 4'

Note: Use #5 U2 Bars at sides of all openings in wall.
Use #7 U1 Bars at top and bottom of all openings in walls.



SECTION CC
Scale: 1" = 4'



OUTSIDE FACE - EXTERIOR WALLS
Scale: 1" = 4'

DEBRIS REMOVAL STRUCTURE BILL OF MATERIALS (For Information Only)		
ITEM	AMOUNT	UNITS
Concrete (Grade 4.0) (AE)	626.0	Cu. Yd.
Reinforcing Steel (Epoxy Coated) (Grade 60)	151,210.0	Lbs.
Steel "T" Beams W18 x 60	79.7	Ln. Ft.
Steel "T" Beams W8 x 21	312.0	Ln. Ft.
Aluminum Grating (1-1/2" Thick)	1,564.9	Sq. Ft.
16" x 16" Masonry Block Columns	29.0	Ln. Ft.
8" PVC Debris Part Pipe	108.3	Ln. Ft.
Excavating	3,825.0	Cu. Yd.
Waste Excavation	2,155.0	Cu. Yd.
Dewatering	1	L.S.
Access Equipment*	1	L.S.
Pumping Equipment**	1	L.S.
Electrical System***	1	L.S.
Miscellaneous Fittings****	1	L.S.

*Access Equipment to include Access Doors, Ladders, Ladder Cages and Complete Catwalks.
 **Pumping Equipment to include Submersible Pump, Piping, Lift Fittings and All Necessary Controls.
 ***Electrical System to include Connection to Westar Energy, One Pole, Conduit, Wiring, Light Fixtures and Power Controls, including Cabinets.
 ****Miscellaneous Fittings to include Angle Irons, Clips, Straps, Wall Anchor Plates and Fasteners, including Studs, Nuts and Bolts.

This list is not to be considered all-inclusive. Lump Sum Bid Item for "Debris Removal Structure" shall include all Labor, Material, Parts and Equipment necessary to provide a complete, operating structure in general accordance with the Project Plans and Specifications.

Drawing File: E:\Projects\Meridian Drainage\Details\Online Filter Details.dwg (Reinf 02)
 Project No. 0802-E038 CAPITAL IMPROVEMENT PROJECT
 Design: KEK
 Drawn: JAK
 Approved: JFB
 Scale: NOTED

**DEBRIS REMOVAL STRUCTURE
 REINFORCEMENT DETAIL - SHEET 2**
 MERIDIAN AVENUE DRAINAGE OUTFALL PROJECT

Baughman Company, P.A.
 315 Ella St. Wichita, KS 67211 P 316-262-7271 F 316-262-0149
 ENGINEERING | SURVEYING | PLANNING | LANDSCAPE ARCHITECTURE

