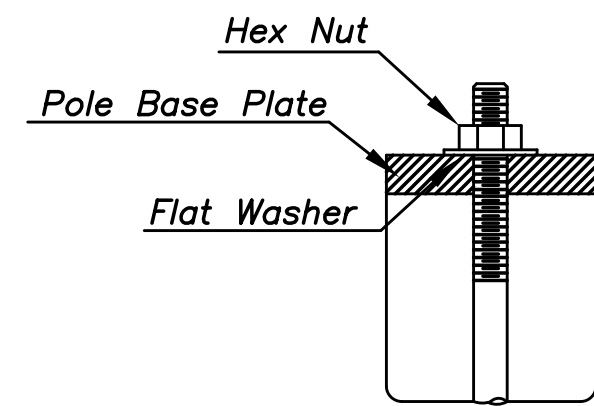
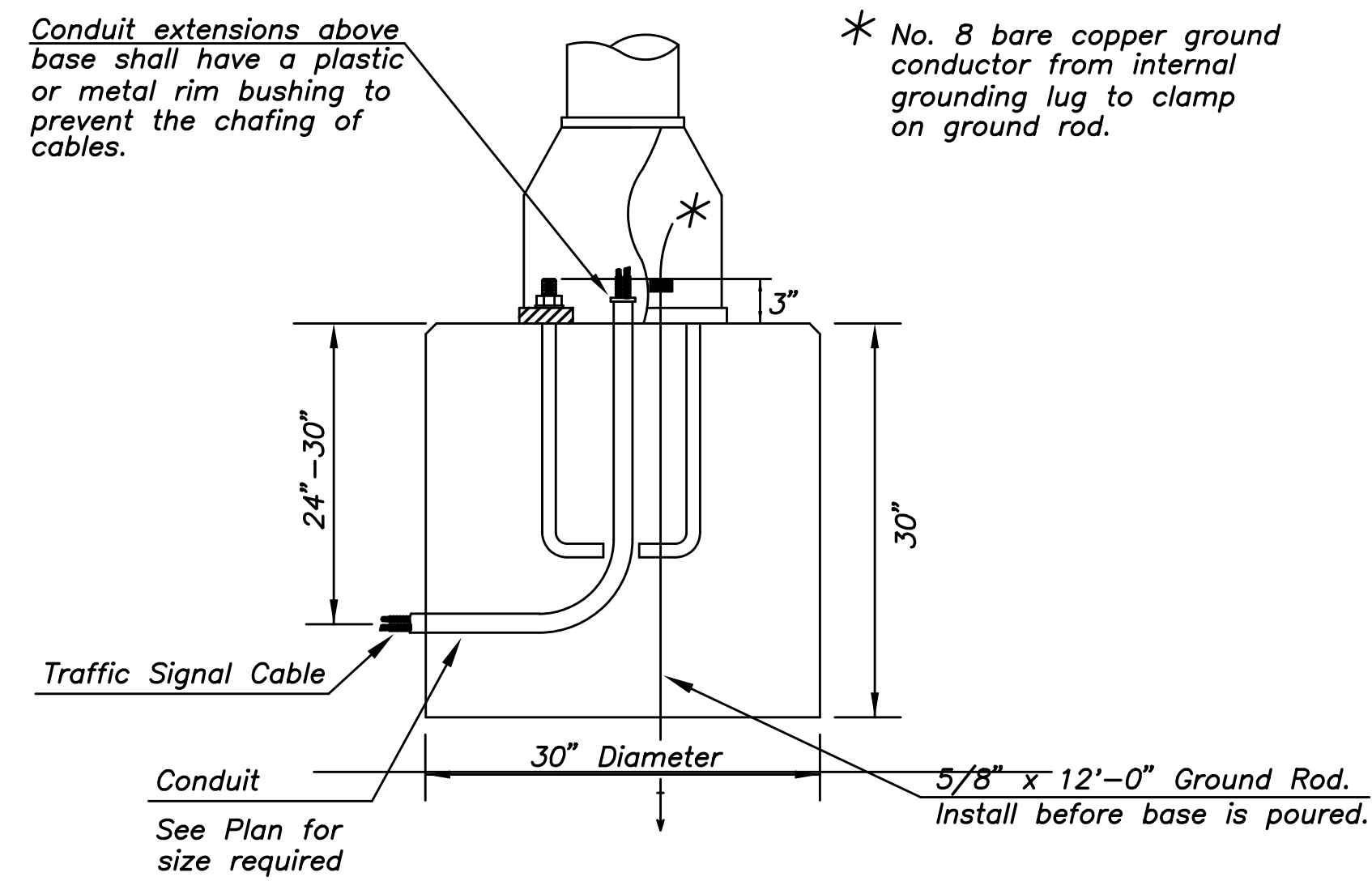
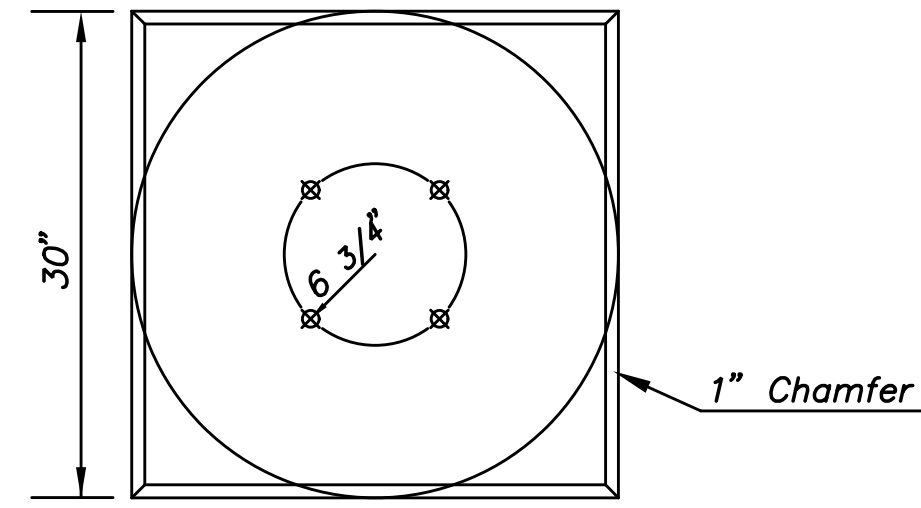


DSNR: DRM OPER: SVB SCALE: i:/2010/10312/Standards/10312-Pedestal.dgn LAST REV: 4-8-2011 BY: svb

Use Keystone "No-Weld Number 1 Anti-Seize Compound" on all bolts & nuts.

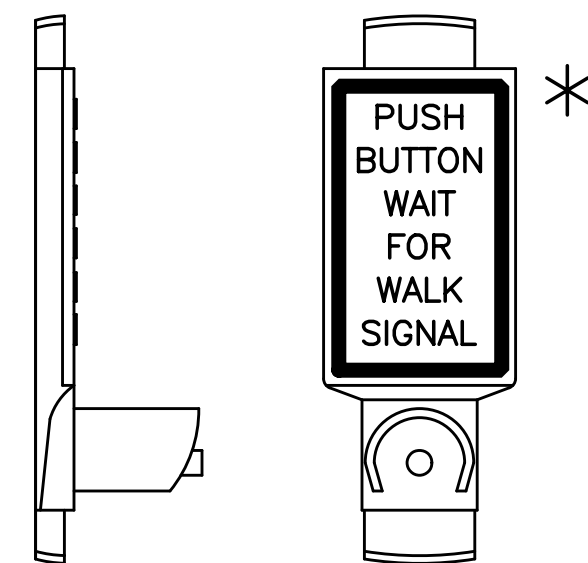


ANCHOR BOLT DETAIL



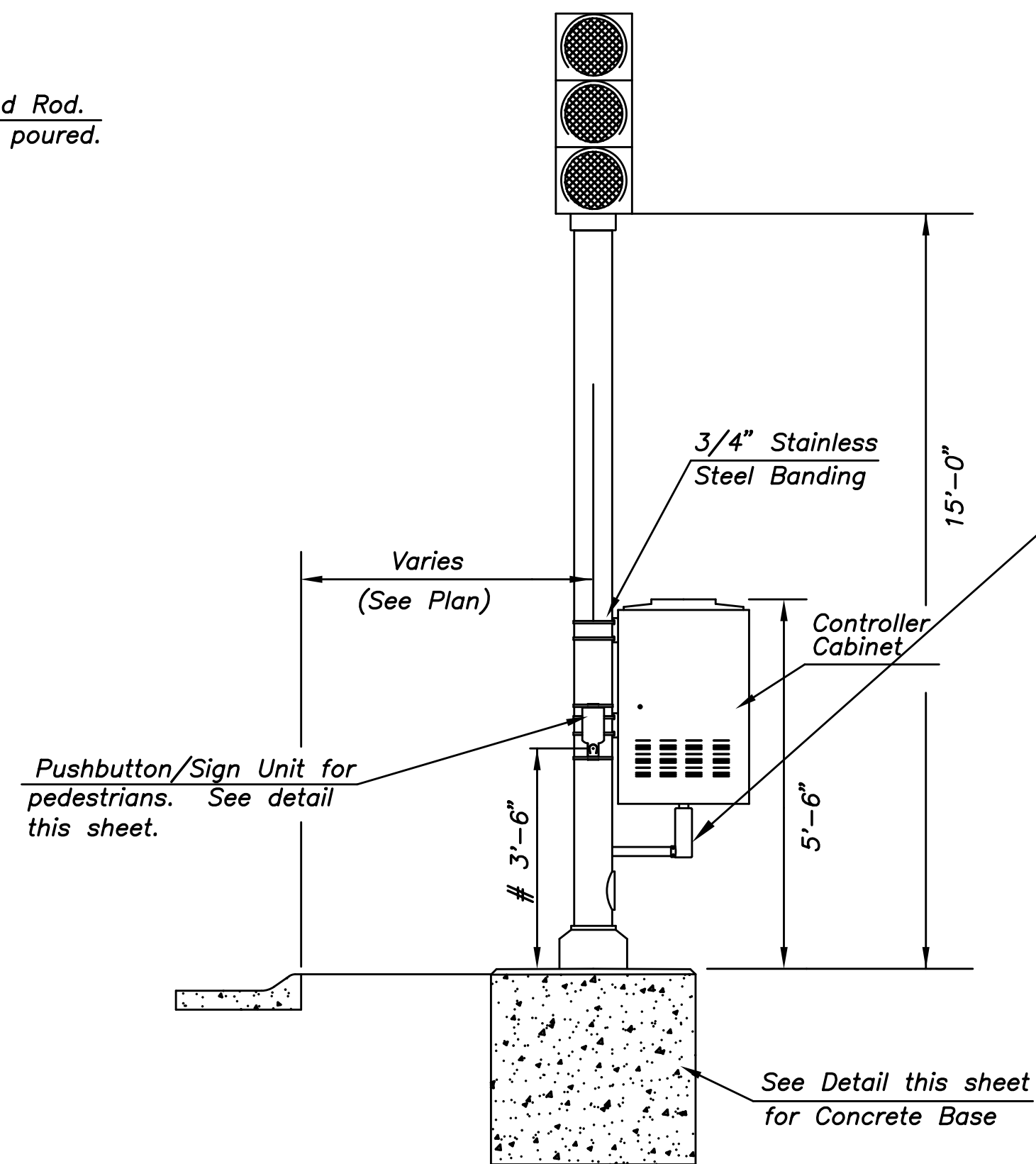
CONCRETE BASE DETAIL

*NOTE: MESSAGE TO BE CAST WITH HOUSING (ONE PIECE)

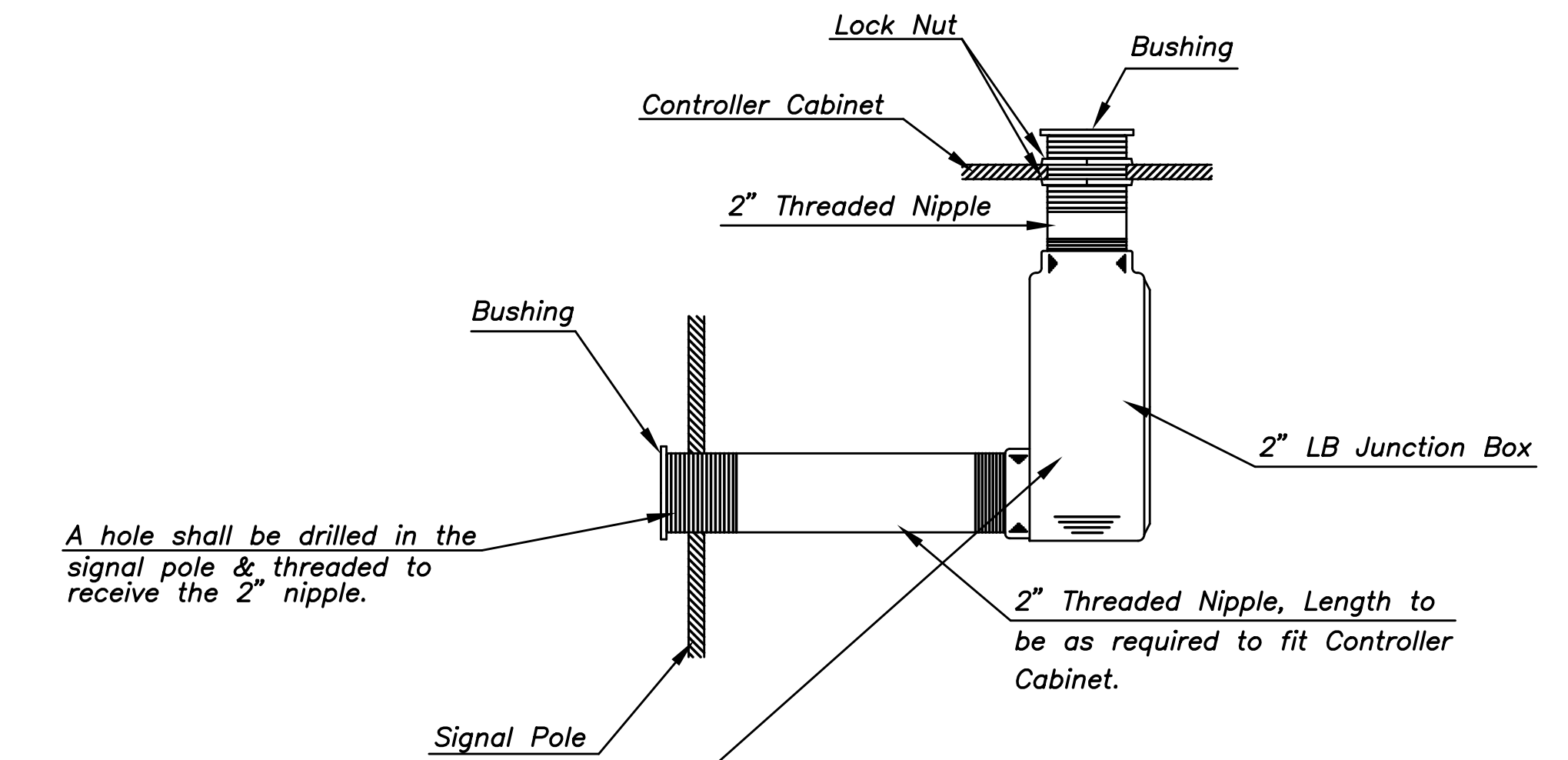


PEDESTRIAN PUSHBUTTON/SIGN UNIT DETAIL

INSTALL PEDESTRIAN PUSHBUTTON UNDERNEATH CORRESPONDING PEDESTRIAN SIGNAL HEAD ON SIDE OF POLE NEAREST CROSSWALK. UNIT SHALL BE FIRMLY ATTACHED TO THE SIDE OF POLE WITH 3/4" STEEL BANDS. SHARP ENDS SHALL BE FOLDED UNDER TO PREVENT INJURY TO PEDESTRIANS.



TRAFFIC SIGNAL PEDESTAL



From Sidewalk Finish Grade to Center of Pushbutton.

<p>THE CITY OF WICHITA</p> <p>CITY ENGINEER'S OFFICE 455 NORTH MAIN STREET WICHITA, KANSAS 67202 (316) 268-4901 (316) 268-4114 FAX</p>	39th St. & Webb Rd.	
	TRAFFIC SIGNAL PEDESTAL & CONCRETE BASE DETAIL SHEET	
	PROJECT NUMBER 472-84720	
	DRAWN BY: T.M.	SCALE NO SCALE
CITY OF WICHITA DEPARTMENT OF PUBLIC WORKS		
DIVISION OF TRAFFIC ENGINEERING WM. G. MCKINLEY P.E. TRAFFIC ENGINEER		SHEET 20 OF 31