

# PAVING IMPROVEMENTS TO SHORELINE

## FROM THE E.L. LOT 16 TO THE W.L. LOT 22

### EMERALD BAY ESTATES 2ND ADDITION

#### PROJ. #472-84867 (766286)

#### GENERAL NOTES

1. Contractor will be required to provide a minimum advance notice of seventy-two hours (72) to utility companies prior to starting any excavation as follows:

Kansas One-Call 1-800-DIG SAFE  
The Contractor must notify the following in case of an emergency:

Cox Communications	262-0661
Kansas Gas Service	383-8600
Westar	383-8600
Aquila	1-800-303-0357
SBC	1-800-286-8313
City of Wichita Water Department	262-6000
City of Wichita Sewer Maintenance	262-6000

2. Underground utility service lines and overhead utility pole lines are to be adjusted as necessary by others prior to construction unless the plans specifically call for their adjustment by the Contractor or unless the plans specifically identify a utility to be adjusted by its owner during construction. Existing utilities and their location, as shown on the plans, represent the best information obtainable for design. Location information has been obtained from the various utility companies and is either from company record drawings or company-provided field locations. The Contractor will be required to work around existing utilities within the right-of-way which do not conflict with proposed construction.

3. Rubble from the removal of miscellaneous structures and excess excavation which is to be wasted shall be disposed of on sites to be provided by the Contractor. These sites shall be approved by the Engineer as to suitability, appearance and site location. Locations that, in the opinion of the Engineer, will leave an unsightly appearance will not be approved.

4. All disposal sites must be approved by the Kansas Department of Health and Environment. Material either stockpiled or disposed of in a flood plain would require a Kansas State Board of Agriculture permit. Any material dumped in waters of the United States or wetlands is subject to U.S. Corps permitting regulations. Any material buried or stockpiled beyond approved of Engineers construction limits would require additional archeological investigations unless buried in a previously approved borrow location.

5. The Contractor shall give all property owners and/or tenants of developed property directly abutting the construction of this project a minimum of ten (10) days advance notice prior to start of construction.

Prior to final project acceptance, representatives of the Contractor, Owner, and Engineer shall meet on site to conduct a final project evaluation. A punchlist agreed upon by all parties shall be prepared and all items addressed prior to final project acceptance.

6. All waste areas for excess cut must be approved by the engineer. All excess material is to remain on site.

7. The Contractor shall seed, fertilize and mulch all disturbed areas upon completion of construction. Seeding shall be incidental to the bid item for "Project Seeding". Reserve 'B' and the Shoreline Street ROW shall be "Permanent Seeding", all other areas may be "Temporary Seeding".

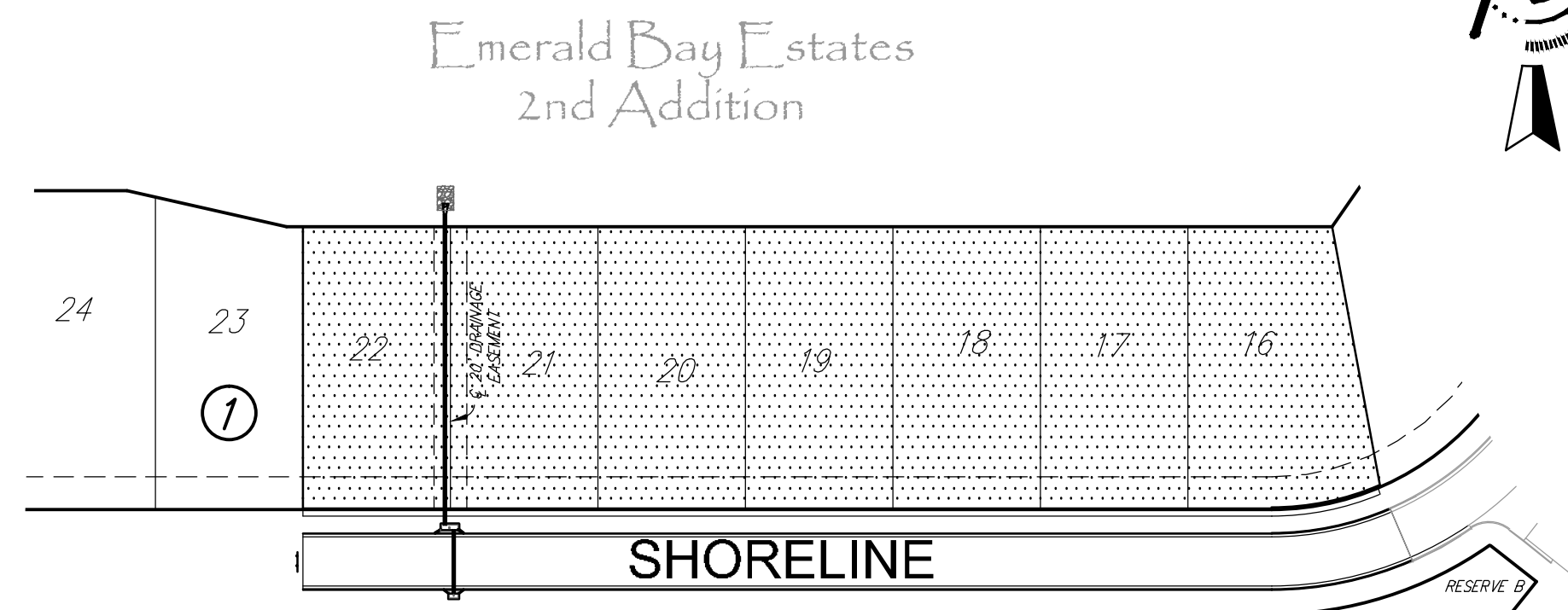
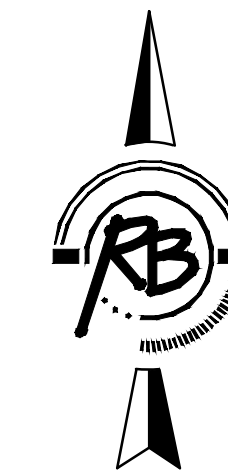
#### BENCH MARKS

BENCHMARK #1 COW DISK AT NORTHWEST CORNER OF INTERSECTION OF 21ST AND HOOVER 48.50' WEST OF CENTERLINE OF HOOVER AND 28.0' NORTH OF CENTERLINE OF 21ST STREET.  
ELEVATION: 1326.94 (NAVD 88)

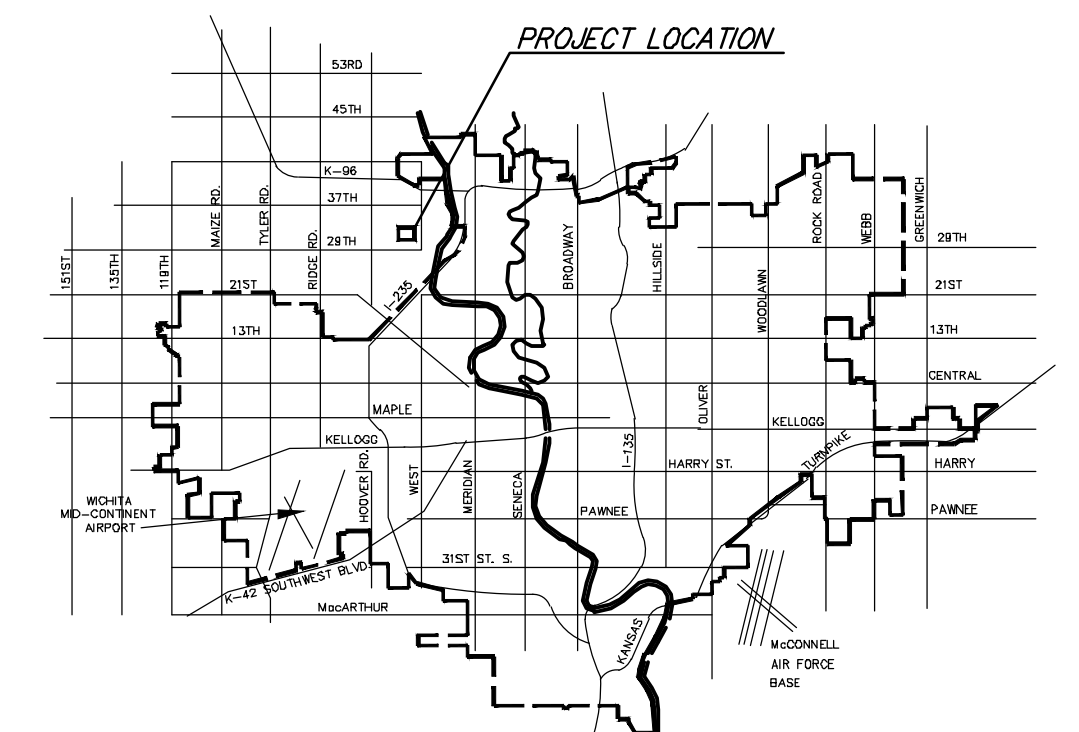
BENCHMARK #2 COW DISK AT SOUTHWEST CORNER OF INTERSECTION OF 29TH AND HOOVER, 48.50' WEST OF CENTERLINE OF HOOVER AND 26.5' SOUTH OF SECTIONLINE.  
ELEVATION: 1330.63 (NAVD 88)

#### SHEET INDEX

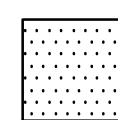
1. TITLE
2. TYPICAL SECTION
- 3-4. SHORELINE PLAN/PROFILE
5. KEY MAP
6. EROSION CONTROL PLAN
- 7-11. EROSION CONTROL BMP DETAILS
12. SIGN DETAILS



Unplatted

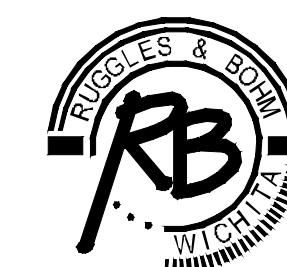


VICINITY MAP



IMPROVEMENT DISTRICT

CITY OF WICHITA, KANSAS  
GARY JANZEN, P.E. - CITY ENGINEER



Ruggles & Bohm, P.A.  
Engineering, Surveying, Land Planning

924 North Main (316) 264-8008  
Wichita, Kansas 67203 (316) 264-4621 fax  
www.rbkansas.com E-mail: info@rbkansas.com