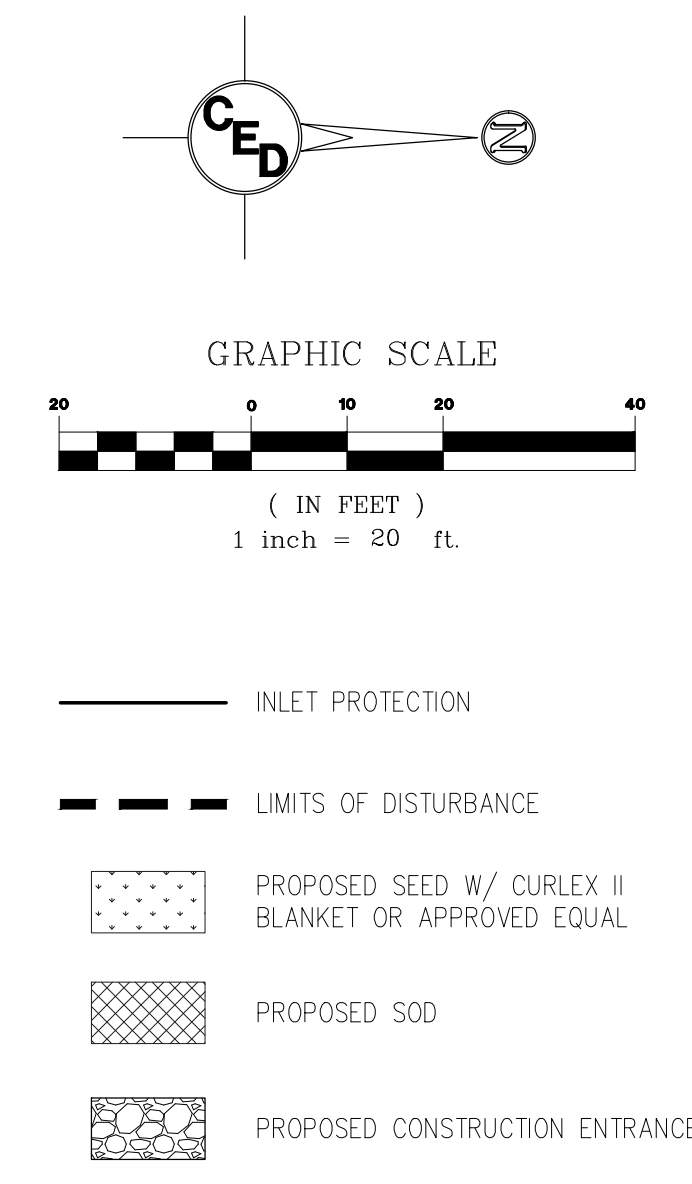
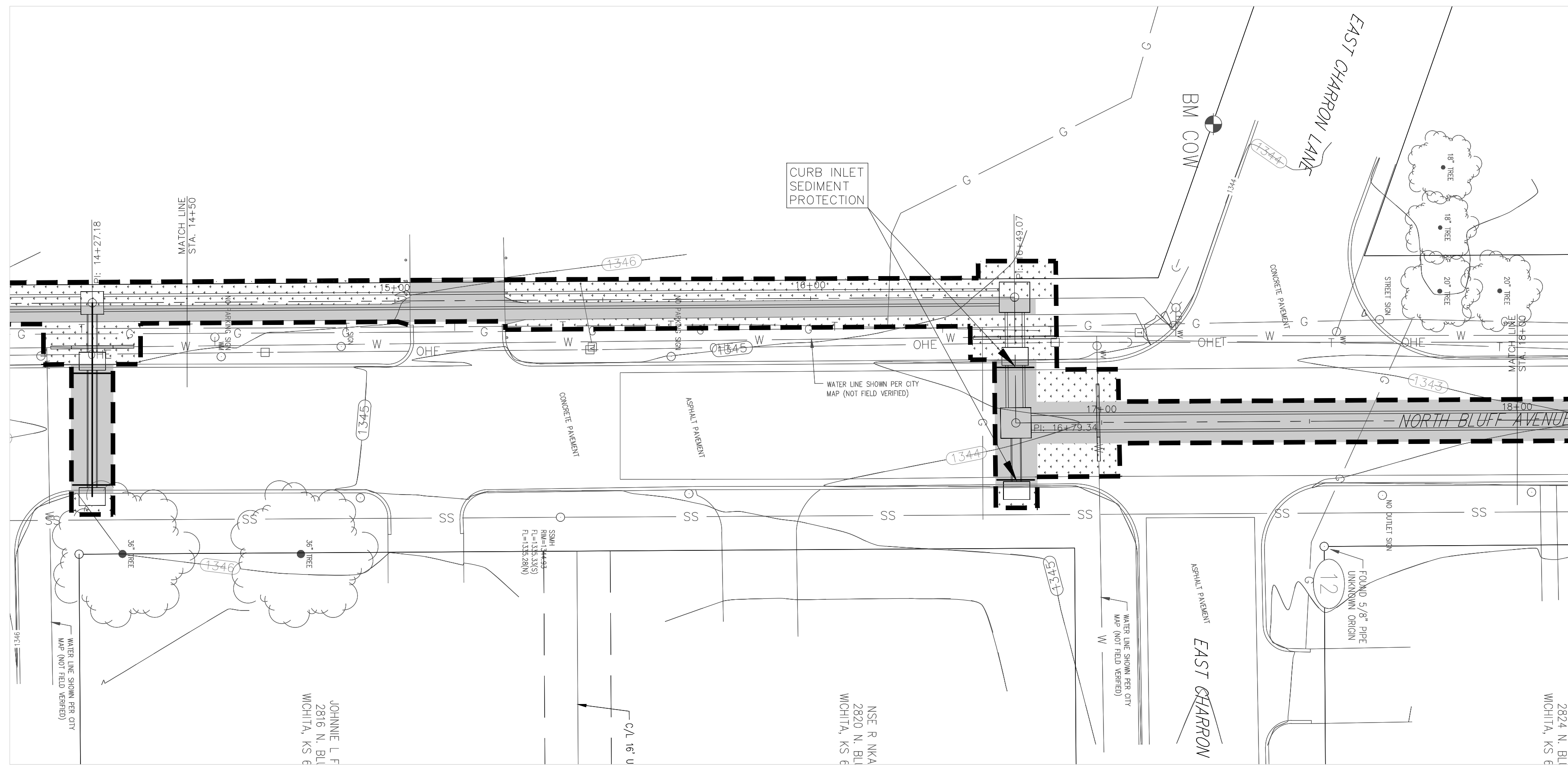


FILE LOCATION: \\CED-PC\shared\Drawings\Project Okw 12-7-09\27th St. N. & Iva Hot Spot\dwg\EC Plans.dwg TAB NAME: EC3 USER: demushat SAVED: 10/11/2011 3:17 PM PLOTTED: 10/27/2011 4:11 PM



- INLET PROTECTION
- - - LIMITS OF DISTURBANCE
- [Stippled pattern] PROPOSED SEED W/ CURLEX II BLANKET OR APPROVED EQUAL
- [Cross-hatched pattern] PROPOSED SOD
- [Circular pattern] PROPOSED CONSTRUCTION ENTRANCE

REV.	DESCRIPTION	DATE

NORTH IVA & 27TH STREET NORTH

DRAINAGE IMPROVEMENTS

SEC. 2, T27S, R1E
WICHITA, KANSAS

CERTIFIED ENGINEERING DESIGN, P.A.
CIVIL ENGINEERING SERVICES

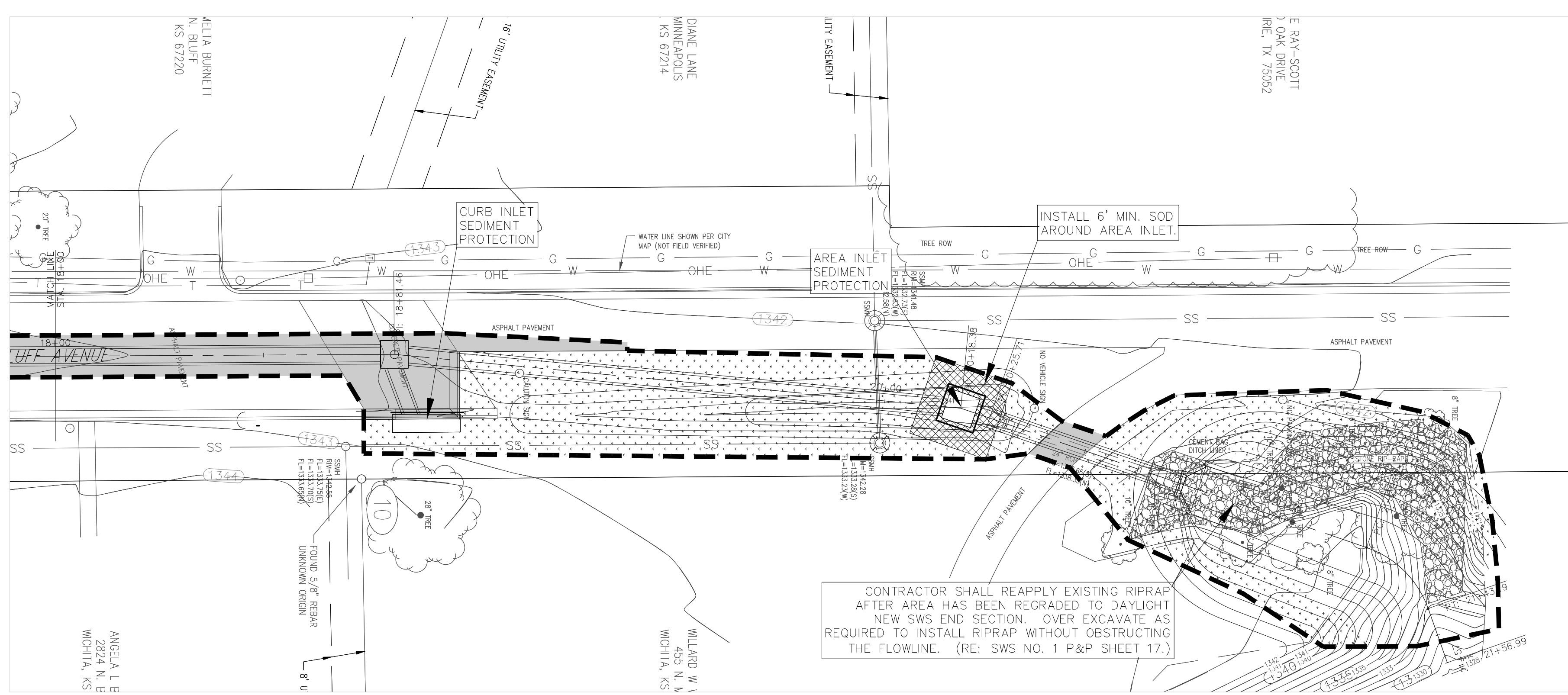


1935 WEST MAPLE STREET
WICHITA, KANSAS 67213
PH.(316)262-8808 FAX.(316)262-1669

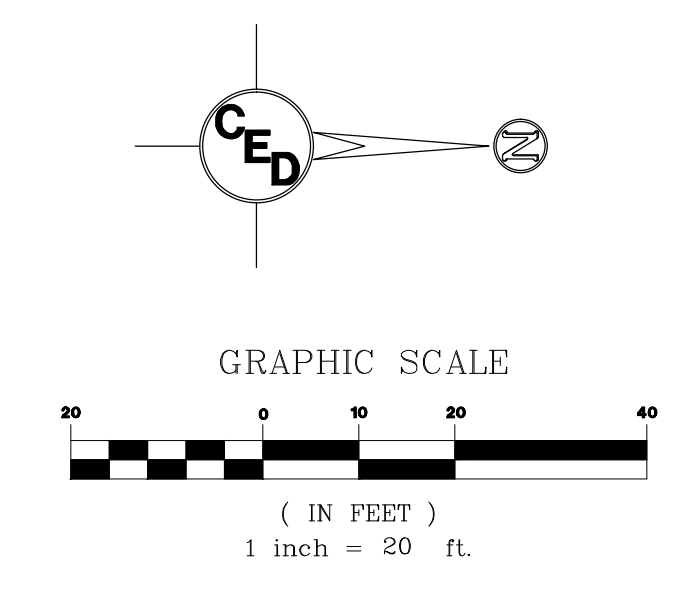
ISSUED FOR CONSTRUCTION

PROJECT NO.: 20101910
ISSUE DATE: 10/20/2011
CONTACT: C WINKLER / H FORAKER
DRAWN BY: CC, CW CHECKED BY: HDF

EROSION CONTROL PLAN



- *SEED NOTE:**
- PERMANENT SEEDING TO BE A FESCUE AND BUFFALO GRASS BLEND THAT IS SEEDED, FERTILIZED AND MULCHED IN ACCORDANCE WITH THE CITY OF WICHITA STANDARDS AND SPECIFICATIONS FOR APPLICATION RATES AND PLANTING PERIODS.
 - TEMPORARY SEEDING TO TAKE PLACE DURING PERIODS OF THE YEAR WHEN PERMANENT SEEDING SHALL NOT OCCUR. TEMPORARY SEEDING SHALL BE COVERED WITH HYDROMULCH AT THE FOLLOWING RATES: NORTH AMERICAN GREEN HYDRACM @ 3000#/ACRE AND RYE @ 5#/1,000 S.F. (RE: CITY OF WICHITA SPECIFICATIONS FOR APPLICATION RATES AND PLANTING PERIODS.)



- INLET PROTECTION
- - - LIMITS OF DISTURBANCE
- [Stippled pattern] PROPOSED SEED W/ CURLEX II BLANKET OR APPROVED EQUAL
- [Cross-hatched pattern] PROPOSED SOD
- [Circular pattern] PROPOSED CONSTRUCTION ENTRANCE