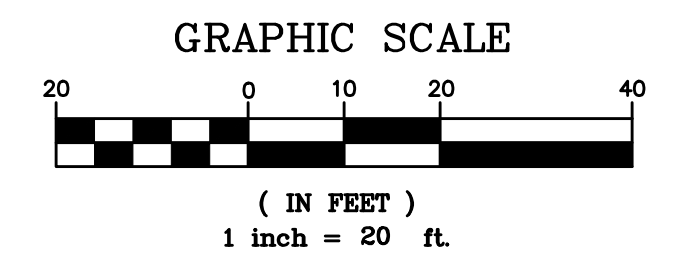
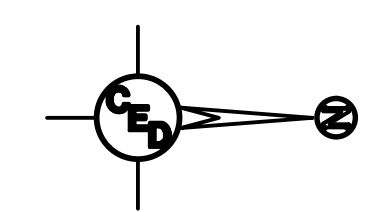
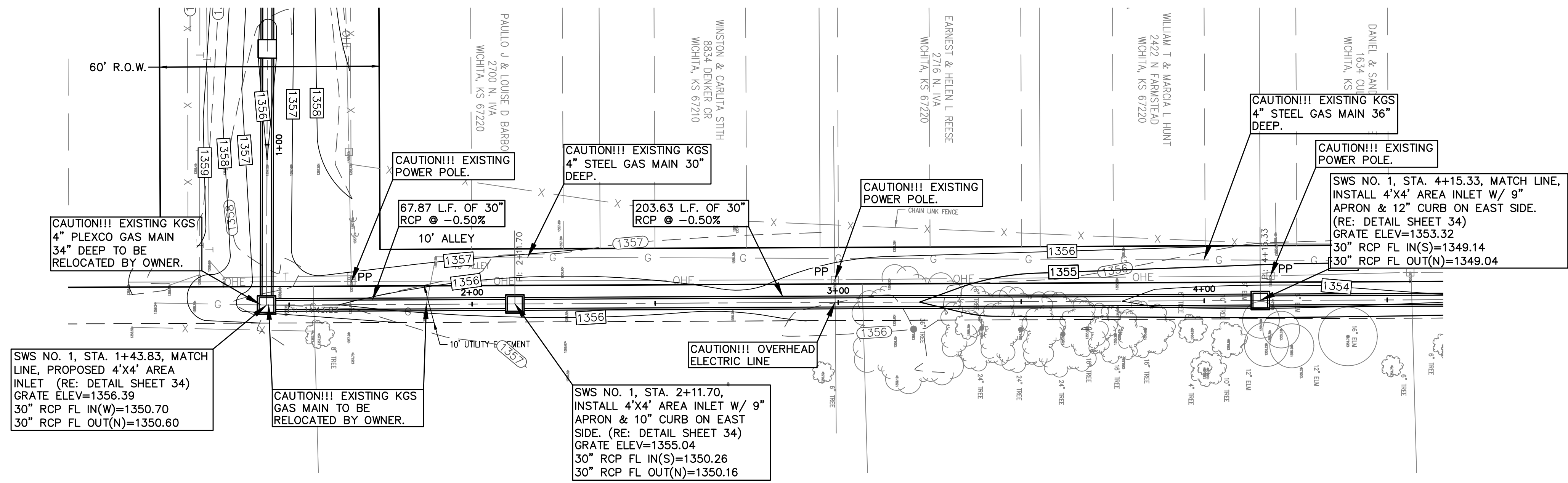


REV.	DESCRIPTION	DATE

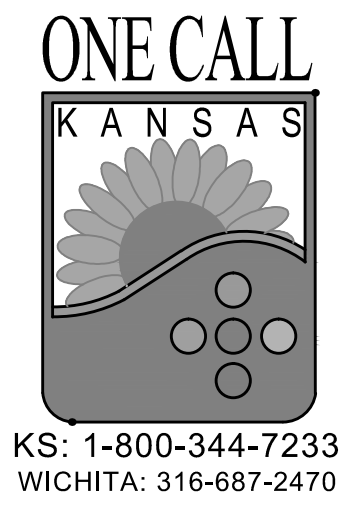


--- 1358 --- EXISTING CONTOUR  
--- 1357 --- PROPOSED CONTOUR



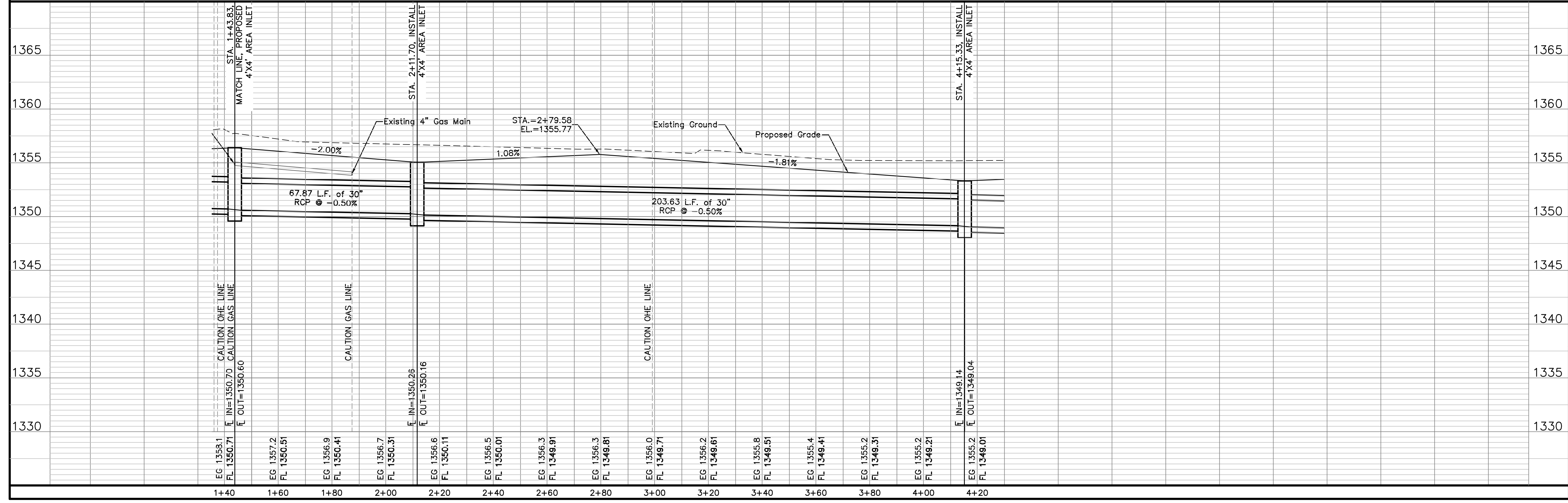
**UTILITY RELOCATION NOTE:**  
ALL UTILITY OWNERS HAVE BEEN NOTIFIED OF REQUIRED UTILITY RELOCATIONS DUE TO PROJECT IMPROVEMENTS. CONTRACTOR SHALL VERIFY ALL EXISTING UTILITY ELEVATIONS AND COORDINATE WITH UTILITY OWNERS ON THE STATUS OF THE REQUIRED UTILITY RELOCATIONS AND/OR PLANS FOR RELOCATION DURING CONSTRUCTION.

KANSAS GAS SERVICE	PAMELA GUNTER	O: 1-316-832-3187	O: 1-888-482-4950
WESTAR ENERGY	HEIDE HANCOCK	O: 1-316-261-6824	O: 1-888-383-1183
AT&T	JASON EDWARDS	O: 1-316-268-2008	O: 1-800-870-8390
COX COMMUNICATIONS	JEREMY WALLACE	C: 1-316-260-7195	O: 263-2061
C.O.W. WATER & SEWER	GREG LOLLEY	O: 1-316-268-4555	



**NORTH IVA & 27TH STREET NORTH**  
**DRAINAGE IMPROVEMENTS**  
SEC. 2, T27S, R1E  
WICHITA, KANSAS

**SWS Line 1**



CERTIFIED ENGINEERING DESIGN, P.A.  
CIVIL ENGINEERING SERVICES



1935 WEST MAPLE STREET  
WICHITA, KANSAS 67213  
PH.(316)262-8808 FAX.(316)262-1669

ISSUED FOR CONSTRUCTION

PROJECT NO.: 20101910  
ISSUE DATE: 10/20/2011  
CONTACT: C WINKLER / H FORAKER  
DRAWN BY: CC, CW CHECKED BY: HDF

**SWS LINE 1 PLAN AND PROFILE**