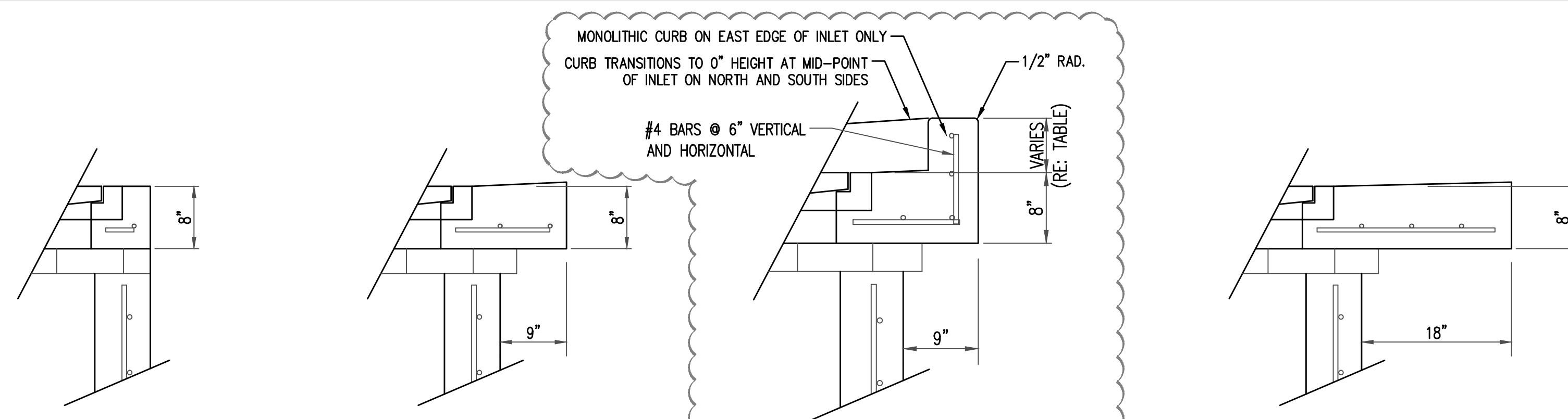


TOP VIEW

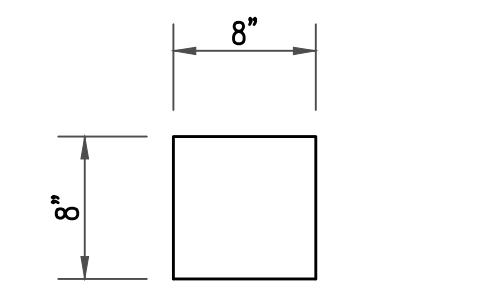


FLUSH STYLE TOP
NO APRON

9" APRON
* APRON TO EXTEND ON ALL 4 SIDES OF INLET.
DESIGNER TO DESIGNATE APRON SIZE.

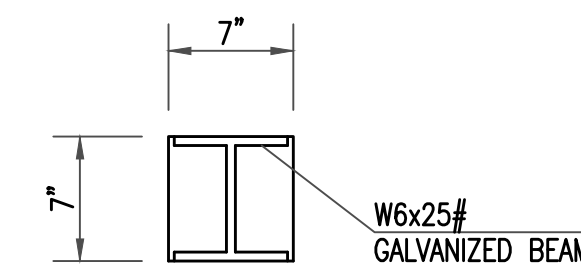
9" APRON W/ CURB

18" APRON



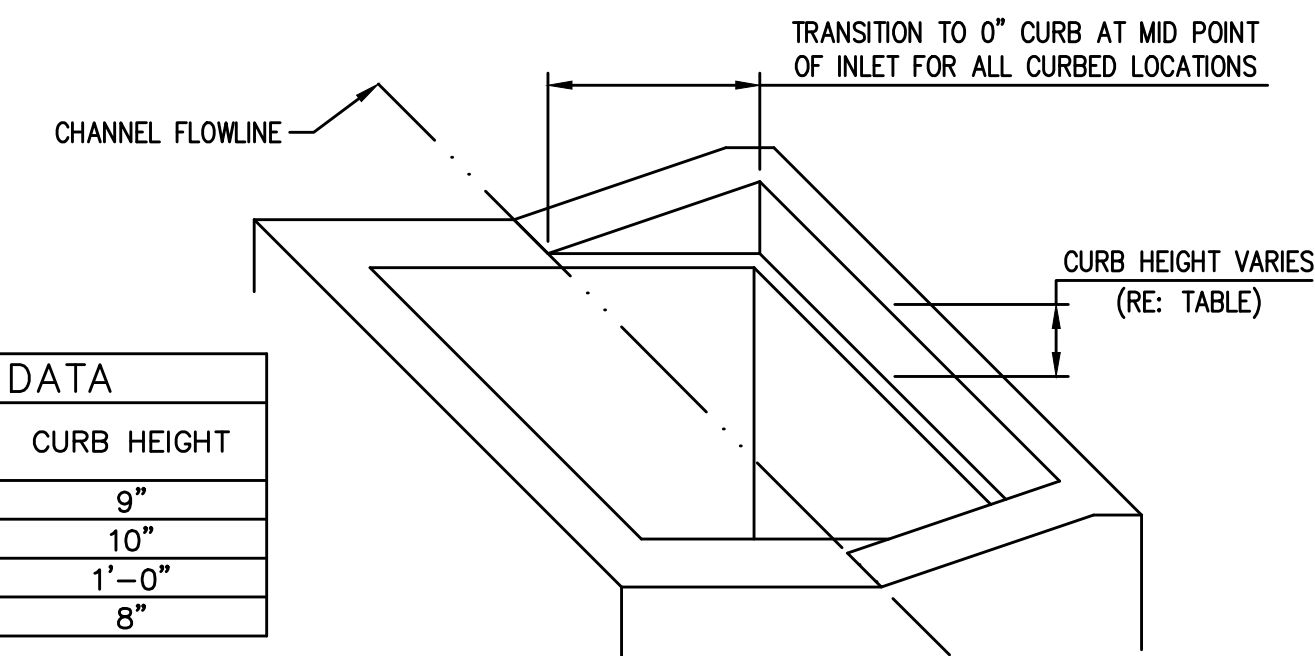
CONCRETE BEAM POCKET

CONCRETE BEAM REQUIRED FOR THIS INLET

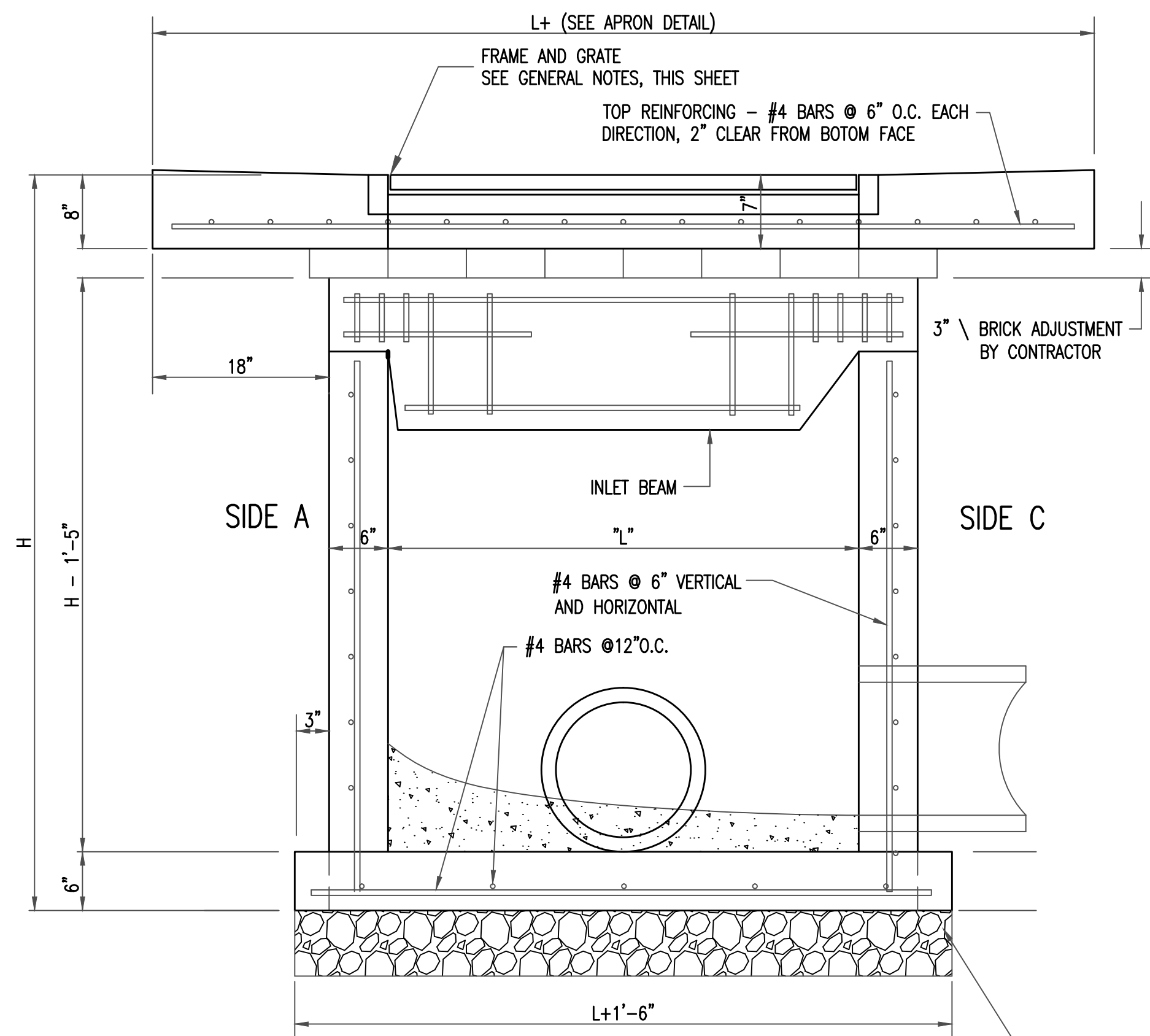


GALV. STEEL BEAM POCKET

AREA INLET CURB DATA		
STATION	OFFSET	CURB HEIGHT
1+43.83	RIGHT	9"
2+11.70	RIGHT	10"
4+15.33	RIGHT	1'-0"
6+65.67	RIGHT	8"

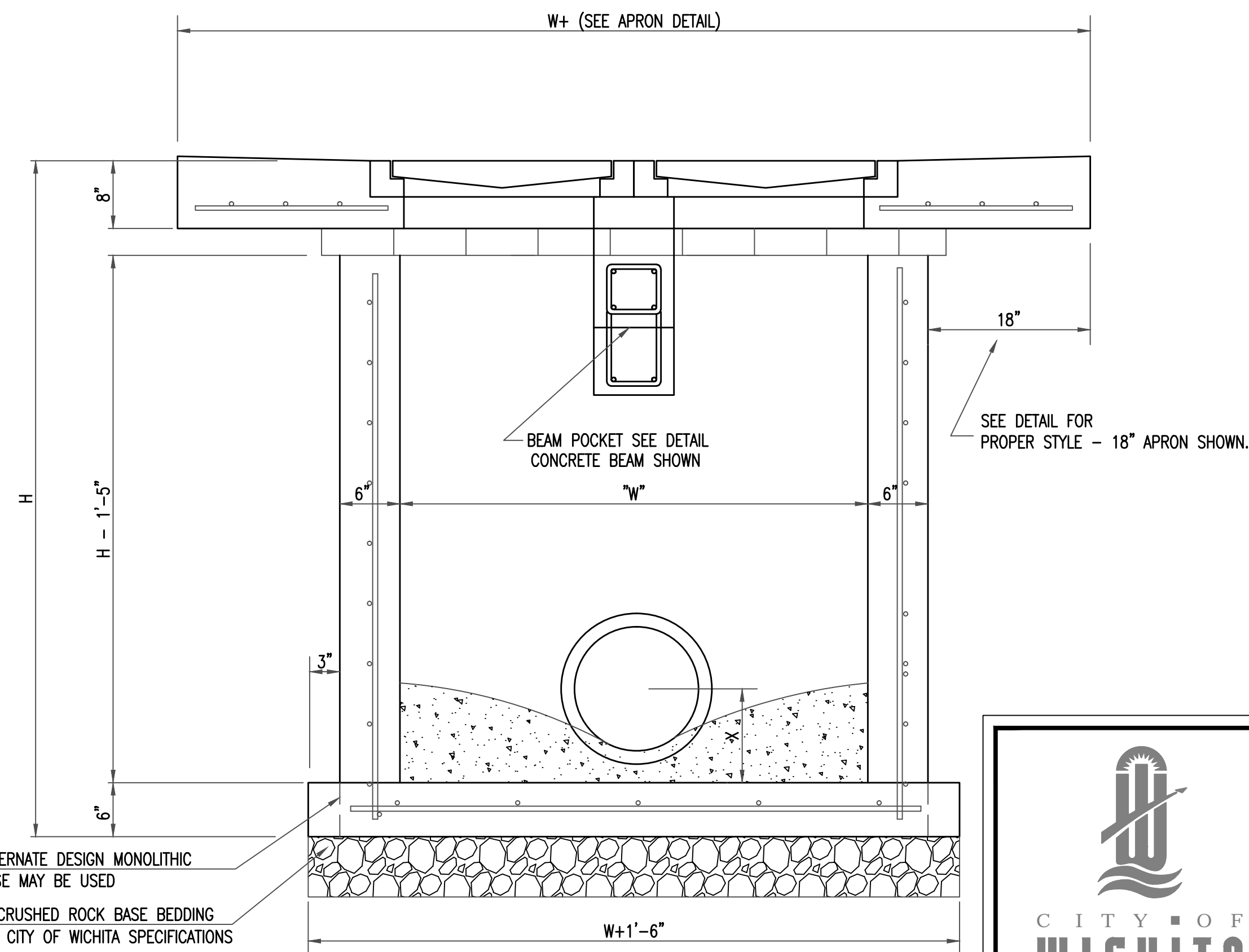


9" APRON W/ CURB ISOMETRIC VIEW



SECTION "A-A"

6" CRUSHED ROCK BASE BEDDING
PER CITY OF WICHITA SPECIFICATIONS

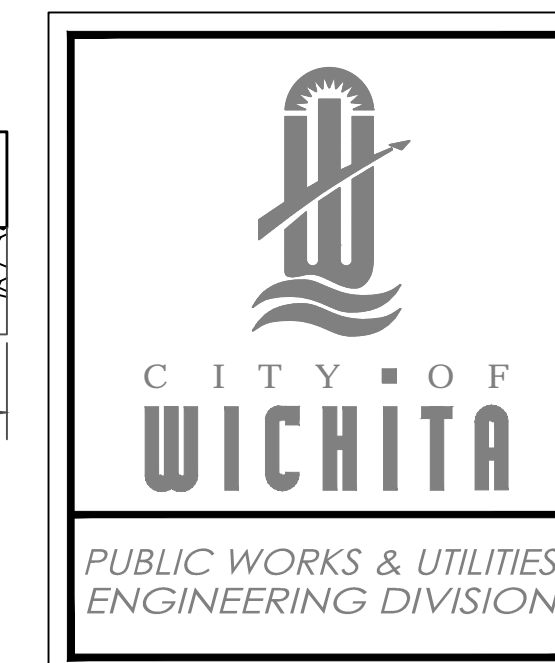


SECTION "B-B"

ALTERNATE DESIGN MONOLITHIC
BASE MAY BE USED
6" CRUSHED ROCK BASE BEDDING
PER CITY OF WICHITA SPECIFICATIONS

GENERAL NOTES

1. GRATE FRAME TO BE INSTALLED ON THIN MORTAR CUSHION TO INSURE FULL SUPPORT ALONG BRICK. CONCRETE USED FOR INLET CONSTRUCTION SHALL CONFORM TO CITY OF WICHITA SPECIFICATIONS FOR CONCRETE PAVEMENT MIX.
2. INLET INVERT SHALL BE SHAPED WITH 8 SACK SAND MIX CONCRETE TO CREATE FLOW CHANNELS AND TO INCREASE HYDRAULIC EFFICIENCY SUCH THAT THE INLET WILL BE SELF CLEANING BETWEEN ALL INLET AND/OR OUTLET PIPES.
3. THE ENDS OF ALL PIPES INSTALLED IN INLETS SHALL BE CUT OFF FLUSH WITH THE INSIDE FACE OF THE INLET WALL.
4. INLET FRAME AND GRATE TO BE DEETER #2433, EJIW #5391-Z1 OR APPROVED EQUAL FOR 2'x2' SINGLE DROP INLET AND DEETER #2434, EJIW #5391 Z3 OR APPROVED EQUAL FOR 2'x4' DOUBLE DROP INLET.
5. CONTRACTOR SHALL REMOVE LIFTING HOOKS AFTER INSTALLATION. RECESSES IN INLET WALL SHALL BE GROUTED FLUSH TO THE INLET WALL WITH HYDRAULIC CEMENT AFTER THE INLET IS IN PLACE. LIFTING HOLES THRU THE INLET WALL WILL NOT BE ACCEPTED.



**DOUBLE DOUBLE
DROP INLET
WITH BEAM**

CITY ENGINEER
JAMES L. ARMOUR, P.E., L.S.

PROJECT NUMBER	OCA NUMBER	DATE
-	-	11/2010

CITY ENGINEER'S OFFICE
CITY HALL - SEVENTH FLOOR
455 NORTH MAIN STREET
WICHITA, KANSAS 67202-1620
(316) 268-4501

DESIGN	DRAWN

SHEET
_ of _

REV.	DESCRIPTION	DATE

NORTH IVA & 27TH
STREET NORTH

DRAINAGE
IMPROVEMENTS

SEC. 2, T27S, R1E
WICHITA, KANSAS

CERTIFIED ENGINEERING DESIGN, P.A.
CIVIL ENGINEERING SERVICES



1935 WEST MAPLE STREET
WICHITA, KANSAS 67213
PH.(316)262-8808 FAX.(316)262-1669

ISSUED FOR CONSTRUCTION

PROJECT NO.: 20101910
ISSUE DATE: 10/20/2011
CONTACT: C WINKLER / H FORAKER
DRAWN BY: CC, CW CHECKED BY: HDF

DROP INLET DETAILS