

Install 400 lf of 8" Cured-in-Place Liner from MH 5347-087 to MH 5347-084 (one continuous liner)

Install 212 lf of 8" Cured-in-Place Liner from MH 5347-084 to MH 5347-083

Install 305 lf of 8" Cured-in-Place Liner from MH 5347-080 to MH 5347-077

MH 5347-086
Abandon Manhole (located in grass)
(line through manhole and abandon manhole over CIPP per City Spec)
Approx depth = 2.7 ft

MH 5347-085
Abandon Manhole (located in grass)
(line through manhole and abandon manhole over CIPP per City Spec)
Approx depth = 3.7 ft

MH 5347-087
Approx depth = 2.6 ft

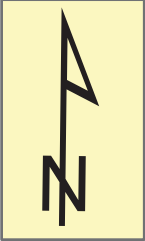
MH 5347-084
Depth not measured

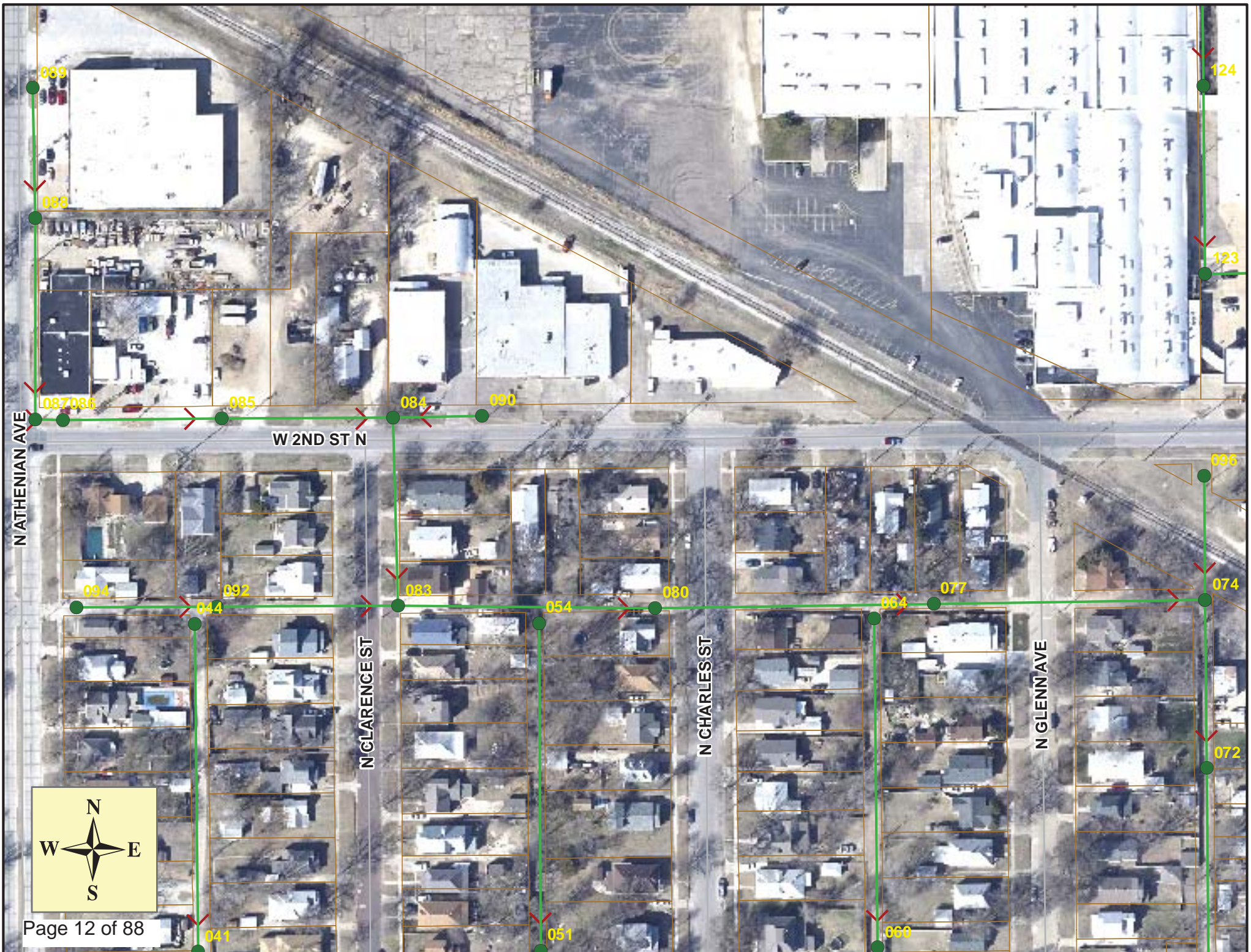
MH 5347-083
Depth not measured

MH 5347-080
Depth not measured

MH 5347-077
Approx depth = 5.3 ft

SITE 2







Video Inspection Master Report

12/13/2012

1:06 PM

US Structure: 5347-087 2136 W 2ND ST N **Date Insp:** 4/17/2012 **Basin:** C07B
DS Structure: 5347-086 2136 W 2ND ST **Dir Televised:** Upstream To Downstream

Pipe Information

Shape:	Round	Length Status:		Project No. : B-148
Dia/Ht:	8	Material:	VCP	Index:
Length:	31.0	Slope:	0.194	Surface:

Obs. #	VTR Counter	Distance	Location	Description	Rating	Ratings			Remain (gpm)
						Obsrvd (gpm)	Est. (gpm)	Struct Clean	
1		0.0		5347-087 US Manhole (located east of the curb line of Athenian, in grass, at edge of sidewalk)	1				
2		31.7		5347-086 DS Manhole (manhole has no bench or invert) (no elevation change in the manhole, so we can line through this and abandon manhole over CIPP)	1				



Video Inspection Master Report

12/13/2012

1:06 PM

US Structure: 5347-086 2136 W 2ND ST Date Insp: 4/17/2012 Basin: C07B
 DS Structure: 5347-085 2130 W 2ND ST Dir Televised: Upstream To Downstream

Pipe Information

Shape: Round Length Status: Project No. : B-148
 Dia/Ht: 8 Material: VCP Index:
 Length: 177.0 Slope: 0.119 Surface:

Obs. #	VTR Counter	Distance	Location	Description	Rating	Ratings			Remain (gpm)
						Obsrvd (gpm)	Est. (gpm)	Struct Clean	
1		0.0	5347-086	US Manhole	1				
		3.0		Offset Joint w/crack					
2		3.3	2136 W 2ND ST N	6" Break-In Conn	4				(televisor didn't turn and look at it)
3		15.9		Crack-Radial	1				
4		18.4		Crack-Radial	1				
5		28.6		Crack-Radial	2				
6		32.2	2136 W 2ND ST N	6" Break-In Conn	1				(sits low in the flow)
7		37.6	2130 W 2ND ST N	6" Wye Service	1				(sits low in the flow)
8		46.4		Crack-Radial	1				
9		53.9		Crack-Radial	2				
10		56.5		Crack-Radial	1				
11		69.1		Crack-Radial	2				
12		73.4		Sealed Off Wye	1				
13		74.4		Crack-Radial	2				
14		79.3		Crack-Radial	3				
15		83.5		Sealed Off Wye	1				
16		95.4		Broken Pipe	1				
17		108.7		Sealed Off Wye	1				
18		117.4		Crack-Radial	2				
19		134.7		Sealed Off Wye	1				
20		142.8		Crack-Radial	4				
21		155.9		Crack-Radial	1				
22		159.8		Sealed Off Wye	1				
23		169.6	(not sealed at the main)	Possibly Sealed Off Wye	1				
24		170.6		Crack-Radial	4				
25		176.6	5347-085	DS Manhole	1				



Video Inspection Master Report

12/13/2012

1:06 PM

US Structure: 5347-085 2130 W 2ND ST Date Insp: 4/17/2012 Basin: C07B
 DS Structure: 5347-084 2026 W 2ND ST Dir Televised: Upstream To Downstream

Pipe Information

Shape: Round Length Status: Project No. : B-148
 Dia/Ht: 8 Material: VCP Index:
 Length: 192.0 Slope: 0.099 DVD #0709

Obs. #	VTR Counter	Distance	Location	Description	Rating	Ratings			Remain (gpm)
						Obsrvd (gpm)	Est. (gpm)	Struct Clean	
1		0.0		5347-085 US Manhole	1				
2		6.9		Crack-Radial	2				
3		8.6	(not sealed at the main)	Possible Sealed Off Wye	1				
4		32.8		Sealed Off Wye	1				
5		58.9		Sealed Off Wye	1				
6		59.9		Crack-Radial	1				
7		84.3		Sealed Off Wye	1				
8		109.5		Sealed Off Wye	1				
9		134.0		Sealed Off Wye	1				
10		139.0		Broken Pipe	2				
11		140.8		Roots	1				
12		150.2	2032 W 2ND ST N	6" Wye Service	1				
13		151.2	(some pipe missing – OK to line)	Broken Pipe	5				
14		160.5		Sealed Off Wye	1				
15		166.8		Crack-Radial	2				
16		185.9		Sealed Off Wye	1				
17		193.2	5347-084	DS Manhole	1				

Video Inspection Master Report

12/13/2012

1:06 PM

US Structure: 5347-084 2026 W 2ND ST Date Insp: 4/17/2012 Basin: C07B
 DS Structure: 5347-083 248 N CLARENCE Dir Televised: Upstream To Downstream

Pipe Information

Shape: Round Length Status: Project No. : B-148
 Dia/Ht: 8 Material: VCP Index:
 Length: 212.0 Slope: 0.400 Surface:

Obs. #	VTR Counter	Distance	Location	Description	Rating	Obsrvd (gpm)	Ratings		Remain (gpm)
							Est. (gpm)	Struct Clean	
1		0.0	5347-084	US Manhole	1				
2		8.8		Crack-Radial	2				
3		18.4		Crack-Radial	2				
4		18.1		Sag begins	1				
5		20.2		Sag is barely over the camera lens					
6		26.0		Roots	2				
8		27.6		Sag ends	1				
9		41.6		Roots	1				
10		41.6		Crack-Radial	2				
11		48.9		Roots	2				
12		54.1		Roots	2				
13		59.1		Roots	2				
14		62.0		Roots	2				
15		64.3		Roots	2				
16		66.9		Roots	2				
17		68.2	256 N CLARENCE	Wye Service (roots inside)	3				
18		74.4		Roots	2				
19		77.1		Roots	2				
20		87.2		Roots	2				
21		92.2		Roots	2				
22		99.7		Roots	2				
23		102.7		Roots	1				
24		104.7		Roots	2				
25		121.9	250 N CLARENCE	Wye Service (full of roots)	5				
26		124.8		Roots	1				
27		212.0	5347-083	DS Manhole	1				

(roots at every joint and small cracks)



Video Inspection Master Report

12/13/2012

1:06 PM

US Structure: 5347-080 243 N CHARLES Date Insp: 4/17/2012 Basin: C07B
 DS Structure: 5347-077 239 N GLENN AVE Dir Televised: Upstream To Downstream

Pipe Information

Shape: Round Length Status: Project No. : B-047
 Dia/Ht: 8 Material: VCP Index:
 Length: 309.5 Slope: 0.190 Surface:

Obs. #	VTR Counter	Distance	Location	Description	Rating	Obsrvd (gpm)	Ratings		Remain (gpm)
							Est. (gpm)	Struct Clean	
1		0.0		5347-080 US Manhole	1				
2		4.4		Crack-Radial	4				
3		19.4		Roots	1				
4		21.9		Roots	1				
5		24.6		Roots	1				
6		96.7		Roots	2				
7		99.2		Roots	1				
8		102.5		Observation Hole	1				
9		113.7		Sealed Off Wye	1				
10		139.0	242 N CHARLES	Wye Service	5	(heavy roots inside the service)			
11		142.3	238 N CHARLES	Wye Service	5	(heavy roots inside the service)			
12		145.3		Crack-Horizontal	2				
13		149.1		Crack-Horizontal	1				
14		160.0		Mat. Chngs to PVC	1				
15		161.4	238 N CHARLES	PVC Break-In Conn	1				
16		162.0		Mat. Chngs back to VCP	1				
17		164.5	248 N CHARLES	Wye Service / roots inside	3				
18		182.3		Crack-Radial	2				
19		190.2	250 N CHARLES	PVC Break-In Conn	1				
20		192.4		Crack-Radial	1				
21		197.1		Mat. Chngs to PVC	1				
22		198.5	1917 W 2ND ST N	PVC Break-In Conn	1				
23		200.1		Mat. Chngs back to VCP	1				
24		203.0		Observation Hole	1				
25		212.9		Crack-Radial	2				
26		215.6		Crack-Radial	2				
27		217.1		Sealed Off Wye	1				
28		223.3		Crack-Radial	2				
29		226.0		Crack-Radial	2				
30		228.4		Crack-Radial	2				
31		233.5		Crack-Radial	3				
32		236.3		Crack-Radial	2				

Video Inspection Master Report

12/13/2012

1:06 PM

US Structure: 5347-080 243 N CHARLES Date Insp: 4/17/2012 Basin: C07B
 DS Structure: 5347-077 239 N GLENN AVE Dir Televised: Upstream To Downstream

33	242.8	1911 W 2ND ST N	Wye Service (roots inside)	4
34	244.9		Crack-Radial	3
35	246.5		Crack-Radial	2
36	249.0		Crack-Radial	3
37	251.5		Crack-Radial	1
38	254.0		Crack-Radial	3
39	258.9		Crack-Radial	2
40	266.5		Crack-Radial	2
41	270.4		Sealed Off Wye	1
42	276.8		Crack-Radial	2
43	281.8		Sag begins	5
44	281.8		Sag / submerged	5
45	284.4		Sag / emerged	1
46	284.4	(short 3' sag)	Sag ends	1
47	284.4		Crack-Radial	2
48	287.1		Crack-Radial	2
49	289.5		Crack-Radial	3
50	295.3	1907 W 2ND ST N	Extended Tap	3
		(boot-leg PVC tap / PVC has chunks missing and is rough & jagged)		
51	301.2	(brick trough)	5347-077 DS Manhole	1

(lots of cracks & roots at joints)