

**SITE 6**

N FAULKNER AVE

W FRANKLIN AVE

1207 W Franklin

875

848

825

N BUFFUM AVE

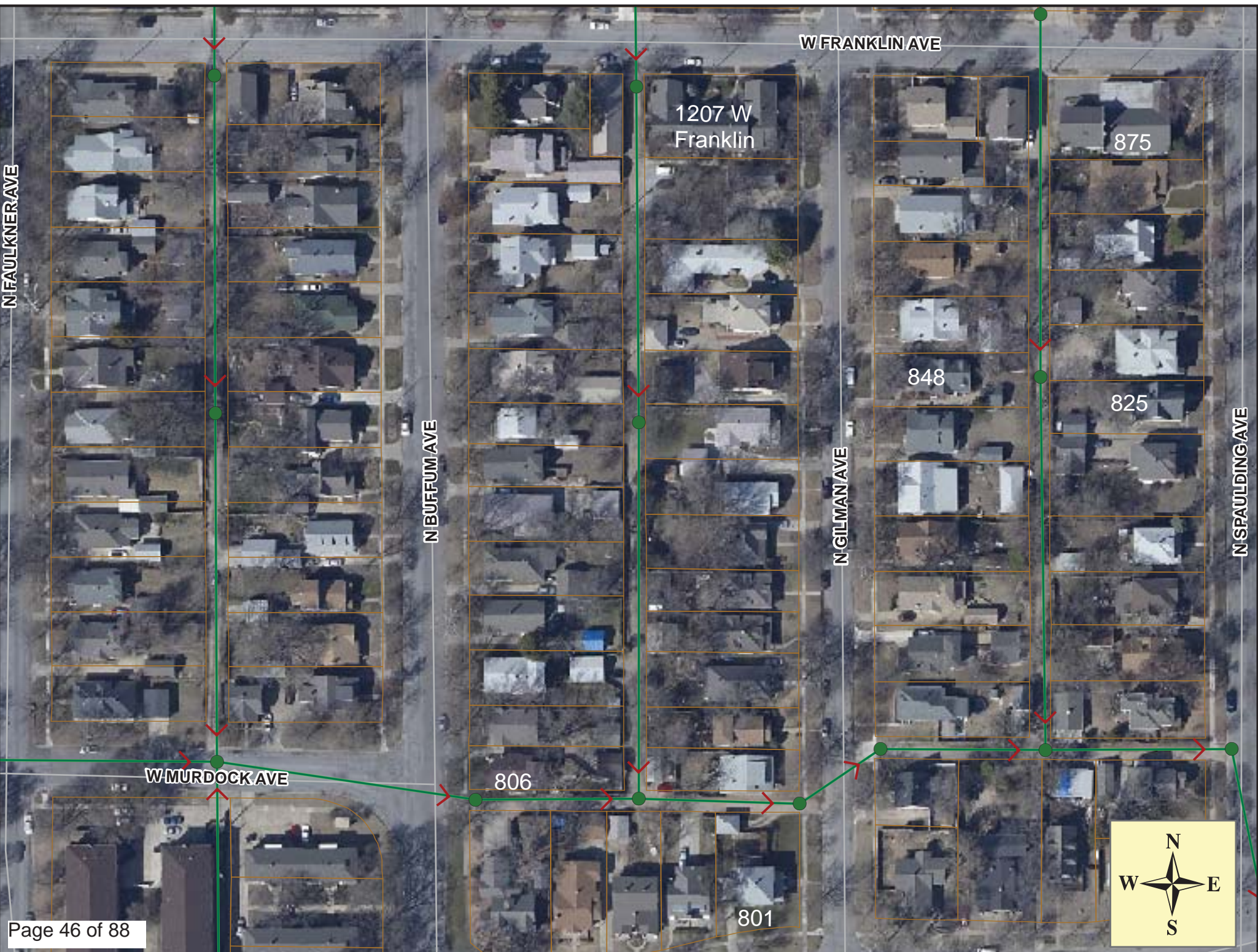
N GILMAN AVE

N SPAULDING AVE

W MURDOCK AVE

806

801





## Video Inspection Master Report

5/10/2012

12:54 PM

**US Structure: 5448-439**                      **1215 W FRANKLIN ST**                      **Date Insp: 4/10/2012**                      **Basin: C03E**  
**DS Structure: 5448-436**                      **845 N GILMAN AVE**                      **Dir Televised: Upstream To Downstream**

**Pipe Information**

**Project No. : B-215                      Dia: 8                      Material:VCP                      Length: 304.5                      Slope: 0.400                      DVD #0706**

Obs. #	VTR Counter	Distance	Location	Description	Rating	Obsrvd (gpm)	Ratings			Remain (gpm)
							Est. (gpm)	Struct	Clean	
1		0.0	5448-439	US Manhole	1					
2		6.0		Sealed Off Wye	1					
3		7.7	1207 W FRANKLIN	Wye Service	1					
4		34.5		Sealed Off Wye	1					
5		37.0	1207 W FRANKLIN	Wye Service	1					
6		43.3		Crack-Radial	1					
7		50.7		Crack-Horizontal	2					
8		58.5		Crack-Radial	2					
9		61.5	1219 W FRANKLIN	Wye Service	3					
10		62.5	872 N BUFFUM	Break-In Conn	1					
11		64.9		Sealed Off Wye	1					
12		66.1		Crack-Radial	4					
13		68.5		Crack-Radial	3					
14		73.7		Crack-Radial	2					
15		76.2		Crack-Radial	2					
16		86.6		Crack-Radial	2					
17		90.6		Sealed Off Wye	1					
18		93.2	869 N GILMAN	Wye Service	1					
19		94.2		Crack-Radial	2					
20		96.9		Crack-Radial	2					
21		99.3		Crack-Radial	2					
22		106.8		Observation Hole	3					
23		114.4		Crack-Radial	3					
24		118.4		Sealed Off Wye	1					
25		121.4		Sealed Off Wye	1					
26		122.7	868 N BUFFUM	Break-In Conn	2					
27		127.4		Crack-Radial	2					
28		134.8		Roots	1					
29		137.1		Roots	2					
30		139.7		Roots	1					
31		141.9	859 N GILMAN	Break-In Conn	1					
32		144.6		Roots	1					
33		146.5	864 N BUFFUM	Wye Service	3					
34		147.4		Roots	1					
35		149.1		Sealed Off Wye (leaking) / roots	5					

## Video Inspection Master Report

5/10/2012

12:54 PM

US Structure: 5448-439                      1215 W FRANKLIN ST                      Date Insp: 4/10/2012                      Basin: C03E  
 DS Structure: 5448-436                      845 N GILMAN AVE                      Dir Televised: Upstream To Downstream

36	155.1		Crack-Radial	2
37	160.3		Crack-Radial	1
38	162.6		Crack-Radial	2
39	167.6		Crack-Radial	3
40	170.2		Crack-Radial	3
41	174.4	856 N BUFFUM	Wye Service	5
42	176.8		Sealed Off Wye	1
43	177.8		Roots	1
44	180.7		Crack-Radial	2
45	182.8		Roots	2
46	185.3		Roots	2
47	188.1		Roots	2
48	190.5		Roots	3
49	195.8		Crack-Radial	3
50	198.2		Roots	2
51	200.8		Roots	2
52	202.3		Sealed Off Wye	1
53	204.1	851 N GILMAN	Wye Service	1
54	208.6		Crack-Radial	3
55	209.5		Observation Hole	2
56	210.9		Roots	2
57	216.3		Roots	2
58	221.3		Crack-Radial	3
59	226.3		Roots	2
60	230.8	852 N BUFFUM	Wye Service	2
61	233.1		Sealed Off Wye	1
62	234.0		Crack-Radial	2
63	241.4		Roots	1
64	244.0		Roots	1
65	249.3		Crack-Radial	3
66	251.7		Crack-Radial	2
67	258.6		Sealed Off Wye	5
68	259.2		Roots	2
69	260.2	847 N BUFFUM	Wye Service / roots	5
70	261.9		Crack-Radial	3
71	264.3		Crack-Radial	3
72	271.1	824 N BUFFUM	Break-In Conn	2
73	274.0		Roots	2
74	277.1		Roots	2
75	280.0		Crack-Radial	3
76	283.8		Sealed Off Wye / roots	5
77	286.1		Sealed Off Wye / roots	5
78	287.2		Crack-Radial	2
79	292.2		Crack-Radial	3
80	297.4		Crack-Radial	3
81	299.0	845 N GILMAN / heavy roots	Break-In Conn	5
82	304.9	5448-436	DS Manhole	2

some wye seals are broken and letting roots enter into the main



# Video Inspection Master Report

5/10/2012

12:54 PM

US Structure: 5448-436      845 N GILMAN AVE      Date Insp: 4/12/2012      Basin: C03E  
 DS Structure: 5448-433      1214 W MURDOCK ST      Dir Televised: Downstream To Upstream

**Pipe Information**

Shape: Round      Length Status:      Project No. : B-215  
 Dia/Ht: 8      Material: VCP      Index:  
 Length: 335.0      Slope: 0.400      Surface:

Obs. VTR

Obs. #	Counter	Distance	Location	Description	Rating	Ratings			
						Obsrvd (gpm)	Est. (gpm)	Struct Clean	Remain (gpm)
1		0.0		US Manhole	1				
2		6.0	824 N BUFFUM / heavy roots	Wye Service	5				
3		6.1		Crack-Radial	3				
4		7.7		Sealed Off Wye	1				
5		8.8		Crack-Radial	3				
6		16.3		Crack-Radial	2				
7		18.3		Crack-Radial	2				
8		21.0		Crack-Radial	2				
9		23.7		Crack-Radial	1				
10		28.4		Crack-Radial	2				
11		31.2		Crack-Radial	2				
12		32.5		Sealed Off Wye	1				
13		35.1		Sealed Off Wye	1				
14		36.1		Crack-Radial	3				
15		38.7		Crack-Radial	3				
16		39.4	820 N BUFFUM	Break-In Conn	1				
17		46.2		Crack-Radial	1				
18		56.3		Crack-Radial	3				
19		60.4		Sealed Off Wye	1				
20		61.4		Crack-Radial	2				
21		62.8		Sealed Off Wye	1				
22		66.2	841 N GILMAN (poor cond)	Break-In Conn	3				
23		73.9		Crack-Radial	3				
24		86.7	818 N BUFFUM	Wye Service	1				
25		88.9		Crack-Radial	2				
26		90.4		Sealed Off Wye	1				
27		112.1		Observation Hole	1				
28		117.0	816 N BUFFUM	Break-In Conn	1				
29		120.8	825 N GILMAN	Wye Service	5				
30		121.6		Crack-Radial	3				
31		141.9		Crack-Radial	1				
32		145.8		Sealed Off Wye	1				
33		148.3	819 N GILMAN	Wye Service	1				



## Video Inspection Master Report

5/10/2012

12:54 PM

**US Structure: 5448-436**                      **845 N GILMAN AVE**                      **Date Insp: 4/12/2012**                      **Basin: C03E**  
**DS Structure: 5448-433**                      **1214 W MURDOCK ST**                      **Dir Televised: Downstream To Upstream**

34	149.1		Crack-Radial	3
35	154.2		Crack-Radial	2
36	172.1		Crack-Radial	3
37	173.6	812 N BUFFUM	Wye Service	3
38	176.1		Sealed Off Wye	1
39	177.1		Crack-Radial	1
40	182.2		Crack-Radial	1
41	189.6		Crack-Radial	1
42	201.1		Sealed Off Wye	1
43	203.1	809 N GILMAN / PVC	Break-In Conn	1
44	222.1		Observation Hole	2
45	227.6	810 N BUFFUM	Wye Service	5
46	228.6	810 N BUFFUM	Wye Service	5
47	230.3		Sealed Off Wye	1
48	242.5	807 N GILMAN	Break-In Conn	1
49	256.1		Sealed Off Wye	1
50	258.7	807 N GILMAN	Wye Service	1
51	259.7		Crack-Radial	1
52	267.2		Crack-Radial	3
53	277.1		Crack-Radial	2
54	283.4	808 N BUFFUM / PVC	Break-In Conn	1
55	286.2	805 N GILMAN	Wye Service	1
56	289.5		Crack-Radial	1
57	291.9		Crack-Radial	4
58	307.0		Crack-Radial	2
59	311.0		Sealed Off Wye	1
60	312.7	803 N GILMAN	Break-In Conn	1
61	334.1	5448-433	DS Manhole	1

(this manhole is being replaced "by others" prior to the lining project)