

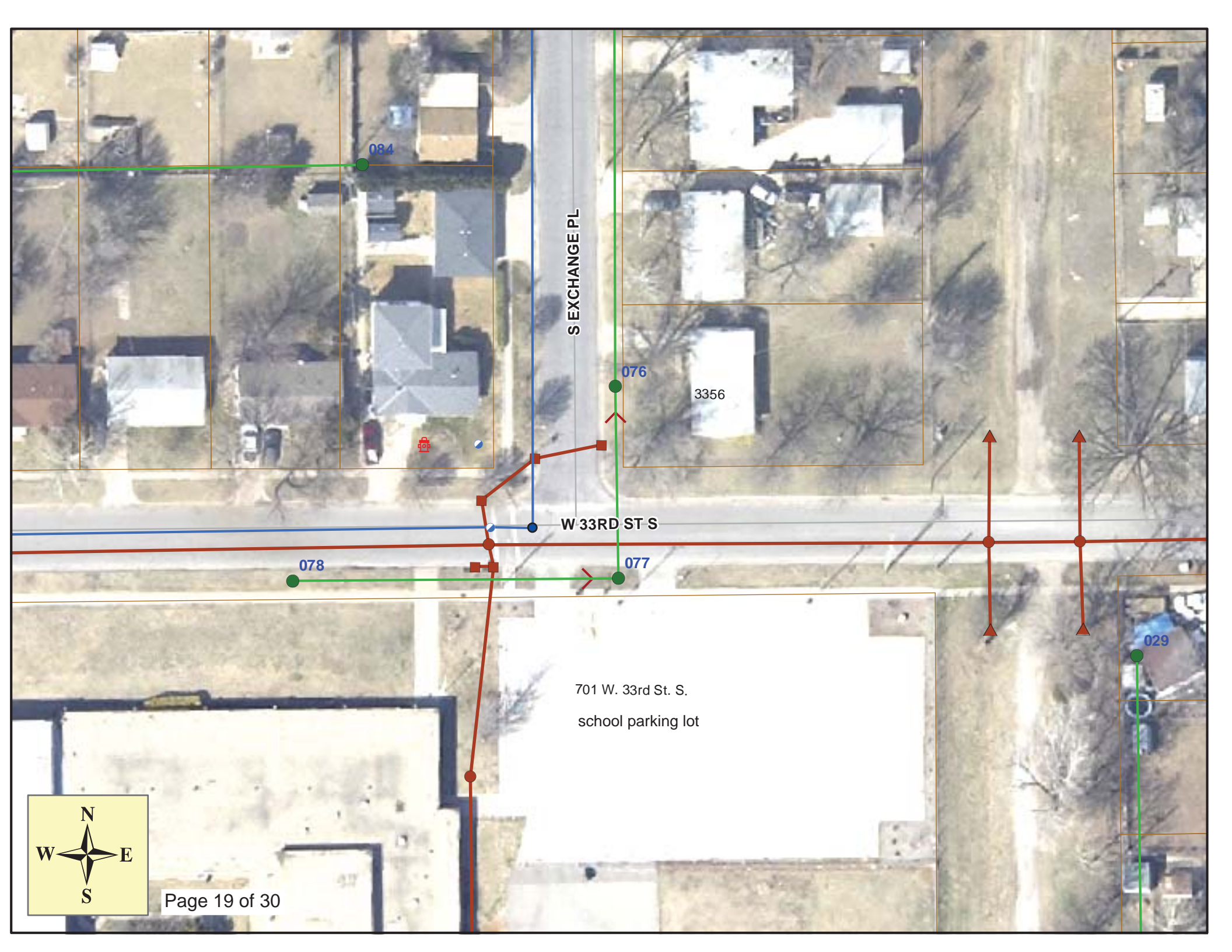
MH 5443-076  
Approx MH depth = 3.9 ft

MH 5443-077 (located in grass)  
Est. MH depth = 3.7 ft

Point Repair:  
Remove and replace 14 lf of 8" pipe  
from the north wall of MH 5443-077  
to 14 lf north of MH 5443-077  
Pavment removal and replacement  
(approx 10 lf) shall be subsidiary to the repair.

Estimated 1 Curb Inlet Protection  
Estimated 15 lf Back of Curb Protection  
Estimated 6 sy Erosion Control Mat

**SITE 3**



084

S EXCHANGE PL

076

3356

W 33RD ST S

078

077

701 W. 33rd St. S.  
school parking lot

029





# Video Inspection Master Report

9/26/2012

1:58 PM

US Structure: **5443-077**      701 W 33RD ST S      Date Insp: 8/10/2011      Basin: WC01G  
 DS Structure: **5443-076**      3356 S EXCHANGE ST      Dir Televised: Upstream To Downstream

**Pipe Information**

Shape: Round      Project No. : G-193  
 Dia/Ht: 8      Material: VCP  
 Length: 87.7      Slope: 0.205

Obs. #	VTR Counter	Distance	Location	Description	Rating	Obsrvd (gpm)	Ratings			Remain (gpm)
							Est. (gpm)	Struct	Clean	
1		0.0		5443-077 US Manhole Manhole has standing water in it. You can't see either incoming or outgoing pipe.	1	0.000	0	0	0.000	
2		2.0	Joint	Severe Offset Joint	4	0.010	20	0	0.010	
3		12.8	Joint / Offset / This may be a high point	Looks like pipe slopes downward past this joint	3	0.010	20	0	0.010	
<p>At the very least, the offset joint outside of the manhole needs to be repaired. Getting past the second offset at 12 ft will get the pipe back to better grade. Right now the upstream manhole does not drain properly. A point repair needs to be made prior to cured-in-place liner installation.</p>										
4		34.2		Roots	3	0.008	5	8	0.008	
5		37.1		Roots	3	0.008	5	8	0.008	
6		39.5		Roots	3	0.008	5	8	0.008	
7		42.8		Roots	3	0.008	5	8	0.008	
8		45.9		Roots	2	0.004	2	4	0.004	
9		48.9		Roots	3	0.008	5	8	0.008	
10		52.1		Roots	3	0.008	5	8	0.008	
11		53.6		Debris	3	0.000	0	0	0.000	
12		54.6		Roots	5	0.030	18	100	0.030	
13		<b>58.8</b>		<b>Roots</b>	<b>5</b>	<b>0.030</b>	<b>18</b>	<b>100</b>	<b>0.030</b>	

Televising stopped. The root ball is too large for the camera to pass.  
 No reverse setup was performed.

A prior tv performed on 8-14-07 shows no taps on this line. The tap for 3356 S. Exchange is located just north of MH 5443-076. -LML

Pipe crosses above a 42" RCP storm pipe in the east-bound lane of 33<sup>rd</sup> St. S.  
 There is no water main at that point in 33<sup>rd</sup> St. S.