

Remove and replace 25 lf of Concrete Approach (incl gutter) (west side)
Remove and replace 26 lf of Concrete Pavement
Remove and replace 25 lf of Concrete Approach (incl gutter) (east side)
Fill Sand, 51 lf (flushed & vibrated)

Remove 20 lf of Concrete Encasement
on 8" VCP Sanitary Sewer
Install 20 lf of Concrete Encasement
on 8" PVC Sanitary Sewer

(There is an 8" PVC water main in Glenn,
at approx. 5 ft east of the east curb line of
Glenn, located below the sanitary sewer.)

This segment is scheduled to have CIPP installed. Check with the Field Engineer to coordinate the work schedules.

MH 5347-074
Approx MH depth = 6.5 ft

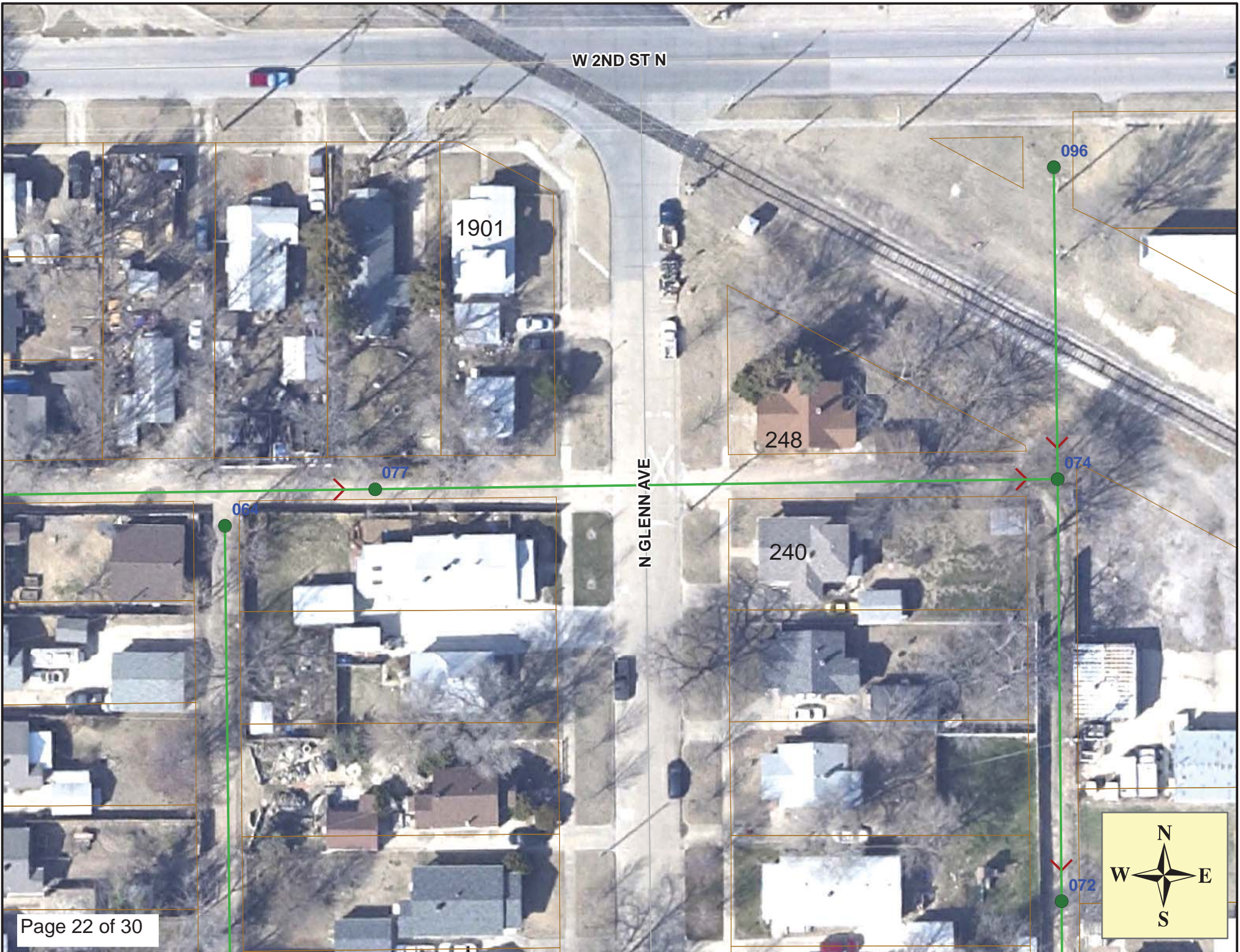
MH 5347-077
Remove Manhole
Construct Shallow Manhole
Approx MH depth = 5.3 ft

Remove and replace 301 lf of 8" pipe

Estimated 2 Service Reconnections (4")
Restoration of unpaved alleys shall be subsidiary to Site Restoration

SITE 4







Video Inspection Master Report

12/27/2012

1:02 PM

US Structure: 5347-077 239 N GLENN AVE Date Insp: 4/18/2012 Basin: C07B
 DS Structure: 5347-074 248 N GLENN AVE Dir Televised: Upstream To Downstream

Pipe Information

Project No. : B-046 Dia: 8 Material: VCP Length: 301.0

Comments: CONNECTIONS 49,204 FOR ROOTS. SAGS.CRACKS THROUGH OUT LINE SEGMENT.

Obs. #	VTR Counter	Distance	Location	Description	Rating	Obsrvd (gpm)	Ratings		Remain (gpm)
							Est. (gpm)	Struct Clean	
1		0.0	5347-077 (in unpaved alley)	US Manhole	1				
2		13.1		Crack-Radial	2				
3		20.6		Crack-Radial	2				
4		24.3		Sealed Off Wye	1				
5		28.2		Crack-Radial	4				
6		43.4		Crack-Radial	2				
7		45.9		Crack-Radial	2				
8		49.2	1901 W 2ND ST N	Wye Service / ball of roots	5				
9		51.1		Crack-Radial	1				
10		53.5		Broken Pipe / Invert	3				
11		61.4		Crack-Radial	3				
12		64.0		Crack-Radial	2				
13		66.4		Crack-Radial	2				
14		68.9		Crack-Radial	1				
15		74.0		Crack-Radial	2				
16		84.2		Crack-Radial	2				
17		89.6		Crack-Radial	3				
18		92.4		Crack-Radial	2				
19		102.9		Observation Hole	1				
20		118.3		Crack-Radial	4				
21		121.2		Crack-Radial	2				
22		126.5		Crack-Radial	2				
23		129.4		Crack-Radial	3				
24		131.8		Crack-Radial	2				
25		140.0		Crack-Radial	3				
26		147.6		Crack-Radial	2				
27		155.1		Crack-Radial	2				
28		165.6		Crack-Radial	2				
29		167.9		Crack-Radial	2				
30		177.0		Sealed Off Wye	1				
31		190.6		Crack-Radial	3				
32		193.0		Crack-Radial	2				
33		200.7		Observation Hole	1				
34		204.4	248 N GLENN	Wye Service / roots inside	4				
35		205.6		Crack-Radial	3				
36		210.8		Crack-Radial	3				
37		220.8		Crack-Radial	3				



Video Inspection Master Report

12/27/2012

1:02 PM

US Structure: 5347-077 **239 N GLENN AVE** **Date Insp: 4/18/2012** **Basin: C07B**
DS Structure: 5347-074 **248 N GLENN AVE** **Dir Televised: Upstream To Downstream**

38	228.3	Crack-Radial	2
39	232.4	Sealed Off Wye	1
40	257.7	Sealed Off Wye	1
41	277.2	Crack-Radial	2
42	283.9	Sealed Off Wye	1
43	290.3	Crack-Radial	2
44	292.7	Crack-Radial	2
56	299.0 5347-074	DS Manhole	1

(had to use a cleaner from 0 ft to 208 ft to be able to see the pipe, due to sags)

Sag Records:

45	9.9	Sag begins	4
47	30.0	Sag ends	1
49	53.3	Scaling	1
50	160.6	Sag begins	1
51	165.1	Sag	4
52	179.6	Sag ends	1
54	201.9	Sag begins	4
55	299.0	Sag ends at manhole	4

Camera did not get into the downstream manhole