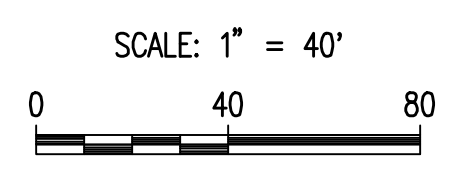
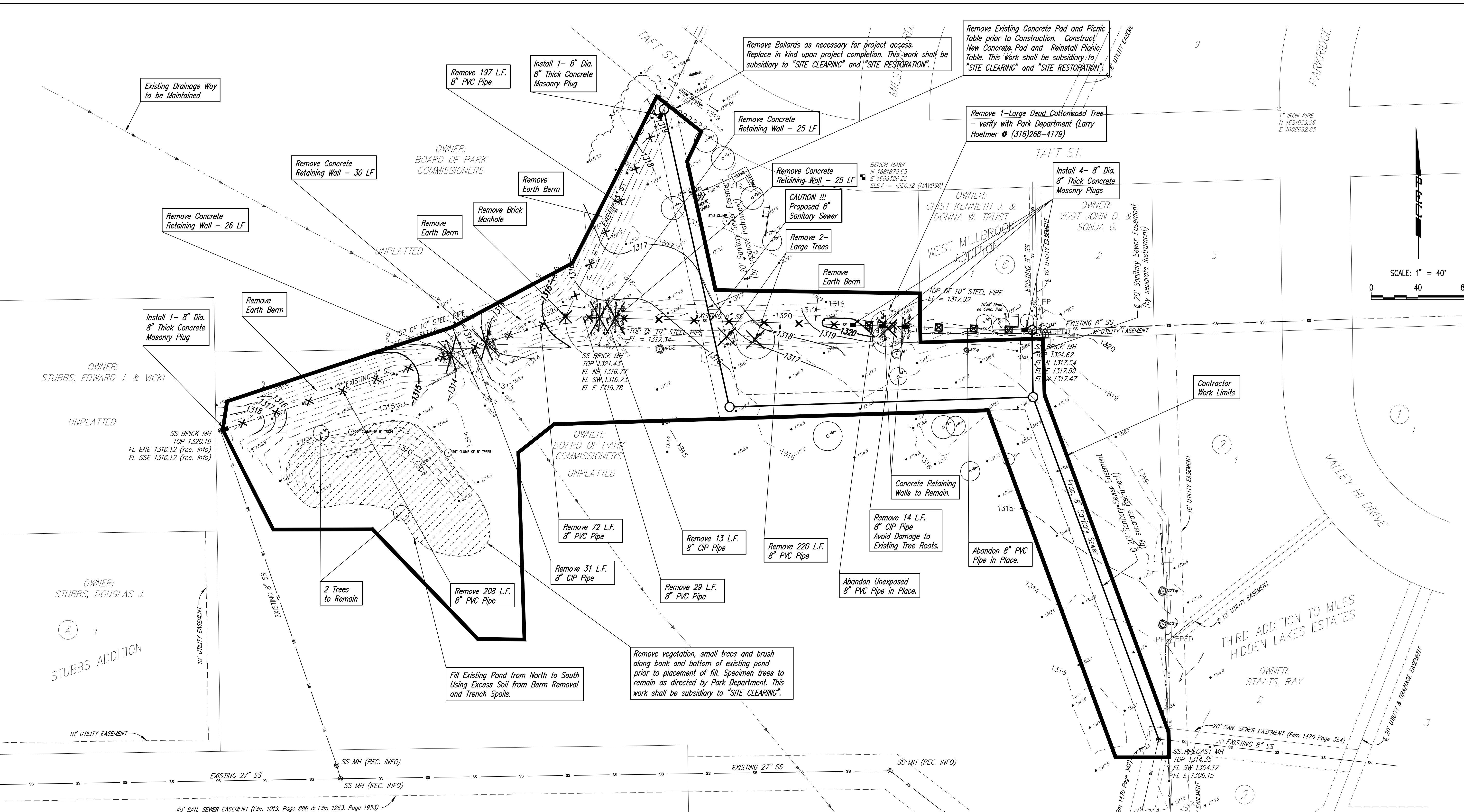


Sowed 03-19-2013 8:22:13 AM by BEJ  
 Plot Scale 1:40 03-19-2013 8:30:36 AM by BEJ  
 03/20/2013 12:10:26 10-04-Site Demo and Grading Plan



Note: Contractor shall confine his work activities within the work limits shown on the plan above. Contractor shall mark work limits in the field in the presence of Park Department personnel. Contact Larry Hoetmer, Wichita Park Department at (316)268-4179.

EARTHWORK SUMMARY		
EXCAVATION (Berm Removal)	2035 C.Y.	
FILL, COMPACTED-90% DENSITY (Pond Fill)	1768 C.Y.	
ESTIMATED QUANTITIES - NO SHRINKAGE FACTORS USED		

- SITE LEGEND**
- SS X - Denotes Sanitary Sewer Manhole to be Removed
  - SS ■ - Denotes Sanitary Sewer to be Plugged
  - SS □ - Denotes Sanitary Sewer to be Abandoned in Place
  - SS X - Denotes Sanitary Sewer to be Removed
  - X - Denotes Retaining Wall to be Removed
  - X - Denotes Tree to be Removed

- SURVEY LEGEND**
- SS ..... SANITARY SEWER (CITY OF WICHITA)
  - OHE ..... OVERHEAD ELECTRIC (WESTAR)
  - ..... BOLLARD
  - BPed ..... TELEPHONE PEDESTAL
  - PP ..... POWER POLE (WESTAR)
  - ..... GUY ANCHOR
  - ⊙SS MH ..... SANITARY SEWER MANHOLE (CITY OF WICHITA)
  - ..... LOCATION OF SPOT ELEVATION
  - ..... DECIDUOUS TREE (CALIPER INDICATED)
  - ..... CONIFER TREE (CALIPER INDICATED)
  - ..... BENCH MARK

No.	Revision	By	Date
RELOCATION OF EXISTING SANITARY SEWER LINES LOCATED IN WEST MILLBROOK PARK <b>SITE DEMOLITION AND GRADING PLAN</b> GARY JANZEN, P.E. - CITY ENGINEER CITY OF WICHITA PROJECT NO. 468-84851 PROFESSIONAL ENGINEERING CONSULTANTS, P.A. 303 SOUTH TOPEKA WICHITA, KS 67202 316-262-2691 www.pec1.com			
Designed by	CSB	Job No.	35-12610-0042
Drawn by	JAN	Date	JANUARY 2013
			SHEET 4 OF 11