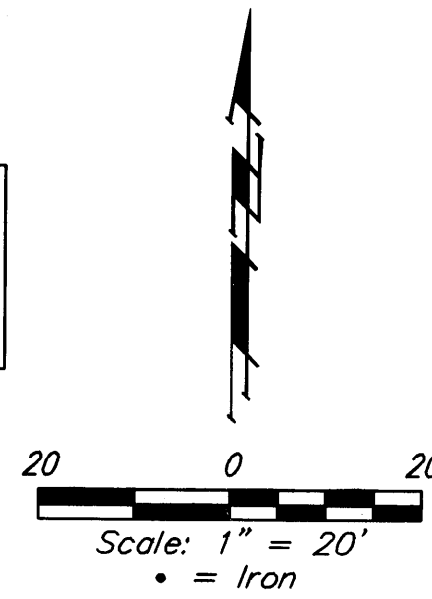
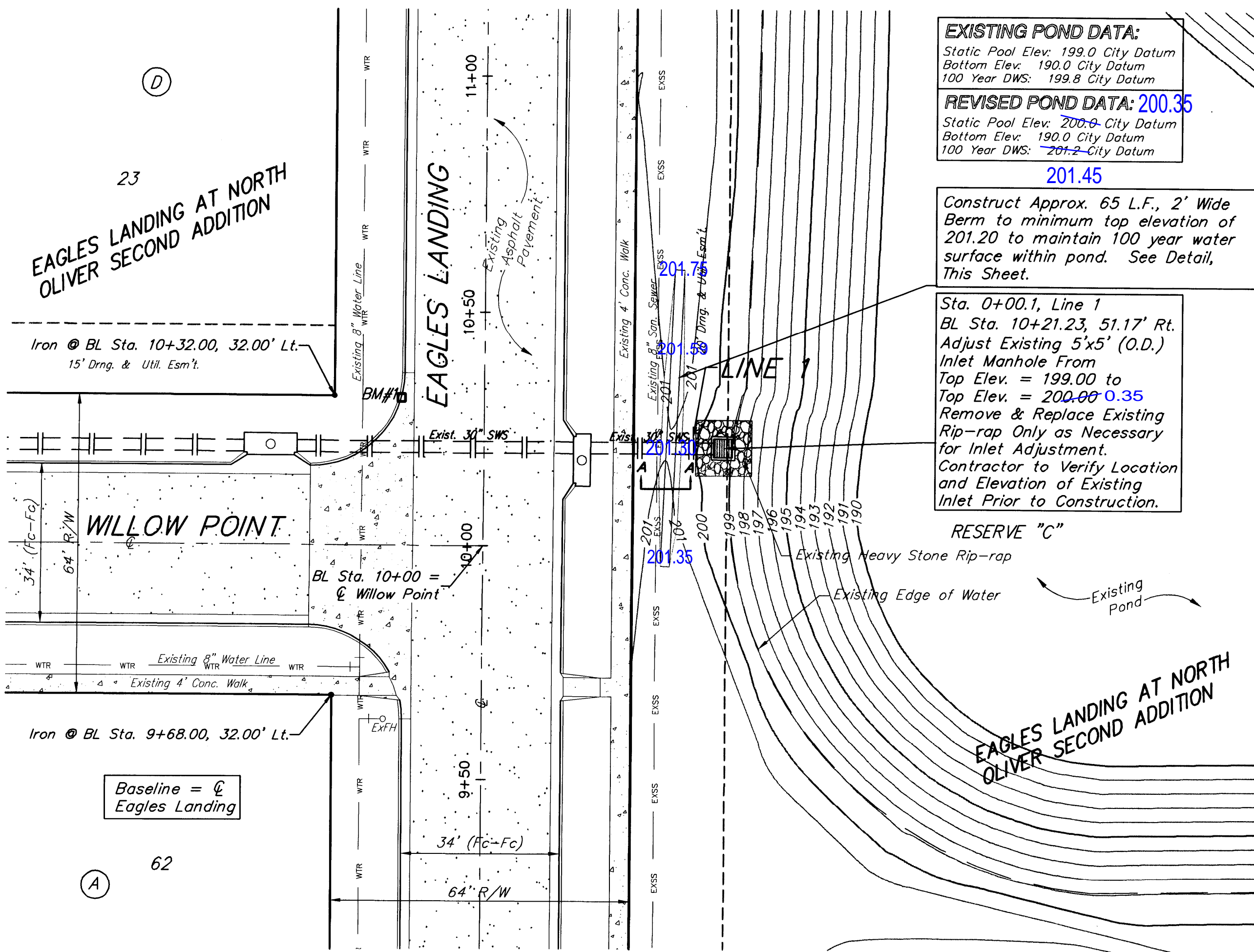


Reserve "C" Pond Outfall Modification to serve **EAGLES LANDING AT NORTH OLIVER SECOND ADDITION**

CITY OF WICHITA, KANSAS

Gary Janzen, P.E. Interim City Engineer
Private Project: 99 PPD (607861)
MAY 2012

AS BUILT PLANS
Contractor: Holcomb Concrete
Inspector: Don Eddingfield, Baughman Co.
pdf's by: KEK, 2/18/13



Benchmarks

- "□" Cut in Top of curb, north end of north curb return, Willow Point and Eagles Landing, Eagles Landing at North Oliver Second Addition, Wichita, Sedgwick County, Kansas.
Elev. = 1387.40 NGVD (200.00 City Datum)
- Oliver and 45th St. N. - Top of Brass Plate on SW Corner of R.C.B.C. East of Intersection.
Elev. = 1398.88 NGVD (211.48 City Datum)
- 60d Nail in H.L.P., 33' S. of the NW Corner of Gov't. Lot 1 in the NE 1/4 of Sec. 26, TWP. 26-S-R-1-E of the 6th P.M.
Elev. = 1377.19 NGVD (189.79 City Datum)

Legal Description

Reserve "C", Eagles Landing at North Oliver Second Addition, Wichita, Sedgwick County, Kansas

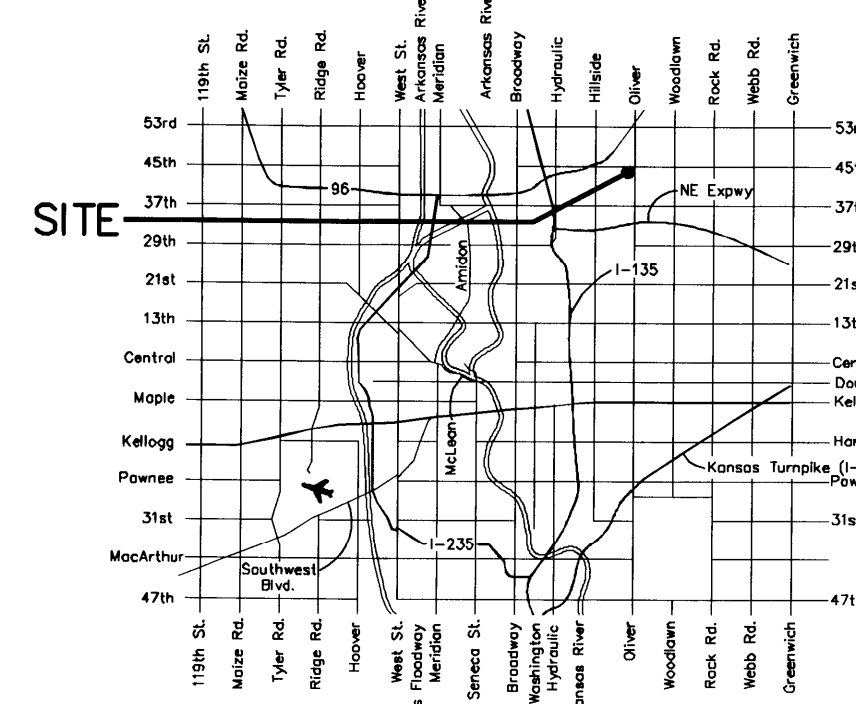
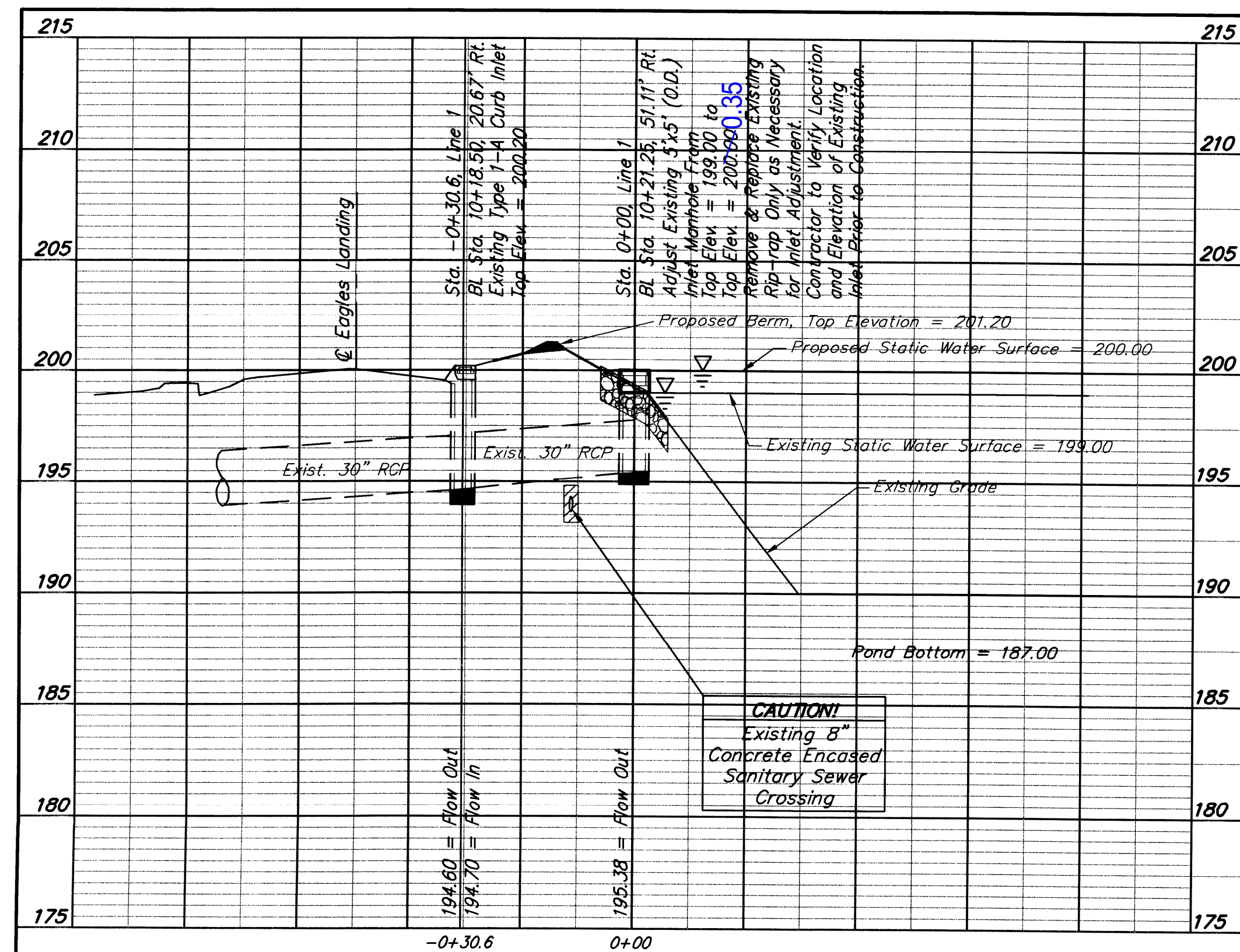
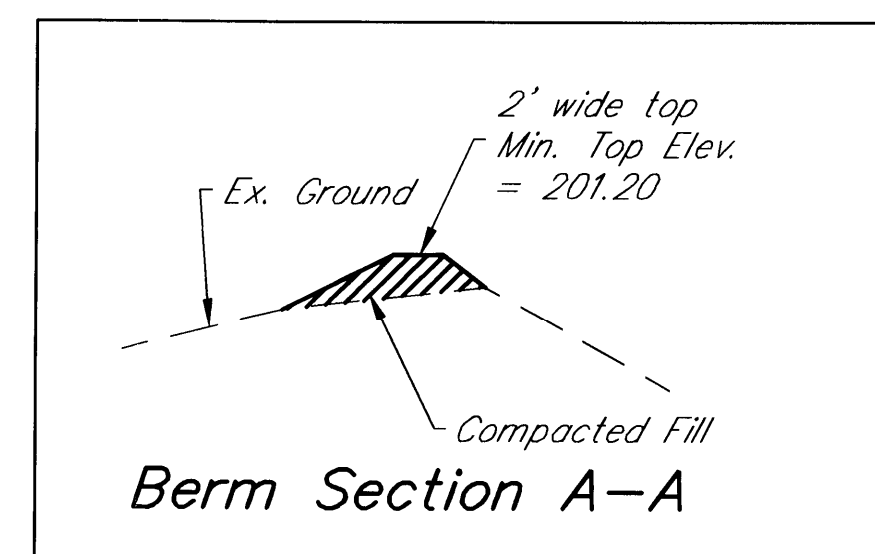
Index

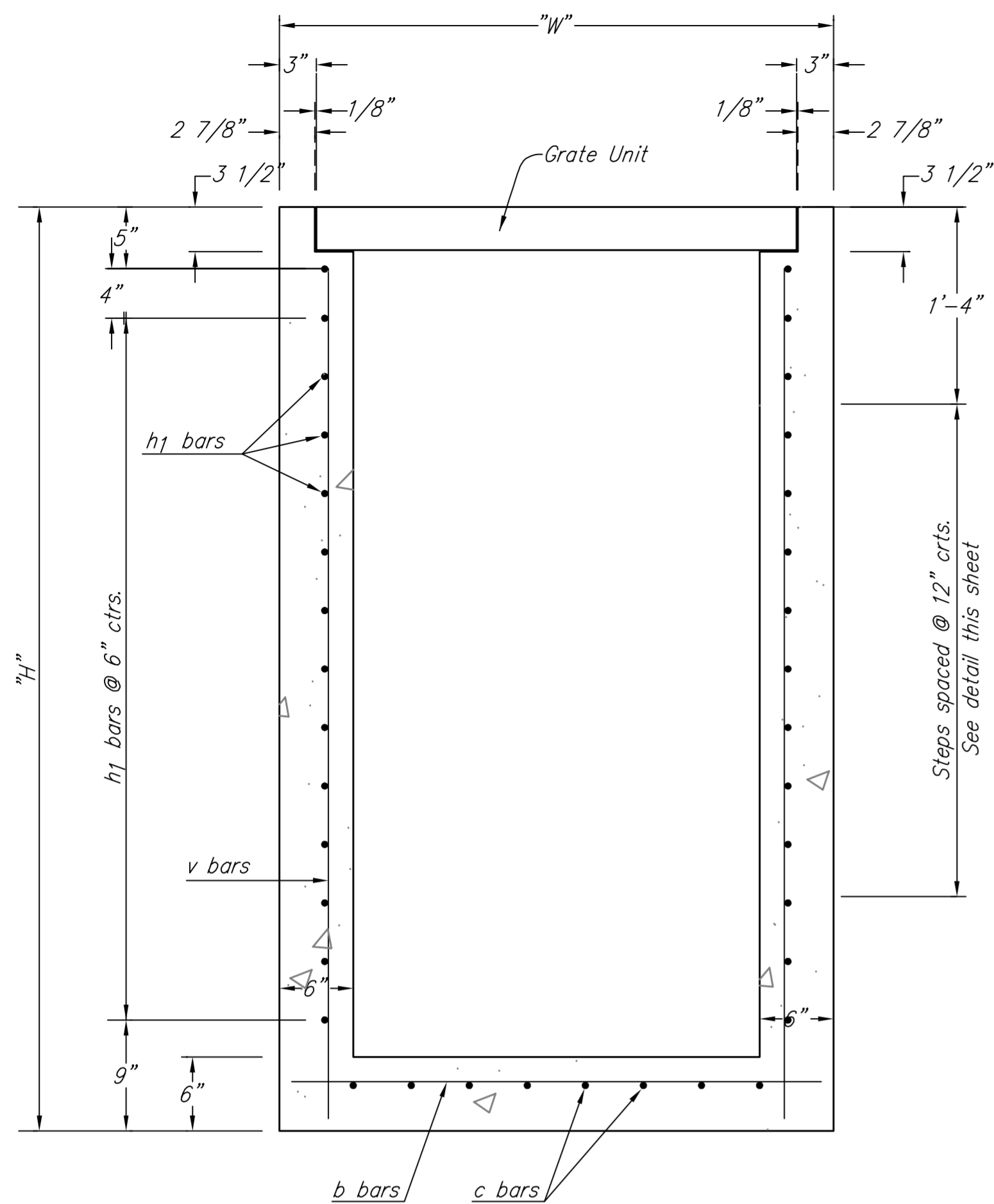
Plan/Profile/Title Sheet	1
Inlet Manhole Detail Sheet	2

GENERAL NOTES:

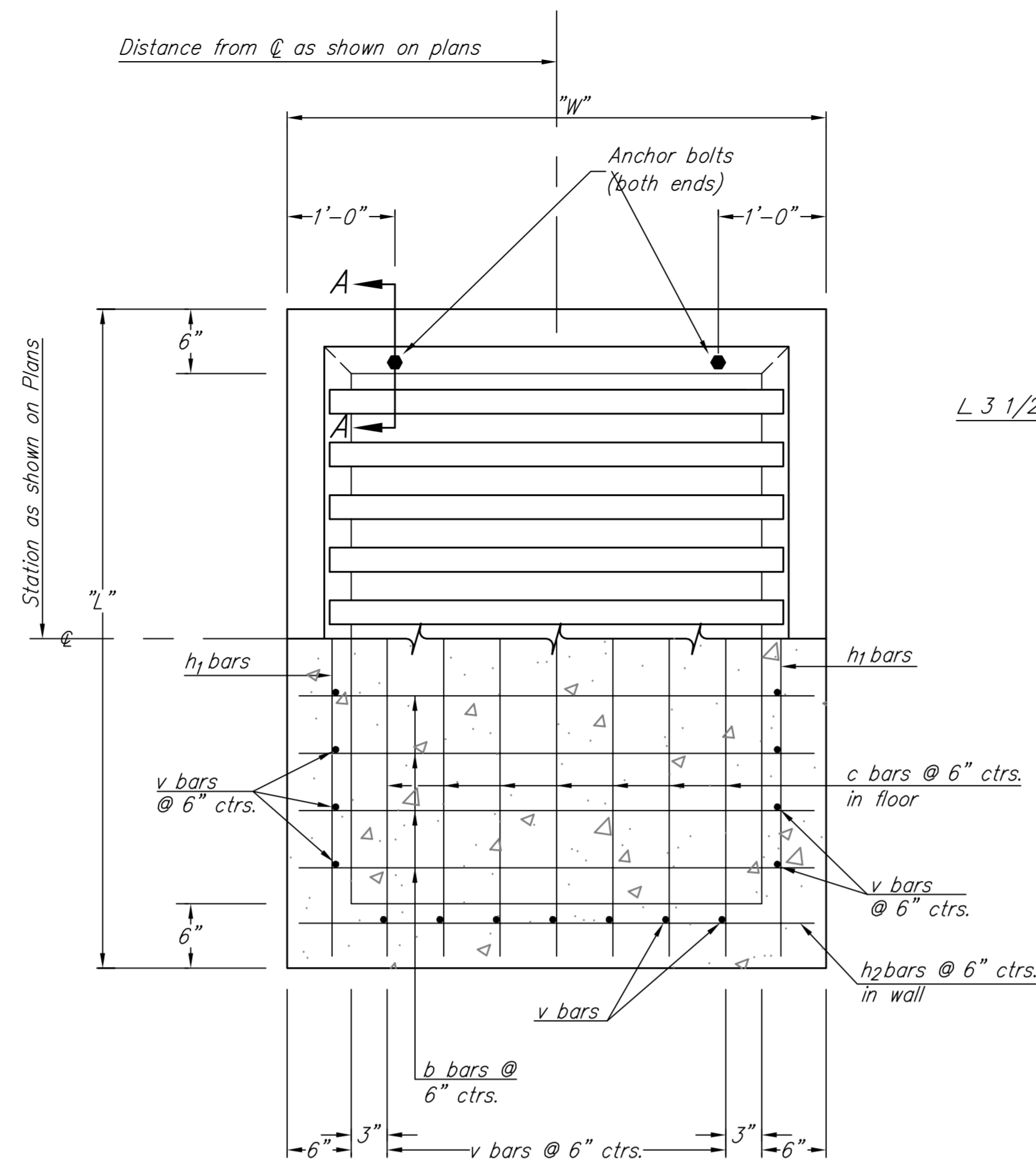
- Contractor will be required to provide notice to utility companies a minimum of forty-eight (48) hours prior to any excavation, as follows:
Kansas One-Call 687-2470
The Contractor must notify the following in case of an emergency:
Cox Communications 262-4270
Kansas Gas Service 1-888-482-4950
Westar Energy 383-8650
Aquila Energy 1-800-303-0357
AT&T 268-2245
City of Wichita Water Dept. 268-4563
City of Wichita Sewer Maint. 268-4024
City of Wichita Storm Sewer Maint. 268-4090
City of Wichita Traffic Maint. 268-4034
Conoco Phillips Pipeline Co. 1-877-267-2290
Southern Star Pipeline Co. 529-6600
Kinder-Morgan Pipeline Co. 1-888-844-5658
- Utility service lines, poles, valve boxes, meters, and etcetera are to be adjusted as necessary by others prior to construction unless the plans specifically call for their adjustment by the Contractor or unless the plans specifically identify a utility to be adjusted by its owner during construction. Existing utilities and their location, as shown on the plans, represent the best information obtainable for design. The Contractor will be required to work around existing utilities within the right-of-way which do not conflict with proposed construction.
- Rubble from the removal of miscellaneous structures and excess excavation which is to be wasted shall be disposed of on sites to be provided by the Contractor. These sites shall be approved by the Engineer as to suitability, appearance and site location. Locations, in the opinion of the Engineer, that will leave an unsightly appearance will not be approved. All disposal sites must be approved by the Kansas Department of Health and Environment. Material either stockpiled or disposed of in a flood plain would require a Kansas State Board of Agriculture permit. Any material dumped in waters of the United States or wetlands is subject to U.S. Corps. of Engineers permitting regulations. Any material buried or stockpiled beyond approved construction limits would require additional archaeological investigations unless buried in a previously approved borrow location.
- Contractor shall not start work on the project until the project inspector is assigned to the project and is present on the site. Contractor shall not start on the project until all necessary bonds and permits have been obtained. Bonds may include but are not limited to Statutory, Performance & Maintenance Any work done without inspection will be required to be uncovered for inspection.
- The Contractor shall be responsible for preserving property irons. The Contractor will be required to re-establish any property irons which are damaged or destroyed by his construction operations. Such irons shall be re-established by a licensed Land Surveyor in accordance with state laws.
- All areas disturbed by construction shall be seeded with Kansas Premium Fescue Blend at a rate of 8 lb./1000 Sq. Ft., fertilized with a 18-20-6 ratio at a rate of 4 lb./1000 Sq. Ft., and mulched with Prairie Hay at a rate of 92 lb./1000 Sq. Ft. Mulch shall be "patted" with forks or punched into soil to reduce loss due to wind. Sodding of disturbed areas is allowed as an equal to project seeding.
- Sprinkler heads and underground lines are present in this area. Coordinate location of sprinkler heads with Eagles Landing HOA. Any removal or damage to existing sprinkler system shall be coordinated with Eagles Landing HOA and repaired/replaced at contractor's expense.
- Stage/Storage/Discharge Table.

Stage (ft)	Elev (ft)	Storage (cuft)	Discharge (cfs)
0	200	0	0
1	201	77,019	45.27
2	202	84,896	54.38

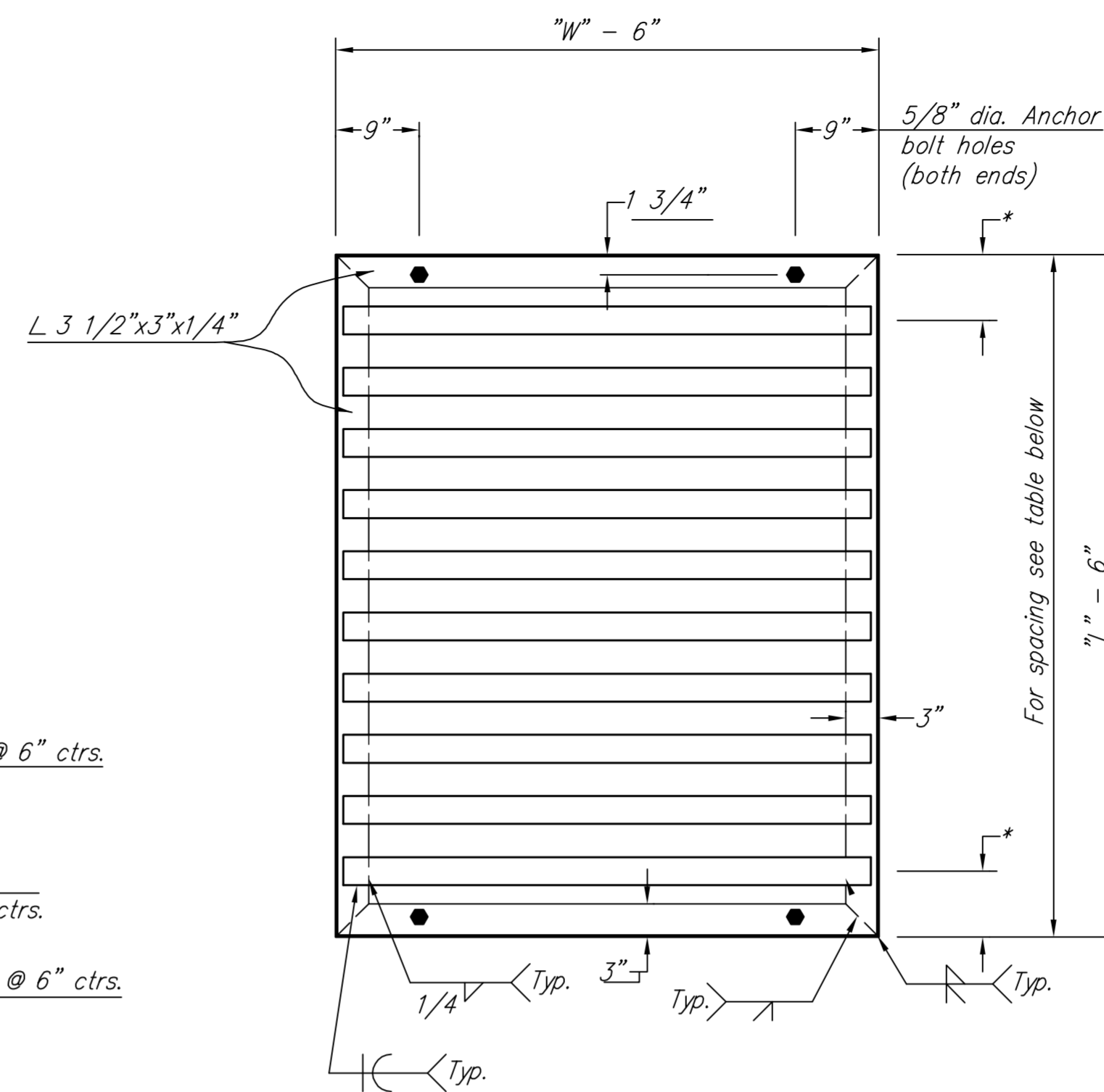




SECTION



PLAN AND SECTION



GRATE UNIT DETAILS

GENERAL NOTE

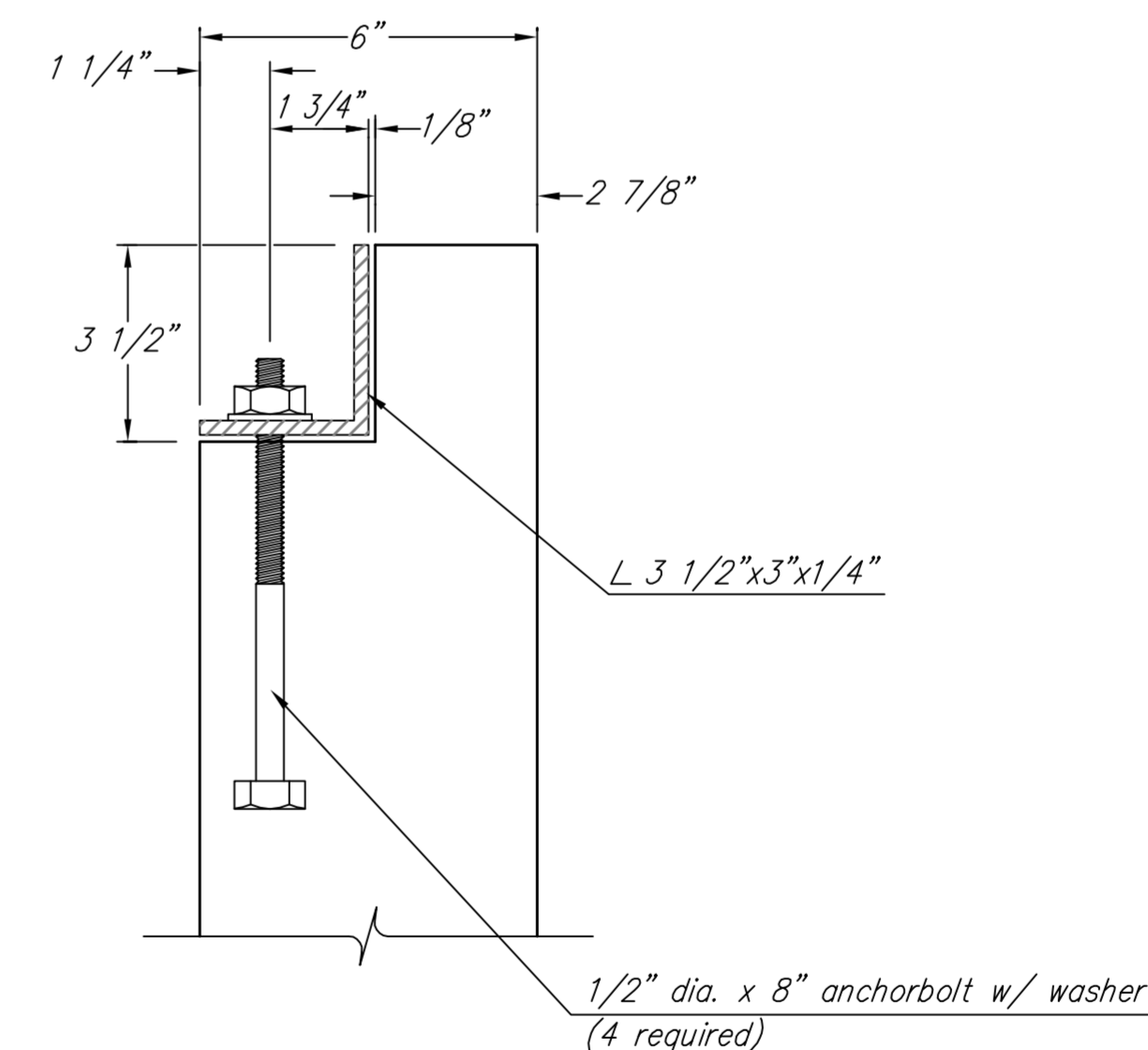
Use Class A Concrete throughout. All exposed edges shall be finished with an edging tool.
 At the Contractors option, Class A Concrete (AE) or mix used in concrete pavement may be used throughout.
 In general, pipes will enter and leave the manhole at various positions. Where possible bend bars around pipes.
 Floor of inlet shall be shaped as shown in various "Examples" on Reinforced Concrete Manhole Standard No. 633. Concrete used for shaping shall be unreinforced Class "A" Concrete or concrete pavement mix. No addition in concrete quantities shall be made for shaping floor of inlets.
 Manhole steps, where used, shall be placed to afford easy access to top of shaped invert.
 No deductions in concrete quantities shall be made for pipe openings.
 All bars are #4 @ 6" spacing and shall have a minimum clearance of 1 1/2" unless otherwise noted on the plans.
 The top of the manhole shall be sloped slightly to approximately fit the ground line or other conditions as directed by the Engineer.
 Steps shall be installed on all storm sewer inlets when specified in the plans or when "H" is equal or greater than six feet. Steps shall comply with KDOT Standard Specification.
 The grate shall be fabricated from standard or commercial grade structural steel and black steel pipe. The unit shall be hot dipped, galvanized after fabrication, in accordance with ASTM A123 except the weight of coating shall average not less than 2.0 ounces per square foot of actual surface and no individual test shall show less than 1.8 ounces of coating per square foot of actual surface area.
 ** Unless otherwise provided for, quantities shown are for information only.

BILL OF MATERIALS FOR INLET-MANHOLE (SPECIAL)

"L"	"W"	"H"	"L"	"W"	"H"	"L"	"W"	"H"	"L"	"W"	"H"	"L"	"W"	"H"	"L"	"W"	"H"	"L"	"W"	"H"	"L"	"W"	"H"
Bar	No.	Size	Length	Bar	No.	Size	Length	Bar	No.	Size	Length	Bar	No.	Size	Length	Bar	No.	Size	Length	Bar	No.	Size	Length
v		#4		v		#4		v		#4		v		#4		v		#4		v		#4	
c		#4		c		#4		c		#4		c		#4		c		#4		c		#4	
b		#4		b		#4		b		#4		b		#4		b		#4		b		#4	
h1		#4		h1		#4		h1		#4		h1		#4		h1		#4		h1		#4	
h2		#4		h2		#4		h2		#4		h2		#4		h2		#4		h2		#4	
Class "A" Conc.	Cu.Yd.	Class "A" Conc.	Cu.Yd.	Class "A" Conc.	Cu.Yd.	Class "A" Conc.	Cu.Yd.	Class "A" Conc.	Cu.Yd.	Class "A" Conc.	Cu.Yd.	Class "A" Conc.	Cu.Yd.	Class "A" Conc.	Cu.Yd.	Class "A" Conc.	Cu.Yd.	Class "A" Conc.	Cu.Yd.	Class "A" Conc.	Cu.Yd.	Class "A" Conc.	Cu.Yd.
Reinf. Steel	Lbs.	Reinf. Steel	Lbs.	Reinf. Steel	Lbs.	Reinf. Steel	Lbs.	Reinf. Steel	Lbs.	Reinf. Steel	Lbs.	Reinf. Steel	Lbs.	Reinf. Steel	Lbs.	Reinf. Steel	Lbs.	Reinf. Steel	Lbs.	Reinf. Steel	Lbs.	Reinf. Steel	Lbs.
Struct. Steel	Lbs.	Struct. Steel	Lbs.	Struct. Steel	Lbs.	Struct. Steel	Lbs.	Struct. Steel	Lbs.	Struct. Steel	Lbs.	Struct. Steel	Lbs.	Struct. Steel	Lbs.	Struct. Steel	Lbs.	Struct. Steel	Lbs.	Struct. Steel	Lbs.	Struct. Steel	Lbs.
Class III Excav.	Cu.Yd.	Class III Excav.	Cu.Yd.	Class III Excav.	Cu.Yd.	Class III Excav.	Cu.Yd.	Class III Excav.	Cu.Yd.	Class III Excav.	Cu.Yd.	Class III Excav.	Cu.Yd.	Class III Excav.	Cu.Yd.	Class III Excav.	Cu.Yd.	Class III Excav.	Cu.Yd.	Class III Excav.	Cu.Yd.	Class III Excav.	Cu.Yd.

BILL OF MATERIALS FOR INLET-MANHOLE (SPECIAL)

"L"	"W"	"H"	"L"	"W"	"H"	"L"	"W"	"H"	"L"	"W"	"H"	"L"	"W"	"H"	"L"	"W"	"H"	"L"	"W"	"H"	"L"	"W"	"H"
Bar	No.	Size	Length	Bar	No.	Size	Length	Bar	No.	Size	Length	Bar	No.	Size	Length	Bar	No.	Size	Length	Bar	No.	Size	Length
v		#4		v		#4		v		#4		v		#4		v		#4		v		#4	
c		#4		c		#4		c		#4		c		#4		c		#4		c		#4	
b		#4		b		#4		b		#4		b		#4		b		#4		b		#4	
h1		#4		h1		#4		h1		#4		h1		#4		h1		#4		h1		#4	
h2		#4		h2		#4		h2		#4		h2		#4		h2		#4		h2		#4	
Class "A" Conc.	Cu.Yd.	Class "A" Conc.	Cu.Yd.	Class "A" Conc.	Cu.Yd.	Class "A" Conc.	Cu.Yd.	Class "A" Conc.	Cu.Yd.	Class "A" Conc.	Cu.Yd.	Class "A" Conc.	Cu.Yd.	Class "A" Conc.	Cu.Yd.	Class "A" Conc.	Cu.Yd.	Class "A" Conc.	Cu.Yd.	Class "A" Conc.	Cu.Yd.	Class "A" Conc.	Cu.Yd.
Reinf. Steel	Lbs.	Reinf. Steel	Lbs.	Reinf. Steel	Lbs.	Reinf. Steel	Lbs.	Reinf. Steel	Lbs.	Reinf. Steel	Lbs.	Reinf. Steel	Lbs.	Reinf. Steel	Lbs.	Reinf. Steel	Lbs.	Reinf. Steel	Lbs.	Reinf. Steel	Lbs.	Reinf. Steel	Lbs.
Struct. Steel	Lbs.	Struct. Steel	Lbs.	Struct. Steel	Lbs.	Struct. Steel	Lbs.	Struct. Steel	Lbs.	Struct. Steel	Lbs.	Struct. Steel	Lbs.	Struct. Steel	Lbs.	Struct. Steel	Lbs.	Struct. Steel	Lbs.	Struct. Steel	Lbs.	Struct. Steel	Lbs.
Class III Excav.	Cu.Yd.	Class III Excav.	Cu.Yd.	Class III Excav.	Cu.Yd.	Class III Excav.	Cu.Yd.	Class III Excav.	Cu.Yd.	Class III Excav.	Cu.Yd.	Class III Excav.	Cu.Yd.	Class III Excav.	Cu.Yd.	Class III Excav.	Cu.Yd.	Class III Excav.	Cu.Yd.	Class III Excav.	Cu.Yd.	Class III Excav.	Cu.Yd.



SECTION A-A

PIPE DIMENSIONS AND SPACING

L x W	No. of Bars	Dia. x Length x Spacing	*
5'-6" x 5'-6"	9	2 1/2"Ø x 4'-11" pipes @ 6" ctrs.	6"
6'-0" x 6'-0"	10	2 1/2"Ø x 5'-5" pipes @ 6" ctrs.	6"
7'-6" x 7'-6"	13	2 1/2"Ø x 6'-9" pipes @ 6" ctrs.	6"

Baughman St. Andrew's Place 3rd Addition - Phas
 Inlet Manhole
 Storm Water Sewer Improvements

ENGINEERING | SURVEYING | PLANNING | LANDSCAPE ARCHITECTURE

PROJECT NUMBER: _____ DESIGN: Staff DRAWN: DMV
 APPROVED: _____ DATE: 1/07

REVISIONS: 3/01/95 Baughman Company Revision
 SCALE: None
 SHEET: 2 OF 2

Eng:\Details\Inletmhdwg