

## GENERAL NOTES:

- Contractor will be required to provide notice to utility companies a minimum of seventy-two (72) hours prior to any excavation, as follows:

Kansas One-Call 687-2470

The Contractor must notify the following in case of an emergency:

Cox Communications 262-4270  
 Kansas Gas Service 1-888-482-4950  
 Westar Energy 383-8650  
 Black Hills Energy 1-800-303-0357  
 AT&T 268-2245  
 City of Wichita Water Dept. 268-4563  
 City of Wichita Sewer Maint. 268-4024  
 City of Wichita Storm Sewer Maint. 268-4090  
 City of Wichita Traffic Maint. 268-4034  
 Conoco Phillips Pipeline Co. 1-877-267-2290  
 Southern Star Pipeline Co. 529-6600  
 Kinder-Morgan Pipeline Co. 1-888-844-5658

- Utility service lines, poles, valve boxes, meters, and etcetera are to be adjusted as necessary by others prior to construction unless the plans specifically call for their adjustment by the Contractor or unless the plans specifically identify a utility to be adjusted by its owner during construction. Existing utilities and their location, as shown on the plans, represent the best information obtainable for design. The Contractor will be required to work around existing utilities within the right-of-way which do not conflict with proposed construction.
- Rubble from the removal of miscellaneous structures and excess excavation which is to be wasted shall be disposed of on sites to be provided by the Contractor. These sites shall be approved by the Engineer as to suitability, appearance and site location. Locations, in the opinion of the Engineer, that will leave an unsightly appearance will not be approved. All disposal sites must be approved by the Kansas Department of Health and Environment. Material either stockpiled or disposed of in a flood plain would require a Kansas State Board of Agriculture permit. Any material dumped in waters of the United States or wetlands is subject to U.S. Corps. of Engineers permitting regulations. Any material buried or stockpiled beyond approved construction limits would require additional archaeological investigations unless buried in a previously approved borrow location.
- Trees and shrubs in public right-of-way which are in direct conflict with proposed new construction shall be removed by the Contractor with the Engineer's approval. Trees and shrubs which are not in direct conflict with proposed new construction shall be saved and protected from damage.
- The Contractor shall give all property owners and/or tenants of developed property abutting the construction of this project a minimum of ten (10) days notice prior to start of construction.
- The Contractor shall be responsible for preserving property irons. The Contractor will be required to re-establish any property irons which are damaged or destroyed by his construction operations. Such irons shall be re-established by a licensed land surveyor in accordance with state laws.
- All existing and proposed erosion control measures including silt fencing, erosion control mat, straw bales, inlet barriers, and const. entrance shall be maintained throughout construction by the contractor and until project is accepted by the City of Wichita. The on-site engineer shall complete weekly reports on the status of erosion control measures. The contractor shall be required to comply with maintenance and/or replacement of erosion control measures as determined by the on-site engineer until project is accepted by City of Wichita. Maintenance and/or replacement of erosion control measures to be paid by L.S. bid item "Site Restoration".
- All areas disturbed during construction that will not be under proposed pavement shall be seeded, mulched, and fertilized as follows (Permanent Seeding):

Seed: Kansas Premium Fescue Blend: 8 lbs./1000 sq. ft.  
 Mulch: Prairie Hay: 2 tons/acre  
 Fertilizer: 12-24-12: 850 lbs./acre

All costs associated with seeding, mulching, and fertilizing shall be included in bid item "Seeding". All seeding operations shall conform to City of Wichita Standard Specifications.

## STORM WATER SEWER IMPROVEMENTS to serve

# MEL HAMBELTON 2ND ADDITION

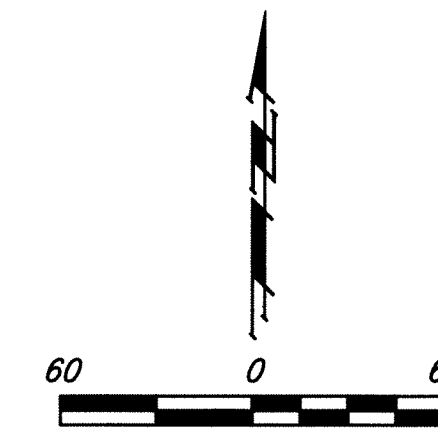
## CITY OF WICHITA, KANSAS

Gary Janzen, P.E. City Engineer  
 Project Number  
 0138 PPD (607861)

## Benchmarks

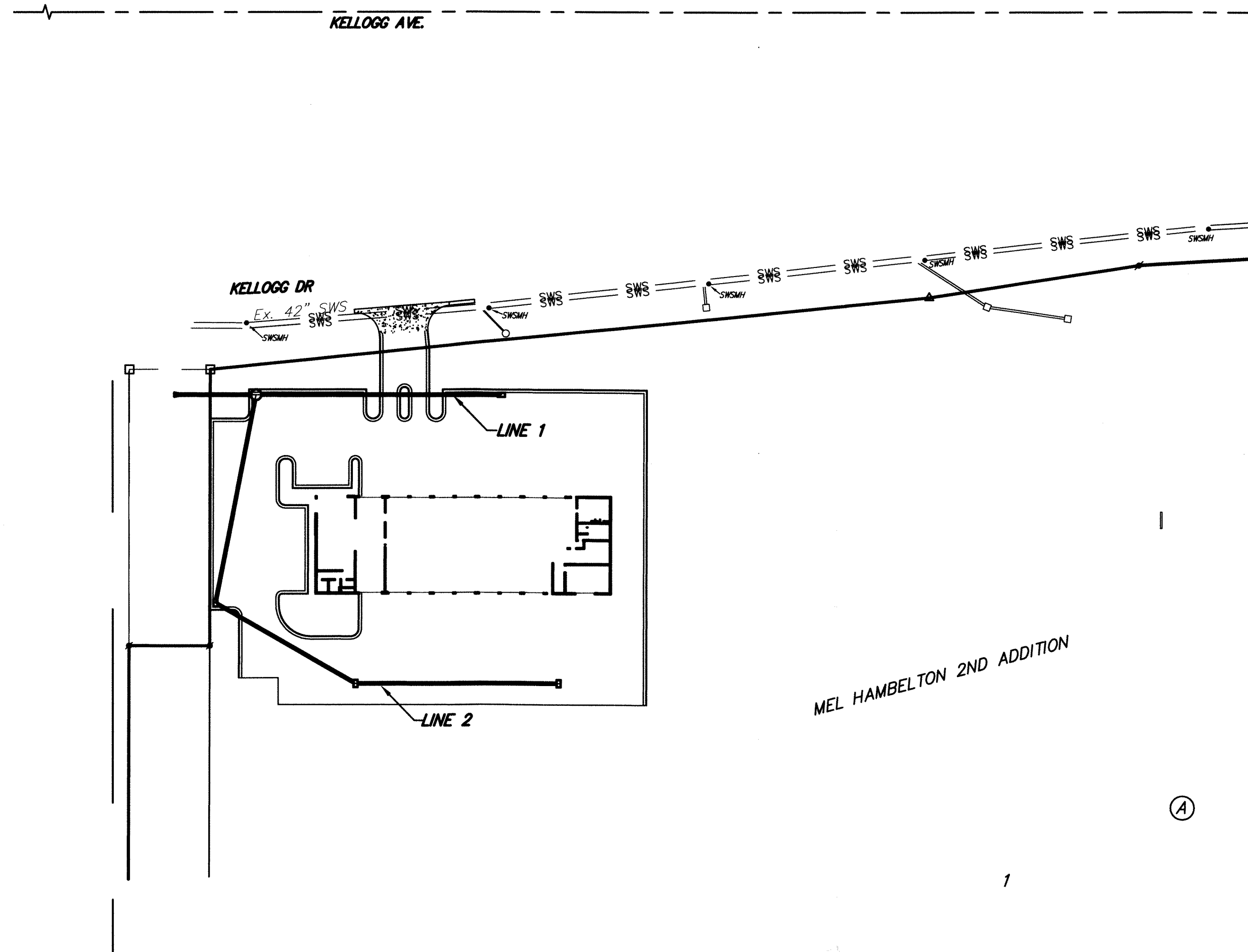
BM#1: City of Wichita Benchmark Disc on west end of RCRC Headwall, 17.7' N. & 35.9' W. of the NW corner of Lot 1, Block A, Mel Hambleton 2nd Addition. Elev. = 1328.33 NAVD88

BM#2: Railroad Spike in Power Pole, 38.8' W. & 1.0' S. of the first deflection corner south of the NE corner of Lot 1, Block A, Mel Hambleton 2nd Addition. Elev. = 1330.80 NAVD88



## Sheet Index

Title Sheet	1
SWS Line 1	2
SWS Line 2	3
Drop Inlet Detail	4
Hydroworks Water Quality Unit Detail	5
Miscellaneous Detail	6
Erosion Control Plan	7
Erosion Control BMP Details	8
Copy of Plat	9



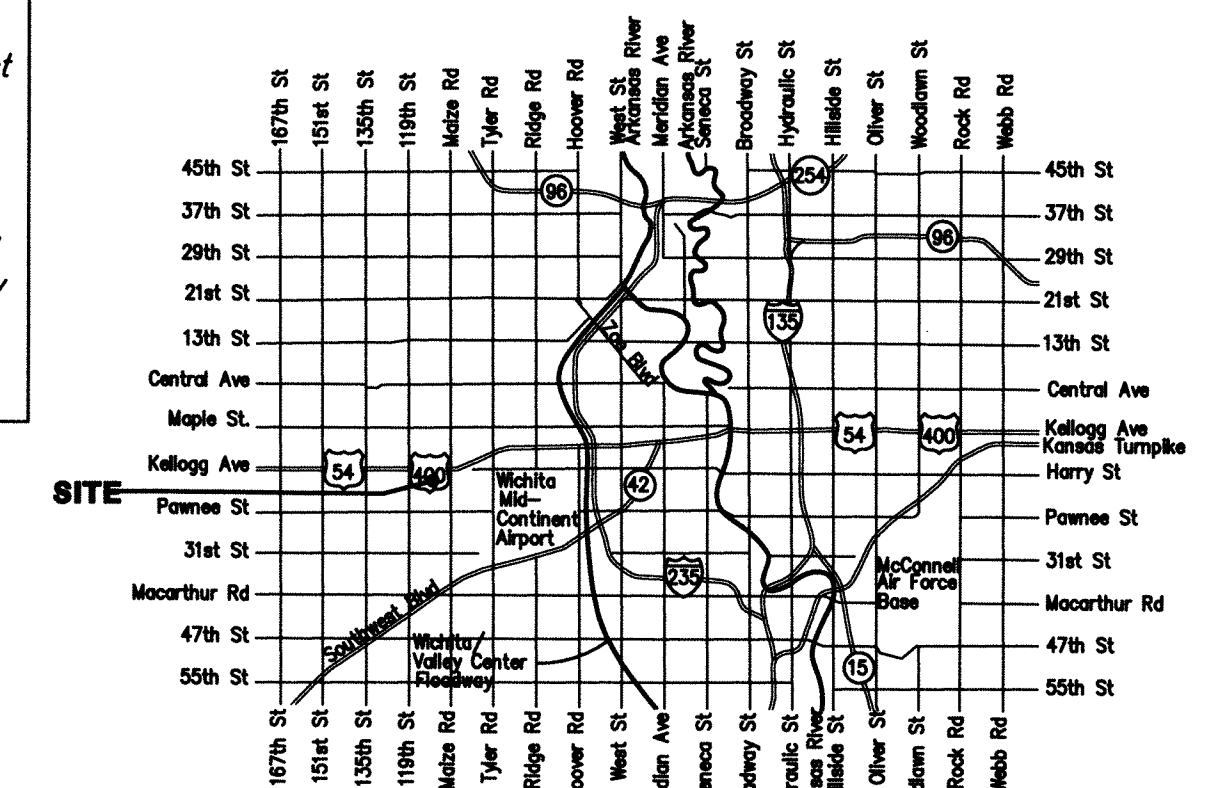
APPROVED AS NOTED  
 BY CITY ENGINEER OF WICHITA

Engineering *[Signature]* 3-19-13

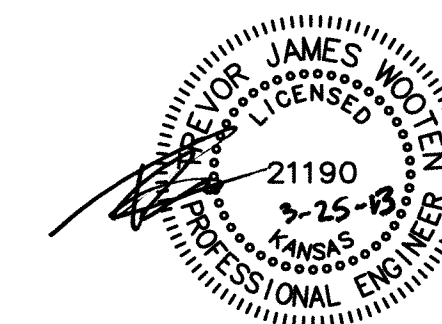
Stormwater *[Signature]* 3-19-13

NOTE TO CONTRACTORS

Installation, inspection and testing for this project is to be provided by a Licensed Consulting Engineering Firm under contract with the Owner/Developer. Said inspection to be in accordance with the City of Wichita standard construction engineering practices and certified by a Licensed Professional Engineer. No work shall be performed in dedicated easements or public right-of-way by the Contractor without such inspection nor shall any work be commenced without written authorization by the City Engineer. All Construction and Materials shall comply with the City of Wichita Specifications and Standards (on file and available in the City Engineer's Office).

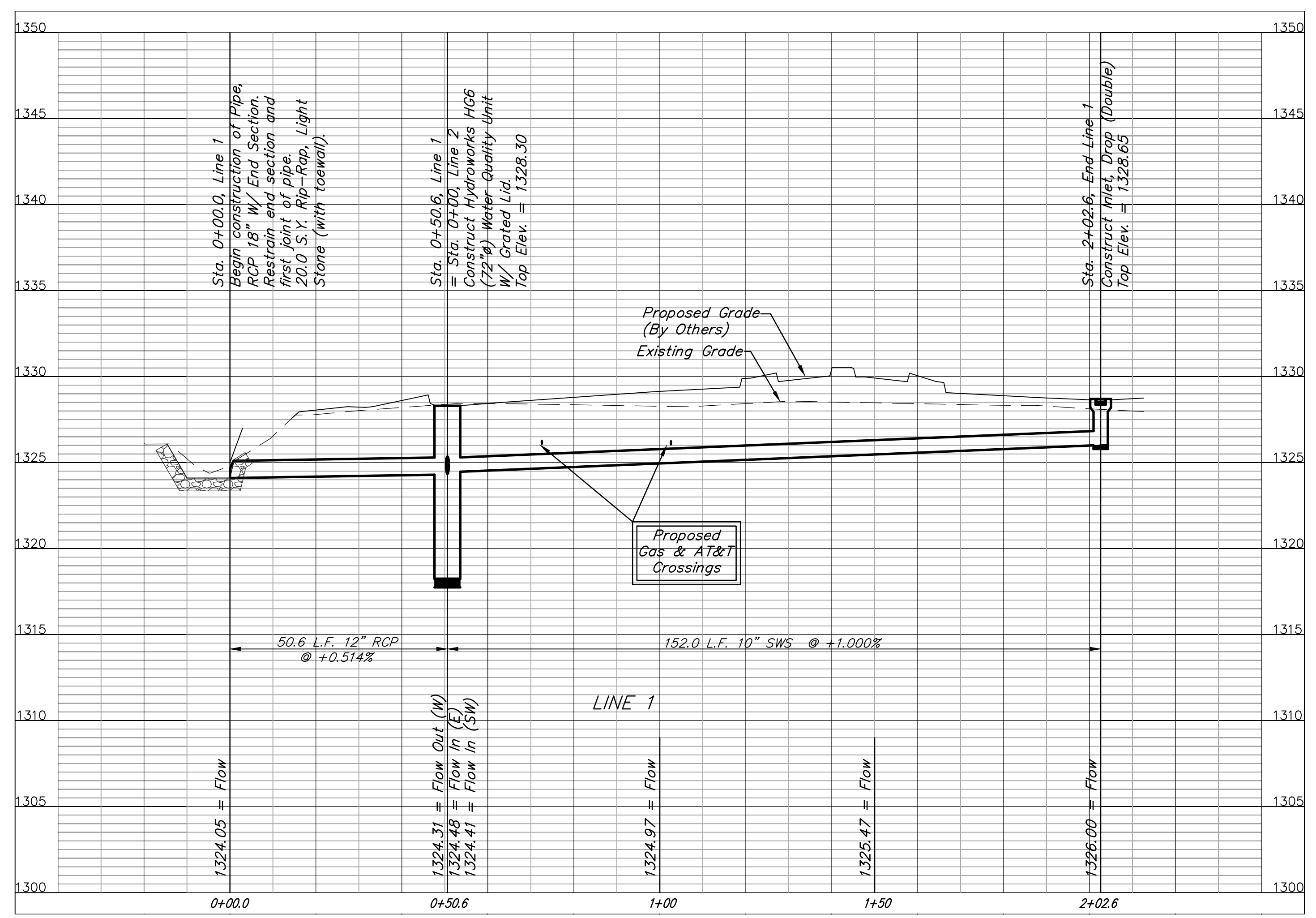
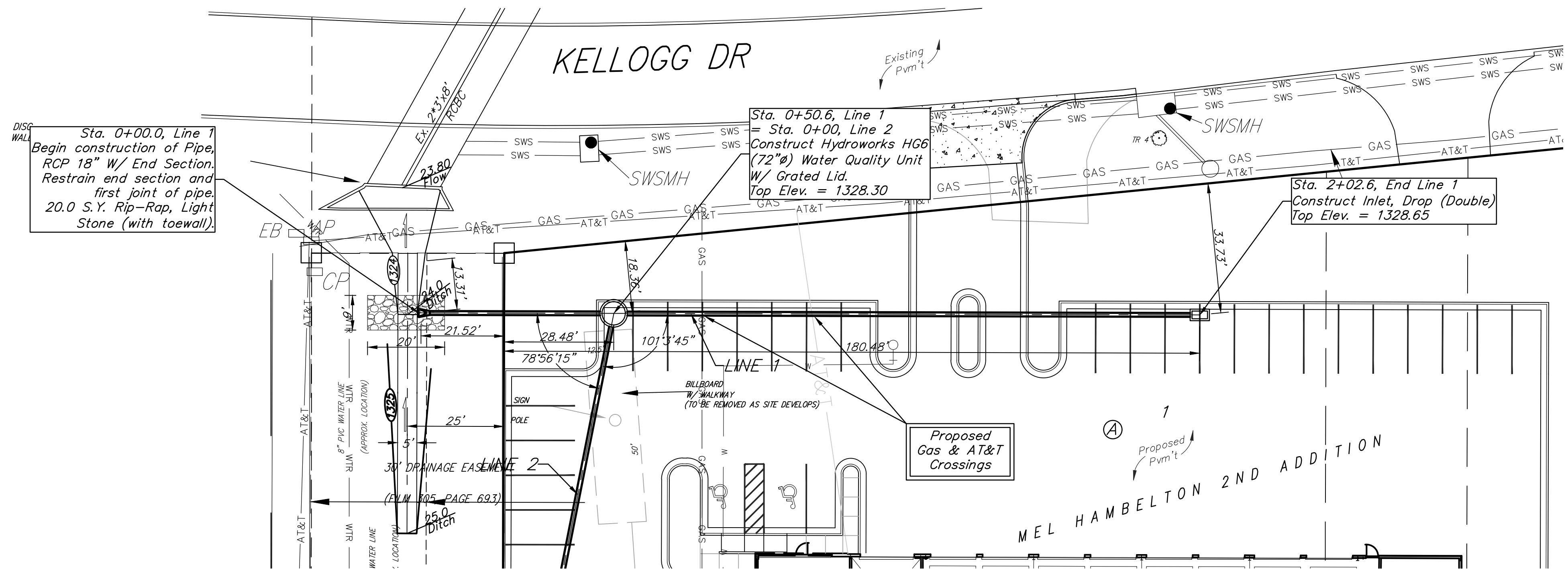


## Vicinity Map



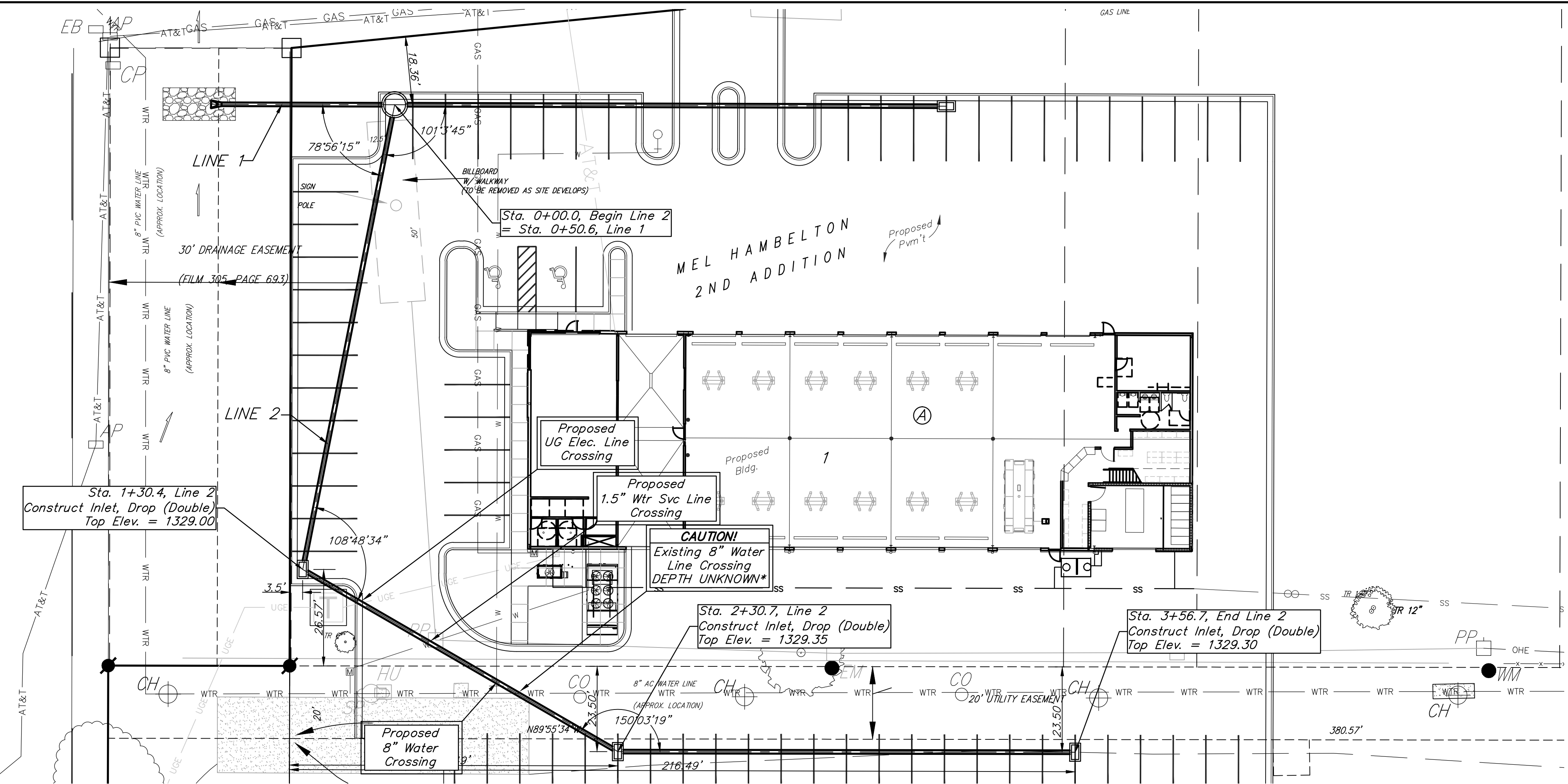
Baughman Company, P.A. 315 Ellis St. Wichita, KS 67211 P 316-262-7271 F 316-262-0149  
 ENGINEERING | SURVEYING | PLANNING | LANDSCAPE ARCHITECTURE

**BENCHMARKS:**  
 BM#1: City of Wichita Benchmark Disc on west end of RCBC Headwall, 17.7' N. & 35.9' W. of the NW corner of Lot 1, Block A, Mel Hambleton 2nd Addition. Elev. = 1328.33 NAVD88  
 BM#2: Railroad Spike in Power Pole, 38.8' W. & 1.0' S. of the first deflection corner south of the NE corner of Lot 1, Block A, Mel Hambleton 2nd Addition. Elev. = 1330.80 NAVD88

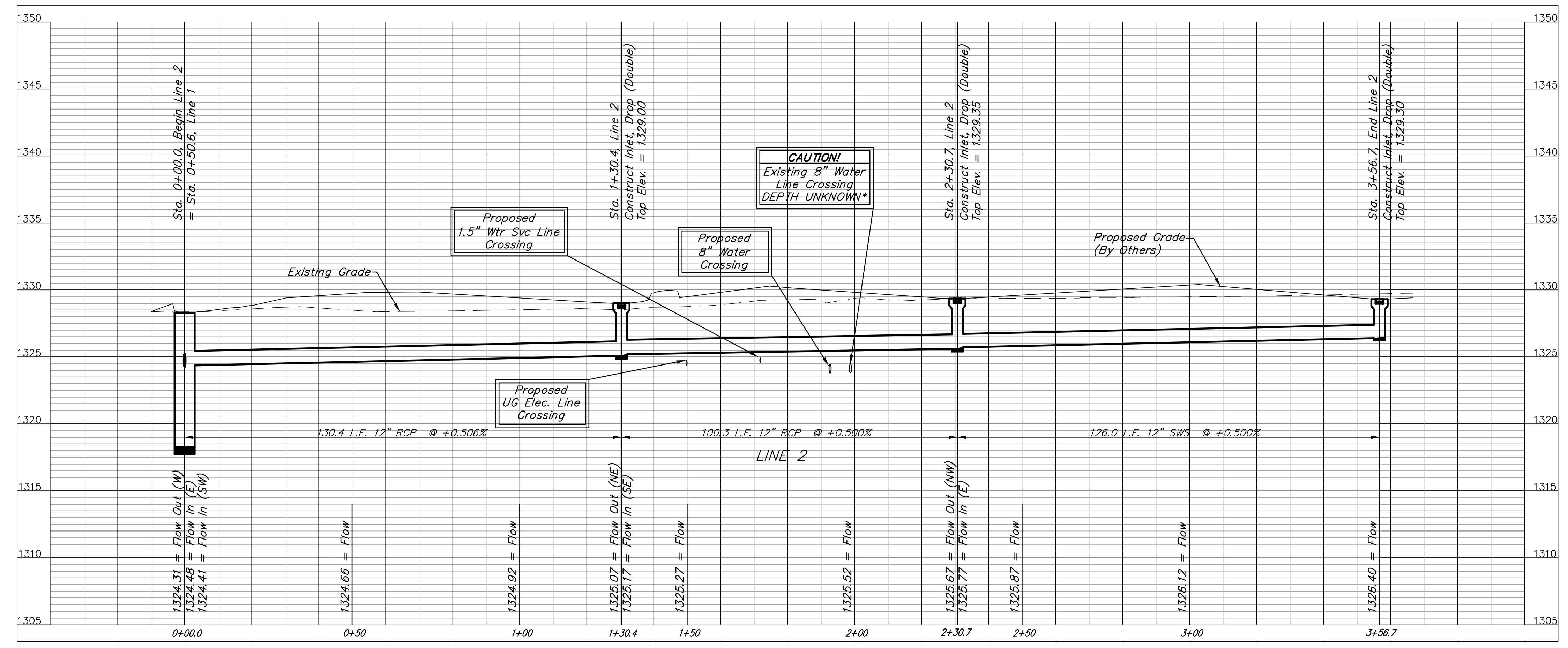
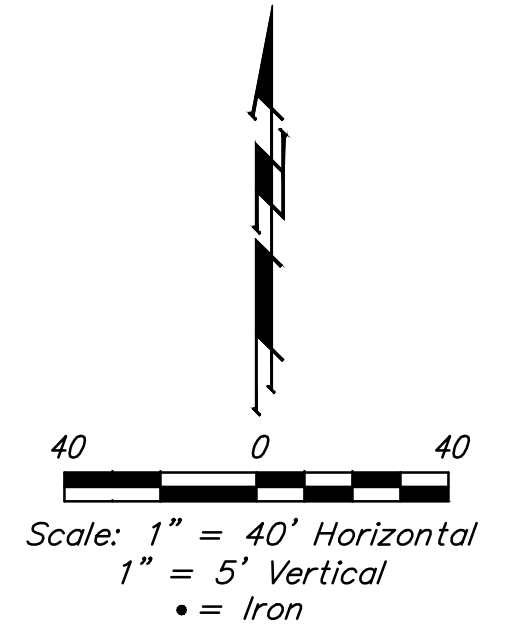


		<b>MEL HAMBELTON 2ND ADDITION</b> <b>LINE 1</b> STORM WATER SEWER IMPROVEMENTS	
		<small>Baughman Company, P.A. 315 Ellis St., Wichita, KS 67211 P 316-262-2771 F 316-262-0149          ENGINEERING   SURVEYING   PLANNING   LANDSCAPE ARCHITECTURE</small>	
PROJECT NUMBER  REVISIONS:	DESIGN TJW APPROVED  SCALE Noted SHEET	DRAWN TMS DATE 03/13	2 OF 9
<small>C:\Projects\Mel Hambleton 2nd Addition\PPD.dwg</small>		<small>12-09-ER09</small>	

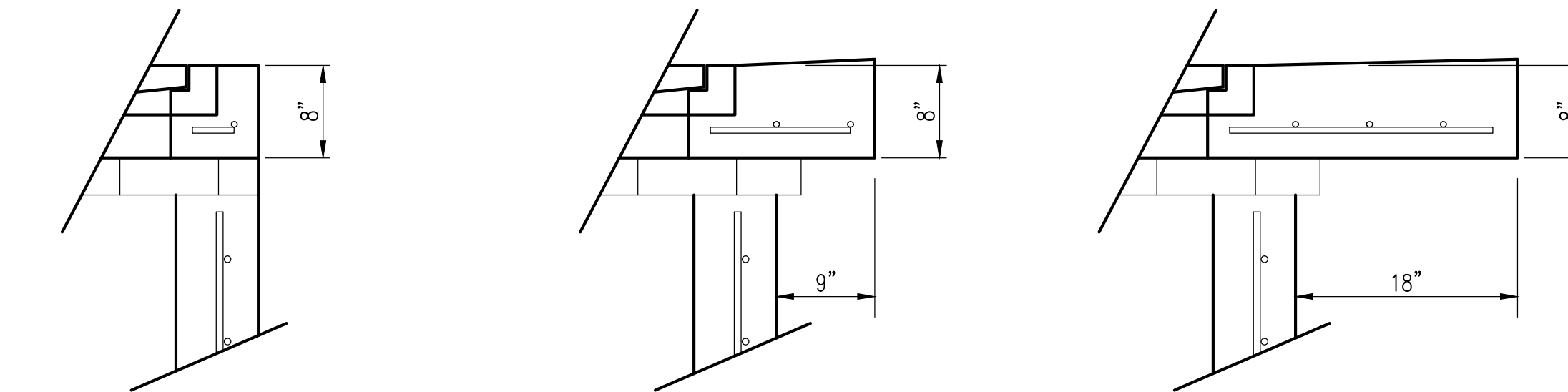
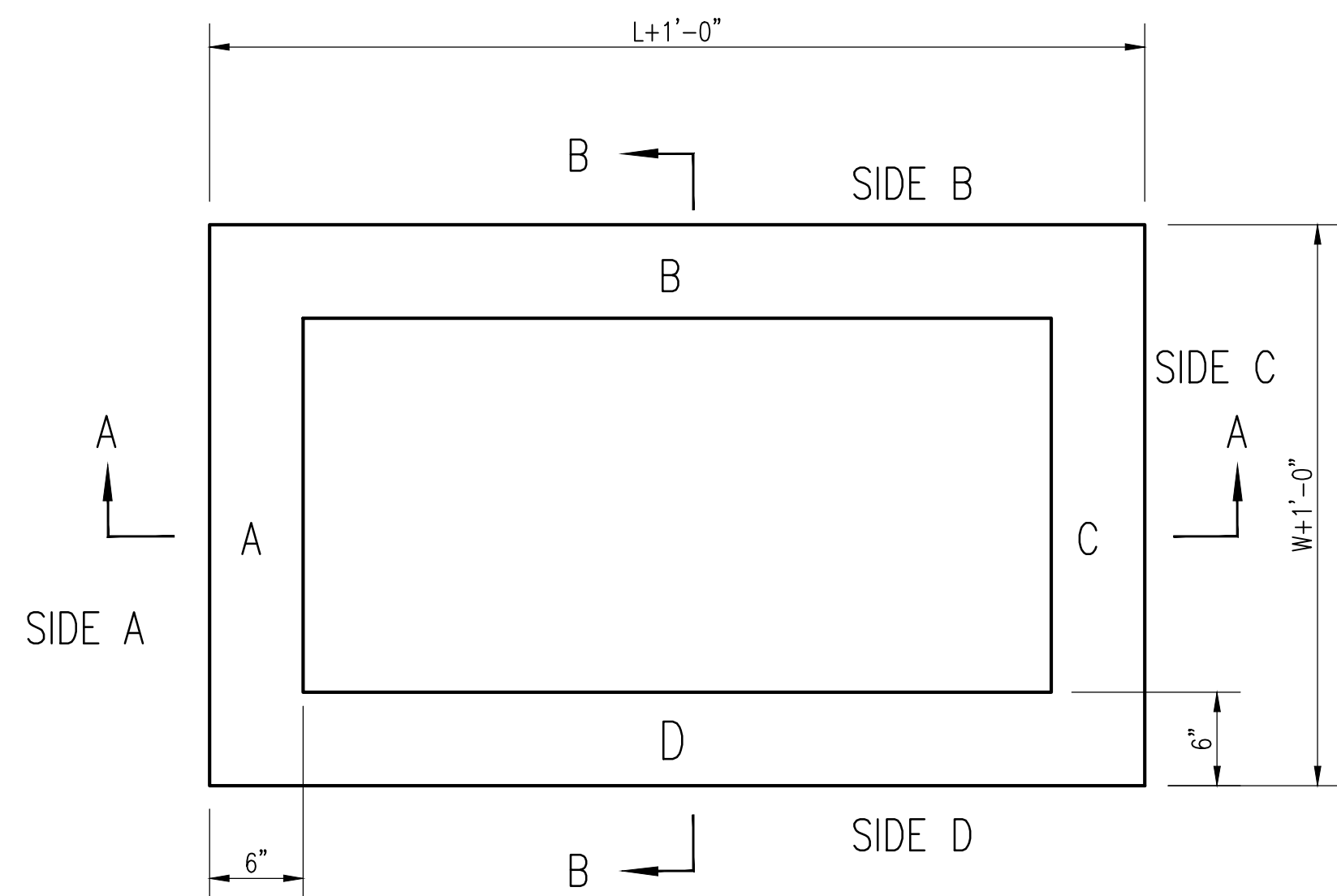
**BENCHMARKS:**  
 BM#1: City of Wichita Benchmark Disc on west end of RCBC Headwall, 17.7' N. & 35.9' W. of the NW corner of Lot 1, Block A, Mel Hambleton 2nd Addition. Elev. = 1328.33 NAVD88  
 BM#2: Railroad Spike in Power Pole, 38.8' W. & 1.0' S. of the first deflection corner south of the NE corner of Lot 1, Block A, Mel Hambleton 2nd Addition. Elev. = 1330.80 NAVD88



\*Depth of existing 8" water line unknown. Contractor to adjust water line if necessary for storm sewer construction.



		<b>MEL HAMBELTON 2ND ADDITION</b> <b>LINE 2</b> STORM WATER SEWER IMPROVEMENTS	
		<small>Baughman Company, P.A. 315 Ellis St., Wichita, KS 67211 P 316-262-7271 F 316-262-0149          ENGINEERING   SURVEYING   PLANNING   LANDSCAPE ARCHITECTURE</small>	
PROJECT NUMBER REVISIONS:	DESIGN TJW APPROVED Noted SHEET	DRAWN TMS DATE 03/13	<b>3 OF 9</b>
<small>C:\Projects\Mel Hambleton 2nd Addition\VPD.dwg</small>		<small>12-09-E809</small>	



FLUSH STYLE TOP  
NO APRON

9" APRON  
\* APRON TO EXTEND ON ALL 4 SIDES OF INLET.  
DESIGNER TO DESIGNATE APRON SIZE.

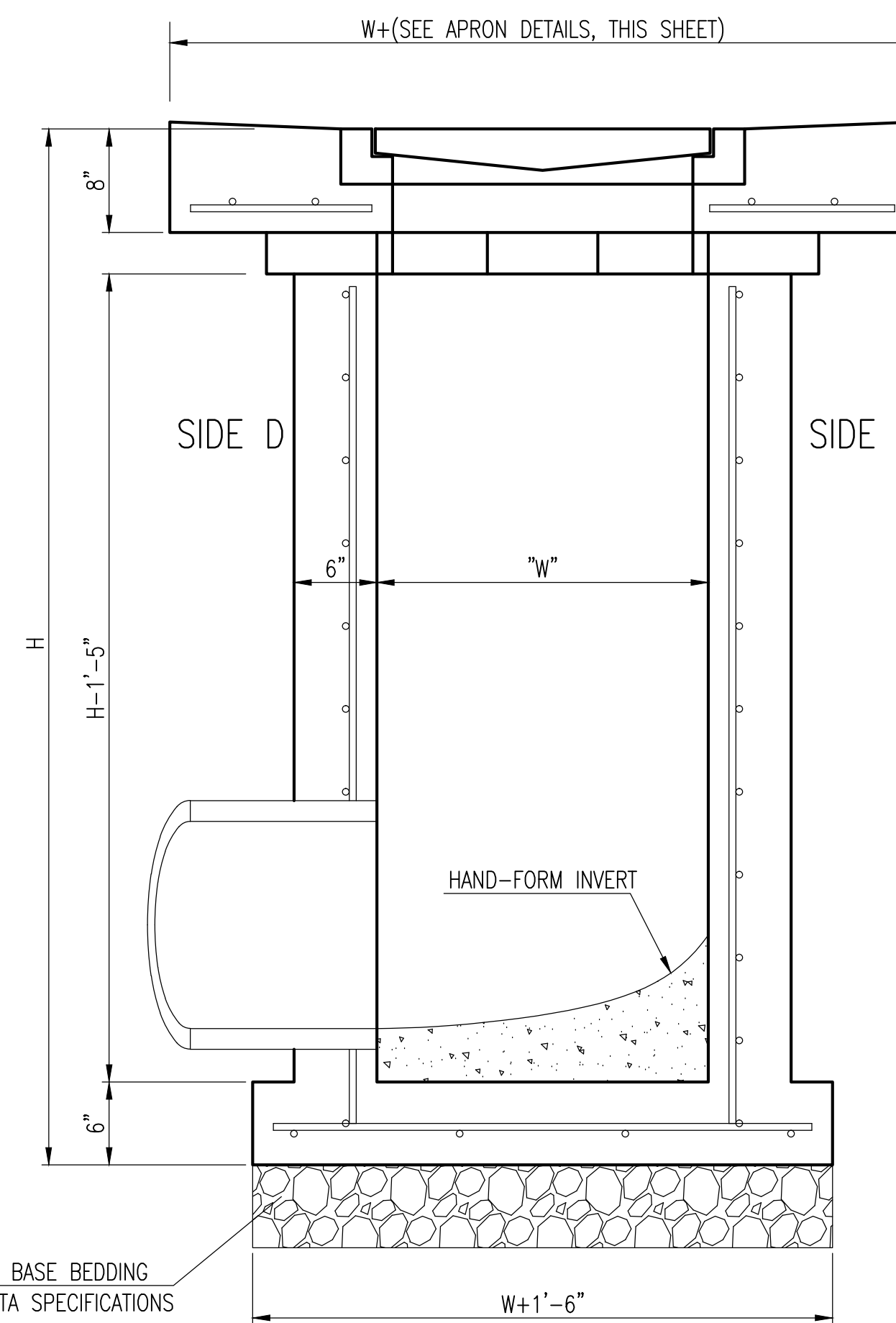
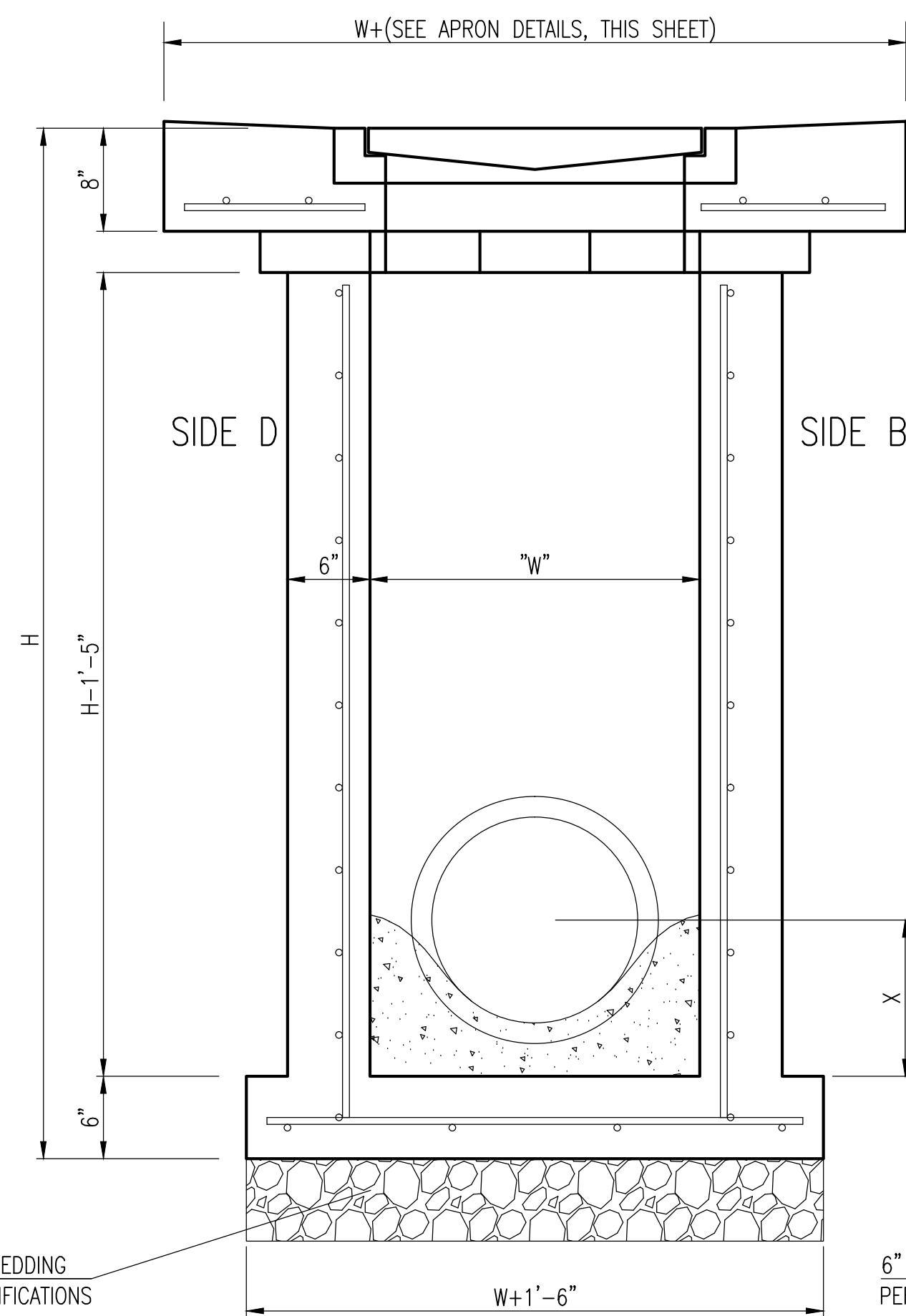
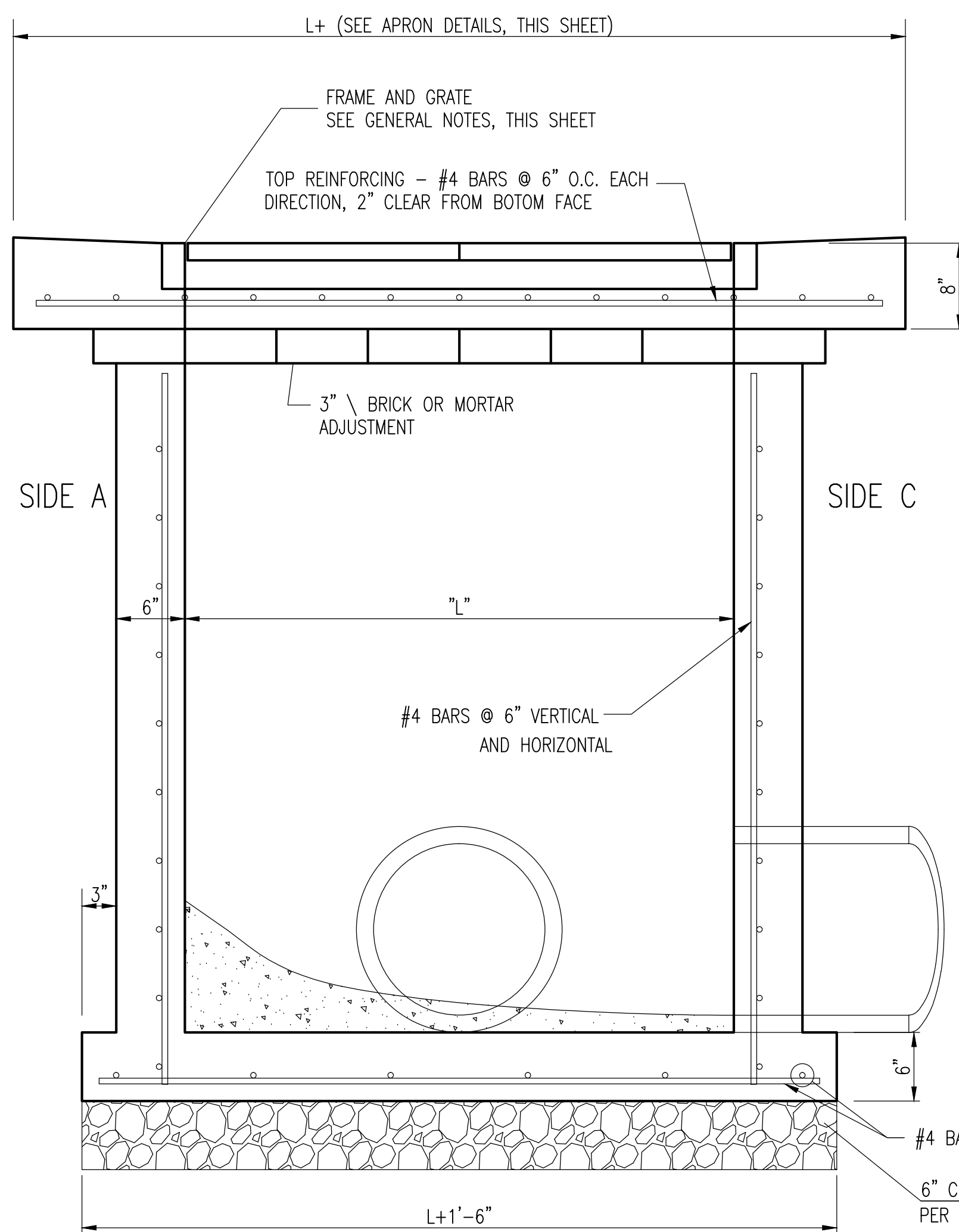
18" APRON


W=2' and L=2' for SINGLE DROP INLET  
W=2' and L=4' for DOUBLE DROP INLET

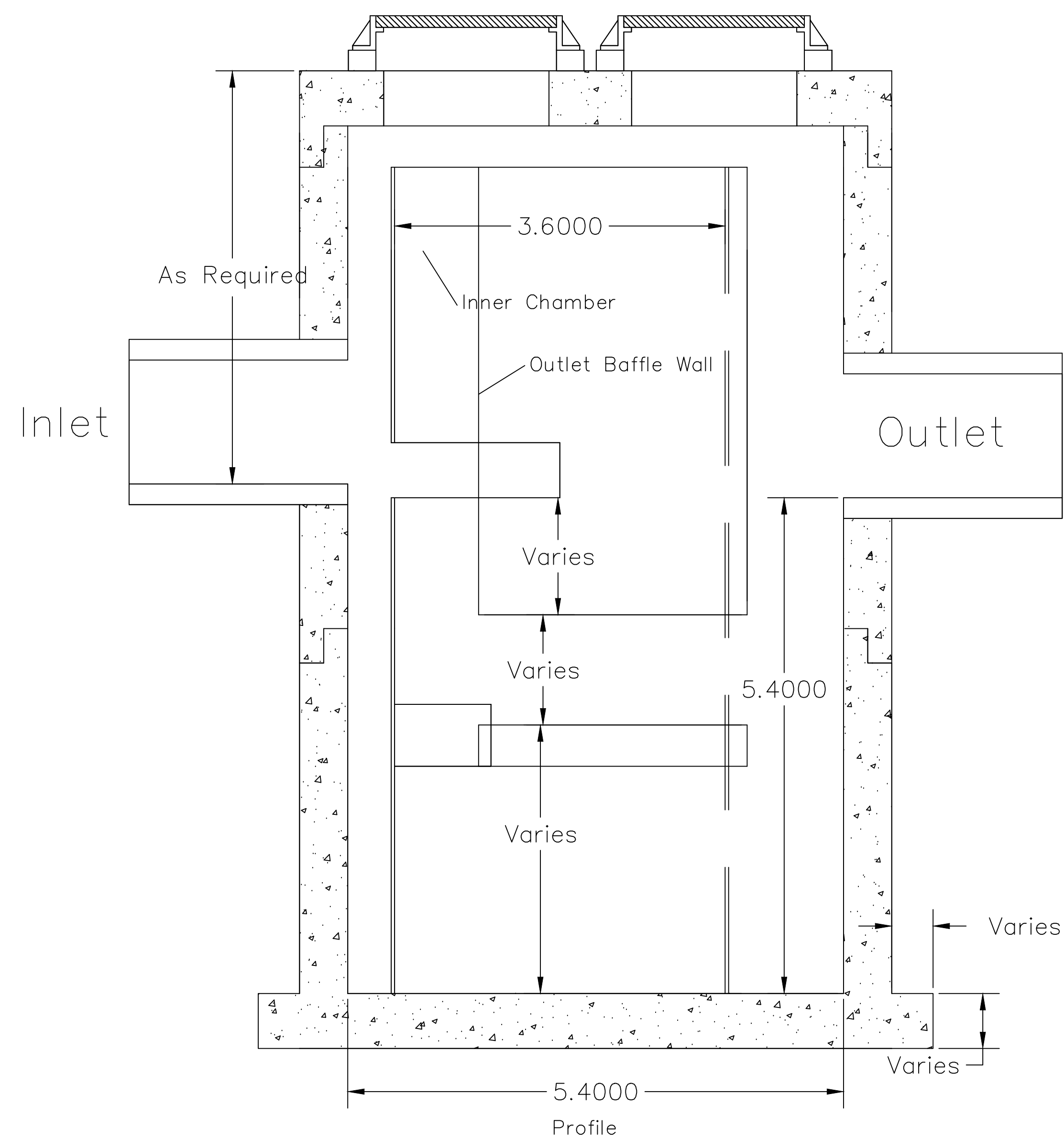
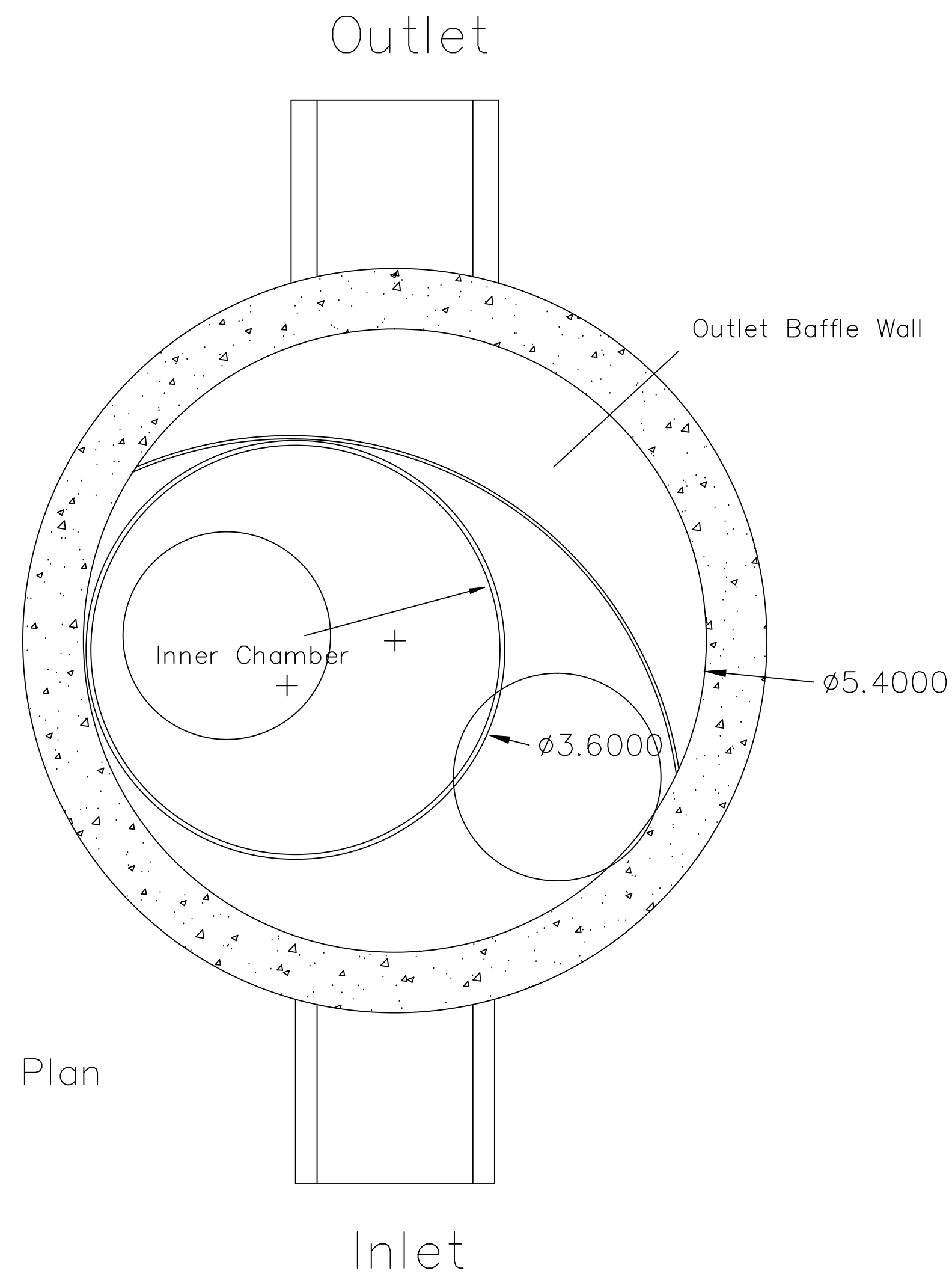
The structure(s) on this detail sheet are designed for HS-20 loading at these specific dimensions only. If larger dimensions are required, the ENGINEER shall provide a project specific structure design for approval by the City Engineer's office.

GENERAL NOTES

1. GRATE FRAME TO BE INSTALLED ON THIN MORTAR CUSHION TO INSURE FULL SUPPORT ALONG BRICK. CONCRETE USED FOR INLET CONSTRUCTION SHALL CONFORM TO CITY OF WICHITA SPECIFICATIONS FOR CONCRETE PAVEMENT MIX.
2. INLET INVERT SHALL BE SHAPED WITH 8 SACK SAND MIX CONCRETE TO CREATE FLOW CHANNELS AND TO INCREASE HYDRAULIC EFFICIENCY SUCH THAT THE INLET WILL BE SELF CLEANING BETWEEN ALL INLET AND/OR OUTLET PIPES.
3. THE ENDS OF ALL PIPES INSTALLED IN INLETS SHALL BE CUT OFF FLUSH WITH THE INSIDE FACE OF THE INLET WALL.
4. INLET FRAME AND GRATE TO BE DEETER #2433, EJIW #5391-Z1 OR APPROVED EQUAL FOR 2'x2' SINGLE DROP INLET AND DEETER #2434, EJIW #5391 Z3 OR APPROVED EQUAL FOR 2'x4' DOUBLE DROP INLET.
5. CONTRACTOR SHALL REMOVE LIFTING HOOKS AFTER INSTALLATION. RECESSES IN INLET WALL SHALL BE GROUTED FLUSH TO THE INLET WALL WITH HYDRAULIC CEMENT AFTER THE INLET IS IN PLACE. LIFTING HOLES THRU THE INLET WALL WILL NOT BE ACCEPTED.



 <b>CITY OF WICHITA</b> PUBLIC WORKS & UTILITIES ENGINEERING DIVISION			REVISION 05/10/2011 - GJ  <b>SINGLE/DOUBLE DROP INLET</b>  CITY ENGINEER <b>Gary Janzen, P.E.</b> City Engineer		
PROJECT NUMBER	OCA NUMBER	DATE	DESIGN	DRAWN	
		03/13	Staff	Staff	
CITY ENGINEER'S OFFICE CITY HALL - SEVENTH FLOOR 455 NORTH MAIN STREET WICHITA, KANSAS 67202-1620 (316) 268-4501			SHEET <b>4 of 9</b>		



U.S. Patent No. 6,951,619

Dimensions in inches  
 Permanent Pool Volume = 1250 US gallons  
 The Hydroguard must be cleaned after the construction period if it is used as a sediment and erosion control measure  
 The Hydroguard should be inspected once per year for stabilized sites  
 Inspection will determine the maintenance frequency (annual maintenance or once every two years typical for stabilized sites)  
 Sites with unstable conditions (exposed soil or materials storage) will require more frequent inspection and maintenance

Hydroworks, LLC  
 50 S. 21st St., Kenilworth, NJ 07033  
 Phone: 888-290-7900 Fax: 888-783-7271  
 Web: www.hydroworks.com


Hydroworks HG6 (72"  $\phi$ )

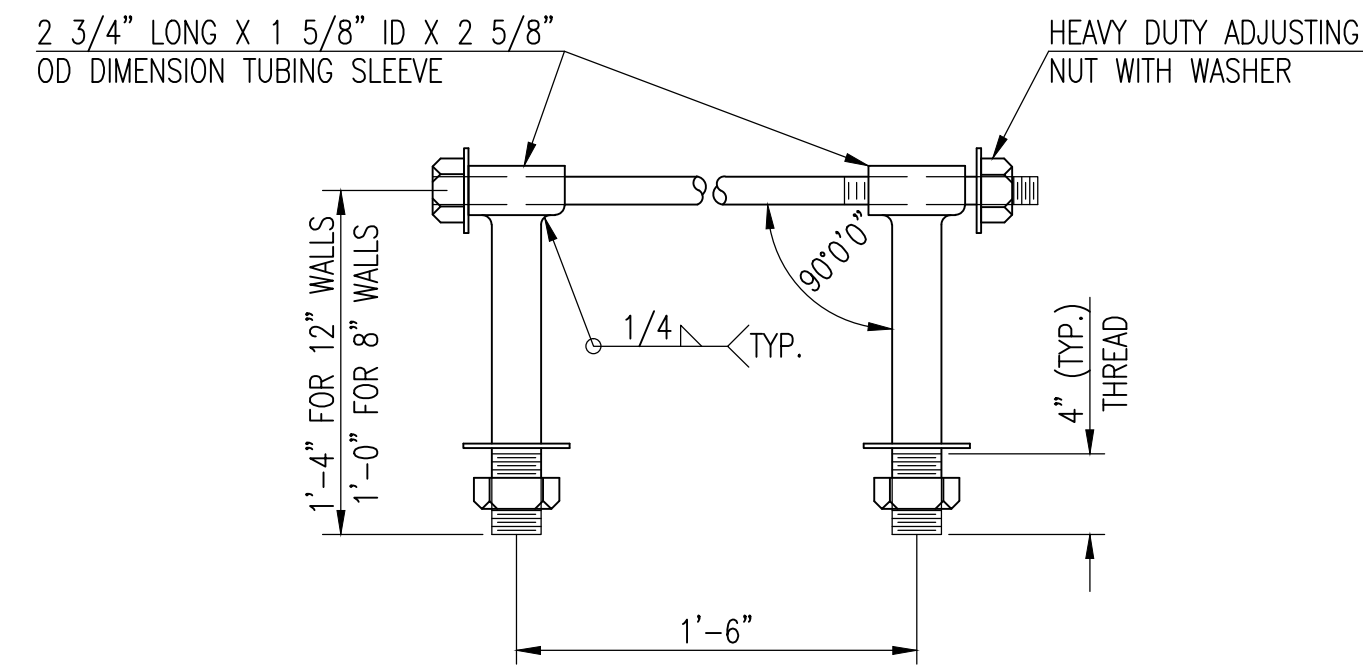
PROJECT:

LOCATION:

REVISION DATE: 02/10/2011



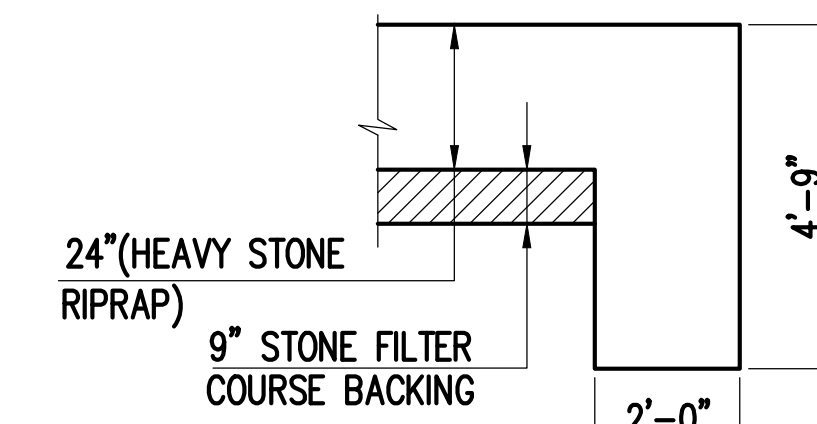
	MEL HAMBELTON 2ND ADDITION <b>6" DIA. HYDROWORKS</b> <b>WATER QUALITY UNIT</b> STORM WATER SEWER IMPROVEMENTS	
	<small>Baughman Company, P.A. 315 Ellis St., Wilkes-Barre, PA 18201 P 717-326-2771 F 717-326-2149          ENGINEERING   SURVEYING   PLANNING   LANDSCAPE ARCHITECTURE</small>	
PROJECT NUMBER	DESIGN	DRAWN
REVISIONS:	APPROVED	DATE
	Noted	03/13
	SHEET	5 OF 9



**HEAVY DUTY (H.D.) COUPLER**  
NO SCALE

NOTES

1. BOLTS TO BE A-36 1 1/2" DIAMETER.
2. BOLTS, NUTS, WASHERS AND SLEEVES TO BE ZINC PLATED.
3. WASHERS TO BE 3 1/2" O.D. X 7 GAUGE.
4. SHIP WITH NUTS AND WASHERS PLACED ON BOLTS.

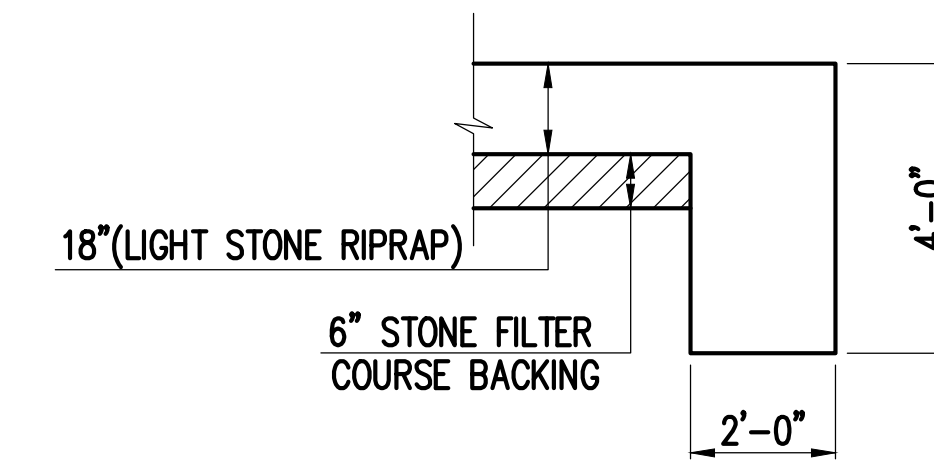


**TYPICAL SECTION THRU TOEWALL**  
NO SCALE

NOTES

1. ALL RIPRAP FOR THIS PROJECT SHALL BE NATURAL STONE. NEITHER BROKEN CONCRETE, FABRIC ENVELOPE, NOR PREMIXED DRY PACKAGED CONCRETE BAG ALTERNATES WILL BE ALLOWED, UNLESS INDICATED OTHERWISE.
2. TOEWALLS SHALL BE INSTALLED ALONG ALL UNPROTECTED EDGES OF STONE RIPRAP.
3. GROUTING OF THE SURFACE OF THE RIPRAP SHALL NOT BE PERFORMED, UNLESS INDICATED OTHERWISE. GROUTING OF THE TOEWALLS SHALL BE PERFORMED PER CITY SPECIFICATIONS.

**HEAVY STONE RIPRAP DETAILS**

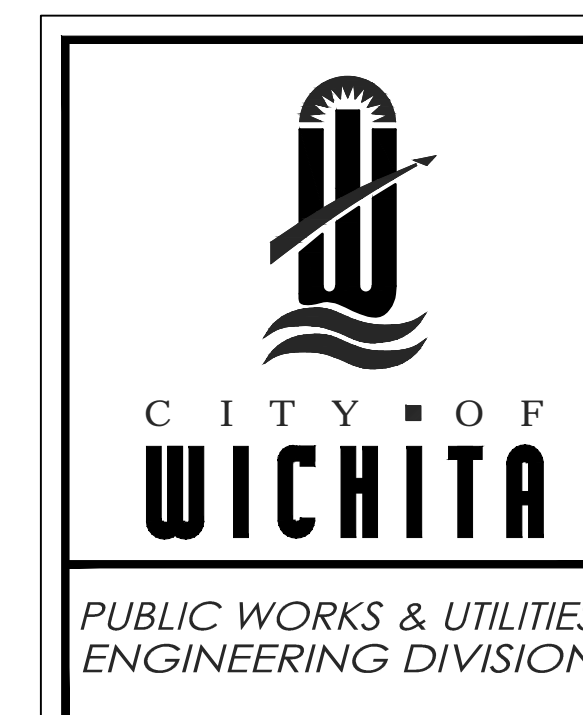


**TYPICAL SECTION THRU TOEWALL**  
NO SCALE

NOTES

1. ALL RIPRAP FOR THIS PROJECT SHALL BE NATURAL STONE. NEITHER BROKEN CONCRETE, FABRIC ENVELOPE, NOR PREMIXED DRY PACKAGED CONCRETE BAG ALTERNATES WILL BE ALLOWED, UNLESS INDICATED OTHERWISE.
2. TOEWALLS SHALL BE INSTALLED ALONG ALL UNPROTECTED EDGES OF STONE RIPRAP.
3. GROUTING OF THE SURFACE OF THE RIPRAP SHALL NOT BE PERFORMED, UNLESS INDICATED OTHERWISE. GROUTING OF THE TOEWALLS SHALL BE PERFORMED PER CITY SPECIFICATIONS.

**LIGHT STONE RIPRAP DETAILS**



**MISCELLANEOUS  
DETAILS  
(STORM SEWER)**

CITY ENGINEER

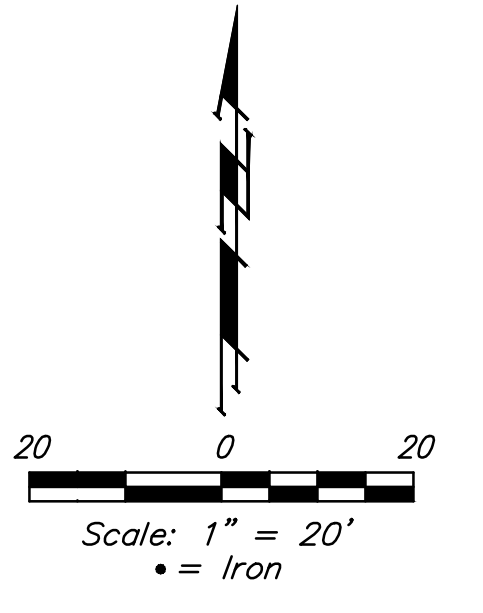
*Gary Janzen, P.E.*

*City Engineer*

PROJECT NUMBER	OCA NUMBER	DATE
		03/13

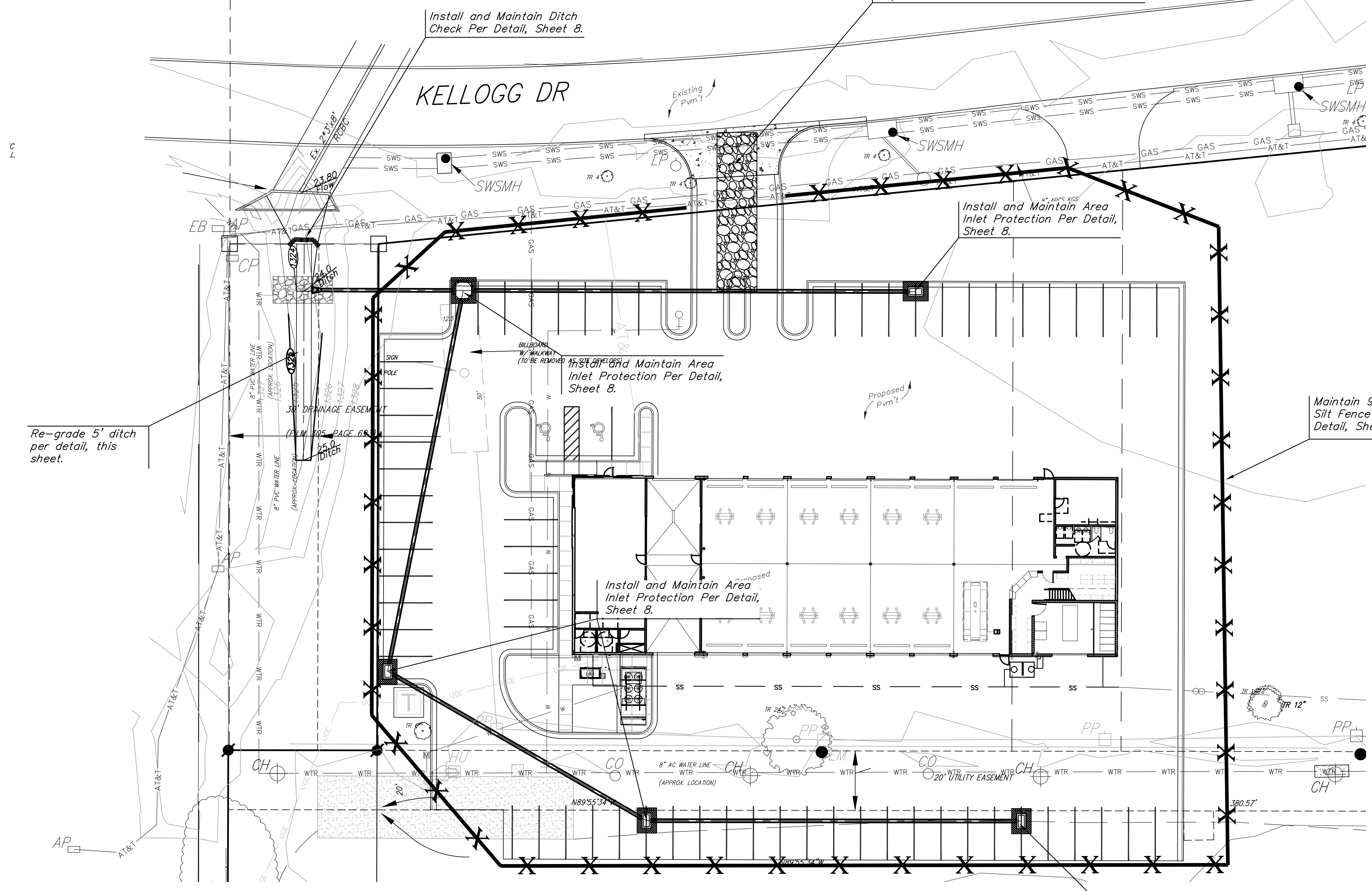
CITY ENGINEER'S OFFICE CITY HALL - SEVENTH FLOOR 455 NORTH MAIN STREET WICHITA, KANSAS 67202-1620 (316) 268-4501	DESIGN	DRAWN
	Staff	Staff
SHEET		6 of 9

**CONSTRUCTION ENTRANCE INFORMATION:**  
 Contractor Shall Maintain Approved Entrance as Discussed in the Storm Water Pollution Prevention Plan Guidelines, and Detail, Sheet 8. Entrance Shall be a Minimum of 12' Wide by 50' in Length With 2"-3" Dia. Stone at a Depth of 6".



**EROSION CONTROL PLAN LEGEND**  
 (Installation Details Found in the SWP2 Plan)

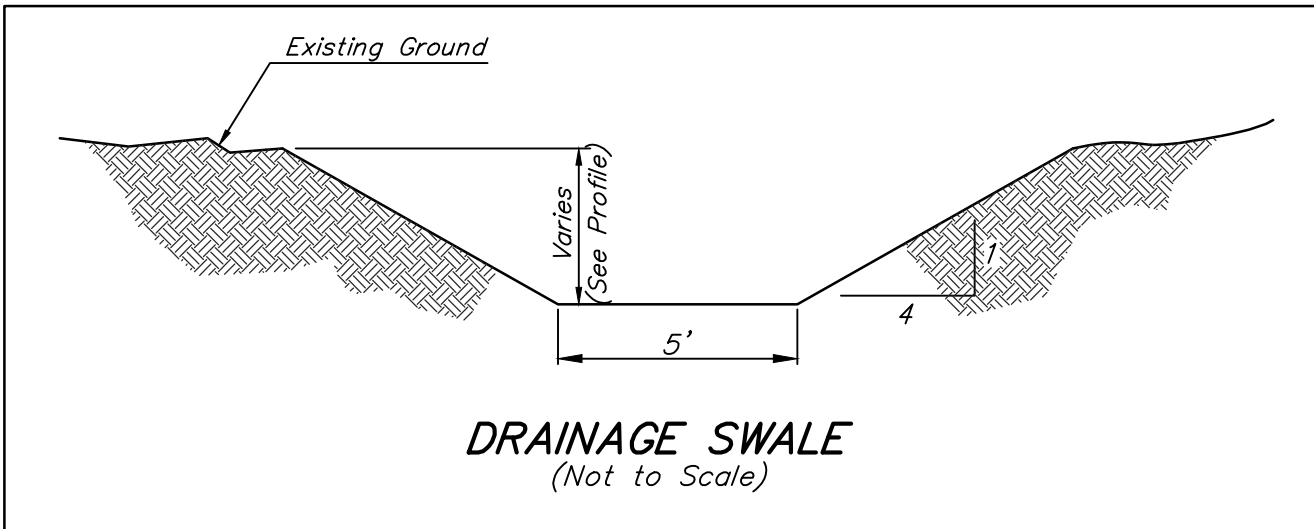
- DROP INLET PROTECTION
- CURB INLET PROTECTION
- DITCH CHECKS
- SILT FENCING
- CUT-OFF TRENCH
- BACK OF CURB PROTECTION
- EROSION CONTROL MAT
- TEMPORARY DITCH  
NO SCALE



EROSION CONTROL MEASURE	INSTALL	MAINTAIN	REMOVE
BACK OF CURB PROTECTION (LF)	0	1	0
CONSTRUCTION ENTRANCE (EA)	0	0	0
CURB INLET BARRIER (EA)	0	0	0
DITCH CHECK (EA)	1	0	0
DROP INLET PROTECTION (EA)	5	0	0
EROSION CONTROL (LS)	0	0	0
EROSION CONTROL BERM (LF)	0	0	0
SILT FENCE (LF)	0	930	0
EROSION CONTROL MAT (SY)	0	0	0

QUANTITIES ARE FOR INFORMATION ONLY! CONTRACTOR SHALL VERIFY QUANTITIES PER FINAL BID QUANTITY SHEET.

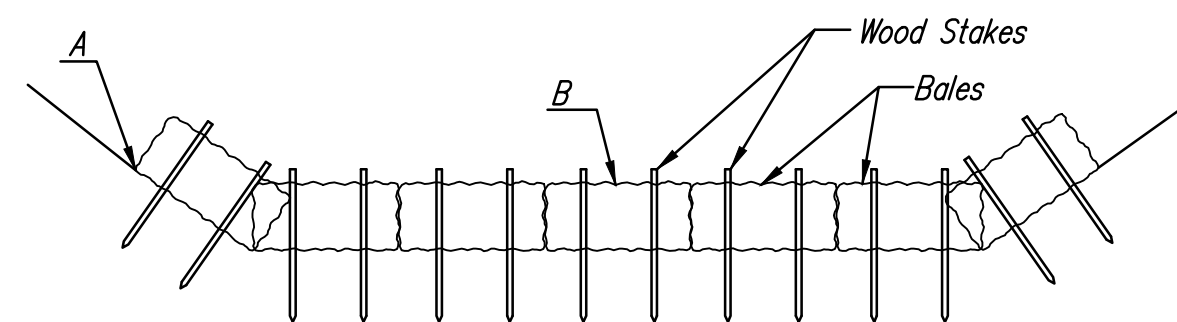
\* ALL EXISTING BMPs INCLUDING CONSTRUCTION ENTRANCE, SEDIMENT BARRIERS, SILT FENCE, CUT-OFF TRENCH, AND EROSION CONTROL MAT SHALL BE MAINTAINED AND REPAIRED IF NECESSARY. REPLACEMENT OR REMOVAL OF EROSION CONTROL MEASURES TO BE PAID FOR BY L.S. BID ITEM "MAINTAIN EXISTING EROSION CONTROL BMPs"



Install and Maintain Area Inlet Protection Per Detail, Sheet 8.

	MEL HAMBELTON 2ND ADDITION	
	EROSION CONTROL PLAN	
STORM WATER SEWER IMPROVEMENTS		
<small>Baughman Company, P.A. 315 Ellis St. Wichita, KS 67211 P 316-262-2771 F 316-262-0149          ENGINEERING   SURVEYING   PLANNING   LANDSCAPE ARCHITECTURE</small>		
PROJECT NUMBER	DESIGN	DRAWN
	TJW	TMS
REVISIONS:	APPROVED	DATE
		03/13
	SCALE	
	Noted	
	SHEET	
		<b>7 OF 9</b>
<small>C:\Projects\Mel Hamblon 2nd Addition.VPD.dwg 12-09-ES09</small>		

NOTE: Point A must be higher than Point B so that water flows over the bales and not around them.



### STRAW BALE DITCH CHECKS

#### Material Specification:

Bale ditch checks may be constructed of wheat straw, oat straw, prairie hay, or bromegrass hay that is free of weeds declared noxious by the Kansas State Board of Agriculture. The stakes used to anchor the bales should be a hardwood material with the following minimum dimensions: 2" square (nominal) by 4' long. Optional: The downstream scour apron should be constructed of a double-netted straw erosion-control blanket at least 6' wide. Optional: The metal landscape staples used to anchor the erosion-control blanket should be at least 8" long.

#### Placement:

Bale ditch checks should be placed perpendicular to the flowline of the ditch. The ditch check should extend far enough so that the ground level at the ends of the check is higher than the top of the lowest center bale. This prevents water from flowing around the check.

Straw bale ditch checks should not be placed in ditches where high flows are expected. Rock checks should be used instead.

Bales should be placed in ditches with slopes of 6% or less. For slopes steeper than 6%, rock checks should be used.

The following table provides check spacing for a given ditch grade:

Ditch grade (%)	Check Spacing (feet)
0.5	200
1.0	200
2.0	100
3.0	65
4.0	50
5.0	40
6.0	30

#### Proper installation method:

Excavate a trench perpendicular to the ditch flowline that is 4" deep and a bale's width wide. Extend the trench in a straight line along the entire length of the proposed ditch check. Place the soil on the upstream side of the trench—it will be used later. Optional: On the downstream side of the trench, roll out a length of erosion-control blanket (scour apron) equal to the length of the trench. Place the upstream edge of the erosion-control blanket along the bottom upstream edge of the trench. The erosion control blanket should be anchored in the trench with one row of 8" landscape staples placed on 18" centers. The remainder of the erosion-control blanket (the portion that is not lying in the trench) will serve as the downstream scour apron. This section of the blanket should be anchored to the ground with 8" landscape staples placed around the perimeter of the blanket on 18" centers. The remainder of the blanket should be anchored using two evenly spaced rows of 8" landscape staples on 18" centers placed perpendicular to the flowline of the ditch. Place the bales in the trench, making sure that they are butted tightly. Two stakes should be driven through each bale along the centerline of the ditch check, approximately 6" to 8" in from the bale ends. Stakes should be driven at least 12" into the ground. Once all the bales have been installed and anchored, place the excavated soil against the upstream side of the check and compact it. The compacted soil should be no more than 3" to 4" deep and extend upstream no more than 24".

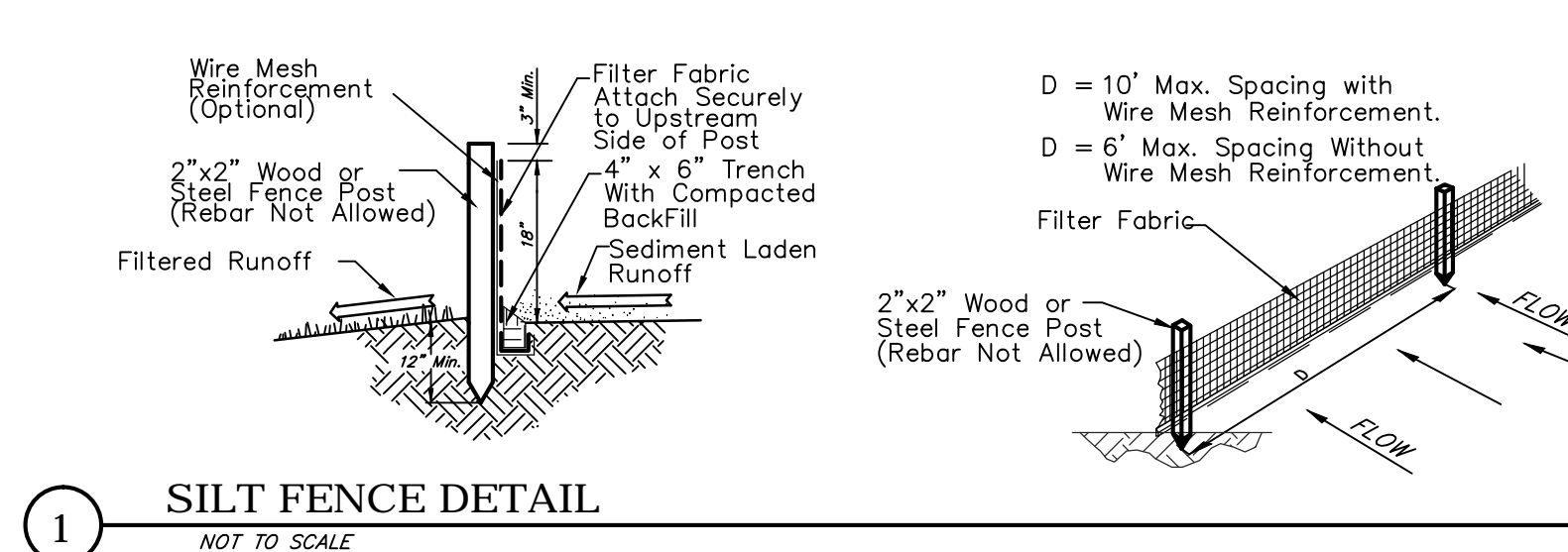
#### List of common placement/installation mistakes to avoid:

Do not place a bale ditch check directly in front of a culvert outlet. It will not stand up to the concentrated flow.  
Do not place bale ditch checks in ditches that will likely experience high flows. They will not stand up to concentrated flow.  
Follow prescribed ditch-check spacing guidelines. If spacing guidelines are exceeded, erosion will occur between the ditch checks.  
Do not allow water to flow around the ditch check. Make sure that the ditch check is long enough so that the ground level at the ends of the check is higher than the top of the lowest center bale.  
Do not place bale ditch checks in channels with shallow soils underlain by rock. If the check is not anchored sufficiently, it will wash out.  
Bale ditch checks must be dug into the ground. Bales at ground level do not work because they allow water to flow under the check.

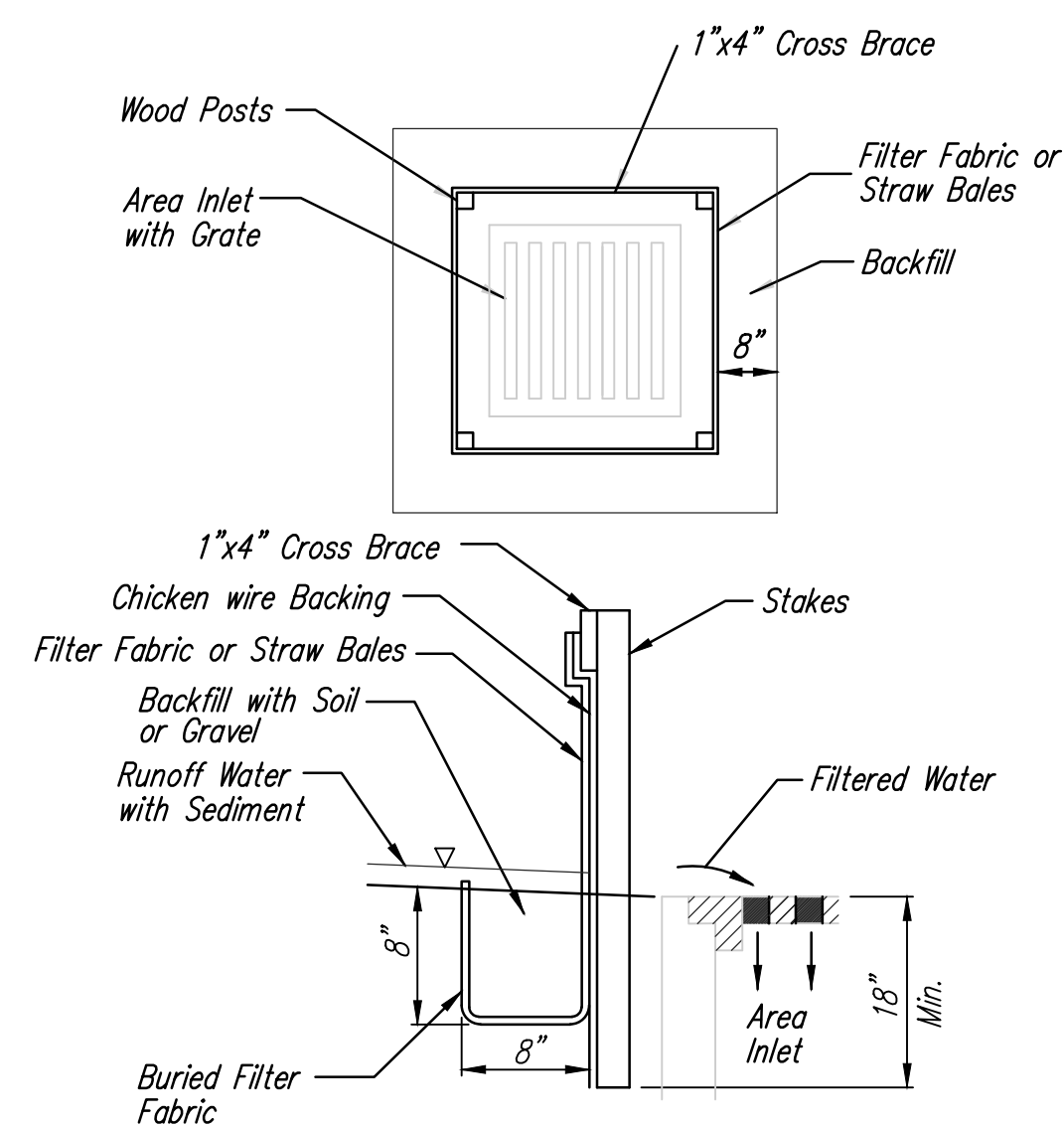
#### Inspection and Maintenance:

Bale ditch checks should be inspected every 7 days and within 24 hours of a rainfall of 1/2" or more. The following is a list of questions that should be addressed during each inspection:

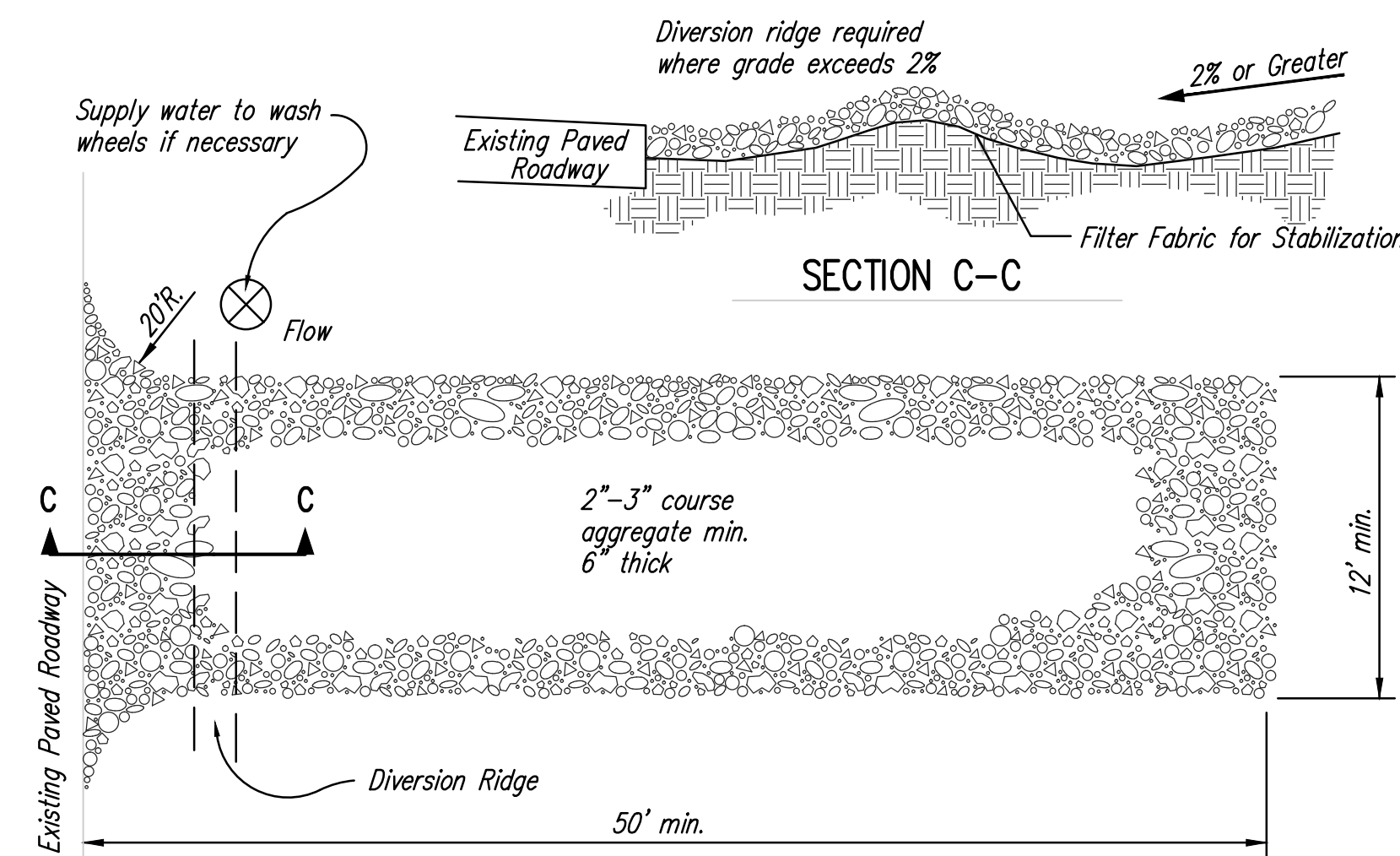
- Does water flow around the ditch check?
- Does water flow under the ditch check?
- Does water flow through spaces between abutting bales?
- Are any bales and/or scour aprons (optional) dislodged?
- Are bales decomposing due to age and/or water damage?
- Does sediment need to be removed from behind the ditch check?



1 SILT FENCE DETAIL  
NOT TO SCALE



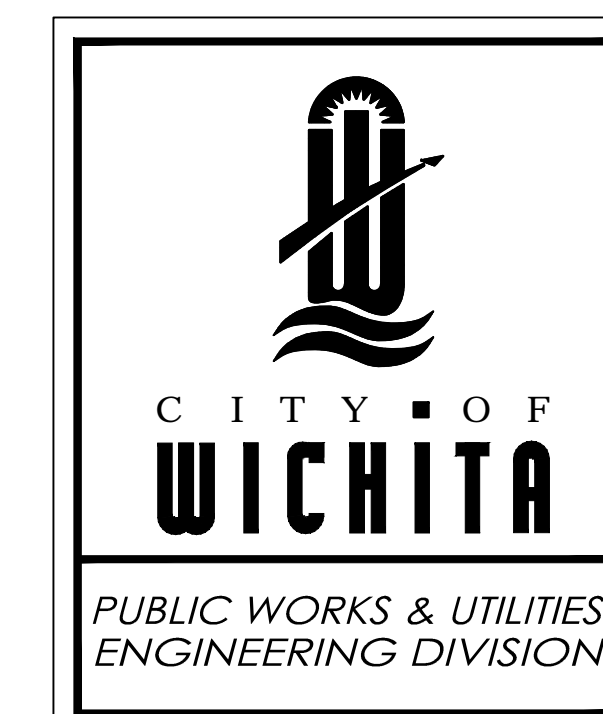
2 INLET PROTECTION FOR AREA INLETS  
(INLET PROTECTION: SILT FENCE OR STRAW BALES)



#### NOTES:

1. THE ENTRANCE SHALL BE MAINTAINED IN A CONDITION THAT WILL PREVENT TRACKING OR FLOWING OF SEDIMENT ONTO PUBLIC RIGHTS-OF-WAY. THIS MAY REQUIRE TOP DRESSING, REPAIR AND/OR CLEANOUT OF ANY MEASURES USED TO TRAP SEDIMENT.
2. WHEN NECESSARY, WHEELS SHALL BE CLEANED PRIOR TO ENTRANCE ONTO PUBLIC RIGHT-OF-WAY.
3. WHEN WASHING IS REQUIRED, IT SHALL BE DONE ON AN AREA STABILIZED WITH CRUSHED STONE THAT DRAINS INTO AN APPROVED SEDIMENT TRAP OR SEDIMENT BASIN, AS SHOWN ABOVE.
4. DRIVE ENTRANCES ONTO RESIDENTIAL LOTS WILL NOT BE REQUIRED TO HAVE THE SEDIMENT BARRIER SHOWN, BUT WHEEL WASHING MAY BE REQUIRED IF STABILIZED ENTRANCE IS NOT SUFFICIENT TO KEEP MUD FROM BEING TRACKED ONTO ADJACENT STREET. ENTRANCE SHALL EXTEND FROM BACK OF CURB TO DWELLING.

3 STABILIZED CONSTRUCTION ENTRANCE  
NOT TO SCALE

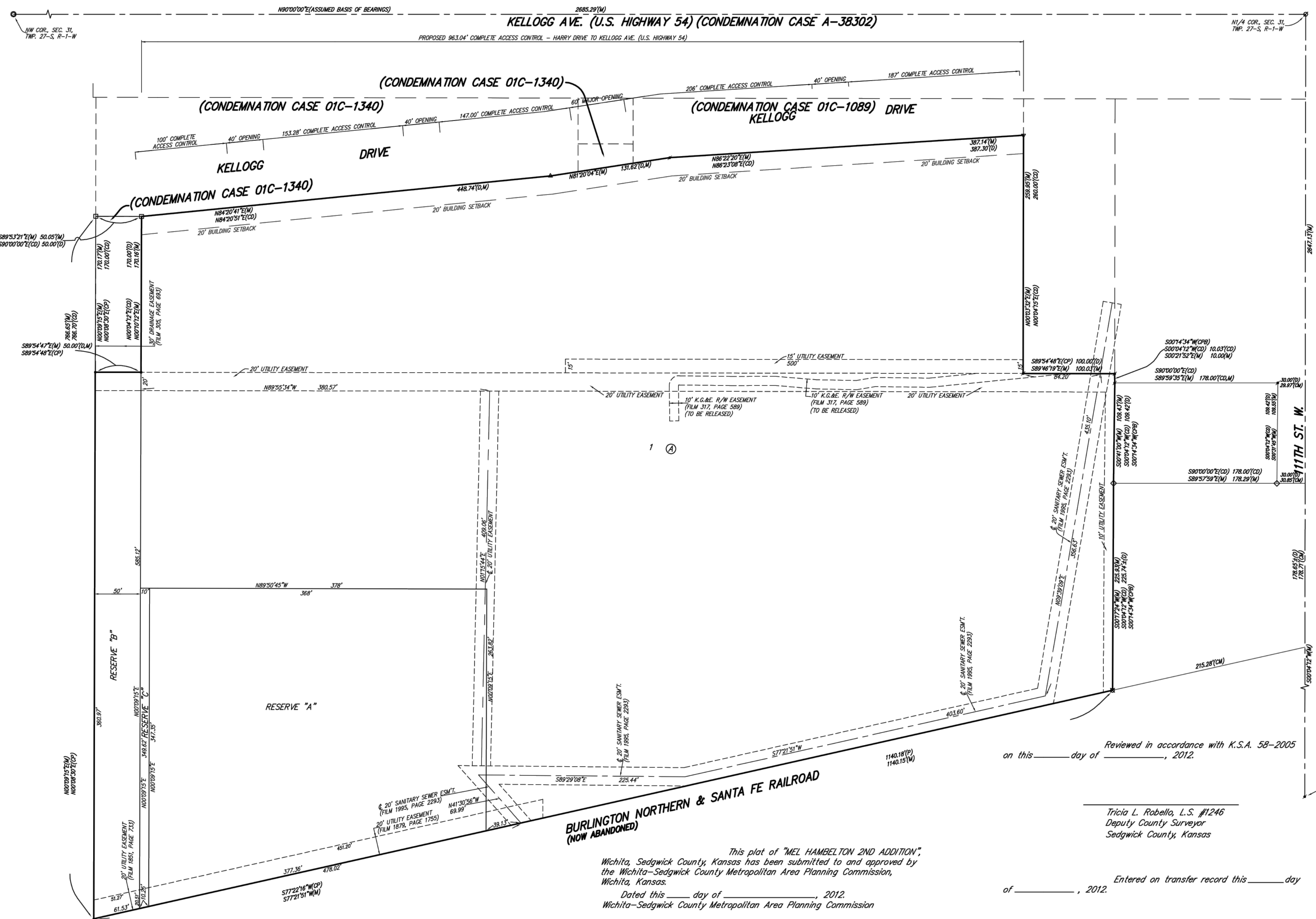


### SILT FENCE, AREA INLET PROTECTION AND CONSTRUCTION ENTRANCE

INTERIM CITY ENGINEER  
Gary Janzen, P.E. City Engineer

PROJECT NUMBER	OCA NUMBER	DATE
		03/13
CITY ENGINEER'S OFFICE		DESIGN
CITY HALL - SEVENTH FLOOR		DRAWN
455 NORTH MAIN STREET		
WICHITA, KANSAS 67202-1620		SHEET
(316) 268-4501		8 of 9

# MEL HAMBELTON 2ND ADDITION WICHITA, SEDGWICK COUNTY, KANSAS



0 60 120

\* = #4 REBAR W/ "BAUGHMAN" CAP (FOUND)  
 \* = #4 REBAR W/ "BAUGHMAN" CAP (FOUND)  
 ○ = 1" IRON PIPE (FOUND)  
 ○ = #5 REBAR IN TRIMBLE (FOUND)  
 □ = 3/4" IRON PIPE W/ "PEC" CAP (FOUND)  
 □ = ALUMINUM CAP IN TRIMBLE (FOUND)  
 ▽ = #4 REBAR (FOUND)  
 ▽ = #4 REBAR W/ "BAUGHMAN" CAP SET OVER FOUND 1/2" IRON PIPE 30" DEEP  
 △ = 3/4" IRON PIPE (FOUND)

(M) = MEASURED  
 (P) = PLATTED  
 (D) = DESCRIBED  
 (CM) = CALCULATED PER MEASURED INFO.  
 (CP) = CALCULATED PER PLATTED INFO.  
 (CD) = CALCULATED PER DESCRIBED INFO.  
 (CPS) = CALCULATED PER PLAT OF BLASI PARK ADDITION

MINIMUM BUILDING PAD ELEVATIONS FOR LOWEST OPENING TO THE STRUCTURES		
LOT	BLOCK	ELEVATION
1	A	1330.0

BENCHMARK:  
 City of Wichita Benchmark Disc on west end of RDCB Headwall, 17.7' N. & 35.9' W. of the NW corner of Lot 1, Block A, Mel Hambelton 2nd Addition. Elev. = 1326.33 NAVD83  
 Railroad Spike in Power Pole, 38.8' W. & 1.0' S. of the first deflection corner south of the NE corner of Lot 1, Block A, Mel Hambelton 2nd Addition. Elev. = 1330.80 NAVD83

State of Kansas) SS  
 Sedgwick County) We, Baughman Company, P.A., Surveyors in aforesaid county and state do hereby certify that we have surveyed and platted "MEL HAMBELTON 2ND ADDITION", Wichita, Sedgwick County, Kansas and that the accompanying plat is a true and correct exhibit of the property surveyed, described as Beginning at a point on the south right-of-way line of U.S. Highway 54 as condemned in Case No. A-38302, said point being 794.5 feet west of the east line of the Northwest Quarter of Section 31, Township 27 South, Range 1 West of the Sixth Principal Meridian, Sedgwick County, Kansas; thence south parallel to the east line of said Northwest Quarter, 300 feet; thence west parallel to the south right-of-way line of said Highway, 526.5 feet; thence north parallel to the east line of said Northwest Quarter, 300 feet to the south right-of-way line of said Highway, 526.5 feet to the point of beginning, except that part taken for Highway in Condemnation Case No. 01C1340, TOGETHER with that part of said Northwest Quarter described as follows: Beginning at a point on the south right-of-way line of U.S. Highway 54 as condemned in Case No. A-38302, said point being 208 feet west of the east line of the Northwest Quarter of Section 31, Township 27 South, Range 1 West of the Sixth Principal Meridian, Sedgwick County, Kansas; thence south parallel to the east line of said Northwest Quarter, 300 feet; thence west parallel to said south right-of-way line of said Highway, 526.5 feet; thence north, 300 feet to said south right-of-way line; thence east, 526.5 feet to the point of beginning, except the east 100 feet thereof, and except that part taken for Highway in Case No. 01C1089, and TOGETHER with Lot 1, Block A, Blasi Park, Sedgwick County, Kansas, except that part taken for highway described as commencing at a point on the south right-of-way line of U.S. Highway 54 as condemned in Case No. A-38302, said point being 794.5 feet west of the east line of the Northwest Quarter of Section 31, Township 27 South, Range 1 West of the Sixth Principal Meridian, Sedgwick County, Kansas; thence south parallel to the east line of said Northwest Quarter, a distance of 50 feet to the point of beginning; thence south parallel with the east line of said Northwest Quarter, a distance of 65 feet; thence east parallel with the south right-of-way line of said Highway, a distance of 60 feet; thence north parallel with the east line of said Northwest Quarter, a distance of 65 feet to a point on the south right-of-way line of said Highway; thence west along the south right-of-way line of said Highway, a distance of 60 feet to the point of beginning.

Existing public easements and dedications being vacated by virtue of K.S.A. 12-512(b).

Baughman Company, P.A.

\_\_\_\_\_, Surveyor

Michael G. Conrey

Know all men by these presents that we, the undersigned, have caused the land in the surveyors certificate to be platted into Lots, Blocks, and Streets, to be known as "ADDITION", Wichita, Sedgwick County, Kansas. The utility easements are hereby granted as indicated for the construction and maintenance of all public utilities. The drainage and utility easements are hereby granted as indicated for drainage purposes and for the construction and maintenance of all public utilities. The drainage easements are hereby granted as indicated for drainage purposes. The streets are hereby dedicated to and for the use of the public. Reserve "A" is hereby reserved for open space, lakes, berms, landscaping, drainage purposes, and utilities as confined to easements. Reserves "B" and "C" are hereby reserved for open space, landscaping, private drives, public access purposes including drainage maintenance equipment, drainage purposes, and utilities as confined to easements. Private drives and public access purposes shall be restricted to the east 20.00 feet of said Reserve "B" provided, however, that one public access crossing shall be allowed over the west 30.00 feet of said Reserve "B". Drainage structures shall be allowed within said Reserves "A" and "B" provided, however, that no drainage structure within said Reserve "A" or within the east 20.00 feet of said Reserve "B" shall restrict or deny any access purposes. Any open drainage channels in said Reserve "B" shall be restricted to the west 30.00 feet of said Reserve "B". Access controls shall be as depicted on the face of the plat and are hereby granted to the City of Wichita, Kansas. Reserves "A", "B" and "C" shall be owned by the owner of Lot 1, Block A. Reserves "A" and "C" shall be maintained by the owner of Lot 1, Block A. Reserve "B" shall be maintained by the owner of Lot 1, Block A and the City of Wichita, Kansas. The permitted opening locations shall be as determined by the City Engineer of the City of Wichita, Kansas. The Minimum Building Pad Elevations for the lowest opening to the structures shall be as indicated on the face of the plat.

Out of the Box Investments, LLC

\_\_\_\_\_, Member

Lisa A. Hambelton

State of Kansas) SS  
 Sedgwick County) The foregoing instrument acknowledged before me, this \_\_\_\_\_ day of \_\_\_\_\_, 2012, by Lisa A. Hambelton, Member of Out of the Box, on behalf of the limited liability company.

\_\_\_\_\_, Notary Public

My App't. Exp. \_\_\_\_\_

We the undersigned holders of a mortgage on the above described property, do hereby consent to this plat of "MEL HAMBELTON 2ND ADDITION", Wichita, Sedgwick County, Kansas.

Fidelity Bank

\_\_\_\_\_, (Title)

This plat of "MEL HAMBELTON 2ND ADDITION", Wichita, Sedgwick County, Kansas has been submitted to and approved by the Wichita-Sedgwick County Metropolitan Area Planning Commission, Wichita, Kansas.

Dated this \_\_\_\_\_ day of \_\_\_\_\_, 2012.

Wichita-Sedgwick County Metropolitan Area Planning Commission

\_\_\_\_\_, Chair

Shawn Farney

\_\_\_\_\_, Secretary

John L. Schlegel

Reviewed in accordance with K.S.A. 58-2005 on this \_\_\_\_\_ day of \_\_\_\_\_, 2012.

Tricia L. Robello, L.S. #1246  
 Deputy County Surveyor  
 Sedgwick County, Kansas

\_\_\_\_\_, County Clerk

Kelly B. Arnold

State of Kansas) SS  
 Sedgwick County) This is to certify that this plat has been filed for record in the office of the Register of Deeds, this \_\_\_\_\_ day of \_\_\_\_\_, 2012 at \_\_\_\_\_ o'clock \_\_\_\_\_ M.; and is duly recorded.

\_\_\_\_\_, Register of Deeds

Bill Meek

State of Kansas) SS  
 Sedgwick County) The foregoing instrument acknowledged before me, this \_\_\_\_\_ day of \_\_\_\_\_, 2012, by \_\_\_\_\_ of Fidelity Bank, on behalf of the bank.

\_\_\_\_\_, (Title)

This plat approved and all dedications shown hereon accepted by the City Council of the City of Wichita, Kansas, this \_\_\_\_\_ day of \_\_\_\_\_, 2012.

**MEL HAMBELTON 2ND ADDITION**