

**WATER DISTRIBUTION PLANS FOR  
WATERFRONT SIXTH ADDITION  
WICHITA, KANSAS**

**BUBBLE  
MAP**

SHEET TITLE  
**448-90343**  
PROJECT NUMBER

**JAG / JWC / GJA**  
DESIGNED DRAWN CHECKED

ISSUED  
**April 2013**

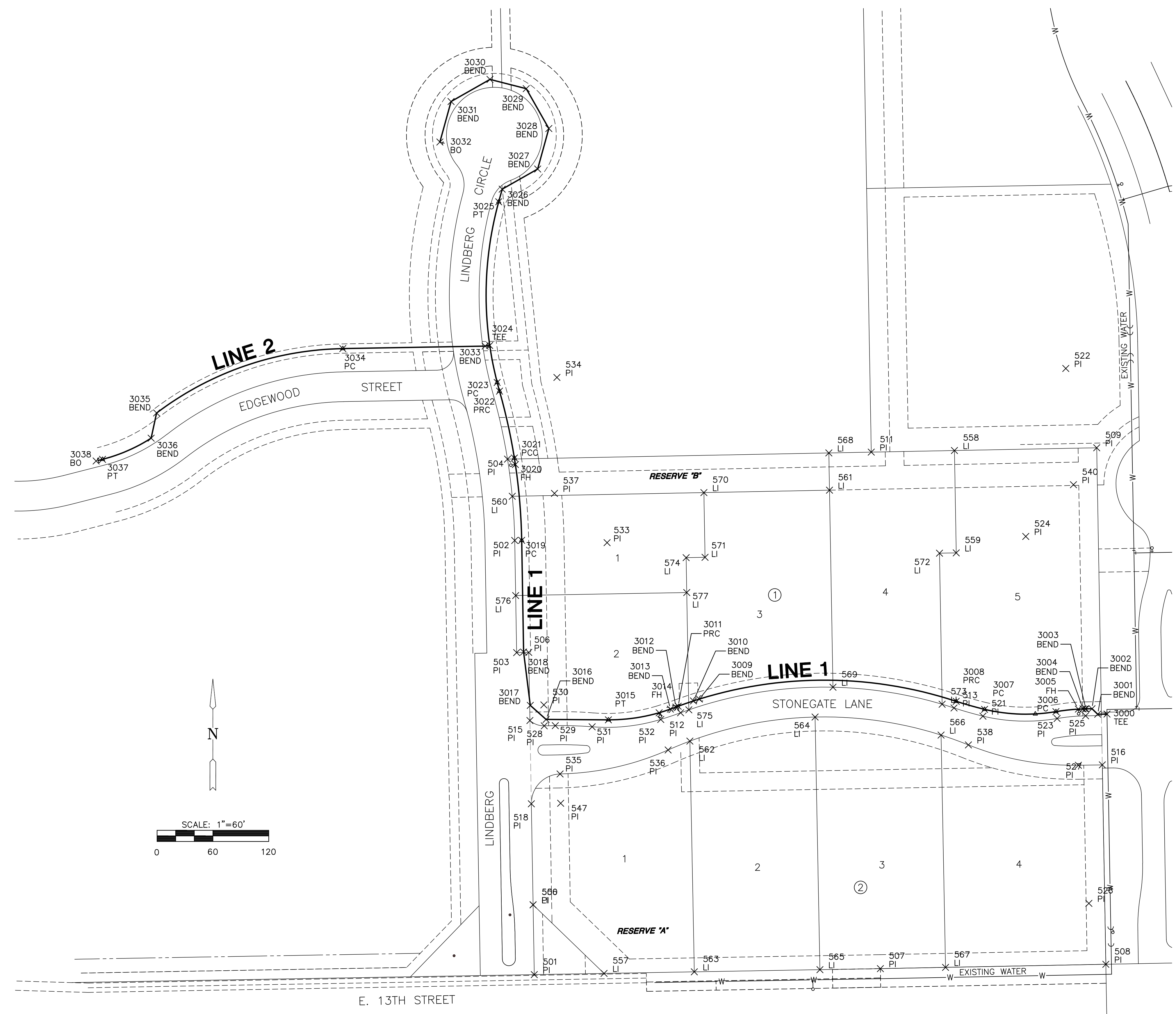
REVISED

SHEET NO.

PLAT POINTS			
Point #	Northing	Easting	Desc.
500	1694557.30	1683275.39	PI
501	1694482.31	1683276.68	PI
502	1694948.71	1683255.65	PI
503	1694828.23	1683257.72	PI
504	1695036.10	1683247.90	PI
505	1694938.10	1682639.74	PI
506	1694828.45	1683270.72	PI
507	1694488.72	1683648.60	PI
508	1694493.39	1683890.87	PI
509	1695048.30	1683881.08	PI
510	1694760.62	1683886.15	PI
511	1695043.63	1683638.81	PI
512	1694763.58	1683433.89	PI
513	1694768.77	1683727.73	PI
514	1694345.14	1683588.24	PI
515	1694755.29	1683271.98	PI
516	1694707.63	1683887.09	PI
517	1694740.13	1683886.51	PI
518	1694665.81	1683273.52	PI
519	1694728.13	1683886.73	PI
520	1694727.67	1683861.01	PI
521	1694759.97	1683758.80	PI
522	1695133.51	1683847.83	PI
523	1694757.44	1683838.48	PI
524	1694953.06	1683804.82	PI
525	1694760.32	1683869.10	PI
526	1694558.85	1683872.66	PI
527	1694707.18	1683861.38	PI
528	1694749.56	1683287.38	PI
529	1694749.77	1683299.26	PI
530	1694772.05	1683286.99	PI
531	1694748.51	1683338.84	PI
532	1694756.43	1683412.59	PI
533	1694946.36	1683354.91	PI
534	1695123.86	1683301.00	PI
535	1694697.85	1683304.39	PI
536	1694723.64	1683420.51	PI
537	1694999.29	1683298.36	PI
538	1694729.05	1683743.20	PI
539	1694345.14	1683588.24	PI
540	1695008.63	1683856.06	PI
541	1694736.28	1683835.93	PI
542	1694737.23	1683841.96	PI
543	1694728.33	1683836.22	PI
544	1694739.83	1683869.46	PI
545	1694732.32	1683836.50	PI
546	1694348.33	1683306.34	PI
547	1694666.36	1683305.02	PI
548	1694729.03	1683285.93	PI
549	1694718.03	1683286.13	PI
550	1694723.53	1683286.03	PI
551	1694718.33	1683303.31	PI
552	1694720.45	1683333.09	PI
553	1694728.40	1683332.87	PI
554	1694724.41	1683332.60	PI
555	1694729.27	1683299.62	PI
556	1694557.30	1683275.39	LI
557	1694483.60	1683351.67	LI
558	1695045.36	1683728.19	LI
559	1694935.37	1683730.14	LI

PLAT POINTS			
Point #	Northing	Easting	Desc.
560	1694996.19	1683253.00	LI
561	1695002.76	1683593.93	LI
562	1694733.16	1683443.88	LI
563	1694485.28	1683448.66	LI
564	1694759.03	1683578.41	LI
565	1694487.60	1683583.64	LI
566	1694739.64	1683713.81	LI
567	1694490.07	1683718.62	LI
568	1695042.75	1683593.22	LI
569	1694791.04	1683597.66	LI
570	1695000.16	1683458.95	LI
571	1694930.61	1683460.18	LI
572	1694935.05	1683712.11	LI
573	1694772.76	1683714.97	LI
574	1694930.25	1683439.87	LI
575	1694766.75	1683442.76	LI
576	1694889.53	1683256.67	LI
577	1694892.77	1683440.54	LI

WATER POINTS			
Point #	Northing	Easting	Desc.
3000	1694762.21	1683892.12	TEE
3001	1694762.03	1683882.13	BEND
3002	1694767.95	1683876.00	BEND
3003	1694767.83	1683869.39	BEND
3004	1694767.76	1683866.38	BEND
3005	1694767.55	1683861.35	FH
3006	1694764.83	1683837.21	PC
3007	1694767.26	1683760.54	PC
3008	1694775.89	1683730.08	PRC
3009	1694778.34	1683454.05	BEND
3010	1694776.33	1683447.72	BEND
3011	1694770.62	1683431.30	PRC
3012	1694769.72	1683428.85	BEND
3013	1694767.53	1683422.93	BEND
3014	1694763.59	1683410.86	FH
3015	1694756.01	1683356.35	PT
3016	1694756.45	1683289.36	BEND
3017	1694771.53	1683272.39	BEND
3018	1694828.87	1683265.21	BEND
3019	1694948.84	1683263.15	PC
3020	1695030.31	1683256.39	FH
3021	1695037.29	1683255.30	PCC
3022	1695109.14	1683239.32	PRC
3023	1695118.47	1683236.79	PC
3024	1695158.22	1683228.80	TEE
3025	1695312.57	1683238.44	PT
3026	1695326.12	1683242.18	BEND
3027	1695347.76	1683280.32	BEND
3028	1695391.29	1683292.34	BEND
3029	1695434.10	1683268.04	BEND
3030	1695444.04	1683229.09	BEND
3031	1695420.29	1683187.24	BO
3032	1695376.76	1683175.23	BEND
3033	1695157.50	1683223.85	BEND
3034	1695154.87	1683070.91	PC
3035	1695085.69	1682870.82	BEND
3036	1695058.61	1682864.95	BEND
3037	1695035.86	1682812.71	PT
3038	1695034.11	1682805.83	BO



PLOTTED: Wednesday, May 01, 2013 @ 10:34AM  
 H:\CIVIL\020114\6TH ADD\CIVIL3D\5-CIVIL\CAO\WFR\020114-BUBBLE.DWG