

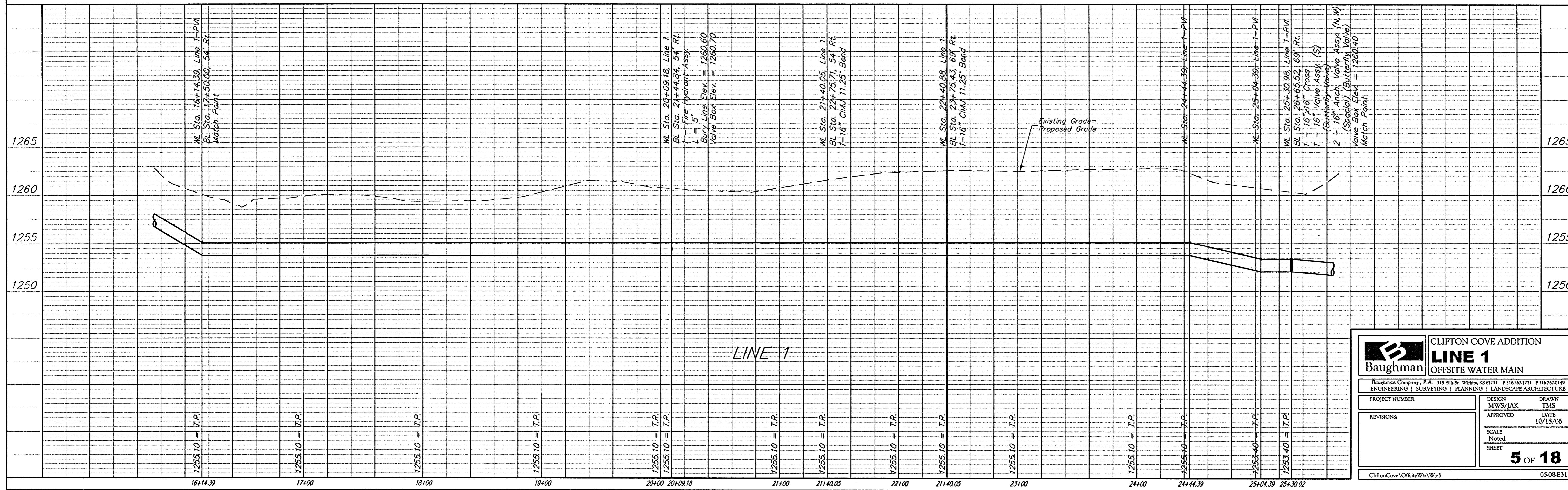
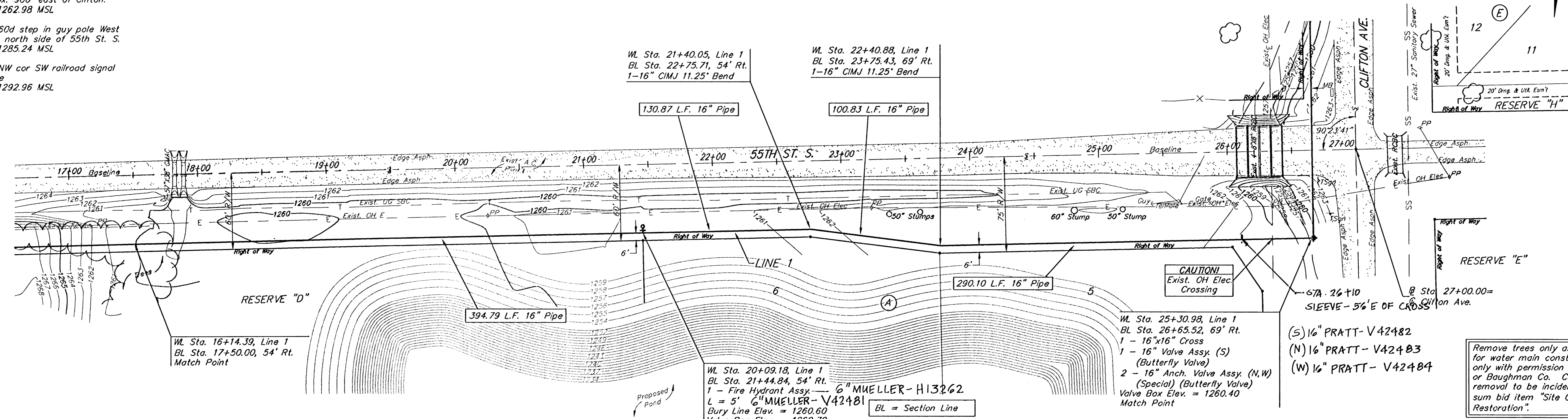
BENCHMARKS:
 BM #1: City of Wichita Benchmark
 Disc, SW corner of RCBC East of
 55th & Clifton.
 Elev. = 1263.29 MSL

BM #2: "□" cut on north headwall
 of HECMP's, North side of 55th St.
 S., Approx. 900' east of Clifton.
 Elev. = 1262.98 MSL

BM #3: 60d step in guy pole West
 of bridge north side of 55th St. S.
 Elev. = 1285.24 MSL

BM #4: NW cor SW railroad signal
 pole base
 Elev. = 1292.96 MSL

Scale: 1" = 40' Horizontal
 1" = 5' Vertical
 • = Iron



Baughman		CLIFTON COVE ADDITION	
		LINE 1	
		OFFSITE WATER MAIN	
Baughman Company, P.A. 315 Ellis St. Wichita, KS 67211 F 316-262-7711 F 316-262-0149			
ENGINEERING SURVEYING PLANNING LANDSCAPE ARCHITECTURE			
PROJECT NUMBER	DESIGN	DRAWN	
	MWS/JAK	TMS	
REVISIONS	APPROVED	DATE	
		10/18/06	
SCALE		SHEET	
Noted		5 OF 18	
CliftonCove\Offsite\Wm3		05-08-E317	