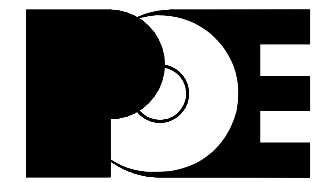
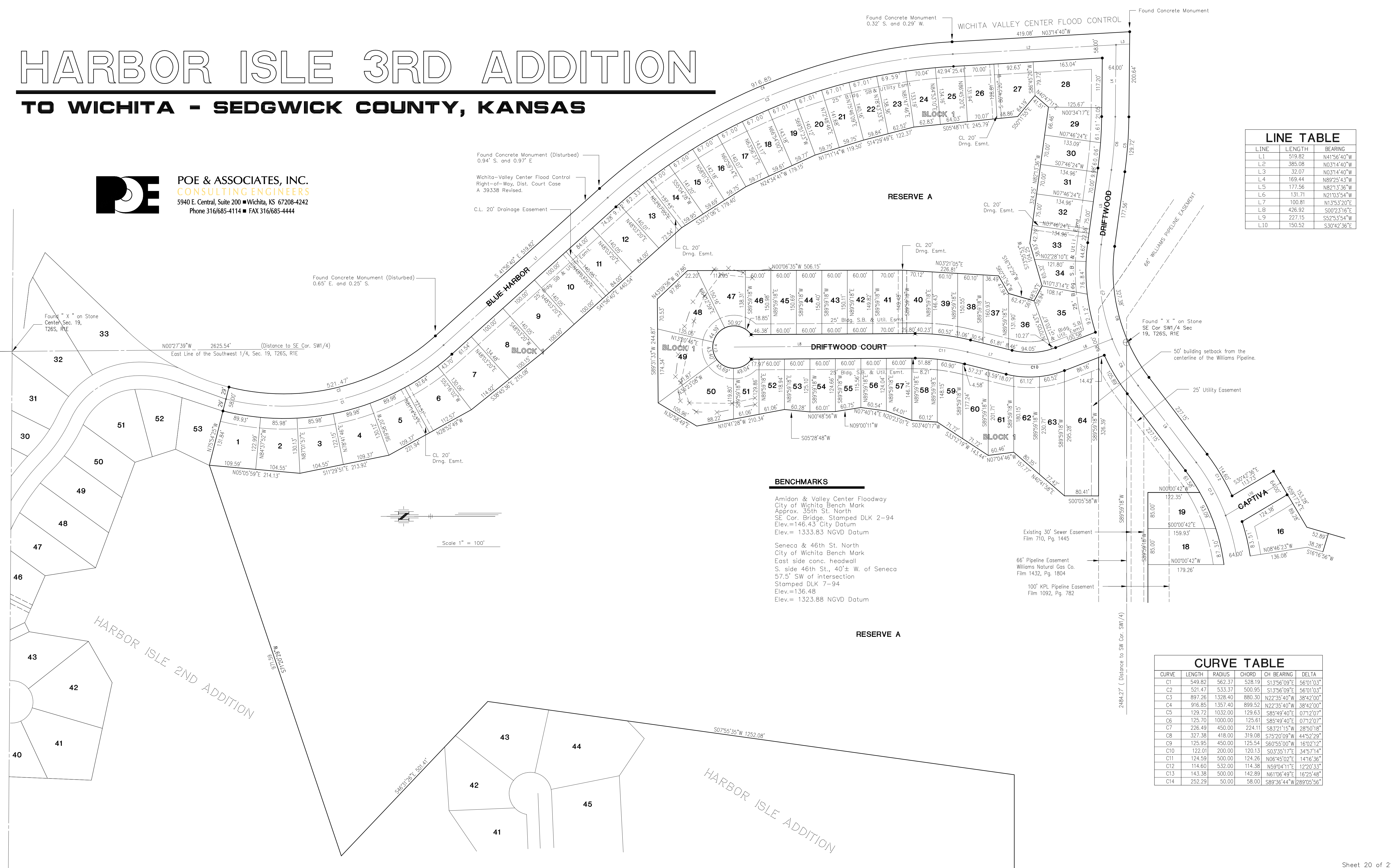


# HARBOR ISLE 3RD ADDITION

## TO WICHITA - SEDGWICK COUNTY, KANSAS



**POE & ASSOCIATES, INC.**  
**CONSULTING ENGINEERS**  
 5940 E. Central, Suite 200 ■ Wichita, KS 67208-4242  
 Phone 316/685-4114 ■ FAX 316/685-4444



LINE TABLE		
LINE	LENGTH	BEARING
L1	519.82	N41°56'40"W
L2	385.08	N03°14'40"W
L3	32.07	N03°14'40"W
L4	169.44	N89°25'43"W
L5	177.56	N82°13'36"W
L6	131.71	N21°03'54"W
L7	100.81	N13°53'20"E
L8	426.92	S00°23'16"W
L9	227.15	S52°53'54"W
L10	150.52	S30°42'36"E

### BENCHMARKS

Amidon & Valley Center Floodway  
 City of Wichita Bench Mark  
 Approx. 35th St. North  
 SE Cor. Bridge, Stamped DLK 2-94  
 Elev.=146.43 City Datum  
 Elev.= 1333.83 NGVD Datum

Seneca & 46th St. North  
 City of Wichita Bench Mark  
 East side conc. headwall  
 S. side 46th St., 40± W. of Seneca  
 57.5' SW of intersection  
 Stamped DLK 7-94  
 Elev.=136.48  
 Elev.= 1323.88 NGVD Datum

CURVE TABLE						
CURVE	LENGTH	RADIUS	CHORD	CH BEARING	DELTA	
C1	549.82	562.37	528.19	S13°56'09"E	56°01'03"	
C2	521.47	533.37	500.95	S13°56'09"E	56°01'03"	
C3	897.26	1328.40	880.30	N22°35'40"W	38°42'00"	
C4	916.85	1357.40	899.52	N22°35'40"W	38°42'00"	
C5	129.72	1032.00	129.63	S85°49'40"E	07°12'07"	
C6	125.70	1000.00	125.61	S85°49'40"E	07°12'07"	
C7	226.49	450.00	224.11	S83°21'15"W	28°50'18"	
C8	327.38	418.00	319.08	S75°20'09"W	44°52'29"	
C9	125.95	450.00	125.54	S60°55'00"W	16°02'12"	
C10	122.01	200.00	120.13	S03°35'17"E	34°57'14"	
C11	124.59	500.00	124.26	N06°45'02"E	14°16'36"	
C12	114.60	532.00	114.38	N59°04'11"E	12°20'33"	
C13	143.38	500.00	142.89	N61°06'49"E	16°25'48"	
C14	252.29	50.00	58.00	S89°36'44"W	289°05'56"	