

Terrace

Pershing

Dellrose

Oliver

MH 5748-397  
815 N. Dellrose  
Approx depth = 10.8 ft

Install 255 lf of 8" Cured-in-Place Liner  
from MH 5748-397 to MH 5748-396

MH 5748-396  
656 N. Pershing  
Approx depth = 12.0 ft

810

835

187' PVC

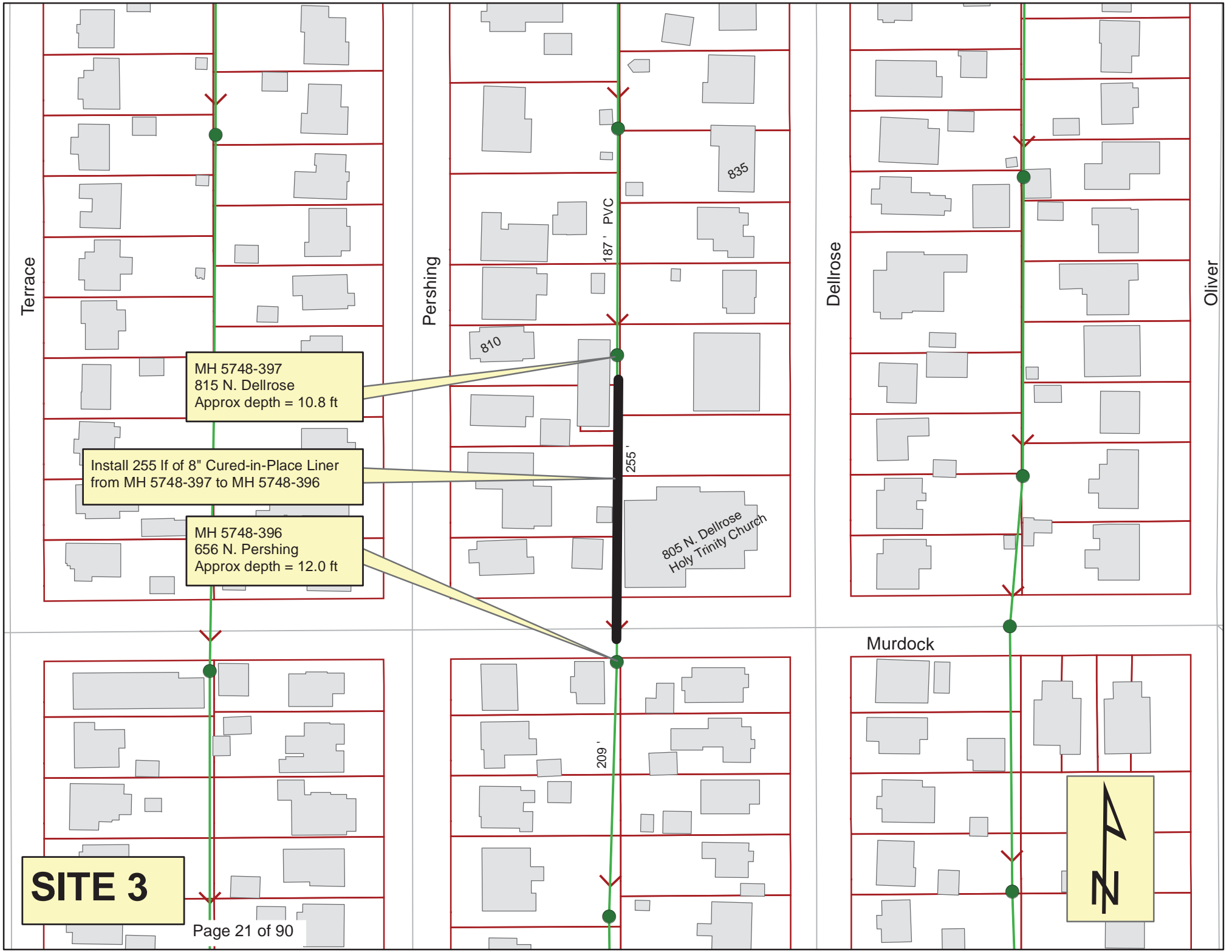
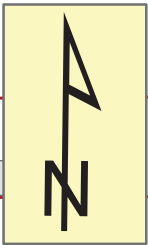
255'

805 N. Dellrose  
Holy Trinity Church

209'

Murdock

**SITE 3**



N PERSHING AVE

810

N DELLROSE AVE

805 N Dellrose  
(church)

E MURDOCK AVE





# Video Inspection Master Report

3/5/2013

4:20 PM

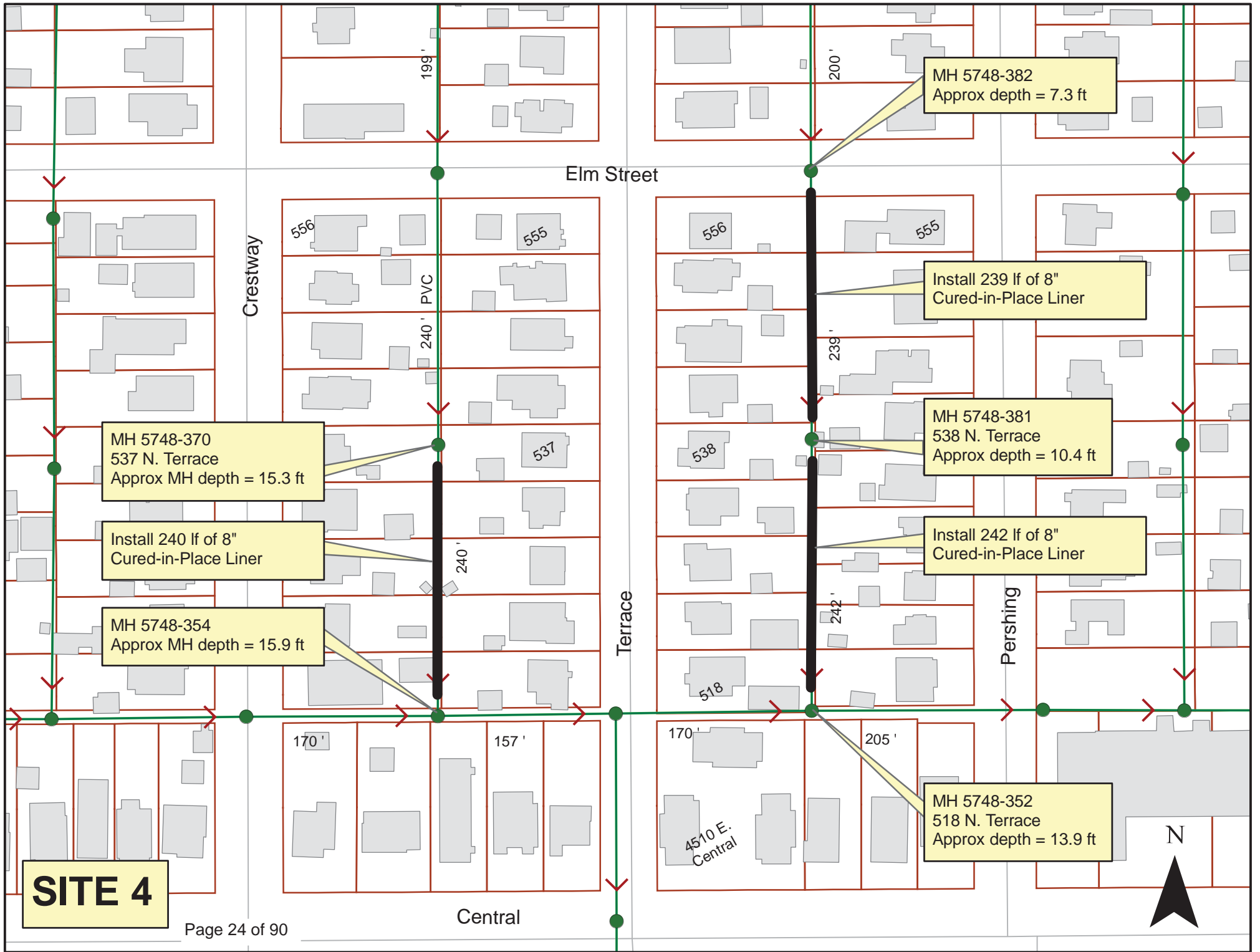
US Structure: 5748-397                      810 N PERSHING AVE                      Date Insp: 9/16/2010                      Basin: E04E  
 DS Structure: 5748-396                      656 N PERSHING AVE                      Dir Televised: Upstream To Downstream

**Pipe Information**

Shape: Round                      Length Status:                      Project No. : C-047  
 Dia/Ht: 8                      Material: VCP                      Index:  
 Length: 254.4                      Slope: 0.299                      Surface:

Obs. #	VTR Counter	Distance	Location	Description	Rating	Ratings				
						Obsrvd (gpm)	Est. (gpm)	Struct Clean	Remain (gpm)	
1		0.0	5748-397	US Manhole	1		0.000	0	0	0.000
2		16.5		Wye Service	1		0.000	0	0	0.000
3		19.1		Wye Service	1	815 N DELLROSE				
4		41.2		PVC Break-In Conn	1	808 N PERSHING				
5		44.5		Wye Service	1		0.000	0	0	0.000
6		67.1		Wye Service	1		0.000	0	0	0.000
7		69.9		Wye Service	1		0.000	0	0	0.000
8		92.5		Wye Service	1		0.000	0	0	0.000
9		98.4	Joint	Offset	3		0.010	20	0	0.010
10		100.1		PVC Break-In Conn	2	806 N PERSHING				
11		110.6	Tap packed with roots	Break-In Conn	3	805 N DELLROSE				
12		118.0		Wye Service	1		0.000	0	0	0.000
13		120.6		Wye Service	1		0.000	0	0	0.000
14		145.9	Seal broken / mineral deposits & roots	Wye Service	3		0.000	2	0	0.000
15		146.6	Loose tile stuck here	Debris	4		0.000	0	25	0.000
16		162.1		Sag begins	3		0.000	5	0	0.000
17		165.7	(sag is not a problem) -LML	Sag ends	1		0.000	1	0	0.000
18		166.7	Joint / pipe deflects downward slightly	Offset	4		0.030	60	0	0.030
19		168.4		Wye Service	1		0.000	0	0	0.000
20		170.4		PVC Break-In Conn	2	805 N DELLROSE				
21		171.6		PVC Break-In Conn	1	805 N DELLROSE				
22		193.8		Wye Service	1		0.000	0	0	0.000
23		203.6	Loose Tile	Debris	3		0.000	0	0	0.000
24		227.5	Joint	Offset	3		0.010	20	0	0.010
25		229.9	Joint	Offset	3		0.010	20	0	0.010
26		232.7	Joint	Offset	2		0.000	0	0	0.000
27		251.1		Break-In Conn	1	656 N PERSHING				
28		254.3	5748-396	DS Manhole	2		0.000	0	0	0.000
		254.3	Manhole tap for 656 N Pershing / service sticks way into the manhole							

Roots at the joints are not called out on this log. Pipe has infiltration at joints & broken wye seals. -LML



MH 5748-370  
537 N. Terrace  
Approx MH depth = 15.3 ft

Install 240 lf of 8"  
Cured-in-Place Liner

MH 5748-354  
Approx MH depth = 15.9 ft

MH 5748-382  
Approx depth = 7.3 ft

Install 239 lf of 8"  
Cured-in-Place Liner

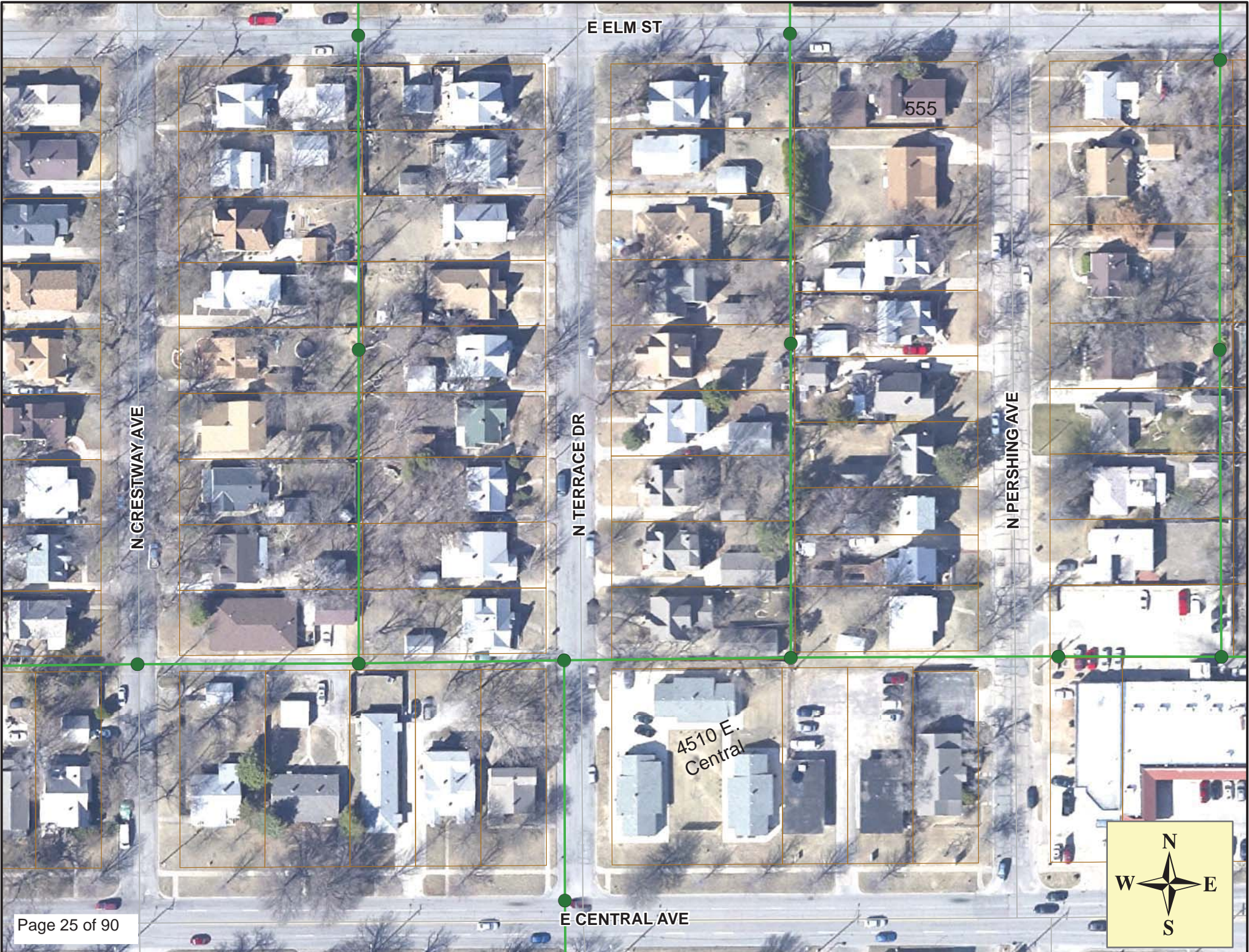
MH 5748-381  
538 N. Terrace  
Approx depth = 10.4 ft

Install 242 lf of 8"  
Cured-in-Place Liner

MH 5748-352  
518 N. Terrace  
Approx depth = 13.9 ft

**SITE 4**





E ELM ST

555

N CRESTWAY AVE

N TERRACE DR

N PERSHING AVE

4510 E.  
Central

E CENTRAL AVE



# Television Inspection Master Report

9/2/2011  
2:54 PM

US Structure: 5748-382      556 N TERRACE ST      Date Insp: 2/28/2011      Basin: E04E  
DS Structure: 5748-381      538 N TERRACE DR      Dir Televised:Upstream To Downstream

**Pipe Information**

Project No. : C-027      Dia: 8      Material: VCP      Length: 238.7      Slope: 0.001      Rear Easement

**Obs. VTR**

Obs. #	Counter	Distance	Location	Description	Rating	Obsrvd (gpm)	Ratings			Remain (gpm)
							Est. (gpm)	Struct	Clean	
1		0.0		5748-382 US Manhole	1	0.000	0	0	0.000	
		3.0		Offset Joint						
2		5.5		Sag begins	1	0.000	1	0	0.000	
3		5.5		Full tile sag (or close to it)	Sag	0.000	25	0	0.000	
4		13.6		camera emerges from sag	Sag	0.000	1	0	0.000	
5		13.6		Sag ends	1	0.000	1	0	0.000	
6		18.3		Roots	1	0.002	1	1	0.002	
7		23.8		Sag begins	1	0.000	1	0	0.000	
8		25.2		70% to 80% sag	Sag	0.000	10	0	0.000	
9		37.2		camera emerges	Sag	0.000	1	0	0.000	
10		37.2		Sag ends	1	0.000	1	0	0.000	
11		37.4		Sealed Off Wye	1	0.000	0	0	0.000	
12		41.1	555 N PERSHING	Wye Service / full of roots	5	0.000	400	0	0.000	
13		18.1		Roots	1	0.002	1	1	0.002	
14		62.8		Mat. Chngs to PVC	1	0.000	0	0	0.000	
15		65.6	556 N TERRACE	PVC Extended Tap	3	0.002	2	0	0.002	
16		66.8		Mat. Chngs back to VCP	1	0.000	0	0	0.000	
THE UPSTREAM 70 LF WAS REPLACED "BY OTHERS" SINCE THIS TELEVISIONING WAS DONE. -LML										
17		91.3	552 N TERRACE	Wye Service	1	0.000	0	0	0.000	
18		93.9		Sealed Off Wye	1	0.000	0	0	0.000	
19		117.5		Sealed Off Wye	1	0.000	0	0	0.000	
20		119.9		Sealed Off Wye	1	0.000	0	0	0.000	
21		143.9		Sealed Off Wye	1	0.000	0	0	0.000	
22		146.3	553 N PERSHING	Wye Service	1	0.000	0	0	0.000	
23		165.0	548 N TERRACE	Break-In Conn	1	0.001	0	0	0.001	
24		169.3		Sealed Off Wye	1	0.000	0	0	0.000	
25		172.5		Sealed Off Wye	1	0.000	0	0	0.000	
26		177.3	547 N PERSHING	Break-In Conn	1	0.001	0	0	0.001	
27		195.2	544 N TERRACE	Break-In Conn	2	0.002	0	0	0.002	
28		198.3		Sealed Off Wye	1	0.000	0	0	0.000	
29		222.7		Sealed Off Wye	1	0.000	0	0	0.000	
30		225.7	541 N PERSHING / roots	Wye Service	5	0.000	400	0	0.000	
44		236.2		Crack-Radial	3	0.004	5	0	0.004	
31		238.8		5748-381 DS Manhole	1	0.000	0	0	0.000	

There are other smaller sags in the line but not as extreme as the upstream 70 lf. -LML

# Television Inspection Master Report

9/2/2011

2:54 PM

US Structure: 5748-381      538 N TERRACE DR      Date Insp: 2/28/2011      Basin: E04E  
 DS Structure: 5748-352      518 N TERRACE DR      Dir Televised: Upstream To Downstream

**Pipe Information**

Shape: Round      Length Status:      Project No. : C-027  
 Dia/Ht: 8      Material: VCP      Index:  
 Length: 240.0      Slope: 0.400      Surface: Rear Easement

Obs. #	VTR Counter	Distance	Location	Description	Rating	Obsrvd (gpm)	Ratings			Remain (gpm)
							Est. (gpm)	Struct	Clean	
1		0.0		5748-381 US Manhole	1	0.000	0	0	0.000	
2		9.8	538 N TERRACE	Wye Service / roots	3	0.000	2	0	0.000	
3		13.0		Sealed Off Wye	1	0.000	0	0	0.000	
4		36.6		Sealed Off Wye	1	0.000	0	0	0.000	
5		37.3	534 N TERRACE	Break-In Conn	1	0.001	0	0	0.001	
6		39.2	535 N PERSHING	Wye Service	1	0.000	0	0	0.000	
7		63.1		Sealed Off Wye	1	0.000	0	0	0.000	
8		65.5		Sealed Off Wye	1	0.000	0	0	0.000	
9		61.3		Sag begins	2	0.000	2	0	0.000	
10		61.9		Sag	4	0.000	10	0	0.000	
11		71.7	(water is barely over the camera lens)	Sag	1	0.000	1	0	0.000	
12		71.7		Sag ends	1	0.000	1	0	0.000	
13		89.3		Sealed Off Wye	1	0.000	0	0	0.000	
14		91.8	527 N PERSHING	Wye Service	2	0.000	0	0	0.000	
15		114.1	528 N TERRACE	Break-In Conn / roots	4	0.008	60	0	0.008	
16		118.1		Sealed Off Wye	1	0.000	0	0	0.000	
17		142.1		Sealed Off Wye	1	0.000	0	0	0.000	
18		144.5		Sealed Off Wye / seal broken / roots entering	5	0.000	0	0	0.000	
19		146.4	525 N PERSHING	Break-In Conn / roots	3	(tap is rough & jagged clay)				
20		168.5	524 N TERRACE	Wye Service	1	0.000	0	0	0.000	
21		171.0		Sealed Off Wye	1	0.000	0	0	0.000	
22		194.8		Sealed Off Wye	1	0.000	0	0	0.000	
23		197.4		Sealed Off Wye	1	0.000	0	0	0.000	
24		221.0	518 N TERRACE	Wye Service / roots	3	0.000	2	0	0.000	
25		223.8		Sealed Off Wye	1	0.000	0	0	0.000	
26		149.4		Sag begins	1	0.000	1	0	0.000	
27		157.0	(water was barely over the camera lens)	Sag ends	1	0.000	1	0	0.000	
29		190.7		Sag begins	1	0.000	1	0	0.000	
30		201.1	(water was barely over the camera lens)	Sag ends	4	0.000	10	0	0.000	
31		201.1		Sag begins	4	0.000	10	0	0.000	
33		209.4	(water was barely over the camera lens)	Sag ends	1	0.000	1	0	0.000	
34		242.9		DS Manhole 5748-352	1	(small inside drop at manhole)				

# Television Inspection Master Report

9/2/2011

2:54 PM

US Structure: 5748-370                      537 N TERRACE DR                      Date Insp: 4/19/2010                      Basin: E04E  
 DS Structure: 5748-354                      508 N CRESTWAY AVE                      Dir Televised: Upstream To Downstream

**Pipe Information**

Project No. : C-011                      Dia: 8                      Material: VCP                      Length: 240.0                      Slope: 0.400

Obs. #	VTR Counter	Distance	Location	Description	Rating	Obsrvd (gpm)	Ratings			Remain (gpm)
							Est. (gpm)	Struct	Clean	
1		0.0		5748-354 DS Manhole	TV AGAINST THE FLOW					
2		16.4		Roots	3	0.008	5	8	0.008	
3		18.4	510 NORTH CRESTWAY	Wye Service	4	(service has heavy roots that hang into main)				
4		21.2		Sealed Off Wye	1	0.000	0	0	0.000	
5		31.5		Crack-Horizontal	2	0.002	2	0	0.002	
6		44.1		Sealed Off Wye	1	0.000	0	0	0.000	
7		46.8		Sealed Off Wye	1	0.000	0	0	0.000	
8		49.9		Crack-Radial	3	0.004	5	0	0.004	
9		51.2		Crack-Horizontal	3	0.004	5	0	0.004	
10		63.1		Roots	3	0.008	5	8	0.008	
11		64.5	522 NORTH CRESTWAY	Break-In Conn	3	(roots inside)				
12		64.5		Hole in side of pipe / Broken Pipe	3	0.010	60	0	0.010	
13		67.5		Sealed Off Wye	1	0.000	0	0	0.000	
14		70.3		Sealed Off Wye	1	0.000	0	0	0.000	
15		94.0	522 NORTH CRESTWAY	Break-In Conn	1	(PVC service inside of old VCP tap)				
16		96.3	529 NORTH TERRACE	Break-In Conn	4	(roots inside)				
17		119.5		Sealed Off Wye	1	0.000	0	0	0.000	
18		122.0		Sealed Off Wye	1	0.000	0	0	0.000	
19		125.0		Crack-Horizontal	4	0.008	10	0	0.008	
20		127.6	531 NORTH TERRACE	Break-In Conn	1	(tap in very poor condition)				
21		142.4		Broken Pipe	3	0.010	60	0	0.010	
22		145.5	528 NORTH CRESTWAY	Break-In Conn	1	(poor condition)				
23		147.3		Sealed Off Wye	1	0.000	0	0	0.000	
24		170.8		Sealed Off Wye	1	0.000	0	0	0.000	
25		173.0	537 NORTH TERRACE	Break-In Conn	4	(poor condition)				
26		184.3	532-34 NORTH CRESTWAY	Break-In Conn	4	(poor condition)				
27		196.6		Sealed Off Wye	1	0.000	0	0	0.000	
28		199.4	537 NORTH TERRACE	PVC Break-In Conn	1	0.001	0	0	0.001	
29		222.0		Sealed Off Wye	1	0.000	0	0	0.000	
30		224.8		Sealed Off Wye	1	0.000	0	0	0.000	
31		240.7		5748-370 US Manhole	1	0.000	0	0	0.000	

Roots at joints not called out on the log. Taps are in poor condition. Line has a maintenance history. -LML