

Broadview

Belmont

Elm Street

Crestway

Terrace

Central

MH 5748-363
554 N. Belmont
Approx MH depth = 10.3 ft

MH 5748-362
531 N. Crestway
Approx MH depth = 10.0 ft

MH 5748-356
523 N. Crestway
Approx MH depth = 12.4 ft

Install 441 lf of 8" Cured-in-Place Liner
from MH 5748-363 to MH 5748-356

215'

221'

220'

554

611

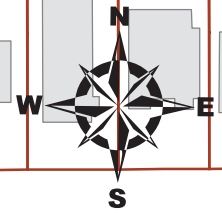
531

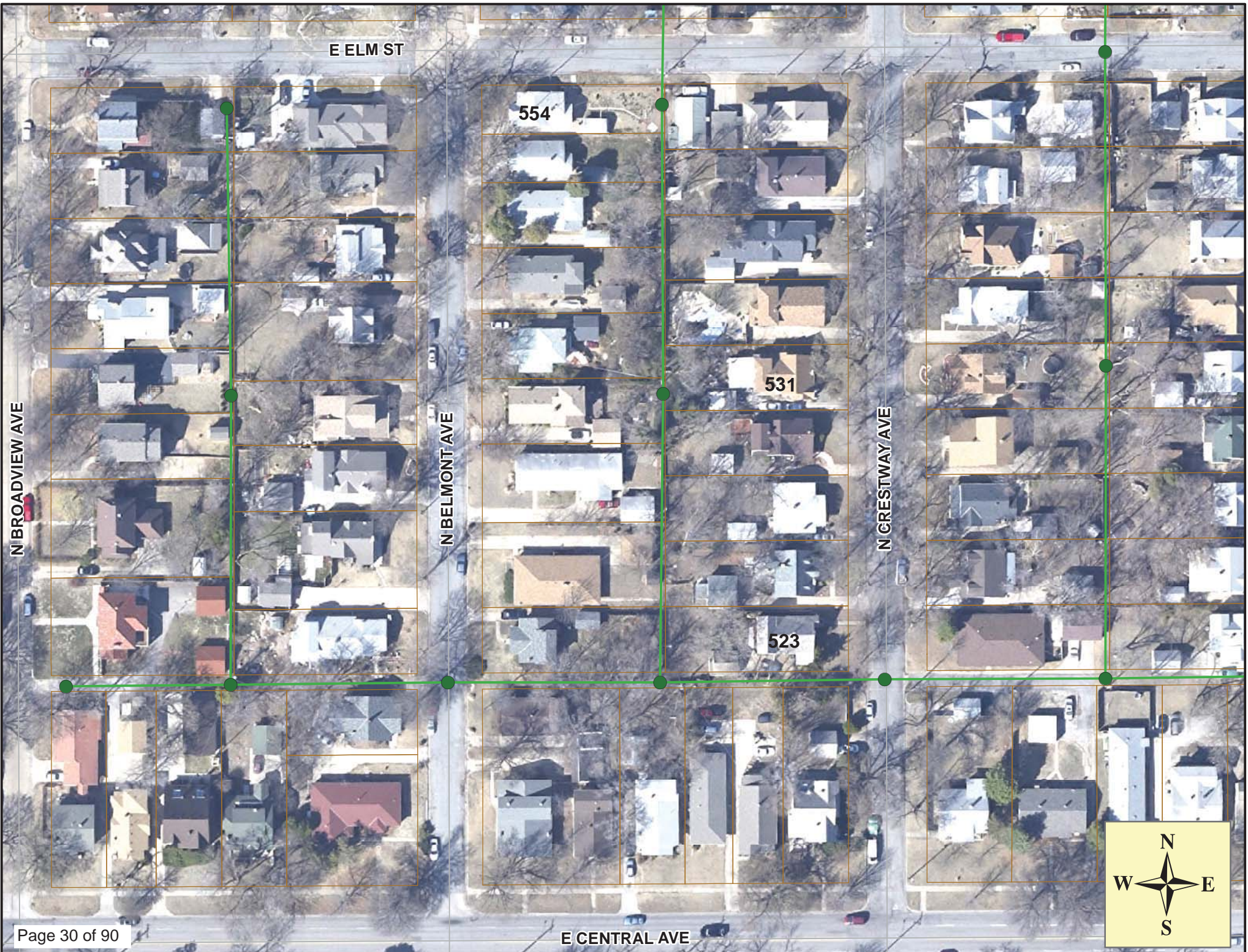
523

164'

169'

SITE 5







Video Inspection Master Report

8/8/2012

7:47 AM

US Structure: 5748-363 554 N BELMONT AVE Date Insp: 6/7/2012 Basin: E04E
 DS Structure: 5748-362 531 CRESTWAY ST Dir Televised: Upstream To Downstream

Pipe Information

Shape: Round Length Status: Project No. : C-012
 Dia/Ht: 8 Material: VCP Index:
 Length: 221.0 Slope: 0.400 Surface:

Obs. #	VTR Counter	Distance	Location	Description	Rating	Ratings			Remain (gpm)
						Obsrvd (gpm)	Est. (gpm)	Struct Clean	
1		0.0		US Manhole 5748-363	1				
2		13.7		Sealed Off Wye	1				
3		16.6		Sealed Off Wye	1				
4		25.3	545 N CRESTWAY	Break-In Conn	1				
5		30.2		Crack-Radial	5				
6		39.6	545 N CRESTWAY	Wye Service	1				
7		42.2	552 N BELMONT / roots	Wye Service / roots	4				
8		61.3	541 N CRESTWAY / protrudes	Break-In Conn	1				
9		65.4		Sealed Off Wye	1				
10		67.8		Sealed Off Wye	1				
11		69.6	550 N BELMONT	Break-In Conn	1				
12		84.2		Crack-Radial	2				
13		90.9	537 N CRESTWAY / roots	Wye Service / roots	2				
14		93.3		Sealed Off Wye	1				
15		104.5		Crack-Radial	2				
16		112.3		Crack-Radial	3				
17		116.6		Sealed Off Wye	1				
18		119.2	546 N BELMONT	Wye Service	2				
19		130.1		Crack-Radial	1				
20		142.1		Sealed Off Wye	1				
21		144.7		Sealed Off Wye	1				
22		147.5	533 N CRESTWAY	Break-In Conn	1				
23		148.1		Crack-Radial	5				
24		167.7		Sealed Off Wye	1				
25		170.2		Sealed Off Wye	1				
26		189.2		Crack-Radial	4				
27		192.3	531 N CRESTWAY	Break-In Conn / full of roots	5				service is packed with roots
28		195.0	538 N BELMONT	Break-In Conn	3				
29		214.8		Crack-Radial	1				
30		218.7		Sealed Off Wye	1				
31		221.2		DS Manhole 5748-362	1				



Video Inspection Master Report

8/8/2012

7:47 AM

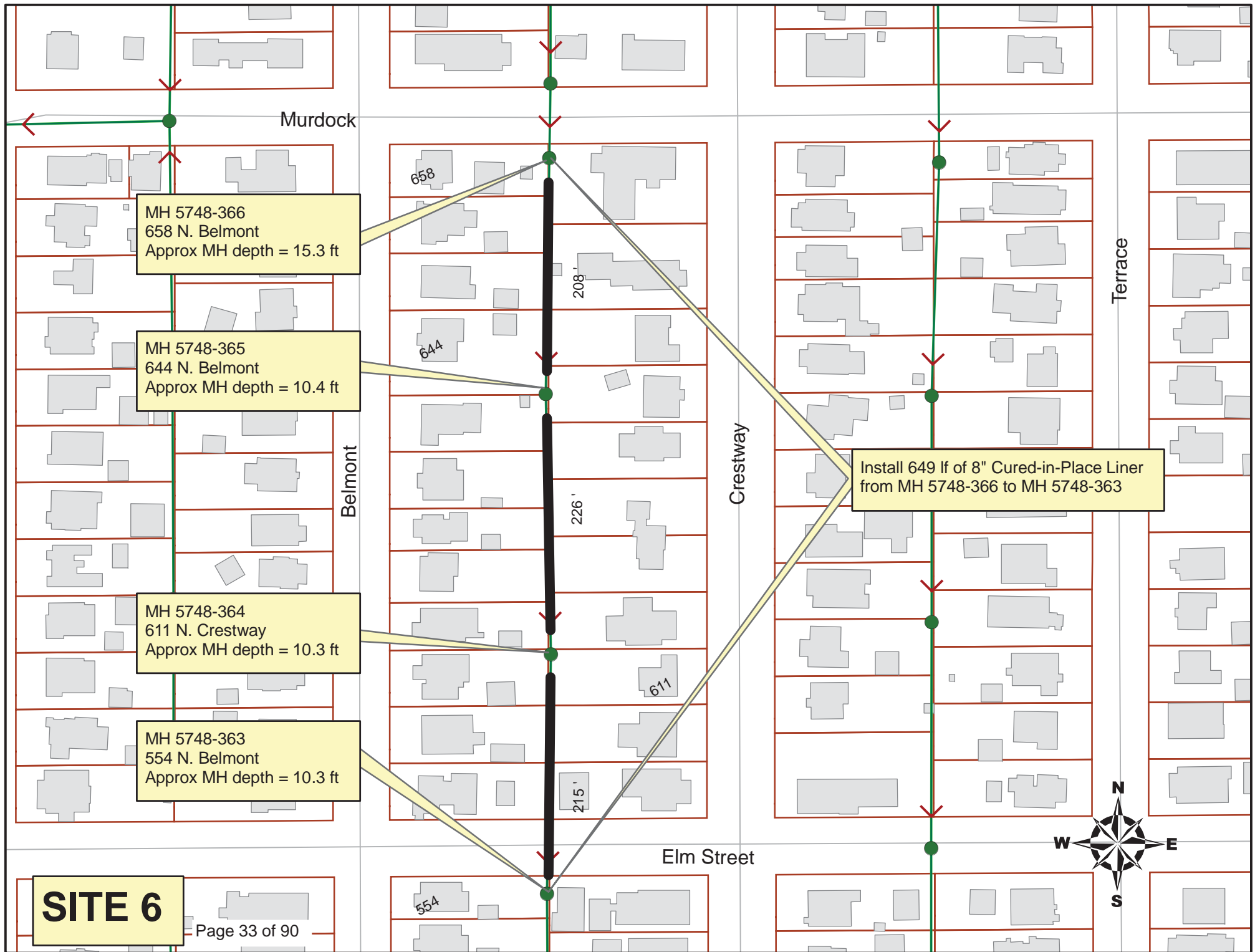
US Structure: 5748-362 531 CRESTWAY ST Date Insp: 6/7/2012 Basin: E04E
 DS Structure: 5748-356 523 N CRESTWAY AVE Dir Televised: Upstream To Downstream

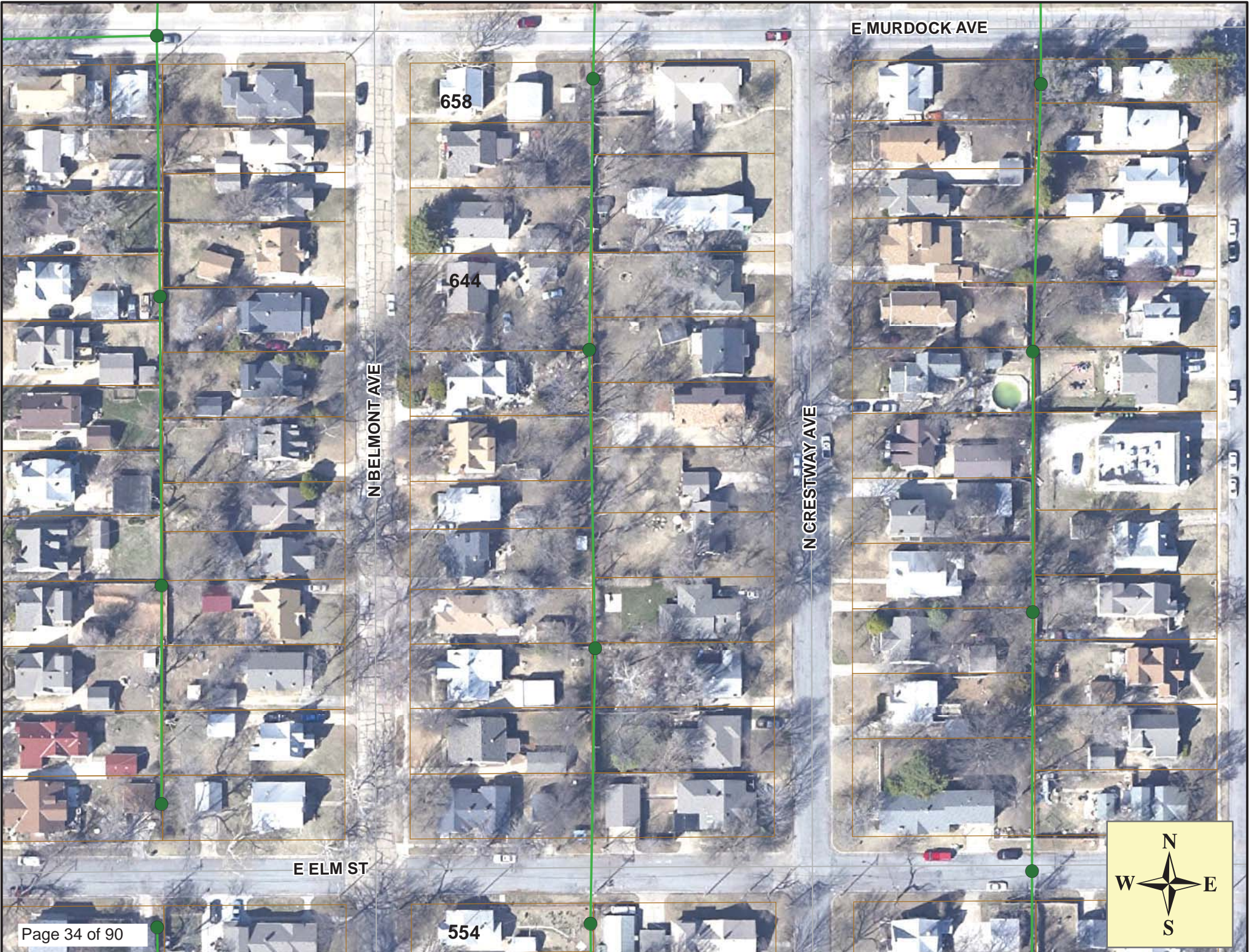
Pipe Information

Project No. : C-012 Dia: 8 Material: VCP Length: 220.0 Slope:0.400

Obs. #	VTR Counter	Distance	Location	Description	Rating	Obsrvd (gpm)	Ratings		Remain (gpm)
							Est. (gpm)	Struct Clean	
1		0.0		5748-362 US Manhole	1				
2		4.2	536 N BELMONT	Break-In Conn	1				
3		22.8		Sealed Off Wye	1				
4		25.4		Sealed Off Wye	1				
5		33.9		Crack-Radial	2				
6		48.0	529 N CRESTWAY	Break-In Conn	3				
7		50.2	526 N BELMONT / roots	Wye Service	5				
8		71.9		Crack-Radial	2				
9		73.6		Sealed Off Wye	1				
10		76.0		Sealed Off Wye	1				
11		83.0	Crown	Grease	1				
12		87.2		Grease	2				
13		87.2		Crack-Radial	3				
14		92.9		Debris / lots of silt	4				
15		98.9	527 N CRESTWAY	Wye Service / full of roots	5				
16		103.0		Sealed Off Wye	1				
17		106.1		Roots	1				
18		108.6		Roots	1				
19		118.6		Roots	1				
20		118.6		Crack-Radial	3				
21		124.1		Crack-Radial	3				
22		125.4	525 N CRESTWAY	Wye Service / possibly broken	5	need to check this			
23		128.6		Sealed Off Wye	1				
24		129.2		Crack-Radial	2				
25		133.2		Crack-Radial	2				
26		150.0		Sealed Off Wye	1				
27		151.0	522 N BELMONT	Break-In Conn	3				
28		153.5		Crack-Radial	3				
29		155.9		Crack-Radial	2				
30		166.1		Crack-Radial	2				
31		175.4		Sealed Off Wye	1				
32		177.5	510 N BELMONT	Break-In Conn	1				
33		186.8		Crack-Radial	3				
34		191.8		Crack-Radial	3				
35		199.8	523 N CRESTWAY	Break-In Conn	3				
36		201.3		Sag / 3/4 tile sag / lens is greasy, hard to see	1				
37		201.4		Sag	4				
38		218.0	(can't see what is broken)	Broken Pipe	5	(can't get into the downstream manhole)			

Sewer Maintenance installed an internal CIPP sleeve repair in the downstream 15 feet of pipe and also excavated to fix the tap at 22' north of the manhole, for 523 Crestway. They say this area is now ready for CIPP installation. No tv available since the repairs were made. -LML





E MURDOCK AVE

658

644

N BELMONT AVE

N CRESTWAY AVE

E ELM ST

554



Video Inspection Master Report

4/26/2013

10:46 AM

US Structure: 5748-366 658 N BELMONT AVE Date Insp: 6/5/2012 Basin: E04E
 DS Structure: 5748-365 644 N BELMONT AVE Dir Televised: Upstream To Downstream

Pipe Information

Shape: Round Length Status: Project No. : C-012
 Dia/Ht: 8 Material: VCP
 Length: 208.0 Slope: 0.500

Obs. #	VTR Counter	Distance	Location	Description	Rating	Ratings			Remain (gpm)
						Obsrvd (gpm)	Est. (gpm)	Struct Clean	
1		0.8	5748-366	US Manhole	1				
2		3.7		Sealed Off Wye	1				
3		4.5	658 N BELMONT	Break-In Conn	3				
4		7.4		Crack-Horizontal	4				
5		12.3		Crack-Radial	3				
6		17.7		Crack-Radial	3				
7		21.8	653 N CRESTWAY	Wye Service	2				
8		22.5		Crack-Radial	2				
9		24.1		Sealed Off Wye	1				
10		25.2		Crack-Radial	3				
11		27.8		Crack-Radial	3				
12		30.2		Crack-Radial	3				
13		35.5		Crack-Radial	1				
14		35.5		Crack-Horizontal	2				
15		37.5		Crack-Radial	3				
16		37.5		Crack-Horizontal	3				
17		40.7		Crack-Radial	4				
18		44.7		Sealed Off Wye	1				
19		45.4		Crack-Radial	3				
20		47.3		Sealed Off Wye	1				
21		53.2		Crack-Radial	3				
22		56.1		Crack-Radial	3				
23		65.9		Crack-Radial	3				
24		70.2		Sealed Off Wye	4				
25		71.0		Crack-Radial	4				
26		72.8	652 N BELMONT	Wye Service	1				
27		84.2		Crack-Radial	4				
28		91.4		Crack-Radial	3				
29		96.0	647 N CRESTWAY	Wye Service	1				
30		98.3		Sealed Off Wye	1				
31		99.3		Crack-Radial	3				
32		102.0		Crack-Radial	3				
33		104.3		Crack-Radial	3				
34		107.0		Crack-Radial	3				
35		109.2		Crack-Radial	3				
36		112.0		Crack-Radial	3				
37		114.6		Crack-Radial	4				

Video Inspection Master Report

4/26/2013

10:46 AM

US Structure: 5748-366 658 N BELMONT AVE Date Insp: 6/5/2012 Basin: E04E
 DS Structure: 5748-365 644 N BELMONT AVE Dir Televised: Upstream To Downstream

38	121.4		Sealed Off Wye	1
39	123.0	646 N BELMONT / PVC	Break-In Conn	1
40	124.8		Crack-Radial	3
41	127.4		Crack-Radial	3
42	137.4		Crack-Radial	4
43	139.9		Crack-Radial	3
44	146.7		Sealed Off Wye	1
45	147.6		Crack-Radial	4
46	149.1		Sealed Off Wye	1
47	165.3		Crack-Radial	4
48	172.0	643 N CRESTWAY	Wye Service	1
49	175.0	644 N BELMONT	Wye Service	5
50	197.2		Sealed Off Wye	1
51	200.1		Sealed Off Wye	1
52	203.4		Broken Pipe	5
53	207.0	5748-365	DS Manhole	1



Video Inspection Master Report

4/26/2013

10:46 AM

US Structure: 5748-365 644 N BELMONT AVE Date Insp: 6/8/2012 Basin: E04E
 DS Structure: 5748-364 611 N CRESTWAY AVE Dir Televised: Upstream To Downstream

Pipe Information

Shape: Round Length Status: Project No. : C-012
 Dia/Ht: 8 Material: VCP
 Length: 226.5 Slope: 0.500

Obs. #	VTR Counter	Distance	Location	Description	Rating	Ratings			Remain (gpm)
						Obsrvd (gpm)	Est. (gpm)	Struct Clean	
1		0.0	5748-365	US Manhole	1				
2		2.1		Crack-Radial	5				
3		10.1		Crack-Radial	3				
4		14.5	637 N CRESTWAY / roots	Wye Service	5				
5		16.8		Sealed Off Wye	1				
6		17.7		Crack-Radial	3				
7		20.3		Crack-Radial	2				
8		23.0		Crack-Radial	3				
9		33.1		Crack-Radial	2				
10		35.4		Crack-Radial	3				
11		38.2		Crack-Radial	5				
12		39.4	631 N CRESTWAY	PVC Break-In Conn	1				
13		41.8	636 N BELMONT	PVC Break-In Conn	1				
14		43.3		Crack-Radial	4				
15		53.6		Crack-Radial	3				
16		58.6		Crack-Radial	3				
17		61.1		Crack-Radial	3				
18		65.4		Sealed Off Wye	1				
19		68.0		Sealed Off Wye	1				
20		68.0		Crack-Horizontal	2				
21		68.9		Crack-Radial	3				
22		81.7		Crack-Radial	2				
23		84.1	630 N BELMONT	Break-In Conn	4				
24		91.0		Sealed Off Wye	1				
25		91.9		Crack-Radial	3				
26		93.2		Sealed Off Wye	1				
27		96.9		Crack-Radial	3				
28		107.0		Crack-Radial	4				
29		109.6		Crack-Radial	3				
30		116.4		Sealed Off Wye	1				
31		118.9	620 N BELMONT	Wye Service	1				
32		118.9		Grease	1				

Video Inspection Master Report

4/26/2013

10:46 AM

US Structure: 5748-365 644 N BELMONT AVE Date Insp: 6/8/2012 Basin: E04E
 DS Structure: 5748-364 611 N CRESTWAY AVE Dir Televised: Upstream To Downstream

33	119.9		Crack-Radial	2
34	125.2		Grease	1
35	129.9		Roots	1
36	141.2	627 N CRESTWAY	Break-In Conn	2
37	144.2		Sealed Off Wye	2
38	145.4	618 N BELMONT / roots	Break-In Conn	5
39	162.9		Crack-Radial	3
40	167.3		Sealed Off Wye	1
41	167.9		Crack-Radial	3
42	169.5		Sealed Off Wye	1
43	170.7		Crack-Radial	4
44	175.7		Crack-Radial	3
45	183.3		Crack-Radial	4
46	186.0		Crack-Radial	3
47	192.8		Sealed Off Wye	1
48	195.5	616 N BELMONT	Wye Service	1
49	196.1		Crack-Radial	4
50	201.3		Crack-Radial	3
51	209.0		Crack-Radial	3
52	211.4		Crack-Radial	4
53	218.0	617 N CRESTWAY	Wye Service	5
54	220.8		Sealed Off Wye	1
55	225.7	5748-364	DS Manhole	1

Video Inspection Master Report

4/26/2013

10:46 AM

US Structure: 5748-364 611 N CRESTWAY AVE Date Insp: 6/8/2012 Basin: E04E
 DS Structure: 5748-363 554 N BELMONT AVE Dir Televised: Upstream To Downstream

Pipe Information

Shape: Round Length Status: Project No. : C-012
 Dia/Ht: 8 Material: VCP
 Length: 215.0 Slope: 0.502

Obs. #	VTR Counter	Distance	Location	Description	Rating	Obsrvd (gpm)	Ratings			Remain (gpm)
							Est. (gpm)	Struct	Clean	
1		0.0		5748-364 US Manhole	1					
2		4.9	612 N BELMONT	Break-In Conn	1					
3		16.3		Crack-Radial	2					
4		18.0		Sealed Off Wye	1					
5		20.7		Sealed Off Wye	1					
6		31.5		Crack-Radial	5					
7		35.2	611 N CRESTWAY	PVC Break-In Conn	1					
8		42.1		Crack-Radial	2					
9		43.4		Sealed Off Wye	1					
10		46.1		Sealed Off Wye	1					
11		52.1		Crack-Radial	2					
12		61.9		Crack-Radial	3					
13		67.3		Crack-Radial	2					
14		68.7	607 N CRESTWAY	PVC Break-In Conn	1					
15		70.0		Crack-Radial	4					
16		70.9	606 N BELMONT / roots	Wye Service	5					
17		74.7		Crack-Radial	5					
18		85.0		Crack-Radial	3					
19		87.3		Crack-Radial	3					
20		94.4		Sealed Off Wye	1					
21		97.2		Sealed Off Wye	1					
22		100.4		Crack-Radial	3					
23		105.3		Crack-Radial	3					
24		108.1		Crack-Radial	3					
25		115.6		Crack-Radial	2					
26		119.8		Sealed Off Wye	1					
27		122.3		Sealed Off Wye	1					
28		122.9		Crack-Radial	5					
29		131.4	604 N BELMONT	Break-In Conn	3					
30		133.4		Roots	1					
31		135.9		Roots	1					

Video Inspection Master Report

4/26/2013

10:46 AM

US Structure: 5748-364 611 N CRESTWAY AVE Date Insp: 6/8/2012 Basin: E04E
 DS Structure: 5748-363 554 N BELMONT AVE Dir Televised: Upstream To Downstream

32	138.4		Roots	1
33	141.1		Roots	2
34	143.5		Roots	3
35	145.3		Sealed Off Wye	1
36	145.3		Broken Pipe	5
37	146.4	601 N CRESTWAY	Break-In Conn	4
38	148.1		Heavy Roots	5
39	150.5		Heavy Roots	4
40	153.1		Roots	3
41	155.7		Heavy Roots	4
42	158.3		Roots	2
43	160.8		Roots	3
44	163.1		Roots	3
45	178.6		Roots	2
46	180.7		Roots	1
47	212.3	554 N BELMONT	Break-In Conn	1
48	214.7	5748-363	DS Manhole	1