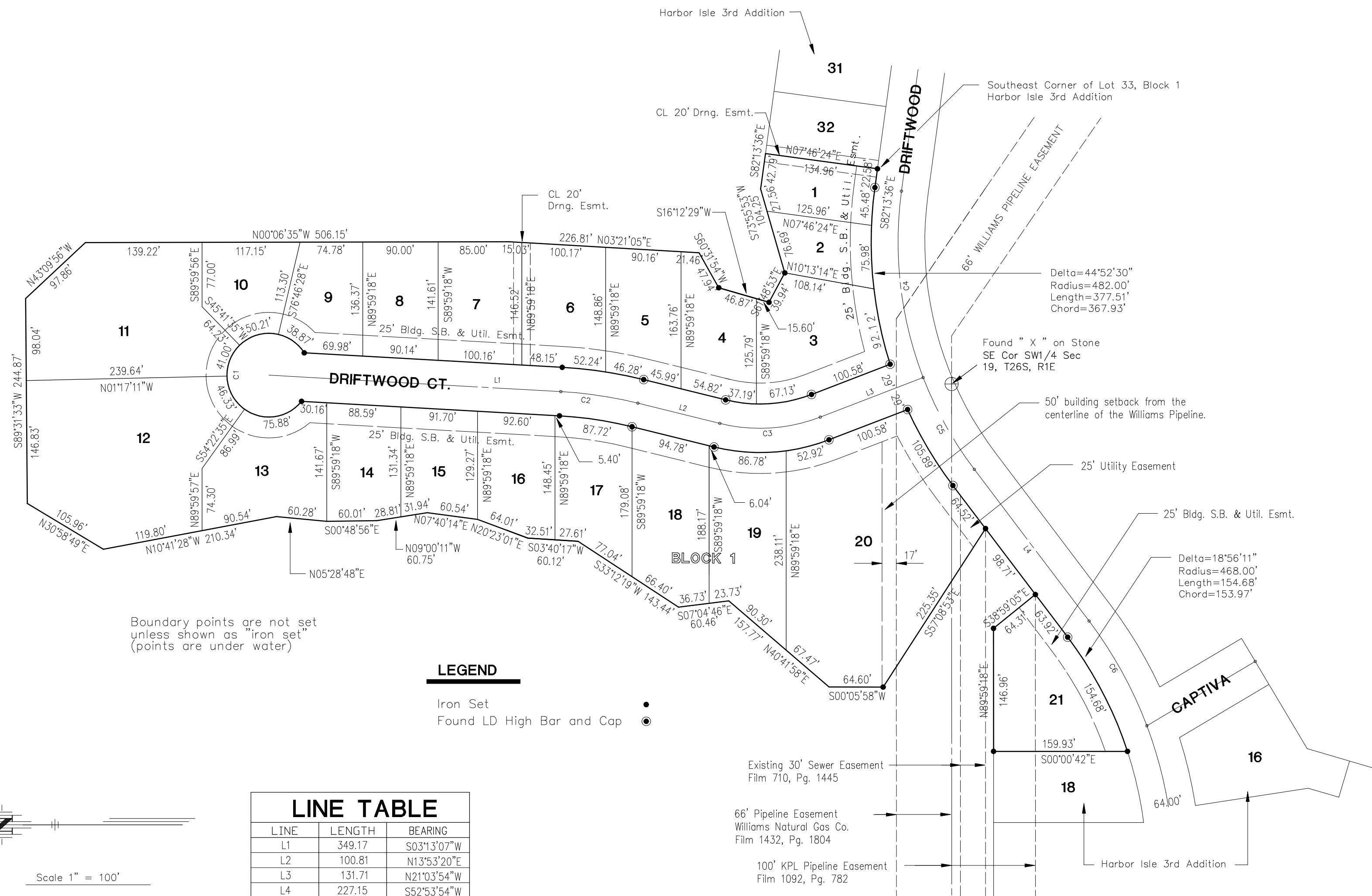


REPLAT OF PART OF HARBOR ISLE 3RD ADDITION TO WICHITA - SEDGWICK COUNTY, KANSAS



STATE OF KANSAS, COUNTY OF SEDGWICK: ss.

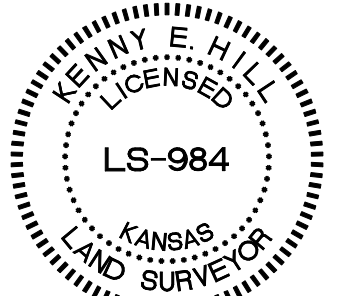
I, Kenny E. Hill, being a duly licensed Land Surveyor in said County and State, do hereby certify that I have been in responsible charge of surveying and platting the "REPLAT OF PART OF HARBOR ISLE 3RD ADDITION" to Wichita, Kansas, being described as follows:

A replat of part of Reserve A, Lots 33 through 64, Block 1 and Lot 19, Block 2, all in Harbor Isle 3rd Addition to Wichita, Sedgwick County, Kansas, described as beginning at the Southeast Corner of said Lot 33, Block 1; thence N82°13'36"W for a distance of 22.58 feet on the North line of Driftwood to a point of curvature; thence on a circular curve to the left having a radius of 482.00 feet and a central angle of 44°52'30" for an arc distance of 377.51 feet to a point of tangency; thence S52°53'54"W for a distance of 227.15 feet to a point of curvature; thence on a circular curve to the right having a radius of 468.00 feet and a central angle of 18°56'11" for an arc distance of 154.68 feet; thence N00°00'42"W for a distance of 159.93 feet; thence N89°59'18"E for a distance of 146.96 feet; thence S38°59'05"E for a distance of 64.31 feet; thence N52°53'54"E for a distance of 98.71 feet; thence N57°08'53"W for a distance of 225.35 feet; thence N00°05'58"E for a distance of 64.60 feet; thence N40°41'58"E for a distance of 157.77 feet; thence N07°04'46"W for a distance of 60.46 feet; thence N33°12'19"E for a distance of 143.44 feet; thence N05°28'48"E for a distance of 60.12 feet; thence N20°23'01"E for a distance of 64.01 feet; thence N07°40'14"E for a distance of 60.54 feet; thence N09°00'11"W for a distance of 60.75 feet; thence N00°48'56"W for a distance of 60.01 feet; thence N05°28'48"E for a distance of 60.28 feet; thence N10°41'28"W for a distance of 210.34 feet; thence N30°58'49"E for a distance of 105.96 feet; thence N89°31'33"E for a distance of 244.87 feet; thence S43°09'56"E for a distance of 97.86 feet; thence S00°06'35"E for a distance of 506.15 feet; thence S03°21'05"W for a distance of 226.81 feet; thence S60°31'54"W for a distance of 47.94 feet; thence S16°12'29"W for a distance of 62.47 feet; thence S61°48'53"E for a distance of 39.94 feet; thence N73°55'53"E for a distance of 104.25 feet; thence S82°13'36"E for a distance of 42.79 feet; thence S07°46'24"W for a distance of 134.96 feet to the point of beginning, containing 9.97 acres more or less.

The accompanying plat is a true and correct exhibit of property surveyed.

Dated this 3rd day of October, 2003.

Poe and Associates of Kansas, Inc.



Kenny E. Hill, L.S. 984
 Vice President

KNOW ALL MEN BY THESE PRESENTS:

That we, the undersigned, have caused the land described in the Surveyor's Certificate to be platted into a street, lots and a block. The street is hereby dedicated to and for the use of the public. Easements are hereby granted as indicated for the construction and maintenance of drainage and utilities. A drainage plan has been developed for this addition. All drainage easements, rights-of-way, or reserves shall remain at established grades or as modified with the approval of the applicable City of County Engineer, and remain unobstructed to allow for the conveyance of stormwater.

The minimum low opening elevation for the homes built in this addition shall be 134.0 (City of Wichita Datum) or 1321.4 (NGVD Datum)

Bachman Enterprises, Inc.

Brad C. Bachman, President

STATE OF KANSAS, COUNTY OF SEDGWICK: ss.

This instrument was acknowledged before me on this _____ day of _____, 2003, by Brad C. Bachman, President of Bachman Enterprises, Inc.

Notary Public

My Appointment Expires: _____

This REPLAT OF PART OF HARBOR ISLE 3RD ADDITION to Wichita, Kansas has been submitted to and approved by this WICHITA-SEDGWICK COUNTY METROPOLITAN AREA PLANNING COMMISSION, Wichita, Kansas.

Dated this _____ day of _____, 2003.

Wichita Sedgwick County Metropolitan Area Planning Commission

Ronald L. Marnell, Chairman

Jonh L. Schlegel, Secretary

This plat approved and all dedications shown hereon accepted by the City Council of the City of Wichita, Kansas, this _____ day of _____, 2003.

Carlos Mayans, Mayor

Karen Schofield, City Clerk

Entered on transfer record this, _____ day of _____, 2003.

Don Brace, County Clerk

This is to certify that this instrument was filed for record in the Register of Deeds Office at _____, A.M.-P.M. on the _____ day of _____, 2003.

Bill Meek, Register of Deeds

Linda Kizzire, Chief Deputy

KNOW ALL MEN BY THESE PRESENTS:

That the First National Bank of Centralia, holders of a mortgage on the property described in the Surveyor's Certificate, do hereby consent to the REPLAT OF PART OF HARBOR ISLE 3RD ADDITION.

First National Bank of Centralia

Bruce L. Bachman, President

STATE OF KANSAS, COUNTY OF SEDGWICK: ss.

This instrument was acknowledged before me on this _____ day of _____, 2003, by Bruce L. Bachman, President of the First National Bank of Centralia.

Notary Public

My Appointment Expires: _____

Reviewed in accordance with K.S.A. 58-2005 on this _____ day of _____, 2003

Deputy County Surveyor
 Sedgwick County, Kansas

Tricia L. Robello, L.S. #1246