

Golf Course

Park Land

Belmont

Crestway

Broadview

MH 5748-090
Est. pipe depth = 6.0 ft
Approx MH depth = 10.5

MH 5748-091
Approx depth = 13.0 ft

Install 331 lf of 8" Cured-in-Place Liner
from MH 5748-091 to MH 5748-090

300'

VCP/CIPP

305'

VCP/CIPP

60'

VCP/CIPP

198'

VCP/CIPP

8th Street North

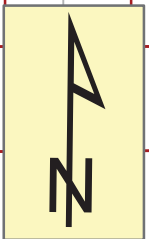
331'

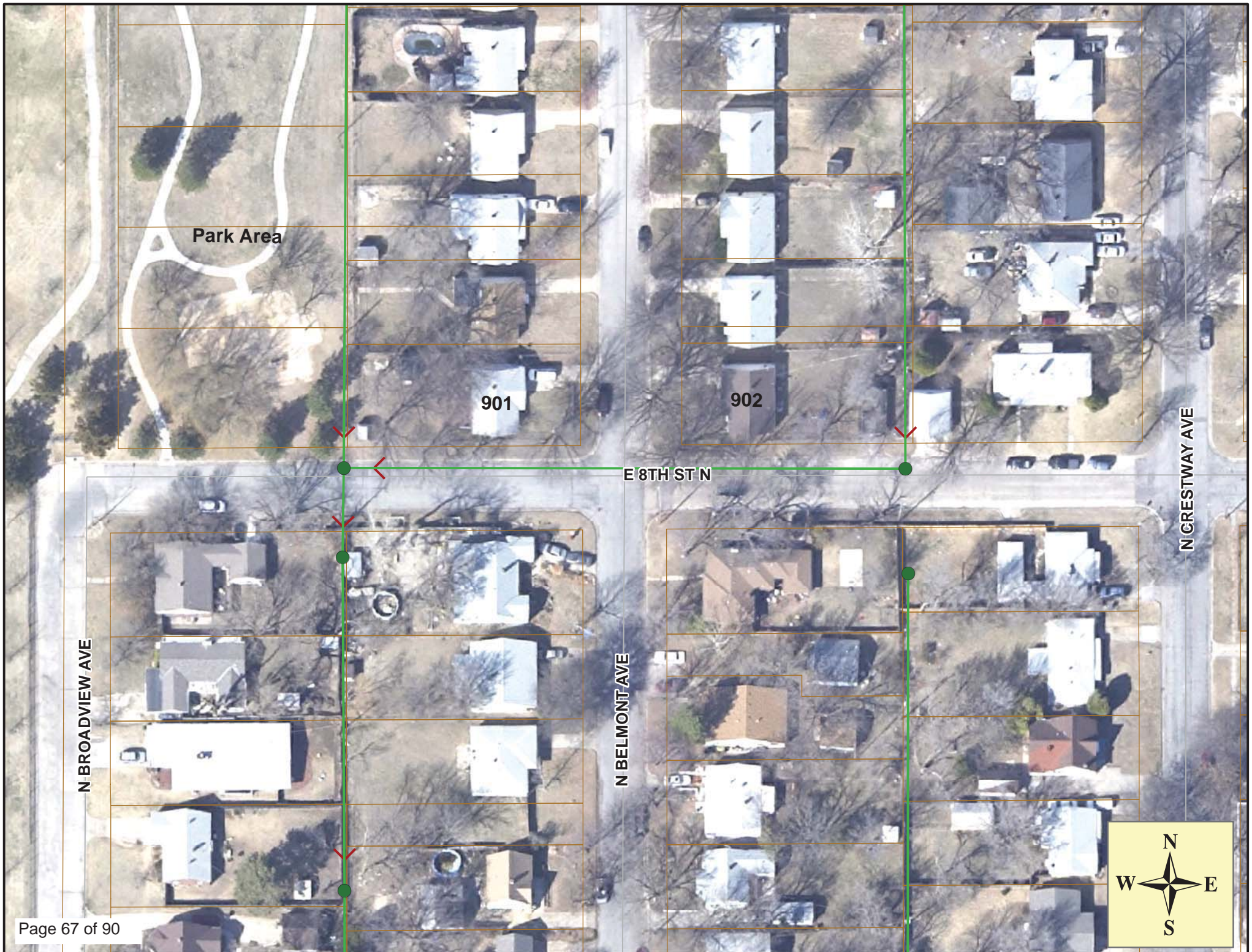
901

902

858

SITE 11





Video Inspection Master Report

4/15/2013

3:20 PM

US Structure: **5748-091**
DS Structure: **5748-090**

4320 E 8TH ST
901 N BELMONT AVE

Date Insp: 10/28/2008
Dir Televised: Up->Down

Basin: EC02A

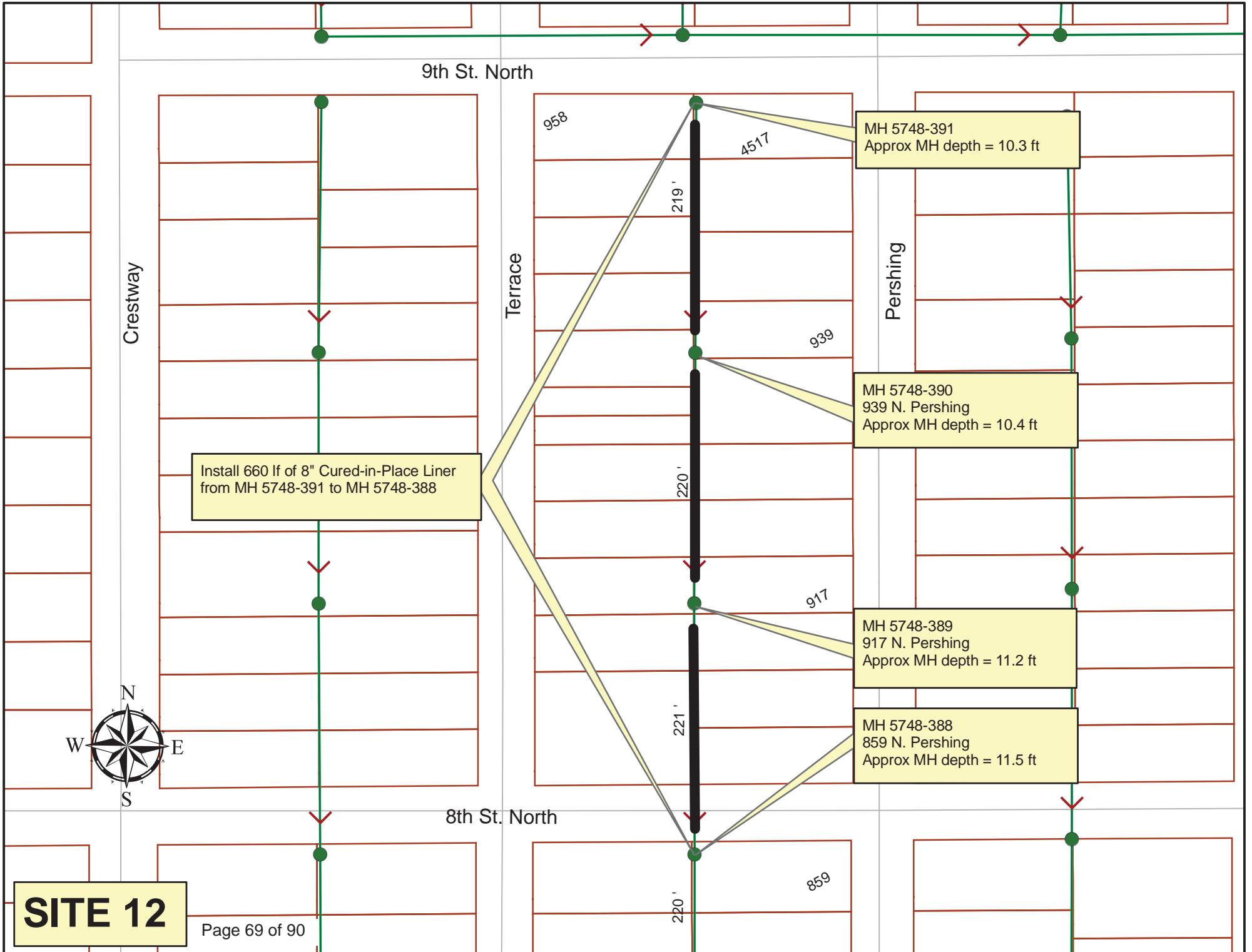
Pipe Information

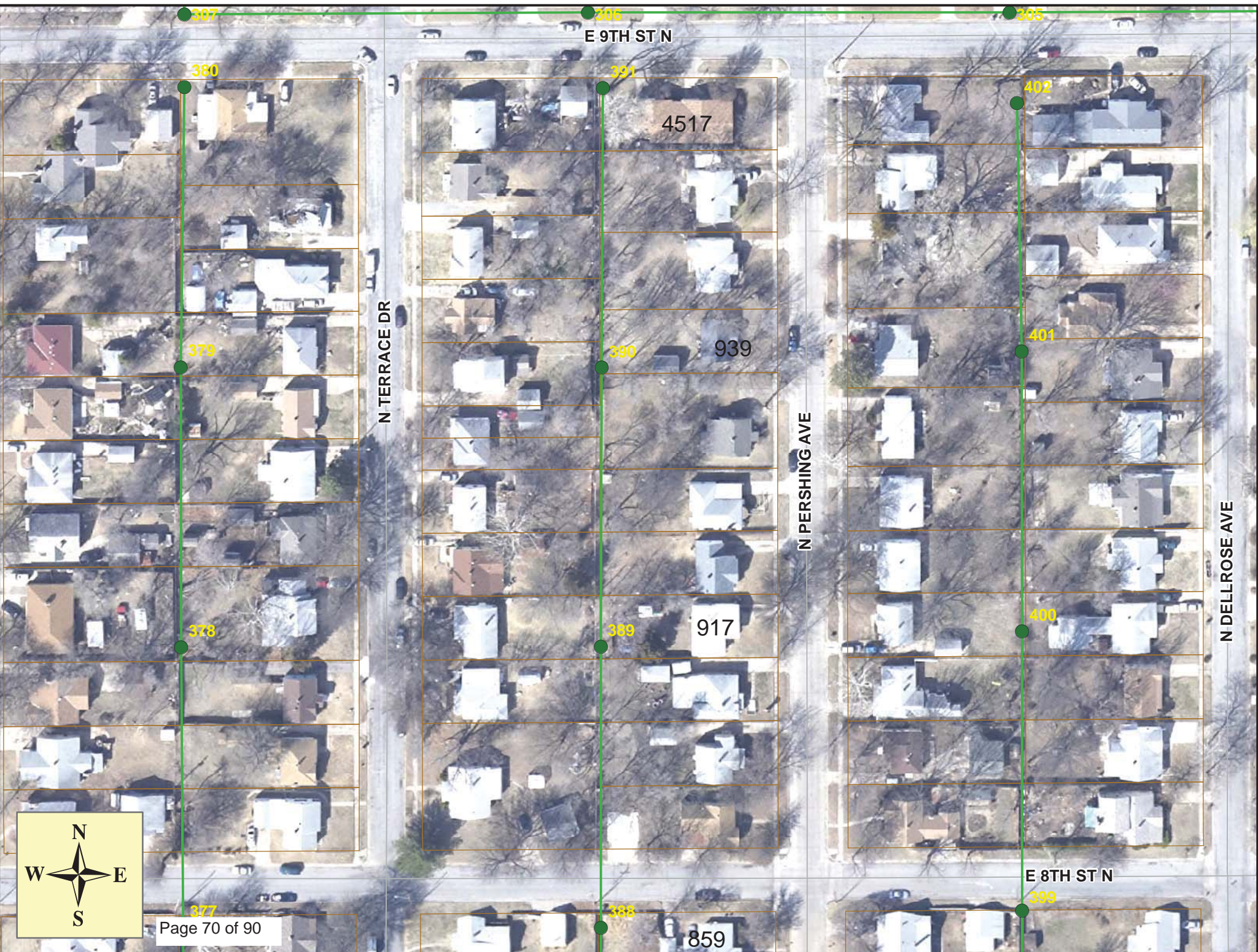
Shape:	Round	Project No. :	F-051
Dia/Ht:	8	Material:	VCP
Length:	331.5	Slope:	0.190

Obs. #	VTR Counter	Distance	Location	Description	Rating	Obsrvd (gpm)	Ratings			Remain (gpm)
							Est. (gpm)	Struct	Clean	
1		0.0	US Manhole	5748-091	1					
2		8.0	Joint /	INFILTRATION	Roots	1	0.002	1	1	0.002
3		29.0	Joint		Roots	1	0.002	1	1	0.002
4		185.9	Joint		Roots	1	0.002	1	1	0.002
5		189.2	Joint		Roots	2	0.004	2	4	0.004
6		195.2	Joint		Roots	1	0.002	1	1	0.002
7		195.7	Lower Left		Broken Pipe	1	0.004	30	0	0.004
8		198.1	Joint		Roots	1	0.002	1	1	0.002
9		228.2	Joint		Roots	1	0.002	1	1	0.002
10		231.3	Joint		Roots	1	0.002	1	1	0.002
11		234.5	Joint		Roots	1	0.002	1	1	0.002
12		237.5	Joint		Roots	2	0.004	2	4	0.004
13		240.7	Joint		Roots	1	0.002	1	1	0.002
14		268.2	Joint		Roots	1	0.002	1	1	0.002
15		273.5	Joint		Roots	1	0.002	1	1	0.002
16		279.7	Joint		Roots	1	0.002	1	1	0.002
17		282.5	Joint		Roots	1	0.002	1	1	0.002
18		285.8	Joint		Roots	1	0.002	1	1	0.002
19		288.7	Joint		Roots	1	0.002	1	1	0.002
20		291.9	Joint		Roots	1	0.002	1	1	0.002
21		303.9	Joint		Roots	1	0.002	1	1	0.002
22		323.8	Upper Right		Mat'l Chngs to PVC	1				
		328.0	Invert		Outside Drop Hole					
23		331.3	DS Manhole	5748-090		1				

The outside drop was constructed in 2007. -LML

No taps.





4517

939

917

859

380

379

378

377

396

391

390

389

388

305

402

401

400

399

N TERRACE DR

N PERSHING AVE

N DELROSE AVE

E 9TH ST N

E 8TH ST N

Television Inspection Master Report

9/2/2011

2:52 PM

US Structure: 5748-391 4517 E 9TH ST Date Insp: 2/24/2011 Basin: E04E
 DS Structure: 5748-390 939 N PERSHING AVE Dir Televised: Upstream To Downstream

Pipe Information

Project No. : C-054 Dia: 8 Material: VCP Length: 219.5 Slope: 0.400

Obs. #	VTR Counter	Distance	Location	Description	Rating	Obsrvd (gpm)	Ratings			Remain (gpm)
							Est. (gpm)	Struct	Clean	
1		0.0		5748-391 US Manhole						
2		14.7	958 N TERRACE	Break-In Conn / roots up the service	3		0.004	2	0	0.004
3		19.6		Sealed Off Wye	2		0.000	0	0	0.000
4		24.0		Roots	1		0.002	1	1	0.002
5		33.3		Roots	3		0.008	5	8	0.008
6		34.9	4517 E 9TH ST N / PVC	Break-In Conn	1		0.001	0	0	0.001
7		34.9		Crack-Horizontal	1		0.001	1	0	0.001
8		36.7		Crack-Horizontal	1		0.001	1	0	0.001
9		43.5		Sealed Off Wye	1		0.000	0	0	0.000
10		45.5		Roots	2		0.004	2	4	0.004
11		47.4	4517 E 9TH ST N	Wye Service	1		0.000	0	0	0.000
12		61.0		Roots	1		0.002	1	1	0.002
13		62.2		Crack-Horizontal	1		0.001	1	0	0.001
14		68.0	952 N TERRACE	Wye Service	2		0.000	0	0	0.000
15		70.6		Sealed Off Wye	4		0.000	0	0	0.000
16		74.0		Crack-Horizontal	3		0.004	5	0	0.004
17		77.0		Broken Pipe	2		0.008	44	0	0.008
18		79.7		Roots	1		0.002	1	1	0.002
19		89.0		Roots	1		0.002	1	1	0.002
20		97.2		Sealed Off Wye	1		0.000	0	0	0.000
21		98.8		Roots	1		0.002	1	1	0.002
22		99.6	951 N PERSHING	Wye Service	2		0.000	0	0	0.000
23		101.5		Roots	2		0.004	2	4	0.004
24		107.8		Roots	3		0.008	5	8	0.008
25		113.7		Roots	2		0.004	2	4	0.004
26		117.0		Roots	2		0.004	2	4	0.004
27		120.1		Roots	2		0.004	2	4	0.004
28		121.6	948 N TERRACE	Wye Service	5		0.000	400	0	0.000
				(heavy roots from service hang into the main)						
29		124.9		Sealed Off Wye	1		0.000	0	0	0.000
30		126.2		Roots	1		0.002	1	1	0.002
31		141.8		Roots	1		0.002	1	1	0.002
32		149.8		Sealed Off Wye / seal broken (roots)	1		0.000	0	0	0.000
33		151.0		Roots	2		0.004	2	4	0.004
34		151.9	945 N PERSHING	Break-In Conn	2		0.002	0	0	0.002
35		157.3		Roots	1		0.002	1	1	0.002
36		160.2		Roots	1		0.002	1	1	0.002
37		166.5		Roots	2		0.004	2	4	0.004
38		169.8		Roots	2		0.004	2	4	0.004

Television Inspection Master Report

9/2/2011

2:52 PM

US Structure: 5748-391 4517 E 9TH ST Date Insp: 2/24/2011 Basin: E04E
 DS Structure: 5748-390 939 N PERSHING AVE Dir Televised: Upstream To Downstream

39	172.8		Roots	2	0.004	2	4	0.004
40	177.1	940 N TERRACE	Wye Service	5	0.000	400	0	0.000
		(service packed with roots)						
41	179.1		Roots	1	0.002	1	1	0.002
42	180.9		Sealed Off Wye	1	0.000	0	0	0.000
43	191.7		Roots	1	0.002	1	1	0.002
44	205.8	938 N TERRACE	Wye Service	5	0.000	400	0	0.000
		(service packed with roots)						
45	207.0		Roots	1	0.002	1	1	0.002
46	208.6	939 N PERSHING	Break-In Conn	2	0.002	0	0	0.002
47	219.8		5748-390 DS Manhole					

Lots of roots and small cracks on the north end of this line.

Television Inspection Master Report

9/2/2011

2:53 PM

US Structure: 5748-390 939 N PERSHING AVE Date Insp: 2/24/2011 Basin: E04E
 DS Structure: 5748-389 917 N PERSHING AVE Dir Televised: Upstream To Downstream

Pipe Information

Shape: Round Length Status: Project No. : C-054
 Dia/Ht: 8 Material: VCP Index:
 Length: 220.0 Slope: 0.400 Surface:

Obs. #	VTR Counter	Distance	Location	Description	Rating	Obsrvd (gpm)	Ratings			Remain (gpm)
							Est. (gpm)	Struct	Clean	
1		0.0		5748-390 US Manhole	3	0.000	0	0	0.000	
2		9.1		Roots	2	0.004	2	4	0.004	
3		13.0		Roots	2	0.004	2	4	0.004	
4		14.2		Sealed Off Wye	1	0.000	0	0	0.000	
5		17.3		Sealed Off Wye	1	0.000	0	0	0.000	
6		19.2		Roots	1	0.002	1	1	0.002	
7		24.7		Roots	1	0.002	1	1	0.002	
8		28.5		Grease	1	0.000	0	0	0.000	
9		36.7		Roots	1	0.002	1	1	0.002	
10		41.9		Sealed Off Wye	1	0.000	0	0	0.000	
11		45.2		Sealed Off Wye	1	0.000	0	0	0.000	
12		46.6		Roots	2	0.004	2	4	0.004	
13		49.1		Roots	2	0.004	2	4	0.004	
14		62.6		Grease	1	0.000	0	0	0.000	
15		65.1		Grease	3	0.000	0	5	0.000	
16		68.8		Roots	2	0.004	2	4	0.004	
17		69.7	932 N TERRACE	Break-In Conn	5	0.010	400	0	0.010	
			(service packed with roots)							
18		72.4		Roots	3	0.008	5	8	0.008	
19		73.1	292 N PERSHING	Wye Service	5	0.000	400	0	0.000	
			(service packed with roots)							
20		88.4		Grease	1	0.000	0	0	0.000	
21		98.8		Sealed Off Wye	2	0.000	0	0	0.000	
22		101.4		Sealed Off Wye	1	0.000	0	0	0.000	
23		107.2		Grease	2	0.000	0	0	0.000	
24		112.1		Roots	2	0.004	2	4	0.004	
25		118.3		Roots	2	0.004	2	4	0.004	
26		124.7		Roots	3	0.008	5	8	0.008	
27		125.9	928 N TERRACE	Break-In Conn	5	0.010	400	0	0.010	
			(service packed with roots)							
28		127.5		Roots	4	0.010	10	25	0.010	
29		129.4	927 N PERSHING	Wye Service	1	0.000	0	0	0.000	

Television Inspection Master Report

9/2/2011

2:53 PM

US Structure: 5748-390 939 N PERSHING AVE Date Insp: 2/24/2011 Basin: E04E
 DS Structure: 5748-389 917 N PERSHING AVE Dir Televised: Upstream To Downstream

30	130.9		Grease	1	0.000	0	0	0.000
31	148.7		Grease	2	0.000	0	0	0.000
32	153.8	924 N TERRACE	Break-In Conn	1	0.001	0	0	0.001
33	157.5		Sealed Off Wye	1	0.000	0	0	0.000
34	161.6		Roots	2	0.004	2	4	0.004
35	165.2	(heavy roots in this area)	Roots	4	0.010	10	25	0.010
36	166.6		Grease	2	0.000	0	0	0.000
37	167.9		Roots	5	0.030	18	100	0.030
38	171.5		Roots	2	0.004	2	4	0.004
39	173.3	923 N PERSHING / roots	Break-In Conn	5	0.010	400	0	0.010
40	182.9	918 N TERRACE / roots	Wye Service	5	0.000	400	0	0.000
41	184.2		Roots	2	0.004	2	4	0.004
42	185.2	917 N PERSHING / roots	Wye Service	5	0.000	400	0	0.000
43	190.2		Roots	2	0.004	2	4	0.004
44	192.7	(heavy roots in this area)	Roots	5	0.030	18	100	0.030
45	199.4		Roots	5	0.030	18	100	0.030
46	203.2		Roots	4	0.010	10	25	0.010
47	211.0	(seal broken / roots)	Sealed Off Wye	5	0.000	0	0	0.000
48	212.0	(heavy roots at joint)	Roots	4	0.010	10	25	0.010
49	215.0	911 N PERSHING	Break-In Conn	5	0.010	400	0	0.010
(this is a PVC service pipe inside a VCP tap – pipe is cracked and missing around the VCP tap and there are roots) Connect PVC service to newly installed 8" PVC main.								
50	216.4		Broken Pipe	5	0.060	100	0	0.060
51	216.9	912 N TERRACE	Break-In Conn	5	0.010	400	0	0.010
(pipe is gone around the tap / main is busted)								
52	218.8		Broken Pipe	2	0.008	44	0	0.008
(the camera does not make it into the downstream manhole / too much pipe missing / footage meter stopped)								
53	219.4	5748-389 DS Manhole		1	0.000	0	0	0.000

The downstream 15.5 feet of pipe was replaced by Sewer Maintenance, April 2013. Including the replacement of the two tap connections within that repair. -LML

Television Inspection Master Report

9/2/2011

2:54 PM

US Structure: 5748-389 917 N PERSHING AVE Date Insp: 2/25/2011 Basin: E04E
 DS Structure: 5748-388 859 N PERSHING AVE Dir Televised: Downstream To Upstream

Pipe Information

Shape: Round Length Status: Project No. : C-054
 Dia/Ht: 8 Material: VCP Index:
 Length: 221.0 Slope: 0.400 Surface:

Obs. #	VTR Counter	Distance	Location	Description	Rating	Obsrvd (gpm)	Ratings		Remain (gpm)
							Est. (gpm)	Struct Clean	
1		0.0		5748-388 DS Manhole	tv against the flow				
2		6.0	Joint	Offset	3	0.010	20	0	0.010
3		49.7		Roots	1	0.002	1	1	0.002
4		64.9	901 N PERSHING	Wye Service / offset / roots	5	0.000	400	0	0.000
5		89.2		Sealed Off Wye	1	0.000	0	0	0.000
6		92.4	902 N TERRACE	Break-In Conn / roots (rough tap)	4	0.008	60	0	0.008
7		93.5		Crack-Horizontal	3	0.004	5	0	0.004
8		101.5		Roots	1	0.002	1	1	0.002
9		104.5	907 N PERSHING	Break-In Conn	1	0.001	0	0	0.001
10		117.4	907 N PERSHING	Break-In Conn	3	0.004	2	0	0.004
11		119.9		Sealed Off Wye	1	0.000	0	0	0.000
12		129.7		Roots	1	0.002	1	1	0.002
13		133.4		Roots	2	0.004	2	4	0.004
14		135.6		Roots	2	0.004	2	4	0.004
15		142.4		Roots	1	0.002	1	1	0.002
16		145.1		Sealed Off Wye	1	0.000	0	0	0.000
17		145.2		Roots	1	0.002	1	1	0.002
18		147.8		Sealed Off Wye	1	0.000	0	0	0.000
19		151.0		Roots	2	0.004	2	4	0.004
20		160.4		Roots	3	0.008	5	8	0.008
21		163.3		Roots	1	0.002	1	1	0.002
22		173.9		Crack-Horizontal	3	0.004	5	0	0.004
23		175.8	911 N PERSHING	Wye	1	0.000	0	0	0.000
24		177.2		Crack-Horizontal	3	0.004	5	0	0.004
25		178.3	912 N TERRACE	Break-In Conn	3	0.004	2	0	0.004
26		179.5		Sealed Off Wye	2	0.000	0	0	0.000
27		203.7		Sealed Off Wye	1	0.000	0	0	0.000
28		206.1		Sealed Off Wye	1	0.000	0	0	0.000
29		220.4	917 N PERSHING	5748-389 US Manhole	1	0.000	0	0	0.000

There are more cracks in the pipe than what is indicated on this tv log. -LML