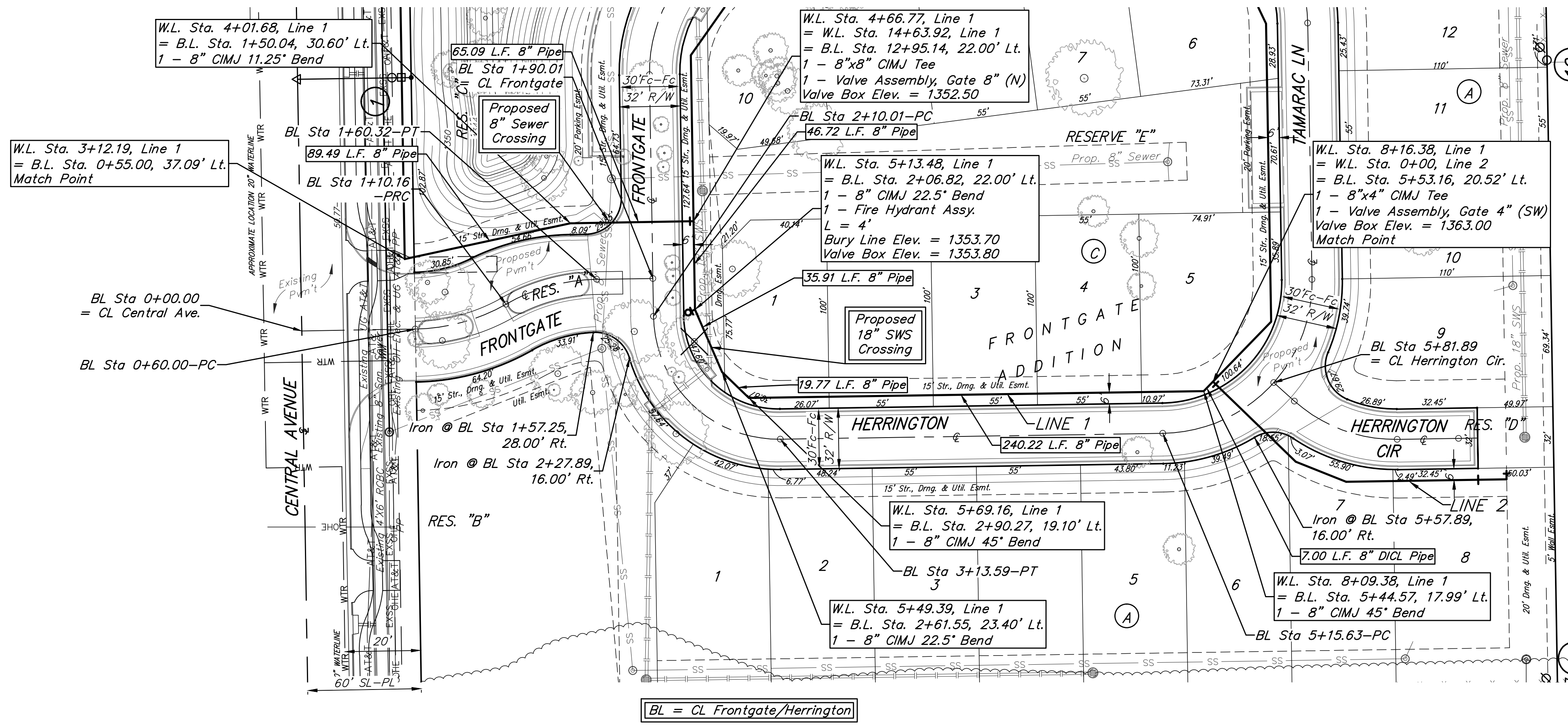
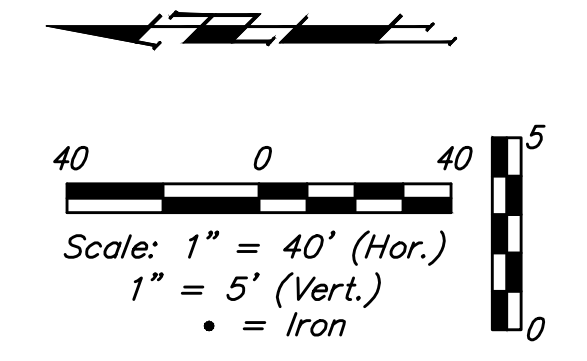



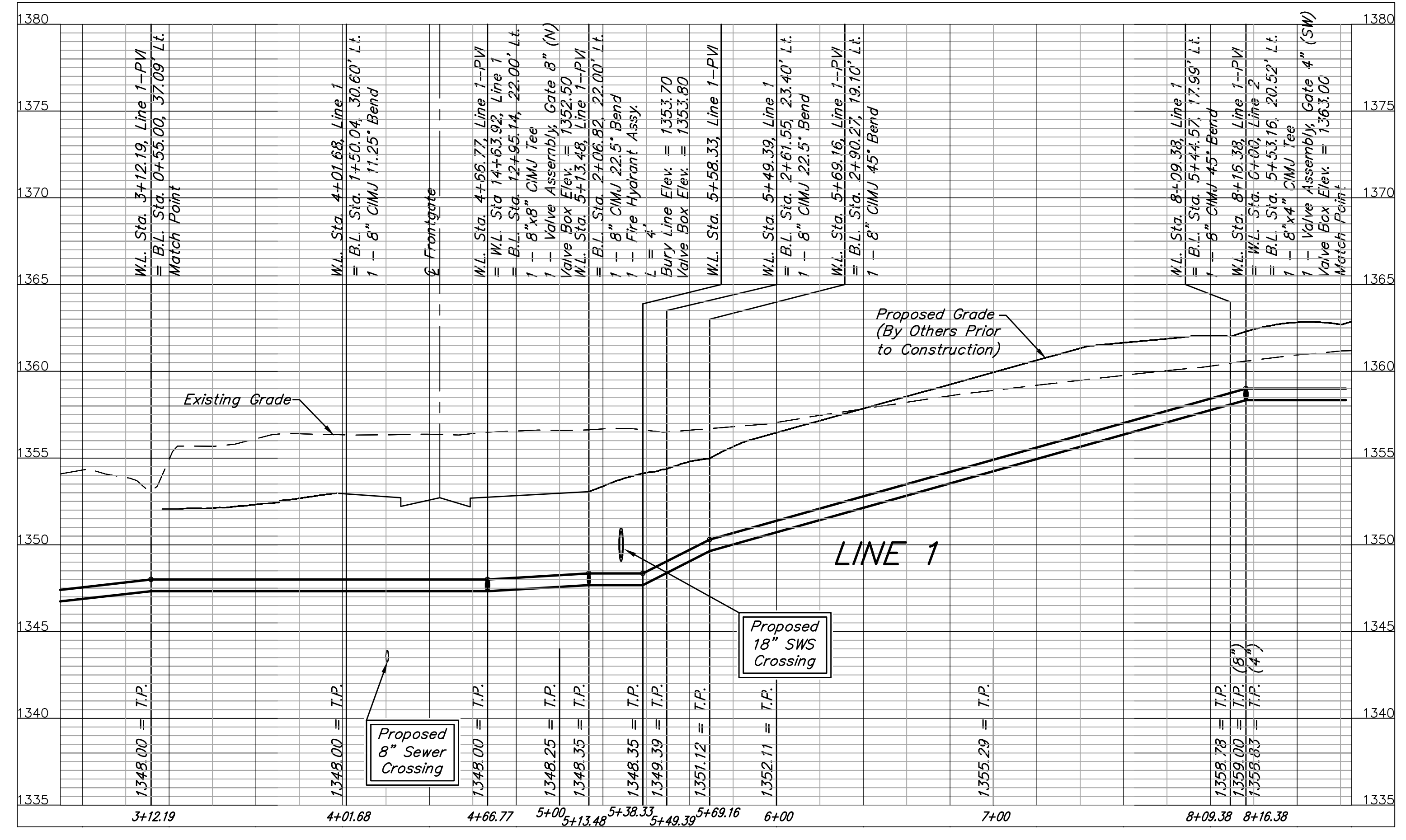
BENCHMARKS:
 BM #1: CITY OF WICHITA DISC - WEST END OF CONCRETE HEADWALL OF REINFORCED CONCRETE BOX CULVERT, SOUTHEAST CORNER OF JACKSON HEIGHTS AND CENTRAL, 66.7' EAST & 11.6' NORTH OF THE NORTHEAST CORNER OF RESERVE "C", FRONTGATE ADDITION. ELEV. = 1349.46 NAVD88


BM #2: SQUARE CUT ON TOP OF REINFORCED CONCRETE BOX CULVERT, 19.2' WEST & 24.7' NORTH OF THE NORTHWEST CORNER OF RESERVE "B", FRONTGATE ADDITION. ELEV. = 1351.80 NAVD88



 Indicates tree to be removed by contractor. To be paid for as lump sum bid item "Site Clearing"

All other trees shall remain and be protected from damage during construction. Overhanging limbs shall be trimmed by the Contractor only as necessary for construction and with approval of the Engineer. Cost of tree trimming to be included in bid item "Site Clearing"



	FRONTGATE ADDITION	
	LINE 1	
WATER DISTRIBUTION SYSTEM		
Baughman Company, P.A. 315 Ellis St., Wichita, KS 67211 P 316-262-7271 F 316-262-0149		
ENGINEERING SURVEYING PLANNING LANDSCAPE ARCHITECTURE		
PROJECT NUMBER 448-90592	DESIGN AEG	DRAWN TMS
REVISIONS:	APPROVED	DATE 5/15/13
	SCALE Noted	SHEET
		5 OF 15