

# MAIN 19, SOUTHWEST INTERCEPTOR SEWER PHASE 3

## CITY OF WICHITA, KANSAS

Neil D. Cable, P.E. City Engineer

Project Number

**468-83186**

OCA Number

**743990**

### BENCHMARKS:

RR Spike N. Face P.P.  
40± S. of E. 37th Street N.,  
180± E. of SW Cor. SE 1/4,  
Sec. 28, Twp. 26-S, R-1-W  
Elev. = 1444.15 City Datum  
MSL Elev. = 1331.53

RR Spike N. Face P.P.  
44± S. of E. 37th Street N.,  
980± E. of SW Cor. SE 1/4,  
Sec. 28, Twp. 26-S, R-1-W  
Elev. = 1433.73 City Datum  
MSL Elev. = 1331.13

### Sheet Index

- |                          |      |
|--------------------------|------|
| Title Sheet              | 1    |
| Line 1                   | 2-3  |
| Line 2                   | 4    |
| Standard MH Detail       | 5    |
| Ring & Cover Detail      | 6    |
| Vertical Riser Detail    | 7    |
| Erosion Control BMP's    | 8-11 |
| Northridge Addition Plat | 12   |

### GENERAL NOTES:

- Contractor will be required to provide notice to utility companies a minimum of twenty-four (24) hours prior to any excavation, as follows:  
Kansas One-Call 687-2470

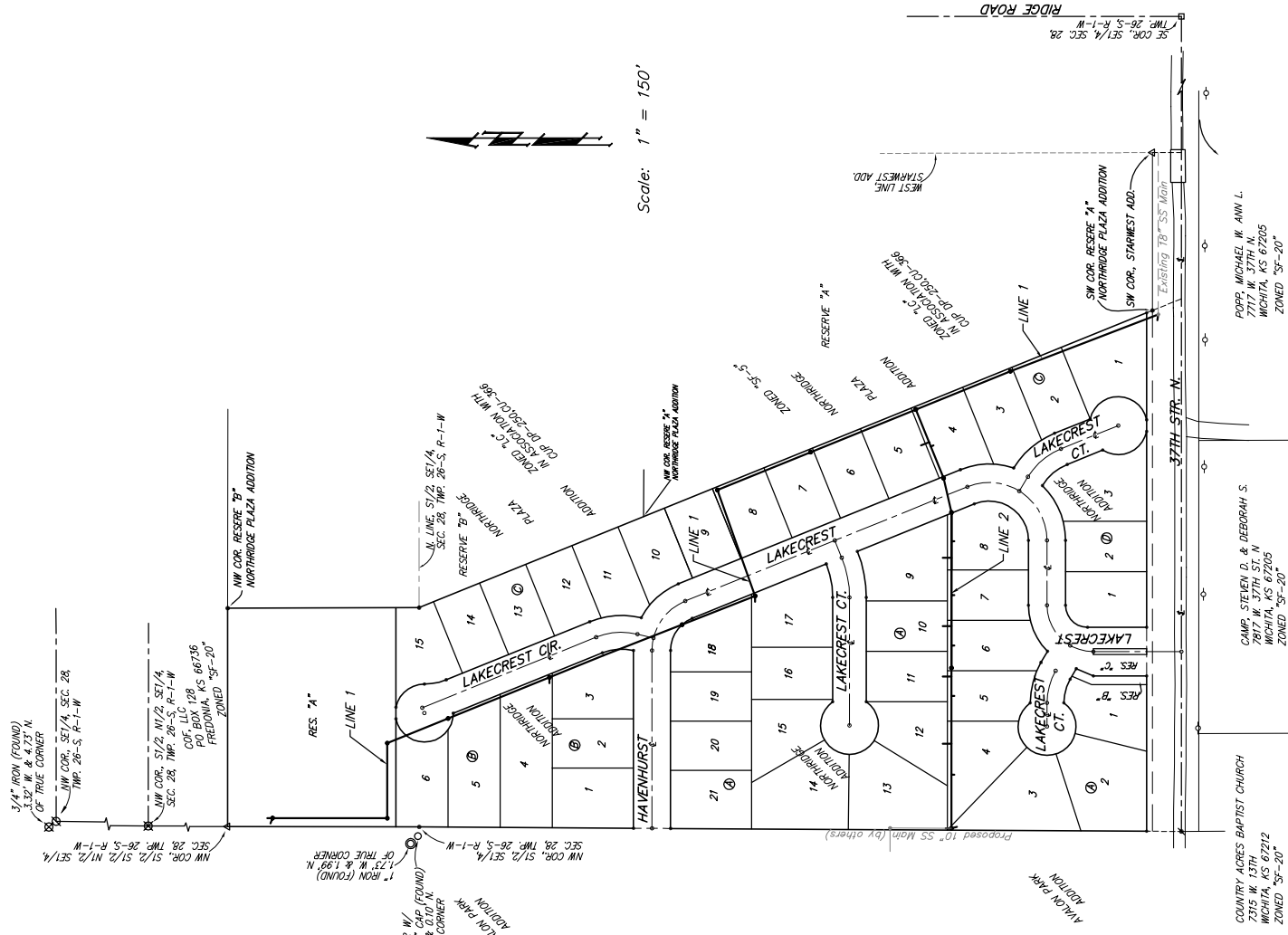
The Contractor must notify the following in case of an emergency:

- |                                    |                |
|------------------------------------|----------------|
| Cox Communications                 | 262-4270       |
| Kansas Gas Service                 | 1-888-482-4950 |
| Weslar Energy                      | 383-8650       |
| Aquila Energy                      | 1-800-303-0357 |
| Southwestern Bell                  | 268-2245       |
| City of Wichita Water Dept.        | 268-4563       |
| City of Wichita Sewer Maint.       | 268-4024       |
| City of Wichita Storm Sewer Maint. | 268-4090       |
| City of Wichita Traffic Maint.     | 268-4644       |
| Wilco Pipeline Co.                 | 1-800-338-2651 |
| Phillips Pipeline Co.              | 529-6600       |
|                                    | 1-800-766-8230 |

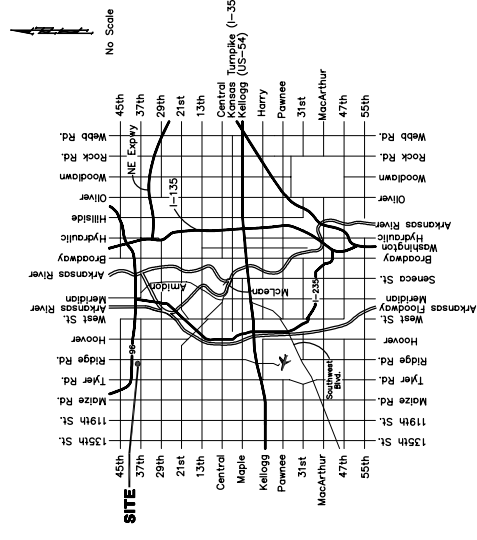
- Utility service lines, poles, valve boxes, meters, and etcetera are to be adjusted as necessary by others prior to construction unless the plans specifically call for their adjustment by the Contractor or unless the plans specifically identify a utility to be adjusted by its owner during construction. Existing utilities and their location, as shown on the plans, represent the best information available for design. The Contractor is required to locate and identify existing utilities within the right-of-way which do not conflict with proposed construction.

- Rubble from the removal of miscellaneous structures and excess excavation which is to be wasted shall be disposed of on sites to be provided by the Contractor. These sites shall be approved by the Engineer as to suitability, appearance and site location. Locations, in the opinion of the Engineer, will leave no unsightly appearance and will not be approved. All disposal sites must be approved by the City of Wichita Department of Health and Environment. Material either stockpiled or disposed of in a flood plain would require a Kansas State Board of Agriculture permit. Any material dumped in waters of the United States or wetlands is subject to U.S. Corps of Engineers permitting regulations. Any material buried or stockpiled beyond approved construction limits would require additional archaeological investigations unless buried in a previously approved borrow location.

NOTE: Construction of this project cannot begin until the manhole at Sta. 0+00 Line 1 is constructed and the flow line is established.



Scale: 1" = 150'



### Vicinity Map