

**BENCHMARKS:**

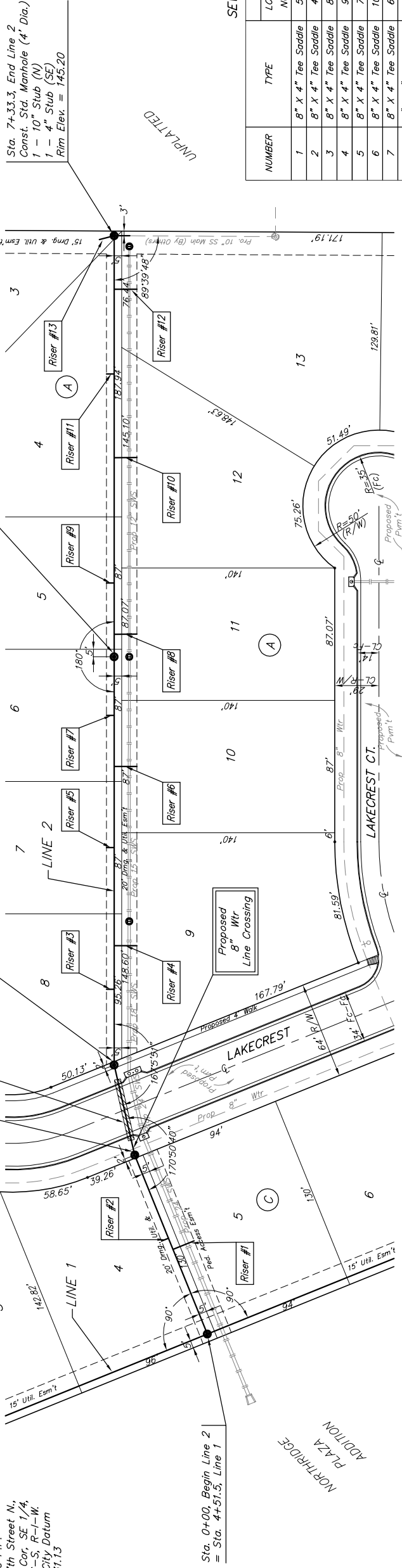
RR Spike N. Face P.P.  
 40± S. of  $\frac{1}{4}$  of 37th Street N.,  
 180± E. of SW Cor. SE 1/4,  
 Sec. 28, Twp 26-S, R-1-W,  
 Elev. = 144.13 City Datum  
 MSL Elev. = 1331.53

RR Spike N. Face P.P.  
 44± S. of  $\frac{1}{4}$  of 37th Street N.,  
 990± E. of SW Cor. SE 1/4,  
 Sec. 28, Twp 26-S, R-1-W,  
 Elev. = 143.73 City Datum  
 MSL Elev. = 1331.13

Sta. 1+27.0, Line 2  
 Const. Std. Manhole (5' Dia.)  
 Rim Elev. = 148.00

Sta. 1+37.0 to Sta. 1+78.0  
 Install 41.0 L.F. Flowable Fill  
 Per City Specifications.

Sta. 1+87.8, Line 2  
 Const. Std. Manhole (5' Dia.)  
 Rim Elev. = 148.00

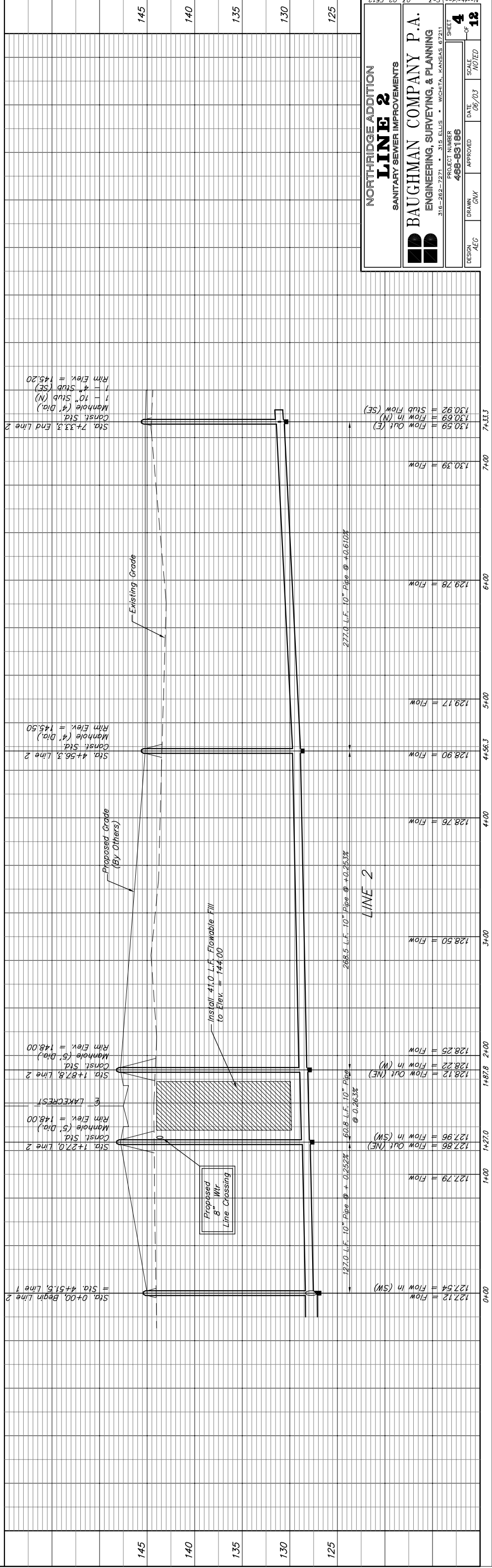


Scale: 1" = 40' Horizontal  
 1" = 5' Vertical  
 \* = Iron

**SEWER SERVICE TABLE**

NUMBER	TYPE	LOCATION		STATION DIRECTION	FOR INFORMATION ONLY	
		LOT NO.	BLOCK NO.		VERTICAL	APPROXIMATE LENGTH 4" PIPE HORIZONTAL
1	8" X 4" Tee Saddle	5	C	0+60.0/Rt.	14.5'	15'
2	8" X 4" Tee Saddle	4	C	0+68.0/Lt.	15'	5'
3	8" X 4" Tee Saddle	8	A	2+37.5/Lt.	15'	5'
4	8" X 4" Tee Saddle	9	A	2+66.3/Rt.	14.5'	15'
5	8" X 4" Tee Saddle	7	A	2+30.7/Lt.	14'	5'
6	8" X 4" Tee Saddle	10	A	3+84.1/Rt.	13'	15'
7	8" X 4" Tee Saddle	6	A	4+17.7/Lt.	13'	5'
8	8" X 4" Tee Saddle	11	A	4+71.1/Rt.	12'	15'
9	8" X 4" Tee Saddle	5	A	5+04.7/Lt.	12'	15'
10	8" X 4" Tee Saddle	12	A	5+87.1/Rt.	11.5'	15'
11	8" X 4" Tee Saddle	4	A	6+42.2/Lt.	11'	5'
12	8" X 4" Tee Saddle	13	A	6+98.0/Rt.	11'	15'
13	4" Stub w/ Riser	3	A	7+33.3/Lt.	11'	5'

NOTE: Vertical Riser Pipe shall be extended to 2' minimum above ground water elevation and 4' maximum below proposed ground elevation.



Northridge SS3 03-02-ES12

**LINE 2**

NORTHBRIDGE ADDITION  
 SANITARY SEWER IMPROVEMENTS

**BAUGHMAN COMPANY P.A.**  
 ENGINEERING, SURVEYING, & PLANNING

316-262-7271 • 316 ELLIS • WICHITA, KANSAS 67211

DESIGN	AEG	DRAWN	GMV	DATE	06/03	SCALE	NOTED
PROJECT NUMBER	488-85186		APPROVED				
SHEET	4		OF	12			