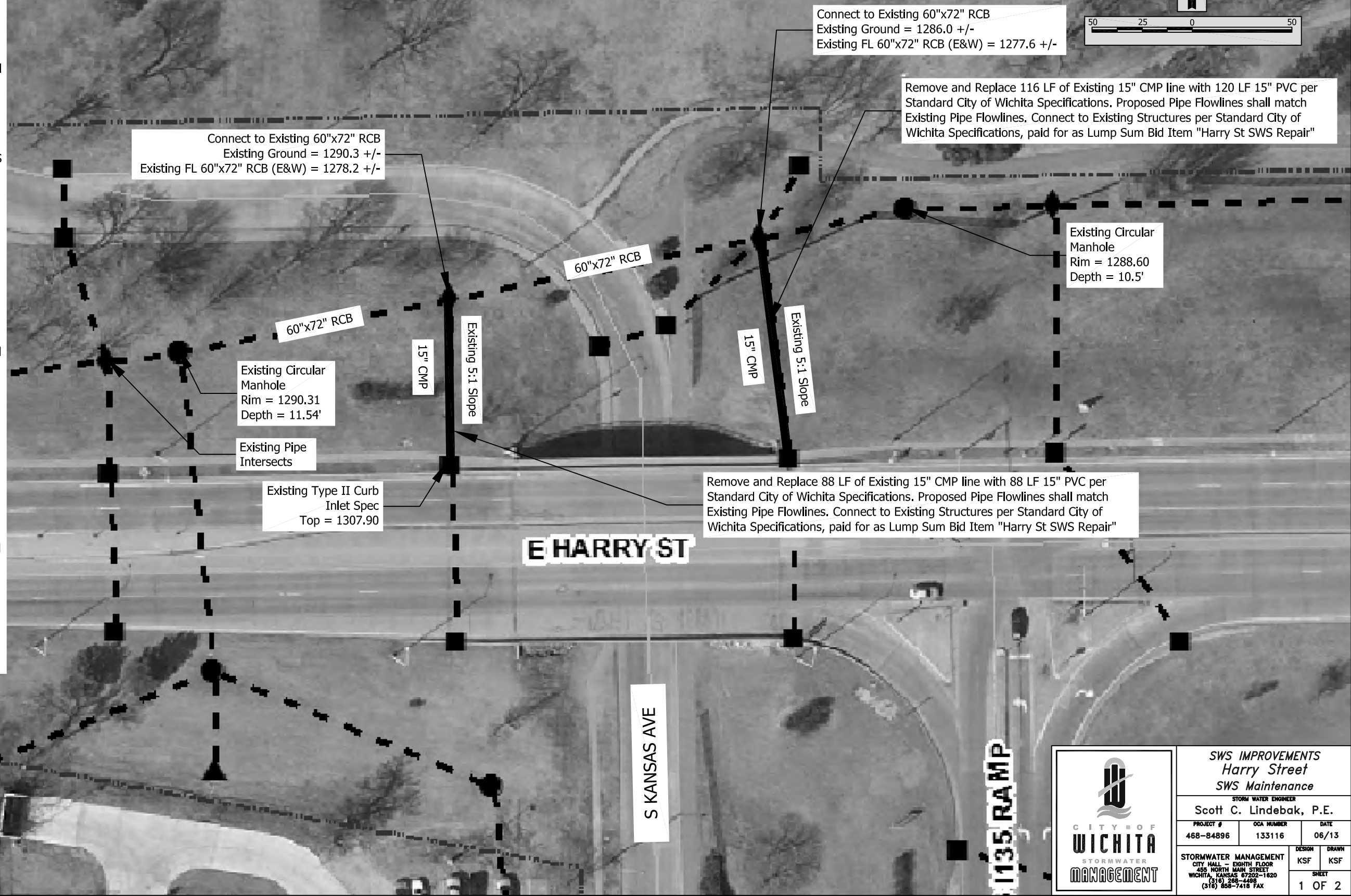
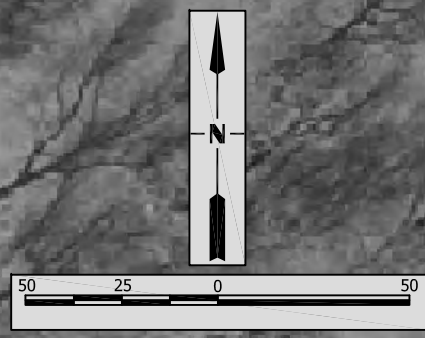


\\OZONE\Dept\Public Works\Storm Water Flood Control\Engineering\Hot Spot Projects\Projects\Harry & Kansas\Ph 1488-84896 Harry, Hydraulic - Grove Ph 1.dwg, 6/18/2013 3:24:30 PM, 1:2

Notes:

1. All existing elevations, depths, lengths, sizes, materials and descriptions shown on the plan sheet are for information only. Contractor will field verify these items and any existing utility locations prior to construction.
2. Contractor will seed and mulch all disturbed areas to City of Wichita Standard Specifications, and cover all disturbed areas with NA SC 150 erosion control blanket or equivalent on slopes greater than 6:1. Seeding and mulching and erosion control blanket will be paid for as incidental to Lump Sum Bid item "Harry St SWS Repair"
3. Sidewalk, curb & gutter, pavement removed and replaced as required or damaged by construction, and any necessary work needed to complete the pipe removal and replacement, will require approval by the City Engineer prior to being done and be paid for as Lump Sum Bid item "Harry St SWS Repair".
4. Flow of traffic must be maintained in all instances. Additionally, all work in the right-of-way or near expected traffic shall conform to the guidelines and rules of the "Manual of Uniform Traffic Control Devices". The Contractor will be required to develop a traffic control plan and receive approval by the City Engineer prior to construction.
5. The PVC pipe material shall be SDR26 pipe or equivalent approved by the City of Wichita Stormwater Engineer.
6. On existing ground surface slopes 4:1 or greater, pipe bends may be used, but must be approved prior to construction by the the Engineer.

SWS #671 Repair at Harry Street, Hydraulic Avenue to Grove Street Phase I
Replace Existing SWS Corrugated Metal Pipe with SDR26 PVC Pipe
Project #468-84896, OCA #133116



Connect to Existing 60"x72" RCB
 Existing Ground = 1290.3 +/-
 Existing FL 60"x72" RCB (E&W) = 1278.2 +/-

Connect to Existing 60"x72" RCB
 Existing Ground = 1286.0 +/-
 Existing FL 60"x72" RCB (E&W) = 1277.6 +/-

Remove and Replace 116 LF of Existing 15" CMP line with 120 LF 15" PVC per Standard City of Wichita Specifications. Proposed Pipe Flowlines shall match Existing Pipe Flowlines. Connect to Existing Structures per Standard City of Wichita Specifications, paid for as Lump Sum Bid Item "Harry St SWS Repair"

Existing Circular Manhole
 Rim = 1288.60
 Depth = 10.5'

Existing Circular Manhole
 Rim = 1290.31
 Depth = 11.54'

Existing Type II Curb
 Inlet Spec
 Top = 1307.90

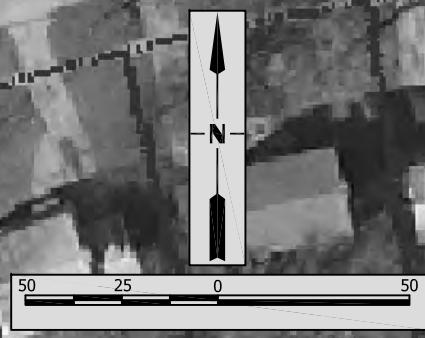
Remove and Replace 88 LF of Existing 15" CMP line with 88 LF 15" PVC per Standard City of Wichita Specifications. Proposed Pipe Flowlines shall match Existing Pipe Flowlines. Connect to Existing Structures per Standard City of Wichita Specifications, paid for as Lump Sum Bid Item "Harry St SWS Repair"



SWS IMPROVEMENTS			
<i>Harry Street</i>			
<i>SWS Maintenance</i>			
STORM WATER ENGINEER			
Scott C. Lindebak, P.E.			
PROJECT #	OCA NUMBER	DATE	
468-84896	133116	06/13	
STORMWATER MANAGEMENT		DESIGN	DRAWN
CITY HALL - EIGHTH FLOOR		KSF	KSF
455 NORTH MAIN STREET		SHEET	
WICHITA, KANSAS 67202-1820		1 OF 2	
(316) 268-4488			
(316) 858-7418 FAX			

\\OZONE\Dept\Public Works\Storm Water Flood Control\Engineering\Hot Spot Projects\Projects\Harry & Kansas\Ph \468-84896 Harry, Hydraulic - Grove Ph I.dwg, 6/18/2013 3:05:50 PM, 1:2

SWS #671 Repair at Harry Street, Hydraulic Avenue to Grove Street Phase I Replace Existing SWS Corrugated Metal Pipe with SDR26 PVC Pipe Project #468-84896, OCA #133116



Connect to Existing 48"x72" RCB
Existing Ground = 1292.7 +/-
Existing FL 48"x72" RCB (E&W) = 1281.0 +/-

Remove and Replace 68 LF of Existing 18" CMP line with 68 LF 18" PVC per Standard City of Wichita Specifications. Proposed Pipe Flowlines shall match Existing Pipe Flowlines. Connect to Existing Structures per Standard City of Wichita Specifications, paid for as Lump Sum Bid Item "Harry St SWS Repair"

Existing Type II
Curb Inlet Special
Rim = 1303.63
Depth = 3.81'



SWS IMPROVEMENTS Harry Street SWS Maintenance		
STORM WATER ENGINEER Scott C. Lindebak, P.E.		
PROJECT # 468-84896	OCA NUMBER 133116	DATE 06/13
STORMWATER MANAGEMENT CITY HALL - EIGHTH FLOOR 455 NORTH MAIN STREET WICHITA, KANSAS 67202-1820 (316) 268-4488 (316) 858-7418 FAX		DESIGN KSF
		DRAWN KSF SHEET 2 OF 2