

# GRADING PLANS (SWD #389) FOR BAY COUNTRY ADDITION

AN ADDITION TO THE CITY OF WICHITA  
SEDGWICK COUNTY, KANSAS

PROJECT NO. 468-84887

GARY L. JANZEN, P.E. - CITY ENGINEER

OCA 751520

## GENERAL NOTES

- UNLESS SHOWN OR STATED OTHERWISE ON THESE DRAWINGS, MATERIALS AND CONSTRUCTION SHALL BE IN ACCORDANCE WITH CITY OF WICHITA SPECIFICATIONS.
- CONTRACTOR WILL BE REQUIRED TO PROVIDE A MINIMUM ADVANCE NOTICE OF SEVENTY-TWO (72) HOURS TO UTILITY COMPANIES PRIOR TO STARTING ANY EXCAVATION AS FOLLOWS:  
KANSAS ONE-CALL 1-800-344-7233  
OR 687-2470 (LOCAL WICHITA)

THE CONTRACTOR MUST NOTIFY THE FOLLOWING IN CASE OF AN EMERGENCY:

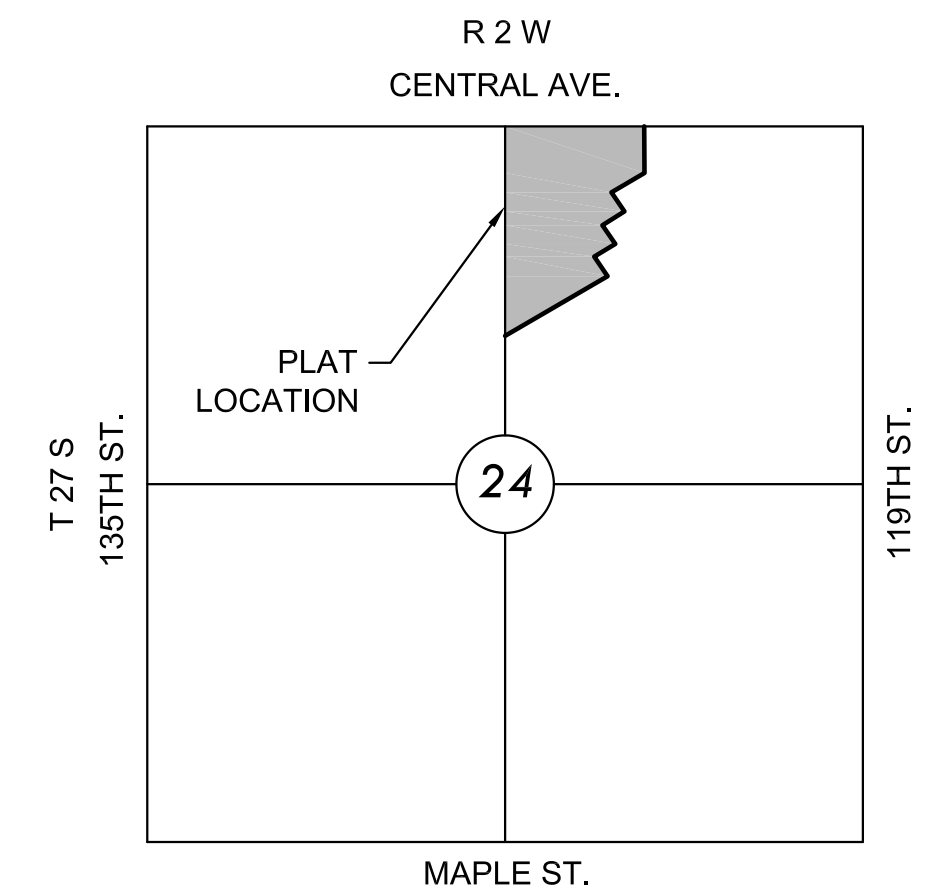
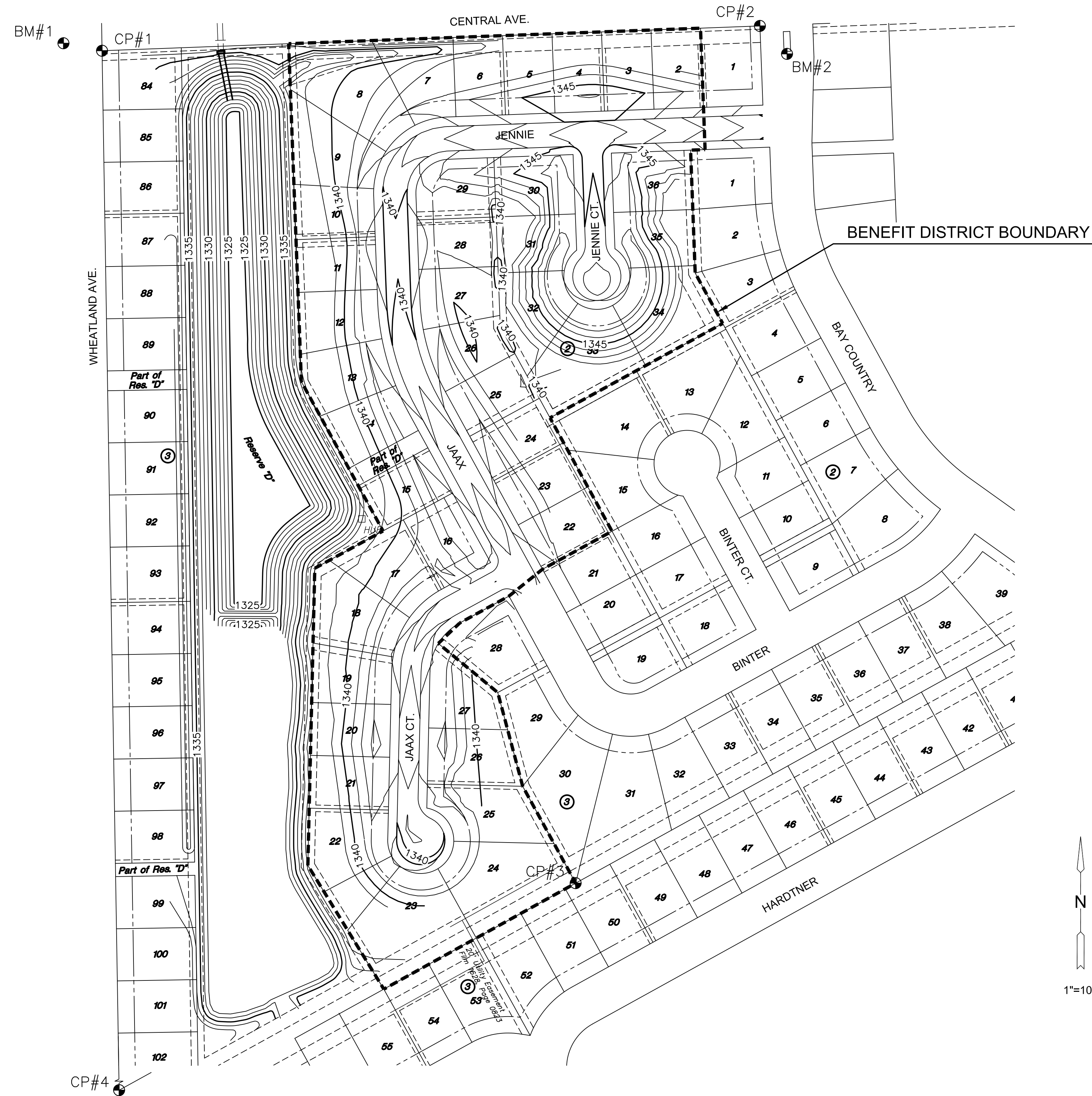
|                                      |              |
|--------------------------------------|--------------|
| SBC (TELEPHONE)                      | 800-870-8390 |
| COX COMMUNICATIONS (CABLE)           | 262-0661     |
| WESTAR (ELECTRIC)                    | 383-8600     |
| KANSAS GAS SERVICE (GAS)             | 832-3101     |
| CITY OF WICHITA WATER & SEWER MAINT. | 262-6000     |
| BLACK HILLS ENERGY (GAS)             | 800-303-0357 |

- THE CONTRACTOR SHALL BE RESPONSIBLE FOR PRESERVING PROPERTY IRONS. THE CONTRACTOR WILL BE REQUIRED TO RE-ESTABLISH ANY PROPERTY IRONS WHICH ARE DAMAGED OR DESTROYED BY HIS CONSTRUCTION OPERATIONS. SUCH IRONS SHALL BE RE-ESTABLISHED BY A LICENSED LAND SURVEYOR IN ACCORDANCE WITH STATE LAWS.
- EXISTING UTILITIES AND THEIR LOCATIONS, AS SHOWN ON THE PLANS REPRESENT THE BEST INFORMATION OBTAINABLE FOR DESIGN. LOCATION INFORMATION HAS BEEN OBTAINED FROM THE VARIOUS UTILITY COMPANIES AND IS EITHER FROM COMPANY RECORD DRAWINGS OR COMPANY PROVIDED FIELD LOCATIONS. THE PLAN LOCATIONS SHOWN ARE NOT GUARANTEED. ADDITIONAL EXISTING UTILITIES MAY ALSO BE ENCOUNTERED.
- RUBBLE FROM THE REMOVAL OF MISCELLANEOUS STRUCTURES AND EXCESS EXCAVATION WHICH IS TO BE WASTED SHALL BE DISPOSED OF ON SITES TO BE PROVIDED BY THE CONTRACTOR. THESE SITES SHALL BE APPROVED BY THE ENGINEER AS TO SUITABILITY, APPEARANCE AND SITE LOCATION. LOCATIONS THAT, IN THE OPINION OF THE ENGINEER, WILL LEAVE AN UNSIGHTLY APPEARANCE WILL NOT BE APPROVED. ALL DISPOSAL SITES MUST BE APPROVED BY THE KANSAS DEPARTMENT OF HEALTH AND FLOOD PLAIN WOULD REQUIRE A KANSAS STATE BOARD OF AGRICULTURE PERMIT. ANY MATERIAL DUMPED IN WATERS OF THE UNITED STATES OR WETLANDS IS SUBJECT TO U.S. CORPS OF ENGINEERS PERMITTING REGULATIONS. ANY MATERIAL BURIED OR STOCKPILED BEYOND APPROVED CONSTRUCTION LIMITS WOULD REQUIRE ADDITIONAL ARCHAEOLOGICAL INVESTIGATIONS UNLESS BURIED IN A PREVIOUSLY APPROVED BORROW LOCATION.
- AL COMPACTION OF EARTHWORK SHALL BE 95% STANDARD DENSITY IN ACCORDANCE WITH ASTM D-698 UNLESS OTHERWISE NOTED.
- OTHER CONSTRUCTION MAY BE UNDER WAY SIMULTANEOUSLY WITH THIS PROJECT. THE CONTRACTOR SHALL COORDINATE WITH ANY CONTRACTORS CONSTRUCTING OTHER PORTIONS OF THE PROJECT.
- EXCESS EXCAVATION SHALL BE STOCKPILED ON-SITE IN A LOCATION APPROVED BY THE FIELD ENGINEER.
- STAKING, TESTING AND INSPECTION WILL BE PROVIDED BY THE CITY OF WICHITA.
- CONTRACTOR SHALL STORE BACK HEAVY CLAY MATERIAL AS IT IS UNCOVERED FOR CLAY LINER MATERIAL. SEE DETAIL ON SHEET 4 FOR REQUIREMENTS. TESTING TO ENSURE PI WILL BE PAID FOR BY CONTRACTOR.

DISTURBED AREA=18.0 AC  
PROPOSED PERVIOUS=10.9 AC  
PROPOSED IMPERVIOUS=7.1 AC  
WQ<sub>v</sub>=0.95 AC.-FT.  
CP<sub>v</sub> = 1.80 AC.-FT.

THIS OVERALL PROJECT SATISFIES CHAPTER 16.32 OF THE CITY CODE BY THE EXPANSION OF THE POND FOR STORMWATER DETENTION AND WATER QUALITY TREATMENT.

| POND TABLE |                 |                 |
|------------|-----------------|-----------------|
| ELEV.      | STORAGE (AC/FT) | DISCHARGE (CFS) |
| 1333       | -               | -               |
| 1334       | 2.11            | 50.0            |
| 1335       | 5.00            | 141.3           |
| 1336       | 9.21            | 259.6           |



## VICINITY MAP

No Scale

## INDEX TO DRAWINGS

| SHEET NO. | DESCRIPTION           |
|-----------|-----------------------|
| 1         | TITLE SHEET           |
| 2         | GRADING DETAILS       |
| 3         | SITE GRADING PLAN     |
| 4         | POND GRADING PLAN     |
| 5         | EROSION CONTROL PLAN  |
| 6         | SWS DETAILS           |
| 7         | LINE 1 PLAN & PROFILE |
| 8         | WEIR DETAILS          |
| 9         | LOT GRADING PLAN      |
| 10-14     | BMP SHEETS            |
| 15-16     | FINAL PLAT            |

## BENCHMARKS

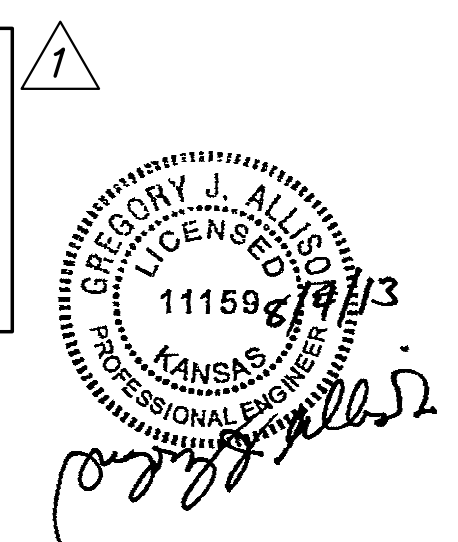
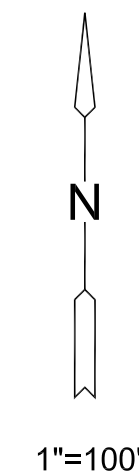
- BM#1 CITY OF WICHITA BENCHMARK DISC ON SOUTHWEST CORNER OF CENTRAL & WHEATLAND, 24' WEST OF CENTERLINE WHEATLAND AND 36' S OF CENTERLINE CENTRAL.  
ELEV.=1342.80
- BM#2 CHISELED SQUARE ON TOP OF CURB AT SOUTH END OF MEDIAN ISLAND ON BAY COUNTRY, 93' SOUTH OF CENTERLINE CENTRAL.  
ELEV.=1342.77

## CONTROL POINTS

- CP #1 3/4" PIPE & ALUM CAP AT NW CORNER LOT 84, BLOCK 3, BAY COUNTRY ADDITION.  
N=1687889.44, E=1604863.96
- CP#2 3/4" PEC PIPE 20 IN DEEP SET 5/8" MKEC OVER AT NE CORNER LOT 1, BLOCK 3, BAY COUNTRY ADDITION.  
N=1687927.02, E=1605860.01
- CP#3 1/2" BAUGHMAN CLS-58 AT SE CORNER LOT 24, BLOCK 3, BAY COUNTRY ADDITION.  
N=1686628.75, E=1605581.12
- CP#4 1/2" BAUGHMAN CLS-58 AT SW CORNER LOT 102, BLOCK 3, BAY COUNTRY ADDITION.  
N=1686247.37, E=1604891.11

## EARTHWORK SUMMARY

|   |             |
|---|-------------|
| EXCAVATION  | 49,000 C.Y. |
| COMPACTED FILL (95%)  | 38,500 C.Y. |
| 25% LOSS & COMPACTION FACTOR ADDED TO EXCAVATION QUANTITIES |             |
| EXCESS MATERIAL TO BE STOCKPILED ON-SITE.                   |             |



©2013 MKEC Engineering All Rights Reserved  
www.mkec.com  
These drawings and their contents, including, but not limited to, all concepts, designs, & ideas are the exclusive property of MKEC Engineering (MKEC), and may not be used or reproduced in any way without the express consent of MKEC.

## TITLE

|             |           |          |
|-------------|-----------|----------|
| PROJECT NO. | 468-84887 |          |
| DATE        | JULY 2013 |          |
| SCALE       | 1"=100'   |          |
| DESIGNED    | DRAWN     | CHECKED  |
| SPE         | BKS       | GJA      |
| NO.         | REVISION  | DATE     |
| 1           | GRADING   | 08/05/13 |

SHEET NO.