

STATE	PROJECT NO.	YEAR	SHEET NO.	TOTAL SHEETS
KANSAS	87 N-0566-01	2013	1	83
F.A. NO. STP-N056(601)				

GRADING 707022
SURFACING 635813
SEEDING
SIGNING
PAVEMENT MARKING

STATE OF KANSAS

DEPARTMENT OF TRANSPORTATION
**PART A: PLAN AND PROFILE OF PROPOSED
135TH ST. W. - KELLOGG AVE. TO ONEWOOD
87 N-0566-01**

CITY OF WICHITA PROJECT NO. 472-84915 O.C.A. NO. 707022
FEDERAL AID PROJECT

**PART B: WATERLINE IMPROVEMENTS
(NON-PARTICIPATING)**

CITY OF WICHITA PROJECT NO. 448-90579 O.C.A. NO. 635813
SEDGWICK COUNTY
CITY OF WICHITA

GENERAL NOTES

ALL CONSTRUCTION WORK AND MATERIAL IN THIS PROJECT SHALL COMPLY WITH CITY OF WICHITA STANDARD SPECIFICATIONS FOR THE CONSTRUCTION OF CITY PROJECTS UNLESS OTHERWISE NOTED IN THE PLANS OR SPECIAL PROVISIONS.

UNDERGROUND UTILITY SERVICE LINES AND OVERHEAD UTILITY POLE LINES ARE TO BE ADJUSTED AS NECESSARY BY OTHERS PRIOR TO CONSTRUCTION UNLESS THE PLANS SPECIFICALLY CALL FOR THEIR ADJUSTMENT BY THE CONTRACTOR. EXISTING UTILITIES AND THEIR LOCATION, AS SHOWN ON THE PLANS, REPRESENT THE BEST INFORMATION OBTAINABLE FOR DESIGN. LOCATION INFORMATION HAS BEEN OBTAINED FROM THE VARIOUS UTILITY COMPANIES AND IS EITHER FROM COMPANY RECORD DRAWINGS OR COMPANY PROVIDED FIELD LOCATIONS. THE CONTRACTOR WILL BE REQUIRED TO WORK AROUND EXISTING UTILITIES WITHIN THE RIGHT-OF-WAY WHICH DO NOT CONFLICT WITH PROPOSED CONSTRUCTION.

TREES AND SHRUBS IN PUBLIC RIGHT-OF-WAY WHICH ARE IN DIRECT CONFLICT WITH PROPOSED NEW CONSTRUCTION SHALL BE REMOVED BY THE CONTRACTOR WITH THE ENGINEER'S APPROVAL. TREES AND SHRUBS WHICH ARE NOT IN DIRECT CONFLICT WITH PROPOSED NEW CONSTRUCTION SHALL BE SAVED AND PROTECTED FROM DAMAGE.

RUBBLE FROM THE REMOVAL OF MISCELLANEOUS STRUCTURES SHALL BE DISPOSED OF ON SITES TO BE PROVIDED BY THE CONTRACTOR AND APPROVED AS NOTED BELOW.

ALL DISPOSAL SITES MUST BE APPROVED BY THE KANSAS DEPARTMENT OF HEALTH AND ENVIRONMENT. MATERIAL EITHER STOCKPILED OR DISPOSED OF IN A FLOOD PLAIN WOULD REQUIRE A KANSAS STATE BOARD OF AGRICULTURE PERMIT. ANY MATERIAL DUMPED IN WATERS OF THE UNITED STATES OR WETLANDS IS SUBJECT TO U.S. CORPS OF ENGINEERS PERMITTING REGULATIONS. ANY MATERIAL BURIED OR STOCKPILED BEYOND APPROVED CONSTRUCTION LIMITS WOULD REQUIRE ADDITIONAL ARCHEOLOGICAL INVESTIGATIONS UNLESS BURIED IN A PREVIOUSLY APPROVED BORROW LOCATION.

CONTRACTOR SHALL SATISFY HIMSELF OF SURFACE AND SUBSURFACE CONDITIONS PRIOR TO BIDDING.

FIELD LOCATE ALL EXISTING UTILITIES PRIOR TO BEGINNING ANY EXCAVATION WORK. CONTACT THE KANSAS ONE-CALL SYSTEM AT 316-687-2470 AT LEAST 48 HOURS IN ADVANCE TO REQUEST FIELD LOCATES FOR UTILITIES THAT ARE NOT MEMBERS OF THE KANSAS ONE-CALL SYSTEM. CONTACT THOSE COMPANIES DIRECTLY.

CONTRACTOR IS RESPONSIBLE FOR PRESERVING EXISTING PROPERTY IRONS. RE-ESTABLISH ANY EXISTING PROPERTY IRONS WHICH ARE DAMAGED OR DESTROYED BY CONSTRUCTION OPERATIONS, OR WHICH ARE COVERED BY 12" OR MORE OF FILL MATERIAL BY THIS PROJECT. SUCH IRONS SHALL BE RE-ESTABLISHED BY A LICENSED LAND SURVEYOR IN ACCORDANCE WITH STATE LAWS AND AT NO ADDITIONAL COST TO THE CITY.

THE WATER DEPARTMENT SHALL FIELD LOCATE WATER VALVES ONE TIME DURING CONSTRUCTION WHEN REQUESTED BY THE CONTRACTOR. IT SHALL BE THE CONTRACTOR'S RESPONSIBILITY TO PRESERVE SUCH FIELD LOCATIONS DURING THE CONSTRUCTION PROCESS. WATER VALVES, WATER METER BOXES OR FIRE HYDRANTS DAMAGED DURING CONSTRUCTION SHALL BE REPAIRED BY THE CONTRACTOR AT HIS OWN EXPENSE.

WATER VALVES, METERS AND FIRE HYDRANTS SHALL BE ADJUSTED BY THE CONTRACTOR TO MEET FINAL GRADES, AS DIRECTED BY THE ENGINEER.

THE CONTRACTOR SHALL REMOVE EXISTING ROAD SIGNS THAT INTERFERE WITH CONSTRUCTION. SIGNS DAMAGED THRU NEGLIGENCE OF THE CONTRACTOR SHALL BE REPLACED BY THE CONTRACTOR AT NO COST TO THE CITY. THE CONTRACTOR SHALL STOCKPILE THE SIGNS ALONG THE R/W (AT A CENTRAL LOCATION) FOR REMOVAL BY CITY FORCES.

ALL EXISTING PAVEMENT AND CURB AND GUTTER WITHIN THE CONSTRUCTION LIMITS SHALL BE SAW CUT, FULL DEPTH, TO THE NEAT LINES SHOWN ON THE PLANS, OR TO THE NEAREST JOINT, AND REMOVED, UNLESS OTHERWISE NOTED. SAW CUTTING SHALL BE SUBSIDIARY TO THE BID ITEM "PAVEMENT REMOVAL".

ALL LABOR, MATERIALS, AND EQUIPMENT NECESSARY TO MAKE CONNECTIONS TO EXISTING PIPE OR EXISTING SMALL STRUCTURES SHALL NOT BE PAID FOR DIRECTLY; BUT SHALL BE SUBSIDIARY TO OTHER ITEMS OF THE CONTRACT.

Construction Traffic Notes

TRAFFIC TO BE CARRIED THROUGH CONSTRUCTION.
FOR TRAFFIC HANDLING AND CONSTRUCTION SEQUENCE SEE SH. NO. 54

INDEX OF SHEETS

- PART A:
- Title Sheet
 - Typical Sections
 - 6. 119th St. Road Plans
 - Coordinate Geometry Plans
 - 12. Storm Sewer Plan & Profiles
 - Curb & Gutter Details
 - Drive Entrance Details
 - Wheelchair Ramp Details
 - Sidewalk and Steps
 - Std. Type I Curb Inlet (L=5' or 10')
 - Curb Inlet Underdrain Details
 - 21. Concrete Manhole (Storm Sewer) Details
 - Miscellaneous Drainage Details
 - Schedule of Inlets and Manholes
 - 29. End Sections
 - 34. RCB Details (2-10'x6' Sta. 220+25)
 - 38. RCB Details (4'x3' Sta. 226+05)
 - RCB Auxiliary Details
 - Precast Concrete Box Culvert Details
 - Supports and Spacers for Reinforcing Steel
 - 43. Summary and Recapitulation of Quantities
 - 48. Erosion Control - BMP's
 - SWPPP Plan
 - 51. Landscape Plans
 - 53. Signing & Marking Plans
 - Traffic Handling and Construction Sequence
 - 68. Traffic Control Plans
 - 83. Cross-Sections (135th St.)

PART B: WATERLINE

- Title Sheet
- Key Map and General Notes
- Standard Water Assembly Details
- Miscellaneous Water Details
- Miscellaneous Details
- B9. Plan / Profile
- B12. Soil Erosion BMP Details

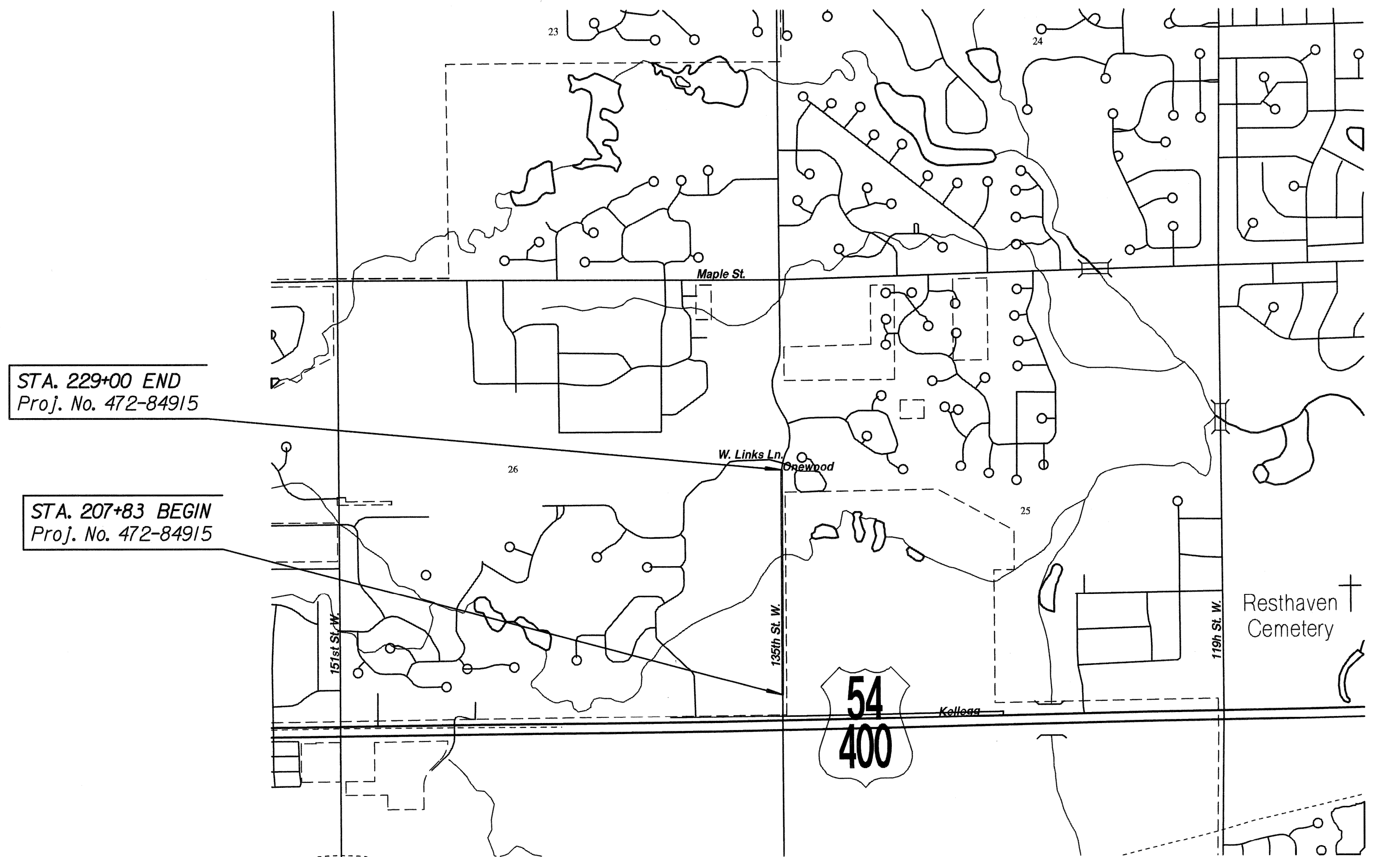
DESIGN DESIGNATION

AADT (2012) = 7,605
AADT (2035) = 8,979
DHV = 9.4%
T = 1%
V = 40 MPH
C of A = PARTIAL
Clear Zone = 6'

CONVENTIONAL SIGNS

COUNTY LINE	CENTER LINE OF PROJECT 50 1
CITY LIMITS	TERRACE
STATE OR NATIONAL LINE	CULVERTS
TOWNSHIP, SECTION or GRANT LINE	DROP INLET & STORM SEWER
PROPERTY LINE	ACCESS CONTROL
HIGHWAY FENCE	POWER POLE
EXISTING FENCE	TELEPHONE POLE
GUARDRAIL	MARSH
CONSTRUCTION LIMITS	HEDGE
RIGHT OF WAY LINE	TREES
TRAVELED WAY	PROFILE ELEVATION
RAILROADS	STREAM or CREEK

GROSS LENGTH OF PROJECT	2117.00 FT.	
EXCEPTIONS	0.00 FT.	
ADDITIONS	0.00 FT.	
NET LENGTH OF PROJECT	2117.00 FT.	0.40 MILES
NET LENGTH OF BRIDGES	0.00 FT.	0.00 MILES
NET LENGTH OF ROAD	2117.00 FT.	0.40 MILES



PLANS PREPARED BY:



RECOM. FOR APPROVAL-DATE
Dary J. Jansen 02/22/13
LOCAL PUBLIC OFFICIAL

KANSAS DEPARTMENT OF TRANSPORTATION