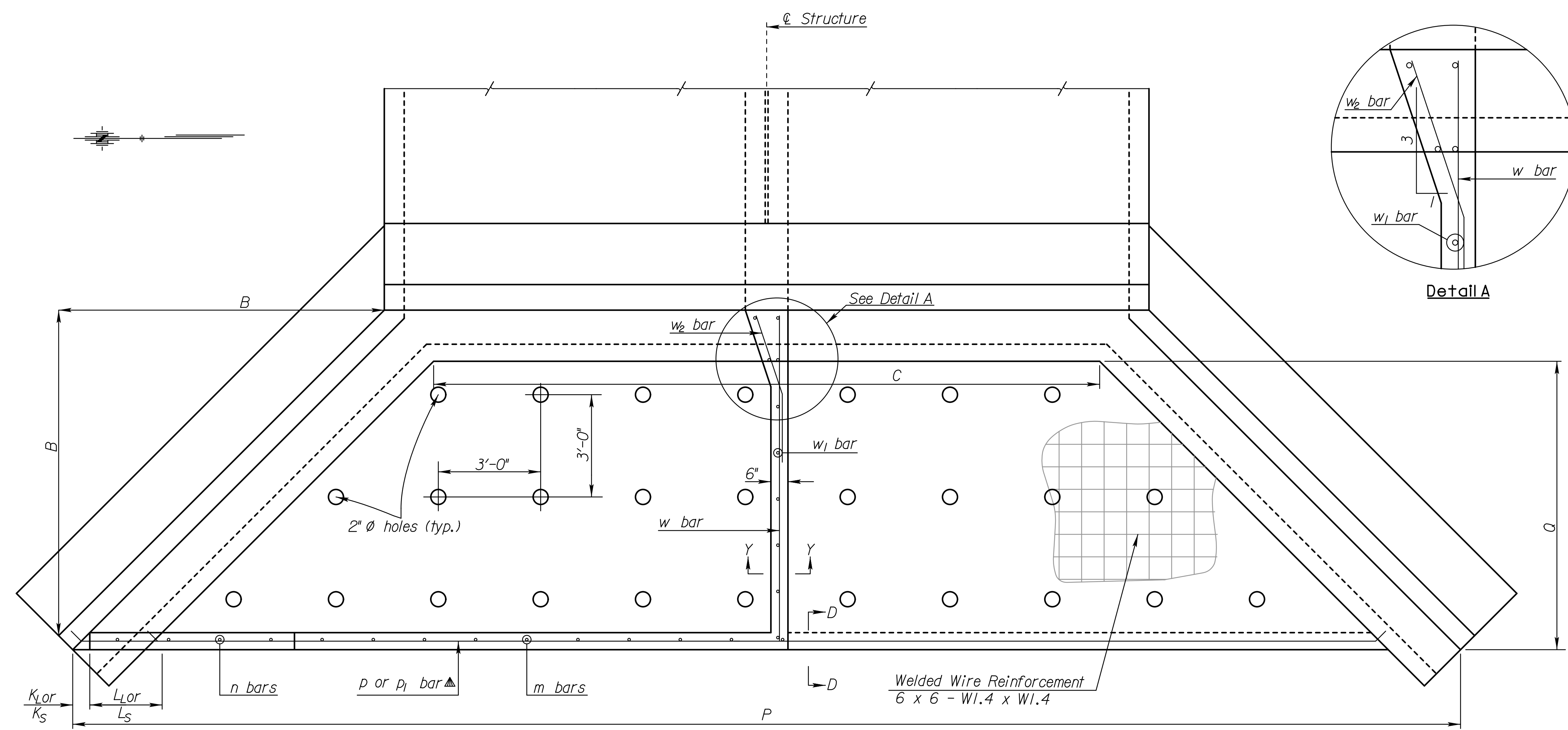
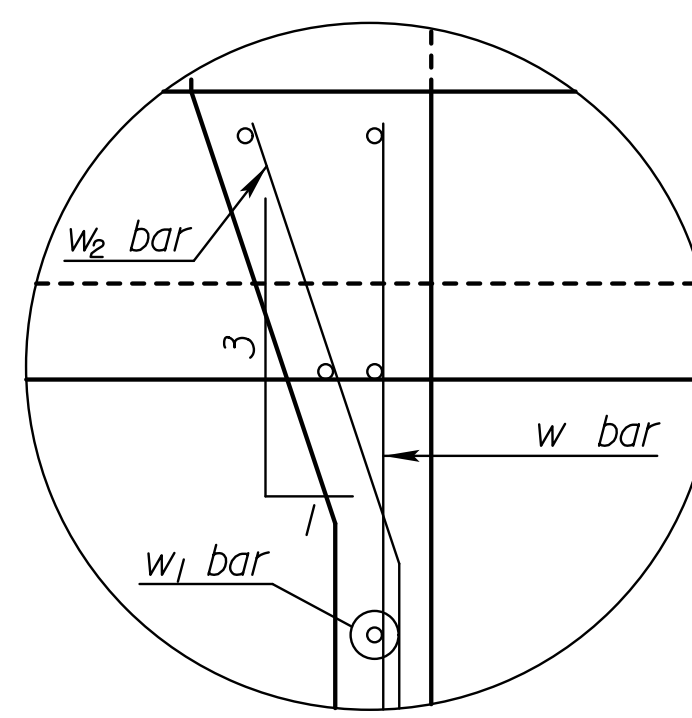


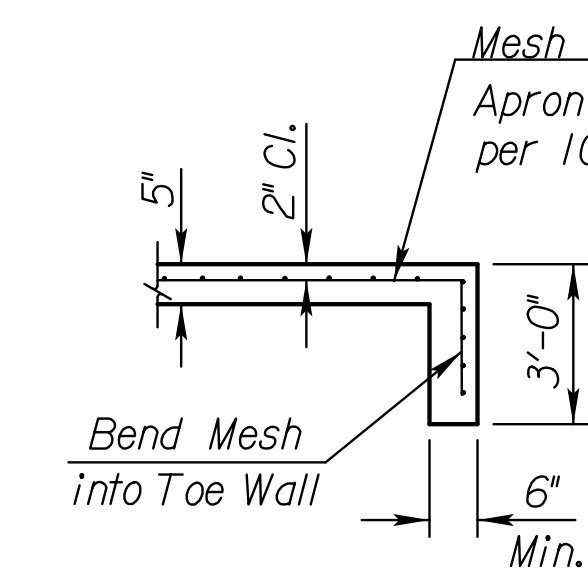
STATE	PROJECT NO.	YEAR	SHEET NO.	TOTAL SHEETS
KANSAS	472-84915	2013	33	83



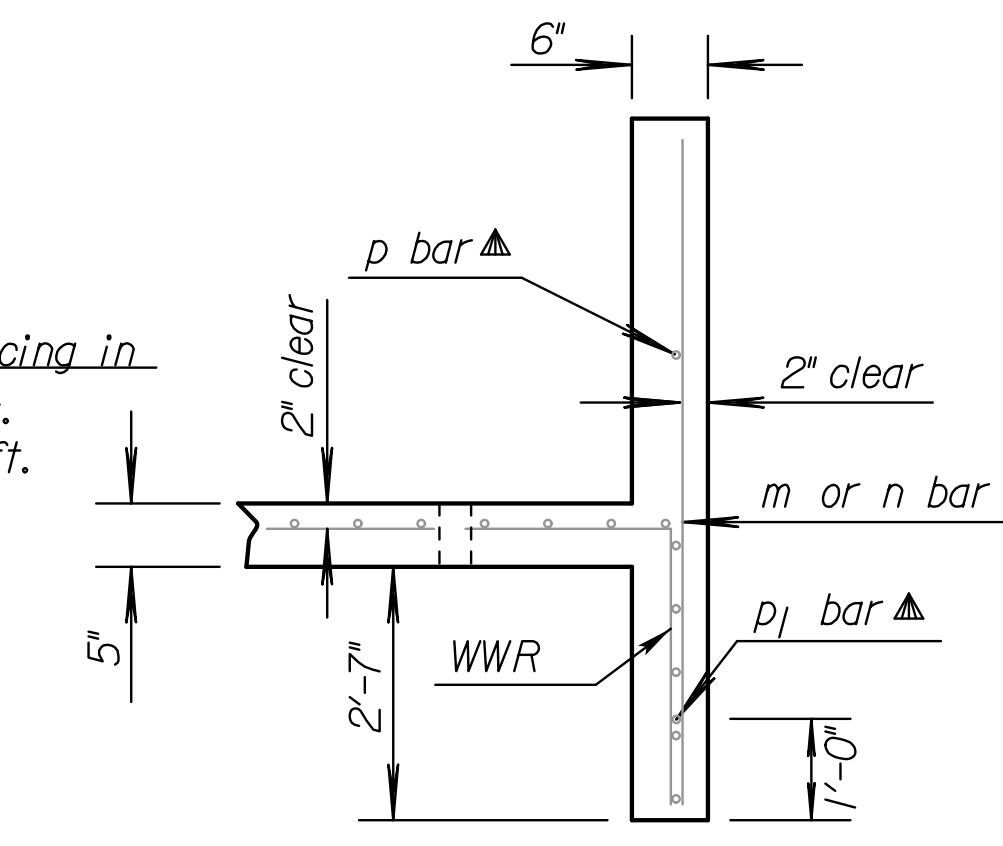
PLAN



Detail A



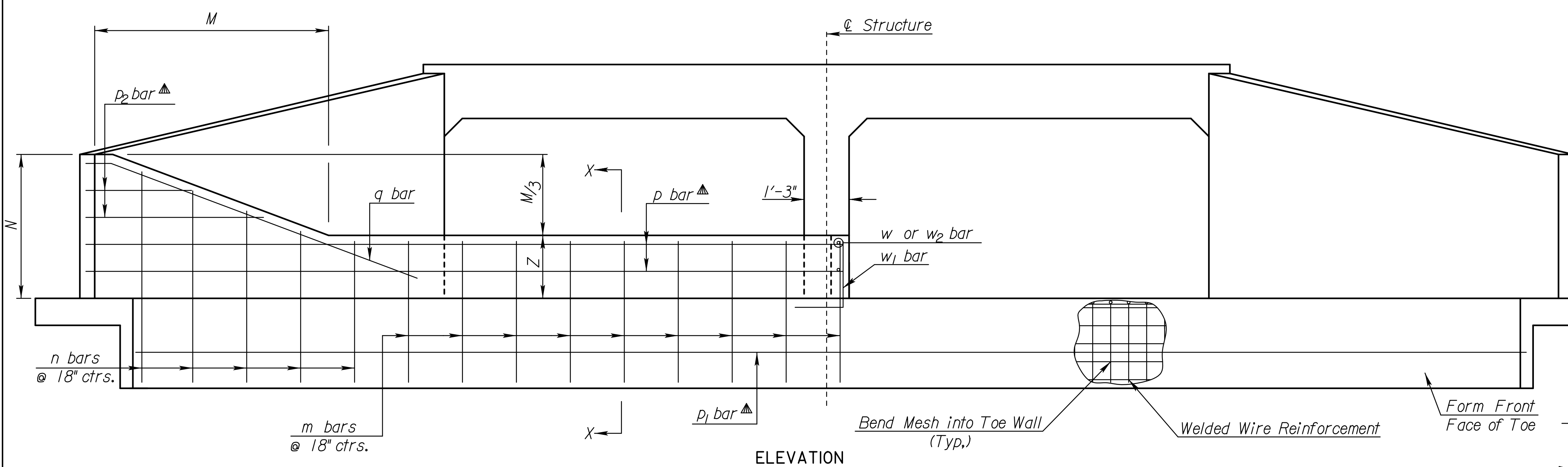
SECTION D-D



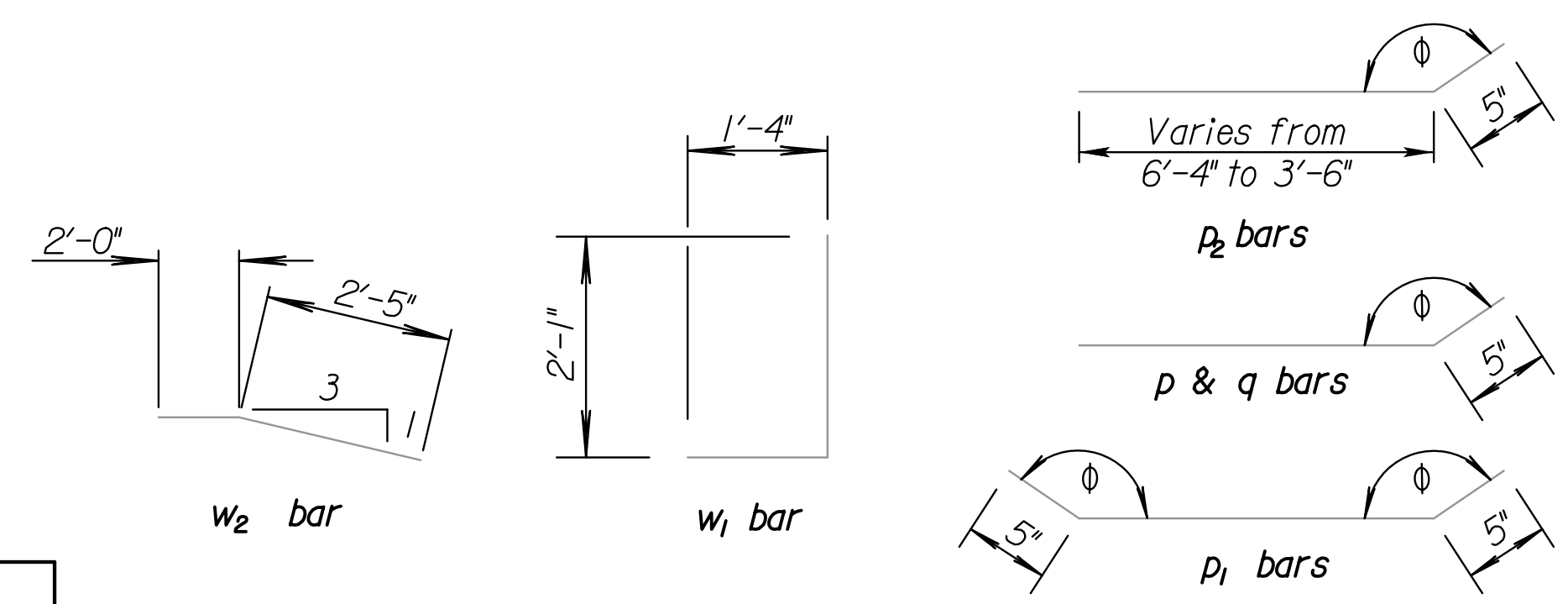
SECTION X-X

GENERAL NOTE
 CONCRETE: Concrete Grade 4.0 shall be used throughout. All exposed edges shall be finished with an edging tool.
 REINFORCING: All dimensions are to ϕ of bar except where noted. All reinforcing bars are No. 4. Reinforcing bars shall be Grade 60 billet steel. Minimum clearance on all reinforcement shall be 2".
 Welded wire reinforcement shall be paid as pounds of reinforcing steel. When holes in the apron are warranted by drainage conditions they shall be constructed as directed by the Engineer.

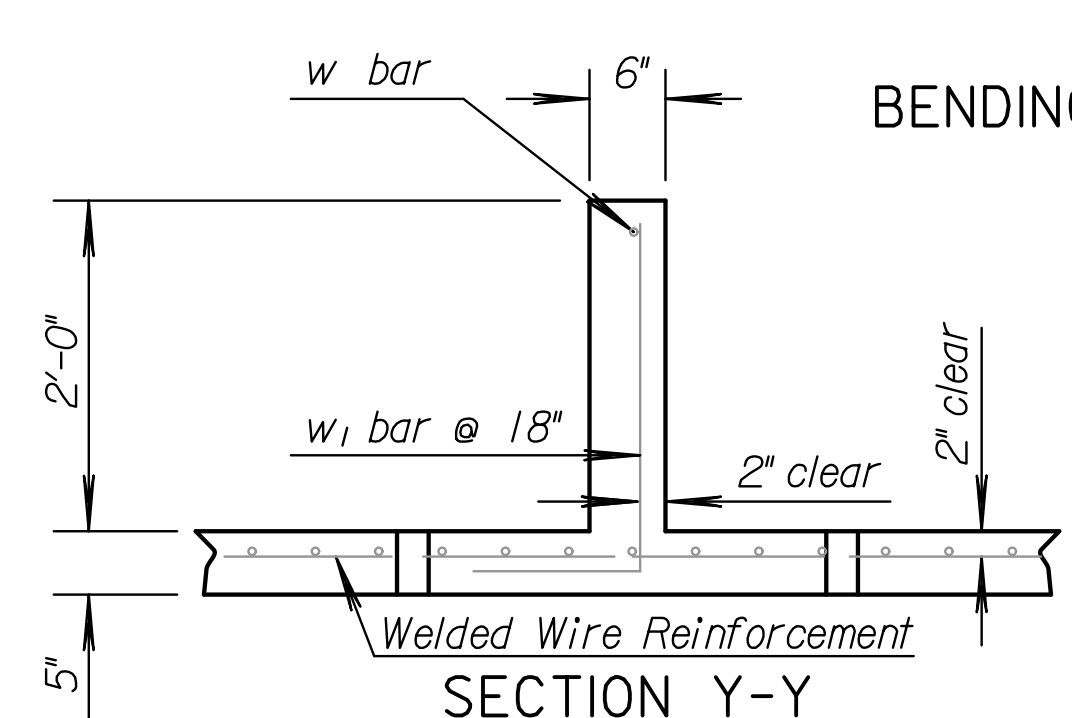
▲ Drill and grout p and q bars into wingwalls and p₁ bar into wing footings when the soil saver end wall is constructed separately from the wingwalls. Drilling and grouting shall be Subsidiary to the bid item "Reinforcing Steel".



ELEVATION



BENDING DIAGRAMS



SECTION Y-Y

* See Bending Diagram

STATION	SIDE Left				Skew θ°		Z=2'-0"					
Letter	B	C	K _L	K _S	L ₁	L _S	M	N	P	P ₁	P _S	Q
Dimension	9'-2 1/4"	19'-6 1/4"	0'-6"	0'-6"	2'-1 1/2"	2'-1 1/2"	8'-0"	4'-8"	39'-10 1/4"	N/A	N/A	8'-1 1/4"
Bar	m	n*	p*	p ₁ *	p ₂ *	q*	W	W ₁	W ₂	Sq. Ft. WWR	N/A	331 Sq. Ft.
Number	10	4	2	1	2	1	2	10	2	Grade 4.0 Conc.		6.48 Cu. Yd.
Length	4'-8"	Varies	20'-10"	36'-3"	Varies	10'-5"	9'-2"	3'-5"	4'-5"	Reinf. steel		223 Lbs.

Quantities include apron and soil saver end wall.

NO.	DATE	REVISIONS	BY	APP'D
2	04-28-05	Chg. Class to Grade concrete, WWR	S.W.K.	J.O.B.
1	08-01-00	Revised Drill & Grout Note	R.J.S.	J.O.B.

KANSAS DEPARTMENT OF TRANSPORTATION

SOIL SAVER FOR R.C. CULVERTS

RD520

DESIGNED KJW	6-10-05	APP'D James O. Brewer
DESIGN CK. []	DETAILED KJW	QUANTITIES KJW
	TRACE CK. []	TRACE CK. []

Drawn By: mlb
 Plotted: 18-APR-2013 16:26
 File: I:\2010\10281\Bridges\10281-2-10x6-Soil Saver.dgn