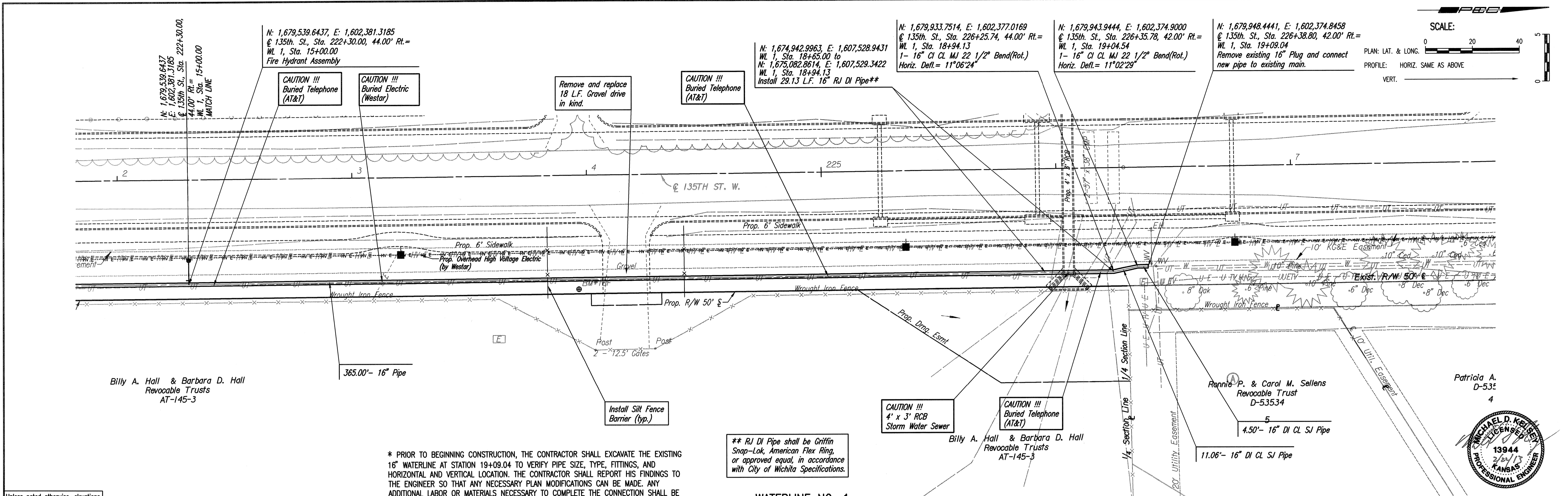


PLAN	CHECKED	DATE
	CHECKED	

PROFILE	CHECKED	DATE
	CHECKED	

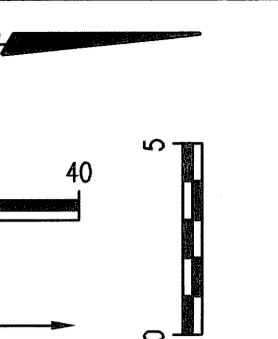
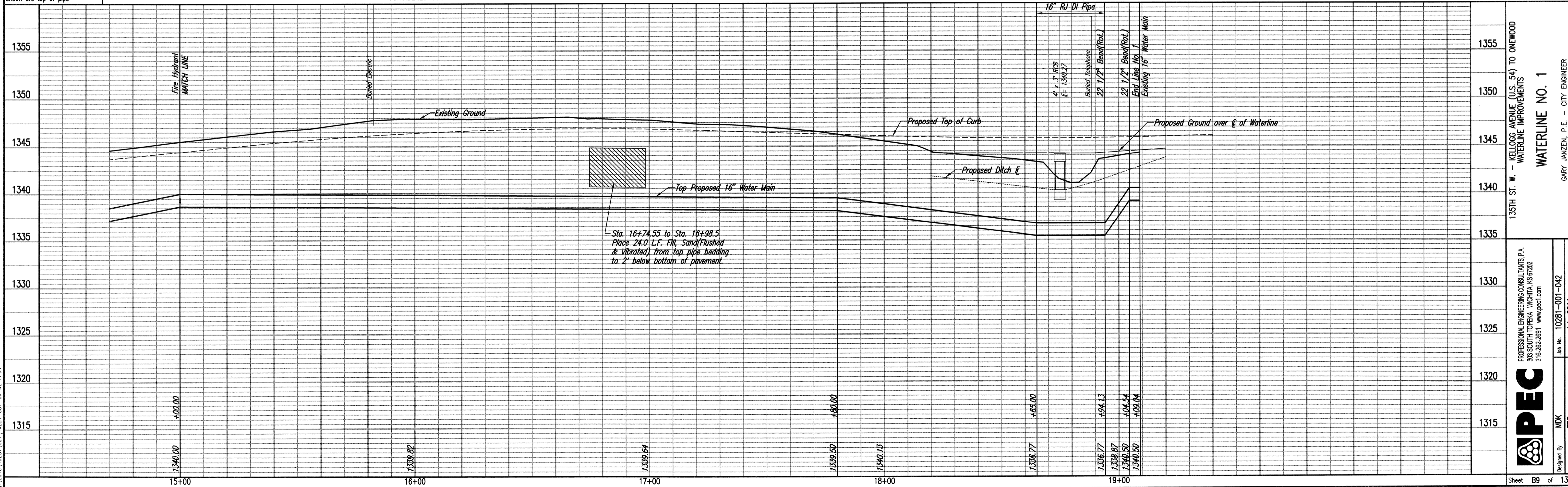
Sheet 02-20-2011, 9:10:37 AM by BEJ
 Plot Scale 1"=20'-00" 02-22-2011, 9:48:59 AM by BEJ
 O:\2010\10281\001\10281-001-C3 WL PPG4



Unless noted otherwise, elevations shown are top of pipe

* PRIOR TO BEGINNING CONSTRUCTION, THE CONTRACTOR SHALL EXCAVATE THE EXISTING 16" WATERLINE AT STATION 19+09.04 TO VERIFY PIPE SIZE, TYPE, FITTINGS, AND HORIZONTAL AND VERTICAL LOCATION. THE CONTRACTOR SHALL REPORT HIS FINDINGS TO THE ENGINEER SO THAT ANY NECESSARY PLAN MODIFICATIONS CAN BE MADE. ANY ADDITIONAL LABOR OR MATERIALS NECESSARY TO COMPLETE THE CONNECTION SHALL BE CONSIDERED SUBSIDIARY TO THE PROJECT.

** RJ DI Pipe shall be Griffin Snap-Lok, American Flex Ring, or approved equal, in accordance with City of Wichita Specifications.



Patricia A. D-532
4



135TH ST. W. - KELLOGG AVENUE (U.S. 54) TO ONEWOOD WATERLINE IMPROVEMENTS
WATERLINE NO. 1

MEPEC
 PROFESSIONAL ENGINEERING CONSULTANTS P.A.
 303 SOUTH TOPEKA WICHITA, KS 67202
 316-262-2891 www.mepec.com

Designed By: MDK
 TDS
 Job No. 10281-001-042
 Date July 2011

GARY JANZEN, P.E. - CITY ENGINEER
 CITY OF WICHITA PROJECT NO. 448-90579