

SKINNER

WICHITA

WATER

MAIN

MT. VERNON

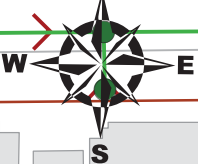
MH 5445-271  
Approx MH depth = 7.7 ft

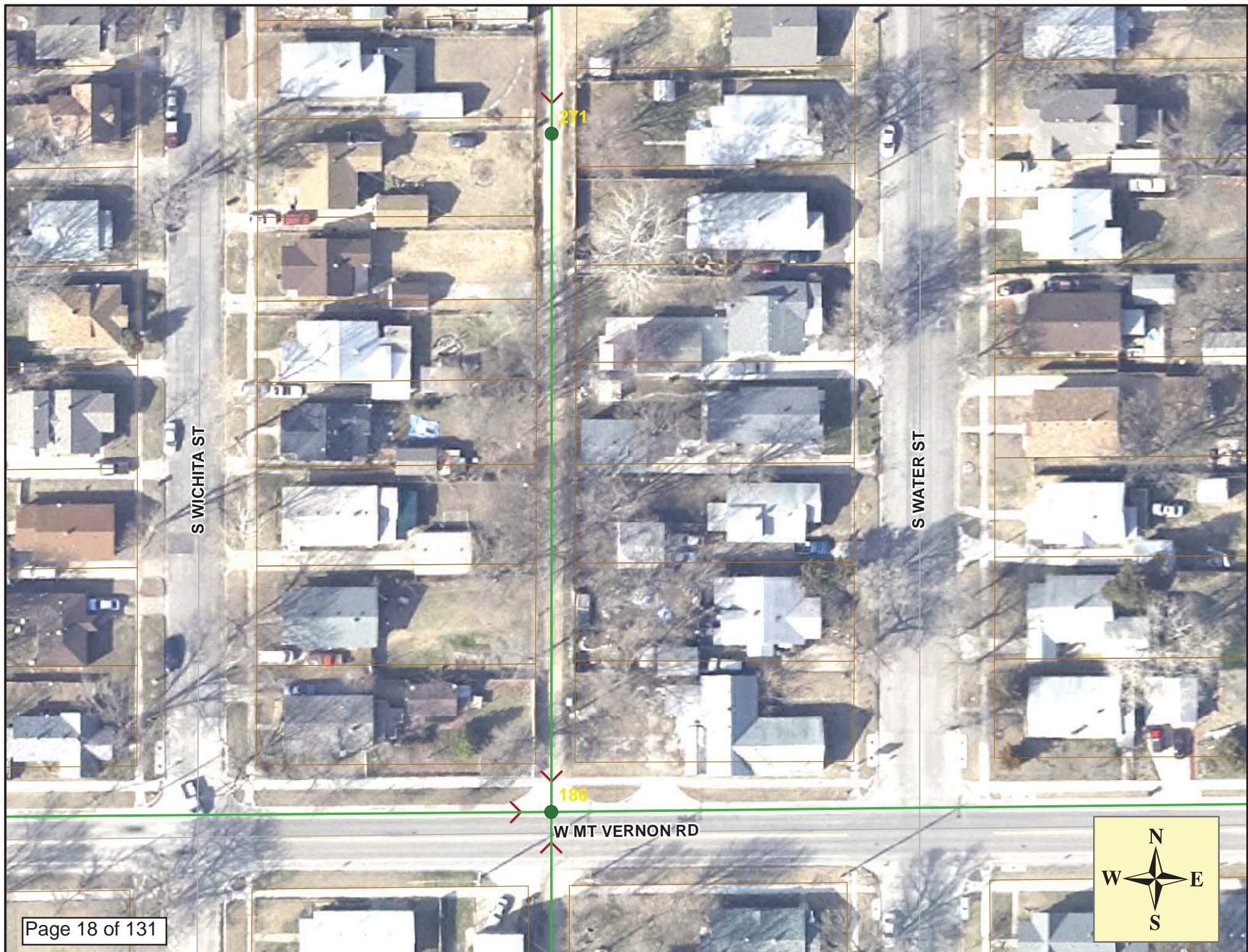
MH 5445-186  
Approx MH depth = 6.7 ft

Install 341 lf of 8" Cured-in-Place Liner  
from MH 5445-271 to MH 5445-186

**SITE 3**

Page 17 of 131







# Video Inspection Master Report

12/28/2012

7:46 AM

US Structure: 5445-271      1927 S WATER ST      Date Insp: 7/3/2012      Basin: C05D  
 DS Structure: 5445-186      1947 S WATER ST      Dir Televised:Upstream To Downstream

**Pipe Information**

Shape: Round      Length Status:      Project No. : B-089  
 Dia/Ht: 8      Material: VCP      Index:  
 Length: 340.6      Slope: 0.120      Surface:

Obs. #	VTR Counter	Distance	Location	Description	Rating	Obsrvd (gpm)	Ratings			Remain (gpm)
							Est. (gpm)	Struct	Clean	
1		0.0	5445-271	US Manhole						
2		10.4		Sealed Off Wye	1					
3		13.3		Sealed Off Wye	1					
4		24.1		Crack-Radial	5					
5		25.1		Mat. Chngs to PVC	1					
6		27.0	1931 S WATER	PVC Break-In Conn	1					
7		27.8		Mat. Chngs back to VCP	1					
8		34.1		Mat. Chngs to PVC	1					
9		35.2	1930 S WICHITA	PVC Break-In Conn	1					
10		35.8		Mat. Chngs to VCP	1					
11		38.4		Sealed Off Wye	1					
12		44.2		Crack-Radial	1					
13		49.7		Crack-Radial	2					
14		61.0		Sealed Off Wye	1					
15		63.7		Sealed Off Wye	1					
16		74.5		Crack-Radial	3					
17		86.3	1932 S WICHITA	Wye Service	1					
18		89.0	1935 S WATER	Wye Service	1					
19		97.4		Crack-Radial	3					
20		102.4		Crack-Radial	3					
21		105.1		Crack-Radial	3					
22		111.1	1934 S WICHITA	Wye Service	3					
23		114.3		Sealed Off Wye	1					
24		135.4		Mat. Chngs to PVC	1					
25		138.9	1937 S WATER	PVC Break-In Conn	1					
26		165.7	1936 S WICHITA	PVC Break-In Conn	1					
27		167.0		Mat. Chngs back to VCP	1					
28		168.5		Crack-Radial	3					
29		171.7		Observation Hole	1					
30		178.9		Crack-Radial	3					



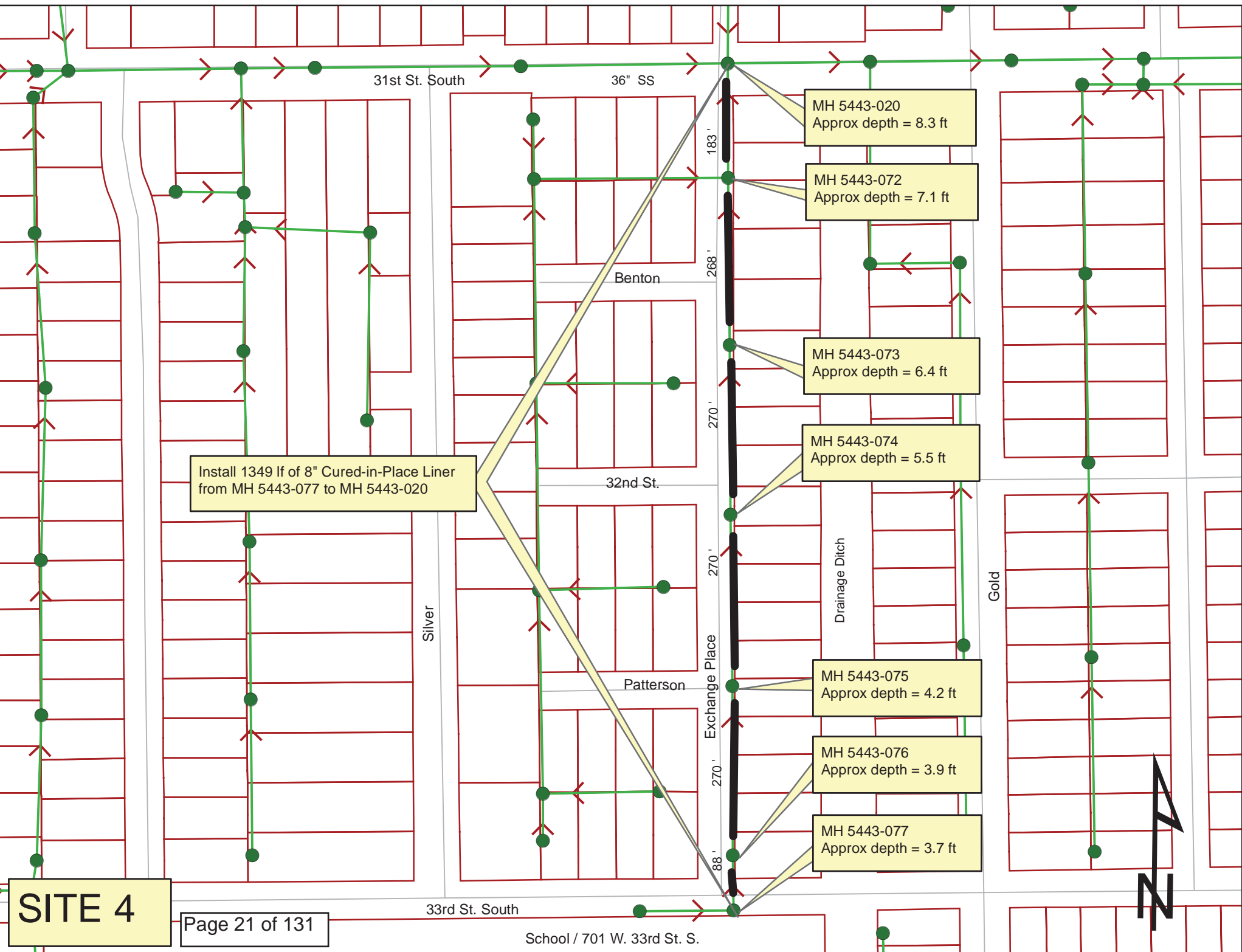
# Video Inspection Master Report

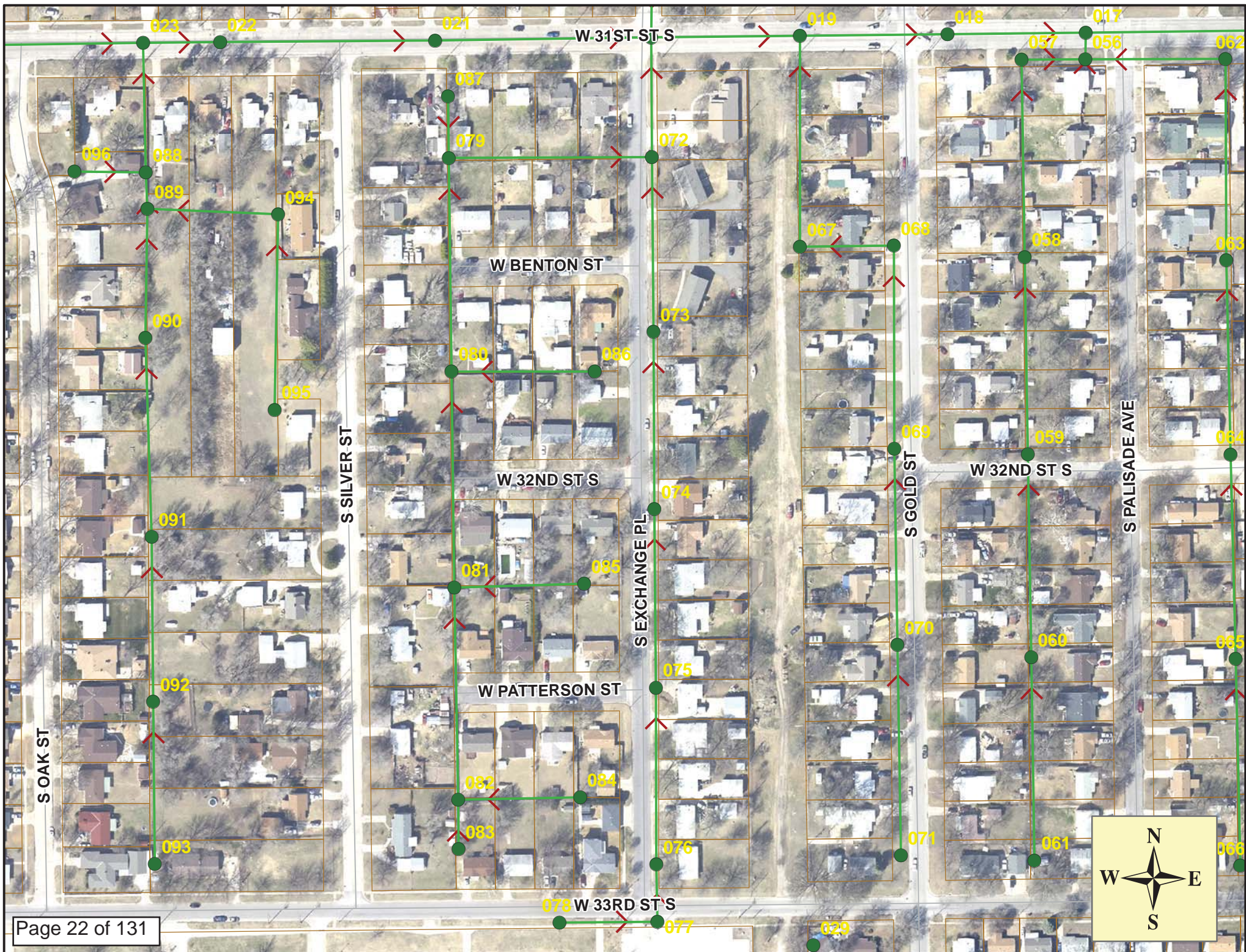
12/28/2012

7:46 AM

US Structure: 5445-271                      1927 S WATER ST                      Date Insp: 7/3/2012                      Basin: C05D  
 DS Structure: 5445-186                      1947 S WATER ST                      Dir Televised:Upstream To Downstream

31	182.9	1941 S WATER	Break-In Conn	3
		(connection to be replaced by Sewer Maintenance) -LML		
32	188.0		Sealed Off Wye	1
33	189.8		Sealed Off Wye	1
34	192.3	1948 S WICHITA	Break-In Conn	2
		(connection to be replaced by Sewer Maintenance) -LML		
35	213.6		Sealed Off Wye	1
36	216.3		Sealed Off Wye	1
37	227.5		Crack-Radial	2
38	239.4	1950 S WICHITA	Wye Service	2
39	240.7	1943 S WATER	Break-In Conn	1
40	264.6		Sealed Off Wye	1
41	267.1		Sealed Off Wye	1
42	290.0	1958 S WICHITA	Wye Service / roots inside	4
43	290.7		Mat. Chngs to PVC	1
44	291.5	1947 S WATER	PVC Break-In Conn	1
45	293.9		Mat. Chngs back to VCP	1
46	303.5		Crack-Radial	3
47	314.3		Sealed Off Wye	1
48	316.9		Sealed Off Wye	1
		Bad cracks in the pipe right at the manhole wall -LML		
49	341.1	5445-271	DS Manhole	1







# Video Inspection Master Report

10/29/2012

8:13 AM

US Structure: 5443-077      701 W 33RD ST S      Date Insp: 8/10/2011      Basin: WC01G

DS Structure: 5443-076      3356 S EXCHANGE ST      Dir Televised: Upstream To Downstream

**Pipe Information**

Shape: Round      Length Status:      Project No. : G-193  
 Dia/Ht: 8      Material: VCP      Index:  
 Length: 87.7      Slope: 0.205      Surface:

Obs. #	VTR Counter	Distance	Location	Description	Rating	Obsrvd (gpm)	Ratings			Remain (gpm)
							Est. (gpm)	Struct	Clean	
1		0.0	5443-077	US Manhole	1	0.000	0	0	0.000	
2		0.0	Joint	Offset	3	0.010	20	0	0.010	
3		12.8	Joint	Offset	3	0.010	20	0	0.010	
4		34.2		Roots	3	0.008	5	8	0.008	
5		37.1		Roots	3	0.008	5	8	0.008	
6		39.5		Roots	3	0.008	5	8	0.008	
7		42.8		Roots	3	0.008	5	8	0.008	
8		45.9		Roots	2	0.004	2	4	0.004	
9		48.9		Roots	3	0.008	5	8	0.008	
10		52.1		Roots	3	0.008	5	8	0.008	
11		53.6		Debris	3	0.000	0	0	0.000	
12		54.6		Roots	5	0.030	18	100	0.030	
13		58.8	Camera didn't get past root ball.	Roots	5	0.030	18	100	0.030	

There was a prior televising and the camera made it completely through on that setup. There are no taps on the pipe. -LML

Upstream 14 lf of pipe was replaced "by others" to repair grade on the pipe.  
 Pipe should be ready for CIPP -LML



## Video Inspection Master Report

10/29/2012

8:13 AM

US Structure: 5443-076                      3356 S EXCHANGE ST                      Date Insp: 8/10/2011                      Basin: WC01G

DS Structure: 5443-075                      3332 S EXCHANGE ST                      Dir Televised: Upstream To Downstream

**Pipe Information**

Shape: Round	Length Status:	Project No. : G-193
Dia/Ht: 8	Material: VCP	Index:
Length: 270.5	Slope: 0.152	Surface:

Obs. #	VTR Counter	Distance	Location	Description	Rating	Obsrvd (gpm)	Ratings			Remain (gpm)
							Est. (gpm)	Struct	Clean	
1		0.0	5443-076	US Manhole	1	0.000	0	0	0.000	
2		0.1	3356 S EXCHANGE	Break-In Conn	2	0.002	0	0	0.002	
3		0.1		Roots	3	0.008	5	8	0.008	
4		8.0		Roots	3	0.008	5	8	0.008	
5		11.2		Roots	2	0.004	2	4	0.004	
6		13.9		Roots	3	0.008	5	8	0.008	
7		17.2		Roots	3	0.008	5	8	0.008	
8		20.3		Roots	2	0.004	2	4	0.004	
9		21.7		Wye Service	2	0.000	0	0	0.000	
10		38.4		Other	1	0.000	0	0	0.000	
11		42.7		Other	1	0.000	0	0	0.000	
12		64.6	Joint	Offset	3	0.010	20	0	0.010	
13		68.0	Joint	Offset	3	0.010	20	0	0.010	
14		85.3	3350 S EXCHANGE	Wye Service	1	0.000	0	0	0.000	
15		102.2		Roots	2	0.004	2	4	0.004	
16		117.2		Roots	3	0.008	5	8	0.008	
17		141.3		Roots	2	0.004	2	4	0.004	
18		143.0	3344 S EXCHANGE	Wye Service	1	0.000	0	0	0.000	
19		202.7	3338 S EXCHANGE	Wye Service	2	0.000	0	0	0.000	
20		259.3		Roots	3	0.008	5	8	0.008	
21		260.4	3332 S EXCHANGE	Break-In Conn	1	0.001	0	0	0.001	
22		270.1	5443-075	DS Manhole	1	0.000	0	0	0.000	



# Video Inspection Master Report

10/29/2012

8:13 AM

US Structure: 5443-075      3332 S EXCHANGE ST      Date Insp: 8/10/2011      Basin: WC01G

DS Structure: 5443-074      3302 S EXCHANGE ST      Dir Televised: Upstream To Downstream

**Pipe Information**

Shape: Round      Length Status:      Project No. : G-193  
 Dia/Ht: 8      Material: VCP      Index:  
 Length: 270.5      Slope: 0.148      Surface:

Obs. #	VTR Counter	Distance	Location	Description	Rating	Obsrvd (gpm)	Ratings			Remain (gpm)
							Est. (gpm)	Struct	Clean	
1		0.0	5443-075	US Manhole	1	0.000	0	0	0.000	
2		13.5		Roots	3	0.008	5	8	0.008	
3		16.6		Roots	3	0.008	5	8	0.008	
4		19.7		Roots	3	0.008	5	8	0.008	
5		37.6		Roots	3	0.008	5	8	0.008	
6		41.0		Roots	3	0.008	5	8	0.008	
7		48.8	3326 S EXCHANGE	Break-In Conn	1	0.001	0	0	0.001	
8		55.7		Roots	3	0.008	5	8	0.008	
9		59.0		Roots	3	0.008	5	8	0.008	
10		60.5	3320 S EXCHANGE	Wye Service	2	0.000	0	0	0.000	
11		61.8		Roots	3	0.008	5	8	0.008	
12		70.5		Roots	3	0.008	5	8	0.008	
13		73.9		Roots	3	0.008	5	8	0.008	
14		80.0		Roots	3	0.008	5	8	0.008	
15		85.7		Roots	3	0.008	5	8	0.008	
16		97.9		Roots	3	0.008	5	8	0.008	
17		119.9	3314 S EXCHANGE	Wye Service	2	0.000	0	0	0.000	
18		167.4		Roots	2	0.004	2	4	0.004	
19		170.5		Roots	3	0.008	5	8	0.008	
20		173.3		Roots	3	0.008	5	8	0.008	
21		176.6		Roots	2	0.004	2	4	0.004	
22		177.2	3308 S EXCHANGE	Wye Service	2	0.000	0	0	0.000	
23		182.7		Roots	2	0.004	2	4	0.004	
24		185.0		Roots	3	0.008	5	8	0.008	
25		188.7		Roots	3	0.008	5	8	0.008	
26		200.6		Roots	3	0.008	5	8	0.008	
27		209.7		Roots	3	0.008	5	8	0.008	
28		219.0		Roots	2	0.004	2	4	0.004	
29		223.7	3302 S EXCHANGE	Break-In Conn	1	0.001	0	0	0.001	
30		224.8		Roots	3	0.008	5	8	0.008	
31		247.1		Wye Service	2	0.000	0	0	0.000	
32		269.5	5443-074	DS Manhole	1	0.000	0	0	0.000	



# Video Inspection Master Report

10/29/2012

8:13 AM

US Structure: 5443-074      3302 S EXCHANGE ST      Date Insp: 8/10/2011      Basin: WC01G  
 DS Structure: 5443-073      3240 S EXCHANGE ST      Dir Televised: Upstream To Downstream

**Pipe Information**

Shape: Round      Length Status:      Project No. : G-193  
 Dia/Ht: 8      Material: VCP      Index:  
 Length: 270.5      Slope: 0.152      Surface:

Obs. #	VTR Counter	Distance	Location	Description	Rating	Obsrvd (gpm)	Ratings			Remain (gpm)
							Est. (gpm)	Struct	Clean	
1		0.0	5443-074	US Manhole	1	0.000	0	0	0.000	
2		35.9		Wye Service	2	0.000	0	0	0.000	
3		101.8	3258 S EXCHANGE	Wye Service	1	0.000	0	0	0.000	
4		112.9		Roots	3	0.008	5	8	0.008	
5		118.9		Roots	3	0.008	5	8	0.008	
6		121.9		Roots	3	0.008	5	8	0.008	
7		130.7	3252 S EXCHANGE	Break-In Conn	1	0.001	0	0	0.001	
8		146.1		Roots	3	0.008	5	8	0.008	
9		155.3		Roots	3	0.008	5	8	0.008	
10		156.9	3252 S EXCHANGE	Wye Service	2	0.000	0	0	0.000	
11		158.2		Roots	3	0.008	5	8	0.008	
12		161.3		Roots	3	0.008	5	8	0.008	
13		164.5		Roots	3	0.008	5	8	0.008	
14		167.3		Roots	3	0.008	5	8	0.008	
15		173.4		Roots	2	0.004	2	4	0.004	
16		176.5		Roots	3	0.008	5	8	0.008	
17		185.4		Roots	3	0.008	5	8	0.008	
18		191.6		Roots	3	0.008	5	8	0.008	
19		195.0		Roots	3	0.008	5	8	0.008	
20		198.0		Roots	3	0.008	5	8	0.008	
21		200.5		Roots	3	0.008	5	8	0.008	
22		203.6		Roots	3	0.008	5	8	0.008	
23		208.4	3246 S EXCHANGE	Break-In Conn	1	0.001	0	0	0.001	
24		210.1		Roots	3	0.008	5	8	0.008	
25		212.9		Roots	3	0.008	5	8	0.008	
26		220.5		Wye Service	1	0.000	0	0	0.000	
27		251.5	3240 S EXCHANGE	Break-In Conn	1	0.001	0	0	0.001	
28		269.7	5443-073	DS Manhole	1	0.000	0	0	0.000	



# Video Inspection Master Report

10/29/2012

8:13 AM

US Structure: 5443-073                      3240 S EXCHANGE ST                      Date Insp: 8/10/2011                      Basin: WC01G  
 DS Structure: 5443-072                      3202 S EXCHANGE ST                      Dir Televised: Upstream To Downstream

**Pipe Information**

Shape: Round                      Length Status:                      Project No. : G-193  
 Dia/Ht: 8                      Material: VCP                      Index:  
 Length: 266.0                      Slope: 0.150                      Surface:

Obs. #	VTR Counter	Distance	Location	Description	Rating	Obsrvd (gpm)	Ratings			Remain (gpm)
							Est. (gpm)	Struct	Clean	
1		0.0	5443-073	US Manhole	1		0.000	0	0	0.000
2		6.0	3240 S EXCHANGE	Wye Service	2		0.000	0	0	0.000
3		12.2		Roots	3		0.008	5	8	0.008
4		58.8		Wye Service	1		0.000	0	0	0.000
5		71.3	3238 S EXCHANGE	Break-In Conn	1		0.001	0	0	0.001
6		112.3		Roots	3		0.008	5	8	0.008
7		115.0	3236 S EXCHANGE	Break-In Conn	3		0.004	2	0	0.004
8		125.1		Roots	3		0.008	5	8	0.008
9		128.1		Roots	3		0.008	5	8	0.008
10		132.6	3232 S EXCHANGE	Wye Service	1		0.000	0	0	0.000
11		134.7		Roots	3		0.008	5	8	0.008
12		136.7		Roots	3		0.008	5	8	0.008
13		140.1		Roots	3		0.008	5	8	0.008
14		166.5		Roots	3		0.008	5	8	0.008
15		168.8		Roots	3		0.008	5	8	0.008
16		190.7		Roots	3		0.008	5	8	0.008
17		193.3		Wye Service	1		0.000	0	0	0.000
18		193.4		Roots	3		0.008	5	8	0.008
19		197.4		Roots	3		0.008	5	8	0.008
20		205.7		Roots	3		0.008	5	8	0.008
21		229.6	3228 S EXCHANGE	Break-In Conn	1		0.001	0	0	0.001
22		238.3		Roots	3		0.008	5	8	0.008
23		242.2		Roots	3		0.008	5	8	0.008
24		247.4		Roots	3		0.008	5	8	0.008
25		250.2		Roots	3		0.008	5	8	0.008
26		253.9		Roots	3		0.008	5	8	0.008
27		259.2		Wye Service	1		0.000	0	0	0.000
28		262.6		Roots	3		0.008	5	8	0.008
29		267.9	5443-072	DS Manhole	2		0.000	0	0	0.000



## Video Inspection Master Report

10/29/2012

8:13 AM

**US Structure:** 5443-072      **3202 S EXCHANGE ST**      **Date Insp:** 11/17/2011      **Basin:** WC01G  
**DS Structure:** 5444-020      **514 W 31ST ST S**      **Dir Televised:** Upstream To Downstream

**Pipe Information**

<b>Shape:</b>	Round	<b>Length Status:</b>	Project No. : G-193
<b>Dia/Ht:</b>	8	<b>Material:</b>	VCP
<b>Length:</b>	182.5	<b>Slope:</b>	0.148
		<b>Surface:</b>	

**Obs. VTR**

Obs. #	Counter	Distance	Location	Description	Rating	Obsrvd (gpm)	Ratings			Remain (gpm)
							Est. (gpm)	Struct	Clean	
1		0.0	5443-072	US Manhole	1	0.000	0	0	0.000	
2		20.6		Roots	2	0.004	2	4	0.004	
3		51.5	3202 SOUTH EXCHANGE	Break-In Conn	2	0.002	0	0	0.002	
4		65.1		Sealed Off Wye	1	0.000	0	0	0.000	
5		113.8	3202 SOUTH EXCHANGE	Break-In Conn	1	0.001	0	0	0.001	
6		128.7		Sealed Off Wye	1	0.000	0	0	0.000	
7		182.6	5443-020	DS Manhole	1					