

MH 5646-112
Approx depth = 6.7 ft

MH 5646-113
Approx depth = 6.5 ft

MH 5646-114
Approx depth = 6.4 ft

MH 5646-115
Approx depth = 6.5 ft

MH 5646-117
Approx depth = 7.3 ft

Install 770 lf of 8" Cured-in-Place Liner from MH 5646-117 to MH 5646-112

MH 5646-116
Abandon Manhole (in pavement) (line through the manhole and abandon the manhole over the liner, per City Spec)
Approx depth = 6.7 ft

SEE TV LOG

SITE 5





Video Inspection Master Report

5/9/2012

10:15 AM

US Structure: 5646-117 655 S HILLSIDE AVE Date Insp: 11/15/2011 Basin: EC01F
 DS Structure: 5646-116 656 S LORRAINE ST Dir Televised: Upstream To Downstream

Pipe Information

Shape: Round Length Status: Project No. : C-023
 Dia/Ht: 8 Material: VCP Index:
 Length: 185.5 Slope: 0.400 Surface:

Obs. #	VTR Counter	Distance	Location	Description	Rating	Ratings				
						Obsrvd (gpm)	Est. (gpm)	Struct	Clean	Remain (gpm)
1		0.0		5646-117 US Manhole	1	0.000		0	0	0.000
2		6.0	655 S HILLSIDE	North Wye Service	2	Looks active - LML				
3		65.5		Crack-Radial	3	0.004		5	0	0.004
4		78.4		Crack-Radial	3	0.004		5	0	0.004
5		83.8		Crack-Radial	3	0.004		5	0	0.004
6		88.4		Crack-Radial	4	0.008		10	0	0.008
7		96.5		Crack-Radial	3	0.004		5	0	0.004
8		99.0		Crack-Radial	3	0.004		5	0	0.004
9		112.3		Crack-Radial	3	0.004		5	0	0.004
10		125.9	656 S LORRAINE	North Break-In Conn	1	Looks active - LML				
11		148.5		Crack-Radial	3	0.004		5	0	0.004
12		184.9		5646-116 DS Manhole	1	0.000		0	0	0.000

MANHOLE 5646-116: Abandon Manhole means to remove the top 4 feet of the manhole and fill the manhole with sand (flushed & vibrated). Pavement removal and replacement cost shall be subsidiary. Contractor is responsible to ensure that the liner in the bottom of the manhole is secure and stable for the load of the abandonment. -LML

Video Inspection Master Report

5/9/2012

10:15 AM

US Structure: 5646-116 656 S LORRAINE ST Date Insp: 11/15/2011 Basin: EC01F
 DS Structure: 5646-115 655 S LORRAINE ST Dir Televised: Upstream To Downstream

Pipe Information

Shape: Round Length Status: Project No. : C-023
 Dia/Ht: 8 Material: VCP Index:
 Length: 171.0 Slope: 0.400 Surface:

Obs. #	VTR Counter	Distance	Location	Description	Rating	Obsrvd (gpm)	Ratings			Remain (gpm)
							Est. (gpm)	Struct	Clean	
1		0.0		US Manhole	1	0.000	0	0	0.000	
2		10.9		Crack-Radial	3	0.004	5	0	0.004	
3		15.8		Roots	2	0.004	2	4	0.004	
4		18.3		Roots	1	0.002	1	1	0.002	
5		26.2		Roots	2	0.004	2	4	0.004	
6		26.6		Crack-Radial	3	0.004	5	0	0.004	
7		31.5		Roots	3	0.008	5	8	0.008	
8		55.0		Roots	1	0.002	1	1	0.002	
9		76.5		Crack-Radial	3	0.004	5	0	0.004	
10		86.4		Crack-Radial	2	0.002	2	0	0.002	
11		102.0		Roots	1	0.002	1	1	0.002	
12		171.7		DS Manhole	1	0.000	0	0	0.000	

No taps

MANHOLE 5646-116: Abandon Manhole means to remove the top 4 feet of the manhole and fill the manhole with sand (flushed & vibrated). Pavement removal and replacement cost shall be subsidiary. Contractor is responsible to ensure that the liner in the bottom of the manhole is secure and stable for the load of the abandonment. -LML

Video Inspection Master Report

5/9/2012

10:15 AM

US Structure: 5646-115 655 S LORRAINE ST Date Insp: 11/15/2011 Basin: EC01F
 DS Structure: 5646-114 3007 E GILBERT ST Dir Televised: Upstream To Downstream

Pipe Information

Shape: Round Length Status: Project No. : C-018
 Dia/Ht: 8 Material: VCP Index:
 Length: 33.6 Slope: 0.400 Surface:

Obs. #	VTR Counter	Distance	Location	Description	Rating	Obsrvd (gpm)	Ratings			Remain (gpm)
							Est. (gpm)	Struct	Clean	
1		0.0		US Manhole	1	0.000	0	0	0.000	
2		7.6		Crack-Radial	5	0.010	18	0	0.010	
3		18.2		Crack-Radial	2	0.002	2	0	0.002	
4		20.5		Crack-Radial	3	0.004	5	0	0.004	
5		23.3		Crack-Radial	3	0.004	5	0	0.004	
6		25.7		Crack-Radial	2	0.002	2	0	0.002	
7		28.2		Crack-Radial	2	0.002	2	0	0.002	
8		33.5		DS Manhole	0	0.000	0	0	0.000	

No taps

Video Inspection Master Report

5/9/2012

10:15 AM

US Structure: 5646-114 3007 E GILBERT ST Date Insp: 11/15/2011 Basin: EC01F
 DS Structure: 5646-113 657 S CHAUTAUQUA ST Dir Televised: Upstream To Downstream

Pipe Information

Shape: Round Length Status: Project No. : C-018
 Dia/Ht: 8 Material: VCP Index:
 Length: 324.0 Slope: 0.400 Surface:

Obs. #	VTR Counter	Distance	Location	Description	Rating	Obsrvd (gpm)	Ratings			Remain (gpm)
							Est. (gpm)	Struct	Clean	
1		0.0	5646-114	US Manhole	1	0.000	0	0	0.000	
2		10.1		Crack-Radial	2	0.002	2	0	0.002	
3		12.4		Crack-Radial	3	0.004	5	0	0.004	
4		15.1		Crack-Radial	1	0.001	1	0	0.001	
5		23.1		Crack-Radial	1	0.001	1	0	0.001	
6		25.7		Crack-Radial	2	0.002	2	0	0.002	
7		30.7		Crack-Radial	5	0.010	18	0	0.010	
8		38.5		Crack-Radial	3	0.004	5	0	0.004	
9		41.1		Crack-Radial	3	0.004	5	0	0.004	
10		48.7		Crack-Radial	2	0.002	2	0	0.002	
11		64.2		Crack-Radial	1	0.001	1	0	0.001	
12		66.7		Crack-Radial	3	0.004	5	0	0.004	
13		71.6		Crack-Radial	3	0.004	5	0	0.004	
14		76.7		Crack-Radial	3	0.004	5	0	0.004	
15		79.2		Crack-Radial	3	0.004	5	0	0.004	
16		84.1		Crack-Radial	4	0.008	10	0	0.008	
17		86.9		Crack-Radial	3	0.004	5	0	0.004	
18		89.4		Crack-Radial	1	0.001	1	0	0.001	
19		91.8		Crack-Radial	4	0.008	10	0	0.008	
20		96.9		Crack-Radial	3	0.004	5	0	0.004	
21		106.9		Crack-Radial	2	0.002	2	0	0.002	
22		109.6		Crack-Radial	3	0.004	5	0	0.004	
23		114.7		Crack-Radial	3	0.004	5	0	0.004	
24		117.1		Crack-Radial	1	0.001	1	0	0.001	
25		119.6		Crack-Radial	3	0.004	5	0	0.004	
26		122.2		Crack-Radial	1	0.001	1	0	0.001	
27		124.8		Crack-Radial	2	0.002	2	0	0.002	
28		127.0		Crack-Radial	2	0.002	2	0	0.002	
29		129.6		Crack-Radial	4	0.008	10	0	0.008	
30		132.4		Crack-Radial	3	0.004	5	0	0.004	
31		134.9		Crack-Radial	4	0.008	10	0	0.008	
32		137.0		Crack-Radial	2	0.002	2	0	0.002	
33		142.3		Crack-Radial	3	0.004	5	0	0.004	
34		152.5		Crack-Radial	4	0.008	10	0	0.008	
35		154.8		Crack-Radial	3	0.004	5	0	0.004	
36		162.5		Crack-Radial	3	0.004	5	0	0.004	
37		167.5		Crack-Radial	4	0.008	10	0	0.008	

Video Inspection Master Report

5/9/2012

10:15 AM

US Structure: 5646-114 3007 E GILBERT ST Date Insp: 11/15/2011 Basin: EC01F
 DS Structure: 5646-113 657 S CHAUTAUQUA ST Dir Televised: Upstream To Downstream

38	172.6	Crack-Radial	2	0.002	2	0	0.002
39	179.9	Crack-Radial	3	0.004	5	0	0.004
40	185.1	Crack-Radial	3	0.004	5	0	0.004
41	187.9	Crack-Radial	2	0.002	2	0	0.002
42	190.0	Crack-Radial	2	0.002	2	0	0.002
43	200.2	Crack-Radial	5	0.010	18	0	0.010
44	202.6	Crack-Radial	2	0.002	2	0	0.002
45	205.1	Crack-Radial	3	0.004	5	0	0.004
46	208.0	Crack-Radial	3	0.004	5	0	0.004
47	210.3	Crack-Radial	3	0.004	5	0	0.004
48	220.4	Crack-Radial	2	0.002	2	0	0.002
49	225.5	Crack-Radial	5	0.010	18	0	0.010
50	245.4	Crack-Radial	3	0.004	5	0	0.004
51	248.0	Crack-Radial	3	0.004	5	0	0.004
52	250.5	Crack-Radial	3	0.004	5	0	0.004
53	258.3	Crack-Radial	3	0.004	5	0	0.004
54	261.0	Crack-Radial	3	0.004	5	0	0.004
55	263.6	Crack-Radial	3	0.004	5	0	0.004
56	266.1	Crack-Radial	2	0.002	2	0	0.002
57	268.6	Crack-Radial	2	0.002	2	0	0.002
58	271.1	Crack-Radial	4	0.008	10	0	0.008
59	279.1	Crack-Radial	2	0.002	2	0	0.002
60	284.0	Crack-Radial	3	0.004	5	0	0.004
61	289.2	Crack-Radial	3	0.004	5	0	0.004
62	292.0	Crack-Radial	3	0.004	5	0	0.004
63	302.0	Crack-Radial	3	0.004	5	0	0.004
64	304.5	Crack-Radial	3	0.004	5	0	0.004
65	309.4	Crack-Radial	4	0.008	10	0	0.008
66	314.8	Crack-Radial	2	0.002	2	0	0.002
67	319.8	Crack-Radial	3	0.004	5	0	0.004
68	322.3	Crack-Radial	3	0.004	5	0	0.004
69	325.0	5646-113 DS Manhole	1	0.000	0	0	0.000

No taps

Video Inspection Master Report

5/9/2012

10:15 AM

US Structure: 5646-113 657 S CHAUTAUQUA ST Date Insp: 11/14/2011 Basin: EC01F
 DS Structure: 5646-112 2908 E GILBERT ST Dir Televised: Upstream To Downstream

Pipe Information

Shape: Round Length Status: Project No. : C-018
 Dia/Ht: 8 Material: VCP Index:
 Length: 55.0 Slope: 0.400 Surface:

Obs. #	VTR Counter	Distance	Location	Description	Rating	Ratings			
						Obsrvd (gpm)	Est. (gpm)	Struct	Clean
1		0.0	5646-113	US Manhole	1	0.000	0	0	0.000
2		6.0		Crack-Radial	3	0.004	5	0	0.004
3		10.9		Crack-Horizontal	3	0.004	5	0	0.004
4		13.0		Crack-Radial	3	0.004	5	0	0.004
5		18.4		Crack-Radial	4	0.008	10	0	0.008
6		21.0		Crack-Radial	3	0.004	5	0	0.004
7		31.2		Crack-Radial	3	0.004	5	0	0.004
8		41.8		Crack-Radial	2	0.002	2	0	0.002
9		44.4		Crack-Radial	3	0.004	5	0	0.004
10		46.8		Crack-Radial	3	0.004	5	0	0.004
11		54.4	5646-112	DS Manhole	1	0.000	0	0	0.000

No taps

MH 5646-107
Approx depth = 7.2 ft

MH 5646-108
Approx depth = 6.7 ft

MH 5646-109
Approx depth = 7.5 ft

MH 5646-110
Approx depth = 6.8 ft

MH 5646-111
Approx depth = 7.0 ft

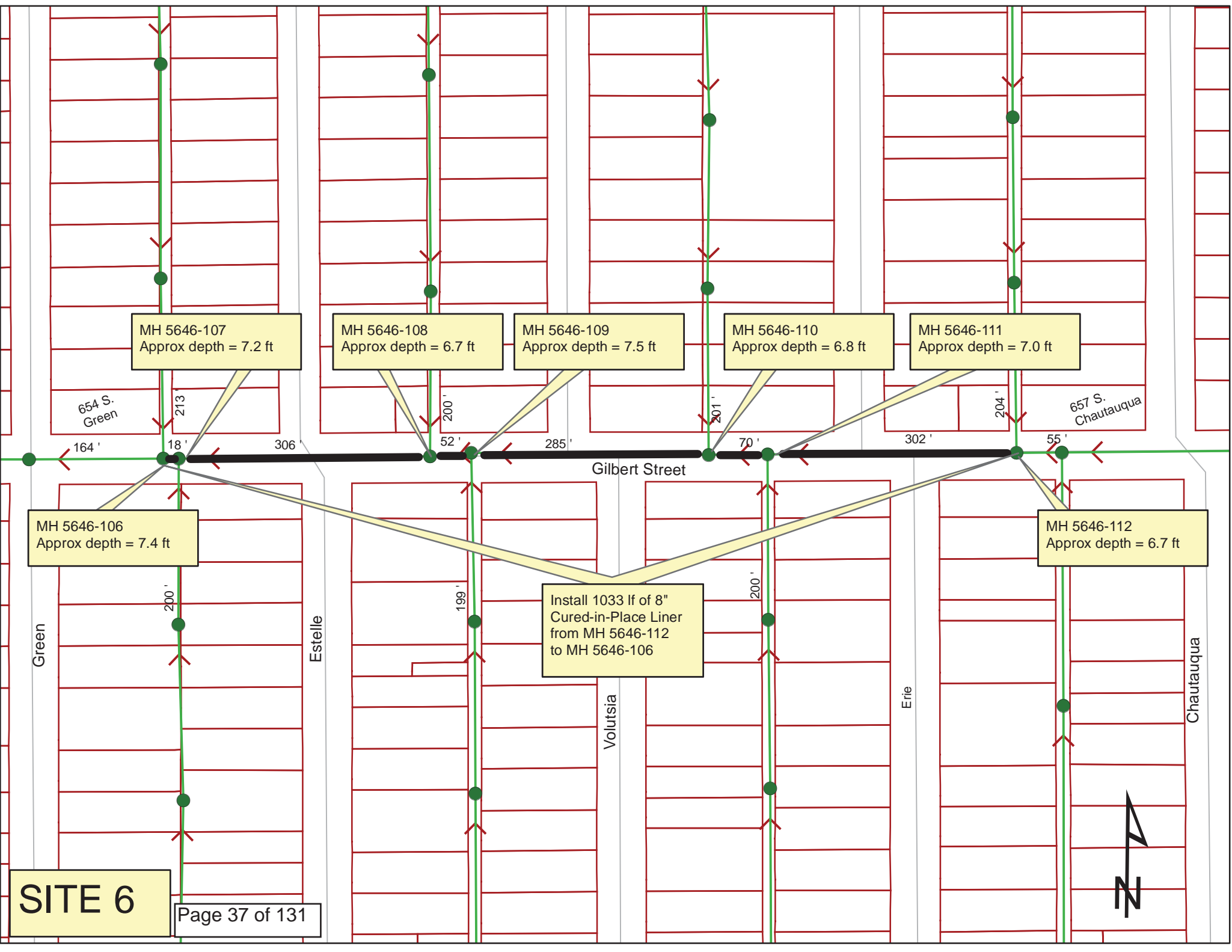
MH 5646-106
Approx depth = 7.4 ft

MH 5646-112
Approx depth = 6.7 ft

Install 1033 lf of 8"
Cured-in-Place Liner
from MH 5646-112
to MH 5646-106

SITE 6

Page 37 of 131



654 S. Green

657 S. Chautauqua

Gilbert Street

Green

Estelle

Volutsia

Erie

Chautauqua

213

200'

201'

204'

200'

199'

200'

164'

18'

306'

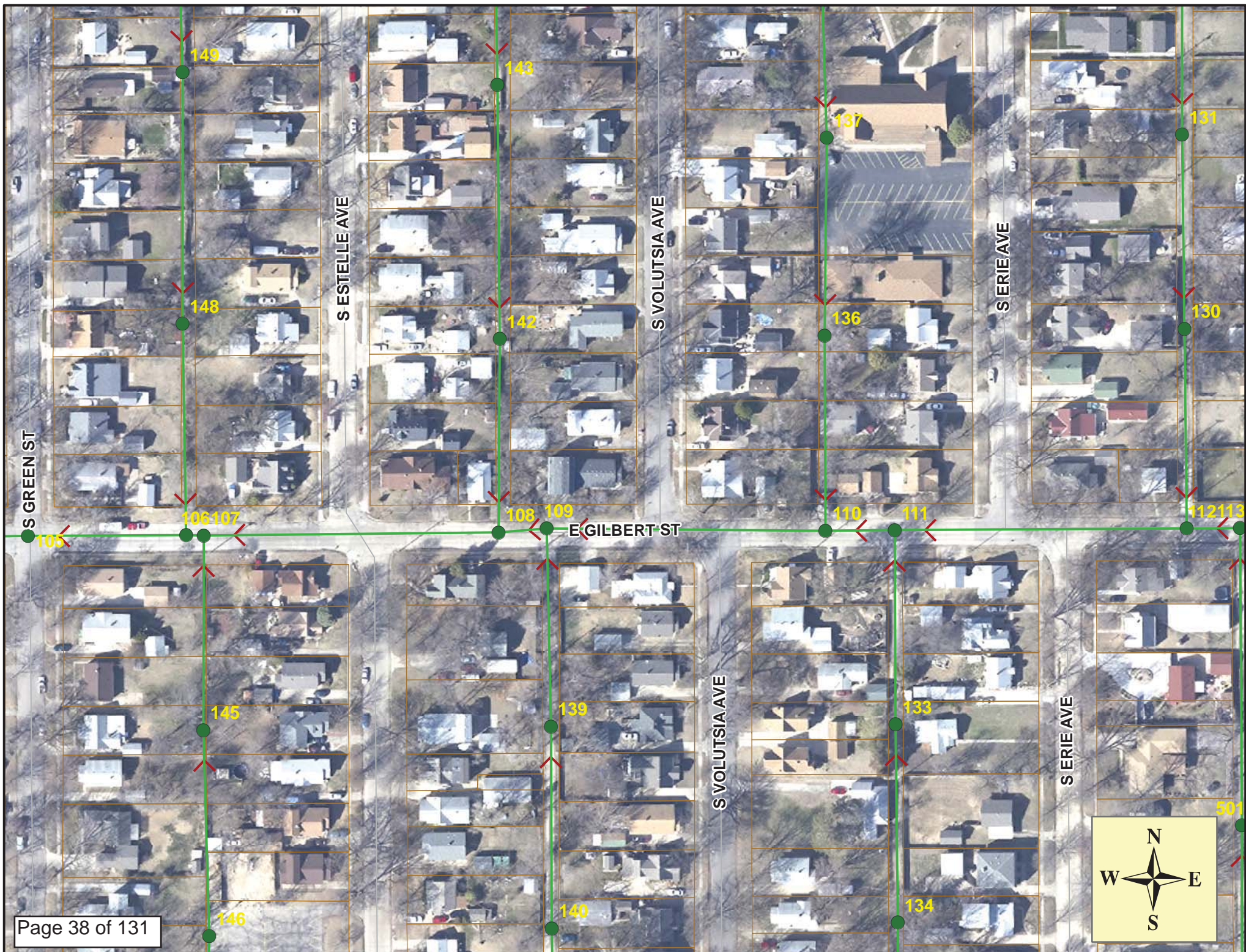
52'

285'

70'

302'

55'



Video Inspection Master Report

5/9/2012

10:15 AM

US Structure: 5646-112 2908 E GILBERT ST Date Insp: 11/14/2011 Basin: EC01F
 DS Structure: 5646-111 2822 E GILBERT ST Dir Televised: Upstream To Downstream

Pipe Information

Project No. : C-018 Dia: 8 Material: VCP Length: 301.0 Slope: 0.400 Surface:

Obs. #	VTR Counter	Distance	Location	Description	Rating	Obsrvd (gpm)	Ratings			Remain (gpm)
							Est. (gpm)	Struct	Clean	
1		0.0	5646-112	US Manhole	1	0.000	0	0	0.000	
2		5.2		Crack-Radial	3	0.004	5	0	0.004	
3		10.5		Crack-Radial	3	0.004	5	0	0.004	
4		18.1		Crack-Radial	3	0.004	5	0	0.004	
5		31.4		Crack-Radial	2	0.002	2	0	0.002	
6		33.8		Crack-Radial	2	0.002	2	0	0.002	
7		36.2		Crack-Radial	3	0.004	5	0	0.004	
8		41.4		Crack-Radial	3	0.004	5	0	0.004	
9		51.7		Crack-Radial	3	0.004	5	0	0.004	
10		56.7		Crack-Radial	3	0.004	5	0	0.004	
11		59.5		Crack-Radial	3	0.004	5	0	0.004	
12		61.9		Crack-Radial	3	0.004	5	0	0.004	
13		64.7		Crack-Horizontal	2	0.002	2	0	0.002	
14		67.1		Crack-Radial	2	0.002	2	0	0.002	
15		69.6		Crack-Radial	3	0.004	5	0	0.004	
16		82.3		Crack-Radial	3	0.004	5	0	0.004	
17		84.8		Crack-Radial	3	0.004	5	0	0.004	
18		92.3		Crack-Radial	3	0.004	5	0	0.004	
19		95.0		Crack-Radial	3	0.004	5	0	0.004	
20		97.5		Crack-Radial	3	0.004	5	0	0.004	
21		100.0		Crack-Radial	3	0.004	5	0	0.004	
22		107.7		Crack-Radial	2	0.002	2	0	0.002	
23		110.2		Crack-Radial	3	0.004	5	0	0.004	
24		112.8		Crack-Radial	3	0.004	5	0	0.004	
25		120.2		Crack-Radial	4	0.008	10	0	0.008	
26		132.9		Crack-Radial	2	0.002	2	0	0.002	
27		140.5		Crack-Radial	3	0.004	5	0	0.004	
28		143.0		Crack-Radial	3	0.004	5	0	0.004	
29		145.4		Crack-Radial	3	0.004	5	0	0.004	
30		148.0		Crack-Radial	3	0.004	5	0	0.004	
31		153.1		Crack-Radial	3	0.004	5	0	0.004	
32		158.2		Crack-Radial	3	0.004	5	0	0.004	
33		163.3		Crack-Radial	3	0.004	5	0	0.004	
34		165.7		Crack-Radial	2	0.002	2	0	0.002	
35		168.2		Crack-Radial	3	0.004	5	0	0.004	
36		173.4		Crack-Radial	3	0.004	5	0	0.004	
37		178.4		Crack-Radial	3	0.004	5	0	0.004	
38		181.0		Crack-Radial	3	0.004	5	0	0.004	
39		188.5		Crack-Radial	3	0.004	5	0	0.004	

Video Inspection Master Report

5/9/2012

10:15 AM

US Structure: 5646-112 2908 E GILBERT ST Date Insp: 11/14/2011 Basin: EC01F
 DS Structure: 5646-111 2822 E GILBERT ST Dir Televised: Upstream To Downstream

40	193.9	Crack-Radial	2	0.002	2	0	0.002
41	196.0	Crack-Radial	3	0.004	5	0	0.004
42	201.0	Crack-Radial	3	0.004	5	0	0.004
43	206.3	Crack-Radial	3	0.004	5	0	0.004
44	208.9	Crack-Radial	2	0.002	2	0	0.002
45	216.3	Crack-Radial	2	0.002	2	0	0.002
46	218.8	Crack-Radial	2	0.002	2	0	0.002
47	221.2	Crack-Radial	3	0.004	5	0	0.004
48	226.2	Crack-Radial	3	0.004	5	0	0.004
49	229.4	Crack-Radial	3	0.004	5	0	0.004
50	236.8	Crack-Radial	3	0.004	5	0	0.004
51	241.5	Crack-Radial	3	0.004	5	0	0.004
52	244.0	Crack-Radial	3	0.004	5	0	0.004
53	254.0	Crack-Radial	3	0.004	5	0	0.004
54	261.5	Crack-Radial	3	0.004	5	0	0.004
55	264.2	Crack-Radial	3	0.004	5	0	0.004
56	274.2	Crack-Radial	3	0.004	5	0	0.004
57	279.1	Crack-Radial	3	0.004	5	0	0.004
58	286.5	Sag	2	0.000	2	0	0.000
59	289.1	Sag (short)	5	0.000	25	0	0.000
60	291.9	Crack-Radial	3	0.004	5	0	0.004
61	297.0	Sag	1	0.000	1	0	0.000
62	302.0	Sag (short)	4	0.000	10	0	0.000
63	302.0	5646-111 DS Manhole	1	0.000	0	0	0.000

No taps / Line through small sags



Video Inspection Master Report

7/22/2013

1:57 PM

US Structure: 5646-111 2822 E GILBERT ST Date Insp: 9/4/2007 Basin: EC01F
 DS Structure: 5646-110 2822 E GILBERT ST Dir Televised: Up->Down

Pipe Information

Shape: Round Length Status: Project No. : C-018
 Dia/Ht: 8 Material: VCP Index:
 Length: 70.0 Slope: 0.429 DVD #0318

Overall Cond: Poor Rehab Priority: Rehab Priority Med High

Obs. #	VTR Counter	Distance	Location	Description	Rating	Obsrvd (gpm)	Ratings			Remain (gpm)
							Est. (gpm)	Struct	Clean	
1		0.0	US Manhole	5646-111	1					
2		10.7	Lower Right	Broken Pipe	3	0.010	60	0	0.010	
3		28.7	Upper Left	Crack-Radial	3	0.004	5	0	0.004	
4		38.9	Upper Left	Broken Pipe	3	0.010	60	0	0.010	
5		41.5	Lower Left	Broken Pipe	3	0.010	60	0	0.010	
6		43.8	Upper Left	Broken Pipe	3	0.010	60	0	0.010	
7		46.7	Lower Left	Crack-Radial	3	0.004	5	0	0.004	
8		49.1	Upper Right	Crack-Radial	3	0.004	5	0	0.004	
9		54.1	Lower Left	Crack-Radial	3	0.004	5	0	0.004	
10		59.2	Upper Right	Broken Pipe	3	0.010	60	0	0.010	
11		61.9	Invert	Crack-Radial	3	0.004	5	0	0.004	
12		66.7	Crown	Broken Pipe	3	0.010	60	0	0.010	
13		70.2	DS Manhole	5646-110	1					

Video Inspection Master Report

7/17/2013

7:42 AM

US Structure: 5646-110 2822 E GILBERT ST Date Insp: 9/4/2007 Basin: EC01F
 DS Structure: 5646-109 703 S VOLUTSIA AVE Dir Televised: Upstream To Downstream

Pipe Information

Shape: Round Length Status: Project No. : C-018
 Dia/Ht: 8 Material: VCP Index:
 Length: 285.0 Slope: 0.130 Overall Cond: Poor

Comments: LINE IN POOR CONDITION DUE TO CRACKS AND BROKEN PIPE RECOMMEND #4 LINER

Obs. #	VTR Counter	Distance	Location	Description	Rating	Obsrvd (gpm)	Ratings			Remain (gpm)
							Est. (gpm)	Struct	Clean	
1		0.0	US Manhole	5646-110	1					
2		6.5	Invert		3	0.004	5	0	0.004	
3		19.0	Crown	Crack-Radial	3	0.010	60	0	0.010	
4		21.4	Lower Left	Broken Pipe	4	0.008	10	0	0.008	
5		24.0	Upper Right	Crack-Radial	3	0.004	5	0	0.004	
6		28.7	Lower Left	Crack-Radial	3	0.010	60	0	0.010	
7		31.4	Upper Left	Broken Pipe	3	0.010	60	0	0.010	
8		39.1	Upper Left	Crack-Radial	3	0.004	5	0	0.004	
9		44.0	Upper Left	Broken Pipe	3	0.010	60	0	0.010	
10		59.3	Upper Right	Crack-Radial	3	0.010	60	0	0.010	
11		63.8	Upper Left	Broken Pipe	3	0.004	5	0	0.004	
12		77.0	Lower Right	Crack-Radial	3	0.010	60	0	0.010	
13		79.3	Upper Right	Broken Pipe	3	0.010	60	0	0.010	
14		84.1	Upper Left	Crack-Radial	3	0.010	60	0	0.010	
15		86.6	Lower Left	Broken Pipe	2	0.002	2	0	0.002	
16		89.0	Lower Left	Crack-Radial	3	0.004	5	0	0.004	
17		91.4	Upper Left	Crack-Radial	2	0.002	2	0	0.002	
18		99.4	Lower Left	Crack-Radial	3	0.004	5	0	0.004	
19		101.3	Upper Left	Crack-Radial	3	0.010	60	0	0.010	
20		113.9	Upper Right	Broken Pipe	3	0.004	5	0	0.004	
21		116.8	Upper Left	Crack-Radial	3	0.004	5	0	0.004	
22		126.7	Invert	Crack-Radial	3	0.004	5	0	0.004	
23		129.1	Lower Left	Crack-Radial	4	0.008	10	0	0.008	
24		132.0	Lower Left	Crack-Radial	4	0.008	10	0	0.008	
25		134.2	Lower Left	Broken Pipe	3	0.010	60	0	0.010	
26		139.3	Lower Left	Crack-Radial	3	0.004	5	0	0.004	
27		141.6	Lower Left	Crack-Radial	3	0.004	5	0	0.004	
28		149.5	Invert	Crack-Radial	3	0.010	60	0	0.010	
29		160.0	Lower Left	Broken Pipe	3	0.004	5	0	0.004	
30		162.2	Upper Right	Crack-Radial	3	0.004	5	0	0.004	
31		172.0	Lower Left	Crack-Radial	3	0.010	60	0	0.010	
32		177.1	Lower Left	Broken Pipe	3	0.010	60	0	0.010	
33		182.6	Lower Left	Crack-Radial	3	0.004	5	0	0.004	
34		187.2	Lower Left	Broken Pipe	3	0.010	60	0	0.010	
35		187.2	Invert	Crack-Radial	3	0.010	60	0	0.010	
36		189.6	Upper Right	Broken Pipe	3	0.010	60	0	0.010	
37		192.3	Lower Left	Crack-Radial	3	0.010	60	0	0.010	

Video Inspection Master Report

7/17/2013

7:42 AM

US Structure: 5646-110 2822 E GILBERT ST Date Insp: 9/4/2007 Basin: EC01F
 DS Structure: 5646-109 703 S VOLUTSIA AVE Dir Televised: Upstream To Downstream

37	196.9	Lower Left	Broken Pipe	3	0.010	60	0	0.010
38	204.8	Crown	Crack-Radial	4	0.008	10	0	0.008
39	209.5	Invert	Broken Pipe	3	0.010	60	0	0.010
40	217.3	Upper Left	Broken Pipe	3	0.010	60	0	0.010
41	224.9	Lower Left	Crack-Radial	3	0.004	5	0	0.004
42	229.6	Lower Left	Crack-Radial	3	0.004	5	0	0.004
43	232.8	Invert	Crack-Radial	4	0.008	10	0	0.008
44	237.6	Invert	Crack-Radial	3	0.004	5	0	0.004
45	245.0	Upper Right	Broken Pipe	3	0.010	60	0	0.010
46	247.4	Upper Right	Crack-Horizontal	4	0.008	10	0	0.008
47	257.4	Lower Left	Broken Pipe	3	0.010	60	0	0.010
48	259.9	Upper Left	Crack-Horizontal	3	0.004	5	0	0.004
49	267.3	Lower Left	Crack-Radial	3	0.004	5	0	0.004
50	270.0	Upper Right	Crack-Radial	4	0.008	10	0	0.008
51	275.1	Lower Left	Crack-Radial	3	0.004	5	0	0.004
52	277.3	Upper Left	Crack-Radial	4	0.008	10	0	0.008
53	280.1	Upper Right	Broken Pipe	3	0.010	60	0	0.010
54	282.6	Crown	Broken Pipe	3	0.010	60	0	0.010
55	283.2	Lower Right	Crack-Horizontal	3	0.004	5	0	0.004
56	284.7	DS Manhole 5646-109						

Video Inspection Master Report

7/17/2013

7:42 AM

US Structure: 5646-109 703 S VOLUTSIA AVE Date Insp: 9/4/2007 Basin: EC01F
 DS Structure: 5646-108 656 S ESTELLE AVE Dir Televised: Downstream To Upstream

Pipe Information

Shape: Round Length Status: Project No. : C-018
 Dia/Ht: 10 Material: VCP Index:
 Length: 52.5 Slope: 0.385 Surface:

Obs. #	VTR Counter	Distance	Location	Description	Rating	Obsrvd (gpm)	Ratings			Remain (gpm)
							Est. (gpm)	Struct	Clean	
1		3.0	DS Manhole	5646-108	1		Comment: TV AGAINST THE FLOW			
2		0.0	Lower Left	Crack-Radial	3	0.004	5	0	0.004	
3		13.7	Lower Left	Crack-Radial	3	0.004	5	0	0.004	
4		16.2	Upper Left	Crack-Radial	4	0.008	10	0	0.008	
5		19.1	Invert	Crack-Radial	3	0.004	5	0	0.004	
6		20.9	Upper Left	Crack-Radial	3	0.004	5	0	0.004	
7		39.3	Upper Left	Crack-Radial	3	0.004	5	0	0.004	
8		51.8	US Manhole	5646-109	1					

Video Inspection Master Report

7/17/2013

7:42 AM

US Structure: 5646-108 656 S ESTELLE AVE Date Insp: 9/4/2007 Basin: EC01F
 DS Structure: 5646-107 657 S ESTELLE AVE Dir Televised: Upstream To Downstream

Pipe Information

Shape: Round Length Status: Project No. : C-018
 Dia/Ht: 10 Material: VCP Index:
 Length: 305.5 Slope: 0.098 Overall Cond: Poor

Obs. #	VTR Counter	Distance	Location	Description	Rating	Obsrvd (gpm)	Ratings			Remain (gpm)
							Est. (gpm)	Struct	Clean	
1		0.0	US Manhole	5646-108	1					
2		6.0	Lower Left	Crack-Radial	3	0.004	5	0	0.004	
3		16.3	Upper Right	Crack-Radial	3	0.004	5	0	0.004	
4		18.6	Upper Right	Crack-Radial	3	0.004	5	0	0.004	
5		24.2	Upper Left	Broken Pipe	3	0.010	60	0	0.010	
6		26.9	Lower Left	Broken Pipe	3	0.010	60	0	0.010	
7		31.8	Invert	Broken Pipe	3	0.010	60	0	0.010	
8		36.8	Lower Left	Crack-Radial	3	0.004	5	0	0.004	
9		39.7	Upper Left	Crack-Horizontal	2	0.002	2	0	0.002	
10		44.8	Upper Right	Crack-Horizontal	2	0.002	2	0	0.002	
11		54.9	Upper Left	Crack-Horizontal	3	0.004	5	0	0.004	
12		69.9	Upper Left	Broken Pipe	3	0.010	60	0	0.010	
13		72.0	Upper Right	Broken Pipe	3	0.010	60	0	0.010	
14		74.2	Upper Right	Broken Pipe	3	0.010	60	0	0.010	
15		77.3	Lower Left	Crack-Radial	3	0.004	5	0	0.004	
16		80.1	Invert	Crack-Radial	3	0.004	5	0	0.004	
17		82.4	Upper Left	Crack-Radial	3	0.004	5	0	0.004	
18		87.3	Upper Left	Crack-Radial	3	0.004	5	0	0.004	
19		90.1	Upper Right	Broken Pipe	3	0.010	60	0	0.010	
20		97.6	Lower Left	Broken Pipe	3	0.010	60	0	0.010	
21		107.6	Lower Left	Crack-Radial	3	0.004	5	0	0.004	
22		110.3	Upper Right	Crack-Radial	3	0.004	5	0	0.004	
23		112.8	Lower Left	Crack-Radial	3	0.004	5	0	0.004	
24		115.5	Upper Right	Crack-Radial	4	0.008	10	0	0.008	
25		117.9	Lower Left	Crack-Radial	3	0.004	5	0	0.004	
26		143.5	Invert	Broken Pipe	3	0.010	60	0	0.010	
27		156.4	Upper Right	Broken Pipe	3	0.010	60	0	0.010	
28		159.0	Lower Left	Crack-Radial	3	0.004	5	0	0.004	
29		161.6	Lower Left	Crack-Radial	3	0.004	5	0	0.004	
30		166.6	Upper Left	Crack-Radial	3	0.004	5	0	0.004	
31		169.1	Lower Left	Crack-Radial	3	0.004	5	0	0.004	
32		173.9	Lower Left	Crack-Radial	3	0.004	5	0	0.004	
33		177.1	Upper Right	Broken Pipe	3	0.010	60	0	0.010	
34		179.5	Lower Left	Crack-Radial	3	0.004	5	0	0.004	

Video Inspection Master Report

7/17/2013

7:42 AM

US Structure: 5646-108 656 S ESTELLE AVE Date Insp: 9/4/2007 Basin: EC01F
 DS Structure: 5646-107 657 S ESTELLE AVE Dir Televised: Upstream To Downstream

35	181.7	Lower Left	Crack-Radial	3	0.004	5	0	0.004
36	184.4	Lower Left	Crack-Radial	3	0.004	5	0	0.004
37	187.0	Crown	Crack-Radial	4	0.008	10	0	0.008
38	189.5	Lower Left	Crack-Radial	3	0.004	5	0	0.004
39	194.8	Lower Left	Crack-Radial	3	0.004	5	0	0.004
40	197.3	Lower Left	Crack-Radial	3	0.004	5	0	0.004
41	199.9	Upper Left	Crack-Radial	3	0.004	5	0	0.004
42	202.5	Lower Left	Crack-Radial	3	0.004	5	0	0.004
43	205.1	Upper Left	Crack-Radial	3	0.004	5	0	0.004
44	208.0	Crown	Crack-Horizontal	3	0.004	5	0	0.004
45	210.3	Upper Right	Broken Pipe	3	0.010	60	0	0.010
46	213.2	Upper Right	Crack-Radial	3	0.004	5	0	0.004
47	215.4	Upper Right	Crack-Radial	3	0.004	5	0	0.004
48	218.0	Crown	Crack-Horizontal	3	0.004	5	0	0.004
49	220.3	Crown	Crack-Horizontal	4	0.008	10	0	0.008
50	222.8	Crown	Crack-Horizontal	4	0.008	10	0	0.008
51	225.3	Lower Left	Crack-Radial	3	0.004	5	0	0.004
52	228.1	Upper Left	Crack-Radial	3	0.004	5	0	0.004
53	230.5	Crown	Crack-Horizontal	3	0.004	5	0	0.004
54	232.8	Crown	Crack-Horizontal	3	0.004	5	0	0.004
55	243.4	Upper Left	Crack-Radial	4	0.008	10	0	0.008
56	245.8	Lower Left	Broken Pipe	4	0.030	78	0	0.030
57	247.9	Invert	Crack-Radial	3	0.004	5	0	0.004
58	251.0	Upper Left	Crack-Radial	3	0.004	5	0	0.004
59	255.8	Crown	Crack-Radial	3	0.004	5	0	0.004
60	258.5	Upper Left	Crack-Radial	4	0.008	10	0	0.008
61	265.9	Lower Left	Broken Pipe	3	0.010	60	0	0.010
62	268.6	Lower Left	Broken Pipe	3	0.010	60	0	0.010
63	273.8	Lower Left	Crack-Radial	3	0.004	5	0	0.004
64	279.2	Lower Left	Broken Pipe	3	0.010	60	0	0.010
65	286.8	Crown	Crack-Radial	4	0.008	10	0	0.008
66	289.3	Upper Right	Crack-Horizontal	3	0.004	5	0	0.004
67	291.9	Lower Left	Crack-Radial	3	0.004	5	0	0.004
68	296.7	Lower Left	Crack-Radial	4	0.008	10	0	0.008
69	299.3	Upper Right	Broken Pipe	3	0.010	60	0	0.010
70	304.2	Lower Left	Crack-Radial	4	0.008	10	0	0.008
71	306.4	DS Manhole 5646-107		1				

Video Inspection Master Report

7/17/2013

7:42 AM

US Structure: 5646-107 657 S ESTELLE AVE Date Insp: 9/4/2007 Basin: EC01F
 DS Structure: 5646-106 654 S GREEN ST Dir Televised: Upstream To Downstream

Pipe Information

Shape: Round Length Status: Project No. : C-018
 Dia/Ht: 10 Material: VCP Index:
 Length: 17.0 Slope: 0.882 Surface:

Obs. #	VTR Counter	Distance	Location	Description	Rating	Obsrvd (gpm)	Ratings			Remain (gpm)
							Est. (gpm)	Struct	Clean	
1		0.0	US Manhole	5646-107	1					
2		4.9	Upper Right	Broken Pipe	3	0.010	60	0	0.010	
3		10.2	Lower Left	Broken Pipe	3	0.010	60	0	0.010	
4		12.6	Lower Left	Broken Pipe	3	0.010	60	0	0.010	
5		15.0	Upper Left	Broken Pipe	3	0.010	60	0	0.010	
6		18.2	DS Manhole	5646-106	1					