

Install 615 lf of 8" Cured-in-Place Liner from MH 5646-135 to MH 5646-111

MH 5646-111
Approx depth = 7.0 ft

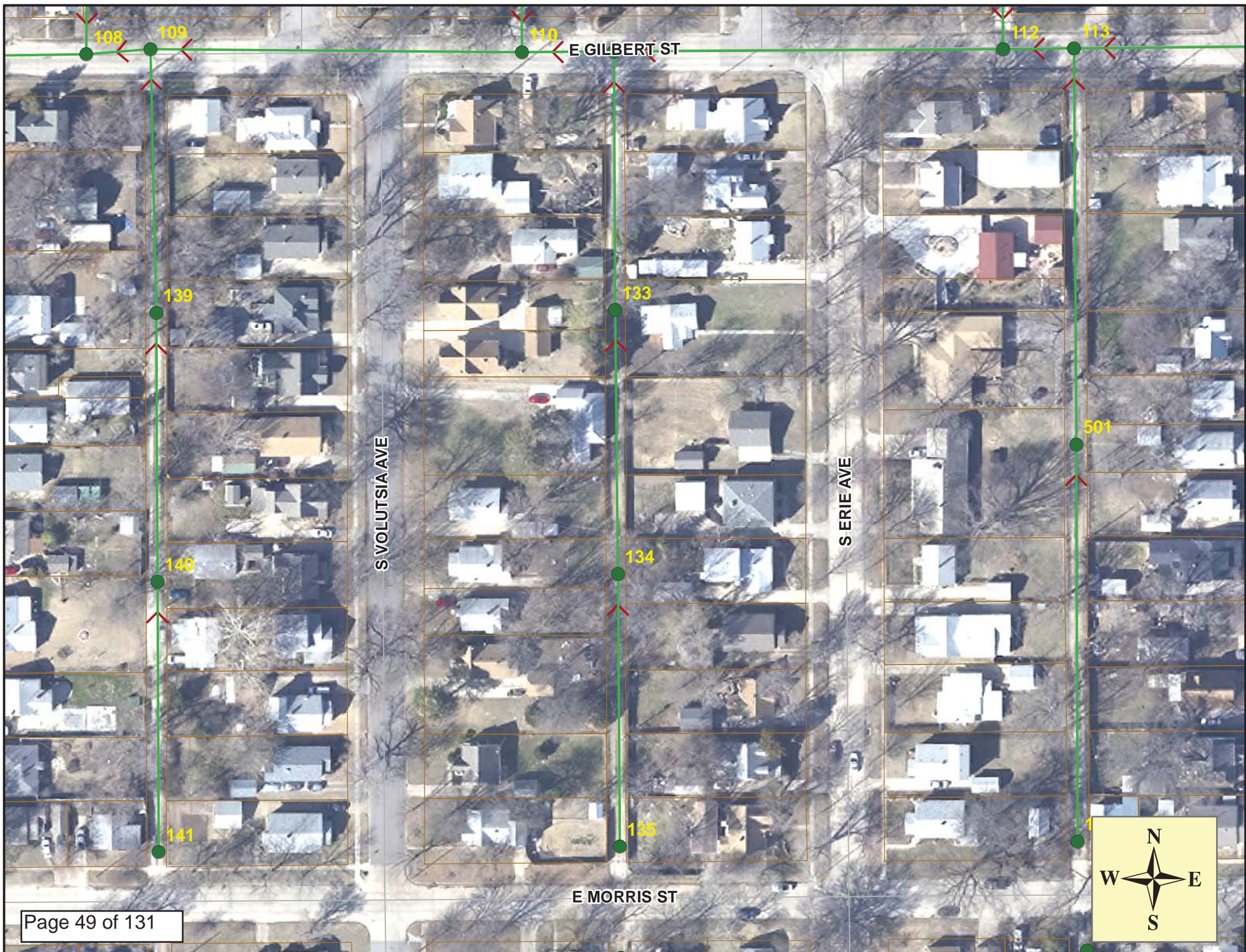
MH 5646-133
Approx depth = 7.4 ft

MH 5646-134
Approx depth = 7.0 ft

MH 5646-135
Approx depth = 6.2 ft

SITE 7





Video Inspection Master Report

5/16/2013

1:49 PM

US Structure: 5646-135 **756 S VOLUTSIA ST** **Date Insp:** 11/14/2011 **Basin:** EC01F
DS Structure: 5646-134 **730 S VOLUTSIA ST** **Dir Televised:** Upstream To Downstream

Pipe Information

Shape: Round	Length Status:	Project No. : C-020
Dia/Ht: 8	Material: VCP	Index:
Length: 209.7	Slope: 0.100	Surface:

Obs. #	VTR Counter	Distance	Location	Description	Rating	Obsrvd (gpm)	Ratings			
							Est. (gpm)	Struct	Clean	Remain (gpm)
1		0.0	5646-135	US Manhole	1	0.000	0	0	0.000	
2		8.5		Crack-Radial	4	0.008	10	0	0.008	
3		19.6	756 S VOLUTSIA / PVC	Break-In Conn	1	0.001	0	0	0.001	
4		23.0		Sealed Off Wye	1	0.000	0	0	0.000	
5		45.9	756 S VOLUTSIA	Wye Service (dry) - LML	1	COULD BE ABANDONED / NEEDS VERIFIED				
6		47.4	755 S ERIE	Break-In Conn	1	0.001	0	0	0.001	
7		54.1		Crack-Radial	3	0.004	5	0	0.004	
8		59.4		Crack-Radial	3	0.004	5	0	0.004	
9		62.0		Crack-Radial	2	0.002	2	0	0.002	
10		71.4	748 S VOLUTISA	Wye Service (dry) - LML	1	COULD BE ABANDONED / NEEDS VERIFIED				
11		72.0		Crack-Radial	4	0.008	10	0	0.008	
12		73.4		Sealed Off Wye	1	0.000	0	0	0.000	
13		76.9	748 S VOLUTSIA	Break-In Conn (looks active)	3	0.004	2	0	0.004	
14		77.2	745 S ERIE	Break-In Conn	3	0.004	2	0	0.004	
15		82.3		Crack-Radial	2	0.002	2	0	0.002	
16		84.9		Crack-Radial	2	0.002	2	0	0.002	
17		87.2		Crack-Radial	3	0.004	5	0	0.004	
18		89.9		Crack-Radial	2	0.002	2	0	0.002	
19		96.4		Sealed Off Wye	1	0.000	0	0	0.000	
20		97.5		Crack-Radial	2	0.002	2	0	0.002	
22		99.1	737 S ERIE	Wye Service	5	0.000	400	0	0.000	
			(fixed by Sewer Maintenance, main 6' deep, WO 2012-005554)							
23		100.0		Crack-Radial	2	0.002	2	0	0.002	
24		109.9		Crack-Radial	4	0.008	10	0	0.008	
25		112.4		Crack-Radial	3	0.004	5	0	0.004	
26		117.6		Crack-Radial	3	0.004	5	0	0.004	
27		121.8		Sealed Off Wye	1	0.000	0	0	0.000	
28		124.4		Sealed Off Wye	1	0.000	0	0	0.000	
29		127.6		Crack-Radial	4	0.008	10	0	0.008	
30		130.3		Crack-Radial	2	0.002	2	0	0.002	
31		135.4		Crack-Radial	3	0.004	5	0	0.004	
32		143.0		Crack-Radial	2	0.002	2	0	0.002	

Video Inspection Master Report

5/16/2013

1:49 PM

US Structure: 5646-135 756 S VOLUTSIA ST Date Insp: 11/14/2011 Basin: EC01F
 Dir Televised: Upstream To Downstream

DS Structure: 5646-134 730 S VOLUTSIA ST

33	147.3		Sealed Off Wye	1	0.000	0	0	0.000
34	149.8		Sealed Off Wye	1	0.000	0	0	0.000
35	153.3		Crack-Radial	3	0.004	5	0	0.004
36	160.3	736 S VOLUTSIA	Break-In Conn	5	0.010	400	0	0.010
		(fixed by Sewer Maintenance, main 6.5' deep, WO 2012-005623)						
37	163.4		Crack-Radial	1	0.001	1	0	0.001
38	165.7		Crack-Radial	2	0.002	2	0	0.002
39	170.8		Crack-Radial	2	0.002	2	0	0.002
40	172.6	732 S VOLUTIS	Wye Service / roots	1	0.000	0	0	0.000
41	175.2		Sealed Off Wye	1	0.000	0	0	0.000
42	186.3	735 S ERIE	Break-In Conn	4	0.008	60	0	0.008
		(fixed by Sewer Maintenance, WO 2012-005617)						
43	198.0		Sealed Off Wye	1	0.000	0	0	0.000
44	200.4		Sealed Off Wye	1	0.000	0	0	0.000
45	201.4		Crack-Radial	3	0.004	5	0	0.004
46	206.4		Crack-Radial	3	0.004	5	0	0.004
47	209.3	5646-134	DS Manhole	1	0.000	0	0	0.000

Video Inspection Master Report

5/16/2013

1:49 PM

US Structure: 5646-134 **730 S VOLUTSIA ST** **Date Insp:** 11/14/2011 **Basin:** EC01F
DS Structure: 5646-133 **712 S VOLUTSIA ST** **Dir Televised:** Upstream To Downstream

Pipe Information

Shape: Round	Length Status:	Project No. : C-020
Dia/Ht: 8	Material: VCP	Index:
Length: 204.3	Slope: 0.098	Surface:

Obs. #	VTR Counter	Distance	Location	Description	Rating	Obsrvd (gpm)	Ratings			Remain (gpm)
							Est. (gpm)	Struct	Clean	
1		0.0	5646-134	US Manhole	1		0.000	0	0	0.000
2		4.8		Crack-Radial	4		0.008	10	0	0.008
3		6.1	Sealed off	Break-In Conn	1		0.001	0	0	0.001
4		13.2	730 S VOLUTSIA (fixed by Sewer Maintenance, WO 2012-005555)	Wye Service	5		0.000	400	0	0.000
5		16.1	731 S ERIE	Break-In Conn	1		0.001	0	0	0.001
6		17.7		Broken Pipe	4	OK to line - LML				
7		22.8		Crack-Radial	3		0.004	5	0	0.004
8		35.4		Crack-Radial	3		0.004	5	0	0.004
9		39.9		Sealed Off Wye	1		0.000	0	0	0.000
10		42.3		Sealed Off Wye	1		0.000	0	0	0.000
11		43.3		Crack-Radial	2		0.002	2	0	0.002
12		55.9		Crack-Radial	2		0.002	2	0	0.002
13		58.5		Crack-Radial	2		0.002	2	0	0.002
14		64.1	728 S VOLUTSIA	Break-In Conn	1		0.001	0	0	0.001
15		67.1		Sealed Off Wye	1		0.000	0	0	0.000
16		68.7	725 S ERIE	Break-In Conn	1		0.001	0	0	0.001
17		73.6		Crack-Radial	3		0.004	5	0	0.004
18		91.0		Sealed Off Wye	1		0.000	0	0	0.000
19		93.3		Sealed Off Wye	1		0.000	0	0	0.000
20		94.1		Crack-Radial	2		0.002	2	0	0.002
21		107.0		Crack-Radial	3		0.004	5	0	0.004
22		109.7		Crack-Radial	5		0.010	18	0	0.010
23		116.4		Sealed Off Wye	1		0.000	0	0	0.000
24		119.0		Sealed Off Wye	1		0.000	0	0	0.000
25		124.9		Crack-Radial	2		0.002	2	0	0.002
26		134.0	726 S VOLUTSIA / PVC	Break-In Conn	1		0.001	0	0	0.001
27		141.8		Sealed Off Wye	1		0.000	0	0	0.000
28		142.6	Offset Joint (fixed by Sewer Maintenance)	Mat. Chngs to PVC	1		0.000	0	0	0.000
29		143.7	721 S ERIE	PVC Break-In Conn	4		0.008	60	0	0.008
30		145.7		Mat. Chngs to VCP	1		0.000	0	0	0.000
31		148.0		Crack-Radial	2		0.002	2	0	0.002
32		150.9	726 S VOLUTSIA	Break-In Conn	1		0.001	0	0	0.001
33		155.5		Crack-Radial	2		0.002	2	0	0.002

Video Inspection Master Report

5/16/2013

1:49 PM

US Structure: 5646-134 730 S VOLUTSIA ST Date Insp: 11/14/2011 Basin: EC01F
 DS Structure: 5646-133 712 S VOLUTSIA ST Dir Televised: Upstream To Downstream

34	160.4		Crack-Radial	3	0.004	5	0	0.004
35	163.3		Crack-Radial	3	0.004	5	0	0.004
36	167.4	714 S VOLUTSIA	Wye Service	2	0.000	0	0	0.000
37	169.9		Sealed Off Wye	1	0.000	0	0	0.000
38	170.9		Crack-Radial	2	0.002	2	0	0.002
39	175.9		Crack-Radial	5	0.010	18	0	0.010
40	178.4		Crack-Radial	3	0.004	5	0	0.004
41	181.0		Crack-Radial	3	0.004	5	0	0.004
42	192.9		Sealed Off Wye	1	0.000	0	0	0.000
43	195.4	717 S ERIE	Wye Service	3	0.000	2	0	0.000
44	196.9	712 S VOLUTSIA (fixed by Sewer Maintenance, WO 2012-005619)	Break-In Conn	5	0.010	400	0	0.010
45	198.6		Crack-Radial	3	0.004	5	0	0.004
46	205.5	5646-133	DS Manhole	1	0.000	0	0	0.000

Video Inspection Master Report

5/16/2013

1:49 PM

US Structure: 5646-133 712 S VOLUTSIA ST Date Insp: 11/15/2011 Basin: EC01F
 DS Structure: 5646-111 2822 E GILBERT ST Dir Televised: Upstream To Downstream

Pipe Information

Shape: Round Length Status: Project No. : C-020
 Dia/Ht: 8 Material: VCP Index:
 Length: 200.0 Slope: 0.100 Surface:

Obs. #	VTR Counter	Distance	Location	Description	Rating	Obsrvd (gpm)	Ratings			Remain (gpm)
							Est. (gpm)	Struct	Clean	
1		0.0		US Manhole	1	0.000	0	0	0.000	
2		6.7		Broken Pipe / invert / ok to line over it -LML	4	0.030	78	0	0.030	
3		10.9		Sealed Off Wye	1	0.000	0	0	0.000	
4		13.5		Sealed Off Wye	1	0.000	0	0	0.000	
5		14.3		Crack-Radial	3	0.004	5	0	0.004	
6		19.4		Crack-Radial	3	0.004	5	0	0.004	
7		21.8		Crack-Radial	3	0.004	5	0	0.004	
8		29.4		Crack-Radial	3	0.004	5	0	0.004	
9		31.8		Crack-Radial	5	0.010	18	0	0.010	
10		36.0		Sealed Off Wye	1	0.000	0	0	0.000	
11		38.7		Sealed Off Wye	1	0.000	0	0	0.000	
12		39.6		Crack-Radial	3	0.004	5	0	0.004	
13		49.4		Crack-Radial	3	0.004	5	0	0.004	
14		60.6	710 S VOLUTIS	Break-In Conn	3	0.004	2	0	0.004	
15		64.2	711 S ERIE	Wye Service	1	0.000	0	0	0.000	
16		64.8		Crack-Radial	4	0.008	10	0	0.008	
17		69.9		Crack-Radial	3	0.004	5	0	0.004	
18		77.4		Crack-Radial	1	0.001	1	0	0.001	
19		82.5		Crack-Radial	5	0.010	18	0	0.010	
20		86.8		Sealed Off Wye	1	0.000	0	0	0.000	
21		89.4		Sealed Off Wye	1	0.000	0	0	0.000	
22		95.2		Crack-Radial	3	0.004	5	0	0.004	
23		107.8		Crack-Radial	2	0.002	2	0	0.002	
24		112.1		Sealed Off Wye	1	0.000	0	0	0.000	
25		114.1	707 S ERIE	Wye Service / roots	5	0.000	400	0	0.000	
26		118.4	708 S VOLUTSIA	Break-In Conn	3	0.004	2	0	0.004	
27		123.1		Crack-Radial	3	0.004	5	0	0.004	
28		125.7		Crack-Radial	3	0.004	5	0	0.004	
29		130.9		Crack-Radial	2	0.002	2	0	0.002	
30		135.6		Crack-Radial	2	0.002	2	0	0.002	
31		137.0	702 S VOLUTISA	Break-In Conn	3	0.004	2	0	0.004	
32		139.1	701 S ERIE	Break-In Conn	1	0.001	0	0	0.001	

(2 taps fixed by Sewer Maintenance, main 7' deep, WO 2012-005749)

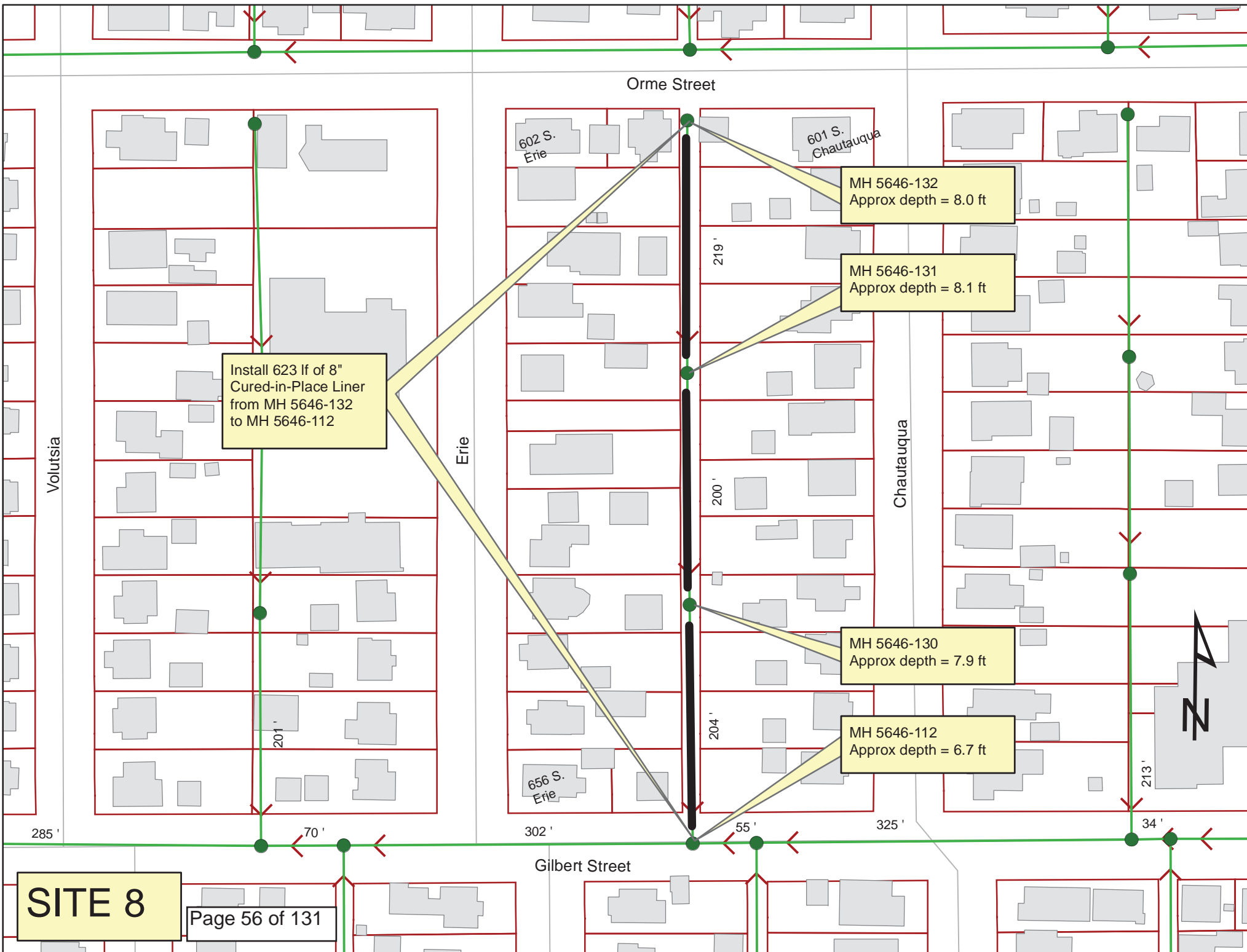
Video Inspection Master Report

5/16/2013

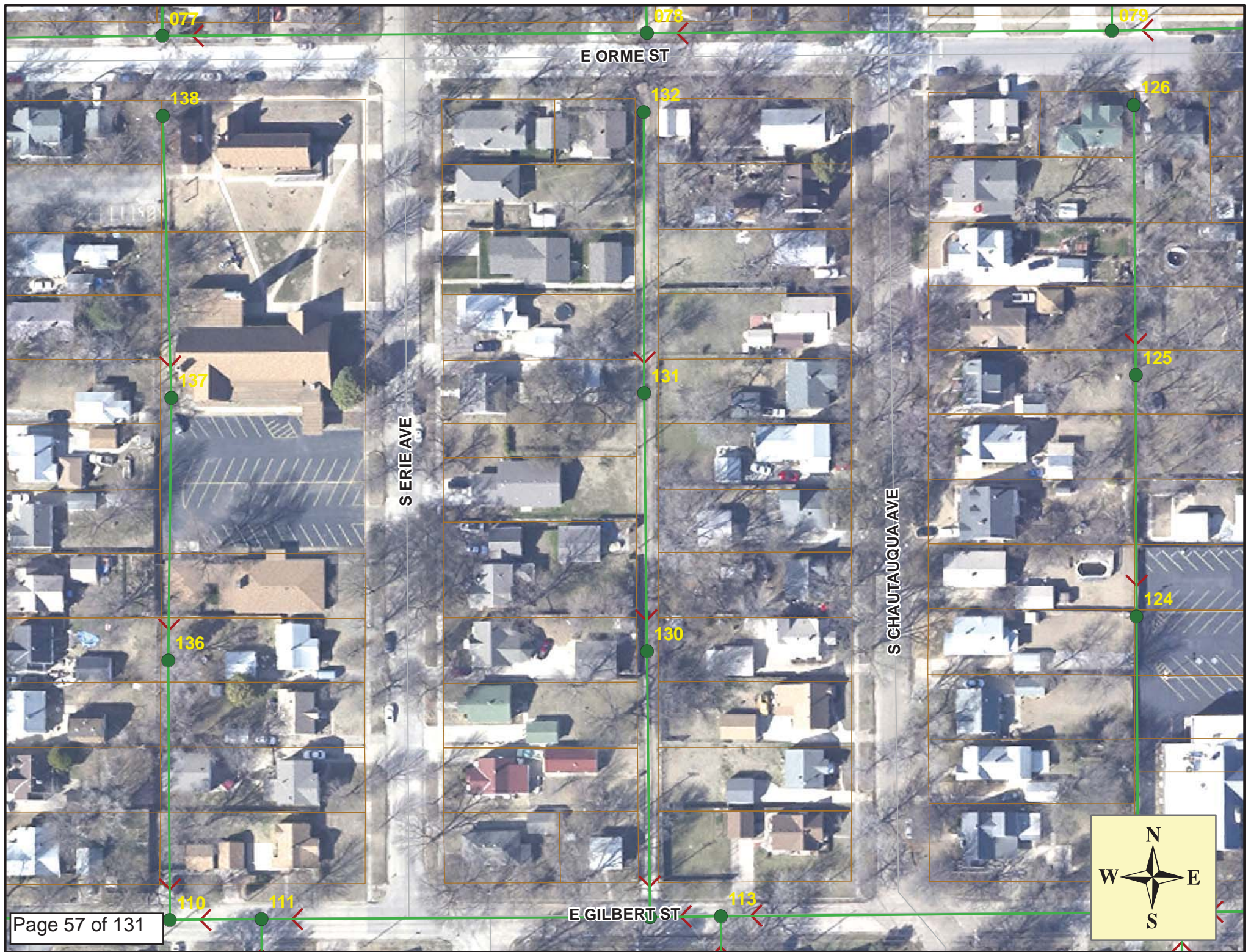
1:49 PM

US Structure: 5646-133 712 S VOLUTSIA ST Date Insp: 11/15/2011 Basin: EC01F
 DS Structure: 5646-111 2822 E GILBERT ST Dir Televised: Upstream To Downstream

33	140.9	Crack-Radial	4	0.008	10	0	0.008
34	153.7	Crack-Radial	3	0.004	5	0	0.004
35	156.4	Crack-Radial	3	0.004	5	0	0.004
36	162.6	Sealed Off Wye	1	0.000	0	0	0.000
37	165.6	Sealed Off Wye	1	0.000	0	0	0.000
38	166.3	Crack-Radial	4	0.008	10	0	0.008
39	168.8	Crack-Radial	3	0.004	5	0	0.004
40	176.3	Crack-Radial	2	0.002	2	0	0.002
41	181.3	Crack-Radial	3	0.004	5	0	0.004
42	188.7	Crack-Radial	3	0.004	5	0	0.004
43	191.6	Crack-Radial	3	0.004	5	0	0.004
44	193.8	Crack-Radial	3	0.004	5	0	0.004
45	196.7	Crack-Radial	4	0.008	10	0	0.008
46	199.6	5646-111 DS Manhole	1	0.000	0	0	0.000



SITE 8



Video Inspection Master Report

5/17/2013

9:23 AM

US Structure: 5646-132 2917 E ORME ST Date Insp: 11/7/2011 Basin: EC01F
 DS Structure: 5646-131 616 S ERIE ST Dir Televised: Upstream To Downstream

Pipe Information

Shape: Round Length Status: Project No. : C-021
 Dia/Ht: 8 Material: VCP
 Length: 219.0 Slope: 0.151

Obs. #	VTR Counter	Distance	Location	Description	Rating	Obsrvd (gpm)	Ratings			Remain (gpm)	
							Est. (gpm)	Struct	Clean		
1		0.0	5646-132	US Manhole	1						
2		6.9		Crack-Radial	4	0.008	10	0	0.008		
3		8.1	601 S CHAUTAUQUA	Break-In Conn	2	0.002	0	0	0.002		
				(connection repaired by Sewer Maintenance since this televising) (8 ft deep)							
4		11.1		Sealed Off Wye	1	0.000	0	0	0.000		
5		16.9	2915 E ORME	Break-In Conn	4	0.008	60	0	0.008		
6		28.7		Sealed Off Wye	1	0.000	0	0	0.000		
7		31.2		Sealed Off Wye	1	0.000	0	0	0.000		
8		42.9	602 S ERIE	Break-In Conn	1	0.001	0	0	0.001		
9		44.7		Crack-Radial	2	0.002	2	0	0.002		
10		53.0	605 S CHAUTAUQUA	Wye Service	1	0.000	0	0	0.000		
11		55.9	608 S ERIE	Break-In Conn	1	0.001	0	0	0.001		
12		60.1		Crack-Radial	4	0.008	10	0	0.008		
13		65.1		Crack-Radial	5	0.010	18	0	0.010		
14		70.4		Crack-Radial	3	0.004	5	0	0.004		
15		79.6		Sealed Off Wye	1	0.000	0	0	0.000		
16		82.3		Sealed Off Wye	1	0.000	0	0	0.000		
17		105.1	615 S CHAUTAUQUA	Wye Service	1	0.000	0	0	0.000		
18		105.9		Crack-Radial	4	0.008	10	0	0.008		
19		107.4	610 S ERIE	Wye Service	1	0.000	0	0	0.000		
20		111.0		Crack-Radial	2	0.002	2	0	0.002		
21		115.9		Crack-Radial	3	0.004	5	0	0.004		
22		123.8		Crack-Radial	2	0.002	2	0	0.002		
23		130.4		Sealed Off Wye	1	0.000	0	0	0.000		
24		133.1		Sealed Off Wye	1	0.000	0	0	0.000		
25		136.3		Crack-Radial	3	0.004	5	0	0.004		
26		138.9		Crack-Radial	3	0.004	5	0	0.004		
27		144.0		Crack-Radial	1	0.001	1	0	0.001		
28		151.7		Crack-Radial	3	0.004	5	0	0.004		
29		154.3		Crack-Radial	5	0.010	18	0	0.010		
31		155.7	671 S CHAUTAUQUA	Wye Service	5	0.000	400	0	0.000		
				(connection repaired by Sewer Maintenance since this televising)							
33		158.6	614 S ERIE	Wye Service	5	0.000	400	0	0.000		
				(connection repaired by Sewer Maintenance since this televising)							

Video Inspection Master Report

5/17/2013

9:23 AM

US Structure: 5646-132 2917 E ORME ST Date Insp: 11/7/2011 Basin: EC01F
 DS Structure: 5646-131 616 S ERIE ST Dir Televised: Upstream To Downstream

34	161.7		Crack-Radial	4	0.008	10	0	0.008
35	172.1		Crack-Radial	3	0.004	5	0	0.004
36	174.7		Crack-Radial	2	0.002	2	0	0.002
37	181.3		Sealed Off Wye	1	0.000	0	0	0.000
38	183.9		Sealed Off Wye	1	0.000	0	0	0.000
39	187.3		Crack-Radial	3	0.004	5	0	0.004
40	189.8		Crack-Radial	2	0.002	2	0	0.002
41	192.5		Crack-Radial	2	0.002	2	0	0.002
42	205.5	619 S CHAUTAUQUA	Break-In Conn	2	0.002	0	0	0.002
43	209.0		Sealed Off Wye	1	0.000	0	0	0.000
44	215.0		Crack-Radial	5	0.010	18	0	0.010
45	218.5	5646-131	DS Manhole	1	0.000	0	0	0.000

Video Inspection Master Report

5/17/2013

9:23 AM

US Structure: 5646-131 616 S ERIE ST Date Insp: 11/7/2011 Basin: EC01F
 DS Structure: 5646-130 642 S ERIE ST Dir Televised: Upstream To Downstream

Pipe Information

Shape: Round Length Status: Project No. : C-021
 Dia/Ht: 8 Material: VCP Index:
 Length: 199.5 Slope: 0.150 Surface:

Obs. #	VTR Counter	Distance	Location	Description	Rating	Obsrvd (gpm)	Ratings			Remain (gpm)
							Est. (gpm)	Struct	Clean	
1		0.0	5646-131	US Manhole	1					
2		9.3		Crack-Radial	2		0.002	2	0	0.002
3		13.5		Sealed Off Wye	1		0.000	0	0	0.000
4		15.1	616 S ERIE	Break-In Conn	1		0.001	0	0	0.001
5		19.3		Crack-Radial	2		0.002	2	0	0.002
6		21.9		Crack-Radial	3		0.004	5	0	0.004
7		26.4		Broken Pipe	4		0.030	78	0	0.030
8		37.0		Crack-Radial	1		0.001	1	0	0.001
9		38.6	621 S CHAUTAUQUA	Wye Service	5		0.000	400	0	0.000
(connection repaired by Sewer Maintenance since this televising)										
11		41.3		Sealed Off Wye	1		0.000	0	0	0.000
12		47.2		Crack-Radial	3		0.004	5	0	0.004
13		55.0		Crack-Radial	4		0.008	10	0	0.008
14		59.6		Crack-Radial	3		0.004	5	0	0.004
15		64.1		Sealed Off Wye	1		0.000	0	0	0.000
16		65.9	624 S ERIE / PVC	Break-In Conn	1		0.001	0	0	0.001
17		67.9		Crack-Radial	2		0.002	2	0	0.002
18		70.2		Crack-Radial	2		0.002	2	0	0.002
19		75.3		Crack-Radial	4		0.008	10	0	0.008
20		85.4		Crack-Radial	3		0.004	5	0	0.004
21		89.0	633 S CHAUTAUQUA	Wye Service	2		0.000	0	0	0.000
22		92.5		Sealed Off Wye	1		0.000	0	0	0.000
23		100.8		Crack-Radial	5		0.010	18	0	0.010
24		108.4		Crack-Radial	2		0.002	2	0	0.002
25		115.2		Sealed Off Wye	1		0.000	0	0	0.000
26		117.7		Sealed Off Wye	1		0.000	0	0	0.000
27		128.9		Crack-Radial	1		0.001	1	0	0.001
28		140.9		Sealed Off Wye	1		0.000	0	0	0.000
29		143.4		Sealed Off Wye	1		0.000	0	0	0.000
30		147.1		Crack-Radial	2		0.002	2	0	0.002
31		149.2		Crack-Radial	3		0.004	5	0	0.004
32		156.8		Crack-Radial	2		0.002	2	0	0.002
33		160.0	637 S CHAUTAUQUA	Break-In Conn	2		0.002	0	0	0.002

Video Inspection Master Report

5/17/2013

9:23 AM

US Structure: 5646-131 616 S ERIE ST Date Insp: 11/7/2011 Basin: EC01F
 DS Structure: 5646-130 642 S ERIE ST Dir Televised: Upstream To Downstream

34	166.2		Sealed Off Wye	1	0.000	0	0	0.000
35	167.7	638 S ERIE	Wye Service	1	0.000	0	0	0.000
36	177.1		Crack-Radial	5	0.010	18	0	0.010
37	182.2		Crack-Radial	3	0.004	5	0	0.004
38	184.7		Crack-Radial	3	0.004	5	0	0.004
39	189.7		Crack-Radial	3	0.004	5	0	0.004
40	192.6		Crack-Radial	2	0.002	2	0	0.002
41	194.1	637 S CHAUTAUQUA	Wye Service	1	0.000	0	0	0.000
42	196.5	642 S ERIE / roots	Wye Service	3	0.000	2	0	0.000
43	201.1	5646-130	DS Manhole	2				MH bottom is bad & needs replaced. -LML

Video Inspection Master Report

5/17/2013

9:23 AM

US Structure: 5646-130 642 S ERIE ST Date Insp: 11/7/2011 Basin: EC01F
 DS Structure: 5646-112 2908 E GILBERT ST Dir Televised: Upstream To Downstream

Pipe Information

Shape: Round Length Status: Project No. : C-021
 Dia/Ht: 8 Material: VCP Index:
 Length: 204.5 Slope: 0.147 Surface:

Obs. #	VTR Counter	Distance	Location	Description	Rating	Obsrvd (gpm)	Ratings			Remain (gpm)
							Est. (gpm)	Struct	Clean	
1		0.0	5646-130	US Manhole	2					
2		9.0		Crack-Radial	3	0.004	5	0	0.004	
3		11.5		Crack-Radial	3	0.004	5	0	0.004	
4		18.2		Sealed Off Wye	1	0.000	0	0	0.000	
5		21.2		Sealed Off Wye	1	0.000	0	0	0.000	
6		21.6		Crack-Radial	3	0.004	5	0	0.004	
7		24.1		Broken Pipe	4	0.030	78	0	0.030	
8		26.8		Crack-Radial	3	0.004	5	0	0.004	
9		32.1		Crack-Radial	1	0.001	1	0	0.001	
10		39.6		Crack-Radial	3	0.004	5	0	0.004	
11		42.5	641 S CHAUTAUQUA	Wye Service	1	0.000	0	0	0.000	
12		46.5	642 S ERIE	Wye Service	1	0.000	0	0	0.000	
13		47.4		Crack-Radial	3	0.004	5	0	0.004	
14		49.8		Crack-Radial	3	0.004	5	0	0.004	
15		57.4		Crack-Radial	2	0.002	2	0	0.002	
16		62.5		Crack-Radial	2	0.002	2	0	0.002	
17		69.3		Sealed Off Wye	1	0.000	0	0	0.000	
18		72.0		Sealed Off Wye	1	0.000	0	0	0.000	
19		75.2		Crack-Radial	3	0.004	5	0	0.004	
20		78.2		Crack-Radial	2	0.002	2	0	0.002	
21		85.6		Crack-Radial	3	0.004	5	0	0.004	
22		88.1		Crack-Radial	3	0.004	5	0	0.004	
23		95.0		Sealed Off Wye	1	0.000	0	0	0.000	
24		97.8		Sealed Off Wye	1	0.000	0	0	0.000	
25		106.1		Crack-Radial	2	0.002	2	0	0.002	
26		108.7		Crack-Radial	2	0.002	2	0	0.002	
27		111.2		Crack-Radial	2	0.002	2	0	0.002	
28		119.7	647 S CHAUTAUQUA	Wye Service / roots	4	0.000	60	0	0.000	
29		121.5		Crack-Radial	3	0.004	5	0	0.004	
30		122.2	648 S ERIE	Wye Service / roots	3	0.000	2	0	0.000	
31		126.4		Crack-Radial	2	0.002	2	0	0.002	
32		128.8		Crack-Radial	2	0.002	2	0	0.002	
33		136.5		Crack-Radial	2	0.002	2	0	0.002	
34		139.0		Crack-Radial	3	0.004	5	0	0.004	

Video Inspection Master Report

5/17/2013

9:23 AM

US Structure: 5646-130 642 S ERIE ST Date Insp: 11/7/2011 Basin: EC01F
 DS Structure: 5646-112 2908 E GILBERT ST Dir Televised: Upstream To Downstream

35	143.3	652 S ERIE	Break-In Conn	4	0.008	60	0	0.008
36	144.6	651 S CHAUTAUQUA	Wye Service	1	0.000	0	0	0.000
37	146.7		Crack-Radial	2	0.002	2	0	0.002
38	148.4		Sealed Off Wye	1	0.000	0	0	0.000
39	149.2		Crack-Radial	4	0.008	10	0	0.008
40	151.5	656 S ERIE	Break-In Conn	2	0.002	0	0	0.002
41	154.2		Crack-Radial	2	0.002	2	0	0.002
42	159.4		Crack-Radial	3	0.004	5	0	0.004
43	161.9		Crack-Radial	3	0.004	5	0	0.004
44	171.2		Sealed Off Wye	1	0.000	0	0	0.000
45	173.7		Sealed Off Wye	1	0.000	0	0	0.000
46	174.5		Crack-Radial	3	0.004	5	0	0.004
47	179.7		Crack-Radial	3	0.004	5	0	0.004
48	184.7		Crack-Radial	2	0.002	2	0	0.002
49	187.3		Crack-Radial	3	0.004	5	0	0.004
50	189.6		Crack-Radial	3	0.004	5	0	0.004
51	194.8		Crack-Radial	3	0.004	5	0	0.004
52	193.9		Crack-Horizontal	3	0.004	5	0	0.004
53	197.4		Crack-Radial	3	0.004	5	0	0.004
54	199.8		Crack-Radial	3	0.004	5	0	0.004
55	202.1		Crack-Radial	3	0.004	5	0	0.004
56	205.8	5646-112	DS Manhole	1	0.000	0	0	0.000

There are many joints with roots that are not called out on the tv log. -LML