

Install 836 lf of 8"
Cured-in-Place Liner
from MH 5846-076
to MH 5846-012

MH 5846-076
815 Pinecrest
Approx depth = 9.9 ft

MH 5846-075
818 Bleckley
Approx depth = 9.8 ft

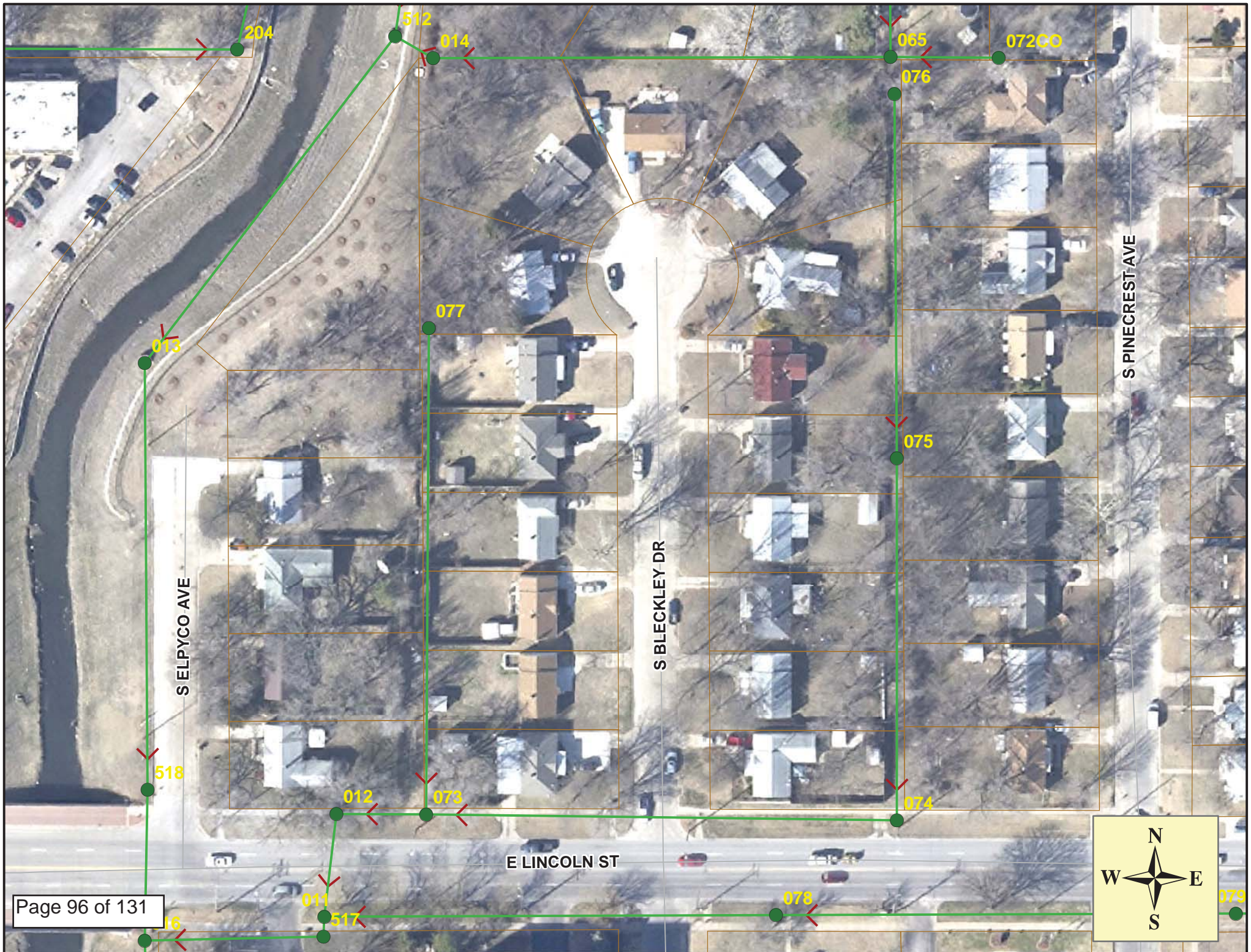
MH 5846-074
Approx depth = 10.2 ft

MH 5846-012
(pipe has an inside drop)
Approx MH depth = 15.7

MH 5846-073
Approx depth = 10.7 ft

SITE 15

Page 95 of 131



Video Inspection Master Report

7/23/2013

2:44 PM

US Structure: 5846-076 815 PINECREST ST Date Insp: 2/27/2012 Basin: E04A
 DS Structure: 5846-075 818 S BLECKLEY DR Dir Televised: Downstream To Upstream

Pipe Information

Shape: Round Length Status: Project No. : F-178
 Dia/Ht: 8 Material: VCP Index:
 Length: 238.2 Slope: 0.618 Surface:

Obs. #	VTR Counter	Distance	Location	Description	Rating	Obsrvd (gpm)	Ratings		Remain (gpm)
							Est. (gpm)	Struct Clean	
1		0.0	TV AGAINST FLOW	5846-075 DS Manhole	2				
2		6.6		Break-In Conn	1				
3	837 S PINE CREST / PVC	9.6		Break-In Conn	1				
4	818 S BLECKLEY DRIVE / PVC	12.8		Roots	2				
5		22.0		Roots	2				
6		43.1		Break-In Conn	2				
7	812 S BLECKLEY DRIVE	54.1		Break-In Conn	1				
8	831 S PINE CREST	61.0		Sealed Wye Service	1				
9		64.5	Ball of roots	Sealed Wye Service	1				
10		111.9		Break-In Conn	2				
11	825 S PINE CREST / roots around PVC service	113.1		Roots	3				
12		115.3		Wye Service	1				
13	808 S BLECKLEY DRIVE	172.6		Break-In Conn	1				
14	819 S PINE CREST / PVC	175.7		Break-In Conn	1				
15	804 S BLECKLEY DRIVE / PVC	226.8		Break-In Conn	1				
16	815 S PINE CREST / PVC	237.7		5846-076 US Manhole	3				

Gapped joints & roots at joints not listed on the log. Looks like roots at every joint. -LML

Video Inspection Master Report

7/23/2013

2:44 PM

US Structure: 5846-075 818 S BLECKLEY DR Date Insp: 2/27/2012 Basin: E04A
 DS Structure: 5846-074 859 PINECREST ST Dir Televised: Downstream To Upstream

Pipe Information

Project No. : F-178 Dia/Ht: 8 Material: VCP Length: 236.3

Obs. #	VTR Counter	Distance	Location	Description	Rating	Obsrvd (gpm)	Ratings			Remain (gpm)
							Est. (gpm)	Struct	Clean	
1		0.0	TV AGAINST THE FLOW	5846-074 DS Manhole	1					
2		0.0	Joint		Offset	2				
3		12.2	Joint		Offset	3				
4		15.4	Joint		Offset	3				
5		18.4	Joint		Offset	3				
6		26.8	859 S PINE CREST		Break-In Conn	2				
7		27.7			Roots	3				
8		30.0	838 S BLECKLEY DRIVE		Break-In Conn	0				
9		45.3			Roots	3				
10		48.4			Roots	3				
11		51.3			Roots	3				
12		54.4			Roots	3				
13		57.5			Roots	3				
14		63.4			Roots	3				
15		69.6			Roots	2				
16		72.4			Roots	2				
17		81.1	853 S PINE CREST		Break-In Conn	2				
18		81.8			Roots	3				
19		84.5	832 S BLECKLEY DRIVE		Break-In Conn	2				
20		93.7	Joint		Offset	3				
21		132.2	847 S PINE CREST		roots / Wye Service	2				
22		135.4	828 S BLECKLEY DRIVE		Break-In Conn	2				
23		177.7	822 S BLECKLEY DRIVE		Break-In Conn	1				
24		178.2			Roots	2				
25		181.0			Roots	2				
26		189.6	843 S PINE CREST		Break-In Conn	3				Bootleg connection
27		193.3	ball of roots		Wye Service	1				
28		208.1			Roots	2				
29		217.2			Roots	2				
30		235.8	5846-075		US Manhole	3				

There was silt in the pipe. Offset joints & gapped joints may be letting in silt. Lots of roots at joints also. -LML

Video Inspection Master Report

7/23/2013

2:44 PM

US Structure: 5846-074 859 PINECREST ST Date Insp: 2/23/2012 Basin: E04A
 DS Structure: 5846-073 837 BLECKLEY DR Dir Televised: Upstream To Downstream

Pipe Information

Shape:	Round	Length Status:		Project No. :	F-178
Dia/Ht:	8	Material:	VCP	Index:	
Length:	310.3	Slope:	0.352	Surface:	

Comments: LINE HAS LOTS OF OFF SET JOINTS IN BOTTOM OF PIPE , NEEDS REHAB,

Obs. #	VTR Counter	Distance	Location	Description	Rating	Obsrvd (gpm)	Ratings		Remain (gpm)
							Est. (gpm)	Struct Clean	
1		0.0		5846-074 US Manhole	1				
2		122.7	Joint	Offset	3				
3		192.0	Offset joint w / roots	Infiltration	3				
4		198.0	Offset joint w / roots	Infiltration	2				
5		309.4		5846-073 DS Manhole	3				

Lots of small offset joints and roots at joints that are not called out on the log. - LML

Video Inspection Master Report

7/24/2013

8:25 AM

US Structure: 5846-073 837 BLECKLEY DR Date Insp: 2/23/2012 Basin: E04A
 Dir Televised: Upstream To Downstream

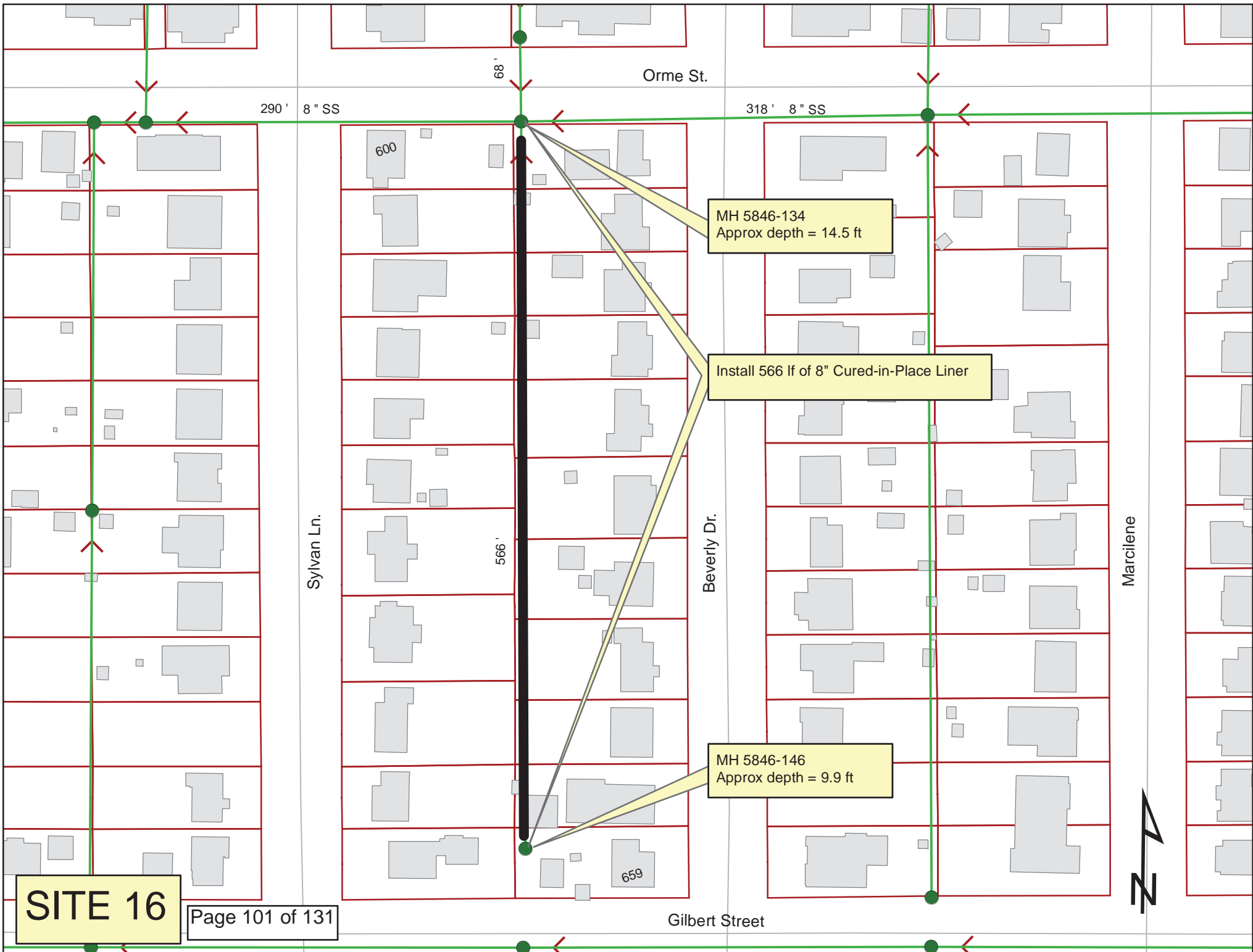
DS Structure: 5846-012 858 ELPYCO AV

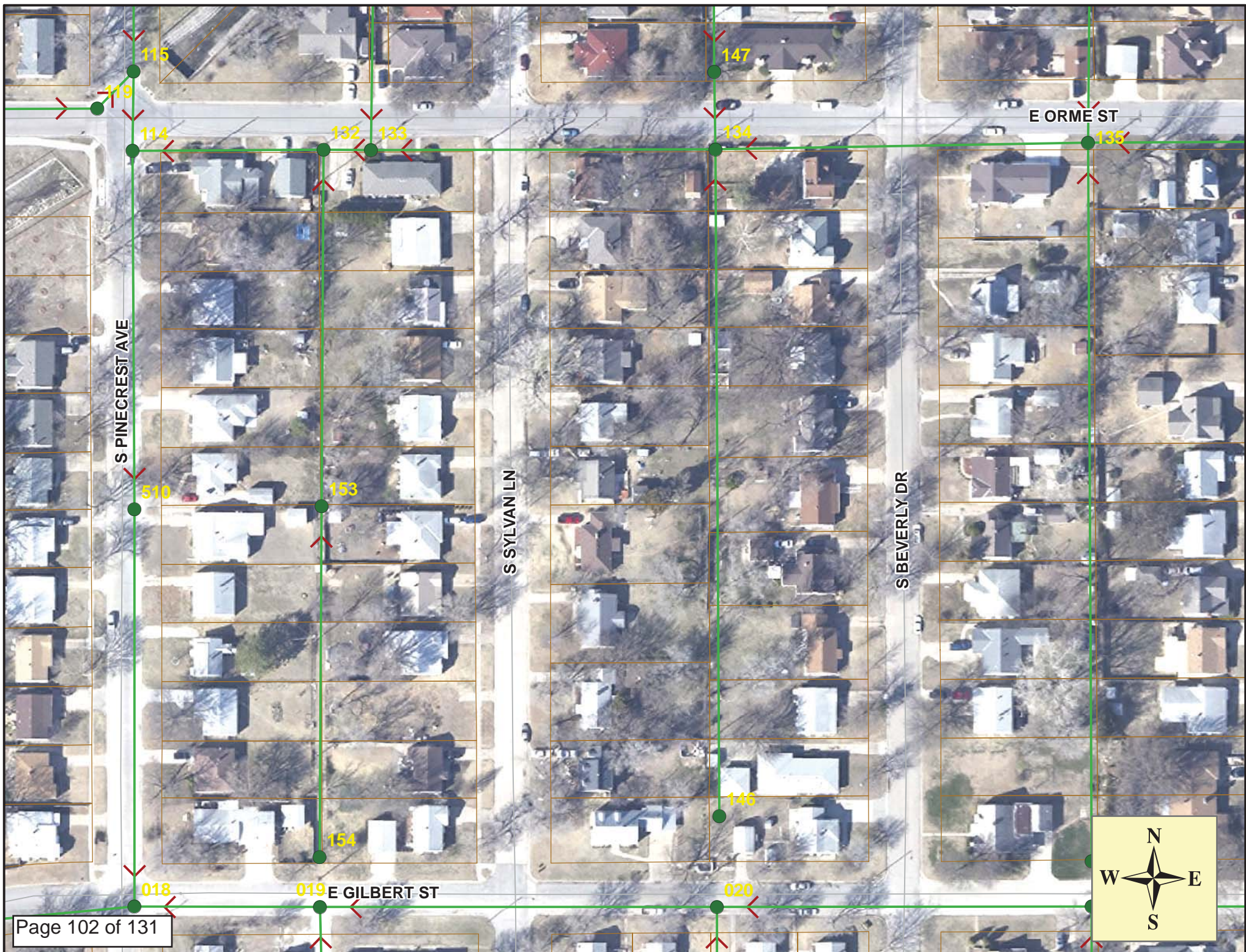
Pipe Information

Shape:	Round	Length Status:	TV Inspections	Project No. :	F-178
Dia/Ht:	8	Material:	VCP	Index:	
Length:	53.0	Slope:	0.453	Surface:	

Comments: LINE HAS LOTS OF OFFSET JOINTS IN BOTTOM OF PIPE, LINE NEEDS REHAB,

Obs. #	VTR Counter	Distance	Location	Description	Rating	Obsrvd (gpm)	Est. (gpm)	Ratings		Remain (gpm)
								Struct	Clean	
1		0.0		US Manhole	1					
2		23.1	Joint	Offset	3					
		50.0	Invert	Outside Drop Hole						
3		51.5	5846-012	DS Manhole	3					





Video Inspection Master Report

7/24/2013

9:40 AM

US Structure: 5846-146 659 BEVERLY ST Date Insp: 3/1/2012 Basin: E04D
 DS Structure: 5846-134 601 BEVERLY ST Dir Televised: Upstream To Downstream

Pipe Information

Project No. : E-026 Dia/Ht: 8 Material: VCP Length: 566.0

Obs. #	VTR Counter	Distance	Location	Description	Rating	Ratings			Remain (gpm)
						Obsrvd (gpm)	Est. (gpm)	Struct Clean	
1		0.0	5846-146	US Manhole	1				
2		0.0	Joint	Offset	3				
3		0.0		Roots	3				
4		0.0		Wye Service	2				
5		6.9		Wye Service	1	(wyes w/o addresses are sealed off) - LML			
6		13.8		Break-In Conn	3				
7		34.0		Break-In Conn	3				
8		51.9		Wye Service	1				
9		55.7		Wye Service	1				
10		91.3		Break-In Conn	3				
11		99.5	Joint	Offset	2				
12		100.6		Wye Service	2				
13		104.6		Wye Service	1				
14		132.2		Break-In Conn	3				
15		150.1		Wye Service	1				
16		153.2		Wye Service	1				
17		153.2		Break-In Conn	4				
18		188.8		Break-In Conn	3				
19		197.7		Crack-Radial	2				
20		197.7		Crack-Radial	2				
21		198.7		Wye Service	1				
22		202.0		Wye Service	1				
23		225.2		Break-In Conn	2				
24		250.6		Wye Service	1				
25		253.7		Wye Service	1				

Video Inspection Master Report

7/24/2013

9:40 AM

US Structure: 5846-146 659 BEVERLY ST Date Insp: 3/1/2012 Basin: E04D
 DS Structure: 5846-134 601 BEVERLY ST Dir Televised: Upstream To Downstream

26	259.0		Break-In Conn	4
627 S BEVERLY				
27	299.0		Wye Service	1
28	302.1		Wye Service	1
628 S SYLVAN				
29	313.1		Crack-Horizontal	2
30	314.0		Crack-Horizontal	2
31	333.6		Roots	3
32	334.9		Break-In Conn	3
611 S BEVERLY				
33	343.5		Crack-Horizontal	2
34	343.8		Crack-Horizontal	2
35	347.5		Wye Service	1
36	353.0		Wye Service	2
622 S SYLVAN				
37	367.7		Break-In Conn	3
618 S SYLVAN				
38	391.4		Roots	3
39	393.8		Break-In Conn	2
609 S BEVERLY				
40	397.5		Wye Service	1
41	400.8		Wye Service	1
42	415.7		Wye Service	2
605 S BEVERLY				
43	416.0	Joint	Offset	2
	430.0		Infiltration / mineral deposit at the joint	
44	449.3		PVC begins	1
45	449.6		PVC Break-In Conn	1
612 S SYLVAN				
46	452.6		PVC ends	1
47	466.6	Crown, invert and sides	Broken Pipe	3
48	470.3	Crown, invert and sides	Broken Pipe	3
49	473.2		PVC begins	1
50	474.7		PVC Break-In Conn	2
606 S SYLVAN				
51	476.1		PVC ends	1
52	476.1	possible infiltration at cracks	Crack-Horizontal	3
53	493.0		Break-In Conn	4
603 S BEVERLY				
54	494.7	Joint	Offset	3
55	499.9		Wye Service	1
56	502.7		Wye Service	1
57	564.8	5846-134	DS Manhole	2