

PRIVATE PROJECT STORMWATER PLAN TO SERVE CVS/pharmacy®

CITY OF WICHITA PROJECT NO. 107 PPD (607861)

CS#64724 STORE#10077 SWC 13TH AND MAIZE
WICHITA, KS
LOT 1 OF BRANDT COMMERCIAL 2ND ADDITION
ZONED: LC LIMITED COMMERCIAL
TAX ID#134180110400100, 134180110400202

AS BUILT PLANS

CONTRACTOR:	McCullough Excavation
INSPECTOR:	Ryan McCullough P.E., McCullough Excavation
PDF BY:	RDM 5-07-2013

PROJECT DIRECTORY

OWNER
CVS REALTY, CO.
1165 N CLARK ST SUITE 305
CHICAGO, IL 60610
(312) 953-6322
CONTACT: MR. RICHARD E. SMART

DEVELOPER
VELMEIR COMPANIES
5757 W. MAPLE, SUITE 800
WEST BLOOMFIELD, MI 48322
(248) 794-9768
CONTACT: MR. JIM COLLIER

ARCHITECT
NORR, LLC
719 GRISWOLD STREET
DETROIT, MI 48226
(313) 324-3100
CONTACT: MR. SCOTT ROBACH

CIVIL ENGINEER
PREMIER CIVIL ENGINEERING, LLC
308 TCW COURT
LAKE SAINT LOUIS, MO 63367
(314) 925-7452
CONTACT: MR. MATT FOGARTY

SURVEYOR
SAVOY COMPANY, P.A.
433 S. HYDRAULIC
WICHITA, KS 67211
(316) 265-0005
CONTACT: MR. MARK SAVOY

MUNICIPALITY
CITY OF WICHITA, KS

GEOTECHNICAL/ENVIRONMENTAL ENGINEER
TERRACON CONSULTANTS
1815 S. EISENHOWER
WICHITA, KS 67209
(316) 262 0717
CONTACT: GEORGE A. EL TANNOURY, P.E.

CITY OF WICHITA TRAFFIC ENGINEER
CONTACT: PAUL GUNZELMAN, P.E.
455 N. MAIN ST. 7TH FLOOR
WICHITA, KS 67202
316-268-4393

UTILITY PROVIDERS

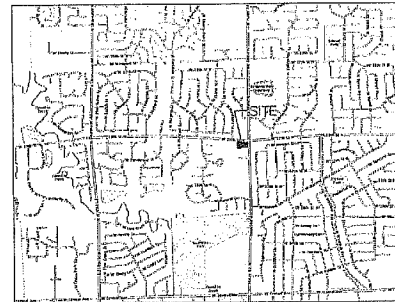
WESTAR ENERGY
(316) 261-6734
CONTACT: MRS. MARSHA JESSE

KANSAS GAS SERVICE
(316) 832-3126
CONTACT: MR. JIM COE

AT&T
(314) 957-3789
CONTACT: MR. MARK ADAMS

**PUBLIC WORKS & UTILITIES
STORMWATER MANAGEMENT DIVISION**
CITY HALL, 8TH FLOOR
455 N. MAIN
WICHITA, KANSAS 67202
(316) 268-4498
CONTACT: SCOTT LINDEBAK

CITY OF WICHITA WATER UTILITIES
CITY HALL, 8TH FLOOR
455 N. MAIN
WICHITA, KANSAS 67202
(316) 268-4555
CONTACT: GREG LOLLEY

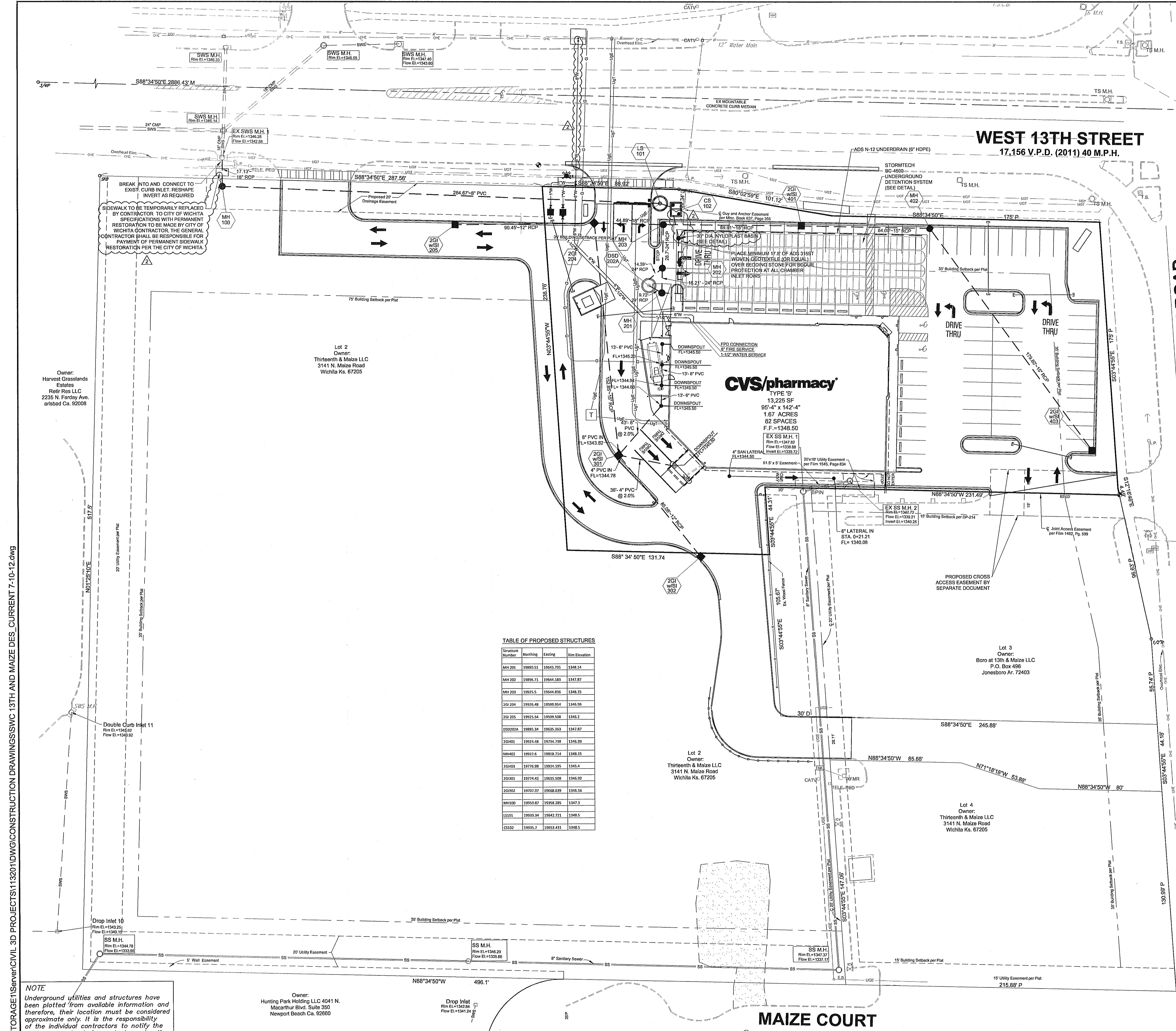


VICINITY MAP
NOT TO SCALE

SITE DISTURBED AREA=2.21 ACRES

EXIST. UTILITY SYMBOL LEGEND

○	4" BENCH MARK
□	6" WATER MAIN
■	8" SANITARY SEWER
◆	12" STORM WATER SEWER
◇	18" WATER MAIN OR FIRE MAIN
◇	24" WATER MAIN OR FIRE MAIN
◇	30" WATER MAIN OR FIRE MAIN
◇	36" WATER MAIN OR FIRE MAIN
◇	42" WATER MAIN OR FIRE MAIN
◇	48" WATER MAIN OR FIRE MAIN
◇	54" WATER MAIN OR FIRE MAIN
◇	60" WATER MAIN OR FIRE MAIN
◇	66" WATER MAIN OR FIRE MAIN
◇	72" WATER MAIN OR FIRE MAIN
◇	78" WATER MAIN OR FIRE MAIN
◇	84" WATER MAIN OR FIRE MAIN
◇	90" WATER MAIN OR FIRE MAIN
◇	96" WATER MAIN OR FIRE MAIN
◇	102" WATER MAIN OR FIRE MAIN
◇	108" WATER MAIN OR FIRE MAIN
◇	114" WATER MAIN OR FIRE MAIN
◇	120" WATER MAIN OR FIRE MAIN
◇	126" WATER MAIN OR FIRE MAIN
◇	132" WATER MAIN OR FIRE MAIN
◇	138" WATER MAIN OR FIRE MAIN
◇	144" WATER MAIN OR FIRE MAIN
◇	150" WATER MAIN OR FIRE MAIN
◇	156" WATER MAIN OR FIRE MAIN
◇	162" WATER MAIN OR FIRE MAIN
◇	168" WATER MAIN OR FIRE MAIN
◇	174" WATER MAIN OR FIRE MAIN
◇	180" WATER MAIN OR FIRE MAIN
◇	186" WATER MAIN OR FIRE MAIN
◇	192" WATER MAIN OR FIRE MAIN
◇	198" WATER MAIN OR FIRE MAIN
◇	204" WATER MAIN OR FIRE MAIN
◇	210" WATER MAIN OR FIRE MAIN
◇	216" WATER MAIN OR FIRE MAIN
◇	222" WATER MAIN OR FIRE MAIN
◇	228" WATER MAIN OR FIRE MAIN
◇	234" WATER MAIN OR FIRE MAIN
◇	240" WATER MAIN OR FIRE MAIN
◇	246" WATER MAIN OR FIRE MAIN
◇	252" WATER MAIN OR FIRE MAIN
◇	258" WATER MAIN OR FIRE MAIN
◇	264" WATER MAIN OR FIRE MAIN
◇	270" WATER MAIN OR FIRE MAIN
◇	276" WATER MAIN OR FIRE MAIN
◇	282" WATER MAIN OR FIRE MAIN
◇	288" WATER MAIN OR FIRE MAIN
◇	294" WATER MAIN OR FIRE MAIN
◇	300" WATER MAIN OR FIRE MAIN
◇	306" WATER MAIN OR FIRE MAIN
◇	312" WATER MAIN OR FIRE MAIN
◇	318" WATER MAIN OR FIRE MAIN
◇	324" WATER MAIN OR FIRE MAIN
◇	330" WATER MAIN OR FIRE MAIN
◇	336" WATER MAIN OR FIRE MAIN
◇	342" WATER MAIN OR FIRE MAIN
◇	348" WATER MAIN OR FIRE MAIN
◇	354" WATER MAIN OR FIRE MAIN
◇	360" WATER MAIN OR FIRE MAIN
◇	366" WATER MAIN OR FIRE MAIN
◇	372" WATER MAIN OR FIRE MAIN
◇	378" WATER MAIN OR FIRE MAIN
◇	384" WATER MAIN OR FIRE MAIN
◇	390" WATER MAIN OR FIRE MAIN
◇	396" WATER MAIN OR FIRE MAIN
◇	402" WATER MAIN OR FIRE MAIN
◇	408" WATER MAIN OR FIRE MAIN
◇	414" WATER MAIN OR FIRE MAIN
◇	420" WATER MAIN OR FIRE MAIN
◇	426" WATER MAIN OR FIRE MAIN
◇	432" WATER MAIN OR FIRE MAIN
◇	438" WATER MAIN OR FIRE MAIN
◇	444" WATER MAIN OR FIRE MAIN
◇	450" WATER MAIN OR FIRE MAIN
◇	456" WATER MAIN OR FIRE MAIN
◇	462" WATER MAIN OR FIRE MAIN
◇	468" WATER MAIN OR FIRE MAIN
◇	474" WATER MAIN OR FIRE MAIN
◇	480" WATER MAIN OR FIRE MAIN
◇	486" WATER MAIN OR FIRE MAIN
◇	492" WATER MAIN OR FIRE MAIN
◇	498" WATER MAIN OR FIRE MAIN
◇	504" WATER MAIN OR FIRE MAIN
◇	510" WATER MAIN OR FIRE MAIN
◇	516" WATER MAIN OR FIRE MAIN
◇	522" WATER MAIN OR FIRE MAIN
◇	528" WATER MAIN OR FIRE MAIN
◇	534" WATER MAIN OR FIRE MAIN
◇	540" WATER MAIN OR FIRE MAIN
◇	546" WATER MAIN OR FIRE MAIN
◇	552" WATER MAIN OR FIRE MAIN
◇	558" WATER MAIN OR FIRE MAIN
◇	564" WATER MAIN OR FIRE MAIN
◇	570" WATER MAIN OR FIRE MAIN
◇	576" WATER MAIN OR FIRE MAIN
◇	582" WATER MAIN OR FIRE MAIN
◇	588" WATER MAIN OR FIRE MAIN
◇	594" WATER MAIN OR FIRE MAIN
◇	600" WATER MAIN OR FIRE MAIN
◇	606" WATER MAIN OR FIRE MAIN
◇	612" WATER MAIN OR FIRE MAIN
◇	618" WATER MAIN OR FIRE MAIN
◇	624" WATER MAIN OR FIRE MAIN
◇	630" WATER MAIN OR FIRE MAIN
◇	636" WATER MAIN OR FIRE MAIN
◇	642" WATER MAIN OR FIRE MAIN
◇	648" WATER MAIN OR FIRE MAIN
◇	654" WATER MAIN OR FIRE MAIN
◇	660" WATER MAIN OR FIRE MAIN
◇	666" WATER MAIN OR FIRE MAIN
◇	672" WATER MAIN OR FIRE MAIN
◇	678" WATER MAIN OR FIRE MAIN
◇	684" WATER MAIN OR FIRE MAIN
◇	690" WATER MAIN OR FIRE MAIN
◇	696" WATER MAIN OR FIRE MAIN
◇	702" WATER MAIN OR FIRE MAIN
◇	708" WATER MAIN OR FIRE MAIN
◇	714" WATER MAIN OR FIRE MAIN
◇	720" WATER MAIN OR FIRE MAIN
◇	726" WATER MAIN OR FIRE MAIN
◇	732" WATER MAIN OR FIRE MAIN
◇	738" WATER MAIN OR FIRE MAIN
◇	744" WATER MAIN OR FIRE MAIN
◇	750" WATER MAIN OR FIRE MAIN
◇	756" WATER MAIN OR FIRE MAIN
◇	762" WATER MAIN OR FIRE MAIN
◇	768" WATER MAIN OR FIRE MAIN
◇	774" WATER MAIN OR FIRE MAIN
◇	780" WATER MAIN OR FIRE MAIN
◇	786" WATER MAIN OR FIRE MAIN
◇	792" WATER MAIN OR FIRE MAIN
◇	798" WATER MAIN OR FIRE MAIN
◇	804" WATER MAIN OR FIRE MAIN
◇	810" WATER MAIN OR FIRE MAIN
◇	816" WATER MAIN OR FIRE MAIN
◇	822" WATER MAIN OR FIRE MAIN
◇	828" WATER MAIN OR FIRE MAIN
◇	834" WATER MAIN OR FIRE MAIN
◇	840" WATER MAIN OR FIRE MAIN
◇	846" WATER MAIN OR FIRE MAIN
◇	852" WATER MAIN OR FIRE MAIN
◇	858" WATER MAIN OR FIRE MAIN
◇	864" WATER MAIN OR FIRE MAIN
◇	870" WATER MAIN OR FIRE MAIN
◇	876" WATER MAIN OR FIRE MAIN
◇	882" WATER MAIN OR FIRE MAIN
◇	888" WATER MAIN OR FIRE MAIN
◇	894" WATER MAIN OR FIRE MAIN
◇	900" WATER MAIN OR FIRE MAIN
◇	906" WATER MAIN OR FIRE MAIN
◇	912" WATER MAIN OR FIRE MAIN
◇	918" WATER MAIN OR FIRE MAIN
◇	924" WATER MAIN OR FIRE MAIN
◇	930" WATER MAIN OR FIRE MAIN
◇	936" WATER MAIN OR FIRE MAIN
◇	942" WATER MAIN OR FIRE MAIN
◇	948" WATER MAIN OR FIRE MAIN
◇	954" WATER MAIN OR FIRE MAIN
◇	960" WATER MAIN OR FIRE MAIN
◇	966" WATER MAIN OR FIRE MAIN
◇	972" WATER MAIN OR FIRE MAIN
◇	978" WATER MAIN OR FIRE MAIN
◇	984" WATER MAIN OR FIRE MAIN
◇	990" WATER MAIN OR FIRE MAIN
◇	996" WATER MAIN OR FIRE MAIN
◇	1002" WATER MAIN OR FIRE MAIN
◇	1008" WATER MAIN OR FIRE MAIN
◇	1014" WATER MAIN OR FIRE MAIN
◇	1020" WATER MAIN OR FIRE MAIN
◇	1026" WATER MAIN OR FIRE MAIN
◇	1032" WATER MAIN OR FIRE MAIN
◇	1038" WATER MAIN OR FIRE MAIN
◇	1044" WATER MAIN OR FIRE MAIN
◇	1050" WATER MAIN OR FIRE MAIN
◇	1056" WATER MAIN OR FIRE MAIN
◇	1062" WATER MAIN OR FIRE MAIN
◇	1068" WATER MAIN OR FIRE MAIN
◇	1074" WATER MAIN OR FIRE MAIN
◇	1080" WATER MAIN OR FIRE MAIN
◇	1086" WATER MAIN OR FIRE MAIN
◇	1092" WATER MAIN OR FIRE MAIN
◇	1098" WATER MAIN OR FIRE MAIN
◇	1104" WATER MAIN OR FIRE MAIN
◇	1110" WATER MAIN OR FIRE MAIN
◇	1116" WATER MAIN OR FIRE MAIN
◇	1122" WATER MAIN OR FIRE MAIN
◇	1128" WATER MAIN OR FIRE MAIN
◇	1134" WATER MAIN OR FIRE MAIN
◇	1140" WATER MAIN OR FIRE MAIN
◇	1146" WATER MAIN OR FIRE MAIN
◇	1152" WATER MAIN OR FIRE MAIN
◇	1158" WATER MAIN OR FIRE MAIN
◇	1164" WATER MAIN OR FIRE MAIN
◇	1170" WATER MAIN OR FIRE MAIN
◇	1176" WATER MAIN OR FIRE MAIN
◇	1182" WATER MAIN OR FIRE MAIN
◇	1188" WATER MAIN OR FIRE MAIN
◇	1194" WATER MAIN OR FIRE MAIN
◇	1200" WATER MAIN OR FIRE MAIN
◇	1206" WATER MAIN OR FIRE MAIN
◇	1212" WATER MAIN OR FIRE MAIN
◇	1218" WATER MAIN OR FIRE MAIN
◇	1224" WATER MAIN OR FIRE MAIN
◇	1230" WATER MAIN OR FIRE MAIN
◇	1236" WATER MAIN OR FIRE MAIN
◇	1242" WATER MAIN OR FIRE MAIN
◇	1248" WATER MAIN OR FIRE MAIN
◇	1254" WATER MAIN OR FIRE MAIN
◇	1260" WATER MAIN OR FIRE MAIN
◇	1266" WATER MAIN OR FIRE MAIN
◇	1272" WATER MAIN OR FIRE MAIN
◇	1278" WATER MAIN OR FIRE MAIN
◇	1284" WATER MAIN OR FIRE MAIN
◇	1290" WATER MAIN OR FIRE MAIN
◇	1296" WATER MAIN OR FIRE MAIN
◇	1302" WATER MAIN OR FIRE MAIN
◇	1308" WATER MAIN OR FIRE MAIN
◇	1314" WATER MAIN OR FIRE MAIN
◇	1320" WATER MAIN OR FIRE MAIN
◇	1326" WATER MAIN OR FIRE MAIN
◇	1332" WATER MAIN OR FIRE MAIN
◇	1338" WATER MAIN OR FIRE MAIN
◇	1344" WATER MAIN OR FIRE MAIN
◇	1350" WATER MAIN OR FIRE MAIN
◇	1356" WATER MAIN OR FIRE MAIN
◇	1362" WATER MAIN OR FIRE MAIN
◇	1368" WATER MAIN OR FIRE MAIN
◇	1374" WATER MAIN OR FIRE MAIN
◇	1380" WATER MAIN OR FIRE MAIN
◇	1386" WATER MAIN OR FIRE MAIN
◇	1392" WATER MAIN OR FIRE MAIN
◇	1398" WATER MAIN OR FIRE MAIN
◇	1404" WATER MAIN OR FIRE MAIN
◇	1410" WATER MAIN OR FIRE MAIN
◇	1416" WATER MAIN OR FIRE MAIN
◇	1422" WATER MAIN OR FIRE MAIN
◇	1428" WATER MAIN OR FIRE MAIN
◇	1434" WATER MAIN OR FIRE MAIN
◇	1440" WATER MAIN OR FIRE MAIN
◇	1446" WATER MAIN OR FIRE MAIN
◇	1452" WATER MAIN OR FIRE MAIN
◇	1458" WATER MAIN OR FIRE MAIN
◇	1464" WATER MAIN OR FIRE MAIN
◇	1470" WATER MAIN OR FIRE MAIN
◇	1476" WATER MAIN OR FIRE MAIN
◇	1482" WATER MAIN OR FIRE MAIN
◇	1488" WATER MAIN OR FIRE MAIN
◇	1494" WATER MAIN OR FIRE MAIN
◇	1500" WATER MAIN OR FIRE MAIN
◇	1506" WATER MAIN OR FIRE MAIN
◇	1512" WATER MAIN OR FIRE MAIN
◇	1518" WATER MAIN OR FIRE MAIN
◇	1524" WATER MAIN OR FIRE MAIN
◇	1530" WATER MAIN OR FIRE MAIN
◇	1536" WATER MAIN OR FIRE MAIN
◇	1542" WATER MAIN OR FIRE MAIN
◇	1548" WATER MAIN OR FIRE MAIN
◇	1554" WATER MAIN OR FIRE MAIN
◇	1560" WATER MAIN OR FIRE MAIN
◇	1566" WATER MAIN OR FIRE MAIN
◇	1572" WATER MAIN OR FIRE MAIN
◇	1578" WATER MAIN OR FIRE MAIN
◇	1584" WATER MAIN OR FIRE MAIN
◇	1590" WATER MAIN OR FIRE MAIN
◇	1596" WATER MAIN OR FIRE MAIN
◇	1602" WATER MAIN OR FIRE MAIN
◇	1608" WATER MAIN OR FIRE MAIN
◇	1614" WATER MAIN OR FIRE MAIN
◇	1620" WATER MAIN OR FIRE MAIN
◇	1626" WATER MAIN OR FIRE MAIN
◇	1632" WATER MAIN OR FIRE MAIN
◇	1638" WATER MAIN OR FIRE MAIN
◇	1644" WATER MAIN OR FIRE MAIN
◇	1650" WATER MAIN OR FIRE MAIN
◇	1656" WATER MAIN OR FIRE MAIN
◇	1662" WATER MAIN OR FIRE MAIN
◇	1668" WATER MAIN OR FIRE MAIN
◇	1674" WATER MAIN OR FIRE MAIN
◇	1680" WATER MAIN OR FIRE MAIN
◇	1686" WATER MAIN OR FIRE MAIN
◇	1692" WATER MAIN OR FIRE MAIN
◇	1698" WATER MAIN OR FIRE MAIN
◇	1704" WATER MAIN OR FIRE MAIN
◇	1710" WATER MAIN OR FIRE MAIN
◇	1716" WATER MAIN OR FIRE MAIN
◇	1722" WATER MAIN OR FIRE MAIN
◇	1728" WATER MAIN OR FIRE MAIN
◇	1734" WATER MAIN OR FIRE MAIN
◇	1740" WATER MAIN OR FIRE MAIN
◇	1746" WATER MAIN OR FIRE MAIN
◇	1752" WATER MAIN OR FIRE MAIN
◇	1758" WATER MAIN OR FIRE MAIN
◇	1764" WATER MAIN OR FIRE MAIN
◇	1770" WATER MAIN OR FIRE MAIN
◇	1776" WATER MAIN OR FIRE MAIN
◇	1782" WATER MAIN OR FIRE MAIN
◇	1788" WATER MAIN OR FIRE MAIN
◇	1794" WATER MAIN OR FIRE MAIN
◇	1800" WATER MAIN OR FIRE MAIN
◇	1806" WATER MAIN OR FIRE MAIN
◇	1812" WATER MAIN OR FIRE MAIN
◇	1818" WATER MAIN OR FIRE MAIN
◇	1824" WATER MAIN OR FIRE MAIN
◇	1830" WATER MAIN OR FIRE MAIN
◇	1836" WATER MAIN OR FIRE MAIN
◇	1842" WATER MAIN OR FIRE MAIN
◇	1848" WATER MAIN OR FIRE MAIN
◇	1854" WATER MAIN OR FIRE MAIN
◇	1860" WATER MAIN OR FIRE MAIN
◇	1866" WATER MAIN OR FIRE MAIN
◇	1872" WATER MAIN OR FIRE MAIN
◇	1878" WATER MAIN OR FIRE MAIN
◇	1884" WATER MAIN OR FIRE MAIN
◇	1890" WATER MAIN OR FIRE MAIN
◇	1896" WATER MAIN OR FIRE MAIN
◇	1902" WATER MAIN OR FIRE MAIN
◇	1908" WATER MAIN OR FIRE MAIN
◇	1914" WATER MAIN OR FIRE MAIN
◇	1920" WATER MAIN OR FIRE MAIN
◇	1926" WATER MAIN OR FIRE MAIN
◇	1932" WATER MAIN OR FIRE MAIN
◇	1938" WATER MAIN OR FIRE MAIN
◇	1944" WATER MAIN OR FIRE MAIN
◇	1950" WATER MAIN OR FIRE MAIN
◇	1956" WATER MAIN OR FIRE MAIN
◇	1962" WATER MAIN OR FIRE MAIN
◇	1968" WATER MAIN OR FIRE MAIN
◇	1974" WATER MAIN OR FIRE MAIN
◇	1980" WATER MAIN OR FIRE MAIN
◇	1986" WATER MAIN OR FIRE MAIN
◇	1992" WATER MAIN OR FIRE MAIN
◇	1998" WATER MAIN OR FIRE MAIN
◇	2004" WATER MAIN OR FIRE MAIN
◇	2010" WATER MAIN OR FIRE MAIN
◇	2016" WATER MAIN OR FIRE MAIN
◇	2022" WATER MAIN OR FIRE MAIN
◇	2028" WATER MAIN OR FIRE MAIN
◇	2034" WATER MAIN OR FIRE MAIN
◇	2040" WATER MAIN OR FIRE MAIN
◇	2046" WATER MAIN OR FIRE MAIN
◇	2052" WATER MAIN OR FIRE MAIN
◇	2058" WATER MAIN OR FIRE MAIN
◇	2064" WATER MAIN OR FIRE MAIN
◇	2070" WATER MAIN OR FIRE MAIN
◇	2076" WATER MAIN OR FIRE MAIN
◇	2082" WATER MAIN OR FIRE MAIN
◇	2088" WATER MAIN OR FIRE MAIN
◇	2094" WATER MAIN OR FIRE MAIN
◇	2100" WATER MAIN OR FIRE MAIN
◇	2106" WATER MAIN OR FIRE MAIN



- UTILITY NOTES:**
- ALL FILL MATERIAL IS TO BE IN PLACE AND COMPACTED BEFORE INSTALLATION OF PROPOSED UTILITIES.
 - CONTRACTOR SHALL NOTIFY THE UTILITY AUTHORITIES INSPECTORS 72 HOURS BEFORE CONNECTING TO ANY EXISTING LINE.
 - CONTRACTOR SHALL MAINTAIN A MINIMUM OF 3'-6" COVER ON ALL WATERLINES AND 3'-0" ON ALL SANITARY SEWER LINES.
 - CONTRACTOR SHALL COORDINATE WITH BUILDING ARCHITECT AND TELEPHONE COMPANY FOR EXACT LOCATIONS OF TELEPHONE ENTRY TO THE BUILDING. CONTRACTOR SHALL BE RESPONSIBLE FOR ANY CONDUITS, PULL WIRES, TRENCHING, BACKFILL, ETC. REQUIRED BY TELEPHONE CO.
 - CONNECTION FROM THE METER TO SITE UTILITY LINES SHALL BE MADE BY BUILDING CONTRACTOR.
 - EXISTING UTILITIES SHALL BE VERIFIED IN FIELD PRIOR TO INSTALLATION OF ANY NEW LINES.
 - REFER TO INTERIOR MECHANICAL, ELECTRIC AND PLUMBING DRAWINGS FOR TIE-IN OF ALL UTILITIES.
 - THE CONTRACTOR IS SPECIFICALLY CAUTIONED THAT THE LOCATION AND/OR ELEVATION OF EXISTING UTILITIES AS SHOWN ON THESE PLANS IS BASED ON RECORDS OF THE VARIOUS UTILITY COMPANIES, AND WHERE POSSIBLE, MEASUREMENTS TAKEN IN THE FIELD. THE INFORMATION IS NOT TO BE RELIED ON AS BEING EXACT OR COMPLETE. THE CONTRACTOR MUST CALL THE APPROPRIATE UTILITY COMPANIES AT LEAST 72 HOURS BEFORE ANY EXCAVATION TO REQUEST EXACT FIELD LOCATION OF UTILITIES. IT SHALL BE THE RESPONSIBILITY OF THE CONTRACTOR TO LOCATE ALL EXISTING UTILITIES WHICH CONFLICT WITH THE PROPOSED IMPROVEMENTS SHOWN ON THE PLANS.
 - ALL NECESSARY INSPECTIONS AND/OR CERTIFICATIONS REQUIRED BY CODES AND/OR UTILITY SERVICE COMPANIES SHALL BE PERFORMED PRIOR TO ANNOUNCED BUILDING POSSESSION AND THE FINAL CONNECTION OF SERVICE.
 - CONTRACTOR SHALL COORDINATE WITH BUILDING ARCHITECT AND KANSAS GAS SERVICE FOR EXACT LOCATION OF GAS ENTRY. G.C. TO INCLUDE IN BID FOR CONTRACTOR ANY GAS PIPING, CONDUITS, TRENCHING, BACKFILLING, ETC. REQUIRED BY KANSAS GAS SERVICE.
 - CONTRACTOR SHALL COORDINATE WITH BUILDING ARCHITECT AND ELECTRIC COMPANY FOR EXACT LOCATION OF ELECTRIC ENTRY. G.C. SHALL INCLUDE FOR ANY CONDUITS, TRENCHING, BACKFILLING, CABLES, ETC. REQUIRED BY ELECTRIC COMPANY IN HIS/HER BID.
 - SEE MEP PLANS FOR GAS SERVICE SIZING.
 - ALL UTILITY SEWER TRENCH BACKFILL SHALL HAVE GRANULAR BACKFILL AND BE MECHANICALLY COMPACTED.
 - THE CONTRACTOR SHALL VERIFY THE LOCATION, CONDITION AND ELEVATION OF ALL PROPOSED SEWER CONNECTION POINTS PRIOR TO THE START OF CONSTRUCTION. ANY DISCREPANCIES THAT WOULD INTERFERE WITH THE PROPOSED SEWER DESIGN SHALL IMMEDIATELY BE BROUGHT TO THE ATTENTION OF THE ENGINEER.
 - THE EXISTING INLETS NOTED ARE TO BE INSPECTED BY CITY OF WICHITA AND A DETERMINATION MADE IF REPLACEMENT IS NEEDED. EXISTING TOP OF STRUCTURES AND ALL FLOWLINES OF STRUCTURES ARE TO BE REPLICATED PER PLANS IF REPLACEMENT IS REQUIRED. CONTRACTOR TO INCLUDE REMOVAL AND REPLACEMENT OF STRUCTURES IN HIS/HER BID.
 - ALL PERMIT FEES AND COSTS ASSOCIATED WITH BRINGING UTILITY, SEWER AND WATER SERVICES TO THE BUILDING SHALL BE THE RESPONSIBILITY OF THE CONTRACTOR. ALL FEES AND COSTS SHALL BE INCLUDED IN THE CONTRACTOR'S BID.
 - G.C. TO INCLUDE IN HIS BID COST TO BORE UNDER WEST 13TH STREET AND PROVIDE OPENING FOR CITY OF WICHITA WATER SERVICE TO MAKE TAP. G.C. IS ALSO TO PROVIDE TRENCH, BACKFILL AND GRADE SMOOTH FOR A COMPLETE WATER LINE INSTALLATION.
 - G.C. IS TO PROVIDE TRENCH, WIRE, AND CONDUIT FOR TELEPHONE AND ELECTRICAL SERVICES, BACKFILL AND GRADE SMOOTH FOR A COMPLETE TELEPHONE AND ELECTRIC INSTALLATION.
 - ALL LANDSCAPE ISLANDS AND GREEN SPACE IN THE RIGHT-OF-WAY SHALL BE IRRIGATED.
 - THE CONTRACTOR SHALL INCLUDE FOR TELEPHONE INSTALLATION COSTS BY THE LOCAL PHONE COMPANY IN HIS/HER BID.
 - THE CONTRACTOR SHALL INCLUDE THE COST ESTIMATE PROVIDED BY WESTAR ENERGY IN HIS/HER BID FOR THE RELOCATION OF ANY OVERHEAD ELECTRIC OR GUY WIRES.

THE CONTRACTOR SHALL VISIT THE SITE PRIOR TO SUBMITTAL OF HIS/HER BIDS TO CONFIRM THAT THE SITE CONDITIONS ARE AS SHOWN ON THESE PLANS. ANY CONDITION THAT IS DIFFERENT THAN WHAT IS SHOWN ON THESE PLANS SHALL BE BROUGHT TO THE ATTENTION OF THE ENGINEER PRIOR TO SUBMITTAL OF BIDS.

107 PPD (607861)

NORTHERN 13,225-RIGHT CHAMFER DRIVE-THRU

STORE NUMBER: 10077

SWC 13TH AND MAIZE WICHITA, KS

PROJECT TYPE: NEW CONSTRUCTION

DEAL TYPE: FEE FOR SERVICE

CS PROJECT NUMBER: 64724

ARCHITECT OF RECORD

NORR

ARCHITECTS ENGINEERS PLANNERS

CONSULTANT:

PREMIER CIVIL ENGINEERING

308 TCW Court
Lake Saint Louis, MO 63367
Phone: (314) 925-7444
Fax: (314) 925-7457

DEVELOPER:

VELMEIR COMPANIES

ENGINEERS AUTHENTICATION

STEVEN D. MARSTON
LICENSED PROFESSIONAL ENGINEER
KANSAS
No. 10002
2002

REVISIONS:

NO.	DATE	DESCRIPTION
1	8/13/12	REVISED PER CITY COMMENTS, REVS. TO STORM DETENTION HOPE PIPES AT CS-102

DRAWING BY: J.WURM
DATE: 6-1-2012
JOB NUMBER: 113201
TITLE: PRIVATE PROJECT STORMWATER PLAN
SHEET NUMBER: SHEET C-3D
COMMENTS:

NOTE
Underground utilities and structures have been plotted from available information and therefore, their location must be considered approximate only. It is the responsibility of the individual contractors to notify the utility companies before actual construction.

I:\STORAGE\Server\CIVIL 3D PROJECTS\113201\DWG\CONSTRUCTION DRAWINGS\SWC 13TH AND MAIZE DES. CURRENT 7-10-12.dwg

TABLE OF PROPOSED STRUCTURES

Structure Number	Northing	Easting	Rim Elevation
MH 201	19880.53	19643.395	1348.34
MH 202	19896.71	19644.183	1347.87
MH 203	19923.5	19644.836	1348.35
ZIG 204	19926.48	19599.854	1346.96
ZIG 205	19925.54	19599.508	1346.2
CS10203A	19885.34	19635.363	1347.87
ZIG401	19924.48	19734.738	1346.99
MH402	19922.6	19818.314	1348.35
ZIG403	19776.98	19924.395	1345.4
ZIG301	19774.42	19635.509	1346.92
ZIG302	19707.97	19668.639	1346.96
MH100	19950.87	19358.285	1347.3
LS101	19933.94	19642.771	1348.5
CS102	19933.7	19653.431	1348.5

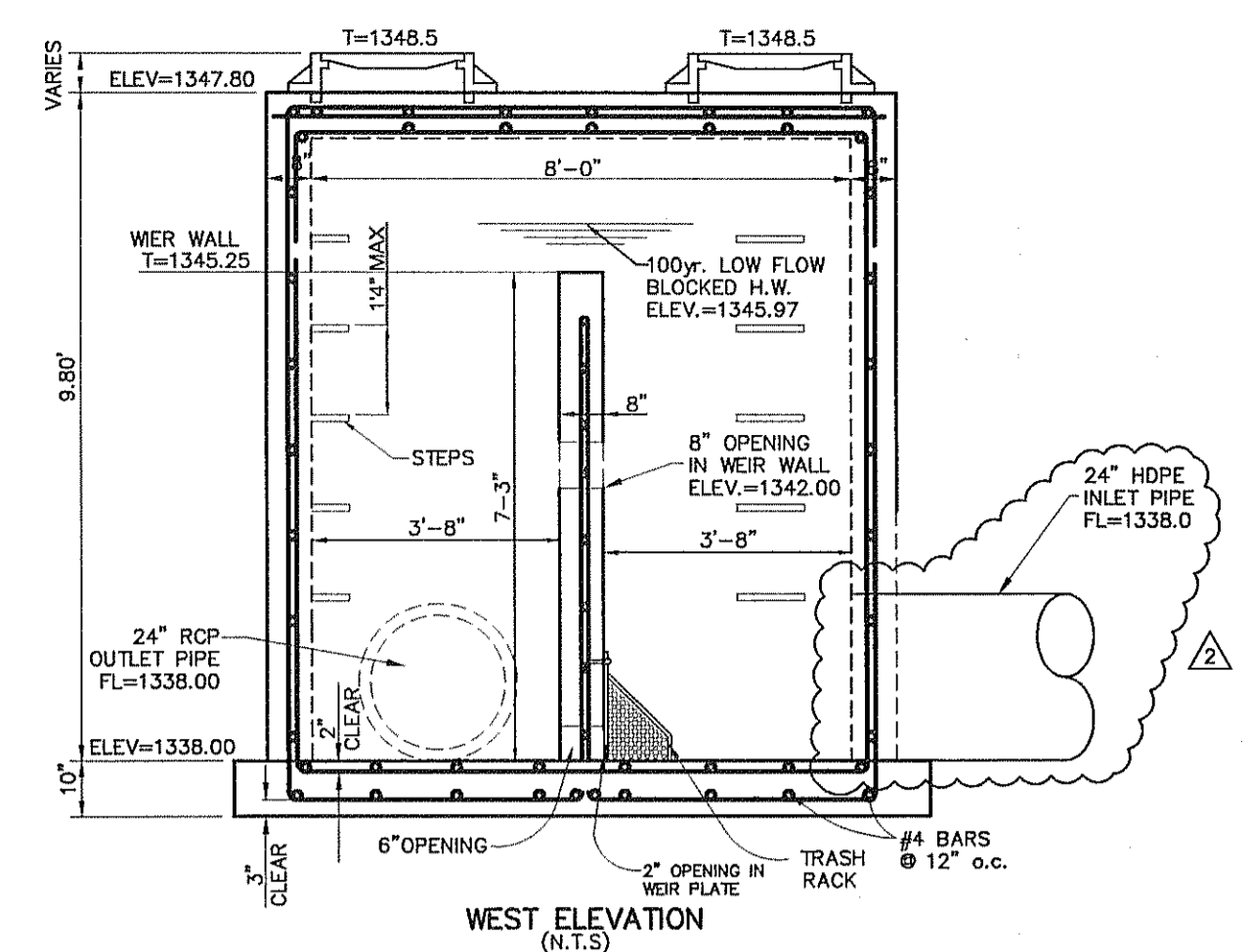
Owner:
Hunting Park Holding LLC 4041 N.
Macarthur Blvd. Suite 350
Newport Beach Ca. 92660

Lot 2
Owner:
Thirteenth & Maize LLC
3141 N. Maize Road
Wichita Ks. 67205

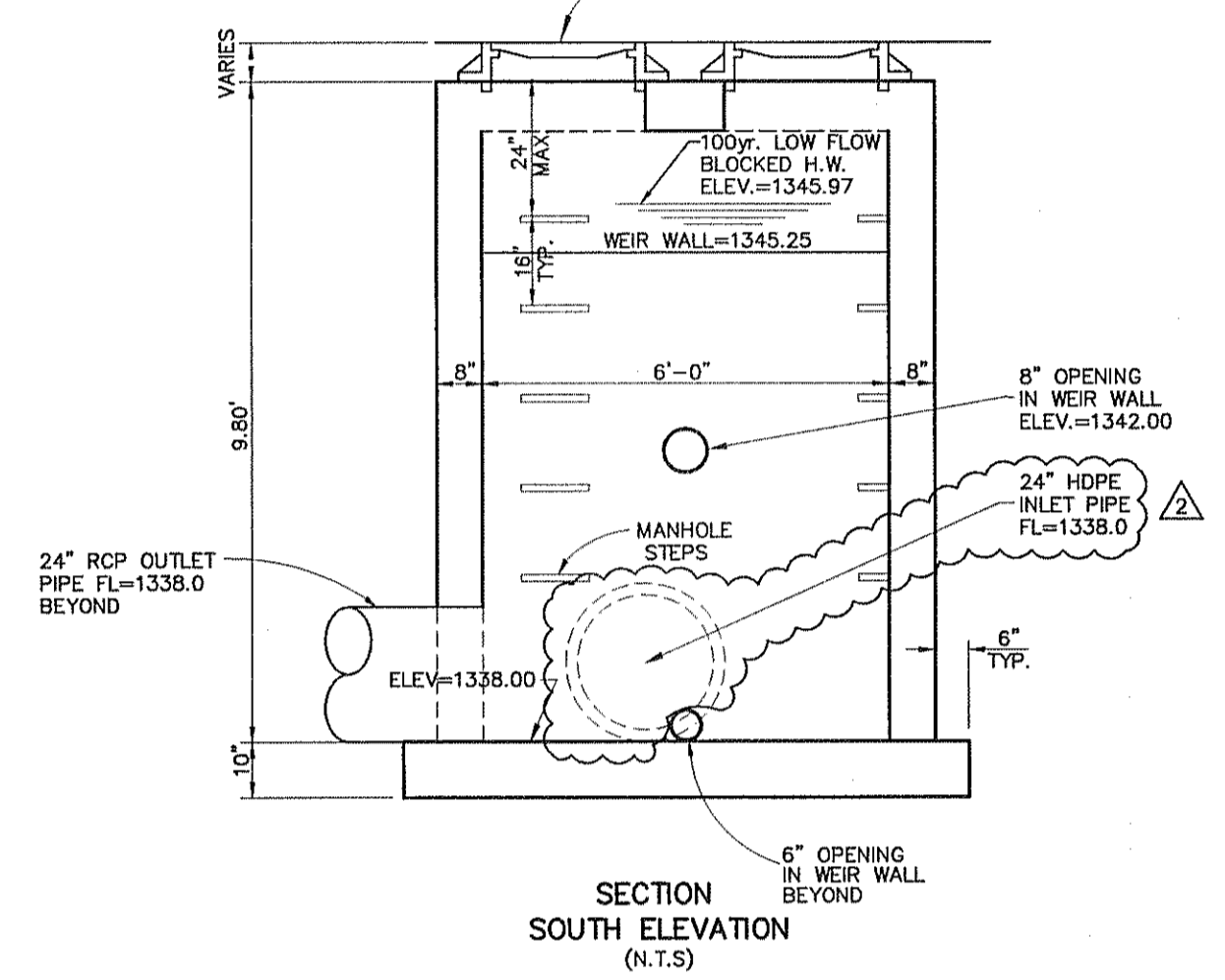
Lot 3
Owner:
Boro at 13th & Maize LLC
P.O. Box 498
Jonesboro Ar. 72403

Lot 4
Owner:
Thirteenth & Maize LLC
3141 N. Maize Road
Wichita Ks. 67205

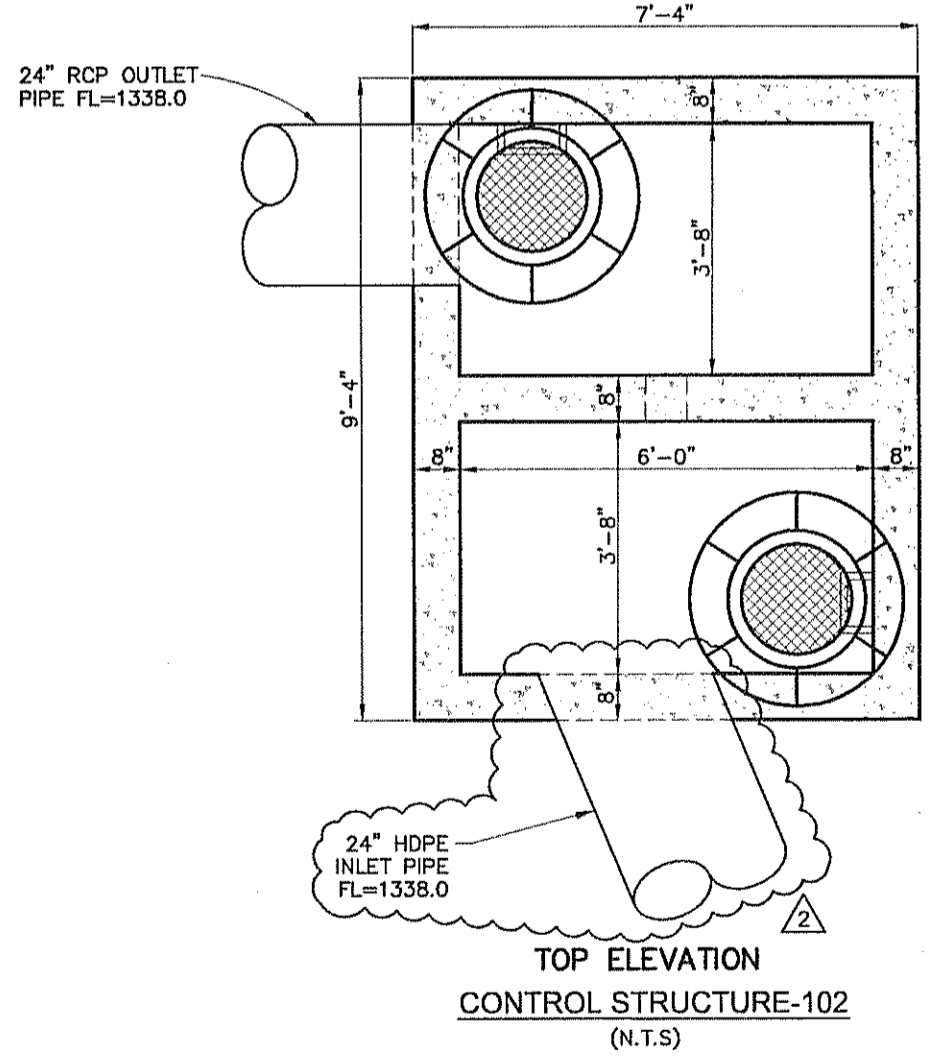
I:\STORAGE\1\Server\CIVIL_3D\PROJECTS\113201\DWG\CONSTRUCTION DRAWINGS\SWC_13TH AND MAIZE DETAILS.dwg



- GENERAL NOTES:**
- ALL CONCRETE SHALL BE LOW SLUMP CLASS "A" CONCRETE.
 - ALL REINFORCING STEEL SHALL BE OF A.S.T.M. A615, GRADE 60.
 - ALL MANHOLE CASTINGS SHALL BE STANDARD CITY OF WICHITA CAST IRON MANHOLE FRAME.



SHOP DRAWING REVIEW NOTE:
ENGINEER APPROVED, SIGNED AND SEALED SHOP DRAWINGS MUST BE SUBMITTED TO CITY ENGINEER AND DESIGN ENGINEER PRIOR TO CONSTRUCTION OF THIS STRUCTURE.

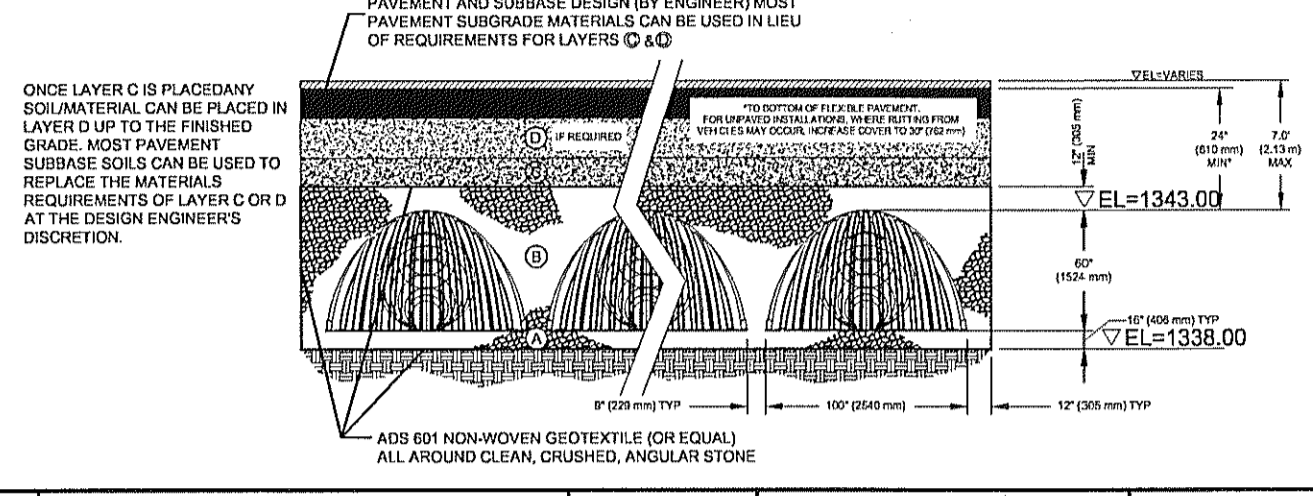


ACCEPTABLE FILL MATERIALS: STORMTECH MC-4500 CHAMBER SYSTEMS

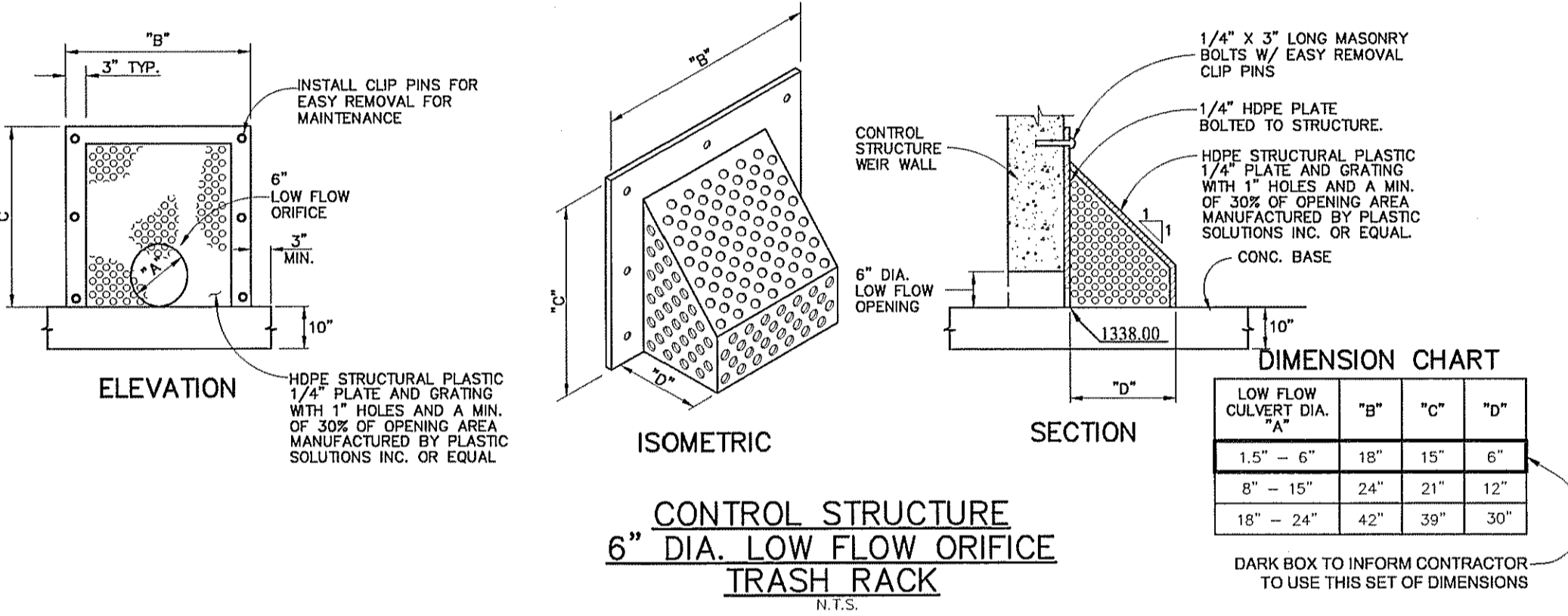
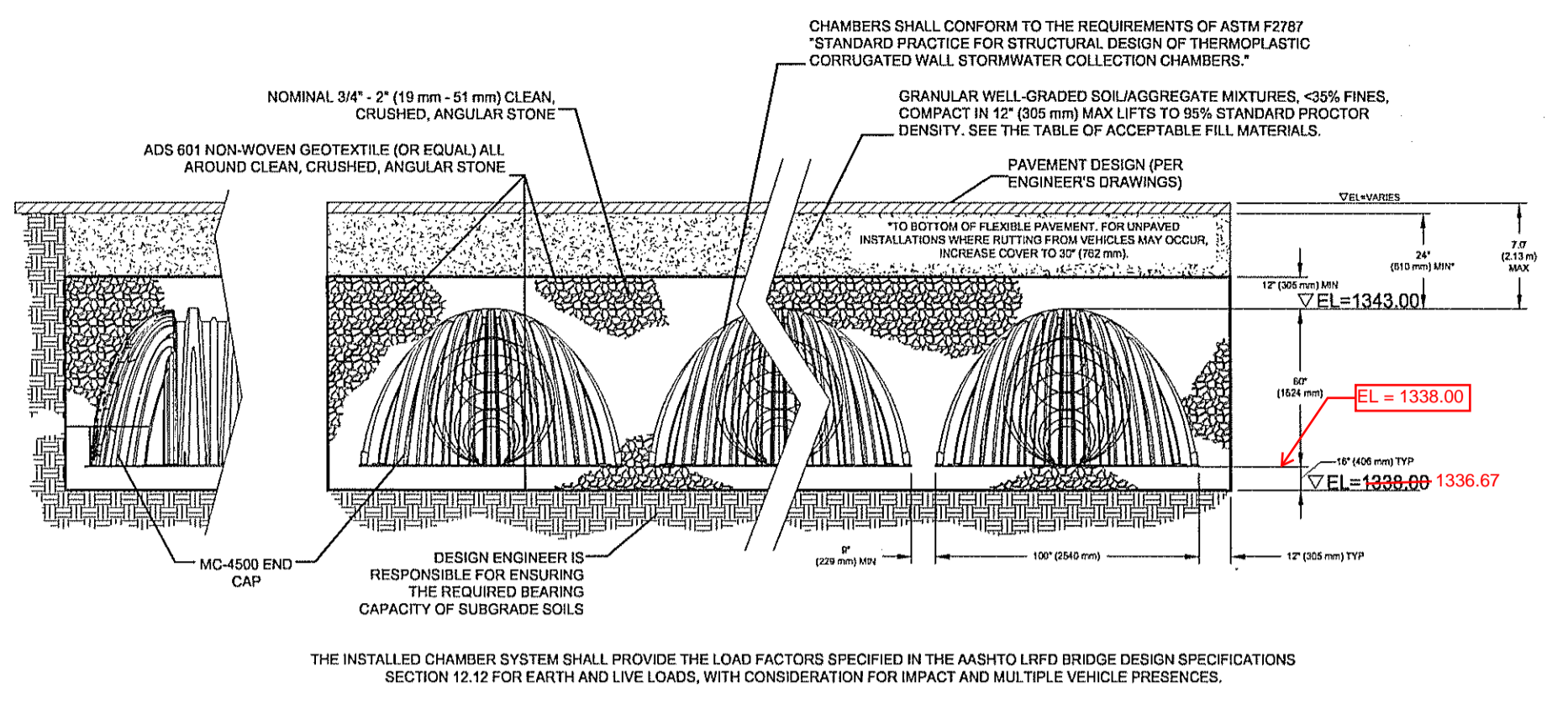
MATERIAL LOCATION	DESCRIPTION	AASHTO M43 DESIGNATION ¹	COMPACTION/DENSITY REQUIREMENT
(D)	FILL MATERIAL FOR LAYER 'D' STARTS FROM THE TOP OF THE 'C' LAYER TO THE BOTTOM OF FLEXIBLE PAVEMENT OR UNPAVED FINISHED GRADE ABOVE. NOTE THAT PAVEMENT SUBBASE MAY BE PART OF THE 'D' LAYER.	N/A	PREPARE PER ENGINEER'S PLANS. PAVED INSTALLATIONS MAY HAVE STRINGENT MATERIAL AND PREPARATION REQUIREMENTS.
(C)	FILL MATERIAL FOR LAYER 'C' STARTS FROM THE TOP OF THE EMBEDMENT STONE (B LAYER) TO 24" (610 mm) ABOVE THE TOP OF THE CHAMBER. NOTE THAT PAVEMENT SUBBASE MAY BE A PART OF THIS LAYER.	3, 357, 4, 467, 5, 56, 57, 6, 67, 68, 7, 78, 8, 89, 9, 10	BEGIN COMPACTION AFTER 24" (610 mm) OF MATERIAL OVER THE CHAMBERS IS REACHED. COMPACTION ADDITIONAL LAYERS IN 12" (305 mm) MAX LIFTS TO A MIN. 95% STANDARD PROCTOR DENSITY.
(B)	EMBEDMENT STONE SURROUNDING THE CHAMBERS FROM THE FOUNDATION STONE TO THE 'C' LAYER ABOVE.	3, 357, 4, 467, 5, 56, 57	NO COMPACTION REQUIRED.
(A)	FOUNDATION STONE BELOW CHAMBERS FROM THE SUBGRADE UP TO THE FOOT (BOTTOM) OF THE CHAMBER.	3, 35, 4, 467, 5, 56, 67	PLATE COMPACT OR ROLL TO ACHIEVE A 95% STANDARD PROCTOR DENSITY.

PLEASE NOTE:

- THE LISTED AASHTO DESIGNATIONS ARE FOR GRADATIONS ONLY. THE STONE MUST ALSO BE CLEAN, CRUSHED, ANGULAR. FOR EXAMPLE, A SPECIFICATION FOR #4 STONE WOULD STATE: "CLEAN, CRUSHED, ANGULAR NO. 4 (AASHTO M43) STONE".
- AS AN ALTERNATE TO PROCTOR TESTING AND FIELD DENSITY MEASUREMENTS ON OPEN GRADED STONE, STORMTECH COMPACTION REQUIREMENTS ARE MET FOR 'A' LOCATION MATERIALS WHEN PLACED AND COMPACTED IN 9" (229 mm) (MAX) LIFTS USING TWO FULL COVERAGES WITH AN APPROPRIATE COMPACTOR.



ADS	THE DESIGN ENGINEER SHALL REVIEW THIS DRAWING PRIOR TO CONSTRUCTION. IF HE OR SHE HAS ANY QUESTIONS OR CONCERNS, HE OR SHE MUST CONTACT THE DESIGN ENGINEER PRIOR TO THE START OF CONSTRUCTION. THE DESIGN ENGINEER SHALL BE RESPONSIBLE FOR THE DESIGN AND CONSTRUCTION OF THIS STRUCTURE.	Stormtech	MC-4500 ACCEPTABLE FILL MATERIALS	ADS	THE DESIGN ENGINEER SHALL REVIEW THIS DRAWING PRIOR TO CONSTRUCTION. IF HE OR SHE HAS ANY QUESTIONS OR CONCERNS, HE OR SHE MUST CONTACT THE DESIGN ENGINEER PRIOR TO THE START OF CONSTRUCTION. THE DESIGN ENGINEER SHALL BE RESPONSIBLE FOR THE DESIGN AND CONSTRUCTION OF THIS STRUCTURE.
			SCALE: NTS DATE: 12-29-10 DRAWN BY: JM CHECKED: KAM		



DIMENSION CHART

LOW FLOW CULVERT DIA.	"B"	"C"	"D"
1.5" - 6"	18"	15"	6"
8" - 15"	24"	21"	12"
18" - 24"	42"	39"	30"

DARK BOX TO INFORM CONTRACTOR - TO USE THIS SET OF DIMENSIONS

STORMTECH GENERAL NOTES

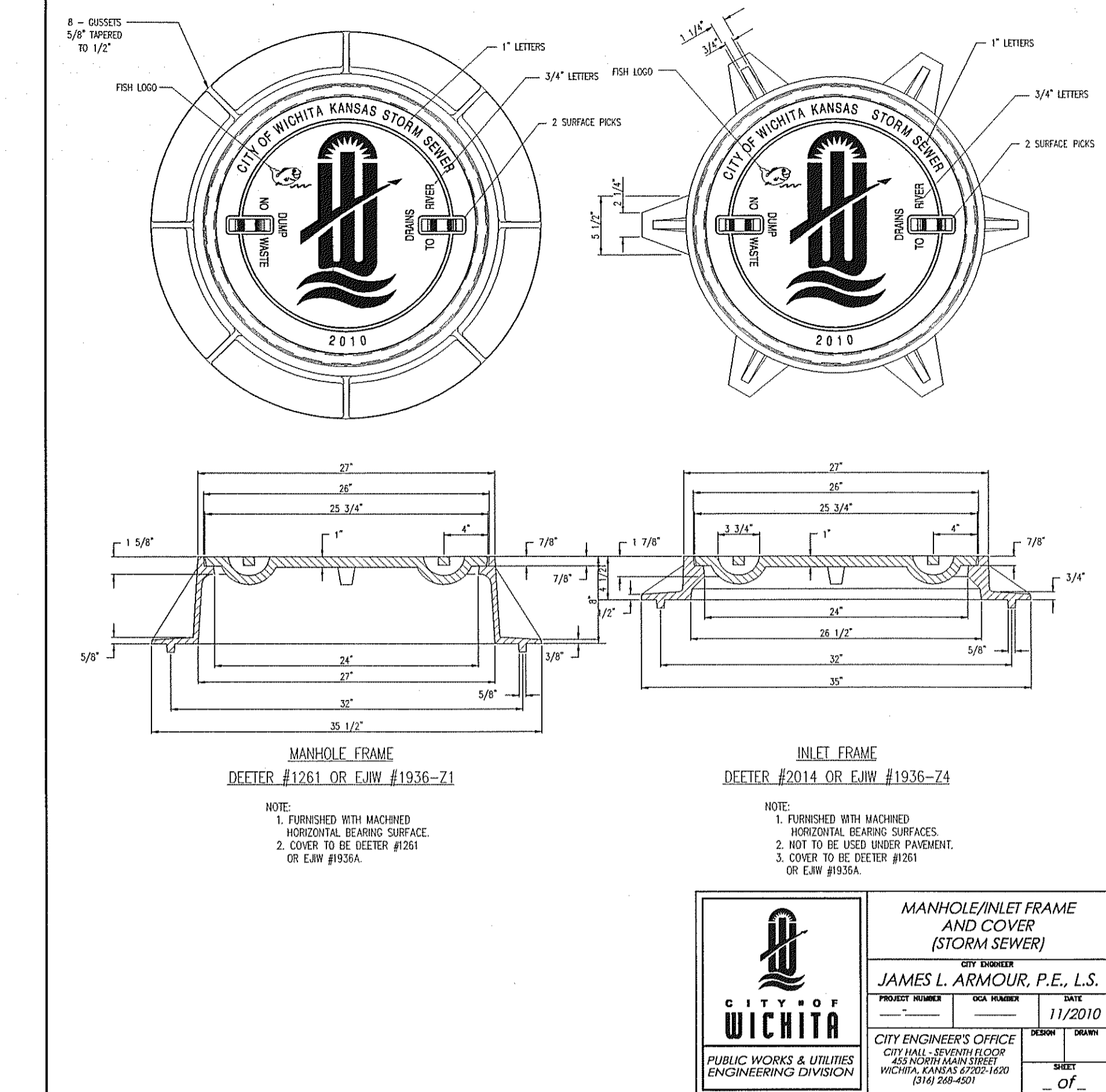
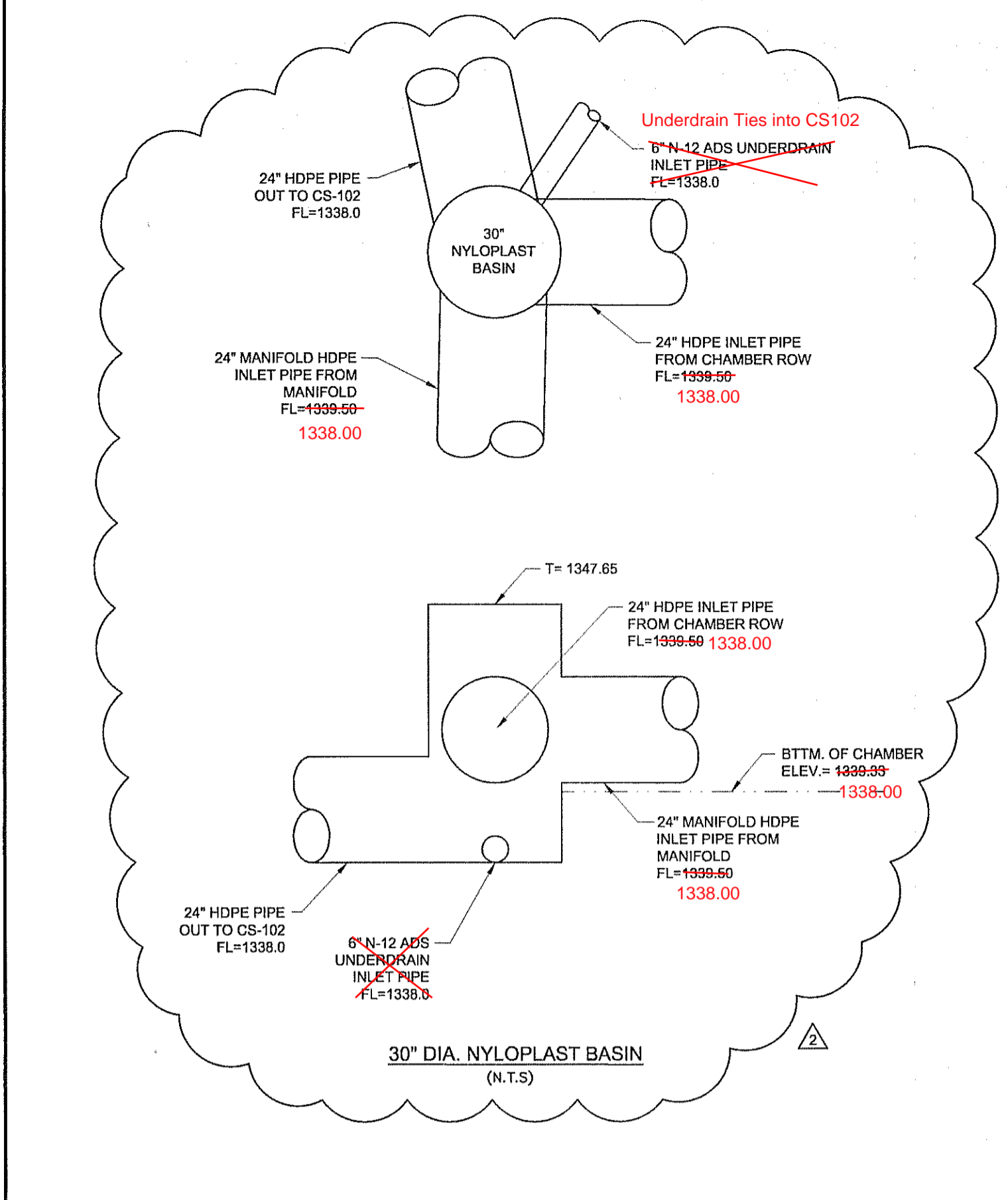
- STORMTECH ("STORMTECH") REQUIRES INSTALLING CONTRACTORS TO USE AND UNDERSTAND STORMTECH'S LATEST MC-4500 INSTALLATION INSTRUCTIONS PRIOR TO BEGINNING SYSTEM INSTALLATION.
- STORMTECH OFFERS INSTALLATION CONSULTATIONS TO INSTALLING CONTRACTORS. CONTACT OUR TECHNICAL SERVICE DEPARTMENT OR LOCAL STORMTECH REPRESENTATIVE AT LEAST 30 DAYS PRIOR TO SYSTEM INSTALLATION TO ARRANGE A PRE-INSTALLATION CONSULTATION. OUR REPRESENTATIVES CAN THEN ANSWER QUESTIONS OR ADDRESS COMMENTS ON THE STORMTECH CHAMBER SYSTEM AND INFORM THE INSTALLING CONTRACTOR OF THE MINIMUM INSTALLATION REQUIREMENTS BEFORE BEGINNING THE SYSTEMS CONSTRUCTION. CALL 866-529-8188 TO SPEAK TO A TECHNICAL SERVICE REPRESENTATIVE OR VISIT WWW.STORMTECH.COM TO RECEIVE A COPY OF OUR INSTALLATION INSTRUCTIONS.
- STORMTECH REQUIREMENTS FOR MC-4500 SYSTEMS WITH PAVEMENT DESIGN (ASPHALT, CONCRETE PAVERS, ETC.) MINIMUM COVER IS 24" (610 mm) NOT INCLUDING PAVEMENT. MAXIMUM COVER IS 7'0" (2.13 m) INCLUDING PAVEMENT. FOR INSTALLATIONS THAT DO NOT INCLUDE PAVEMENT, WHERE RUTTING FROM VEHICLES MAY OCCUR, MINIMUM REQUIRED COVER IS 30" (762 mm). MAXIMUM COVER IS 7'0" (2.13 m).
- THE CONTRACTOR MUST REPORT ANY DISCREPANCIES WITH THE BEARING CAPACITY OF THE CHAMBER FOUNDATION MATERIALS TO THE DESIGN ENGINEER.
- ADS 601 (OR EQUAL) NON-WOVEN GEOTEXTILE (FIBER FABRIC) MUST BE USED AS INDICATED IN THE PROJECT PLANS.
- STONE PLACEMENT BETWEEN CHAMBERS ROWS AND AROUND PERIMETER MUST FOLLOW INSTRUCTIONS AS INDICATED IN THE MOST CURRENT VERSION OF STORMTECH MC-4500 INSTALLATION INSTRUCTIONS.
- BACKFILL OVER THE CHAMBERS MUST FOLLOW REQUIREMENTS AS INDICATED IN THE MOST CURRENT VERSION OF STORMTECH MC-4500 INSTALLATION INSTRUCTIONS.
- THE CONTRACTOR MUST REFER TO STORMTECH MC-4500 INSTALLATION INSTRUCTIONS FOR A TABLE OF ACCEPTABLE VEHICLE LOADS AT VARIOUS DEPTHS OF COVER. THIS INFORMATION IS ALSO AVAILABLE ON THE STORMTECH WEBSITE: WWW.STORMTECH.COM. THE CONTRACTOR IS RESPONSIBLE FOR PREVENTING VEHICLES THAT EXCEED STORMTECH REQUIREMENTS FROM TRAVELING ACROSS OR PARKING OVER THE STORMWATER SYSTEM. TEMPORARY FENCING, WARNING TAPE AND APPROPRIATELY LOCATED SIGNS ARE COMMONLY USED TO PREVENT UNAUTHORIZED VEHICLES FROM ENTERING SENSITIVE CONSTRUCTION AREAS.
- THE CONTRACTOR MUST APPLY EROSION AND SEDIMENT CONTROL MEASURES TO PROTECT THE STORMWATER SYSTEM DURING ALL PHASES OF SITE CONSTRUCTION PER LOCAL CODES AND DESIGN ENGINEER'S SPECIFICATIONS.
- STORMTECH PRODUCT WARRANTY IS LIMITED. CONTACT STORMTECH FOR WARRANTY INFORMATION.

MC-4500 STORMWATER CHAMBER SPECIFICATIONS

- CHAMBERS SHALL BE STORMTECH MC-4500 OR APPROVED EQUAL.
- CHAMBERS SHALL BE MADE FROM VIRGIN, IMPACT-MODIFIED POLYPROPYLENE COPOLYMERS.
- CHAMBER ROWS SHALL PROVIDE CONTINUOUS, UNOBSTRUCTED INTERNAL SPACE WITH NO INTERNAL SUPPORT PANELS THAT WOULD IMPEDE FLOW OR LIMIT ACCESS FOR INSPECTION.
- THE STRUCTURAL DESIGN OF THE CHAMBERS, THE STRUCTURAL BACKFILL AND THE INSTALLATION REQUIREMENTS SHALL ENSURE THAT THE LOAD FACTORS SPECIFIED IN THE AASHTO LRFD BRIDGE DESIGN SPECIFICATIONS, SECTION 12.12 ARE MET FOR: 1) LONG-DURATION DEAD LOADS AND 2) SHORT-DURATION LIVE LOADS, BASED ON THE AASHTO DESIGN TRUCK WITH CONSIDERATION FOR IMPACT AND MULTIPLE VEHICLE PRESENCES.
- CHAMBERS SHALL CONFORM TO THE REQUIREMENTS OF ASTM F 2787, "STANDARD PRACTICE FOR STRUCTURAL DESIGN OF THERMOPLASTIC CORRUGATED WALL STORMWATER COLLECTION CHAMBERS".
- ONLY CHAMBERS THAT ARE APPROVED BY THE ENGINEER WILL BE ALLOWED. THE CONTRACTOR SHALL SUBMIT (3 SETS) OF THE FOLLOWING TO THE ENGINEER FOR APPROVAL BEFORE DELIVERING CHAMBERS TO THE PROJECT SITE:
 - A STRUCTURAL EVALUATION BY A REGISTERED STRUCTURAL ENGINEER THAT DEMONSTRATES THAT THE LOAD FACTORS SPECIFIED IN THE AASHTO LRFD BRIDGE DESIGN SPECIFICATIONS, SECTION 12.12 ARE MET.
 - A STRUCTURAL CROSS SECTION DETAIL ON WHICH THE STRUCTURAL CROSS SECTION IS BASED.
 - THE INSTALLATION OF CHAMBERS SHALL BE IN ACCORDANCE WITH THE MANUFACTURER'S LATEST INSTALLATION INSTRUCTIONS.

PART #	SIZE (BY H x INSTALLED LENGTH)	CHAMBER STORAGE	NOMINAL WEIGHT
MC4500PE08A	8" x 15"	106.5 (3.01 m ³)	106.5 (34.4 kg)
MC4500PE15A	15" x 24"	182.6 (5.16 m ³)	182.6 (54.4 kg)
MC4500PE18A	18" x 24"	228.9 (6.48 m ³)	228.9 (64.8 kg)
MC4500PE24A	24" x 30"	353.7 (10.01 m ³)	353.7 (100.1 kg)
MC4500PE30A	30" x 36"	509.1 (14.37 m ³)	509.1 (143.7 kg)
MC4500PE36A	36" x 42"	685.8 (19.27 m ³)	685.8 (192.7 kg)
MC4500PE42A	42" x 48"	883.8 (24.81 m ³)	883.8 (248.1 kg)
MC4500PE48A	48" x 54"	1103.1 (31.01 m ³)	1103.1 (310.1 kg)
MC4500PE54A	54" x 60"	1343.7 (37.91 m ³)	1343.7 (379.1 kg)
MC4500PE60A	60" x 66"	1605.6 (45.11 m ³)	1605.6 (451.1 kg)
MC4500PE66A	66" x 72"	1888.8 (52.91 m ³)	1888.8 (529.1 kg)
MC4500PE72A	72" x 78"	2193.3 (61.31 m ³)	2193.3 (613.1 kg)
MC4500PE78A	78" x 84"	2519.1 (70.51 m ³)	2519.1 (705.1 kg)
MC4500PE84A	84" x 90"	2866.1 (80.51 m ³)	2866.1 (805.1 kg)
MC4500PE90A	90" x 96"	3234.3 (91.11 m ³)	3234.3 (911.1 kg)
MC4500PE96A	96" x 102"	3624.6 (102.31 m ³)	3624.6 (1023.1 kg)
MC4500PE102A	102" x 108"	4037.1 (114.11 m ³)	4037.1 (1141.1 kg)
MC4500PE108A	108" x 114"	4471.8 (126.51 m ³)	4471.8 (1265.1 kg)
MC4500PE114A	114" x 120"	4928.7 (139.51 m ³)	4928.7 (1395.1 kg)
MC4500PE120A	120" x 126"	5407.8 (153.11 m ³)	5407.8 (1531.1 kg)
MC4500PE126A	126" x 132"	5909.1 (167.31 m ³)	5909.1 (1673.1 kg)
MC4500PE132A	132" x 138"	6432.6 (182.11 m ³)	6432.6 (1821.1 kg)
MC4500PE138A	138" x 144"	6978.3 (197.51 m ³)	6978.3 (1975.1 kg)
MC4500PE144A	144" x 150"	7546.2 (213.51 m ³)	7546.2 (2135.1 kg)
MC4500PE150A	150" x 156"	8137.3 (230.11 m ³)	8137.3 (2301.1 kg)
MC4500PE156A	156" x 162"	8751.6 (247.31 m ³)	8751.6 (2473.1 kg)
MC4500PE162A	162" x 168"	9389.1 (265.11 m ³)	9389.1 (2651.1 kg)
MC4500PE168A	168" x 174"	10059.8 (283.51 m ³)	10059.8 (2835.1 kg)
MC4500PE174A	174" x 180"	10763.7 (302.51 m ³)	10763.7 (3025.1 kg)
MC4500PE180A	180" x 186"	11500.8 (322.11 m ³)	11500.8 (3221.1 kg)
MC4500PE186A	186" x 192"	12271.1 (342.31 m ³)	12271.1 (3423.1 kg)
MC4500PE192A	192" x 198"	13084.6 (363.11 m ³)	13084.6 (3631.1 kg)
MC4500PE198A	198" x 204"	13941.3 (384.51 m ³)	13941.3 (3845.1 kg)
MC4500PE204A	204" x 210"	14841.2 (406.51 m ³)	14841.2 (4065.1 kg)
MC4500PE210A	210" x 216"	15784.3 (429.11 m ³)	15784.3 (4291.1 kg)
MC4500PE216A	216" x 222"	16770.6 (452.31 m ³)	16770.6 (4523.1 kg)
MC4500PE222A	222" x 228"	17799.1 (476.11 m ³)	17799.1 (4761.1 kg)
MC4500PE228A	228" x 234"	18869.8 (500.51 m ³)	18869.8 (5005.1 kg)
MC4500PE234A	234" x 240"	19982.7 (525.51 m ³)	19982.7 (5255.1 kg)
MC4500PE240A	240" x 246"	21137.8 (551.11 m ³)	21137.8 (5511.1 kg)
MC4500PE246A	246" x 252"	22335.1 (577.31 m ³)	22335.1 (5773.1 kg)
MC4500PE252A	252" x 258"	23574.6 (604.11 m ³)	23574.6 (6041.1 kg)
MC4500PE258A	258" x 264"	24856.3 (631.51 m ³)	24856.3 (6315.1 kg)
MC4500PE264A	264" x 270"	26189.2 (659.51 m ³)	26189.2 (6595.1 kg)
MC4500PE270A	270" x 276"	27563.3 (688.11 m ³)	27563.3 (6881.1 kg)
MC4500PE276A	276" x 282"	28978.6 (717.31 m ³)	28978.6 (7173.1 kg)
MC4500PE282A	282" x 288"	30435.1 (747.11 m ³)	30435.1 (7471.1 kg)
MC4500PE288A	288" x 294"	31932.8 (777.51 m ³)	31932.8 (7775.1 kg)
MC4500PE294A	294" x 300"	33471.7 (808.51 m ³)	33471.7 (8085.1 kg)
MC4500PE300A	300" x 306"	35051.8 (840.11 m ³)	35051.8 (8401.1 kg)
MC4500PE306A	306" x 312"	36673.1 (872.31 m ³)	36673.1 (8723.1 kg)
MC4500PE312A	312" x 318"	38335.6 (905.11 m ³)	38335.6 (9051.1 kg)
MC4500PE318A	318" x 324"	40039.3 (938.51 m ³)	40039.3 (9385.1 kg)
MC4500PE324A	324" x 330"	41784.2 (972.51 m ³)	41784.2 (9725.1 kg)
MC4500PE330A	330" x 336"	43570.3 (1007.11 m ³)	43570.3 (10071.1 kg)
MC4500PE336A	336" x 342"	45397.6 (1042.31 m ³)	45397.6 (10423.1 kg)
MC4500PE342A	342" x 348"	47266.1 (1078.11 m ³)	47266.1 (10781.1 kg)
MC4500PE348A	348" x 354"	49176.8 (1114.51 m ³)	49176.8 (11145.1 kg)
MC4500PE354A	354" x 360"	51129.7 (1151.51 m ³)	51129.7 (11515.1 kg)
MC4500PE360A	360" x 366"	53124.8 (1189.11 m ³)	53124.8 (11891.1 kg)
MC4500PE366A	366" x 372"	55162.1 (1227.31 m ³)	55162.1 (12273.1 kg)
MC4500PE372A	372" x 378"	57241.6 (1266.11 m ³)	57241.6 (12661.1 kg)
MC4500PE378A	378" x 384"	59363.3 (1305.51 m ³)	59363.3 (13055.1 kg)
MC4500PE384A	384" x 390"	61527.2 (1345.51 m ³)	61527.2 (13455.1 kg)
MC4500PE390A	390" x 396"	63733.3 (1386.11 m ³)	63733.3 (13861.1 kg)
MC4500PE396A	396" x 402"	65981.6 (1427.31 m ³)	65981.6 (14273.1 kg)
MC4500PE402A	402" x 408"	68272.1 (1469.11 m ³)	68272.1 (14691.1 kg)
MC4500PE408A	408" x 414"	70604.8 (1511.51 m ³)	70604.8 (15115.1 kg)
MC4500PE414A	414" x 420"	72979.7 (1554.51 m ³)	72979.7 (15545.1 kg)
MC4500PE420A	420" x 426"	75396.8 (1598.11 m ³)	75396.8 (15981.1 kg)
MC4500PE426A	426" x 432"	77856.1 (1642.31 m ³)	77856.1 (16423.1 kg)
MC4500PE432A	432" x 438"	80357.6 (1687.11 m ³)	80357.6 (16871.1 kg)
MC4500PE438A	438" x 444"	82900.3 (1732.31 m ³)	82900.3 (17323.1 kg)
MC4500PE444A	444" x 450"	85484.2 (1778.11 m ³)	85484.2 (17781.1 kg)
MC4500PE450A	450" x 456"	88109.3 (1824.51 m ³)	88109.3 (18245.1 kg)
MC4500PE456A	456" x 462"	90775.6 (1871.51 m ³)	90775.6 (18715.1 kg)
MC4500PE462A	462" x 468"	93483.1 (1919.11 m ³)	93483.1 (19191.1 kg)
MC4500PE468A	468" x 474"	96231.8 (1967.31 m ³)	96231.8 (19673.1 kg)
MC4500PE474A	474" x 480"	99021.7 (1996.11 m ³)	99021.7 (19961.1 kg)
MC4500PE480A	480" x 486"	101852.8 (2045.51 m ³)	101852.8 (20455.1 kg)
MC4500PE486A	486" x 492"	104725.1 (2095.51 m ³)	104725.1 (20955.1 kg)
MC4500PE492A	492" x 498"	107638.6 (2146.11 m ³)	107638.6 (21461.1 kg)
MC4500PE498A	498" x 504"	110593.3 (2197.31 m ³)	110593.3 (21973.1 kg)
MC4500PE504A	504" x 510"	113589.2 (2249.11 m ³)	113589.2 (22491.1 kg)
MC4500PE510A	510" x 516"	116626.3 (2301.51 m ³)	116626.3 (23015.1 kg)
MC4500PE516A	516" x 522"	119704.6 (2354.51 m ³)	119704.6 (23545.1 kg)
MC4500PE522A	522" x 528"	122824.1 (2408.11 m ³)	122824.1 (24081.1 kg)
MC4500PE528A	528" x 534"	125984.8 (2462.31 m ³)	125984.8 (24623.1 kg)
MC4500PE534A	534" x 540"	129186.7 (2517.11 m ³)	129186.7 (25171.1 kg)
MC4500PE540A	540" x 546"	132429.8 (2572.31 m ³)	132429.8 (25723.1 kg)
MC4500PE546A	546" x 552"	135714.1 (2628.11 m ³)	135714.1 (26281.1 kg)
MC4500PE552A	552" x 558"	139049.6 (2684.51 m ³)	139049.6 (26845.1 kg)
MC4500PE558A	558" x 564"	142436.3 (2741.51 m ³)	142436.3 (27415.1 kg)
MC4500PE564A	564" x 570"</		

I:\STORAGE\Server\CIVIL 3D PROJECTS\113201\DWG\CONSTRUCTION DRAWINGS\3WC 13TH AND MAIZE DETAILS.dwg

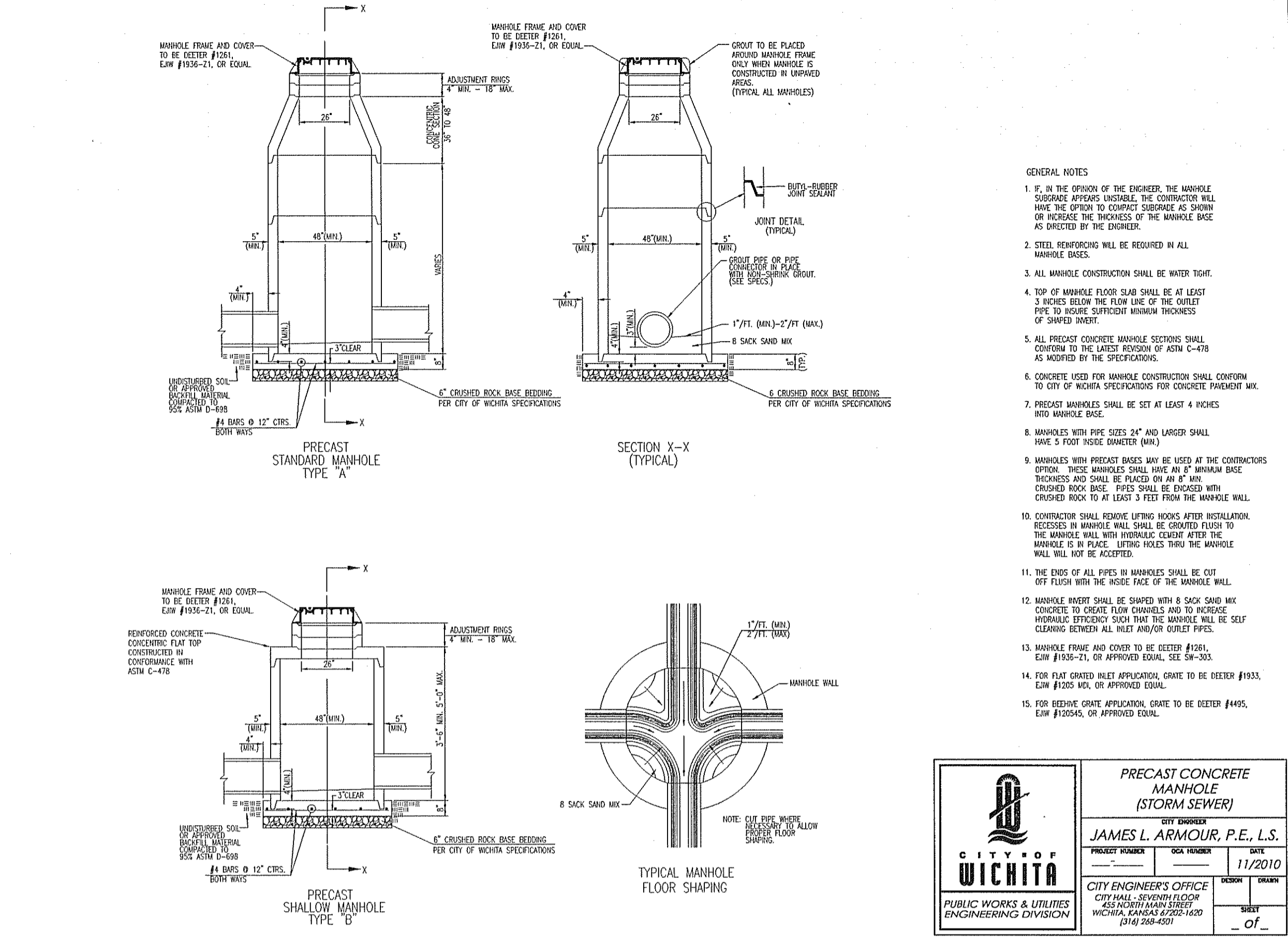


CITY OF WICHITA
PUBLIC WORKS & UTILITIES ENGINEERING DIVISION

MANHOLE/INLET FRAME AND COVER (STORM SEWER)

JAMES L. ARMOUR, P.E., L.S.

PROJECT NUMBER: 064724
SHEET: 11/2010
DRAWN: []
CHECKED: []
DATE: 11/2010

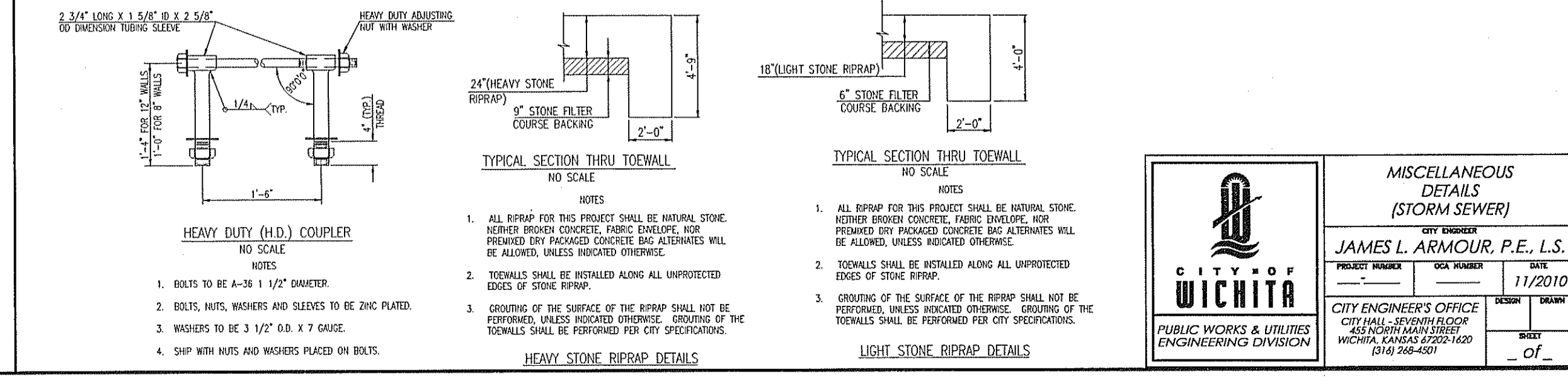
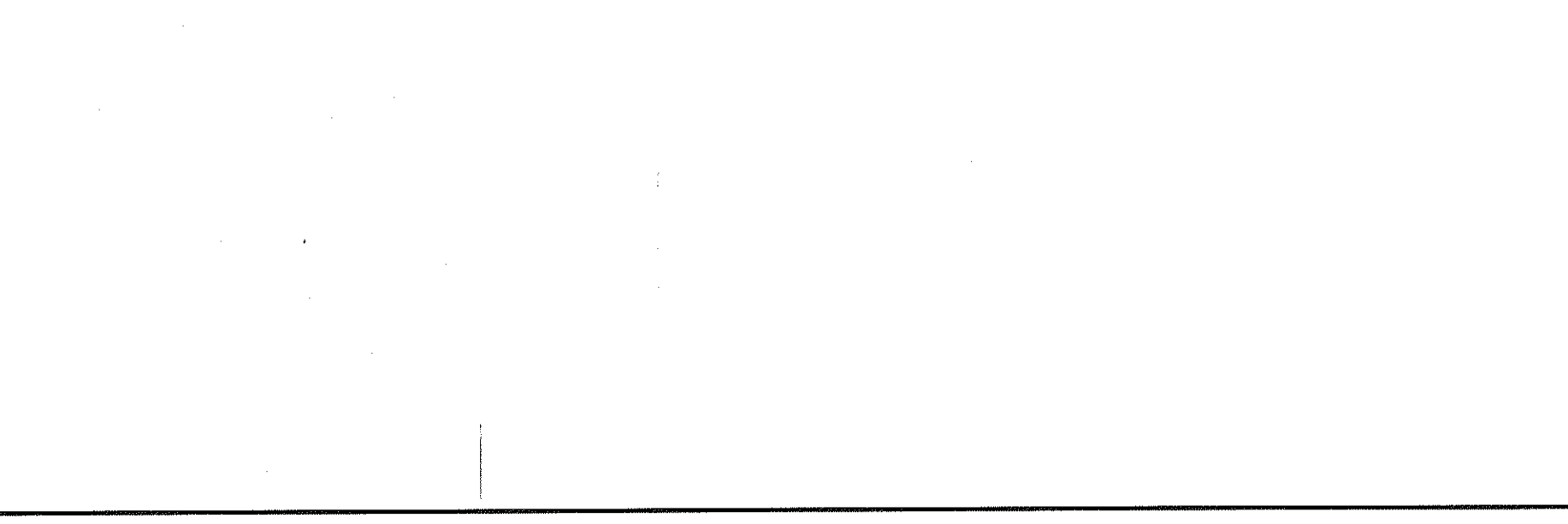
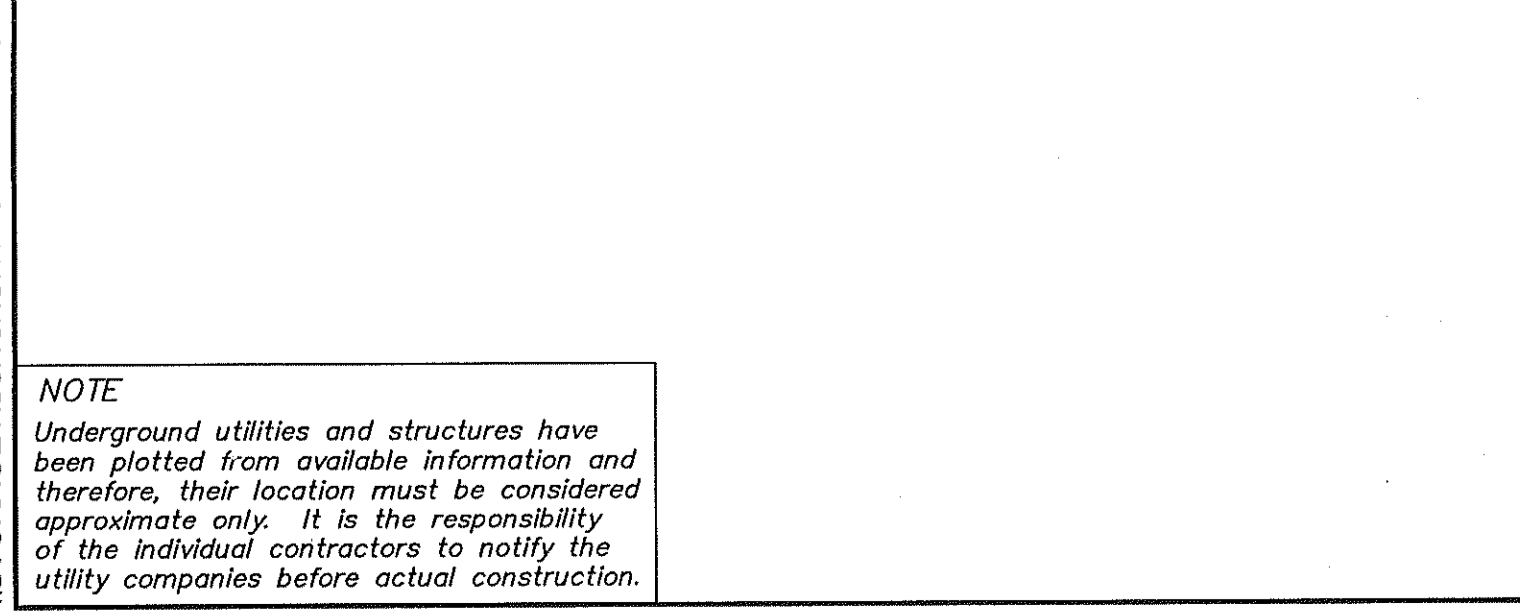
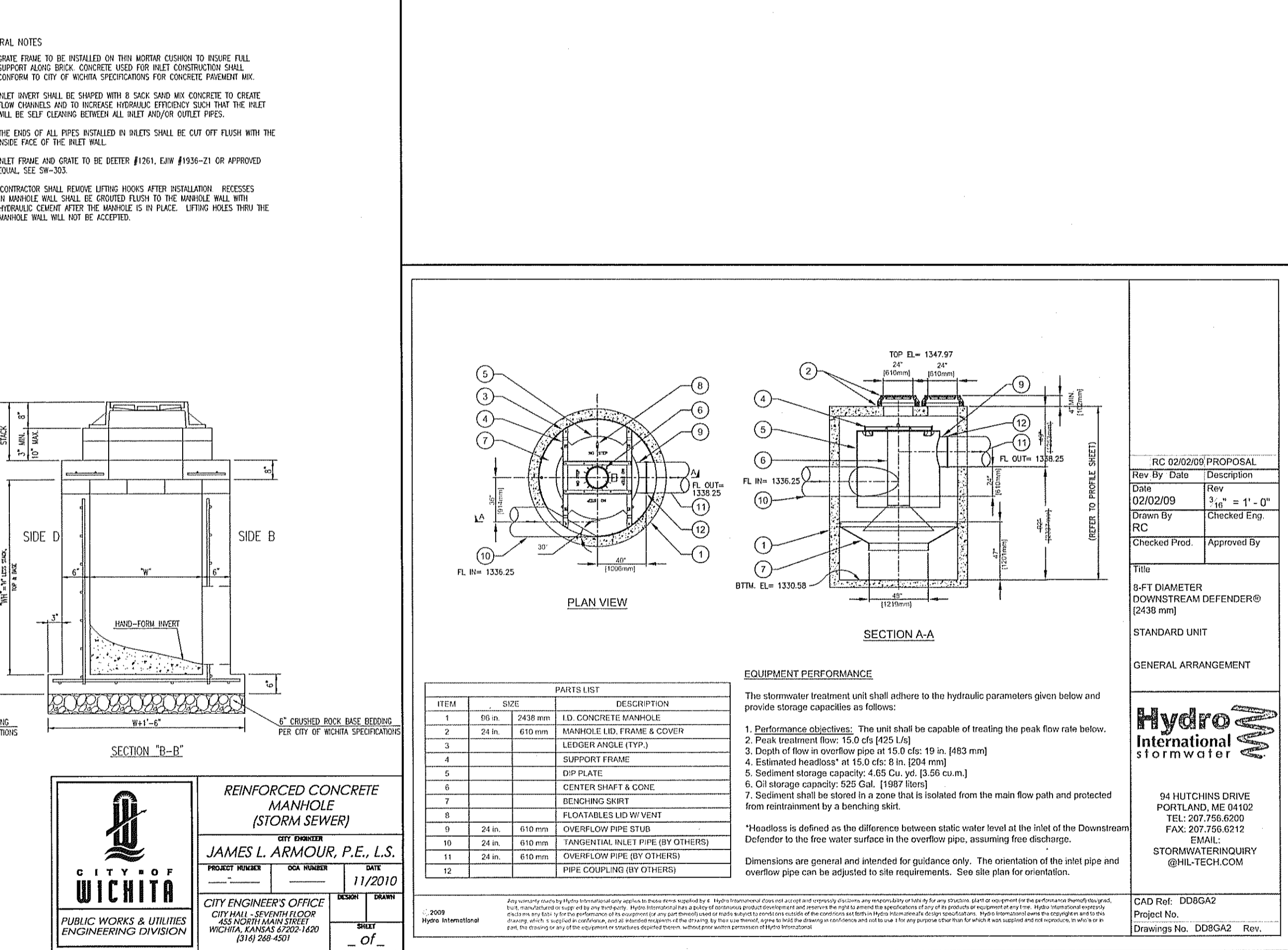
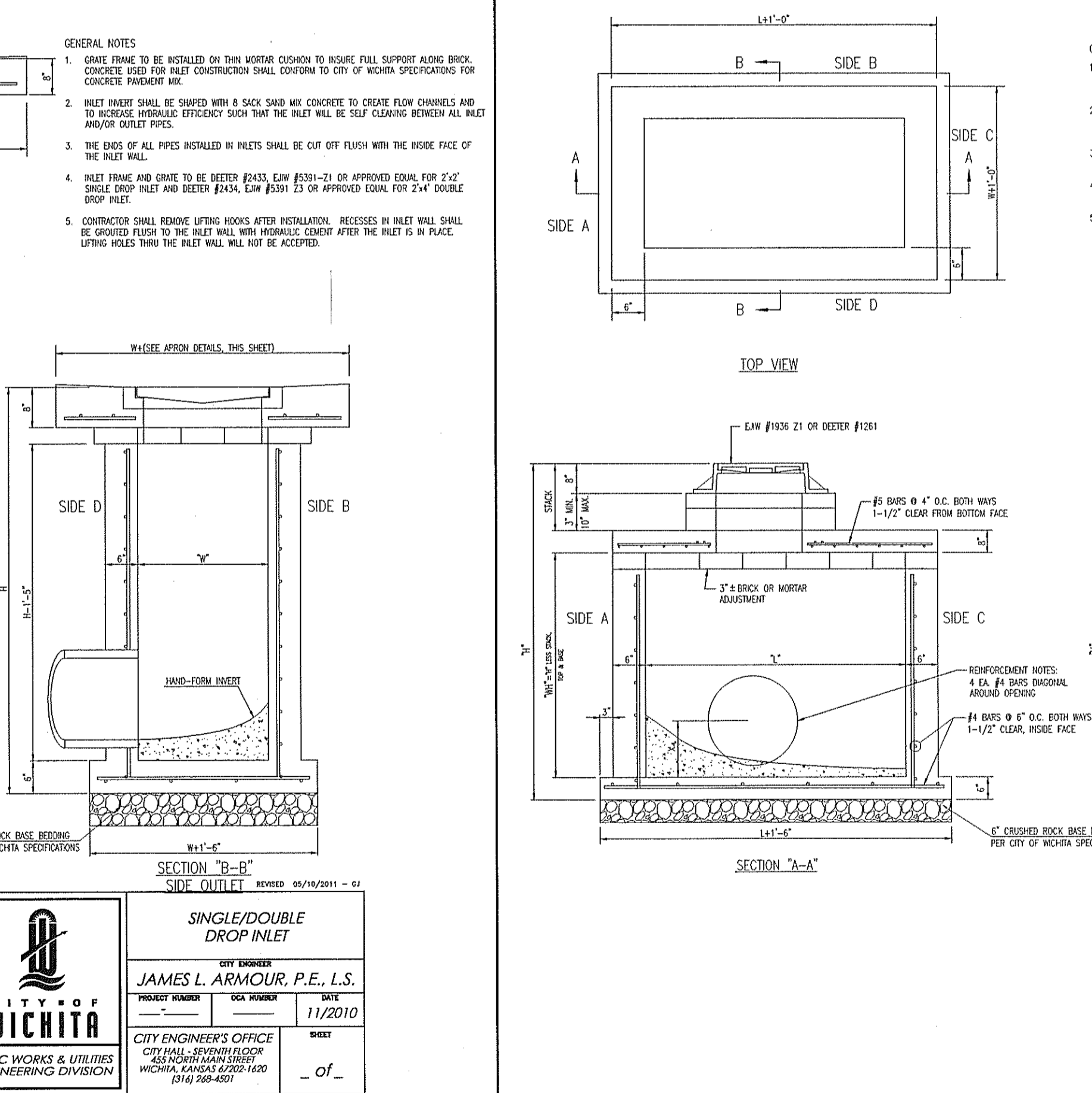
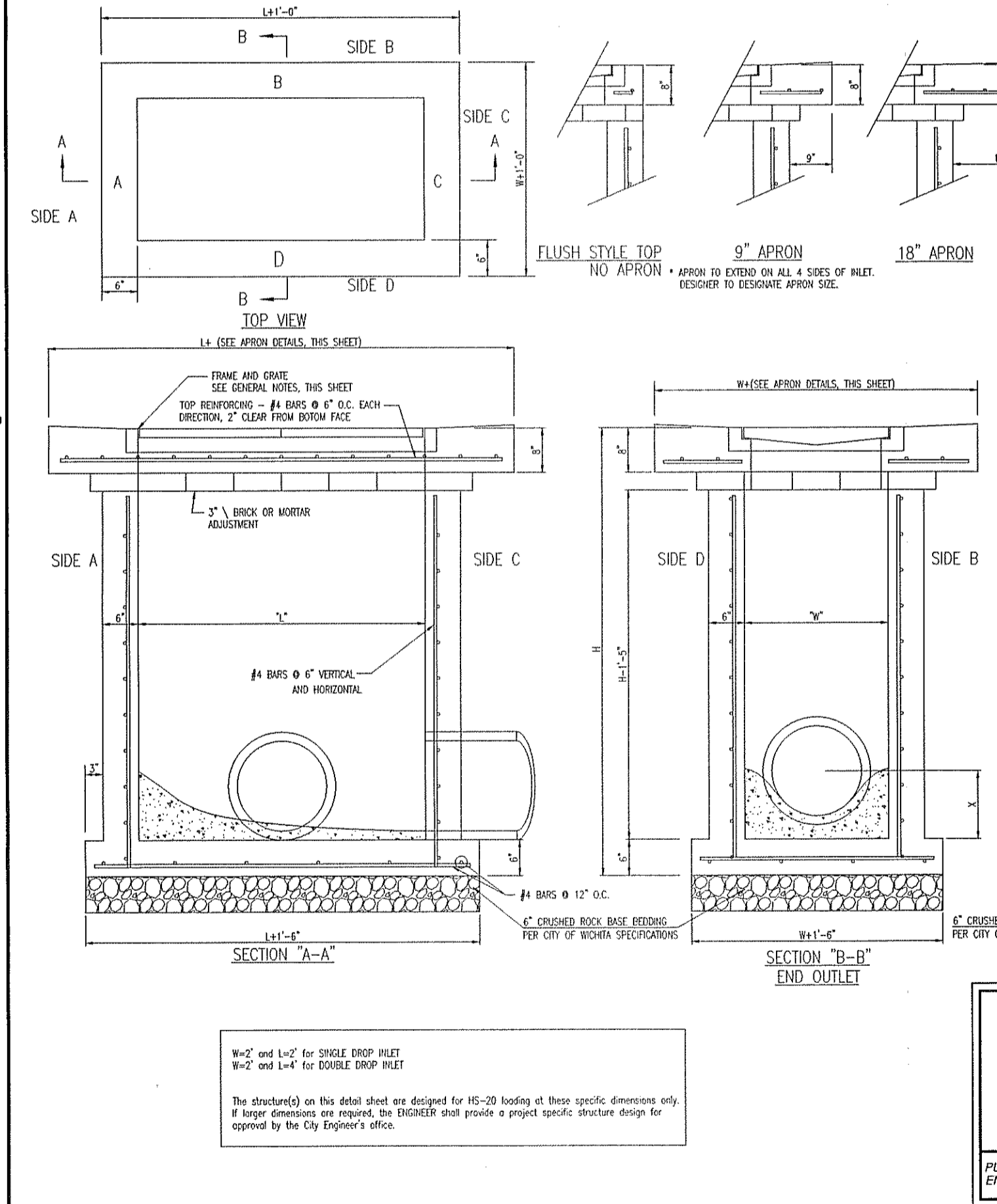


CITY OF WICHITA
PUBLIC WORKS & UTILITIES ENGINEERING DIVISION

PRECAST CONCRETE MANHOLE (STORM SEWER)

JAMES L. ARMOUR, P.E., L.S.

PROJECT NUMBER: 064724
SHEET: 11/2010
DRAWN: []
CHECKED: []
DATE: 11/2010



CVS pharmacy

NORTHERN 13,225-RIGHT CHAMFER DRIVE-THRU

STORE NUMBER: 10077

SW W 13TH ST AND MAIZE RD
WICHITA, KS

PROJECT TYPE: NEW CONSTRUCTION
DEAL TYPE: Fee for Service/Land/Type B

CS PROJECT NUMBER: 064724

ARCHITECT OF RECORD

NORR
ARCHITECTS ENGINEERS PLANNERS

CONSULTANT:
PREMIER CIVIL ENGINEERING

308 TCW Court
Lake Saint Louis, MO 63367
Phone: (314) 925-7444
Fax: (314) 925-7457

DEVELOPER:

VELMEIR COMPANIES

ENGINEERS AUTHENTICATION

The responsibility for professional engineering liability on this project is hereby limited to the acts of persons authorized by this seal, signature, and date hereon attached. Responsibility is disclaimed for all other engineering acts involved in this project and specialty activities performed after this date unless reauthorized.

JAMES L. ARMOUR, P.E., L.S.
Professional Engineer
No. 20422

REVISIONS:

8/13/12 - ADDED NYLOPLAST BASIN DETAIL

DRAWING BY: M. FOGARTY

DATE: 6-1-2012

JOB NUMBER: 113201

TITLE: UTILITY DETAIL

SHEET NUMBER: SHEET C-8.3

COMMENTS: