

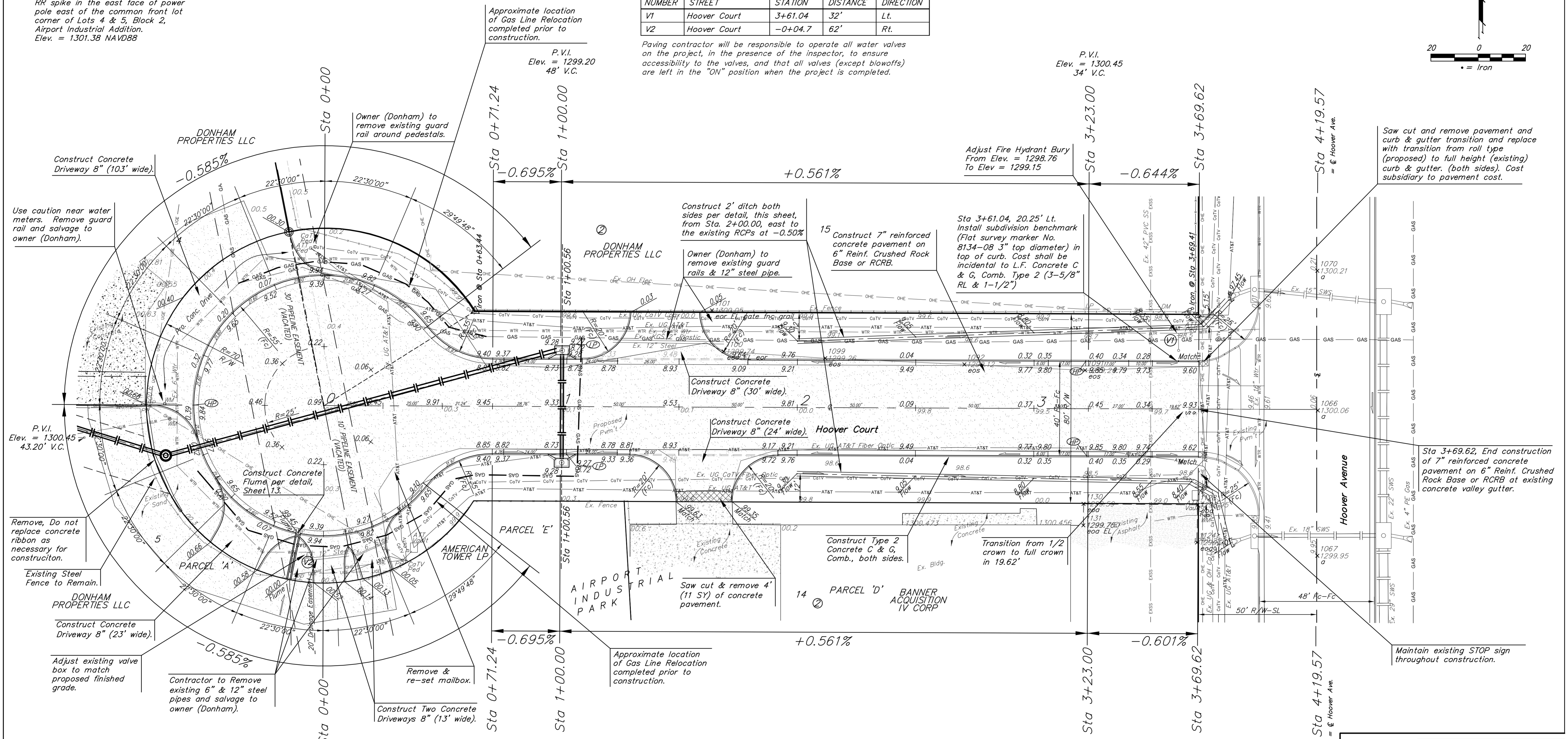
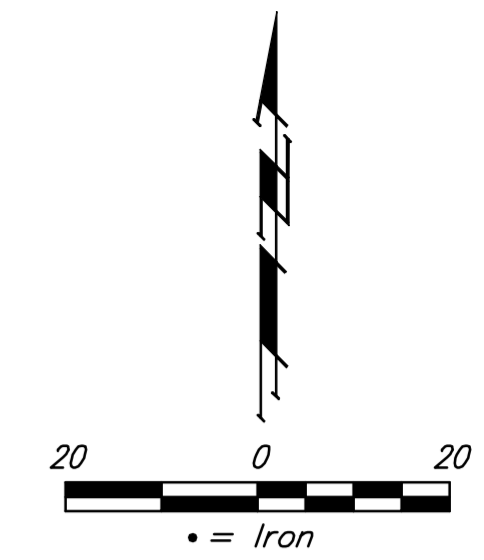
BM#1
 "□" Cut on the west side of the south curb return of the Hoover St. concrete drive to Lot 15, Block 2, Airport Industrial Park.
 Elev. = 1300.65 NAVD88

BM#2
 RR spike in the east face of power pole east of the common front lot corner of Lots 4 & 5, Block 2, Airport Industrial Addition.
 Elev. = 1301.38 NAVD88

WATER VALVE LOCATION TABLE

VALVE NUMBER	STREET	BASELINE STATION	OFFSET DISTANCE	OFFSET DIRECTION
V1	Hoover Court	3+61.04	32'	Lt.
V2	Hoover Court	-0+04.7	62'	Rt.

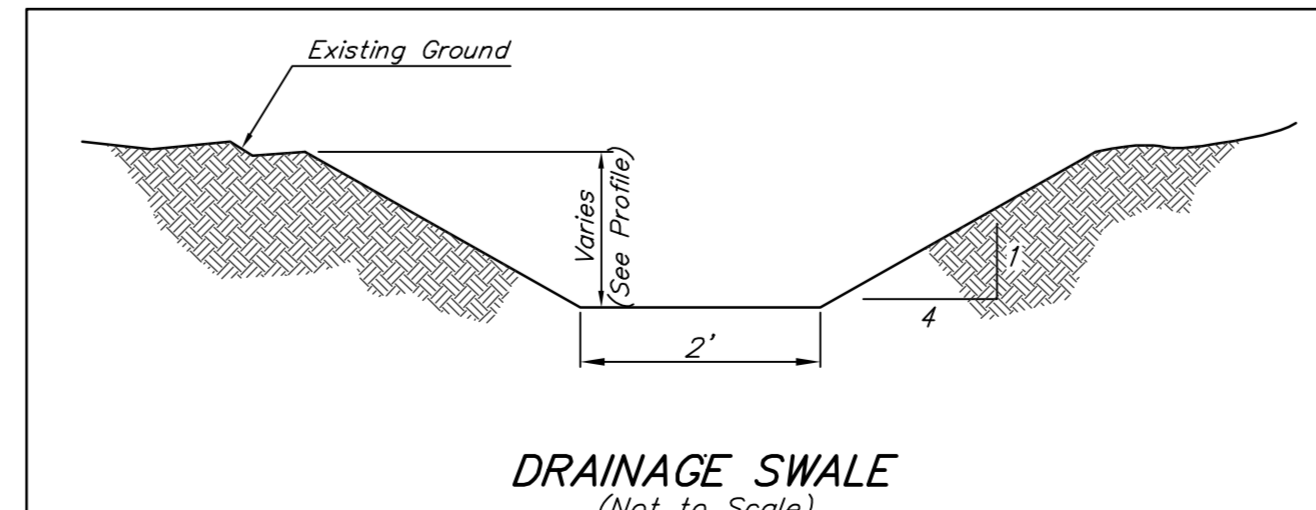
Paving contractor will be responsible to operate all water valves on the project, in the presence of the inspector, to ensure accessibility to the valves, and that all valves (except blowoffs) are left in the "ON" position when the project is completed.



P.V.I.
 Elev. = 1300.45
 43.20' V.C.

P.V.I.
 Elev. = 1299.20
 48' V.C.

P.V.I.
 Elev. = 1300.45
 34' V.C.



NOTE: ROLL TYPE CURB & GUTTER TO BE CONSTRUCTED ON THE PAVEMENT SHOWN ON THIS SHEET. TOP OF CURB ELEVATIONS ARE GIVEN FOR FULL HEIGHT CURB.

Street & Station	Location Description	Elevation
Hoover Court 3+61.04, 20.25' Lt.	Adjacent to fire hydrant 8.5' west of north end of return at intersection of Hoover Court and Hoover Ave.	

B Baughman
 AIRPORT INDUSTRIAL PARK
HOOVER CT.
 STA 0+00 TO STA 4+19.57

Baughman Company, P.A. 315 Ellis St. Wichita, KS 67211 P 316-263-7271 F 316-262-0146
 ENGINEERING | SURVEYING | PLANNING | LANDSCAPE ARCHITECTURE

PROJECT NUMBER	DESIGN AEG	DRAWN TMS
REVISIONS: 5/13/13	APPROVED	DATE 02/13
Drive Pipe Thickness to 8" & Gas relocation routing	SCALE Noted	SHEET

8 OF 23

StrSWS.dwg 12-08-E790