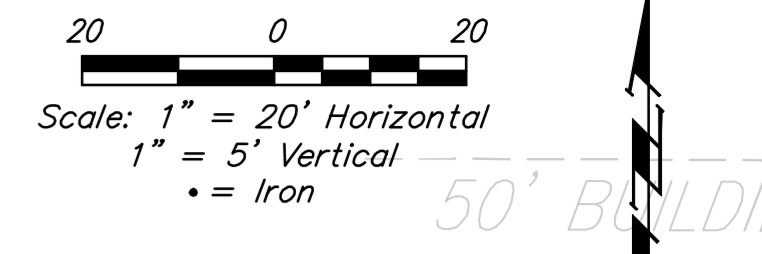


BM#1  
"c" Cut on the west side of the south curb return of the Hoover St. concrete drive to Lot 15, Block 2, Airport Industrial Park.  
Elev. = 1300.65 NAVD88

BM#2  
RR spike in the east face of power pole east of the common front lot corner of Lots 4 & 5, Block 2, Airport Industrial Addition.  
Elev. = 1301.38 NAVD88

Proposed SWS conflicts with existing underground ATT lines. Contractor to coordinate with John Fagan, 268-2102 at AT&T to coordinate adjustment/relocation.



Sta. 0+00.0, Line 1  
Begin construction of Pipe, RCP 18" W/ End Section. Restrain end section and first joint of pipe. 27.0 S.Y. Rip-Rap, Light Stone (with toewall). See detail, sheet 14. Grade swale to daylight drainage from SWS system to main channel. Cost incidental to SWS pipe.

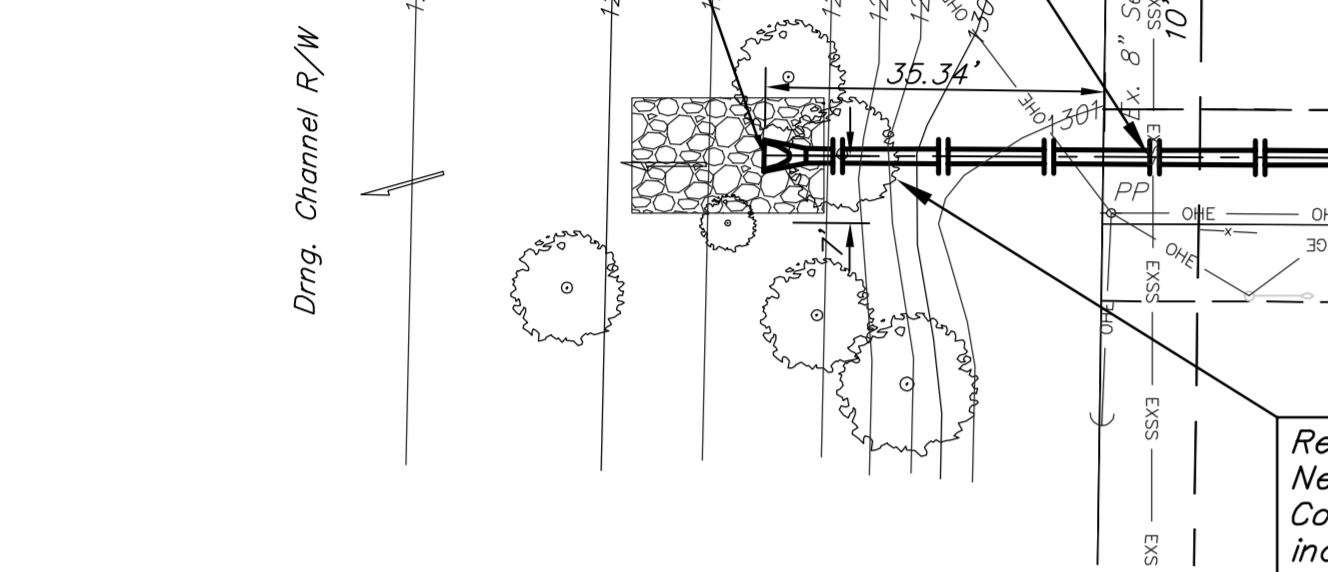
CAUTION!  
Ex. 8" SS Crossing

CAUTION!  
Ex. UG Elec. Crossing & Guy Anchor Crossing. Contractor may need to provide temp. support for adjacent existing utility pole. Contact Randy Truitt, 261-6512, 7 days prior to construction.

CAUTION!  
Ex. OH Elec. Crossing

CAUTION!  
Ex. UG AT&T Crossings

Sta. 4+85.6, Line 1  
Construct Inlet, Curb (Type 1A) (L=5' W=3')  
Top Elev. = 1299.28



DRAINAGE SWALE  
(Not to Scale)

Remove Trees as Necessary for Construction. Cost included in Site Clearing.

\* Depth of existing 6" water line is unknown. Contractor to verify depth and lower water line as necessary for storm sewer construction. Coordinate construction with City of Wichita Water Dept. Cost to be included in bid item "6" Water Line Removed & Replaced".

CAUTION!  
Ex. Wtr. Service Crossing. Contractor to adjust/relocate water service line at storm sewer crossing as necessary for construction. Cost to be included in bid item, "Private Service Line Adjusted."

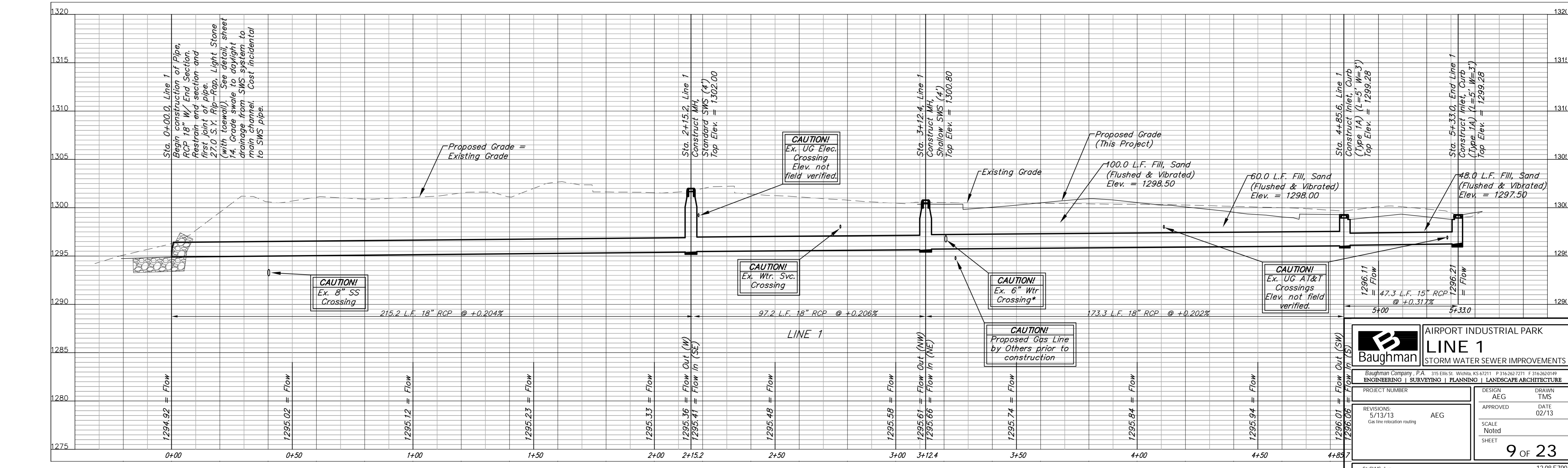
Remove, Do not replace concrete ribbon as necessary for construction.

Sta. 3+12.4, Line 1  
Construct MH, Shallow SWS (4')  
Top Elev. = 1300.80

Sta 3+25 to Sta 4+85  
Install 160.0 L.F. Fill, Sand (Flushed & Vibrated) per City specs.

Sta 4+85 to Sta 5+33  
Install 48.0 L.F. Fill, Sand (Flushed & Vibrated) per City specs.

Sta. 5+33.0, End Line 1  
Construct Inlet, Curb (Type 1A) (L=5' W=3')  
Top Elev. = 1299.28



CAUTION!  
Ex. 8" SS Crossing

CAUTION!  
Ex. Wtr. Svc. Crossing

CAUTION!  
Ex. UG Elec. Crossing Elev. not field verified.

CAUTION!  
Ex. 6" Wtr Crossing\*

CAUTION!  
Proposed Gas Line by Others prior to construction

CAUTION!  
Ex. UG AT&T Crossings Elev. not field verified.

CAUTION!  
Ex. UG AT&T Crossings Elev. not field verified.

		<b>AIRPORT INDUSTRIAL PARK</b> <b>LINE 1</b> STORM WATER SEWER IMPROVEMENTS	
		Baughman Company, P.A. 315 Ellis St. Wichita, KS 67211 P 316-263-7271 F 316-262-0149 ENGINEERING   SURVEYING   PLANNING   LANDSCAPE ARCHITECTURE	
PROJECT NUMBER	DESIGN	AEG	DRAWN
REVISIONS	5/13/13	AEG	TMS
5/13/13 Gas line relocation routing		APPROVED	DATE
		SCALE	02/13
		NOTED	
		SHEET	9 OF 23