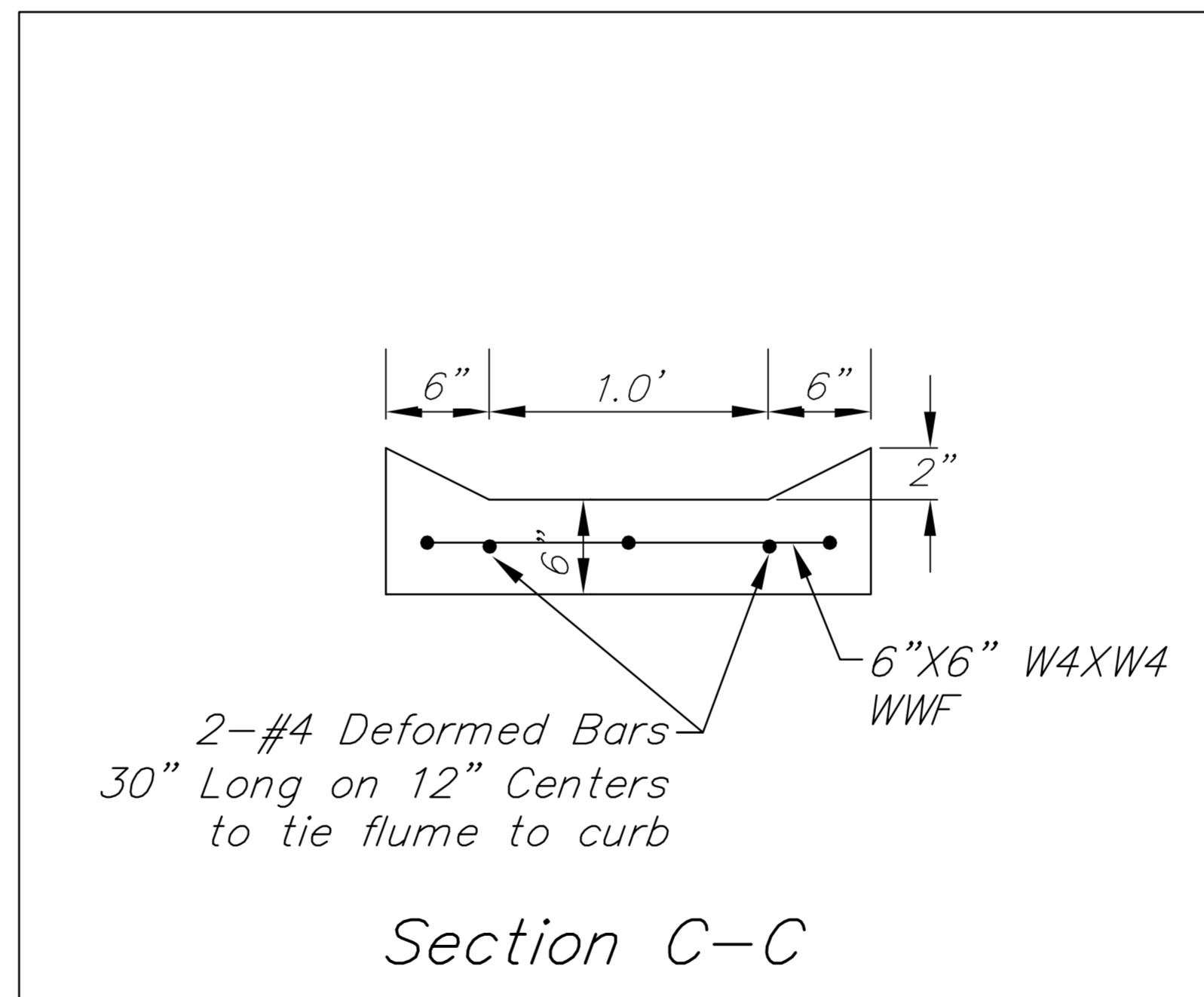
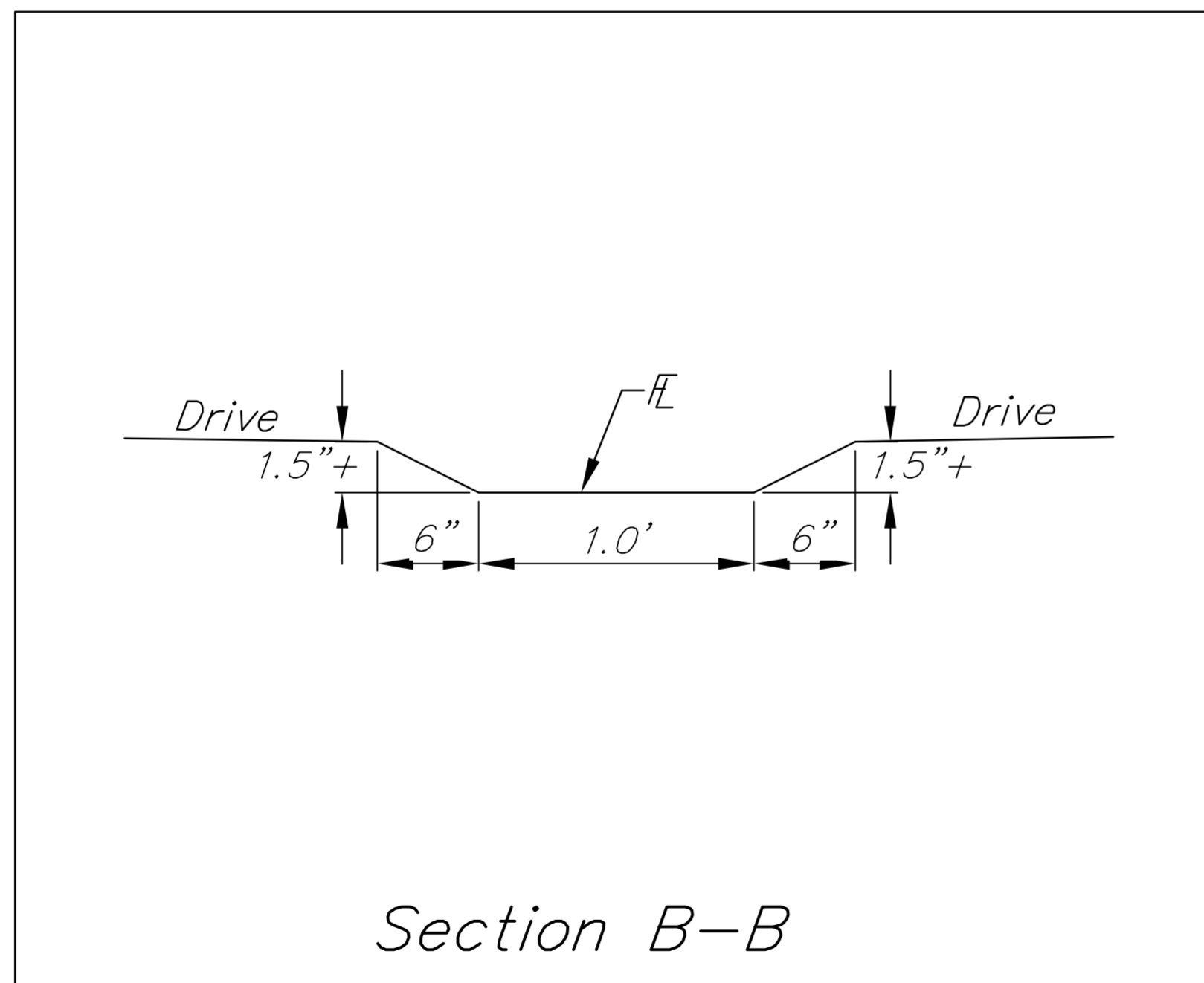
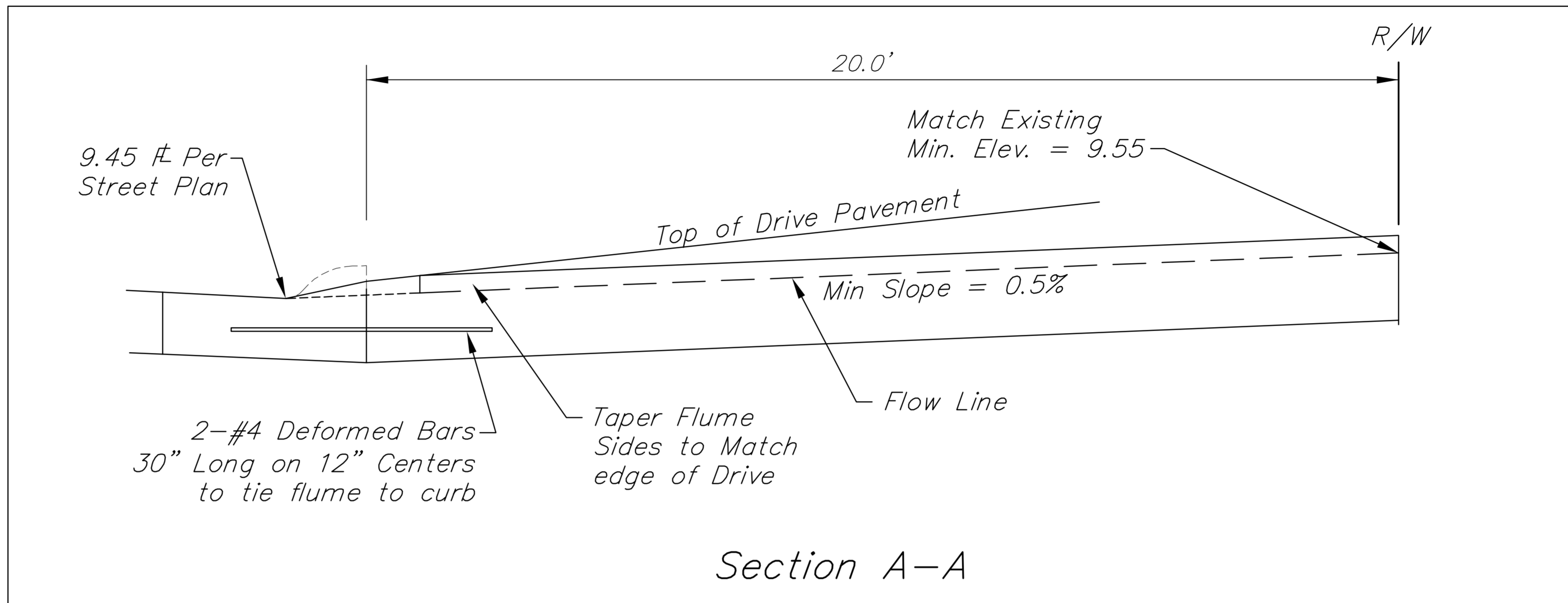
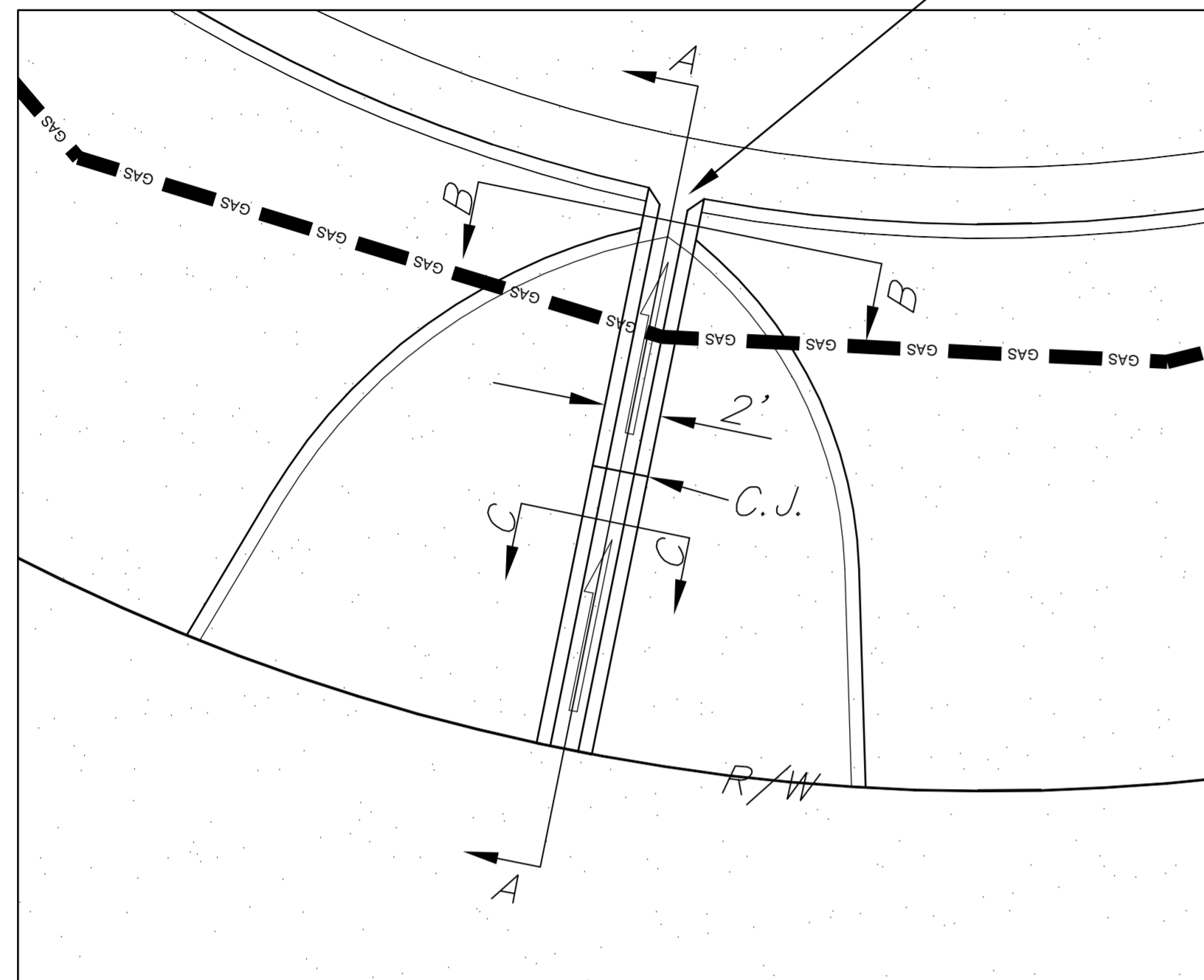


Flat concrete section between drives for flume drainage to curb & gutter section.



	AIRPORT INDUSTRIAL PARK FLUME DETAIL	
	<small>Baughman Company, P.A. 315 Ellis St. Wichita, KS 67211 P 316-263-7271 F 316-262-0149 ENGINEERING SURVEYING PLANNING LANDSCAPE ARCHITECTURE</small>	
PROJECT NUMBER	DESIGN	DRAWN
REVISIONS:	APPROVED	DATE 02/13
	SCALE NONE	SHEET 13 OF 23
<small>StrSWS.dwg StrSWS.dwg</small>		<small>12-08-E790</small>