

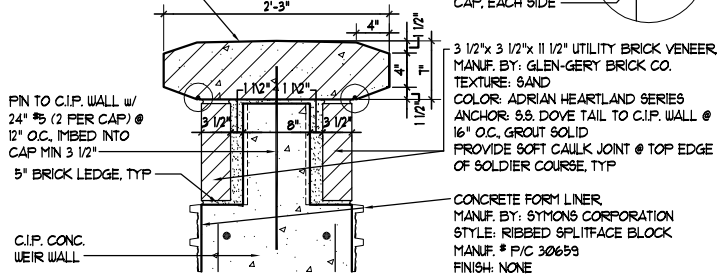
length of 4000 psi at 28 days. Contractor shall submit prior to construction. MANUAL OF CONCRETE PRACTICE", TYPE I OR III, meet ASTM C33.

g cast against soil. All other cover shall be 2". engineered fill at elevations shown on details. r construction. 20 or approved equal.

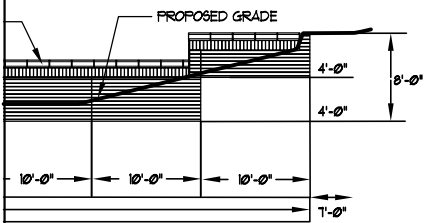
reen C-350 or approved equal. concrete form liner, and drystack ledgestone shall be rete weir structure.

1 PRECAST CONC. CAP MANUF. BY ARCHITECTURAL CAST STONE FINISH: SANDBLAST COLOR: LIMESTONE WASH: 1/4" / FT

NOTE: PROVIDE 1/4"x 3/8" DEEP DRIP EDGE UNDER BTM SIDE OF CAP, EACH SIDE



WEIR PRECAST CAP
1" = 1'-0"



1 REVISION 02/17/03

AM ELEV.

H:\CIVIL\02167\DWG\GRAD\WEIRS\WEIR4A

MKEC
ENGINEERING CONSULTANTS
411 N. WEBB ROAD
WICHITA, KS. 67206
316 - 684 - 9600

HAWTHORNE ADDITION
PROJECT NAME

PARTIAL (REVISION)
SHEET TITLE

DRK DESIGN BY:	B/JH DRAWN BY:	DRK CHECKED BY:
JANUARY 2003 DATE	02167 JOB NO.	9 / 46 SHEET/OF