

# PRIVATE DRAINAGE IMPROVEMENTS

TO SERVE

## CESSNA AIR TEMPERING-PHASE 2

PRIVATE PROJECT NO. 0156 PPD [607861]

### CITY OF WICHITA, KANSAS

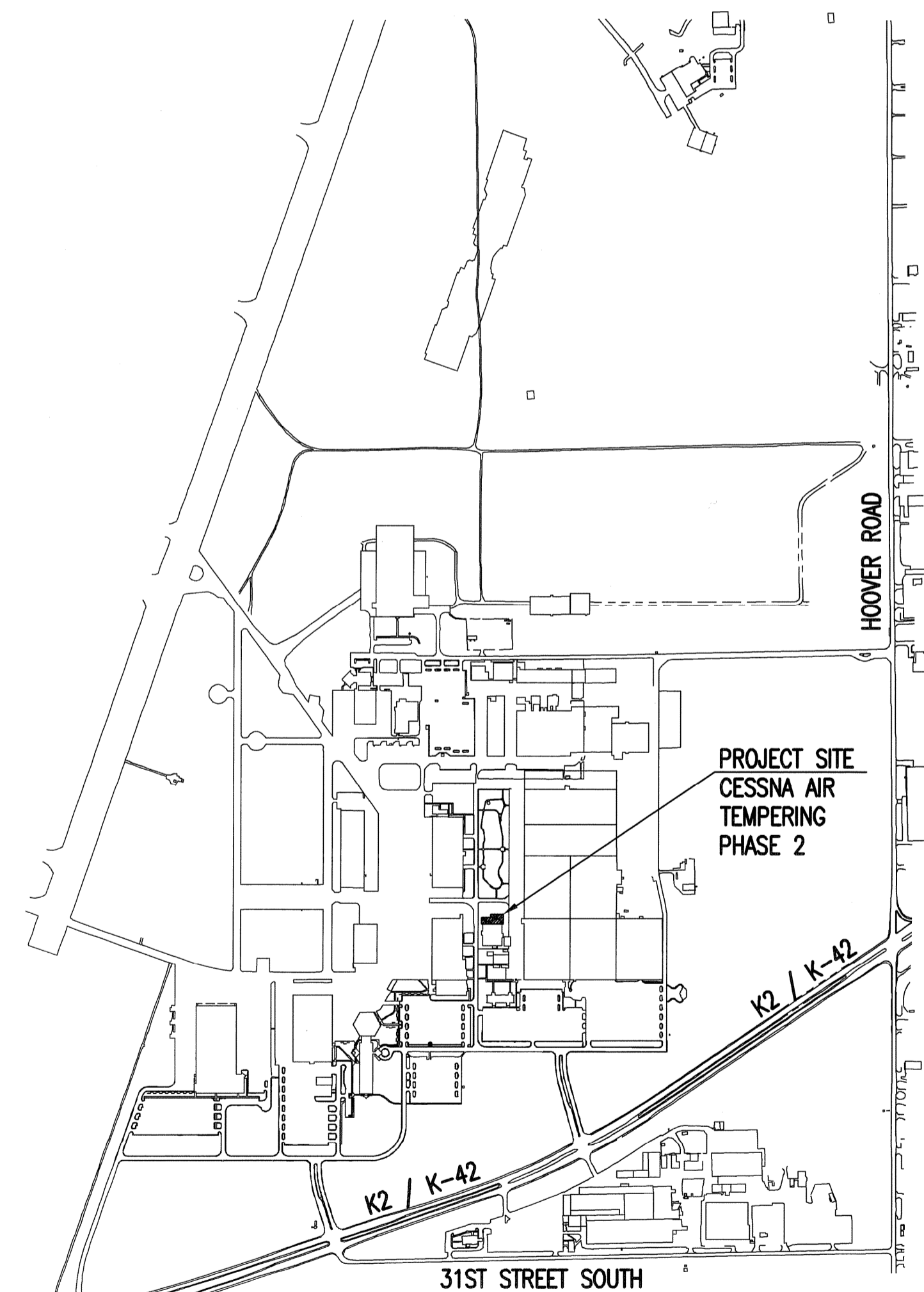
GARY JANZEN, P.E. - CITY ENGINEER

**DEVELOPER CONTACT**

MR. JOHN FOWLER  
CESSNA AIRCRAFT COMPANY  
P.O. BOX 7704  
WICHITA, KANSAS 67277-7704

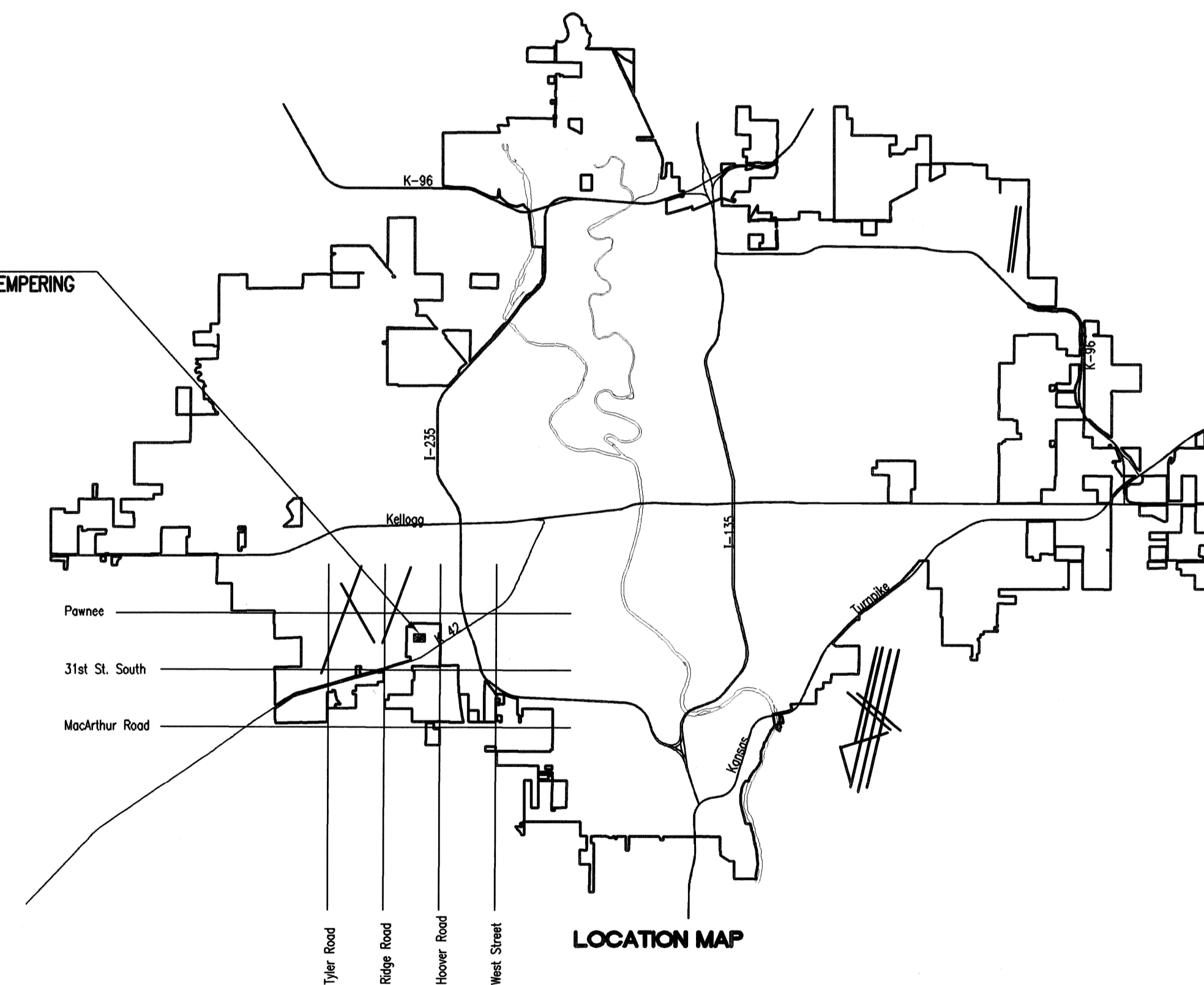
**INDEX OF SHEETS**

C201	TITLE SHEET
C202	KEY MAP AND GENERAL NOTES
C203	PLAN AND PROFILE-SWS LINE 1
C204	SINGLE/DOUBLE DROP INLET
C103	EROSION CONTROL PLAN
C401	EROSION CONTROL DETAILS



NOT TO SCALE

PROJECT SITE  
CESSNA AIR TEMPERING  
PHASE 2



LOCATION MAP

APPROVED AS NOTED  
BY CITY ENGINEER OF WICHITA

Engineering	<i>[Signature]</i>	2-25-13
Stormwater	<i>[Signature]</i>	2-25-13

**NOTE TO CONTRACTORS**

*Inspection and testing for this project are to be provided by a Licensed Consulting Engineering Firm under contract with the Owner/Developer. Said inspection to be in accordance with the City of Wichita standard construction engineering practices and certified by a Licensed Professional Engineer. No work shall be performed in dedicated easements or public right-of-way by the Contractor without such inspection, nor shall any work be commenced without written authorization by the City Engineer.*

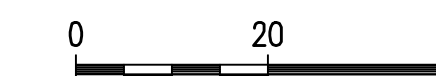
**As-Built Plans**  
**Contractor:** Dondlinger & Sons Construction, Inc.  
**Superintendent:** Mark Doherty  
**Foreman:** Duane Boutz  
**Inspector:** Eric Strecker, Schwab-Eaton, PA  
**PDF by:** ELS 9/17/13

# FEBRUARY 2013

PLANS PREPARED BY  
**PROFESSIONAL ENGINEERING CONSULTANTS, P.A.**  
 ENGINEERS  
 WICHITA, KANSAS

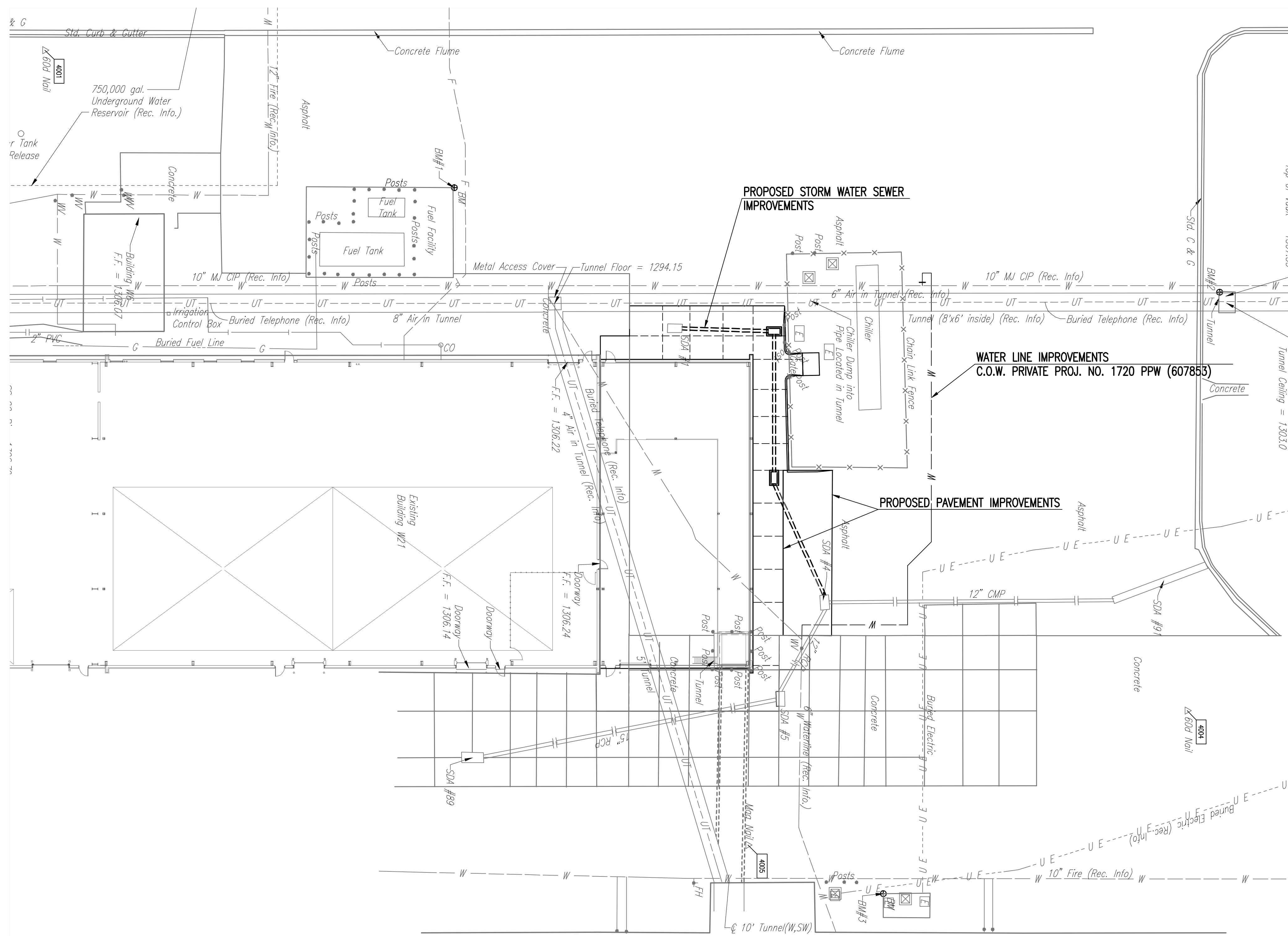


Saved: 02-24-2013 2:07:03 PM by: BLS  
 Plot Scale: 1:1 02-24-2013 2:44:12 PM by: BILL J. SEKSON  
 O:\2012\12628\12628-V2-MD-W2\PPD\12628-V2-C201-PPD-TITLE SHEET



**GENERAL NOTES**

- ALL ELEVATIONS SHOWN ARE NAVD88 DATUM.
- FIELD LOCATE ALL EXISTING UTILITIES PRIOR TO BEGINNING ANY EXCAVATION WORK. CONTACT THE KANSAS-ONE-CALL SYSTEM AT (316) 687-2470 OR 811 AT LEAST 72 HOURS IN ADVANCE TO REQUEST FIELD LOCATES. FOR UTILITIES THAT ARE NOT MEMBERS OF THE KANSAS-ONE-CALL SYSTEM, CONTACT THOSE COMPANIES DIRECTLY.
- THE CONTRACTOR SHALL NOT START WORK ON THE PROJECT UNTIL THE PROJECT INSPECTOR IS ASSIGNED AND IS PRESENT ON THE SITE. ANY WORK DONE WITHOUT INSPECTION WILL BE REQUIRED TO BE UNCOVERED FOR INSPECTION.
- ALL CONSTRUCTION WORK AND MATERIAL IN THIS PROJECT SHALL COMPLY WITH CITY OF WICHITA STANDARD SPECIFICATIONS AND SPECIAL PROVISIONS FOR THE CONSTRUCTION OF PUBLIC PROJECTS UNLESS OTHERWISE NOTED IN THE PLANS.
- UNDERGROUND UTILITY SERVICE LINES AND OVERHEAD UTILITY POLE LINES ARE TO BE ADJUSTED AS NECESSARY BY OTHERS PRIOR TO CONSTRUCTION UNLESS THE PLANS SPECIFICALLY CALL FOR THEIR ADJUSTMENT BY THE CONTRACTOR. EXISTING UTILITIES AND THEIR LOCATION, AS SHOWN ON THE PLANS, REPRESENT THE BEST INFORMATION OBTAINABLE FOR DESIGN. LOCATION INFORMATION HAS BEEN OBTAINED FROM THE VARIOUS UTILITY COMPANIES AND IS EITHER FROM COMPANY RECORD DRAWINGS OR COMPANY PROVIDED FIELD LOCATIONS. THE CONTRACTOR WILL BE REQUIRED TO WORK AROUND EXISTING UTILITIES WITHIN THE RIGHT-OF-WAY WHICH DO NOT CONFLICT WITH PROPOSED CONSTRUCTION.
- RUBBLE FROM THE REMOVAL OF MISCELLANEOUS STRUCTURES SHALL BE DISPOSED OF ON SITES TO BE PROVIDED BY THE CONTRACTOR AND APPROVED AS NOTED BELOW.  
  
ALL DISPOSAL SITES MUST BE APPROVED BY THE KANSAS DEPARTMENT OF HEALTH AND ENVIRONMENT. MATERIAL EITHER STOCKPILED OR DISPOSED OF IN A FLOOD PLAIN WOULD REQUIRE A KANSAS STATE BOARD OF AGRICULTURE PERMIT. ANY MATERIAL DUMPED IN WATERS OF THE UNITED STATES OR WETLANDS IS SUBJECT TO U.S. CORPS OF ENGINEERS PERMITTING REGULATIONS. ANY MATERIAL BURIED OR STOCKPILED BEYOND APPROVED CONSTRUCTION LIMITS WOULD REQUIRE ADDITIONAL ARCHEOLOGICAL INVESTIGATIONS UNLESS BURIED IN A PREVIOUSLY APPROVED BORROW LOCATION.
- EACH CONTRACTOR SHALL VISIT THE SITE OF THE PROJECT BEFORE SUBMITTING THE PROPOSAL FOR THIS WORK SO THAT HE WILL BE FULLY INFORMED OF THE EXISTING FIELD CONDITIONS AND THE OBSTACLES WHICH MIGHT BE ENCOUNTERED. UPON AWARD OF THE CONTRACT THE CONTRACTOR WILL NOT BE GRANTED ANY ADDITIONAL COMPENSATION WITH REGARDS TO TIME AND MONEY FOR CONDITIONS THAT MAY HAVE BEEN EVALUATED DURING ANY INSPECTION OF THE SITE.
- THE CONTRACTOR SHALL PERFORM CONSTRUCTION STAKING, MOBILIZATION, REMOVAL OF MINOR OBSTRUCTIONS, REMOVAL AND SALVAGE OF CONFLICTING PRIVATE IMPROVEMENTS WITHIN THE PROJECT AREA, MINOR SHAPING AND GRADING OF SLOPES FOR FINISHED APPEARANCE, REMOVAL OF CONSTRUCTION DEBRIS, REMOVAL OF TREES WITHIN CONSTRUCTION LIMITS, AND GENERAL CLEAN-UP.
- EROSION CONTROL (BMP'S)  
THE CONTRACTOR SHALL INSTALL AND/OR MAINTAIN EROSION CONTROL METHODS AS SPECIFIED ON THE EROSION CONTROL PLAN CONTAINED HEREIN. INSTALLATION OF THESE BMP'S DOES NOT RELIEVE THE CONTRACTOR OF THE RESPONSIBILITY OF ABATING SOIL EROSION.
- THE CONTRACTOR SHALL GIVE THE OWNER PROPERTY DIRECTLY ABUTTING THE CONSTRUCTION OF THIS PROJECT A MINIMUM OF TEN (10) DAYS ADVANCE NOTICE PRIOR TO START OF CONSTRUCTION.
- THE CONTRACTOR SHALL REMOVE EXISTING ROAD SIGNS THAT INTERFERE WITH CONSTRUCTION. SIGNS DAMAGED THRU NEGLIGENCE OF THE CONTRACTOR SHALL BE REPLACED BY THE CONTRACTOR AT NO ADDITIONAL COST TO THE PROJECT.
- CONTRACTOR SHALL SUPPLY, INSTALL, AND MAINTAIN CONSTRUCTION TRAFFIC CONTROL AS NECESSARY TO PROTECT THE TRAVELING PUBLIC. ALL TRAFFIC CONTROL DEVICES, AND THE INSTALLATION AND USE THEREOF, SHALL CONFORM TO THE REQUIREMENTS OF THE MANUAL ON UNIFORM TRAFFIC CONTROL DEVICES (MUTCD), LATEST EDITION. ALL DEVICES SHALL BE REFLECTORIZED.
- PRIOR TO CONSTRUCTION, THE CONTRACTOR SHALL RE-ESTABLISH CONTROL POINTS AND BENCH MARKS AND VERIFY THEIR ACCURACY.
- THE CONTRACTOR SHALL EXERCISE CAUTION WHILE WORKING IN THE VICINITY OF EXISTING IRRIGATION AND LANDSCAPING ITEMS. ANY REMOVAL, RELOCATION AND/OR REPLACEMENT OF LANDSCAPING ITEMS, SPRINKLER HEADS, IRRIGATION SYSTEMS OR OTHER PRIVATE IMPROVEMENTS THAT ARE IN DIRECT CONFLICT WITH CONSTRUCTION SHALL BE COORDINATED WITH THE ENGINEER. THE CONTRACTOR SHALL BE RESPONSIBLE FOR NOTIFYING THE PROPERTY OWNER OF ANY SUCH WORK, AND FOR REPAIRING ANY DAMAGE TO THE EXISTING PRIVATE IMPROVEMENTS RESULTING FROM CONSTRUCTION OF THE PROJECT.



**PROPOSED STORM WATER SEWER IMPROVEMENTS**

**WATER LINE IMPROVEMENTS  
C.O.W. PRIVATE PROJ. NO. 1720 PPW (607853)**

**PROPOSED PAVEMENT IMPROVEMENTS**

PROPOSED PROJECT INFO:	
TOTAL DISTURBED =	9,245 S.F.
REDEVELOPED IMPERVIOUS =	9,245 S.F.
REDEVELOPED PERVIOUS =	0 S.F.
WATER QUALITY VOLUME	N/A
CHANNEL BACK PROTECTION	N/A
DETENTION REQUIREMENTS	N/A

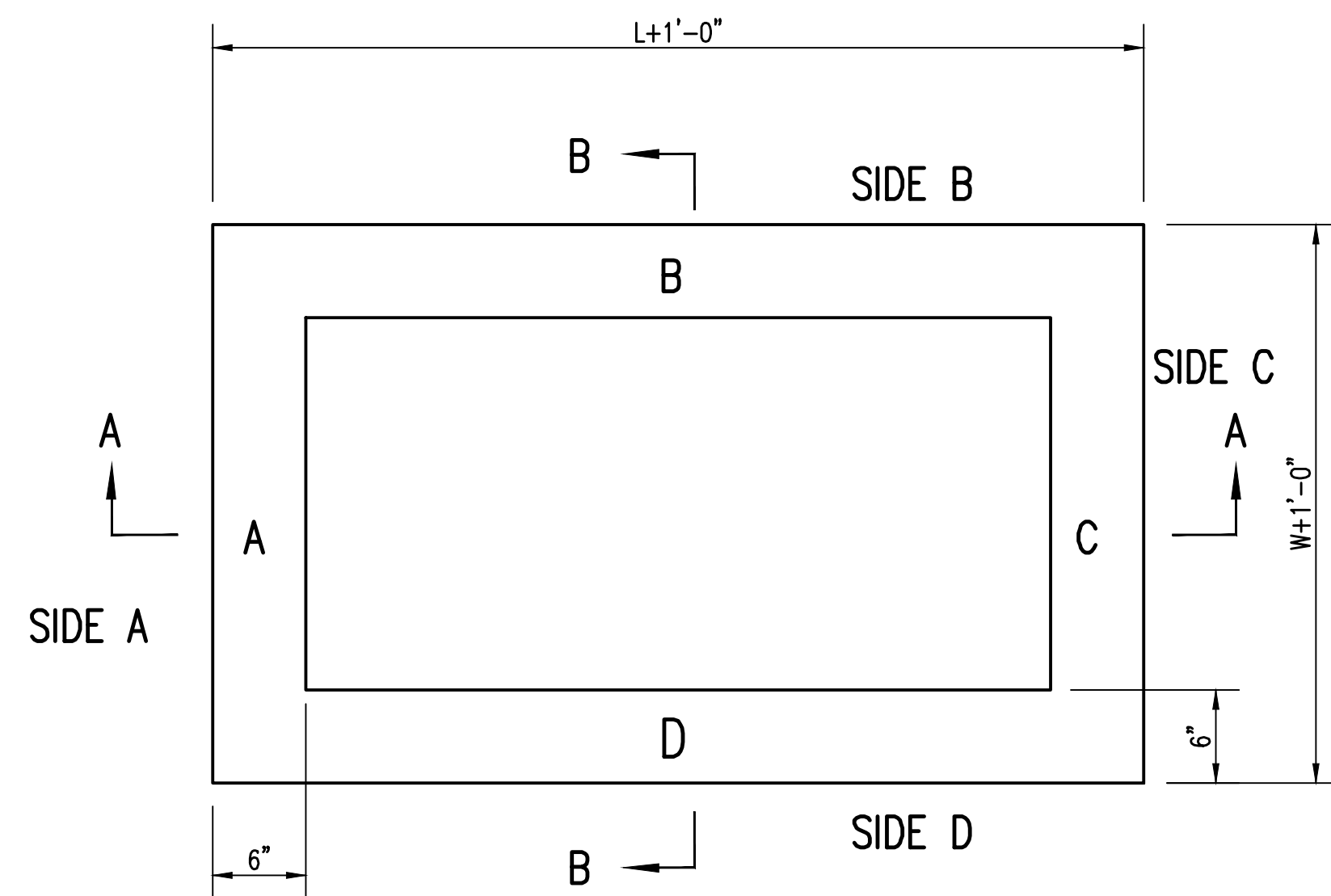
**BENCH MARKS**

VERTICAL DATUM IS NGVD 29

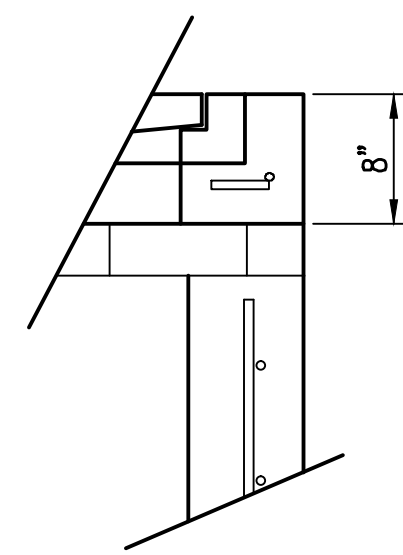
- BM #1 - SQUARE CUT AT NORTHWEST CORNER OF FUELING STATION.  
ELEV. = 1306.40
- BM #2 - SQUARE CUT AT SOUTHWEST CORNER OF TUNNEL ENTRANCE AT SOUTH END OF PARK.  
ELEV. = 1307.28
- BM #3 - SQUARE CUT AT SOUTHWEST CORNER OF ELECTRIC TRANSFORMER PAD ON WEST SIDE NEAR SOUTHWEST CORNER OF W7-2 BUILDING.  
ELEV. = 1306.34

No.	Revision	By	Date
CESSNA AIR TEMPERING-PHASE 2 PRIVATE DRAINAGE IMPROVEMENTS			
<b>KEY MAP AND GENERAL NOTES</b> GARY JANZEN, P.E. - CITY ENGINEER CITY OF WICHITA PRIVATE PROJECT NO. 0156 PPD (607861)			
PROFESSIONAL ENGINEERING CONSULTANTS, P.A. 303 SOUTH TOPEKA WICHITA, KS 67202 316-262-2891 www.pec1.com			
Designed by	CSB	Job No.	35-12628
Drawn by	BJS	Date	January 2013
			Sht. C202 of 6

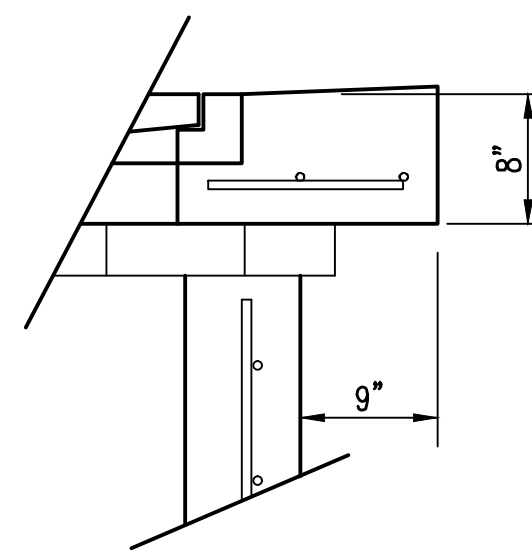




TOP VIEW

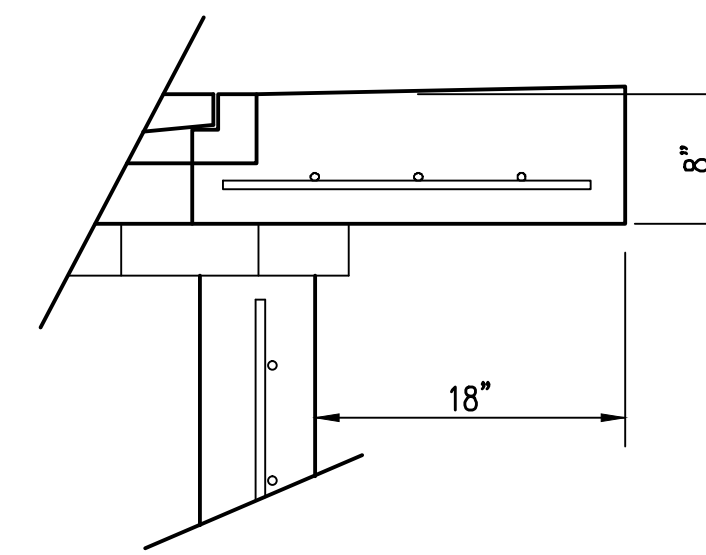


FLUSH STYLE TOP  
NO APRON



9" APRON

\* APRON TO EXTEND ON ALL 4 SIDES OF INLET.  
DESIGNER TO DESIGNATE APRON SIZE.



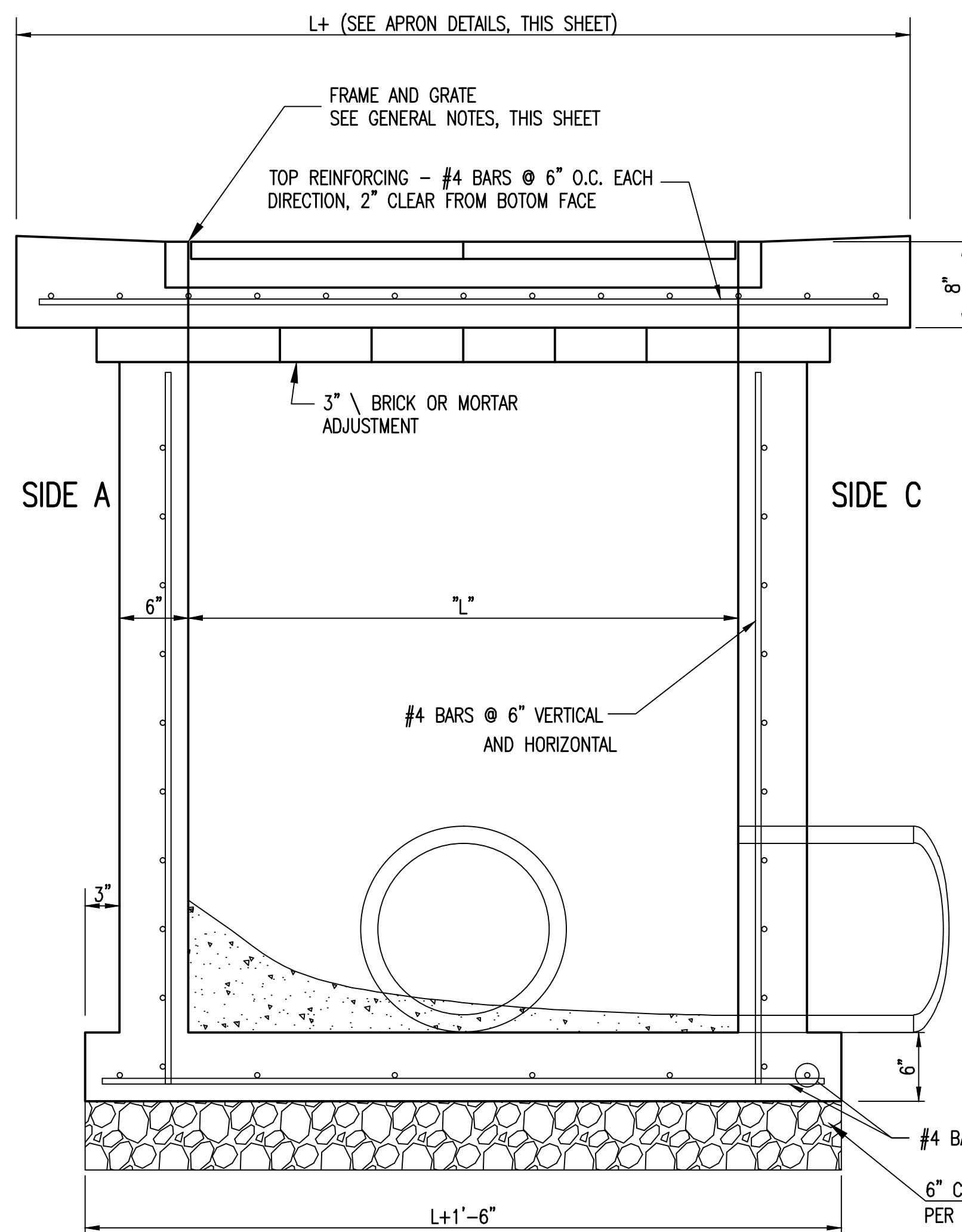
18" APRON

W=2' and L=2' for SINGLE DROP INLET  
W=2' and L=4' for DOUBLE DROP INLET

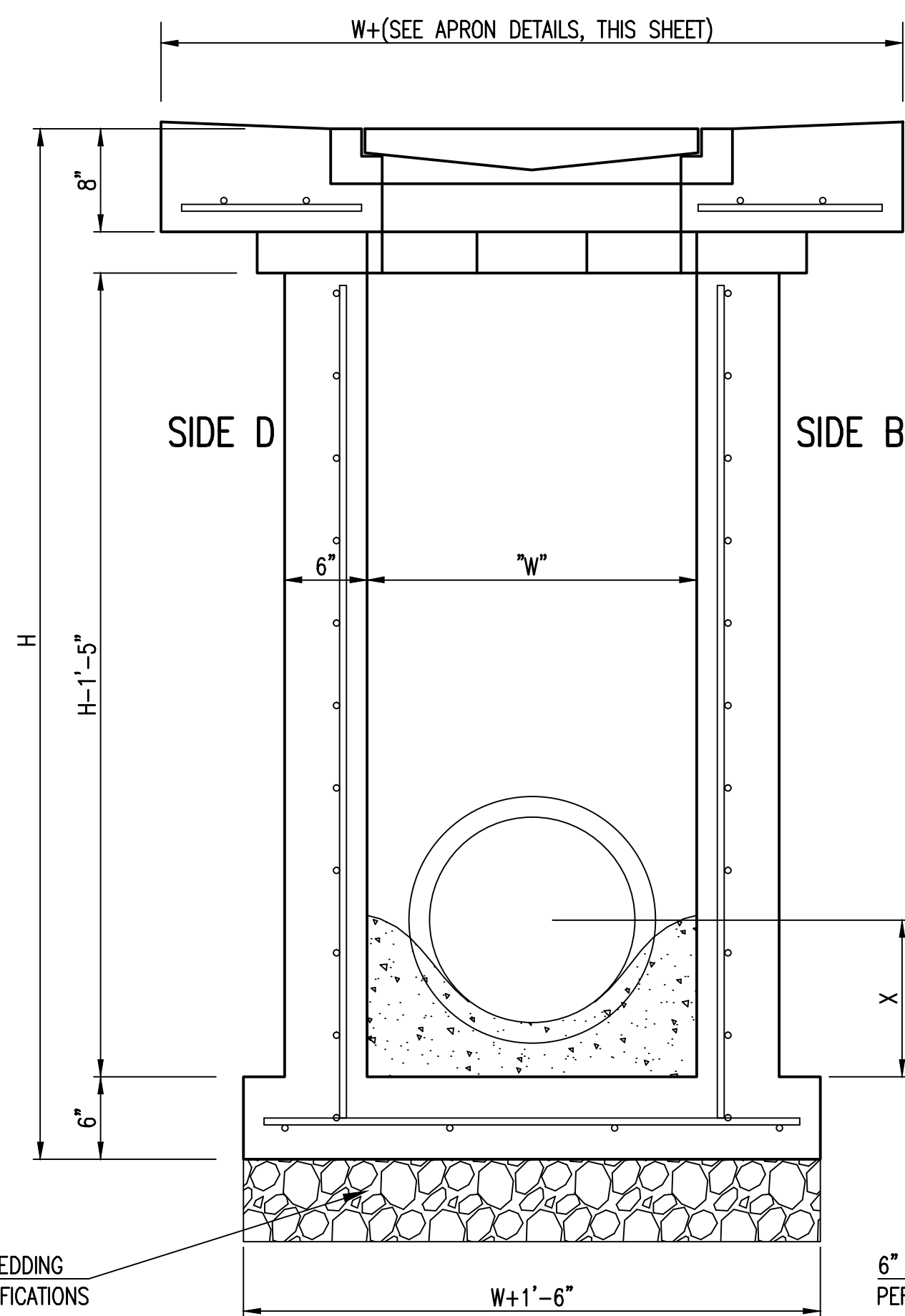
The structure(s) on this detail sheet are designed for HS-20 loading at these specific dimensions only. If larger dimensions are required, the ENGINEER shall provide a project specific structure design for approval by the City Engineer's office.

GENERAL NOTES

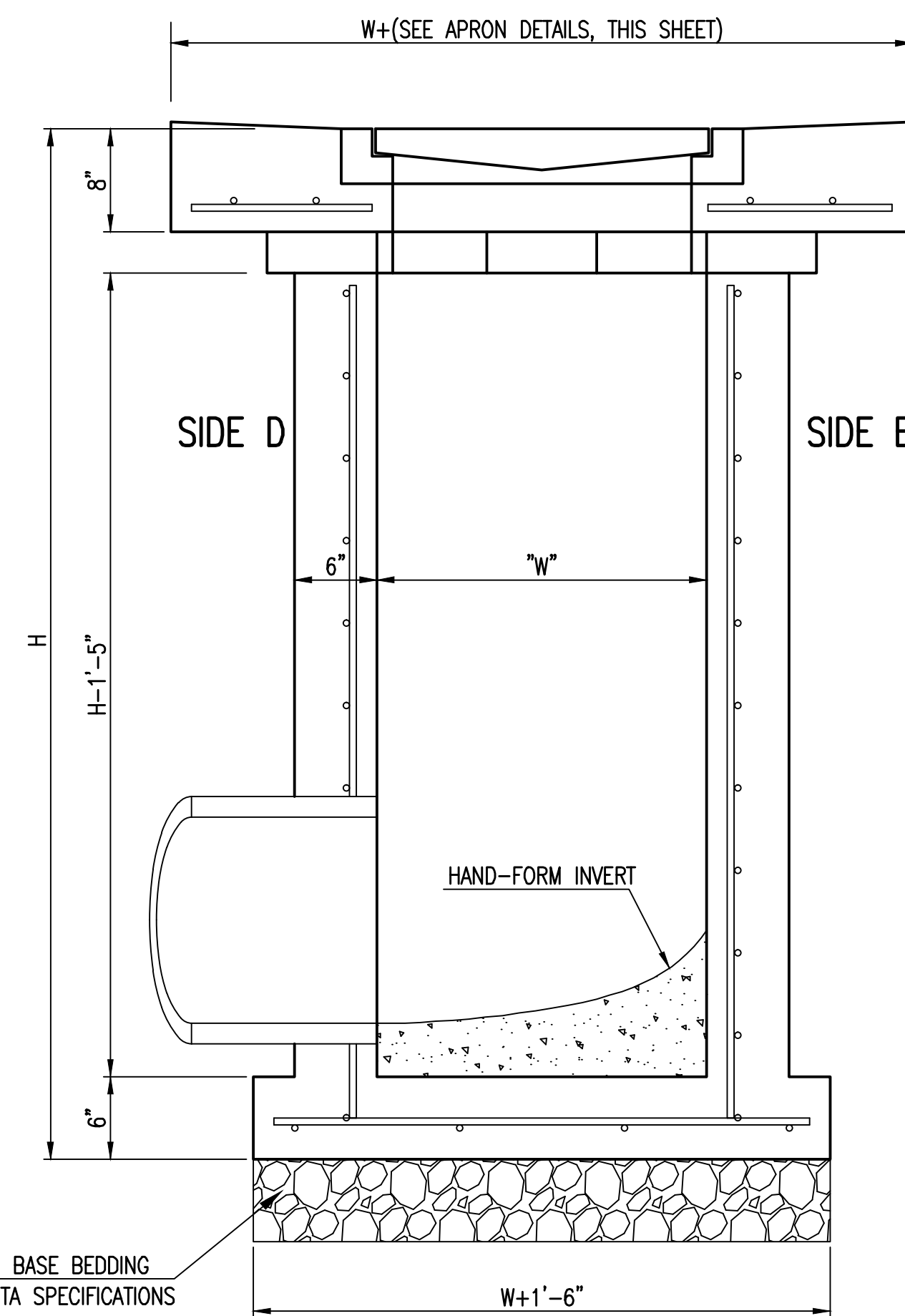
1. GRATE FRAME TO BE INSTALLED ON THIN MORTAR CUSHION TO INSURE FULL SUPPORT ALONG BRICK. CONCRETE USED FOR INLET CONSTRUCTION SHALL CONFORM TO CITY OF WICHITA SPECIFICATIONS FOR CONCRETE PAVEMENT MIX.
2. INLET INVERT SHALL BE SHAPED WITH 8 SACK SAND MIX CONCRETE TO CREATE FLOW CHANNELS AND TO INCREASE HYDRAULIC EFFICIENCY SUCH THAT THE INLET WILL BE SELF CLEANING BETWEEN ALL INLET AND/OR OUTLET PIPES.
3. THE ENDS OF ALL PIPES INSTALLED IN INLETS SHALL BE CUT OFF FLUSH WITH THE INSIDE FACE OF THE INLET WALL.
4. INLET FRAME AND GRATE TO BE DEETER #2433, EJIW #5391-Z1 OR APPROVED EQUAL FOR 2'x2' SINGLE DROP INLET AND DEETER #2434, EJIW #5391 Z3 OR APPROVED EQUAL FOR 2'x4' DOUBLE DROP INLET.
5. CONTRACTOR SHALL REMOVE LIFTING HOOKS AFTER INSTALLATION. RECESSES IN INLET WALL SHALL BE GROUTED FLUSH TO THE INLET WALL WITH HYDRAULIC CEMENT AFTER THE INLET IS IN PLACE. LIFTING HOLES THRU THE INLET WALL WILL NOT BE ACCEPTED.



SECTION "A-A"



SECTION "B-B"  
END OUTLET



SECTION "B-B"  
SIDE OUTLET

Sheet 02-24-2013 2:05:27 PM by BJS  
 Proj. Name: 110\_04-10-2013\_9:10:05 AM by BILL SEKSON  
 C:\2012\1228\1228.VZ MID W21\PPD\1228-VZ-C204-Single-Double Drop Inlet

REVISED 05/10/2011 - GJ



<b>SINGLE/DOUBLE DROP INLET</b>		
CITY ENGINEER <b>GARY JANZEN, P.E.</b>		
PROJECT NUMBER 0156-PPD	OCA NUMBER 607861	DATE 11/2010
CITY ENGINEER'S OFFICE CITY HALL - SEVENTH FLOOR 455 NORTH MAIN STREET WICHITA, KANSAS 67202-1620 (316) 268-4501		SHEET C204 of 6



