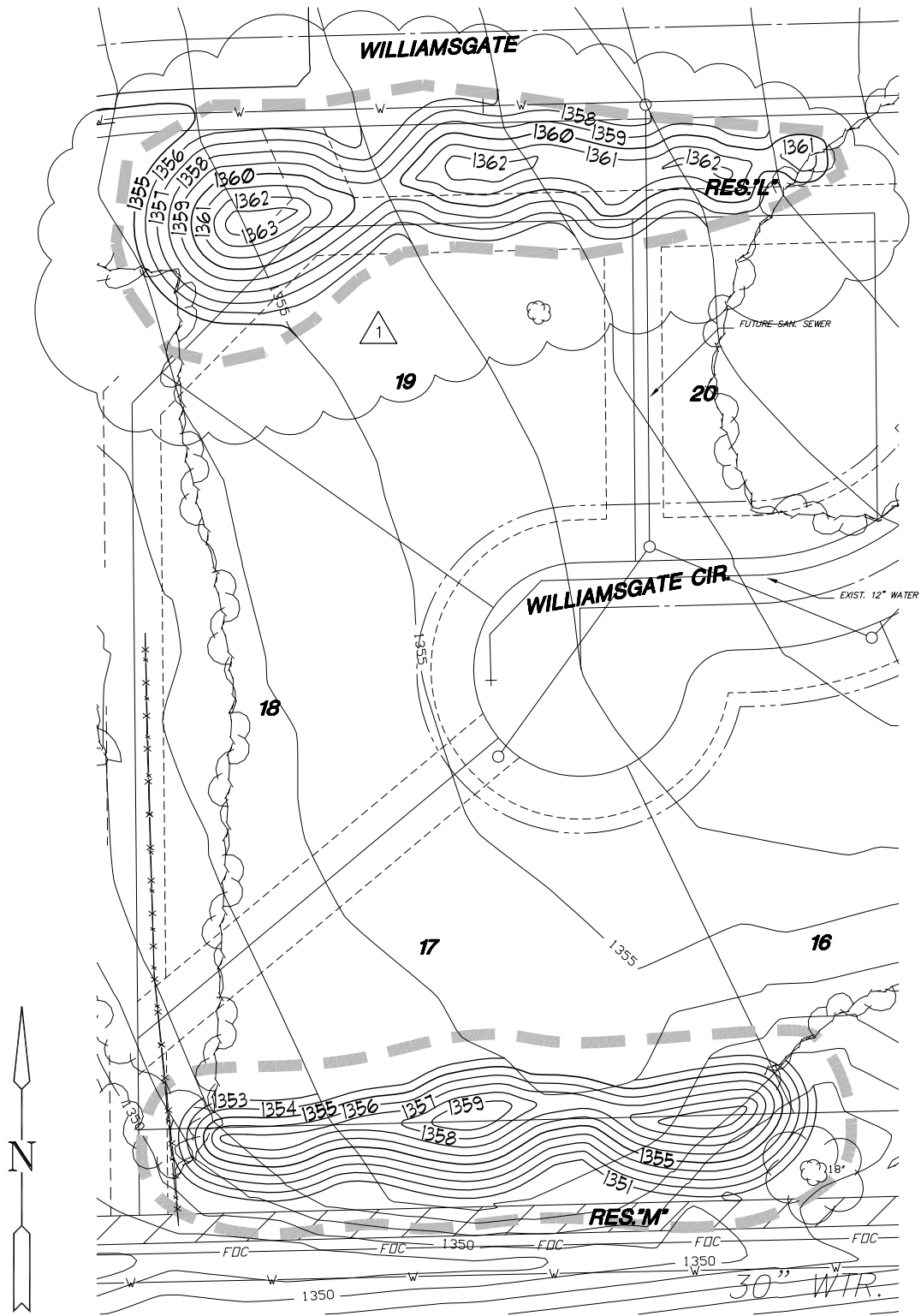


SCALE: 1" = 40'

H:\CIVIL\02167.DWG GRAD POND\02167GDI

**MKEC**  
ENGINEERING  
CONSULTANTS  
411 N. WEBB ROAD  
WICHITA, KS. 67206  
316-684-9600

<b>HAWTHORNE ADDITION</b>		
PROJECT NAME		
<b>PARTIAL (REVISION)</b>		
SHEET TITLE		
DRK	DMU	DRK
DESIGN BY:	DRAWN BY:	CHECKED BY:
JANUARY 2003	02167	3 / 46
DATE	JOB NO.	SHEET/OF



# BERM GRADING PLAN

SCALE: 1" = 30'

1 REVISION 02/17/03

H:\CIVIL\02167\DWG\Grd\FONDS\02167BERM



**MKEC**  
ENGINEERING CONSULTANTS

411 N. WEBB ROAD  
WICHITA, KS. 67206  
316-684-9600

**HAWTHORNE ADDITION**

PROJECT NAME

**PARTIAL (REVISION)**

SHEET TITLE

BH

DESIGN BY:

BFL

DRAWN BY:

DRK

CHECKED BY:

FEBRUARY 2003

DATE

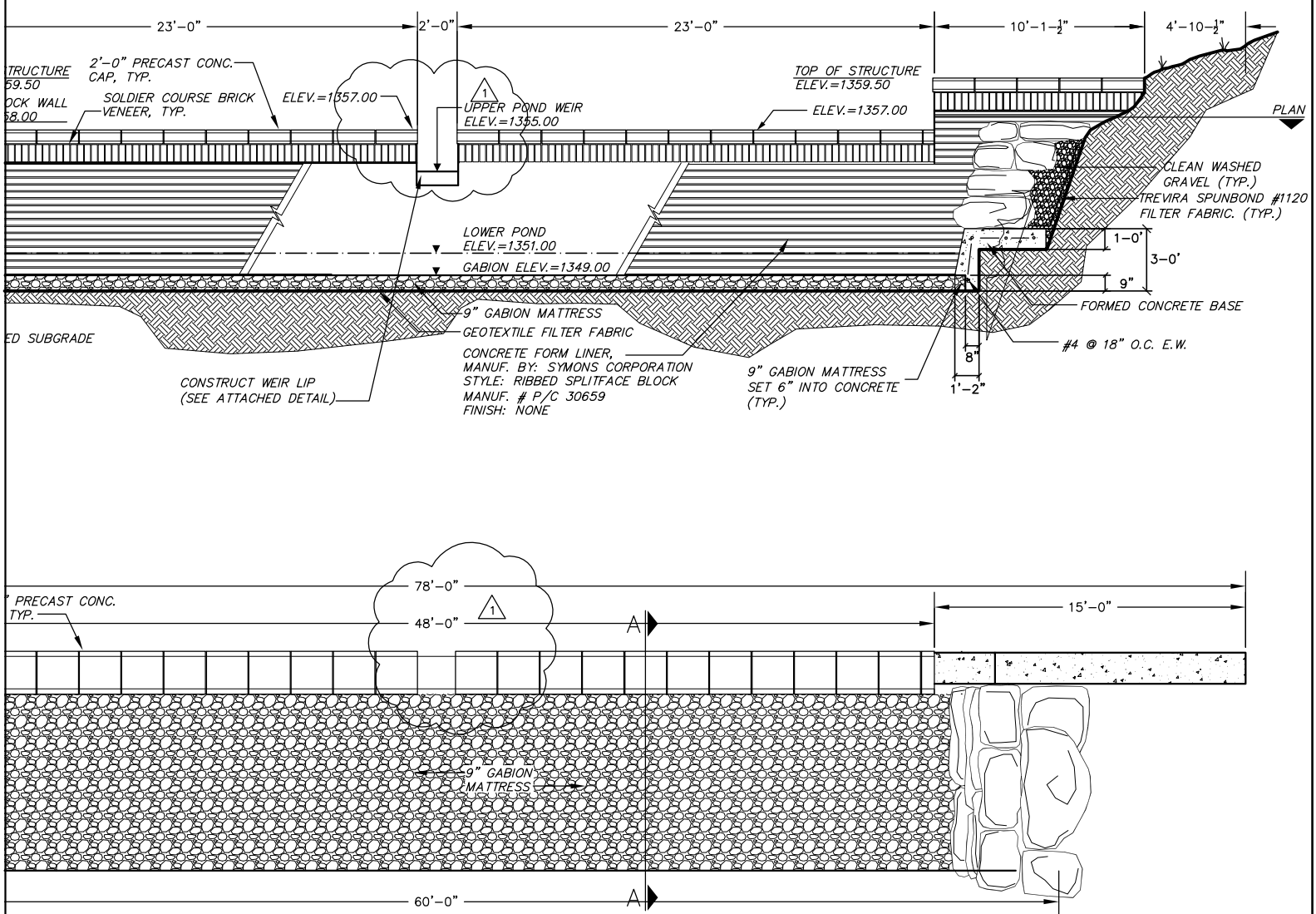
02167

DRAWING NAME

7 / 46

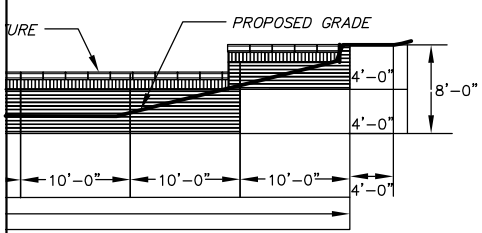
SHEET / OF



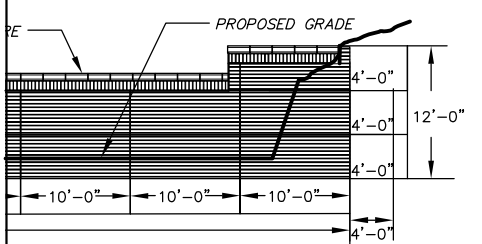


**GENERAL NOTES**

1. All concrete to have minimum compressive strength of 4000 psi at 28 days. Contractor shall submit concrete mix design to Engineer for approval prior to construction.
2. All concrete shall conform to the current "ACI MANUAL OF CONCRETE PRACTICE".
3. Portland Cement shall conform to ASTM C-150, TYPE I OR III.
4. All aggregate for normal weight concrete shall meet ASTM C33.
5. All reinforcing to meet ASTM A615 or GR. 60.
6. Concrete cover shall be 3" in bottom of footing cast against soil. All other cover shall be 2".
7. All footings shall bear on undisturbed earth or engineered fill at elevations shown on details.
8. Earthwork shall be considered subsidiary to weir construction.
9. Geotextile Fabric shall be Trevira Spunbond #1120 or approved equal.
10. Gabions and Mattresses shall be PVC coated.
11. Erosion control mat shall be North American Green C-350 or approved equal.
12. The precast concrete cap, utility brick veneer, concrete form liner, and drystack ledgestone shall be considered subsidiary to the bid item for concrete weir structure.



**UPSTREAM ELEV.**

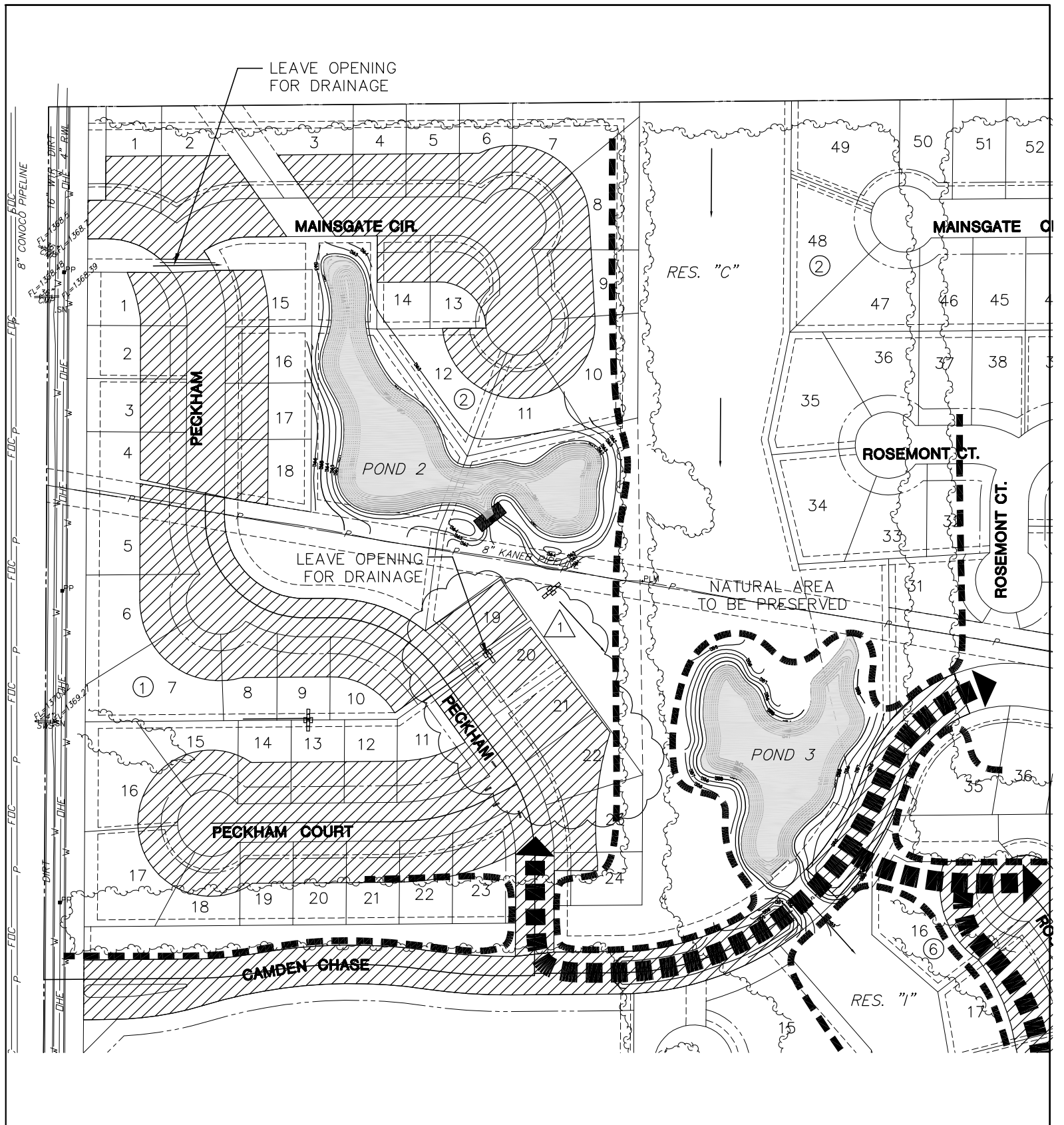


**DOWNSTREAM ELEV.**

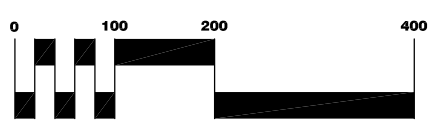
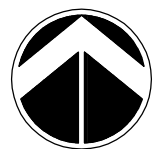
REVISION 02/17/03

**MKEC**  
ENGINEERING CONSULTANTS  
411 N. WEBB ROAD  
WICHITA, KS. 67206  
316 - 684 - 9600

<b>HAWTHORNE ADDITION</b>		
PROJECT NAME		
<b>PARTIAL (REVISION)</b>		
SHEET TITLE		
DRK	DMU	DRK
DESIGN BY:	DRAWN BY:	CHECKED BY:
JANUARY 2003	02167	11 / 46
DATE	JOB NO.	SHEET/OF



1 REVISION 02/17/03



SCALE: 1" = 100'

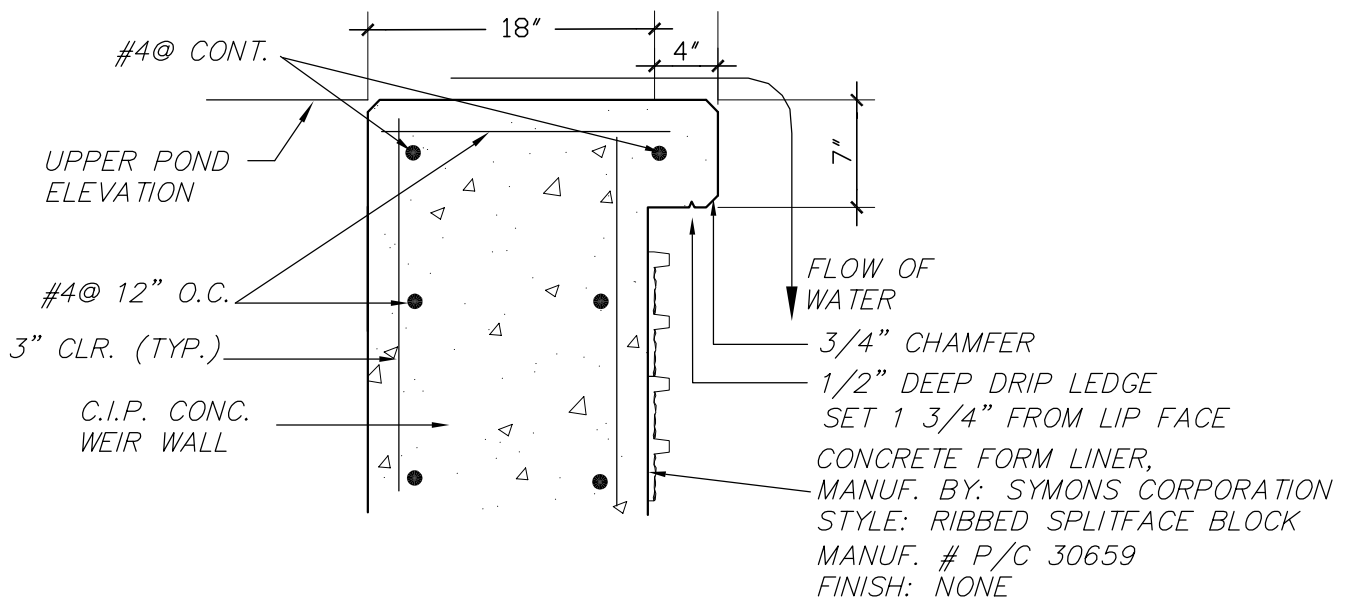
H:\CIVIL\02167\DWG\GRAD\PONDS 02167LGI

**MKEC**  
ENGINEERING CONSULTANTS  
411 N. WEBB ROAD  
WICHITA, KS. 67206  
316 - 684 - 9600

**HAWTHORNE ADDITION**  
PROJECT NAME

**PARTIAL (REVISION)**  
SHEET TITLE

DRK DESIGN BY:	DMU DRAWN BY:	DRK CHECKED BY:
JANUARY 2003 DATE	02167 JOB NO.	13 / 46 SHEET/OF



## **REVISED 2' SLOT WEIR LIP (WEIRS 4A & 5A)**

1"=1'-0"